

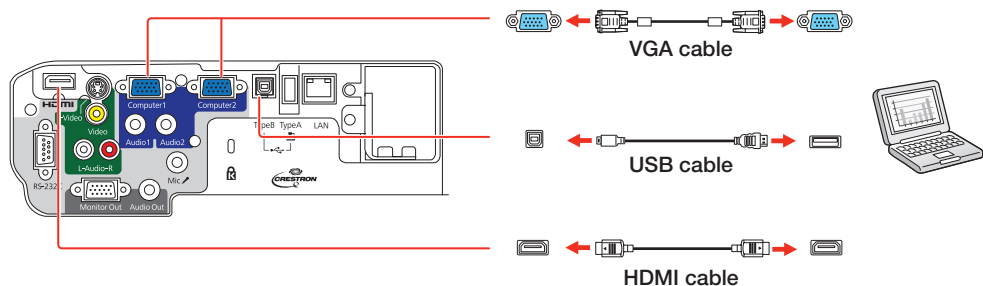
Quick Setup

Before using the projector, make sure you read the safety instructions in the online *User's Guide*.

Connect the projector

Choose from the following connections. See the sections below or the online *User's Guide* for details.

Computer



USB Port

Connect the square end of a USB cable to the projector's **USB TypeB** (square) port. Connect the flat end of the cable to any USB port on your computer.

Windows® 2000 SP4 or later: After turning on the projector, follow the on-screen instructions to install the Epson USB Display software (**EMP_UDSE.EXE**; only on first connection).

Note: If the software screen does not display automatically, open **My Computer** or **Computer**, then double-click **EPSON_PJ_UD**.

Mac OS® X 10.5.1 or higher: After turning on the projector, the setup folder for USB Display appears in the Finder. Double-click **USB Display Installer** and follow the on-screen instructions to install the Epson USB Display software (only on first connection).

Monitor Port

Connect one end of a VGA cable to the projector's **Computer1** or **Computer2** port, and the other end to your computer's monitor port. If you are using a laptop, switch it to external display (see "Troubleshooting"). You can also connect an audio cable.

HDMI Port

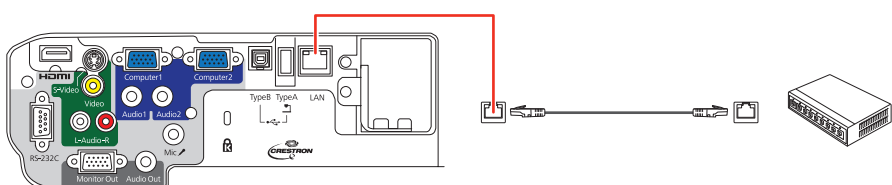
Connect one end of an HDMI cable to the projector's **HDMI** port and the other end to an HDMI port on your computer.

Wireless Network

You can connect the projector wirelessly over an 802.11b, 802.11g, or 802.11n wireless network. See "Project wirelessly" for instructions.

Wired Network

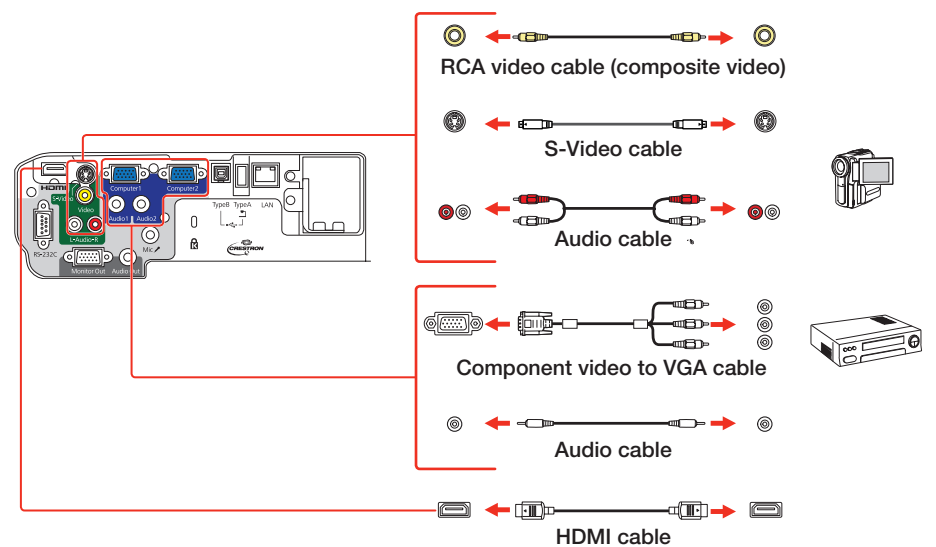
You can connect the projector to your network using an Ethernet® cable.



See "Project over a wired network" for instructions.

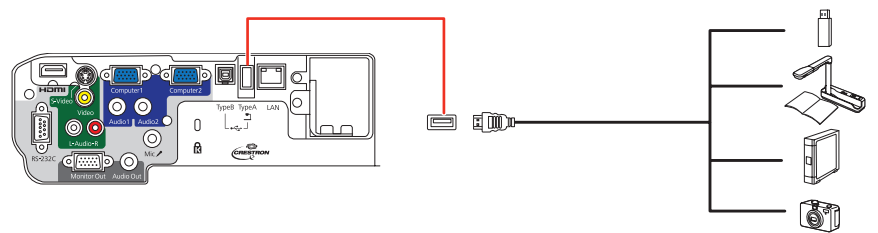
Video Device

Connect up to 5 video devices and use the **Source Search** button on the projector or remote control to switch between them.



Camera, USB Device, or Epson Document Camera DC-06

Connect a digital camera, USB flash drive, USB storage device, or Epson document camera DC-06 to the projector's **USB TypeA** (flat) port.



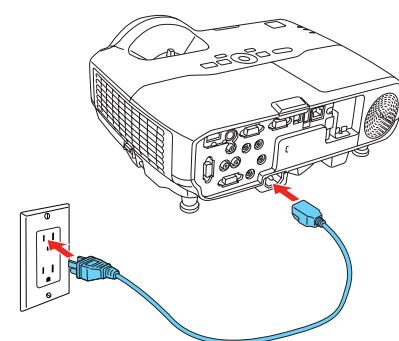
If you connect a digital camera, USB flash drive, or USB storage device, you can use the projector's Slideshow feature to project images. See the online *User's Guide* for details.

External Monitor, External Speakers, and Microphone

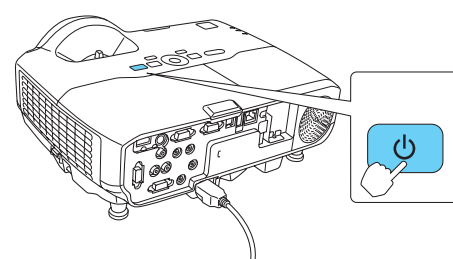
You can also connect an external monitor, external speakers, and a microphone to your projector to enhance your presentations. See the online *User's Guide* for details.

Turn on your projector

- 1 Turn on your computer or video source.
- 2 Plug in the projector. The power light on the projector turns orange.



- 3 Press the power button on the projector or remote control. The projector beeps, the power light flashes green, and then stays on.



Note: To shut down the projector, press the power button twice, then unplug it. You don't have to wait for the projector to cool down.



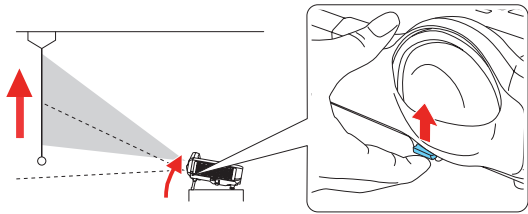
- 4 The default language of the menu system is **English**. To select another language, press the **Menu** button on the remote control. Select **Extended** and press \swarrow/\ominus . Select **Language** and press \swarrow/\ominus . Select your language and press \swarrow/\ominus . Press the **Menu** button to exit the menu system.

Adjust the image

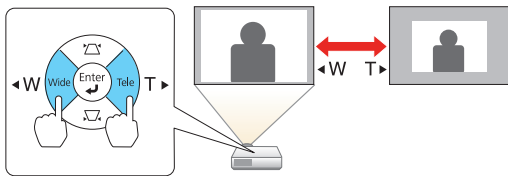
- 1 If you don't see an image, press the **Source Search** button on the projector or the remote control to select the image source.

Note: If you still see a blank screen or have other display problems, see the troubleshooting tips on the back of this sheet.

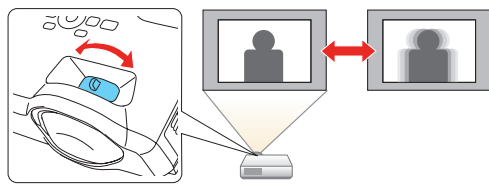
- 2 To raise the image, press the foot release button and lift the front of the projector. Release the button to lock the foot in position.

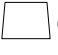
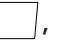



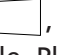
- 3 Press the **Wide** or **Tele** buttons on the projector to enlarge or reduce the image.

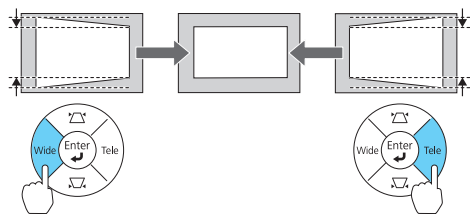


- 4 Turn the focus ring to sharpen the image.



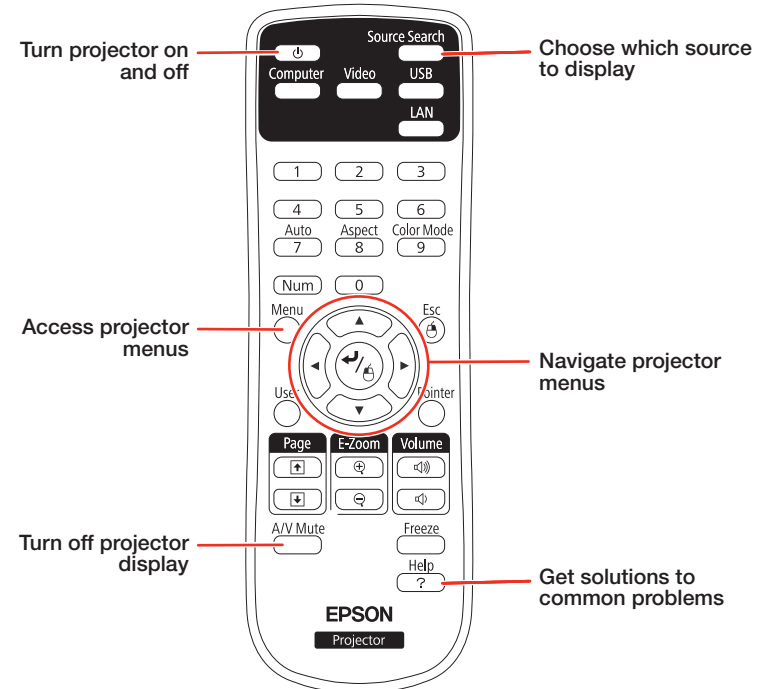
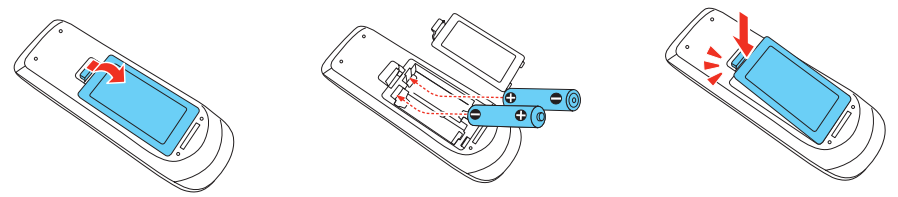
- 5 If your image looks like  or , press the \swarrow/\ominus or \searrow/\oplus buttons on the projector to correct it.

- 6 If your image looks like  or , you've placed the projector off to one side of the screen at an angle. Place it directly in front of the center of the screen, facing the screen squarely. Or press the \swarrow/\ominus or \searrow/\oplus buttons on the projector to open the Keystone menu, and then press the **Wide** or **Tele** buttons to correct the horizontal keystone.



Using the remote control

Make sure the batteries are installed as shown (two AA batteries).

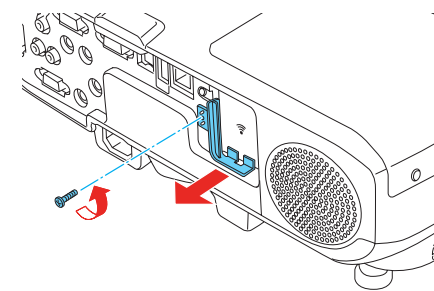


For more information on using the remote control, see the online *User's Guide*.

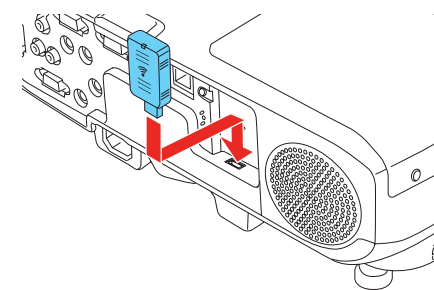
Project wirelessly

Follow the steps here to connect the projector wirelessly over an 802.11b, 802.11g, or 802.11n wireless network. You must install the optional Epson wireless LAN module (part number V12H418P12). Your computer must have a wireless card or built-in wireless interface, and be running Windows 7, Windows Vista®, Windows XP Professional x64, Windows XP, or Windows 2000, or Mac OS X 10.3 to 10.7.

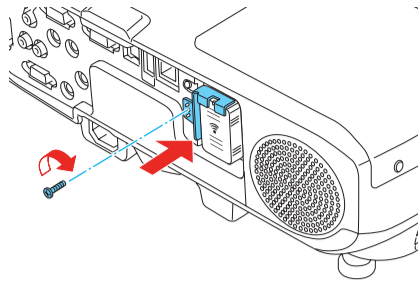
- 1 Turn off the projector and unplug the power cord.
- 2 Remove the screw securing the wireless LAN module stopper, then remove the stopper.



- 3 Insert the wireless LAN module into the port.



- 4 Replace the wireless LAN module stopper and secure it using the screw you removed.

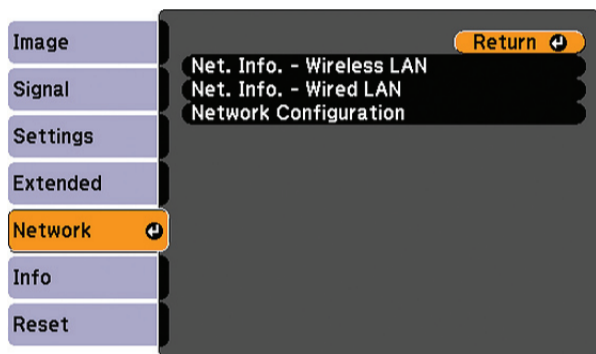


- 5 Plug in and turn on the projector.

- 6 To configure your projector for your wireless network, do one of the following:

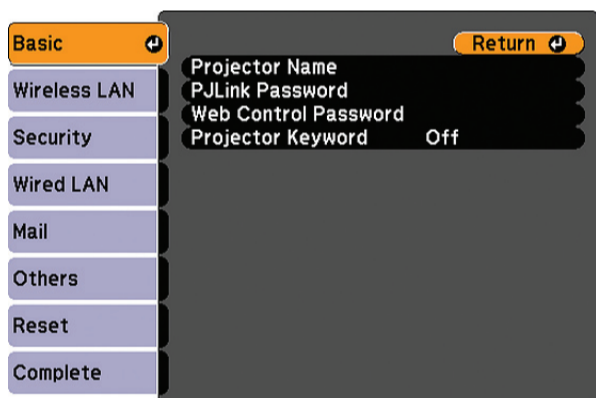
- If you're using the optional Quick Wireless Connection USB key (Windows only), insert it into the projector's USB **TypeA** port, wait for the displayed message, remove the key, and connect it to a USB port on your computer. Follow the on-screen instructions to install the driver, then run your presentation. For details, see the online *User's Guide*.
- If you're not using the key, continue with these steps.

- 7 Press the **Menu** button on the remote control, select the **Network** menu, and press \leftarrow/\rightarrow .



- 8 Choose **Network Configuration** and press \leftarrow/\rightarrow .

- 9 Select the **Basic** menu and press \leftarrow/\rightarrow .

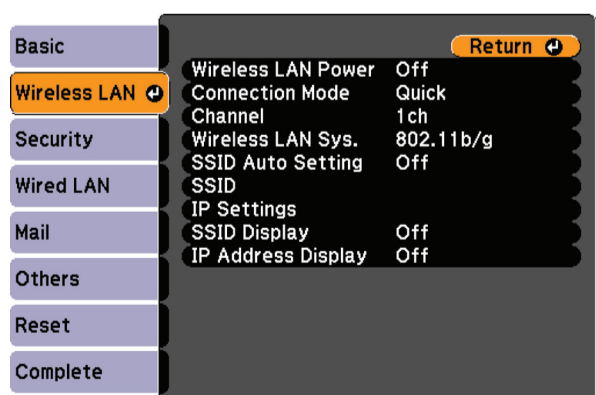


- 10 Select the **Projector Name** setting, press \leftarrow/\rightarrow , and enter a name (up to 16 characters long) to identify your projector over the network.

Use the displayed keyboard to enter characters. Press the arrow buttons on the remote control to highlight the characters and press \leftarrow/\rightarrow to select them.

Note: See the online *User's Guide* for information on adding passwords.

- 11 Select the **Wireless LAN** menu and press \leftarrow/\rightarrow .



- 12 Select the **Connection Mode** setting, press \leftarrow/\rightarrow , and choose one of these options:

- **Quick** to connect the projector to one computer on the network (Ad Hoc)
- **Advanced** to connect the projector to multiple computers on the network (infrastructure)

- 13 If you selected **Quick** connection mode, select the **Channel** setting for your wireless network and turn on the **SSID Auto Setting** setting.

- 14 Select the type of wireless network you are using as the **Wireless LAN Sys.** setting.

- 15 If you selected **Advanced** connection mode, enter your network SSID (up to 32 characters) as the **SSID** setting.

- 16 If your network assigns addresses automatically, select **IP Settings** and turn on the **DHCP** setting. If not, turn off the **DHCP** setting and enter the projector's **IP Address**, **Subnet Mask**, and **Gateway Address**, as needed.

- 17 To prevent the SSID and IP address from appearing on the network standby screen, set the **SSID Display** and/or **IP Address Display** settings to **Off**.

- 18 When you are finished, select **Complete** and press \leftarrow/\rightarrow , then press \leftarrow/\rightarrow again to save your settings.

- 19 Press the **Menu** button to exit the menu system.

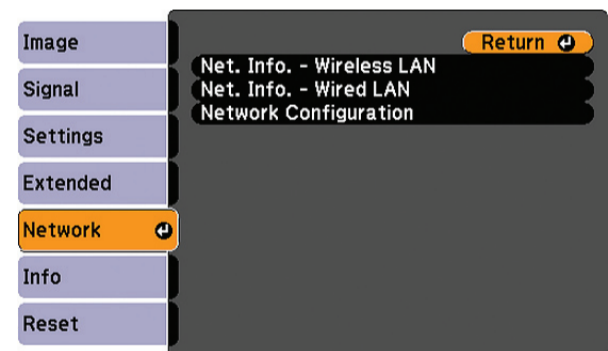
- 20 See "Install network software" for additional instructions.

Project over a wired network

Follow the steps here to configure your projector for your wired network using the projector's menu system.

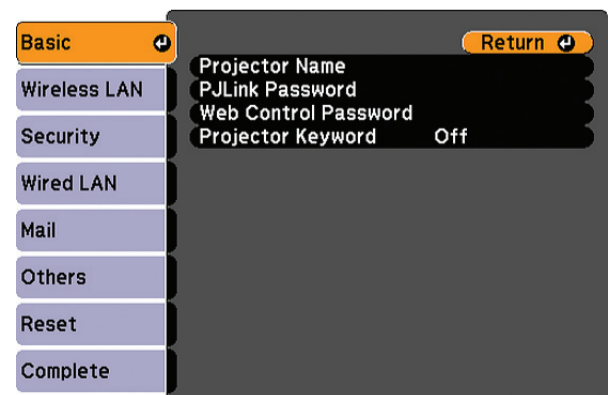
- 1 Plug in and turn on the projector.

- 2 Press the **Menu** button on the remote control, select the **Network** menu, and press \leftarrow/\rightarrow .



- 3 Select **Network Configuration** and press \leftarrow/\rightarrow .

- 4 Select the **Basic** menu and press \leftarrow/\rightarrow .

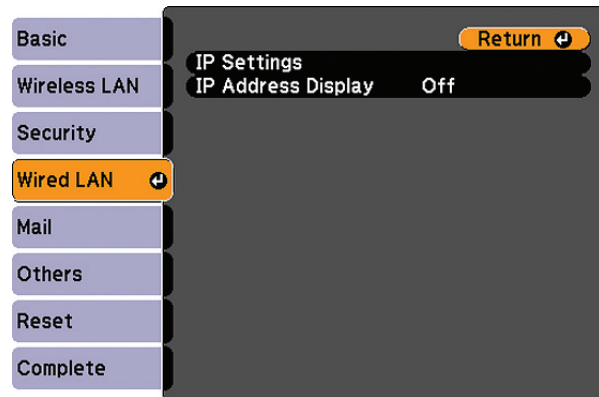


- 5 Select the **Projector Name** setting, press \leftarrow/\rightarrow , and enter a name (up to 16 characters long) to identify your projector over the network.

Use the displayed keyboard to enter characters. Press the arrow buttons on the remote control to highlight the characters and press \leftarrow/\rightarrow to select them.

Note: See *the online User's Guide for information on adding passwords.*

- 6 Select the **Wired LAN** menu and press \leftarrow/\rightarrow .



- 7 Choose **IP Settings** and press \leftarrow/\rightarrow .
- 8 If your network assigns addresses automatically, select **IP Settings** and turn on the **DHCP** setting. If not, turn off the **DHCP** setting and enter the projector's **IP Address**, **Subnet Mask**, and **Gateway Address**, as needed.
- 9 To prevent the IP address from appearing on the network standby screen, set the **IP Address Display** setting to **Off**.
- 10 When you are finished, select **Complete** and press \leftarrow/\rightarrow , then press \leftarrow/\rightarrow again to save your settings.
- 11 Press the **Menu** button to exit the menu system.
- 12 See "Install network software" for additional instructions.

Install network software


Install the EasyMP® Network Projection software on each computer that will project over the network. Use the CD labeled *Epson Projector Software* to install the program.

For instructions on installing and using your network software, click the icon on your desktop to access the on-screen *EasyMP Network Projection Operation Guide*. If you don't see the EasyMP Network Projection Guide icon, you can install it from the projector CD or go to the Epson website, as described on the right.

To monitor and control your projector over the network, download and install the EasyMP Monitor software and manual from the Epson support web site. You can install a link to the downloads page from the projector CD or go to the Epson website, as described on the right.

Troubleshooting

If you see a blank screen or the **No signal** message after turning on your computer or video device, check the following:

- Make sure the power light on the projector is green and not flashing, and the **A/V Mute** slide is open.
- Press the **Source Search** button on the projector or the remote control to select the computer as the image source.
- If you're using a Windows notebook, press the function key on your keyboard that lets you display on an external monitor. It may be labeled **CRT/LCD** or have an icon such as . You may have to hold down the **Fn** key while pressing it (such as **Fn + F7**). Wait a moment for the display to appear.
- If you're using a Mac® laptop, open **System Preferences** and select **Displays**. Select the **VGA Display** or **Color LCD** option if necessary, then click the **Arrange** or **Arrangement** tab, and select the **Mirror Displays** check box.

Where to get help

Manuals

For more information about using the projector, click the icons on your desktop to access the online manuals (may require an Internet connection). If you don't have icons to the manuals, you can install them from the projector CD or go to the Epson website, as described below.

Telephone Support Services

To use the Epson PrivateLine® Support service, call (800) 637-7661 and enter the PIN on the Epson PrivateLine Support card included with your projector. This service is available 6 AM to 6 PM, Pacific Time, Monday through Friday, for the duration of your warranty period. You may also speak with a projector support specialist by dialing:

US: (562) 276-4394, 6 AM to 8 PM, Pacific Time, Monday through Friday, and 7 AM to 4 PM, Pacific Time, Saturday

Canada: (905) 709-3839, 6 AM to 8 PM, Pacific Time, Monday through Friday

Days and hours of support are subject to change without notice. Toll or long distance charges may apply.

Internet Support

Visit www.epson.com/support (U.S.) or www.epson.ca/support (Canada) for solutions to common problems. You can download utilities and documentation, get FAQs and troubleshooting advice, or e-mail Epson.

Registration

Register today to get product updates, special promotions, and customer-only offers. You can use the CD included with your projector or register online at www.epson.com/webreg.

Optional accessories

For a list of optional accessories, see the online *User's Guide*.

You can purchase screens or other accessories from an Epson authorized reseller. To find the nearest reseller, call 800-GO-EPSON (800-463-7766). Or you can purchase online at www.epsonstore.com (U.S. sales) or www.epson.ca (Canadian sales).

EPSON
EXCEED YOUR VISION



Epson, EasyMP, and PowerLite are registered trademarks, and Epson Exceed Your Vision is a registered logomark of Seiko Epson Corporation. PrivateLine is a registered trademark of Epson America, Inc.

General Notice: Other product names used herein are for identification purposes only and may be trademarks of their respective owners. Epson disclaims any and all rights in those marks.

This information is subject to change without notice.

© 2011 Epson America, Inc. 8/11
Printed in XXXXXX

CPD-35017