

**Obsolete &
Classic Auto Parts, Inc.**

PARTS FOR FORD® CARS & TRUCKS
Oklahoma City, OK 1-800-654-3247

HOLIDAY SALE

1949-72 Fullsize • Expires January 31, 2020



Printed Shop Manuals

Detailed books on specs, instructions, basically every working aspect of your car.

- 1949-51 Ford **BK-528 \$24.00**
- 1952-54 Ford **BK-530 \$25.00**
- 1952 Mercury **BK-823 \$27.00**
- 1954 Mercury **BK-825 \$39.00**
- 1955 Ford **BK-532 \$19.00**
- 1956 Ford **BK-534 \$25.00**
- 1956 Mercury **BK-827 \$39.00**
- 1957 Mercury **BK-828 \$59.00**
- 1957 Ford **BK-536 \$27.00**
- 1958 Ford **BK-538-S \$29.00**



Outside Rearview Mirror

Chrome plated with stainless head.
1952-55 (1 hole mount) **P17-26840**
1955-65 All (2 hole) **P17-26840-010**
Your choice - 25.00



1964 Ford Rear Quarter Panel Emblem Inserts

Gold center with multi colored exterior as original. Sold in pairs.
1964 Galaxie **P25-45030-100 \$30.00**



Standard Outside Rearview Mirror Non remote style - chrome plated - fits either side.
1960-64 All
P17-26840-060 \$19.00 each

Original California Car Duster

Fine cotton strands that have been treated with a paraffin wax baked into the strands for optimum effectiveness. **M-96-MD \$22.00**



Fuzzy Dice

4" Diameter. Specify color
Red V17-27225-085
Black V17-27225-070
White V17-27225-090
Your Choice \$5.00 pair



Front Fender Trim Plates
Stainless steel 1949-51 Ford
P18-28250 - \$99.00



1960 Ford Door Sill Scuff Plates fits all 2-door body styles **PB9-39045-250 \$99.00 pair**



Engine Compartment Lamp Kit 1956-70
P15-23350 \$15.00

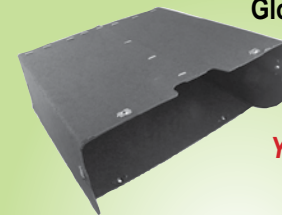


Foil Bubble Insulation

Reflective foil insulation consists of 2 layers of polyethylene bubble film between 2 layers of pure aluminum. 5/16" thick (48" x 72") Temp range of -60F to 180F. Cut and form into needed shapes. Great for under floor pans, fire walls, interior panels etc. Adhesive required.
R05-7040-015 - \$20.00



Ignition & Door Lock Cylinder and Key Set
1952-58 Ford (exc 57 Retractable & Wagon) **P22-42070 \$55.00 set**



Gloveboxes - USA Made

YOUR CHOICE \$15.00 ea

- 1949-50 Ford **PB5-35005-020**
- 1951 St Wagon **PB5-35005-020**
- 1951 Ford **PB5-35005-005**
- 1952-53 Ford **PB5-35005-085**
- 1955 Ford (w/o air) **PB5-35005-030**
- 1956 Ford (w/o air) **PB5-35005-045**
- 1957-58 Ford (w/o air) **PB5-35005-060**
- 1959 Ford **PB5-35005-080**
- 1960-62 Ford **PB5-35005-110**
- 1963 Ford **PB5-35005-140**

8701 South I-35
Oklahoma City, OK 73149
PH: 405-631-3933 Fax: 405-634-6815
Toll Free: 1-800-654-3247



Nylon Axle Straps and Poly Ratchet Tie Downs

Straps - **M-96-NAS \$9.00**
Tie Downs - **M-96-NRTD \$29.00**



HIRSCH Brush on Engine Enamel This is some of the highest quality engine enamel on the market today. Extremely high solid content, heat resistant to 700

degree F. Most of your show winning cars today use Hirsch Engine Enamel. It is high gloss, easy to use. It can be brushed or sprayed. Nothing else compares! Quart size cans.

BLACK.....PT-95-QBL FORD MED BLUE.....PT-95-QMB
BRONZE.....PT-95-QBR FORD MED GREEN..PT-95-QMG
ORANGE.....PT-95-QFO
FORD BLUE.....PT-95-QFB **YOUR CHOICE \$32.50 each**

Black Foil Insulation Set

Self Adhesive, butyl rubber sound deadner - 9 sheets of 20" x 29" 80 mil thickness - temp range of -49 to 212F. 36 sq Ft Total.
V05-7040-010 \$79.00



Felt/Foil Insulation

4 Ft x 5 Ft Roll - Superior product that can install anywhere. Under door panels, carpet, firewall etc. Spray adhesive is what we recommend for installation. Demanded by our local customers.
V05-7040-003 \$39.00



Script Tire Valve Stem Covers

Precision machined with script encased on the top of each one. Complete with O-Rings.

V01-760-045 \$8.00



Stainless Steel Hubcap
1949-50 Ford (10 1/4")
P01-315-140
\$25.00 each



Power Booster Conversion Kit: Converting from Manual Brakes to Power Brakes does not have to be complicated. Our conversion kit includes all of the necessary components to make the changeover in a simple bolt-in package. We have taken all of the guesswork out of the equation making this a great weekend project and upgrade. Combine this with disc brakes or leave the car drum brakes to provide a nice easy pedal feel that will make driving that much more enjoyable
Includes:

- 7" Dual Diaphragm Brake Booster
- 1" Bore Master Cylinder
- Firewall Mounting Brackets and Hardware
- Push rod with Pedal Attachment
- 3 feet of 11/32 inch Vacuum Hose
- Intake Manifold Fitting

1955-72 Ford (292 312 352) Will not work on factory power brake equipped vehicles.
BM15102-1\$340.00



Clutch / Brake Pedal Pad
1952-64 Ford (man trans)
1964 Mercury
P02-1730-020 \$4.00



Stainless Steel Hubcap
1951 Pass
P01-315-060 - \$29.00



Chrome Wheel Spinner
with blue plastic center emblem. 1965-67 Ford with wire wheel caps.
P01-315-244
\$17.00 each



Chrome Hubcap
with the original crest emblem in the center. 1955-56 Ford & 1962 Ford (with 15" wheels)
P01-315-200
\$120.00 each



Front Brake Hoses
1949-53 Ford & '52-53 Mercury **P02-1225-005**
1954-56 Ford - 1959-66 Ford **P02-1220-030**
1957 Ford **P02-1220-040**
Your Choice \$10.00 each



Chrome Piston Key Chain
(Blue Oval) **K-99-FO**
(Busted Knuckle) **K-99-BKG1**
(Hot Rod) **K-99-BKG2**
Your Choice \$8.00 each

Lady Luck Key Chain Chrome Plated with the Classic Lady Luck Logo
K-99-LL \$7.00



Brake Shoe Hold Down Kits
1955-60 Ford (rear)
P02-1175-035 \$14.50
1961-64 Ford (front or rear)
P02-1175-045 \$10.00

1-800-654-3247



Must use 15" or larger wheels with these kits



MP Brakes Front Disc Brake Conversion Kits

Legend Series: Our most cost effective option. - The Master Power Brakes Legend Series is a complete brake system to upgrade your drum brakes to the reliability and performance of disc brakes. These kits consist of OEM style cast-iron calipers and vented rotors. The Legend Series is our most cost effective kit and a great upgrade to your classic vehicle.

Includes the following:

Single Piston D52 OE Calipers - Silver zinc finish w/stainless steel pistons • Semi-Metallic Brake Pads • 11 inch Vented Rotors • Laser Cut and Zinc Plated Caliper Mounting Bracket • Wheel Bearings and Grease Seals • Grade 8 Hardware • Spindle Nuts & Washers • Dust Caps • Rubber Brake Hoses (NOTE: 54-56 has been redesigned to fit original spindles)

All with 5 x 4 1/2" bolt patterns.


1949-53 Custom & Deluxe	DB1504B	\$ 659.00	\$625.00
1954-56 Ford (with front manual brakes)	DB1511M	\$1099.00	\$1050.00
1954-56 Ford (with front power brakes)	DB1511P	\$1099.00	\$1050.00
1957-69 Ford (with front manual brakes)	DB1512M	\$1339.00	\$1299.00
1957-69 Ford (with front power brakes)	DB1512P8	\$1339.00	\$1299.00
1970-72 Ford (with front manual brakes)	DB1513M	\$1399.00	\$1350.00
1970-72 Ford (with front power brakes)	DB1513P8	\$1339.00	\$1299.00



Borgeson 800115 Power Steering Conversion Box #800115 \$548.10

1952-56 Crestline, Customline, Mainline
1957-60 Custom 1957-62 Fairlane
1958-64 Galaxie

Borgeson Ford car power steering conversion boxes for your midsize or full size car. They are remanufactured modern integral power steering gearboxes. The Borgeson integral gearboxes provide true modern power steering feel, feedback, and a sporty 16:1 ratio. These boxes bolt directly to the factory mounting location and fit the stock steering linkage without any interference or modification of the shock tower. Eliminate your leaky control valve and feel the road with a new integral power steering conversion from Borgeson. Factory columns will need shortened for clearance. Cars with factory power steering will require either a drag link adapter or a manual steering center link.



Rear Brake Hoses
1952-53 Mercury St Wagon - '52-56 Ford Wagon -
1955 Ford Convertible - 1955-56 Mercury -
1957 Mercury Wagon - 1958 Mercury (all)
P02-1635-005 **\$10.00 each**




Swiftsure Brake Pedal Pad
Used on Fordomatic transmissions. Includes stainless steel swiftsure cover. 1952-59 Ford
P02-1715-045 **\$47.00**



Ball Stud Repair Kit
1962-72 Ford & Mercury P03-4750-025
\$37.00 per kit




Rear Brake Hose
1957-58 Skyliner - 1959-64 Ford
P02-1220-040 **\$10.00 each**



Lower Ball Joint
1957-64 Ford & Mercury
1958-60 Edsel
P03-3205-020 **\$55.00**



Power Steering Clinder Super Seal Kit 1961-66 Ford
P03-5105-010 **\$25.00**



Chrome Outer Tie Rod End
(with nut) 1949-59 Ford & Mercury
RH V03-3715-009
LH V03-3720-066
\$20.00 ea

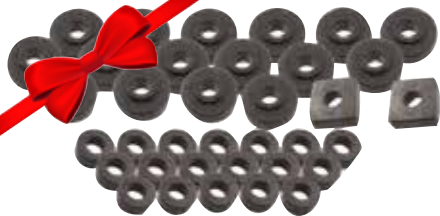


Upper Ball Joint
1957-64 Ford
P03-3200-020 **\$20.00**



Body to Frame Webbing
Adhesive backed - 20 ft roll.
1.5" wide - V05-7000-025
2" wide - V05-7000-030
Your Choice \$20.00 roll





Body to Frame Pads 1963-64 Ford (exc
Convertible & St Wagon)
P05-7005-110 **\$45.00**



Body to Frame Pad Kit
1957-58 Ford (exc Retractable, Convertible,
Ranchero & St Wagon)
P05-7005-080 **\$200.00 kit**



Body to Frame Pad Kit
Complete with bushings, washers, nuts etc
to mount the body to the frame.
1957 Ford Retractable & Convertible
P05-7005-090 **\$179.00**



Battery Hold Down Frame
1949-53 Ford® or Mercury®
V05-7445 - **\$9.00**



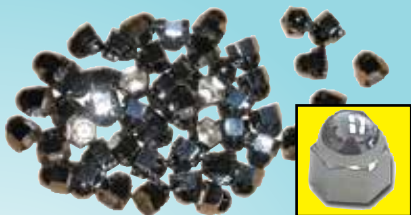
Rear Spring Shackle Kit
1951-59 Ford -
1957-59 Ranchero &
1952-56 Mercury
P05-7895-080
\$15.00 each



Front Motor Mount
1949-53 Ford 215, 226, 239
P06-10110-375
\$15.00 each



Front Motor Mount
1965-74 Ford 289, 302,
351C, 351M
P06-10110-200
\$15.00 each



**Chrome Plated Cylinder Head Nut
Covers** These are metal covers that snap
over your cylinder head nuts. Dresses up
your engine. Set of 50 pieces 1949-53 - 239
V06-10155 - **\$25.00**



Chrome Plated Valve Cover
1965-72 (240, 300) P06-10905-065 - **\$64.00**

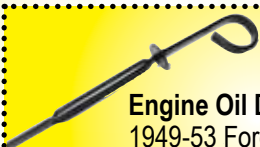


Chrome Valve Covers
POWERED by Ford - 1967-70 390, 428
B06-10905-200 **\$269.00 pair**



Oil Filter Element
Cartridge Type
1949-53 Ford 226, 239
1949-53 Mercury - V8
P06-11180-005 **\$12.00**

Oil Pump Assy
Short body - 80lb
1949-53 239
1949-51 Mercury 239
1952-53 Mercury 255
V06-10965-025
\$150.00



Engine Oil Dipstick
1949-53 Ford Fullsize V8
Painted P06-11200-010 **\$15.00**
Chrome P06-11200-015 **\$20.00**



Gear Shift Boot
1962-64 all 4-speed with
console
P07-12710-010 - **\$19.00**



Gear Shift Boot
1962-63 Ford (4 spd
without console)
P07-12710-005
\$19.00



**Oil Filter Conversion
Kit** Converts from
original filter cartridge to
the modern spin off filter.
1952-59 6 cyl OHV
1954-58 8 cyl OHV
P06-11270 **\$20.00**



**Shifting Linkage Repair
Kit** For column shift.
Requires 2 kits
1949-67 Fullsize Ford
V07-12850 - **\$10.00 kit**



Clutch Disc 9 1/2"
1949-57 Ford - V8
P07-13120-010
\$45.00





New



COLD CASE Aluminum Radiators

These COLD-CASE radiators are Tig welded 100% aluminum and absolutely beautiful. Don't buy a 3 or 4 row aluminum radiator! It doesn't cool as good as these oversize 2 row models. Original fan shroud will mount with original mounting brackets. These radiators are original appearing and have the correct stamping. Once painted, you'd be hard pressed to find a difference over an original versus a COLD-CASE.

- 100% TIG welded
- All Aluminum
- Polished OE style tanks
- 16 fins per inch
- Corrugated fins that give more surface area and more thermal transfer
- Pressure tested

- 1960-63 Galaxie w/side tank Manual Trans - **FOG580**
- 1960-63 Galaxie w/side tank - Auto Trans - **FOG560A**
- 1964 Galaxie w/side tanks - Manual Trans - **FOG581**
- 1964 Galaxie w/side tanks - Auto Trans - **FOG581A**
- Any Above Aluminum Radiator \$325.00**



New

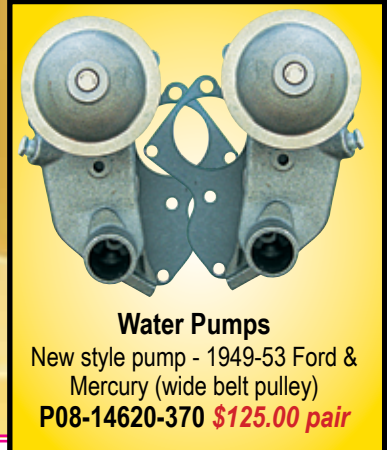
New 1956 Ford Grill

Chrome Plated Steel - 3 Piece kit - Beautiful Reproduction - Replace that pitted Original with (1) Right Grille Side (1) Left Grille Side (1) Center Grille Joint Cover (1) Hardware & Instructions **P08-14230-265 \$949.95**



Radiator Hose Kit

Show quality kit 1949-53 8 cyl
V08-14452-015 \$69.00



Water Pumps

New style pump - 1949-53 Ford & Mercury (wide belt pulley)
P08-14620-370 \$125.00 pair



New Water Pump

1955-57 - 272 292 312
1958-59 Ford - 292
1955-57 Mercury - all
1969-72 - 292 312
P08-14620-095 \$70.00



Thermostat Housing

1949-53 - V8
P08-14785 \$20.00



Locking Gas Cap

Chrome plated with 2 keys & neoprene gasket
1949-59 Ford
P18-28415-015 \$13.50



ALL NEW CORRECT 20 Gallon Tanks from ACP

These are year specific and come complete with the locking ring and gasket. Gas tank necks are different for each individual year.



New

- 1962 P09-15010-191
- 1963 P09-15010-192
- 1964 P09-15010-193
- Your Choice \$325.00**



Fuel Logs

- 1961-66 (3 x 2bbl) **P09-15390-140**
- 1963-67 406, 427 (2 x 4bbl) **P09-15390-145**
- 1963-72 260, 289, 302 (3 x 2bbl) **P09-15390-150**
- 1963-72 260, 289, 302 (2 x 4bbl) **P09-15390-155**
- Your Choice \$39.00**



Gas Tank Sending Unit

1960-64 (exc St Wagon)
1961-64 Mercury (exc Wagon)
P09-15370-060 \$45.00



Gas Tank Sending Unit

1957-59 Ford (exc Retractable & St Wagon)
P09-15370-030 \$45.00





Carburetor Linkage Rod Kit

Includes bellcrank, bellcrank to carb rod, front throttle rod & rear throttle rod.

1961-66 390, 406, 427 - 3 x 2 bbl

P09-16295-165

1963-67 406, 427 - 2 x 4 bbl low riser engine

P09-16295-195

1963-72 260, 289, 302 - 3 x 2 bbl

P09-16295-210

1965-68 427 2 X 4 bbl - medium riser, high riser, tunnel port and cammer engines

P09-16295-205

Your Choice \$49.00 set



Hot Rod Style Air Cleaners

Fits 2 5/8" carbs - included filter. Clamps on carb with stainless steel clamp (included).

Smooth V09-16135-020 \$10.00

Louvered V09-16135-025 \$10.00



Starter Solenoid 12V

1956-72 Ford & Mercury

P11-18235-065

\$8.00 each

1-800-654-3247



289 Hi Po Air Cleaner

High polished chrome top, correct gold bottom, wing nut, decal & filter are all included.

1964-65 289 Hi-Po

P09-16135-140 \$37.50

Carburetor Throttle Lever Trunion

1963-67 406 427

(with 2 x 4 bbl)

P09-16470-010 \$7.00



Battery Hold Down Clamp

1965-69 All

P10-17425-035 \$6.00



Gas Pedal

1957-64 Ford & Merc

X09-16410-070

\$10.00 each



Air Cleaner Element

These filters feature the correct color of filter paper and orange molded face. In addition, they have the correct "round hole" design on the outer shell. Fits 289, 302, 351, 390, 427, 428 and 429 engines originally equipped with the chrome high performance air filter assemblies.

1964-73 All

S09-16140-025

\$10.00

Expires 1-31-20



Ignition Switch Lock Cylinder & Keys

1960-64 All

P11-18330-015 \$6.00



Ignition Switch Lock Cylinder & Keys

1965-69 All

P11-18330-025 \$6.00



Ignition Switch Lock Cylinder & Keys

1970-72 All

P11-18330-030 \$9.00



Spark Plug Wire Bracket & Grommet Set

1954-57 Ford (8 cylinder)

P12-19100-055 \$29.99



Stock Style Distributor

1962-66 Galaxie (352) single vacuum

1962-69 Galaxie (390) single vacuum

1963 Galaxie (406) single vacuum

1963-68 Galaxie (427) exc 500

1966-70 Galaxie (428) single vacuum

P12-19130-100 \$259.95

1963-64 (260) single vacuum

1963-67 (289) single vacuum

1968-69 (302) single vacuum

H12-19130-100 \$189.95

1969 (351) single vacuum

H12-19130-110 \$179.95

1969-73 (429) single vacuum

H12-19130-115 \$174.95



Steel Battery Tray EDP Coated

1961-64 Ford

\$10-17465-010 \$20.00 each



Steel Battery Tray

EDP Coated 1966-72 Ford

P10-17465-015 \$20.00 each



Battery Hold Down Bolts

1957-58 **P10-17455-025**

1965-69 **P10-17455-050**

YOUR Choice \$4.00



Distributor Tune Up Kit

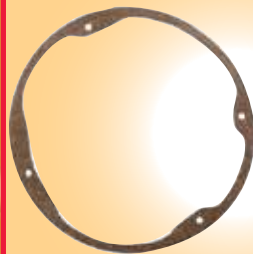
1957-59 8 cyl

F12-19000-045 \$10.00





Headlamp Inner Ring - holds headlamp bulb to bucket (Stainless Steel) 1949-56 Ford
V13-20060-010 \$10.00



Headlamp to Fender Gasket (CORK)
 1949-56 All
V13-20145-005 \$2.50 each

Parking Light Assembly

Complete assembly with mounting grommet
 1951 Ford
P13-20340-010 - \$21.50



Parking Light Lens
 1956 Ford **P13-20370-100 \$8.00 each**

Glass Blue Dot Chrome Plated Rim installs in any lens
V13-20745-145 \$3.00



Turn Signal Switch Assy
 Heavy duty style with emergency flasher button, old time accessory, clamps on to the steering column.
A13-20535 \$25.00



Parking Light Lens
 1957 Ford
P13-20370-110 \$8.00 each



Complete Tail Light Assy
 Ready to install - fits either side 1949-50 Ford (exc Wagon)
P13-20620-320 \$52.00



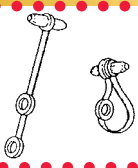
Tail Lamp Lens
 1953 Ford Car
P13-20745-675 \$9.00



Polished Aluminum Tail Lamp Bezel - Perfect Fit
 1963 Galaxie
P13-20850-025 \$25.00 each



Complete Tail Light Assy
 Ready to install - 1951 Ford except St Wagon
RH P13-20620-300 LH P13-20625-011 Your Choice \$99.00



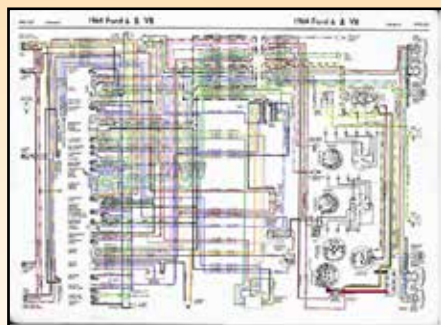
Wiring Harness Retainer Straps - 25 pcs
 1962-73 All **PC3-76540-015 SALE \$10.00 per set**



Tail Lamp Lens
 FoMoCo Script - fits the 1964 Galaxie 500 or 500XL
P13-20745-441 \$89.00

Colored Laminated Wiring Diagrams

11" x 17"
 Ideal for any restoration or garage project. Each diagram is specific for the application. Very detailed and color coordinated.



- 1949-50 Ford **P14-23205-100**
- 1951 Ford **P14-23205-105**
- 1952-53 Ford **P14-23205-110**
- 1954 Ford Car **P14-23205-115**
- 1955 Ford Car **P14-23205-120**
- 1956 Ford Car **P14-23205-125**
- 1957 Ford Car **P14-23205-130**
- 1958 Ford Car **P14-23205-135**
- 1959 Ford Car **P14-23205-140**
- 1960 Ford Car **P14-23205-145**
- 1961 Ford Car **P14-23205-150**
- 1962 Galaxie **P14-23205-155**
- 1963 Galaxie **P14-23205-160**

- 1964 Galaxie **P14-23205-165**
- 1965 Galaxie **P14-23205-170**
- 1966 Galaxie **P14-23205-175**
- 1967 Galaxie **P14-23205-180**
- 1968 Galaxie **P14-23205-185**
- 1969 Galaxie **P14-23205-190**
- 1970 Galaxie & LTD **P14-23205-195**

Your Choice \$17.95 each

New Dash to Engine Wiring Harnesses

These are the main engine wiring harness that goes thru the dash and out to your engine components. This does not include lighting or body wiring.



- 1962 Ford Galaxie 500XL, Hardtop, Fastback & Convertible **P14-22305-503 \$595.00**
- 1963 Galaxie 500XL Hardtop & Convertible (Auto Trans) **P14-22305-505 \$595.00**
- 1963 Mercury S55 Hardtop & Convertible **P14-22305-535 \$649.95**
- 1963 Mercury (except S55) **P14-22305-536 \$679.95**
- 1964 Galaxie (427) Trans Ignition & Auto Trans **P14-22305-532 \$695.00**
- 1965 Galaxie (without A/C) **P14-22305-650 \$695.00**

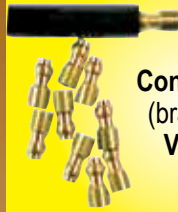
www.ClassicAutoParts.com

1-800-654-3247





Woven Wire Loom
Fabric Type Loom
5/16" ID - 30 ft Roll
A14-22325-005
\$10.00 roll



Male Wire Connectors - set 10
(brass bullet ends)
V14-22500-020
\$3.00

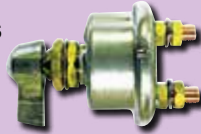
Female Wire Connectors
(set 10)
V14-22505-010
\$3.00 set



Wiring Loom to Frame Clips (set 10)
V14-22680-010 **\$3.00**



Battery Disconnect Switch With instructions for installation
A14-22140-030
\$25.00



Single Power Window Switch
Chrome Plated - 1969-70 Ford
P14-22595-047 **\$49.00 each**
(for rear door & 1/4 window)
P14-22595-048 **\$49.00 each**



Crestliner

Crestliner Front Fender Emblem Gold tone finish with clips.
1950-51 Ford
P16-24230 **\$59.00 each**

Customline

Customline Front Fender Emblem Chrome with clips.
1955 Ford
P16-24260 **\$33.00 each**



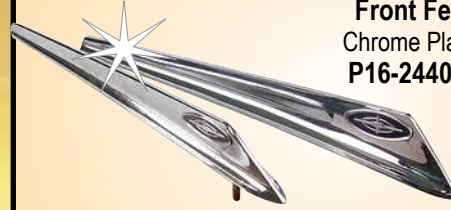
Power Window Switch
(Single switch)
1971-72 Ford & Mercury
P14-22595-085 **\$20.00**

Victoria

Victoria Front Fender Emblem
Chrome with clips.
1955-56 Ford
P16-24260-005 **\$31.00 each**

Swirliner

Front Fender Emblem Chrome with clips. 1955-56 Ford
P16-24260-010 **\$42.00 each**



Front Fender Ornaments
Chrome Plated - 1963 Galaxie
P16-24405-011 **\$125.00 pr**

Fairlane

Fairlane Front Fender Emblems
Chrome Plated - 1957-58 Fairlane
P16-24260-015 **\$119.00 pair**



Flying Thunderbird Emblems Chrome plated - fits on front fenders.
1956 Ford
P16-24450-230 **\$47.00**



Roof Side Emblem
Multicolored plastic insert - goes into a chrome bezel. 1963-64 (exc Conv & F/B)
B51-62230 **\$25.00 each**



Front Fender Emblems 352
Die cast chrome plated metal emblems with studs on the back side for installation.
1966 Ford® - P16-24450-255 **\$59.00 pair**



Front Fender Emblems 427
Die cast chrome plated metal emblems with studs on the back side for installation.
1966 All - P16-24450-250 **\$59.00 pair**



Hood Hinge Bolt
with special shoulder
1949-54 All
P16-24740 **\$3.25 each**



Front Fender Emblems 390
Die cast chrome plated metal emblems with studs on the back side for installation.
1966 Ford® - P16-24450-245 **\$59.00 pair**



Front Fender Emblems 428
Die cast chrome plated metal emblems with studs on the back side for installation.
1966 All - P16-24450-250 **\$59.00 pair**



Front Hood Emblem
(Crest Emblem)
1950-51 Ford
P16-24795 **\$29.00**



Front Hood Emblem
(crest emblem)
1952-56 Ford (exc Fairlane)
P16-24795-015
\$53.00 each

Happy Holidays

Die Cut Hood Insulation Kits

- 1961 Monterey - P16-24910-022 - **\$37.00**
- 1962-64 Mercury® - P16-24910-030 - **\$29.00**
- 1963-64 Ford® - P16-24910-030 - **\$29.00**
- 1965 Mercury® - P16-24910-042 - **\$27.00**
- 1969-70 Ford® - P16-24910-060 - **\$25.00**
- 1971-72 Ford® - P16-24910-065 - **\$25.00**



Rubber Hood to Cowl Lacing Kit

- 1949-51 Ford P16-24920-035 **\$6.00**
- 1955-56 Ford P16-24920-060 **\$6.00**
- 1957-58 Ford P16-24920-070 **\$6.00**
- 1969-70 Ford P16-24920-195 **\$8.00**



Hood Hinge Spring
1952-54 Ford
P16-25035
\$12.00 each



Windshield Wiper Blade - 12"
1955-60 Ford & 1955-58 Mercury
F17-26515-055 **\$14.00 each**



Windshield Wiper Blade - 11"
1949-54 Ford & 1949-51 Mercury
P17-26515 **\$19.00 each**



Windshield Washer Reservoir Bag
(See Clear)
1957-59 Ford
M17-26720-020
\$27.50



Windshield Washer Reservoir Bag
1959-65 Ford
1960-63 Mercury
P17-26720-050
\$43.00



Outside Rearview Mirror

Includes round head, crest emblem on the back side, arm, pad & screws. 1961-64 Ford
P17-26840-031
\$117.00 each



Windshield Washer Reservoir Bag
1960-64 Ford
P17-26720-055
\$13.00



Windshield Washer Reservoir Bag
1961-66 Ford (bef 10/16/65) & 1961-64 Mercury
P17-26720-027 **\$17.00**



Outside Rearview Mirror - LH Remote
1967 Ford
P17-26815-127 **\$59.00**



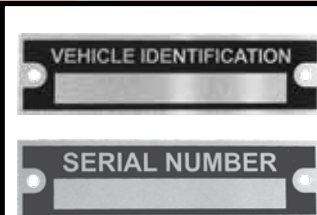
Standard Outside Rearview Mirror Non remote style standard mirror with the long mounting base. 1967-73 Ford
P17-26840-130 **\$31.00**



Inside Rearview Mirror Arm - Chrome Plated
1963-66 Ford
1963-69 Mercury
S17-26835-095
\$8.00 each



Stainless Clad Bumper Bolt Kit
1959 Ford P17-26975-060 **\$20.00**



Blank Vehicle ID & Serial Numer Plates

Ready to stamp with your OEM numbers - 3 1/4" X 7/8"
ID - Z18-28815-005
SN - Z18-28815-010
Your Choice \$9.00 each



1951 Ford Front Chrome Bumper
Triple chrome plated - exact reproduction
P17-26970-007 **\$375.00**



1951 Ford Rear Chrome Bumper Triple chrome plated - exact reproduction
P17-27230-002 **\$375.00**

Accessory Rear Deck Radio Antenna Chrome base with red plastic insert - complete with lead & instructions. For the LH side. 1952-56 Ford
P18-28950-135
SALE \$50.00



4 x 10 Front Speaker
 Single mono style for original applications. 1965-70 Galaxie (exc 69 Conv)
P18-28930-100 \$24.00



5 x 7 Dash Speaker
 Single cone - OEM style replacement 1967-68 All
P18-28930-116
\$17.50 each



Exhaust Deflectors
 Stainless steel - for through the bumper exhaust. 1956 Ford
P18-28240-055 \$39.95 pair



Air Conditioner Registers
 Vents - Chrome plated 1963-65 All
P19-30350-005 \$23.00



Steering Tube Seal
 Fits on top of the floor mat 1949-58 Ford & 1949-51 Mercury
VB1-31550 \$6.00



Firewall Insulation Clip 1949-72 All
VB1-31535-005 \$1.50



Air Conditioner Registers
 Vents - Chrome plated 1966 All
P19-30350-010 \$23.00



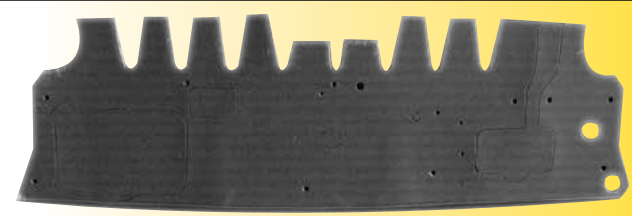
Firewall Sound Deadner Insulation - Die cut with insulation padding on the back side. 1959 Ford
PB1-31535-060 \$40.00

Door Latch Cylinder & Keys

1952-63 Ford
P21-41455-100
\$47.00 set



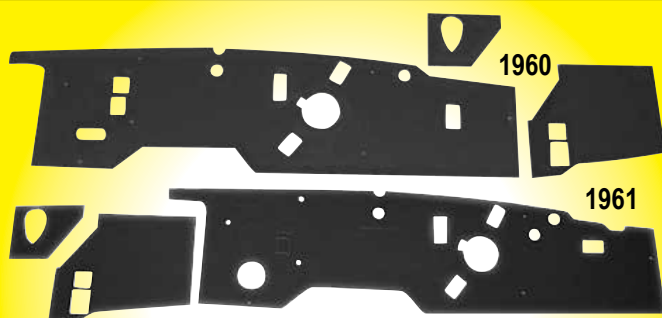
Firewall Sound Deadner Insulation - Die cut with insulation padding on the back side. 1949-50 Ford
PB1-31535-025 \$40.00



Firewall Sound Deadner Insulation - Die cut with insulation padding on the back side. 1955-56 Ford
PB1-31535-030 \$40.00



Firewall Sound Deadner Insulation - Die cut with insulation padding on the back side. 1957-58 Ford
PB1-31535-050 \$40.00



Firewall Sound Deadner Insulation - Die cut with insulation padding on the back side.

1960 Ford **PB1-31535-085 \$40.00**
 1961 Ford **PB1-31535-095 \$40.00**
 1962 Ford **PB1-31535-110 \$40.00**
 1963 Ford & Mercury **PB1-31535-120 \$40.00**
 1964 Ford **PB1-31535-125 \$40.00**



Sun Visor Arm & Bracket
 Chrome plated - fits either side
 1967-70 Ford - all
PB4-34035-150 \$12.00 each

Door Latch Cylinder & Keys

1965-72 Ford
P21-41455-050
\$12.00 set



Glove Box V8 Emblem

Chrome plated with red accents. 1955-56 Ford
PB4-34130-005 \$13.00



Expires 1-31-20

1-800-654-3247

XMAS SALE



**Gloveboxes - USA
Made**

**YOUR CHOICE
\$15.00 ea**

- 1949-50 Ford **PB5-35005-020**
- 1951 St Wagon **PB5-35005-020**
- 1951 Ford **PB5-35005-005**
- 1952-53 Ford **PB5-35005-085**
- 1955 Ford (w/o air) **PB5-35005-030**
- 1956 Ford (w/o air) **PB5-35005-045**
- 1957-58 Ford (w/o air) **PB5-35005-060**
- 1959 Ford **PB5-35005-080**
- 1960-62 Ford **PB5-35005-110**
- 1963 Ford **PB5-35005-140**



1965-68 Ford & Mercury Door Sill Scuff Plates fits all 2-door body styles **PB9-39045-305 \$99.00 pair**



1961-62 Ford Door Sill Scuff Plates fits all 2-door body styles **PB9-39045-260 \$99.00 pair**



1963-64 Ford Door Sill Scuff Plates fits all 2-door body styles **PB9-39045-265 \$99.00 pair**



Inside Door Handle
Chrome plated - fits either side. 1963-64 Ford **P22-42270-040 \$6.00**



Window Crank Handle Chrome with black knob 1950-56 Ford **P23-43110-025 \$15.00 each**

Happy Holidays

Chrome Plated Inside Door Handles

1968 Ford & Mercury
RH - **P22-42270-065**
LH - **P22-42275-020**
Either side - \$13.00



Chrome Outside Door Handle Set
Complete with hardware & mounting pads
1969-70 Ford **C22-42210-090 \$25.00**



Molded Carpet Set - 80/20 Loop Contoured to fit over the transmission tunnel to eliminate bulges and wrinkles • Pre-cut mounting holes • Original style compound heel pad attached • Backing material gives a soft, thick cushion effect for comfort as well as appearance.

(Colors: Black • Burnt Orange • Blue Green • Dark Olive • Dark Green • Dark Gold • Dark Blue • Sunset Glove • Brown • Orange • Charcoal • Parchment • Lt Green • Blue • Ford Blue • Coral • Gold • Gunmetal • Silver • Moss Green • Lt Med Saddle • Maroon • Plum • Red • Rose Beige • Med Saddle • Bright Blue • Dk Saddle • Squa • Copper • Dk Teal • Emberglow • Fawn Sandalwood • Midnight Blue • Med Blue • Teal Blue • Silver Mink • Ivy Gold • Medium Red.

Please provide the following information when ordering:

1.) Year - Make - Model of Car 2.) Color of Carpet 3.) Automatic or Standard Transmission 4.) Bench or Bucket seats 5.) Column or Floor Shift 6.) Power or Manual Seats 7.) Does it have a Console? 8.) Does it have Footwells in the floor pan?

1949-72 Ford/Mercury (exc Wagon) **Z13-20000-240 \$235.00**



Door Handle & Window Crank Handle

Escutcheon Plate
1952-59 Ford (door)
1953-59 Retractable
& Convertible (1/4 window)
F22-42300-010 \$5.00 each

Upper Vent Window Pivots
Stainless Steel

1950-51 Convertible
P22-42405-005 \$15.00 pair

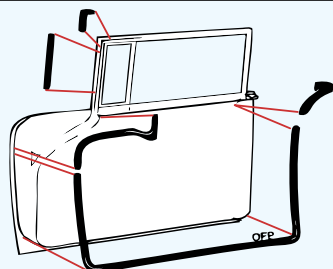


Door & 1/4 Window Regulator Arm Roller
1959-66 Ford
P23-43070-005 \$2.00



Door & 1/4 Window Regulator Arm Roller
1952-58 Ford
P23-43070 \$2.00

Happy Holidays



Door Seal Kit

These kits are new, made in the USA reproductions. They are exact in every detail. They include the front, top, back and bottom sides with specially molded corners as came originally on your car. No detail is left out. One kit is enough for one car. Glue on with black weatherstrip adhesive.

1949-51 Ford [®] Closed Car 2-Door	8A-20530-70S	\$99
1949-51 Ford [®] Closed Car 4-Door	8A-20530-73S	\$189
1949-51 Ford [®] Convertible	8A-20530-76S	\$119
1949-51 Mercury [®] ... 2-Door Sedan	8M-20530-70S	\$119
1949-51 Mercury [®] ... 4-Door Sedan	8M-20530-73S	\$199
1949-51 Mercury [®] ... Convertible.....	8M-20530-76S	\$89
1951 Ford [®] Victoria	8A-20530-76S	\$79
1952-54 All	BA-20530-70S	\$99
1952-54 Ford [®] 4-Door Sedan	BA-20530-73S	\$221
1952-54 Ford [®] Convertible and Victoria Hardtop.....	BA-20530-76S	\$99
1952-54 Mercury [®] ... Coupe and Convertible.....	BA-20530-76S	\$99
1955 Ford [®] Fairlane and Victoria 2Dr Hardtop.....	B5A-20530-60S	\$99
1955 Mercury [®] Coupe and Convertible.....	B5A-20530-60S	\$99
1955 All.....	B5A-20530-70S	\$99
1955 All.....	B5A-20530-73S	\$229
1955 Ford [®] Convertible and Crown Victoria	B5A-20530-76S	\$99
1956 All.....	B6A-20530-70S	\$99
1956 Ford [®]	B6A-20530-73S	\$229
1956 Ford [®] Convertible and 2Dr Hardtop	B6A-20530-76S	\$99
1957-58 Ford [®] Fairlane 2-Door body #64.....	B7A-20530-64S	\$119
1957-58 Ford [®] Fairlane 500 Club Sedan	B7A-20530-64S	\$119
1957-58 Ford [®] #59 2-Dr Ranch Wagon and #66 Ranchero - #78 Sedan Delivery #70 Custom 2-Dr Sedan	B7A-20530-70S	\$99
1957-58 Ford [®] #73 4-Door Sedan	B7A-20530-73S	\$239
1957-58 Ford [®] #51A Retractable and #63 Fairlane 500 2-Door Hardtop #76 Convertible	B7A-20530-76S	\$99
1959 Ford [®] #59 2-Door St Wagon and #64 2-Door Sedan and #66 Ranchero.....	B9A-20530-70S	\$99
1959 Ford [®] 4-Door Sedan and St Wagon	B9A-20530-73S	\$239
1959 Ford [®] Retractable, Convertible and 2-Door Hardtops	B9A-20530-76S	\$99
1960 Ford [®]	C0AZ-20530-62S	\$99
1960-61 Ford [®] Starliner.....	C0AZ-20530-76S	\$99
1960-62 Ford [®] 4-Door Sedan and St Wagon	C0AB-20530-54	\$119
1960-62 Ford [®] Convertible.....	C0AZ-20530-76S	\$99
1961 Mercury [®]	C1AZ-20530-62A	\$99
1961-62 Ford [®] 2-Door Ranch Wagon, 2-Door Galaxie Sedan, #64 Fairlane 500, Custom 300 2-Door Sedan	C1AZ-20530-62A	\$99
1962 All.....	C2AZ-20530-65S	\$99
The Following are Front Door Seal Kits Only - Rears are Sold Separately		
1963-64 All	C3AZ-20530-54	\$123
1963-64 All	C3AZ-20530-62A	\$99
1963-64 All	C3AZ-20530-65S	\$109
1963-64 All	C3AZ-20530-76S	\$109
1965-68 Ford [®]	C5AZ-20530-54S	\$109
1965-68 Ford [®] #57 4-Door Hardtop	C5AZ-20530-57S	\$109
1965-68 Ford [®] #62 2-Door Sedan.....	C5AZ-20530-62A	\$109
1965-68 Ford [®] #63 2-Door Hardtop and Fastback	C5AZ-20530-63A	\$109
1968 Ford [®]	C5AZ-20530-63A	\$109
1969-72 Ford [®]	C9AZ-20530-54S	\$109
1969-72 Ford [®]	C9AZ-20530-63A	\$109

Crestliner
Crestliner

Rear 1/4 Emblems - Crestliner
1954 Ford Convertible
M25-45030-065 \$75.00 pair



Crown Victoria

Rear 1/4 Emblem - Crown
Victoria 1955-56 Ford
P25-45030-005 \$44.00 each

Fairlane 500
Fairlane 500

Rear 1/4 Panel Emblems - Fairlane 500
1957-58 Ford **P25-43030-035 \$105.00 pair**

Ranchero

Rear 1/4 Emblem - Ranchero
1957-58 Ford Ranchero
P25-45030-040 \$40.00 each



Polished Stainless
Body Side Stone
Guards
1955-56 Ford[®]
1956 Mercury[®] Station
Wagon
P25-45050
\$29.00 pair

Ranchero

Rear 1/4 Emblem - Ranchero
1959 Ford Ranchero
P25-45030-055 \$120.00 each

Coat Hanger
Clip

with mounting
screws.
1953-63 Ford
1952-63 Mercury
1965-66 Ford Convertible
1967 All
P29-49025 \$4.50 each



Body Side Emblem
& Retainer
1954-59 Ford
(Emblem) **M25-45055**
(Retainer) **P25-45060**
\$21.00 each



1949-51 Steel Fender Skirts

3-Rib design - in primer. Comes with hardware for mounting. **P27-47140 - \$145.00 pair**



1952-54 Steel Fender Skirts

Die stamped steel - in primer. Comes with hardware for mounting. **P27-47140-030 - \$179.00 pair**



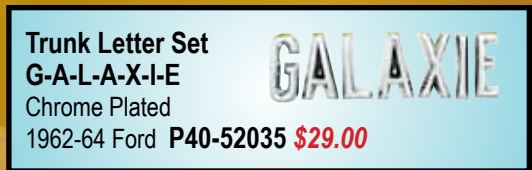
Fender Skirt Stone
Guards Polished stainless
steel 1952-54 Ford[®]
P29-29175-030
\$23.00 pair



1955-56 Steel Fender Skirts
Die stamped steel - in primer.
P27-47140-010 - **\$135.00 pair**



Fender Skirt Stone Guards
Polished stainless steel 1955-56 Ford®
P29-49175 **\$35.00 pair**



Trunk Letter Set
G-A-L-A-X-I-E
Chrome Plated
1962-64 Ford P40-52035 **\$29.00**



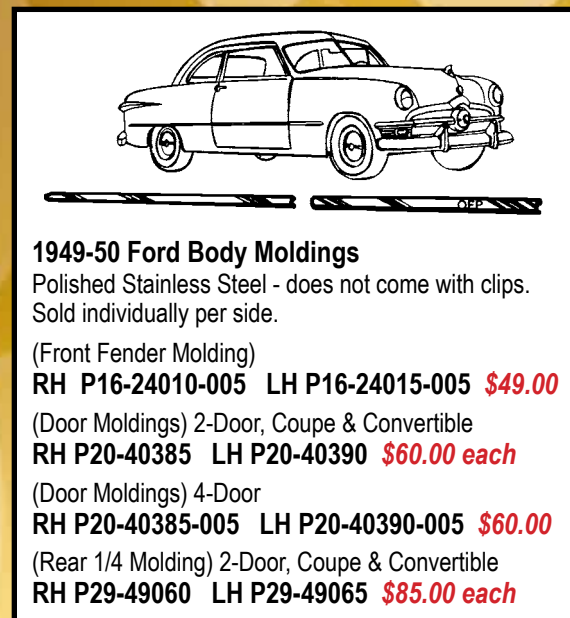
1957-58 Steel Fender Skirts
Die stamped steel - in primer. Comes with hardware for mounting. P27-47140-025 - **\$129.00 pair**



Fender Skirt Stone Guards
Polished stainless steel 1955-56
P29-49175-020 **\$21.00 pair**



Trunk Letter Set
F-O-R-D
Chrome Plated 1964 Ford (exc St. Wagon)
P40-52035-013 **\$29.00**

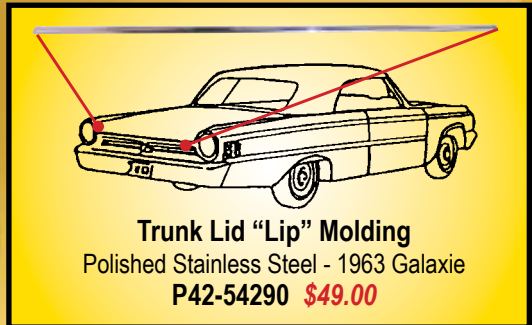


1949-50 Ford Body Moldings
Polished Stainless Steel - does not come with clips. Sold individually per side.

(Front Fender Molding)
RH P16-24010-005 LH P16-24015-005 **\$49.00**
(Door Moldings) 2-Door, Coupe & Convertible
RH P20-40385 LH P20-40390 **\$60.00 each**
(Door Moldings) 4-Door
RH P20-40385-005 LH P20-40390-005 **\$60.00**
(Rear 1/4 Molding) 2-Door, Coupe & Convertible
RH P29-49060 LH P29-49065 **\$85.00 each**



Trunk Emblem & Housing
1950-54 Ford (all)
1955-56 Ford (except Fairlane)
(Emblem) P42-54295 **\$27.00**
(Housing) P42-54300 **\$17.00**



Trunk Lid "Lip" Molding
Polished Stainless Steel - 1963 Galaxie
P42-54290 **\$49.00**



Trunk Emblem & Retainer
1955 Fairlane
(Emblem) P42-54295-005
(Retainer) P42-54300-005
\$53.00 each



Trunk Lid Emblem
1956 Fairlane P42-54295-010 **\$79.00**



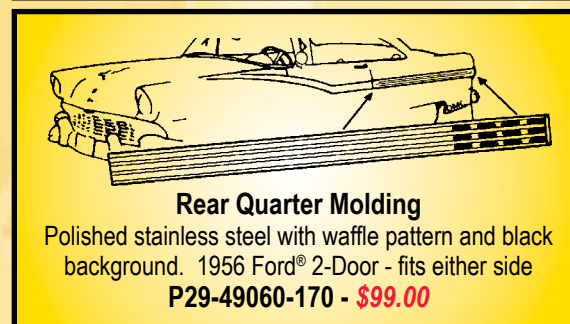
1955 Ford Rear Quarter Molding
Polished Stainless Steel - fits either side - for 2-Door models only P29-49060-005 **\$49.00 each**



Overdrive Trunk Script Emblem
Die cast - Chrome plated 1953-55 Ford Car
P42-54310-030 **\$24.00**



Galaxie Trunk Lid Script
Die cast chrome plated - 1961 Ford
P42-54310-035 **\$59.00**



Rear Quarter Molding
Polished stainless steel with waffle pattern and black background. 1956 Ford® 2-Door - fits either side
P29-49060-170 - **\$99.00**



Trunk Lid Hinges
Pressure die cast - triple chrome plated - 1949 Ford
P42-54360-004 **\$140.00 pr**



Trunk Lid Hinges
Pressure die car - triple chrome plated
1950 Ford
P42-54355-020 **\$140.00 pr**

1-800-654-3247



Trunk Lid Cylinder & Keys
1952-59 Ford (all)
P43-55250-005 **\$20.00**

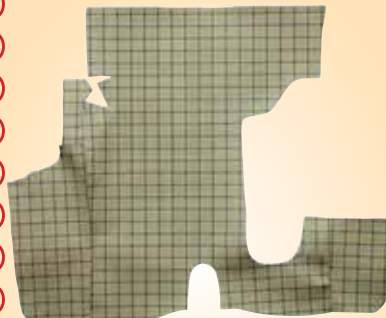
Deck Lid Lock Cylinder & Cover Assy

1955-57 Fairlane
(exc Retractable & St Wagon)
P43-55310 **\$36.00 each**



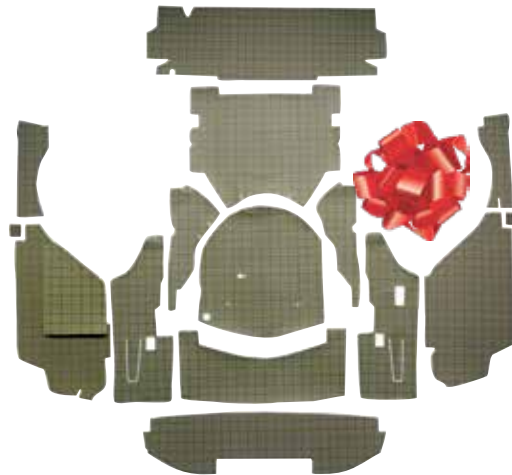
Rubber Trunk Lid Seals

1949-51 Mercury
1949-59 Ford & 57-59 Retractable (sides & back)
P43-55335-030 **\$17.00**
1957-59 Retractable (front with molded corners)
P43-55335-015 **\$35.00**



Trunk Mat Correct pattern - fleece mat 1957 Ford Custom
P45-57060-065 **\$59.00**

1959 Galaxie
P45-57060-100 **\$79.00**



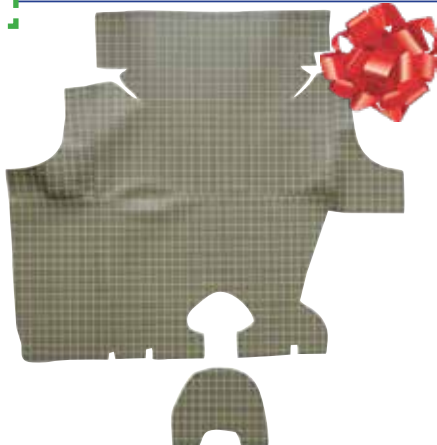
Trunk Mat Kit Complete with side boards. Complete kit to redo trunk area. 1957-59 Skyliner Retractable P45-57060-055 **\$225.00**



Trunk Mat Correct spatter pattern - 1962 Galaxie P45-57060-020 **\$89.00**
1963-64 Galaxie P45-57065-040 **\$89.00**



Trunk Lid Seal Kit
1960-62 Ford & Mercury
P43-55335-035 **\$9.00**



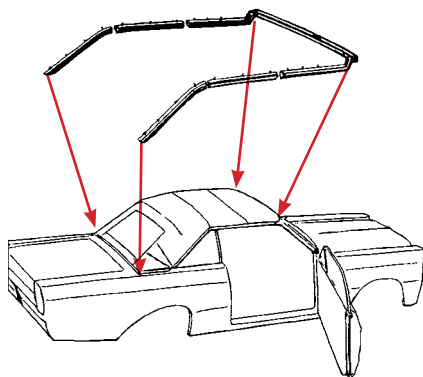
Trunk Mat Correct pattern - 1960 Galaxie P45-57060-110 **\$89.00**



Trunk Lid Seal Kit
1963-64 Ford
P43-55335-045 **\$12.00**



Trunk Lid Seal (219" long)
1965-72 Ford & Mercury (all) may need to cut to fit depending on application.
P43-55335-050 **\$19.00**



Convertible Top Weatherstrip Kits
with metal inserts - USA made

1960-62 All P51-62125-050 **\$375.00**
1963-64 All P51-62125-060 **\$375.00**
1965-68 All P51-62125-070 **\$409.00**
1969-72 All P51-62125-090 **\$465.00**



Trunk Mat Correct Spatter Pattern
1965-66 Galaxie
P45-57060-130 **\$89.00**





Roof Side Emblem

1963-64 Ford (exc Convertible and Fastback)

B51-62230 \$25.00 each



Seat Mounting Hole Plugs

Goes in the bottom of the floor pan.

Set of 4 pcs. 1965-70 Ford (all)

PC2-76553-020 \$6.00



Roof Side Emblem

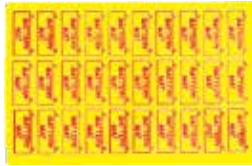
Housing Chrome Plated

1963-64 Ford (exc Convertible and Fastback)

B51-62265-010 \$25.00

Battery Mat

Lays in the bottom of your tray. Universal Application.



M-96-BMAT \$4.00



Technalon Car Cover

Highest UPF Rating of all K-C Fabrics - 4 layer barrier - protects against bird droppings, tree sap, and other organic substances that can ruin your paint job. Breathable - allows moisture and heat under the cover to easily escape - 4 year warranty. Double stitched seams and neoprene elastic hems. Custom fit to your car. *NOTE: Will need the following information when ordering:*

Year - Make - Model & Color

Available in Gray or Tan.

CC-99999-SPO Your Choice \$225.00

Front Seat Belt Kit

Polished chrome buckle lid. Easy lift up release design. Mounting anchors are snaps and require the eye of included eyebolt connectors for installation. 1949-72 Ford & Mercury applications (Colors available:

Black • Chestnut • Chocolate • Cream • Dk Blue • Maroon

Dk Green • Dk Gray • Flame Red • Gunmetal Gray •

Ivy Gold • Lt Gray • Olive Green • Orange • Powder Blue • Purple • Royal Blue • Dk Red • Tan • Teal •

Turquoise • Yellow

P62-67131+color \$35.00 each belt kit



Hot Rod Garage Neon Clock

Chrome rim
15" dia
Electric neon with battery operated clock
USA Made!

CL-99-HRG \$59.00



CL-99-CHBU



CL-99-CHGU



CL-99-RDU



CL-99-WHU



CL-99-YLU

NEON Wall Clock - These colorful wall clocks are the perfect addition to brighten up any room, garage, office or man cave. Chrome rim with choice of neon colors. Neon is electric, while clock is battery operated. 15" Diameter. **Your Color Choice \$59.00**



Obsolete & Classic T-Shirt

Grey or Black T-Shirts

Black Small **TS-99-BS**

Black Medium **TS-99-BM**

Black Large **TS-99-BL**

Black X-Large **TS-99-BXL**

Black XX-Large **TS-99-BXXL**

Black 3X-Large **TS-99-B3XL**

Grey Small **TS-99-GS**

Grey Medium **TS-99-GM**

Grey Large **TS-99-GL**

Grey X-Large **TS-99-GXL**

Grey XX-Large **TS-99-GXXL**

Grey 3X-Large **TS-99-G3XL**

YOUR CHOICE \$15.00



www.ClassicAutoParts.com • 800-654-3247

Obsolete & Classic Auto Parts, Inc.

PARTS FOR FORD® CARS & TRUCKS

8701 South I-35 • Okla City, OK 73149
www.ClassicAutoParts.com

PRESORT STD
US POSTAGE PAID
OKLAHOMA CITY, OK
PERMIT No. 763

Happy Holidays

Tris

Kevin

Reg

Bobby

Sydney

Mallory

Wes

Daniel



For the hard to buy "guy" or "girl" we offer Gift Certificates in any amount. Simply order **GIFT CERTIFICATE** or ask your sale representative. We can make your gift giving as seamless as possible!

We stock parts from 1909-79 Pickups and 1909-73 Passenger Car. Any single catalog is FREE of charge. Our catalogs are also online at www.classicautoparts.com. They are fully interactive for ordering. Feel free to call us toll free at 1-800-654-3247. Hours M-F 8 am to 5:30 pm Sat 8 am to Noon. Flier Pricing Valid thru January 2020. All prices are Less Freight.

ClassicAutoParts.com