

annette raff  
watercolour lessons

advanced lesson - Market Lane



Annette Raff

[www.watercolourlessonsonline.com](http://www.watercolourlessonsonline.com)



## advanced lesson - "Market Lane"

### before you begin...

#### Welcome to Annette Raff Watercolor Lessons!

The Advanced Lessons are designed for those that have already mastered the basics in watercolor painting skills. They will take you further on your watercolor journey introducing more complex subject matter and increasing wet-on-wet blending skills. There are a variety of subjects to choose from in the advanced level lessons including, still life, flowers, landscapes and animals.

You will be introduced to more colors and you will gain confidence in mixing your pigments.

Remember: It is still quite normal to "mess up" paintings. This is the nature of watercolor as it is a comparatively *fast* medium and corrections are often not possible. It is still essential for you to practice the **Free Tips'n'Tricks video demonstrations**, especially if you are becoming frustrated. Think of these as '*limbering up exercises*', essential to getting you ready to paint!

I hope you have taken advantage of the "Watercolor Club" membership which entitles you to a free sample lesson and ongoing discounts on your future lesson purchases.

Take a look at the **Students' Gallery** and you may wish to upload one of your completed paintings!

I wish you all the best on your watercolor journey.

To gain the most from these lessons the following steps are recommended

1. You have the option to view the PDF Lesson on your screen or to print it. It is recommended that you use good photo quality paper. Read through the *entire lesson before you begin to paint*, so you have an insight into the painting process.
2. Before starting this lesson, you will find it beneficial to view the following **Free "Tips'n'Tricks" video demonstrations**:-

- **Watercolor Paper & Preparation**
- **Charging**
- **Using Masking Fluid**
- **Wet-on-Wet Underwash**
- **Beaded Wash on Dry**

These techniques are relevant to this painting and you should view these and practice them before beginning the painting. You can access these from the "Free Lessons" tab on my website.

3. When you have viewed and practiced the **Free "Tips'n'Tricks" video demonstrations** you will be ready to begin the painting.
4. As you are painting please *read ahead* through each step, on the page you are following, so that you are better prepared.
5. After you have completed your painting you can repeat the lesson until you feel comfortable with the techniques that are taught.
6. You can then move on to one of my next lessons!

[www.watercolorlessonsonline.com](http://www.watercolorlessonsonline.com)

## advanced lesson - "Market Lane"



### Market Lane

- Aims:**
- begin a painting with a wet-on-wet underwash to set mood and atmosphere, and to create harmony.
  - to paint within a shape with a 'beaded' wash
  - to build up tonal values with overlapping washes
  - charging a wet wash with stronger colour

### You will need

- 7 tubes watercolor paint
  - Burnt Sienna
  - Cerulean Blue
  - Cobalt Blue
  - French Ultramarine Blue
  - Permanent Rose
  - Permanent Alizarin
  - Aureolin (or other substitute yellow)
- 1 tube white gouache
- 4 Brushes
  - Small round watercolor brush - size 6 or 8
  - 2 large mop brushes
  - Extra brush for adding water
- 4B pencil
- red or blue pen (biro)
- Household masking tape
- Watercolour Paper 300 or 185gsm 100% cotton "artist quality" A4 size "cold pressed" (medium surface)
- Small piece of watercolor paper to test colours
- Palette
- 2 Jars of water
- Crepe Eraser (specially for removing masking fluid)
- Hairdryer
- Cotton Rag

## advanced lesson - "Market Lane"

To begin ...

**1** Print out the line drawing of the daffodils on the previous page onto A4 copy paper.

You will need to have a sheet of Watercolor Paper in **cold-pressed** or **medium** surface. (see [Tips 'n'Tricks Video' - Watercolor paper & Preparation](#)). Cut your watercolor paper a little larger than the drawing you have printed out and stick with a little masking tape to a board for support.

Now take your printed picture, place **drawing side down** onto a soft surface (such as a magazine or newspaper). Rub the **back** of this printed drawing with a **4B or 6B pencil**. Make sure you rub with plenty of dense lead or your tracing will be hard to see. There should be no white paper showing through!

Place this printed drawing with the **back down** (now covered in pencil), **drawing side up**, on to your watercolor paper and secure with a little tape in the top two corners.

Now trace over the lines of the printed drawing with preferably a red pen. Press firmly! Lift the paper at the bottom of one corner occasionally to make sure your tracing is coming through. When you have finished tracing all the lines, remove the printed picture and you should see the drawing now on your watercolour paper. Use masking tape along all four sides of your drawing to secure it to the board. You are now ready to paint!

Don't forget to have your board on a slight angle of about 20 to 30 degrees when painting.

**Note:** You can also draw *freehand* straight on to your watercolor paper if you wish.

**2**

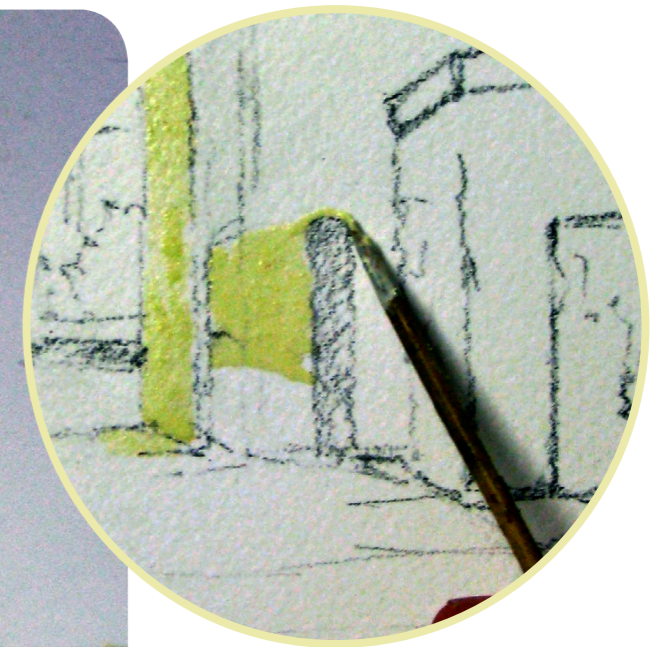


The areas to apply masking fluid are shown here in green.

You may also wish to use a toothpick to apply masking fluid to very tiny areas.

Masking fluid needs to be applied with precision as it leaves a very definite white edge.

You can add a little water to your masking fluid to make it easier to work with.



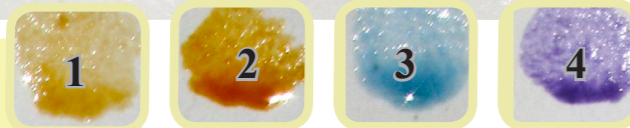
Apply masking fluid with a very fine brush or a toothpick.

In preparation for your first wet-on-wet wash you will need to apply masking fluid.

Use a small brush with a fine tip but not an expensive brush as masking fluid can damage brushes easily.

## advanced lesson - "Market Lane"

3



See Free Lessons  
tab  
Tips 'n' Tricks  
Video  
"Wet-on-wet underwash"

Have your board flat for this step. It is best to use two separate large mop brushes to mix your colours (one for the gold colours and one for the blue) so that you can brush on the colours quickly.

Mix the following four colours in large puddles to match the swatches above.

1. A weak gold colour using New Gamboge and Permanent Rose
2. A darker gold using the same two colours, as in "1" but this time add Burnt Sienna.
3. A weak puddle of Cerulean Blue.
4. a medium consistency wash of blue-purple using Cobalt Bue and Permanent Rose.

4

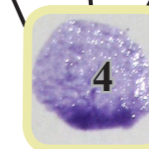


Now use a separate large brush to wet the entire surface. Brush on the lightest warm gold colour(1) in the sky area. It will run further down and this is okay. Now quickly brush on the Cerulean Blue(3) in the same area over the gold colour. This also will run over the buildings. Do not panic, though, this is just what we want.

While still wet, brush on the darker gold colour(2) onto the buldings. It will run a little out of the lines, but again, this will give us a lovely wet-on-wet effect and will add atmosphere to the final painting.

Quickly add more of the darker gold colour back over where you have painted to deepen the shadow sides of the buildings and the shadow from the wall on the left.

5



While still wet, brush on the purple colour(4) over the shadow areas again. It will run a little out of the lines, but again, this is the soft effect we want.

Dry off completely.

*As this is a 'sample' lesson I have left a number of steps out. Therefor the following Step is Number 12.*

## advanced lesson - "Market Lane"

12

Paint the light blue wash onto the front wall of this building using a 'beaded' wash

See Free Lessons tab  
Tips 'n' Tricks Video  
"Beaded wash on Dry"



Mix Cobalt Blue with water to match the swatch above..

Begin painting the wall of the building at the far end of the street with a 'beaded' wash on dry.

Make sure to go **around** the light window panes.

13

Paint the shadows as shown here.

See Free Lessons tab  
Tips 'n' Tricks Video  
"Charging"



Mix a puddle of medium consistency color to match the swatch above using French Ultramarine Blue, a little Permanent Rose and a little Aureolin.

Use a different brush to mix another wash with the same colors only use more water to make a lighter tone.

Begin painting, with a 'beaded' wash on dry with the lighter color, stopping now and again to '**charge**' the lighter color with the darker one.

Start at the shadow under the eave of the building on the left. Also darken the chimney a little. Then skip across the street to the rooftops on the right side. Continue to paint first with the lighter color and use a separate brush to '**charge**' the lighter wash with the darker one, as you go. Take this wash down the wall of this building and add the shadow on the road as shown above.

This technique gives more tonal variation and adds interest to your washes.

14



Mix a large puddle of strong consistency grey colour to match the swatch above using

French Ultramarine Blue, Permanent Alizarin and a little Burnt Sienna.

Mix a separate small puddle of a beige colour using Burnt Sienna and a very tiny amount of Cobalt Blue.

Use a small brush with a fine tip to darken the windows at the far end of the lane, the eave of this building and the chimney also.

Add dark accents to the foliage in both areas and here and there on the buildings on the right.

I also added white guache to the windows on the sunlit wall of the building on the right and neatened up some of the white areas. The distant building at the end of the street needed a very light beige colour and the wall in the foreground on the right side of the painting also needed a light wash of beige.

## advanced lesson - "Market Lane"



**Congratulations!** You have finished the advanced Lesson, "Market Lane".

You can now sit back and access your painting. You will have learned to charge washes with stronger colour and with variations of colours.

There will probably be parts of the painting that you are very happy with and there may be other parts that could be improved.

If there are certain techniques that you had difficulty with, it will help to go back to the "*Tips'n'Tricks*" free video demonstrations and practice these until you feel comfortable with them. You will probably find it beneficial to do the painting again, now that you are familiar with some of the basics.

**You can now move on to one of my next lessons.  
There are many to choose from!**

**I hope you have taken advantage of the  
"Watercolor Club" membership which entitles  
you to a 20% discount on your future lesson  
purchases.**

A handwritten signature in blue ink, reading "Annette Raff".