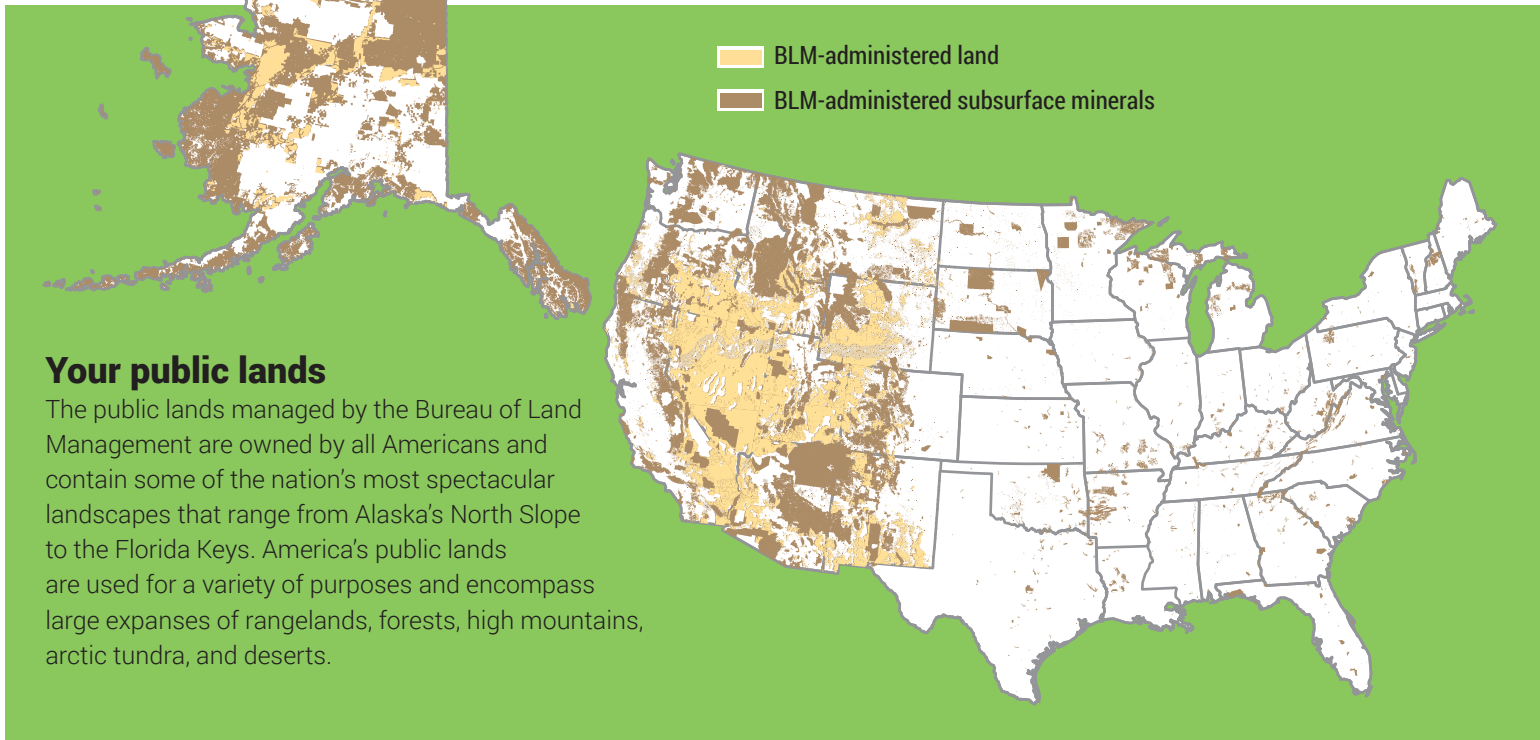


# The Bureau of Land Management



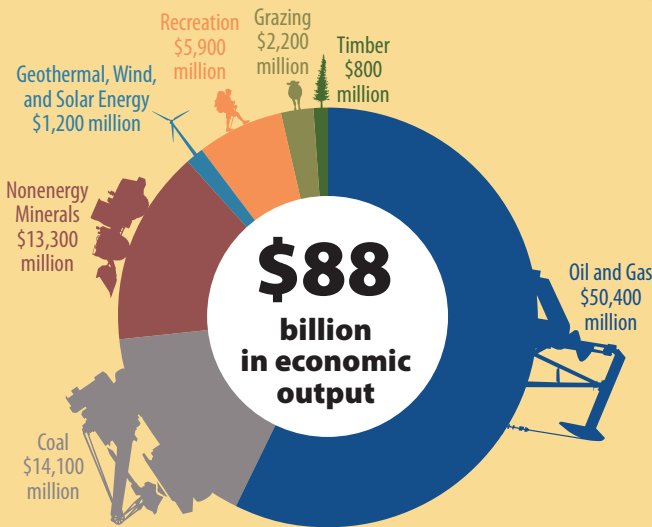
Manages more than 1/10 of the nation's surface area and 30% of the nation's minerals and soils.



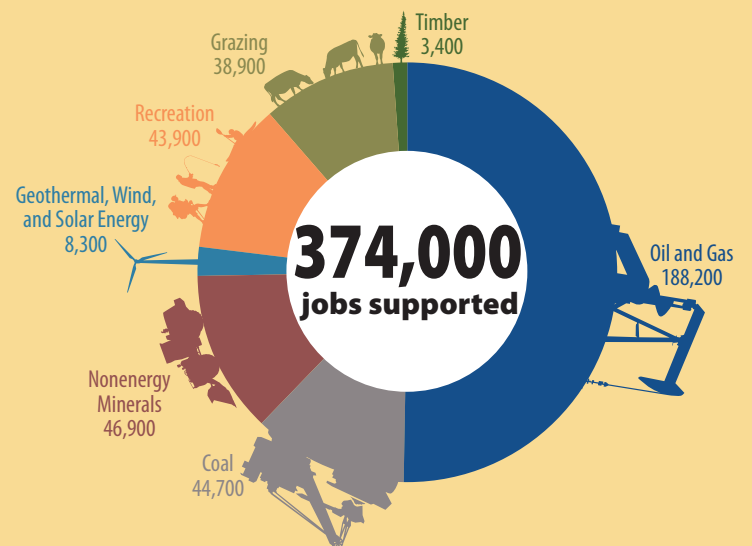
## Your public lands

The public lands managed by the Bureau of Land Management are owned by all Americans and contain some of the nation's most spectacular landscapes that range from Alaska's North Slope to the Florida Keys. America's public lands are used for a variety of purposes and encompass large expanses of rangelands, forests, high mountains, arctic tundra, and deserts.

## Economic contributions from America's public lands



**Did you know?** The BLM is one of a handful of federal agencies that brings in more revenue than it spends.



## Public involvement is the cornerstone of the land use planning process



## National Conservation Lands

Since the year 2000, the BLM has become the lead agency in land conservation in the United States.

The BLM manages nearly

# 2/3

of the wilderness acres designated by Congress in the past 15 years.



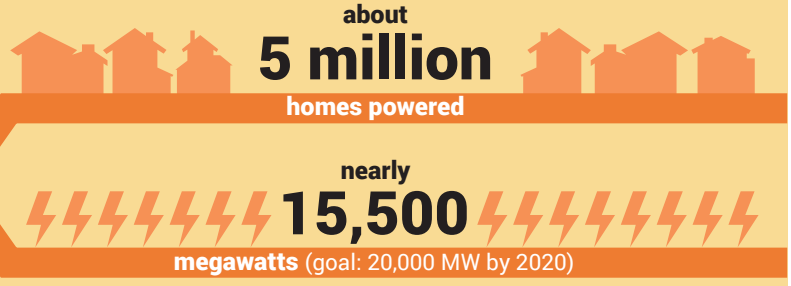
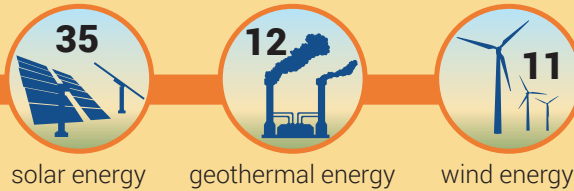
The BLM manages:  
**25 national monuments**  
**21 national conservation areas**  
**8.8 million wilderness acres**

## Outdoor recreation

More than **99%** of BLM-administered lands are available for recreational use with no fees.



## Renewable energy production



Expanding America's energy portfolio by approving 58 clean power projects since 2009.

## Responsible oil and gas production

approximately 100,000 wells

# \$2 billion in revenue

54,000 drilling permits approved in the last 10 years

**50%** state and local governments

**50%** U.S. Treasury

## Wildlife and habitat conservation



Manages more wildlife habitat than any other federal agency, supporting **3,000 species**.

Preserves and restores essential habitat for **245 threatened or endangered species**.

For more information  
[www.blm.gov](http://www.blm.gov)

@BLMNational 
 flickr.com/mypubliclands/ 
 mypubliclands.tumblr.com 
 @MyPublicLands 
 youtube.com/BLMNational 
 pinterest.com/mypubliclands

May 2016 - Based on fiscal year 2015 data