

# USAF MAJOR COMMANDS AND AIR NATIONAL GUARD

The Air Force has nine major commands and two Air Reserve Components. (Air Force Reserve Command is both a majcom and an ARC.) In late 2019, Air Force Space Command was redesignated U.S. Space Force, a separate military branch under the Department of the Air Force.

**A**s significant subdivisions of the Air Force, major commands conduct a considerable part of the service's mission and are directly subordinate to Headquarters USAF.

Majcoms are organized on a functional basis in the U.S. and on a geographic basis overseas. In addition to accomplishing designated portions of USAF's worldwide activities, they organize, administer, equip, and train their subordinate elements.

The majcom sits atop a skip-echelon staffing structure, which means every other organizational level (i.e., majcom, wing, and squadron) will have a full range of staff functions. The other organizations (NAF, group, and flight) are tactical, mission-centered echelons. These tactical echelons are designed to increase operational effectiveness without the burden of additional staff functions.

## AFGSC



### Air Force Global Strike Command

**Headquarters:** Barksdale AFB, La.

**Date of current designation:** Aug. 7, 2009

**Commander:** Gen. Timothy M. Ray

#### Primary Mission

Organize, train, equip, maintain, and provide ICBM forces and long-range bomber forces to combatant commanders; provide installation mission support.

#### AFGSC Structure



AFGSC AIRCRAFT BY TYPE	
B-1B	60
B-2A	19
B-52H	56
E-4B	4
T-38A	14
UH-1N	25

PERSONNEL	
<b>Active Duty</b>	<b>28,708</b>

EQUIPMENT (TOTAL AIRCRAFT INVENTORY)	
Bomber	135
Helicopter	25
ICBM	400
ISR/BM/C3	4
Trainer	14

Source: U.S. Air Force Total Aircraft Inventory (TAI) as of Sept. 30, 2020

MAJOR UNITS	LOCATION	AIRCRAFT/MISSION/WEAPON
2nd Bomb Wing (BW)	Barksdale AFB, La.	B-52H
5th BW	Minot AFB, N.D.	B-52H
7th BW	Dyess AFB, Texas	B-1B
28th BW	Ellsworth AFB, S.D.	B-1B
90th Missile Wing (MW)	F. E. Warren AFB, Wyo.	Minuteman III, UH-1N
91st MW	Minot AFB, N.D.	Minuteman III, UH-1N
341st MW	Malmstrom AFB, Mont.	Minuteman III, UH-1N
377th Air Base Wing	Kirtland AFB, N.M.	Nuclear operations, expeditionary force training, base support
509th BW	Whiteman AFB, Mo.	B-2A, T-38C
576th Flight Test Squadron	Vandenberg SFB, Calif.	Minuteman III
595th Command and Control Group	Offutt AFB, Neb.	Command and control, E-4B

# ACC



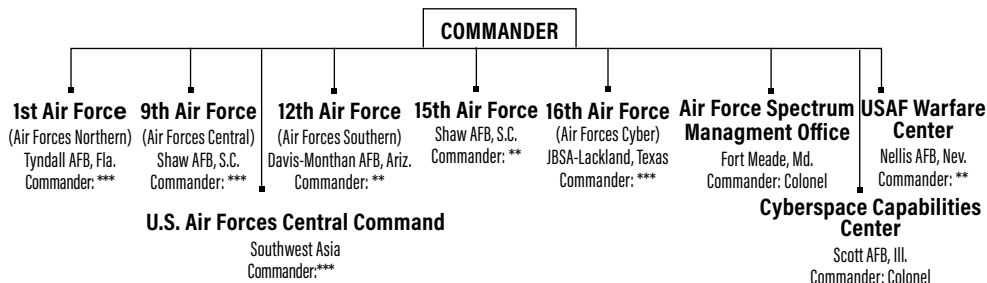
## Air Combat Command

**Headquarters:** JB Langley-Eustis, Va.  
**Date of current designation:** June 1, 1992  
**Commander:** Gen. Mark D. Kelly

### Primary Mission

Primary force provider of combat air power—fighter, conventional bomber, reconnaissance, battle management, and electronic combat aircraft—to combatant commands. Provide command, control, communications, and intelligence (C3I) systems. Conduct global information operations.

### ACC Structure



PERSONNEL	
<b>Active Duty</b>	<b>80,858</b>

EQUIPMENT (TAI)	
Fighter/Attack	694
Helicopter	39
ISR/BM/C3	352
Trainer	49

MAJOR UNITS	LOCATION	AIRCRAFT/MISSION/WEAPON
1st Fighter Wing (FW)	JB Langley-Eustis, Va.	F-22, T-38A
4th FW	Seymour Johnson AFB, N.C.	F-15E
9th Reconnaissance Wing	Beale AFB, Calif.	RQ-4, T-38A, U-2
20th FW	Shaw AFB, S.C.	F-16CM
23rd Wing	Moody AFB, Ga.	A-10C, HC-130J, HH-60G
53rd Wing	Eglin AFB, Fla.	A-10C, BQM-167A, E-9A, F-15C/D/E, F-16C/D, F-22A, F-35A, HC-130J, HH-60G, MQ-9, QF-4, QF-16, RQ-4, U-2
55th Wing	Offutt AFB, Neb.	EC-130H, OC-135B, RC-135S/U/V/W, TC-135S/W, WC-135
57th Wing	Nellis AFB, Nev.	A-10C, EC-130, F-15, F-15E, F-16, F-22A, F-35A, HH-60G (23rd Wing), MQ-9
67th Cyberspace Wing	JBSA-Lackland, Texas	Cyberspace operations
70th ISR Wing (ISRW)	Fort Meade, Md.	Cryptologic operations
93rd Air Ground Operations Wing	Moody AFB, Ga.	Battlefield Airmen operations, support
99th Air Base Wing (ABW)	Nellis AFB, Nev.	Base spt.
319th Reconnaissance Wing	Grand Forks AFB, N.D.	Base spt.
325th FW	Tyndall AFB, Fla.	F-22A
355th Wing	Davis-Monthan AFB, Ariz.	A-10, EC-130H, (55th Wing), F-16CG, HC-130J, HH-60G (23rd Wing)
363rd ISRW	JB Langley-Eustis, Va.	Multi-intelligence analysis, targeting
366th FW	Mountain Home AFB, Idaho	F-15E
388th FW	Hill AFB, Utah	F-16C/D, F-35A
432nd Wing	Creech AFB, Nev.	MQ-1, MQ-9, RQ-170
480th ISRW	JB Langley-Eustis, Va.	DCGS, cyber ISR, CFACC support, signals intelligence integration
461st Air Control Wing (ACW)	Robins AFB, Ga.	E-8C (AA)
505th Command and Control Wing	Hurlburt Field, Fla.	Command and control operational-level tactics, testing, training
552nd ACW	Tinker AFB, Okla.	E-3B/C/G
557th Weather Wing	Offutt AFB, Neb.	Weather information
601st Air Operations Center	Tyndall AFB, Fla.	Plan and direct air operations
616th Operations Center	JBSA-Lackland, Texas	Plan and direct cyber operations
633rd ABW	JB Langley-Eustis, Va.	Joint base facilities support
688th Cyberspace Wing	JBSA-Lackland, Texas	Information operations, engineering installations
AF Rescue Coordination Center	Tyndall AFB, Fla.	National search and rescue coordination
AF Technical Applications Center	Patrick SFB, Fla.	Nuclear treaty monitoring, nuclear event detection

### ACC AIRCRAFT BY TYPE

A-10	116	F-15E	158	OC-135B	2
AT-38	6	F-16C	149	RC-135S	3
E-3B	8	F-16D	19	RC-135U	2
E-3G	23	F-22A	115	RC-135V	8
E-9A	2	F-35A	116	RC-135W	9
E-11	3	HC-130J	16	RQ-4B	31
EC-130	11	HH-60G	39	T-38A	39
F-15C	18	MQ-1	5	TC-135W	3
F-15D	3	MQ-9	198	TU-2S	4
				U-2S	27

Source: U.S. Air Force Total Aircraft Inventory (TAI) as of Sept. 30, 2020

# AETC



## Air Education and Training Command

**Headquarters:** JBSA-Randolph, Texas

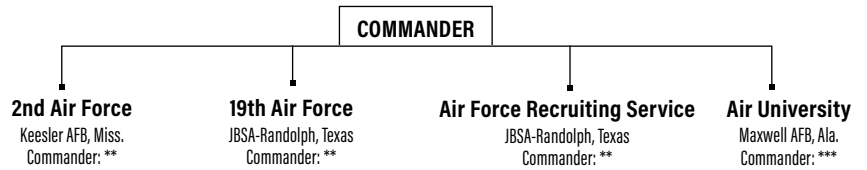
**Date of current designation:** July 1, 1993

**Commander:** Lt. Gen. Marshall B. "Brad" Webb

### Primary Mission

Recruit, train, and educate airmen through basic military training, initial and advanced technical training, and professional military education.

### AETC Structure



PERSONNEL		EQUIPMENT (TAI)	
<b>Active Duty</b>	<b>57,541</b>	Fighter/Attack	236
		Helicopter	22
		Tanker	18
		Trainer	1,130
		Transport	50

MAJOR UNITS	LOCATION	AIRCRAFT/MISSION/WEAPON
12th Flying Training Wing (FTW)	JBSA-Randolph, Texas	T-1A, T-6A, T-38C (CSO at NAS Pensacola, Fla.)
14th FTW	Columbus AFB, Miss.	T-1A, T-6A, T-38C (A-29 at Moody AFB, Ga.)
17th Training Wing (TRW)	Goodfellow AFB, Texas	Technical training
33rd Fighter Wing (FW)	Eglin AFB, Fla.	F-35
37th TRW	JBSA-Lackland, Texas	Basic military and technical training
42nd Air Base Wing (ABW)	Maxwell AFB, Ala.	Base support
47th FTW	Laughlin AFB, Texas	T-1A, T-6A, T-38C
49th Wing	Holloman AFB, N.M.	MQ-1, MQ-9, QF-16
56th FW	Luke AFB, Ariz.	F-16, F-35
58th Special Operations Wing	Kirtland AFB, N.M.	CV-22, HC-130J/P/N, HH-60G, MC-130H/J/P, UH-1N, TH-1H
59th Medical Wing	JBSA-Lackland, Texas	Wilford Hall Ambulatory Surgical Cntr.
71st FTW	Vance AFB, Okla.	T-1A, T-6A, T-38C
80th FTW	Sheppard AFB, Texas	T-6A, T-38C
81st TRW	Keesler AFB, Miss.	Technical training
82nd TRW	Sheppard AFB, Texas	Technical training
97th Air Mobility Wing	Altus AFB, Okla.	C-17, KC-135R, KC-46
314th Air Mobility Wing	Little Rock AFB, Ark.	C-130J
502nd ABW	JBSA-Fort Sam Houston, Texas	JBSA facilities support
AF Profession of Arms Center of Excellence	JBSA-Randolph, Texas	Professional training
AF Institute of Technology	Wright-Patterson AFB, Ohio	Postgraduate education
Carl A. Spaatz Center for Officer Education	Maxwell AFB, Ala.	Officer professional military education (PME)
Curtis E. LeMay Center for Doctrine Dev. & Education	Maxwell AFB, Ala.	Air Force doctrine development
Ira C. Eaker Center for Leadership Dev.	Maxwell AFB, Ala.	Professional and technical continuing education
Jeanne M. Holm Center for Officer Accessions and Citizen Development	Maxwell AFB, Ala.	Officer training, ROTC and JROTC oversight
Muir S. Fairchild Research Information Cntr.	Maxwell AFB, Ala.	Information resources
Thomas N. Barnes Center for Enlisted Education	Maxwell AFB, Ala.	Enlisted PME

### AETC AIRCRAFT BY TYPE

C-130J	14	KC-135R	17	T-53A	24
C-17A	17	KC-135T	1	TG-15A	2
CV-22B	8	MC-130J	5	TG-15B	3
F-16C	83	T-1A	178	TG-16A	19
F-16D	51	T-6A	442	TH-1H	28
F-35A	102	T-38C	427	UH-1N	10
HC-130J	3	T-41D	4	UV-18B	3
HH-60G	12	T-51A	3		

# AFMC



## Air Force Materiel Command

**Headquarters:** Wright-Patterson AFB, Ohio  
**Date of current designation:** July 1, 1992  
**Commander:** Gen. Arnold W. Bunch Jr.

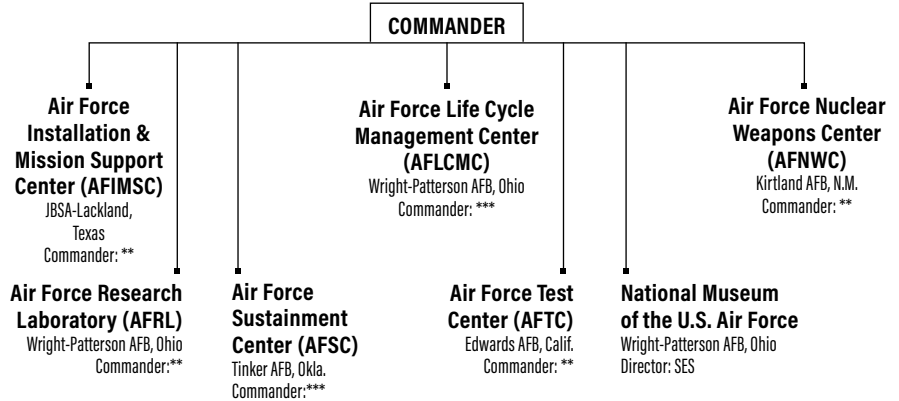
### AFMC Structure

### Primary Mission

Research, develop, procure, test, and sustain USAF weapon systems.

PERSONNEL	
<b>Active Duty</b>	<b>17,033</b>
EQUIPMENT (TAI)	
Bomber	5
Fighter/Attack	49
Helicopter	5
ISR/BM/C3	19
Tanker	1
Trainer	16
Transport	30

Source: U.S. Air Force Total Aircraft Inventory (TAI) as of Sept. 30, 2020



	MAJOR UNITS	LOCATION	AIRCRAFT/MISSION/WEAPON	AFMC AIRCRAFT BY TYPE
AFIMSC	AF Civil Engineer Center	JBSA-Lackland, Texas	Installation support (civil engineering)	
	AF Financial Management Center of Expertise	Buckley SFB, Colo.	Installation support (financial analysis)	A-10C <b>1</b>
	AF Financial Services Center	Ellsworth AFB, S.D.	Installation support (payment processing)	B-1B <b>2</b>
	AF Installation Contracting Center	Wright-Patterson AFB, Ohio	Enterprise contracting support	B-2A <b>1</b>
	AF Security Forces Center	JBSA-Lackland, Texas	Installation support (security forces programs)	B-52H <b>2</b>
	AF Services Center	JBSA-Lackland, Texas	Installation support (lodging, recreation)	C-12C <b>16</b>
AFLCMC	AF Prg. Exec. Officer-Agile Combat Support	Wright-Patterson AFB, Ohio	Sys. acquisition	C-12D <b>6</b>
	AFPEO-Armament	Eglin AFB, Fla.	Sys. acquisition	C-12F <b>1</b>
	AFPEO-Battle Management	Hanscom AFB, Mass.	Sys. acquisition	C-12J <b>1</b>
	AFPEO-Business and Enterprise Sys.	Maxwell AFB-Gunter Annex, Ala.	Sys. acquisition	C-40B <b>6</b>
	AFPEO-C3I and Networks	Hanscom AFB, Mass.	Sys. acquisition	F-15C <b>2</b>
	AFPEO-Fighters and Bombers	Wright-Patterson AFB, Ohio	Sys. acquisition	F-15E <b>5</b>
	AFPEO-ISR and Special Operations Forces	Wright-Patterson AFB, Ohio	Sys. acquisition	F-16C <b>13</b>
	AFPEO-Mobility	Wright-Patterson AFB, Ohio	Sys. acquisition	F-16D <b>22</b>
	AFPEO-Presidential Aircraft Recapitalization	Wright-Patterson AFB, Ohio	Sys. acquisition	F-22A <b>4</b>
	AFPEO-Tanker	Wright-Patterson AFB, Ohio	Sys. acquisition	F-35A <b>2</b>
	88th Air Base Wing (ABW)	Wright-Patterson AFB, Ohio	Base spt.	HH-60U <b>3</b>
	AFNWC	AFPEO-Nuclear Command, Control, and Communications	Hanscom AFB, Mass.	Sys. acquisition
AFPEO-Strategic Sys.		Kirtland AFB, N.M.	Sys. acquisition	MQ-9A <b>16</b>
Aerospace Sys.		Wright-Patterson AFB, Ohio	Research and development (R&D)	NC-135W <b>1</b>
AF Office of Scientific Research		Arlington, Va.	Research	RQ-4B <b>2</b>
AF Strategic Development Planning and Experimentation Office		Wright-Patterson AFB, Ohio	R&D	T-38C <b>16</b>
Directed Energy		Kirtland AFB, N.M.	R&D	UH-1N <b>2</b>
AFRL	Information	Rome, N.Y.	R&D	
	Materials and Manufacturing	Wright-Patterson AFB, Ohio	R&D	
	Munitions	Eglin AFB, Fla.	R&D	
	Sensors	Wright-Patterson AFB, Ohio	R&D	
	Space Vehicles	Kirtland AFB, N.M.	R&D	
	711th Human Performance Wing	Wright-Patterson AFB, Ohio	Airman performance R&E	
	Ogden Air Logistics Complex (ALC)	Hill AFB, Utah	Weapons sustainment	
	Oklahoma City ALC	Tinker AFB, Okla.	Weapons sustainment	
AFSC	Warner Robins ALC	Robins AFB, Ga.	Weapons sustainment	
	72nd ABW	Tinker AFB, Okla.	Base support	
	75th ABW	Hill AFB, Utah	Base and Utah Test and Training Range support	
	78th ABW	Robins AFB, Ga.	Base support	
	448th Supply Chain Management Wing	Tinker AFB, Okla.	Depot line repairables and consumables	
	635th Supply Chain Operations Wing	Scott AFB, Ill.	Global sustainment support	
AFTC	Arnold Engineering Development Complex	Arnold AFB, Tenn.	Flight, space, and missile ground testing	
	96th Test Wing (TW)	Eglin AFB, Fla.	Aircraft/system testing, base & range support	
	412th TW	Edwards AFB, Calif.	Aircraft/system testing, base & range support	
	U.S. Air Force Test Pilot School	Edwards AFB, Calif.	Pilot, navigator & engineer training for flight tests	

# AFRC



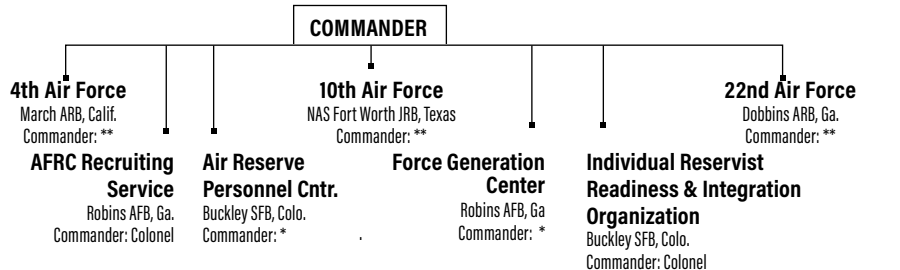
## Air Force Reserve Command

**Headquarters:** Robins AFB, Ga.

**Date of current designation:** Feb. 17, 1997

**Commander:** Lt. Gen. Richard W. Scobee

### AFRC Structure



### Primary Mission

Provide strike, air mobility, special operations forces, rescue, aeromedical evacuation, aerial firefighting and spraying, weather reconnaissance, cyberspace operations, ISR, space, flying training, and other capabilities to support the Active-duty force and assist with domestic and foreign disaster relief.

#### PERSONNEL

**Selected Reserve 65,508**

#### AFRC AIRCRAFT BY TYPE

A-10	55	C-5M	16
B-52H	18	F-16C	52
C-130H	42	F-16D	2
C-130J	10	HH-60G	16
C-17A	26	KC-135R	67
C-40	4	WC-130J	10

#### EQUIPMENT (TAI)

Bomber	18
Fighter/Attack	109
Helicopter	16
ISR/BM/C3	10
Tanker	67
Transport	98

MAJOR UNITS	LOCATION	AIRCRAFT/MISSION/WEAPON
94th Airlift Wing (AW)	Dobbins ARB, Ga.	C-130H
301st Fighter Wing (FW)	NAS JRB Fort Worth, Texas	F-16 (Texas)
302nd AW	Peterson AFB, Colo.	C-130H (including Modular Airborne Firefighting System)
307th Bomb Wing	Barksdale AFB, La.	B-52H
310th Space Wing	Schriever AFB, Colo.	Space control and operations and warning, information operations
315th AW (classic associate)	JB Charleston, S.C.	C-17
349th Air Mobility Wing (classic associate)	Travis AFB, Calif.	C-5, C-17, KC-10
403rd Wing	Keesler AFB, Miss.	C-130J, WC-130J
419th FW (classic associate)	Hill AFB, Utah	F-35A
433rd AW	JBSA-Lackland, Texas	C-5M, formal training unit
434th Air Refueling Wing (ARW)	Grissom ARB, Ind.	KC-135R
439th AW	Westover ARB, Mass.	C-5M
442nd FW	Whiteman AFB, Mo.	A-10C
445th AW	Wright-Patterson AFB, Ohio	C-17
446th AW (classic associate)	JB Lewis-McChord, Wash.	C-17
452nd AMW	March ARB, Calif.	C-17, KC-135R
459th ARW	JB Andrews, Md.	KC-135R
482nd FW	Homestead ARB, Fla.	F-16C
507th ARW	Tinker AFB, Okla.	KC-135R
512th AW (classic associate)	Dover AFB, Del.	C-5M, C-17
514th AMW (classic associate)	JB McGuire-Dix-Lakehurst, N.J.	C-17, KC-10
655th ISR Wing	Wright-Patterson AFB, Ohio	Intelligence
908th AW	Maxwell AFB, Ala.	C-130H
910th AW	Youngstown ARS, Ohio	C-130H
911th AW	Pittsburgh ARS, Pa.	Converting from C-130 to C-17
914th ARW	Niagara Falls ARS, N.Y.	KC-135R
916th ARW	Seymour Johnson AFB, N.C.	KC-135R, KC-46A
919th Special Operations Wing (classic associate)	Duke Field, Fla.	AC-130U, C-145A, C-146, C-208 MC-130H, MQ-9, PC-12, U-28
920th Rescue Wing	Patrick SFB, Fla.	HC-130K/J, HH-60G
926th Wing (classic associate)	Nellis AFB, Nev.	F-15C, F-15E, F-16, F-22A, F-35A, MQ-9 (Creech AFB, Nev.), RQ-4 (Beale AFB, Calif.)
927th ARW (classic associate)	MacDill AFB, Fla.	KC-135R
931st ARW (classic associate)	McConnell AFB, Kan.	KC-1355R, KC-46A
932nd AW	Scott AFB, Ill.	C-40C
934th AW	Minneapolis-St. Paul ARS, Minn.	C-130H
940th ARW	Beale AFB, Calif.	KC-135R
944th FW (classic and active associate)	Luke AFB, Ariz.	A-10 (active associate-Davis Monthan AFB, Ariz.) F-15E (Seymour Johnson AFB, N.C.), F-16 (Luke AFB and Holloman AFB, Ariz.), F-35A (Luke AFB and Eglin AFB, Fla.)
960th Cyberspace Wing	JBSA-Lackland, Texas	Cyberspace operations

Classic associate: Active-duty unit owns aircraft.

Source: TAI as of Sept. 30, 2020



# AFSOC



## Air Force Special Operations Command

**Headquarters:** Hurlburt Field, Fla.

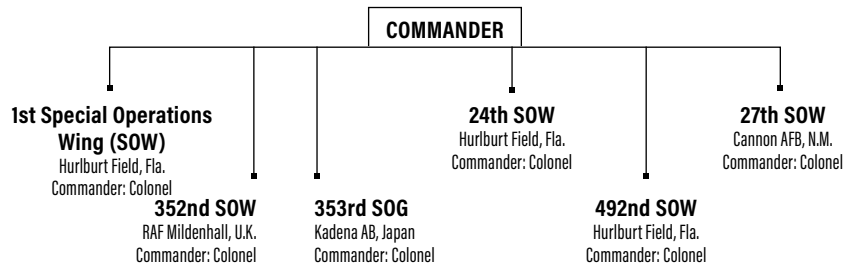
**Date of current designation:** May 22, 1990

**Commander:** Lt. Gen. James C. "Jim" Slife

### Primary Mission

Organize, train, equip, maintain, and provide special operations air power forces to combatant commanders.

### AFSOC Structure



#### AFSOC AIRCRAFT BY TYPE

AC-130J	20
AC-130U	7
AC-130W	10
C-130H	2
CV-22B	42
MC-130H	16
MC-130J	46
MQ-9A	51

#### PERSONNEL

Active Duty	15,660
-------------	--------

#### EQUIPMENT (TAI)

ISR/BM/C3	51
Special Operations Forces	141
Transport	2

Source: U.S. Air Force Total Aircraft Inventory (TAI) as of Sept. 30, 2020

MAJOR UNITS	LOCATION	AIRCRAFT/MISSION/WEAPON
1st Special Operations Group (SOG)	Hurlburt Field, Fla.	AC-130J/U, CV-22, MC-130H, MQ-9, U-28A
27th SOG	Cannon AFB, N.M.	AC-130W, C-146A*, CV-22B, MC-130J, MQ-9, U-28A
551st SOS	Cannon AFB, N.M.	AC-130H/W, CV-22, MC-130J, MQ-9
720th Special Tactics Group (STG)	Hurlburt Field, Fla.	Special tactics operations
724th STG	Pope Field, N.C.	Special tactics operations
752nd SOG	RAF Mildenhall, U.K.	CV-22, MC-130J

\*Owned by U.S. Special Operations Command



Staff Sgt. Brandon Nelson/USA

Special Tactics Controllers from the 321st Special Tactics Squadron conduct day and night iterations of fast rope and repelling out the back of a CV-22 from the 7th Special Operations Squadron on April 12 and April 15, 2021. These skills are critical to maintaining mission readiness and maintain the ability to meet today's SOF challenges in a real world environment.

# AMC



## Air Mobility Command

**Headquarters:** Scott AFB, Ill.

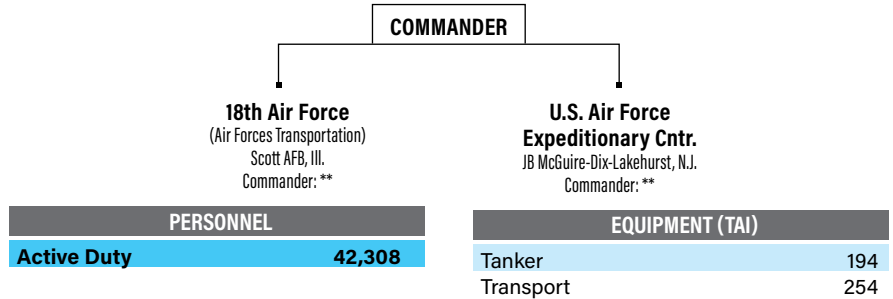
**Date of current designation:** June 1, 1992

**Commander:** Gen. Jacqueline D. Van Ovost

### Primary Mission

Organize, train, equip, maintain, and provide air mobility forces to sustain worldwide air power operations.

### AMC Structure



MAJOR UNITS	LOCATION	AIRCRAFT/MISSION/WEAPON
6th Air Refueling Wing (ARW)	MacDill AFB, Fla.	C-37, KC-135R
19th Airlift Wing (AW)	Little Rock AFB, Ark.	C-130H/J
22nd ARW	McConnell AFB, Kan.	KC-135R
60th Air Mobility Wing (AMW)	Travis AFB, Calif.	C-5, C-17, KC-10
62nd AW	JB Lewis-McChord, Wash.	C-17
87th Air Base Wing (ABW)	JB McGuire-Dix-Lakehurst, N.J.	Joint base facilities support
89th AW	JB Andrews, Md.	C-20B, C-32A, C-37A/B, C-40B, VC-25A
92nd ARW	Fairchild AFB, Wash.	KC-135R
305th AMW	JB McGuire-Dix-Lakehurst, N.J.	C-17, KC-10
317th AW	Dyess AFB, Texas	C-130J
375th AMW	Scott AFB, Ill.	C-21, C-40 (AA), KC-135R (AA), NC-21
436th AW	Dover AFB, Del.	C-5, C-17
437th AW	JB Charleston, S.C.	C-17A
515th Air Mobility Operations Wing (AMOW)	JB Pearl Harbor-Hickam, Hawaii	Contingency airfield operations
521st AMOW	Ramstein AB, Germany	Contingency airfield operations
618th Air Operations Center	Scott AFB, Ill.	Tanker Airlift Control Center operations
621st Contingency Response Wing	JB McGuire-Dix-Lakehurst, N.J.	Rapidly deployable bare-base operations
628th ABW	JB Charleston, S.C.	Joint base facilities support

AMC AIRCRAFT BY TYPE	
C-130J	64
C-17A	120
C-21A	14
C-32A	4
C-37A	5
C-37B	5
C-40A	4
C-5M	36
KC-10A	56
KC-135R	115
KC-135T	23
VC-25A	2

Source: U.S. Air Force Total Aircraft Inventory (TAI) as of Sept. 30, 2020



Airman 1st Class Stephani Barge

The sun sets over a C-17 Globemaster III aircraft on the flight line at Dover Air Force Base, Del., March 30. The 436th Airlift Wing owns, maintains and operates C-5M Super Galaxy and C-17 Globemaster III aircraft with a mission to provide rapid global airlift, combat ready Airmen, and installation support.

# PACAF



## Pacific Air Forces

**Headquarters:** JB Pearl Harbor-Hickam, Hawaii

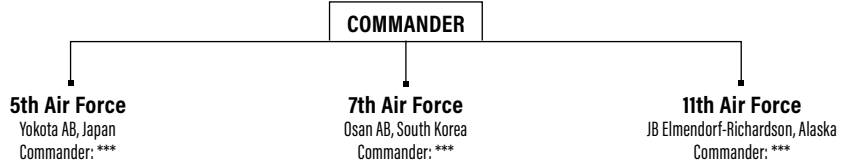
**Date of current designation:** July 1, 1957

**Commander:** Gen. Kenneth S. Wilsbach

### Primary Mission

Provide U.S. Pacific Command integrated expeditionary Air Force capabilities, including strike, air mobility, and rescue forces.

### PACAF Structure



PERSONNEL		EQUIPMENT (TAI)	
<b>Active Duty</b>	<b>29,952</b>	Fighter/Attack	257
		Helicopter	13
		ISR/BM/C3	4
		Tanker	15
		Transport	30

MAJOR UNITS	LOCATION	AIRCRAFT/MISSION/WEAPON
3rd Wing	JB Elmendorf-Richardson, Alaska	C-12, C-17, E-3, F-22A
8th Fighter Wing (FW)	Kunsan AB, South Korea	F-16C/D
15th Wing	JB Pearl Harbor-Hickam, Hawaii	C-17A, C-37A, C-40B, F-22A (AA), KC-135R (AA)
18th Wing	Kadena AB, Japan	E-3B/C, F-15C/D, HH-60G, KC-135R
35th FW	Misawa AB, Japan	F-16C/D
36th Wing	Andersen AFB, Guam	Operational platform for rotating combat forces
51st FW	Osan AB, South Korea	A-10C, F-16C/D
354th FW	Eielson AFB, Alaska	F-16C/D
374th Airlift Wing	Yokota AB, Japan	C-12J, C-130H, UH-1N
607th Air Operations Center (AOC)	Osan AB, South Korea	Plan and direct air operations
611th AOC	JB Elmendorf-Richardson, Alaska	Plan and direct air operations
613th AOC	JB Pearl Harbor-Hickam, Hawaii	Plan and direct air operations
673rd Air Base Wing	JB Elmendorf-Richardson, Alaska	Joint base facilities support
Regional Support Center	JB Elmendorf-Richardson, Alaska	Remote facility operations, communications, engineering

PACAF AIRCRAFT BY TYPE					
A-10C	24	E-3B	3	F-22A	47
C-12F	2	E-3C	1	HH-60G	9
C-12J	3	F-15C	49	KC-135R	10
C-130J	14	F-15D	4	KC-135T	5
C-17A	9	F-16C	121	UH-1	4
C-37A	2	F-16D	12		

Source: U.S. Air Force Total Aircraft Inventory (TAI) as of Sept. 30, 2020



Senior Airman Branden Rae

A U-2 Dragon Lady assigned to 5th Reconnaissance Squadron descends to land at Osan Air Base, South Korea, March 12. While driving the chase cars, U-2 pilots aid the pilot flying the Dragon Lady by radioing altitude and runway alignments during take offs and landings.



# USAFE-AFA



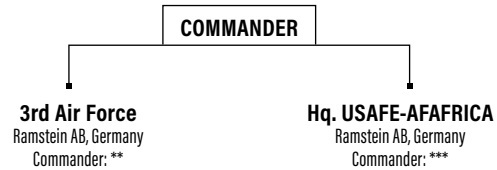
## U.S. Air Forces in Europe - Air Forces Africa

**Headquarters:** Ramstein AB, Germany  
**Date of current designation:** April 20, 2012  
**Commander:** Gen. Jeffrey L. Harrigan

### Primary Mission

Serves as the air component for U.S. European Command and U.S. Africa Command, directing air operations, including warfighting and humanitarian/peacekeeping actions, and maintains combat-ready forces for NATO responsibilities.

### USAFE-AFA Structure



PERSONNEL	
Active Duty	23,081

EQUIPMENT (TAI)	
Fighter/Attack	155
Helicopter	5
Tanker	15
Transport	22

MAJOR UNITS	LOCATION	AIRCRAFT/MISSION/WEAPON
31st Fighter Wing (FW)	Aviano AB, Italy	F-16C/D, HH-60G
39th Air Base Wing	Incirlik AB, Turkey	Operational location for deployed U.S. and NATO forces
48th FW	RAF Lakenheath, U.K.	F-15C/D, F-15E, HH-60G
52nd FW	Spangdahlem AB, Germany	F-16J
86th Airlift Wing	Ramstein AB, Germany	C-21A, C-37A, C-130J
100th Air Refueling Wing	RAF Mildenhall, U.K.	CV-22, KC-135R/T, MC-130J, RC-135V/W
435th Air Ground Operations Wing	Ramstein AB, Germany	Battlefield airmen support and operations
501st Combat Support Wing	RAF Alconbury, U.K.	Facilitates support for seven geographically separated units
603rd Air Operations Center	Ramstein AB, Germany	Plan and direct air operations

USAFE-AFA AIRCRAFT BY TYPE					
C-130J	14	F-15D	2	HH-60G	5
C-21A	5	F-15E	55	KC-135R	14
C-37A	3	F-16C	75	KC-135T	1
F-15C	19	F-16D	4		

Source: U.S. Air Force Total Aircraft Inventory (TAI) as of Sept. 30, 2020

**U.S. Air Force Staff Sgt. Cornelius Ijezie, a 52nd Maintenance Squadron Munitions Stockpile Supervisor, inspects a munition on a U.S. Air Force F-16 Fighting Falcon, while in Mission Oriented Protective Posture gear during an ACE exercise at Ramstein AB, Germany, March 25. ACE, is Agile Combat Employment, an operational concept that allows forces to generate sorties from various locations with the support of multi-capable Airmen.**



Tech Sgt. Warren Spearman Jr.

# ANG



## Air National Guard

**Headquarters:** Washington, D.C.  
**Date of current designation:** Sept. 18, 1947  
**Director:** Lt. Gen. Michael A. Loh

### Primary Mission

Provide combat capability to the Active-duty force and security for the homeland. Support U.S. domestic and foreign humanitarian and disaster relief.

#### PERSONNEL

**Selected Reserve** **107,414**

#### EQUIPMENT (TAI)

Fighter/Attack	594	Tanker	139
Helicopter	23	Transport	219
ISR/BM/C3	59		

WING (STATE)	SYSTEM/MISSION
101st Air Refueling Wing (Maine)	KC-135R, CC
102nd Intelligence Wing (Mass.)	DCGS, cyber, ISR, EISG, WXF
103rd Airlift Wing (Conn.)	C-130H
104th Fighter Wing (Mass.)	F-15C/D
105th AW (N.Y.)	C-17, EIS, WXF
106th Rescue Wing (N.Y.)	HC-130, HH-60G, GA
107th ATKW (N.Y.)	MQ-9
108th Wing (N.J.)	KC-135R, C-32B, intel, SOS
109th AW (N.Y.)	LC-130
110th Wing (Mich.)	MQ-9, AOG, C2, cyber
111th Attack Wing (Pa.)	MQ-9, cyber, EIS
113th Wing (D.C.)	C-40C, F-16C/D, WXF
114th FW (S.D.)	F-16C/D
115th FW (Wis.)	F-16C/D, RC-26B, WXF
116th Air Control Wing (Ga.)	E-8C, WXF
117th ARW (Ala.)	KC-135R, DCGS
118th Wing (Tenn.)	MQ-9, cyber
119th Wing (N.D.)	MQ-9, ISR, WXF
120th AW (Mont.)	C-130H, WXF
121st ARW (Ohio)	KC-135R, WXF
122nd FW (Ind.)	A-10C
123rd AW (Ky.)	C-130H, CRG, special tactics, WXF, intel
124th FW (Idaho)	A-10C, TACP, cyber
125th FW (Fla.)	F-15C/D, WXF
126th ARW (Ill.)	KC-135R, SCMS
127th Wing (Mich.)	A-10C, KC-135T, WXF
128th ARW (Wis.)	KC-135R
129th RQW (Calif.)	HC-130J, HH-60G, GA
130th AW (W.Va.)	C-130H, RC-26B
131st Bomb Wing (Mo.)	B-2 (CA*)
132nd Wing (Iowa)	MQ-9, cyber, ISR
133rd AW (Minn.)	C-130H, ALCF, WXF
134th ARW (Tenn.)	KC-135R
136th AW (Texas)	C-130H, ALCF, WXF
137th SOW (Okla.)	MC-12, EIS, SOS, TACP
138th FW (Okla.)	F-16C/D, EIS, WXF
139th AW (Mo.)	C-130H, AATTC (ANG/AFRC), ATCS
140th Wing (Colo.)	F-16C/D, CEF, WXF
141st ARW (Wash.)	KC-135R, CC, RC-26B, intel
142nd FW (Ore.)	F-15C/D, special tactics, WXF
143rd AW (R.I.)	C-130J, cyber
144th FW (Calif.)	F-15C/D, WXF
145th AW (N.C.)	C-17, CEF, MAFFS
146th AW (Calif.)	C-130J, ALCF, MAFFS, WXF
147th AW (Texas)	MQ-9, RC-26, TACP, EIS, WXF

WING (STATE)	SYSTEM/MISSION
148th FW (Minn.)	F-16C/D
149th FW (Texas)	F-16C/D
150th SOW (N.M.)	Special ops training (CA*), RC-26B
151st ARW (Utah)	KC-135R
152nd AW (Nev.)	C-130H, DCGS
153rd AW (Wyo.)	C-130H, MAFFS
154th Wing (Hawaii)	C-17 (CA*), F-22, KC-135R, intel, WXF
155th ARW (Neb.)	KC-135R
156th AW (Puerto Rico)	WC-130H
157th ARW (N.H.)	KC-135R, KC-46A
158th FW (Vt.)	F-16C, F-35A, WXF
159th FW (La.)	F-15C/D, CC
161st ARW (Ariz.)	KC-135R
162nd Wing (Ariz.)	F-16, RC-26B, WXF
163rd Attack Wing (Calif.)	MQ-9, FTU, WXF
164th AW (Tenn.)	C-17A
165th AW (Ga.)	C-130H, CRTS, AOS
166th AW (Del.)	C-130H, cyber
167th AW (W.Va.)	C-17A
168th Wing (Alaska)	KC-135R
169th FW (S.C.)	F-16C/D, ATCS
171st ARW (Pa.)	KC-135R/T, WXF
172nd AW (Miss.)	C-17, ALCF
173rd FW (Ore.)	F-15C/D, FTU, ATCS
174th Attack Wing (N.Y.)	MQ-9, RC-26B, AOC, FTU,
175th Wing (Md.)	A-10C, CEF, cyber, intel
176th Wing (Alaska)	C-17 (CA*), HC-130J, HH-60G, GA, RAOC
177th FW (N.J.)	F-16C, AOS, WXF
178th Wing (Ohio)	MQ-9, cyber, ISR, MCE
179th AW (Ohio)	C-130H
180th FW (Ohio)	F-16C/D
181st IW (Ind.)	DCGS, ISR, TACP, WXF
182nd AW (Ill.)	C-130H, CC, TACP
183rd Wing (Ill.)	CRF, DCGS
184th IW (Kan.)	CACS, cyber, DCGS, ISR, NOSS, TACP
185th ARW (Iowa)	KC-135R
186th ARW (Miss.)	KC-135R, RC-26B, AOG, ATCS
187th FW (Ala.)	F-16C/D, RC-26B
188th Wing (Ark.)	MQ-9, MCE, ISR, DCGS
189th AW (Ark.)	C-130H, intel, FTU, WXF
190th ARW (Kan.)	KC-135R, CW
192nd Wing (Va.)	F-22 (CA*), cyber, DCGS
193rd SOW (Pa.)	EC-130J, AOS, CC, cyber, TACP
194th Wing (Wash.)	CC, CW
195th Wing (Calif.)	DCGS, intel

\*Classic associate