

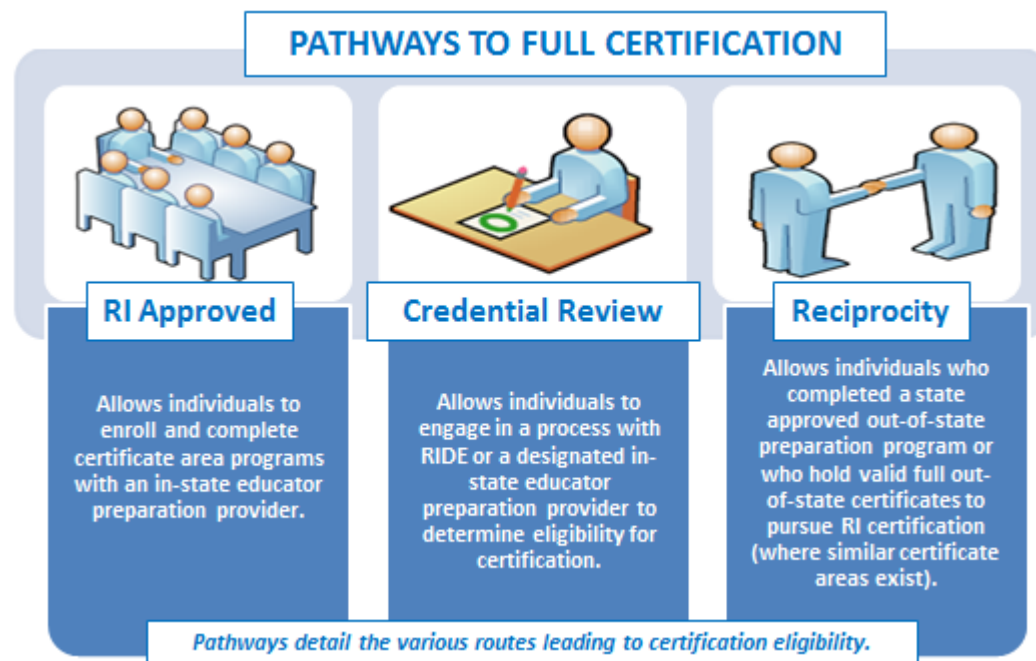


## Requirements for Full Certification- Elementary Grades

Applicants must satisfy all requirements in the following table for the certificate area(s) they are seeking.<sup>1</sup> The table includes details for each certificate area including the specific area, valid assignment details, available pathways, specific criteria, and required assessment(s). All full teacher certificate areas require the applicant to hold a Bachelor’s degree from a regionally accredited institution.

Educators must submit all documentation listed within the requirements with [application materials](#). Demonstration of completion of a certification pathway as well as demonstration of meeting all other requirements is necessary for certification.

*Note: Applicants prepared in a program where the language of instruction was not English must achieve a passing score of 64 on the Versant Pro Speaking and Writing English assessments. Additionally, dependent certificate areas are noted with an asterisk and specify the prerequisite certificate (within the criteria).*



## Certificate Areas

Elementary Education Teacher .....	2
Elementary Special Education Teacher* .....	3
Elementary Bilingual and Dual Language Education Teacher* .....	4
Elementary English to Speakers of Other Languages (ESOL) Teacher* .....	5

<sup>1</sup> RI full certification demonstrates that an educator has met all RI certification requirements. RI full certification types include Initial, Professional, and Advanced certificates (all of which are multi-year certificates). RI full certification is comparable to National Association of State Directors of Teacher Education and Certification (NASDTEC) stage three or higher certificates and is recognized by other states for certificate reciprocity. RI full certification does not include preliminary certificates. Individuals pursuing their first full certificate should apply for their Initial certificate.



## Requirements for Full Certification- Elementary Grades

CERTIFICATE & ASSIGNMENT	PATHWAY & CRITERIA	ASSESSMENT
<p><b>Elementary Education Teacher (11201)</b></p> <p><i>Valid for assignment as an Elementary Education teacher in grades 1-6 in RI public schools</i></p>	<p><b><u>PATHWAYS:</u></b></p> <ul style="list-style-type: none"> <li>RI Approved Program, Credential Review: CRCI, and Reciprocity</li> </ul> <p><b><u>CRITERIA:</u></b></p> <ul style="list-style-type: none"> <li>Completion of a minimum of 12 weeks of student teaching in this area and a minimum of 60 hours field experience prior to student teaching</li> <li>Demonstration of meeting content and pedagogical competencies as prescribed by appropriate RIDE-approved national professional association</li> <li>Demonstration of deep understanding of applicable student standards and proficiency in designing and implementing standards-based instruction and assessment</li> </ul>	<p><b>Go to <a href="http://www.ets.org">www.ets.org</a> for test registration, date, and locations</b></p> <p>Principles of Learning and Teaching Grades K-6 (5622) with a score of 160;  <b>AND</b>            Elementary Multiple Subjects Test (5001) which includes all subtests:            Reading and Language Arts Subtest (5002) with a score of 157;            Mathematics Subtest (5003) with a score of 157;            Social Science Subtest (5004) with a score of 155;            Science Subtest (5005) with a score of 159</p>



## Requirements for Full Certification- Elementary Grades

CERTIFICATE & ASSIGNMENT	PATHWAY & CRITERIA	ASSESSMENT
<p><b>Elementary Special Education Teacher* (11281)</b></p> <p><i>Valid for assignment as an Elementary Special Education Teacher in grades 1-6 in RI public schools</i></p>	<p><b><u>PATHWAYS:</u></b></p> <ul style="list-style-type: none"> <li>▪ RI Approved Program, Credential Review: CRCL, and Reciprocity</li> </ul> <p><b><u>CERTIFICATE:</u></b> Hold an Elementary Education Teacher (11201) or any All Grades certificate</p> <p><b><u>CRITERIA:</u></b></p> <ul style="list-style-type: none"> <li>▪ Completion of 12 weeks of student teaching in this area and a minimum of 60 hours of field experience prior to student teaching</li> <li>▪ Demonstration of meeting content and pedagogical competencies as prescribed by appropriate RIDE-approved national professional association</li> <li>▪ Demonstration of deep understanding of applicable student standards and proficiency in designing and implementing standards-based instruction and assessment</li> </ul>	<p><b>Go to <a href="http://www.ets.org">www.ets.org</a> for test registration, date, and locations</b></p> <p>Special Education: Core Knowledge and Mild to Moderate Applications (5543) with a score of 164</p>



## Requirements for Full Certification- Elementary Grades

CERTIFICATE & ASSIGNMENT	PATHWAY & CRITERIA	ASSESSMENT
<p><b>Elementary Bilingual and Dual Language Education Teacher* (11291)</b> <i>Language specific</i></p> <p><i>Valid for assignment as an Elementary Bilingual and Dual Language Education teacher in grades 1 - 6 in RI public schools</i></p>	<p><b>PATHWAYS:</b></p> <ul style="list-style-type: none"> <li>Credential Review: CRCI and Reciprocity</li> </ul> <p><b>CERTIFICATE:</b> Hold Elementary Education Teacher (11201)</p> <p><b>CRITERIA:</b></p> <ul style="list-style-type: none"> <li>Completion of a minimum of 45 hours of practicum</li> <li>Demonstration of meeting content and pedagogical competencies as prescribed by appropriate RIDE-approved national professional association</li> <li>Demonstration of deep understanding of applicable student standards and proficiency in designing and implementing standards-based instruction and assessment</li> <li>Demonstration of proficiency in the second language of instruction through applicable language test</li> </ul> <p><b>NOTE:</b> Educators who hold a valid Bilingual and Dual Language certificate are eligible for an English to Speakers of Other Languages certificate</p>	<p>Go to <a href="http://www.ets.org">www.ets.org</a> for test registration, date, and locations</p> <p>English to Speakers of Other Languages (5362) with a score of 155</p> <p><b>AND APPLICABLE LANGUAGE TEST</b></p> <p>American Sign Language Proficiency Interview (0634) with a score of 170;</p> <p>Chinese(Mandarin) World Language (5665) with a score of 164;</p> <p>French World Language (5174) with a score of 162;</p> <p>German World Language (5183) with a score of 163;</p> <p>Latin World Language (5601) with a score of 161;</p> <p>Spanish World Language (5195) with a score of 168</p> <p>For all other languages: Oral Proficiency Interview (OPI) with a score of Advanced Low</p>



## Requirements for Full Certification- Elementary Grades

CERTIFICATE & ASSIGNMENT	PATHWAY & CRITERIA	ASSESSMENT
<p><b>Elementary English to Speakers of Other Languages Teacher* (11292)</b></p> <p><i>Valid for assignment as an Elementary English as a Second Language Education teacher in grades 1 - 6 in RI public schools</i></p>	<p><b><u>PATHWAYS:</u></b></p> <ul style="list-style-type: none"> <li>▪ Credential Review: CRCI and Reciprocity</li> </ul> <p><b><u>CERTIFICATE:</u></b> Hold Elementary Education Teacher (11201)</p> <p><b><u>CRITERIA:</u></b></p> <ul style="list-style-type: none"> <li>▪ Completion of 45 hours of practicum</li> <li>▪ Demonstration of meeting content and pedagogical competencies as prescribed by appropriate RIDE-approved national professional association</li> <li>▪ Demonstration of deep understanding of applicable student standards and proficiency in designing and implementing standards-based instruction and assessment</li> </ul> <p><b><u>NOTE:</u></b> Educators who hold a valid English to Speakers of Other Languages certificate may teach in English in dual language programs</p>	<p><b>Go to <a href="http://www.ets.org">www.ets.org</a> for test registration, date, and locations</b></p> <p>English to Speakers of Other Languages (5362) with a score of 155</p>