

# Wyoming

AGRICULTURAL

STATISTICS

2016



# WYOMING AGRICULTURAL STATISTICS 2016

*Compiled by the:*  
United States Department of Agriculture  
National Agricultural Statistics Service  
Mountain Region, Wyoming Field Office

Rhonda Brandt, State Statistician  
Nancy Hussey, Survey Coordinator

**Mailing Address:** P.O. Box 1148, Cheyenne, WY 82003-1148  
**Street Address:** 308 West 21<sup>st</sup> Street, Cheyenne, WY 82001

**Telephone:** (307) 432-5600 or (800) 892-1660  
**FAX:** (866) 314-4029

**Internet:** <http://www.nass.usda.gov/wy/>  
**Email:** [nassrfomtr@nass.usda.gov](mailto:nassrfomtr@nass.usda.gov)



U.S. Department of Agriculture  
National Agricultural Statistics Service

Hubert Hamer, Administrator





United States Department of Agriculture  
National Agricultural Statistics Service  
Wyoming Field Office



Cooperating with the Wyoming Business Council,  
the University of Wyoming Agricultural Experiment Station,  
and the Wyoming Department of Agriculture

Dear Farmers, Ranchers, and Others Interested in Wyoming Agriculture,

I am proud to present the "2016 Wyoming Agricultural Statistics" annual bulletin online.

I would like to thank all of the farmers, ranchers, agribusinesses, state and federal agricultural staff, and others in the Wyoming agricultural industry for their efforts and contributions to this publication. Whether you provided, collected, analyzed, or compiled this data, your efforts produce the best estimates of Wyoming agriculture possible.

Highlighted in the bulletin this year are the Wyoming sugarbeet growers. The front and back covers as well as the Crops title page show a family harvesting sugarbeets near Powell, Wyoming. Wyoming farmers have set record sugarbeet yields seven of the last eight years. Well done!

This book is a compilation of the Wyoming data included in over 500 reports published each year by the National Agricultural Statistics Service (NASS). A calendar showing the report release dates can be found in the back of this publication and on the NASS website at: <http://www.nass.usda.gov/Publications/index.asp>

Wyoming farmers, ranchers, and agribusinesses voluntarily provide their individual information which is then summarized to the National, State, and County level. In addition to the information in this bulletin, a vast amount of detailed State and County information, both historic and current, about Wyoming agriculture is available from the multitude of annual reports we publish and the Census of Agriculture. For more information, please visit our website at: <http://www.nass.usda.gov>

Inside the back cover is the Wyoming Cropland Data Layer for 2015 generated from our CropScape tool. This is a free, interactive tool that allows users to generate the acres of land within in any geographic boundary. The map also shows the Agricultural Statistics District boundaries used for district and county estimates. A similar online tool called VegScape will show the vegetative index in any region with comparisons to previous years. I encourage all who work with the land in Wyoming to explore these two valuable tools.

Sincerely,

Rhonda Brandt  
State Statistician

P. O. Box 1148 · Cheyenne, Wyoming 82003  
(307) 432-5600 · (307) 432-5598 FAX · [www.nass.usda.gov](http://www.nass.usda.gov)  
USDA is an equal opportunity provider and employer.

## Table of Contents

Wyoming Agriculture Overview.....	6
Rank & Quantity Produced, Selected Commodities – Wyoming, Leading State, & United States: 2015.....	6
<b>Wyoming Record Highs &amp; Lows</b>	
Record Highs & Lows: Acreage, Yield & Production of Crops – Wyoming.....	7
Record Highs & Lows: Livestock, Poultry, Honey – Wyoming.....	8
<b>Land, Economics, &amp; Demographics</b>	
Number of Farms, Land in Farms, & Average Farm Size – Wyoming & United States: 2006-2015 .....	9
Number of Farms by Economic Sales Class – Wyoming: 2006-2015 .....	9
Farms: Acres by Economic Sales Class – Wyoming: 2006-2015.....	9
Number of Farms & Land in Farms (Chart).....	10
Number of Farms by Economic Sales (Chart) .....	10
Farm Labor: Number Hired, Wage Rates, & Hours Worked – Mountain I Region: July 2015, October 2015, January 2016, & April 2016 .....	10
Grazing Fees: Annual Average Rates – Wyoming: 2006-2015 .....	10
Farm Sector Indicators – Wyoming: 2010-2015.....	11
Farm Income: Cash Receipts by Commodity – Wyoming: 2010-2015 .....	12
Agricultural Exports: Estimated Value – Wyoming: 2010-2015 .....	13
<b>Crops</b>	
Barley: Area Planted & Harvested, Yield, Production, Price, & Value – Wyoming: 2006-2015.....	15
Corn for Grain: Area Planted & Harvested, Yield, Production, Price, & Value – Wyoming: 2006-2015 .....	15
Corn for Silage: Area Harvested, Yield, & Production – Wyoming: 2006-2015 .....	15
Corn: Area Planted / Harvested (Chart) .....	16
Dry Edible Beans: Area Planted & Harvested, Yield, Production, Price, & Value – Wyoming: 2006-2015 .....	16
All Hay: Area Harvested, Yield, Production, Price, & Value – Wyoming: 2006-2015 .....	17
Alfalfa Hay: Area Harvested, Yield, Production, Price, & Value – Wyoming: 2006-2015 .....	17
Other Hay: Area Harvested, Yield, Production, Price, & Value – Wyoming: 2006-2015 .....	17
Alfalfa: Production and Price (Chart).....	18
Hay: Production (Chart).....	18
Oats: Area Planted & Harvested, Yield, Production, Price, & Value – Wyoming: 2006-2015 .....	19
Sugarbeets: Area Planted & Harvested, Yield, Production, Price, & Value – Wyoming: 2006-2015 .....	19
Winter Wheat: Area Planted & Harvested, Yield, Production, Price, & Value – Wyoming: 2006-2015 .....	19
Crop Stocks by Quarter – Wyoming: 2010-2015 .....	20
Hay Stocks: Position & Month – Wyoming: 2006-2015.....	20
Grain Storage: Capacity by Position & Off-Farm Facilities – Wyoming: December 1, 2010-2015 .....	21
<b>Livestock</b>	
<b>Cattle &amp; Calves</b>	
Cattle & Calves: Number by Class & Calf Crop – Wyoming: January 1, 2012-2016.....	23
Cattle & Calves (Chart) .....	23
Cattle & Calves: Production, Marketings & Income – Wyoming: 2011-2015.....	24
Cattle & Calves: Balance Sheet – Wyoming: 2011-2015.....	24
Commercial Cattle Slaughter – Wyoming: Monthly 2014-2015 .....	24

## Table of Contents (Continued)

### Dairy

Dairy: Milk Production & Milkfat – Wyoming: 2011-2015.....	25
Milk & Cream: Marketings, Used on Farm, Income, & Value – Wyoming: 2011-2015.....	25
Honey: Number of Colonies, Yield, Production, Stocks, Price, & Value – Wyoming: 2006-2015 .....	25

### Hogs & Pigs

Hogs & Pigs: Inventory Total & by Weight Group, Farrowings & Pig Crop – Wyoming: December 1, 2011-2015 .....	26
Hogs & Pigs: Production, Marketings & Income – Wyoming: 2011-2015.....	26
Hogs & Pigs: Balance Sheet – Wyoming: 2011-2015 .....	26
Commercial Hog Slaughter – Wyoming: Monthly 2014-2015.....	27

### Sheep and Lambs

Sheep & Lambs: Inventory by Class & Lamb Crop – Wyoming: January 1, 2012-2016 .....	27
Sheep & Lambs: Inventory by Class – Wyoming: January 1, 2007-2016 .....	28
Wool: Production & Value – Wyoming: 2011-2015.....	28
Market Sheep & Lambs: Inventory by Weight Group – Wyoming: January 1, 2007-2016 .....	28
Sheep & Lambs: Lamb Crop, Farm Slaughter & Death Loss – Wyoming: 2007-2016.....	29
Commercial Sheep & Lamb Slaughter - Wyoming: Monthly 2014-2015 .....	29
Losses of Lambs Before Docking, by Cause – Wyoming: 2010-2015.....	30
Loss of Lambs After Docking, by Cause – Wyoming: 2010-2015 .....	30
Loss of Lambs Combined, by Cause – Wyoming: 2010-2015.....	31
Losses of Sheep, by Cause – Wyoming: 2010-2015.....	32
Losses of All Lambs, by Cause – Wyoming: 2010-2015 .....	33
Losses of all Sheep & Lambs, by District, by Cause – Wyoming: 2015 .....	34

### County Estimates

County Estimates: Barley – Wyoming: 2014 & 2015 .....	36
County Estimates: Corn for Grain – Wyoming: 2014 & 2015 .....	36
County Estimates: Winter Wheat, All Cropping Practices – Wyoming: 2014 & 2015.....	37
County Estimates: Sugar Beets – Wyoming: 2014 & 2015 .....	37
County Estimates: Alfalfa & Alfalfa Mixtures for Hay, All Cropping Practices – Wyoming: 2014 & 2015.....	38
County Estimates: Other Hay, All Cropping Practices – Wyoming: 2014 & 2015 .....	39
County Estimates: Dry Edible Beans, All Varieties – Wyoming: 2014 & 2015 .....	40
County Estimates: Cattle – Wyoming: January 1, 2015-2016 .....	41
County Estimates: Sheep – Wyoming: January 1, 2015 & 2016 .....	42
County Estimates: Cash Rent Per Acre – Wyoming: 2014 & 2016 .....	43

### Crop Progress & Condition

Crop Progress & Condition: Barley – Wyoming: 2014 & 2015 .....	45
Crop Progress & Condition: Sugar Beets – Wyoming: 2014 & 2015.....	45
Crop Progress & Condition: Corn – Wyoming: 2014 & 2015.....	46
Crop Progress & Condition: Oats – Wyoming: 2014 & 2015.....	46
Crop Progress & Condition: Pasture & Range – Wyoming: 2011 & 2015.....	47
Crop Progress & Condition: Spring Wheat – Wyoming: 2014 & 2015.....	47
Crop Progress & Condition: Winter Wheat – Wyoming: 2014 & 2015.....	48

NASS Reports & Data.....	49
Approximate Data Release Dates.....	50
2015 Wyoming Cropland Data Layer.....	51
Learn More .....	52

## WYOMING AGRICULTURE 2016

The value added to Wyoming's economy by the agricultural sector was \$2.043 billion in 2015 and has been above the \$2 billion threshold since 2013. Of that total, animals and animal products accounted for \$1.396 billion, crops totaled \$355 million, and farm-related income accounted for \$292 million.

In 2015, 11,600 farms and ranches used 30.4 million acres to raise agricultural products in Wyoming. Farmer and rancher cash receipts totaled \$1.71 billion. Cattle and calves ranked as the largest livestock commodity raised in the state, followed by hogs and sheep. Hay was the largest crop raised, followed by sugarbeets and barley.

### Rank & Quantity Produced, Selected Commodities – Wyoming, Leading State, & United States: 2015

Commodity	Unit	Wyoming		Leading State		United States
		Rank	Production	State	Production	
<b>Field Crops</b>						
Barley.....	(1,000 Bu)	6	8,170	North Dakota	67,200	218,333
Beans, Dry Edible, All .....	(1,000 Cwt)	9	713	North Dakota	8,901	30,121
Pinto Beans.....	(1,000 Cwt)	4	542	North Dakota	4,932	9,551
Other Dry Beans .....	(1,000 Cwt)	2	171	Minnesota	310	1,427
Corn, Grain .....	(1,000 Bu)	34	9,381	Iowa	2,505,600	13,601,198
Corn, Silage .....	(1,000 Tons)	32	575	Wisconsin	18,915	126,894
Hay, All.....	(1,000 Tons)	26	2,315	Texas	9,720	134,388
Hay, Alfalfa.....	(1,000 Tons)	17	1,325	California	5,451	58,974
Hay, Other.....	(1,000 Tons)	25	990	Texas	9,200	75,414
Oats .....	(1,000 Bu)	23	720	Wisconsin	14,040	89,535
Sugarbeets.....	(1,000 Tons)	9	939	Minnesota	12,180	35,359
Wheat, Winter .....	(1,000 Bu)	36	4,160	North Dakota	370,023	2,061,939
<b>Livestock <sup>1</sup></b>						
All Cattle & Calves .....	(1,000 Head)	24	1,310	Texas	11,700	91,988
All Cows <sup>2</sup> .....	(1,000 Head)	22	710	Texas	4,750	39,646
Calf Crop.....	(1,000 Head)	19	670	Texas	4,050	34,302
Beef Cows <sup>2</sup> .....	(1,000 Head)	15	704	Texas	4,290	30,331
Milk Cows <sup>2</sup> .....	(1,000 Head)	46	6	California	1,775	9,315
Milk Production .....	(Mil Lbs)	43	135	California	40,898	208,633
Cattle on Feed <sup>3</sup> .....	(1,000 Head)	21	70	Nebraska	2,520	13,177
All Hogs & Pigs .....	(1,000 Head)	29	96	Iowa	20,900	68,919
Breeding Hogs & Pigs .....	(1,000 Head)	21	33	Iowa	1,030	6,002
Pig Crop <sup>4</sup> .....	(1,000 Head)	21	683	Iowa	22,042	121,411
Market Hogs & Pigs .....	(1,000 Head)	31	63	Iowa	19,870	62,917
Honey Production .....	(1,000 Lbs)	17	2,318	North Dakota	42,140	178,270
All Sheep & Lambs .....	(1,000 Head)	4	355	Texas	735	5,320
Breeding Sheep & Lambs ..	(1,000 Lambs)	3	265	Texas	590	3,965
Lamb Crop .....	(1,000 Head)	2	235	Texas	350	3,440
Market Sheep & Lambs.....	(1,000 Head)	4	90	California	255	1,355
Wool Production.....	(1,000 Lbs)	2	2,480	California	2,850	27,050
<b>Miscellaneous</b>						
Farms.....	(Number)	39	11,600	Texas	242,000	2,067,000
Land in Farms .....	(1,000 Acres)	11	30,400	Texas	130,000	912,000
Average Size of Farm .....	(Acres)	1	2,621	Wyoming	2,621	441

<sup>1</sup> Inventory January 1, 2016 for cattle & sheep; December 1, 2015 for hogs & chickens.

<sup>2</sup> Cows & heifers that have calved.

<sup>3</sup> Feedlots greater than 1,000 head.

<sup>4</sup> Pig crop for the marketing year December 1, 2014-November 30, 2015.



## Record Highs & Lows: Acreage, Yield & Production of Crops – Wyoming

Units	Record High		Record Low		Record Began
	(Quantity)	(Year)	(Quantity)	(Year)	(Year)
<b>Corn for Grain</b>					
Harvested ..... (1,000 Acres)	140	1935	2	1889,1890,1891	1889
Yield..... (Bushels/Acre)	159.0	2015	6.0	1910	1889
Production .. (1,000 Bushels)	9,381	2015	34	1890	1889
<b>Corn for Silage</b>					
Harvested ..... (1,000 Acres)	56	1985	1	1919,1926	1919
Yield..... (Tons/Acre)	24.0	2013, 2014	2.0	1937	1919
Production ..... (1,000 Tons)	924	1985	5	1919	1919
<b>Barley</b>					
Harvested ..... (1,000 Acres)	160	1984,1985	1	1899,1900	1899
Yield..... (Bushels/Acre)	107.0	2014	8.5	1900	1899
Production .. (1,000 Bushels)	10,560	1985	8	1900	1899
<b>Oats</b>					
Harvested ..... (1,000 Acres)	165	1929	6	2012	1889
Yield..... (Bushels/Acre)	64.0	1995	17.5	1919	1889
Production .. (1,000 Bushels)	4,950	1947	216	2012	1889
<b>All Wheat</b>					
Harvested ..... (1,000 Acres)	413	1953	5	1890	1890
Yield..... (Bushels/Acre)	38.0	2009, 2014	8.0	1919	1890
Production .. (1,000 Bushels)	8,985	1982	90	1890	1890
<b>Other Spring Wheat</b>					
Harvested ..... (1,000 Acres)	232	1928	4	1991, 2002	1919
Yield..... (Bushels/Acre)	46.0	2008	8.5	1919	1919
Production .. (1,000 Bushels)	3,248	1928	96	2002	1919
<b>Winter Wheat</b>					
Harvested ..... (1,000 Acres)	324	1952	13	1909	1909
Yield..... (Bushels/Acre)	38.0	2009, 2014	6.0	1919	1909
Production .. (1,000 Bushels)	8,470	1972	204	1919	1909
<b>All Hay</b>					
Harvested ..... (1,000 Acres)	1,320	1991	548	1910	1909
Yield..... (Tons/Acre)	2.17	2008	0.88	1934	1909
Production ..... (1,000 Tons)	2,790	1999	594	1910	1909
<b>Alfalfa Hay</b>					
Harvested ..... (1,000 Acres)	690	2009	285	1949	1919
Yield..... (Tons/Acre)	3.20	2013	1.37	1934	1919
Production ..... (1,000 Tons)	1,782	1999	412	1934	1919
<b>Other Hay</b>					
Harvested ..... (1,000 Acres)	727	1962,1965,1967	187	1953	1919
Yield..... (Tons/Acre)	1.80	2015	0.57	1934	1919
Production ..... (1,000 Tons)	1,020	1991	225	1953	1919

**Record Highs & Lows: Livestock, Poultry, & Honey <sup>1</sup> – Wyoming:**

	Unit	Record High		Record Low		Record Began (Year)
		(Quantity)	(Year)	(Quantity)	(Year)	
<b>Cattle &amp; Calves</b>						
Inventory Jan 1 .....	(1,000 Head)	1,690	1975	36	1867	1867
Calf Crop (Annual) .....	(1,000 Head)	870	1997	580	1979	1977
Beef Cows Jan 1 <sup>2</sup> .....	(1,000 Head)	874	1998	281	1926	1920
Milk Cows Jan 1 <sup>2</sup> .....	(1,000 Head)	78	1934	1	1870, 1871, 1872, 1873	1870
Milk Production (Annual) .....	(Million Lbs)	302	1942, 1943	54	2003	1924
Cattle on Feed Jan 1 .....	(1,000 Head)	127	1983	31	1970, 1973	1965
<b>Hogs &amp; Pigs</b>						
Inventory Dec 1 <sup>3</sup> .....	(1,000 Head)	170	1928	1	1875, 1876, 1877, 1878, 1879, 1880, 1881	1875
<b>Sheep &amp; Lambs</b>						
Total Inventory Jan 1 .....	(1,000 Head)	3,972	1932	345	2015	1920
Breeding Inventory Jan 1 .....	(1,000 Head)	3,792	1932	260	2015	1920
Lamb Crop (Annual) .....	(1,000 Head)	2,419	1931	220	2011	1924
Market Sheep & Lambs Jan 1 ..	(1,000 Head)	300	1940	35	1921, 1922	1994
<b>Chickens</b>						
Layers Dec 1 .....	(1,000 Head)	28	2012	11	2008, 2009, 2010, 2011	2008
Egg Production <sup>4</sup> .....	(Million Eggs)	2.6	2012	2.4	2008, 2009, 2010, 2011	2008
<b>Honey</b>						
Production (Annual) .....	(1,000 Lbs)	3,627	2000	1,224	2010	1987

<sup>1</sup> Estimates are as of January 1, or December 1, annual (the entire year), or other time frame as noted.

<sup>2</sup> Cows & heifers two years old & over prior to 1970; cows that have calved beginning in 1970.

<sup>3</sup> January 1 estimates discontinued in 1969. December 1 estimates beginning in 1969.

<sup>4</sup> Annual egg production estimates cover the period December 1, previous year through November 30.



## Number of Farms, Land in Farms, & Average Farm Size – Wyoming & United States: 2006-2015

[Annual sales of agricultural products of \$1,000 or more.]

Year	Wyoming			United States		
	Number of Farms	Land in Farms	Average Farm Size	Number of Farms	Land in Farms	Average Farm Size
	(Number)	(1,000 Acres)	(Acres)	(Number)	(1,000 Acres)	(Acres)
2006.....	9,100	31,600	3,473	2,088,790	925,790	443
2007.....	11,000	30,200	2,745	2,204,950	921,460	418
2008.....	11,200	29,900	2,670	2,184,500	918,600	421
2009.....	11,400	30,000	2,632	2,169,660	917,590	423
2010.....	11,600	30,000	2,586	2,149,520	915,660	426
2011.....	11,800	30,000	2,542	2,131,240	914,420	429
2012.....	11,700	30,400	2,598	2,109,810	914,600	433
2013.....	11,500	30,200	2,626	2,102,010	914,030	435
2014.....	11,700	30,400	2,598	2,085,000	913,000	438
2015.....	11,600	30,400	2,621	2,067,000	912,000	441

## Number of Farms by Economic Sales Class – Wyoming: 2006-2015

Year	\$1000- \$9,999	\$10,000- \$99,999	\$100,000- \$249,999	\$250,000- \$499,999	\$500,000- 999,999 <sup>1</sup>	\$1,000,000 & Over <sup>2</sup>	Total
	(Number)	(Number)	(Number)	(Number)	(Number)	(Number)	(Number)
2006 .....	3,600	(D)	(D)	(D)	(D)	(2)	9,100
2007 .....	5,200	(D)	(D)	(D)	(D)	(2)	11,000
2008 .....	5,200	(D)	(D)	(D)	(D)	(2)	11,200
2009 .....	5,300	(D)	(D)	(D)	(D)	(2)	11,400
2010 .....	5,400	(D)	(D)	(D)	(D)	(2)	11,600
2011 .....	5,400	(D)	(D)	(D)	(D)	(2)	11,800
2012 .....	5,300	(D)	(D)	(D)	(D)	(2)	11,700
2013 .....	5,200	(D)	(D)	(D)	460	250	11,500
2014 .....	4,900	3,900	1,300	850	500	250	11,700
2015 .....	5,000	3,700	1,300	850	500	250	11,600

(D) Withheld to avoid disclosing data for individual operations.

<sup>1</sup> \$500,000 & over before 2013 & \$500,000 - \$999,999 2013 & later.

<sup>2</sup> \$1,000,000 & over economic sales class not published before 2013.

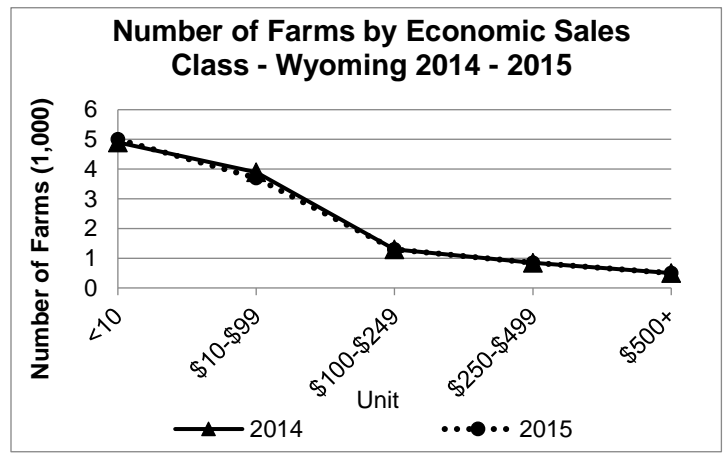
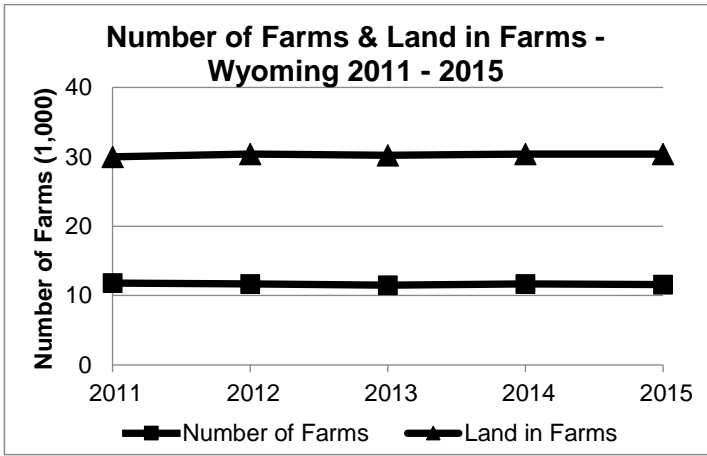
## Farms: Acres by Economic Sales Class – Wyoming: 2006-2015

Year	\$1000- \$9,999	\$10,000- \$99,999	\$100,000- \$249,999	\$250,000- \$499,999	\$500,000- 999,999 <sup>1</sup>	\$1,000,000 & Over <sup>2</sup>	Total
	(1,000 Acres)	(1,000 Acres)	(1,000 Acres)	(1,000 Acres)	(1,000 Acres)	(1,000 Acres)	(1,000 Acres)
2006 .....	3,000	(D)	(D)	(D)	(D)	(2)	31,600
2007 .....	1,500	(D)	(D)	(D)	(D)	(2)	30,200
2008 .....	1,400	(D)	(D)	(D)	(D)	(2)	29,900
2009 .....	1,200	(D)	(D)	(D)	(D)	(2)	30,000
2010 .....	1,100	(D)	(D)	(D)	(D)	(2)	30,000
2011 .....	1,100	(D)	(D)	(D)	(D)	(2)	30,000
2012 .....	1,100	(D)	(D)	(D)	(D)	(2)	30,400
2013 .....	1,100	(D)	(D)	(D)	6,600	6,400	30,200
2014 .....	1,000	4,800	4,700	6,600	6,800	6,500	30,400
2015 .....	900	4,800	4,900	6,400	6,800	6,600	30,400

(D) Withheld to avoid disclosing data for individual operations.

<sup>1</sup> \$500,000 & over before 2013 & \$500,000 - \$999,999 2013 & later.

<sup>2</sup> \$1,000,000 & over economic sales class not published before 2013.



**Farm Labor: Number Hired, Wage Rates, & Hours Worked – Mountain I Region: July 2015, October 2015, January 2016, & April 2016<sup>1 2</sup>**

	July 2015	October 2015	January 2016	April 2016
Hired Workers				
Hired Workers .....	27,000	28,000	19,000	26,000
Expected to be Employed				
150 Days or More .....	21,000	22,000	18,000	21,000
149 Days or Less.....	6,000	6,000	1,000	5,000
Hours Worked (per Week)				
Hours Worked by Hired Workers .....	47.7	45.8	43.7	46.4
Wage Rates (Dollars per Hours)				
Wage Rates for all Hired Workers .....	11.93	11.98	12.32	12.19
Type of Worker				
Field .....	11.95	11.79	12.88	12.22
Livestock .....	11.41	11.59	11.51	11.27
Field & Livestock Combined .....	11.70	11.70	11.80	11.75

<sup>1</sup> Mountain I Region includes Idaho, Montana, & Wyoming.

<sup>2</sup> Excludes Agricultural Service workers.

**Grazing Fees: Annual Average Rates – Wyoming: 2006-2015**

Year	Per Animal Unit <sup>1</sup> (Dollars per Month)	Cow-Calf (Dollars per Month)	Per Head (Dollars per Month)
2006 .....	15.10	17.30	15.80
2007 .....	15.40	17.90	16.10
2008 .....	15.70	18.40	16.40
2009 .....	16.00	18.70	16.70
2010 .....	16.60	19.30	17.20
2011 .....	17.60	20.50	18.30
2012 .....	18.70	21.80	19.40
2013 .....	18.70	21.00	19.40
2014 .....	20.00	22.00	21.00
2015 .....	21.00	23.00	21.00

<sup>1</sup> Includes animal unit plus cow-calf rate converted to animal unit (AUM) using (1 AUM=cow-calf \* 0.833)

## Farm Sector Indicators – Wyoming: 2010-2015

Wyoming	2010	2011	2012	2013	2014	2015
	\$1,000	\$1,000	\$1,000	\$1,000	\$1,000	\$1,000
Value of Agricultural Sector Production.....	1,415,571	1,956,458	1,877,551	2,076,838	2,211,566	2,043,128
Value of Crop Production .....	307,649	384,969	442,793	478,122	405,773	355,033
Value of Animals & Products Production.....	878,294	1,174,801	1,122,691	1,243,548	1,486,394	1,395,942
Farm-Related Income.....	229,627	396,687	312,068	355,169	319,399	292,152
Net Government Transactions .....	-23,896	-28,672	-45,070	-30,856	73,373	-13,920
Intermediate Product Expenses <sup>1</sup> .....	778,312	965,860	1,094,269	1,126,247	1,216,549	1,055,431
Farm Origin .....	378,363	531,220	574,236	612,248	654,375	577,969
Feed Purchases .....	128,631	186,104	232,849	232,043	272,917	233,655
Livestock & Poultry Purchases .....	235,336	329,230	312,505	343,071	347,259	320,659
Seed Purchases .....	14,397	15,887	28,882	37,134	34,200	23,656
Manufactured Inputs.....	143,409	183,389	215,548	217,385	215,641	182,804
Electricity.....	26,704	34,677	41,092	37,618	35,716	39,123
Fertilizer, Lime, & Soil Conditioners.....	34,487	47,243	59,053	54,835	53,703	52,304
Pesticides .....	12,731	12,886	19,343	19,146	21,960	19,343
Fuel & Oils.....	69,486	88,583	96,060	105,787	104,262	72,034
Other Intermediate Expenses <sup>1</sup> .....	256,540	251,251	304,486	296,614	346,533	294,657
Machine Hire & Custom Work .....	19,162	10,658	16,178	14,688	16,857	10,978
Marketing, Storage, & Transportation .....	32,751	32,950	39,420	28,910	41,373	32,812
Repair & Maintenance <sup>1</sup> .....	66,684	73,333	88,846	97,753	107,942	95,910
Miscellaneous Expenses <sup>1</sup> .....	137,943	134,310	160,043	155,262	180,361	154,956
Total Insurance Premiums <sup>2</sup> .....	27,080	34,583	35,632	42,202	46,572	36,346
Federal Commodity Insurance Premiums.....	5,214	8,184	8,380	7,864	7,027	7,496
Irrigation .....	10,107	10,405	12,139	12,583	14,335	15,378
Contract Labor .....	7,979	9,622	11,316	14,438	23,211	12,538
Net Government Transactions .....	-23,896	-28,672	-45,070	-30,856	73,373	-13,920
Direct Government Payments .....	42,662	41,292	42,573	46,043	156,277	59,971
Property Taxes & Fees <sup>1</sup> .....	66,559	69,965	87,643	76,899	82,904	73,892
Motor Vehicle Registration & Licensing Fees.....	4,588	6,032	5,184	5,799	5,648	5,098
Factor Payments to Stakeholders <sup>3</sup> .....	283,366	277,022	336,716	357,077	355,851	334,121
Hired Labor & Non-Cash Employee Compensation	116,540	114,820	145,591	164,807	158,713	133,443
Net Rent Paid to Operator Landlords .....	27,073	27,369	28,683	35,688	12,176	12,085
Net Rent Paid to Non-Operator Landlords .....	43,637	44,114	46,233	57,523	80,212	79,615
Total Interest Expenses <sup>1</sup> .....	96,115	90,720	116,209	99,060	104,751	108,978
Net Farm Income.....	204,552	551,880	148,124	270,610	316,702	354,561

<sup>1</sup> Includes expenses associated with operator.

<sup>2</sup> Includes federal and private crop and livestock insurance premiums as well as casualty, hail, motor vehicle and all other insurance premiums.

<sup>3</sup> Prior to 2008 estimates, factor payments to stakeholders only includes net rent paid to non-operator landlords.

Data Source: USDA Economic Research Service. <http://www.ers.usda.gov>

**Farm Income: Cash Receipts by Commodity – Wyoming: 2010-2015 <sup>1</sup>**

Wyoming	2010	2011	2012	2013	2014	2015
	\$1,000	\$1,000	\$1,000	\$1,000	\$1,000	\$1,000
All Commodities.....	1,178,262	1,497,608	1,685,715	1,728,449	1,834,449	1,710,415
Animals & Products .....	896,861	1,095,449	1,214,417	1,270,817	1,430,431	1,368,694
Meat Animals.....	804,534	981,094	1,092,058	1,132,963	1,283,251	1,220,484
Cattle & Calves .....	733,464	863,802	988,148	1,057,010	1,194,399	1,164,096
Hogs .....	71,070	117,292	103,910	75,953	88,852	56,388
Dairy (Milk) .....	19,619	23,834	23,134	25,467	29,952	24,504
Poultry/ Eggs .....	4,286	4,761	8,586	20,281	28,403	40,356
Chicken Eggs.....	167	175	190	13,562	21,195	32,678
Farm Chickens.....	6	7	6	N/A	N/A	N/A
Turkeys .....	4,113	4,579	8,389	6,720	7,208	7,678
Miscellaneous Livestock.....	68,421	85,760	90,639	92,106	88,825	83,350
Trout.....	175	179	1,783	1,928	1,604	1,814
Honey .....	1,946	3,251	4,769	6,545	4,821	5,559
Mohair.....	3	3	3	3	3	3
Wool.....	4,498	6,297	5,355	5,219	4,531	4,464
All Other Animals & Products .....	27,196	76,030	78,730	78,410	77,865	71,509
Crops.....	281,401	402,159	471,298	457,632	404,018	341,722
Food Grains.....	22,699	23,846	26,170	18,535	24,208	18,525
Wheat .....	22,699	23,846	26,170	18,535	24,208	18,525
Feed Crops.....	149,084	241,442	302,505	308,518	268,316	211,315
Barley.....	22,618	29,670	36,540	35,947	39,499	38,796
Corn .....	26,435	36,567	55,729	45,230	32,175	28,830
Hay .....	99,227	173,981	209,208	225,992	195,408	142,533
Oats .....	805	1,224	1,028	1,349	1,234	1,155
Vegetables & Melons.....	25,012	32,077	33,105	36,241	27,992	23,739
Dry Beans .....	25,012	32,077	33,105	36,241	27,992	23,739
All Other Crops.....	84,606	104,794	109,519	94,337	83,502	88,143
Sugar Beets .....	43,601	59,620	59,847	45,596	34,295	40,281
Miscellaneous Crops.....	41,005	45,174	49,672	48,741	49,207	47,862

<sup>1</sup> Totals may not add due to rounding; sub categories may not add to total.

N/A = Data are not available/applicable.

Values are rounded to the nearest thousand.

Data Source: USDA Economic Research Service. <http://www.ers.usda.gov>

## Agricultural Exports: Estimated Value by Commodity Group – Wyoming: 2010-2015

Wyoming	2010	2011	2012	2013	2014	2015
Beef & Veal .....	58.4	75.1	82.4	96.7	105.6	93.8
Pork.....	19.0	33.2	29.7	19.3	22.4	14.9
Hides & Skins.....	26.6	31.1	34.5	38.9	35.1	29.9
Other Livestock Products <sup>1</sup> .....	39.5	57.2	56.7	49.2	44.1	36.5
Dairy Products.....	2.3	2.9	3.2	4.2	4.3	3.6
Broiler Meat.....	-	-	-	-	-	-
Other Poultry Products <sup>2</sup> .....	0.7	0.8	1.3	3.3	3.5	4.0
Vegetables, Fresh .....	3.2	4.3	4.3	4.7	3.8	3.0
Vegetables, Processed .....	4.9	6.9	8.1	8.5	7.2	5.8
Fruits, Fresh .....	-	-	-	-	-	-
Fruits, Processed .....	-	-	-	-	-	-
Tree Nuts .....	-	-	-	-	-	-
Rice.....	-	-	-	-	-	-
Wheat.....	13.9	19.7	12.9	13.8	14.8	10.7
Corn .....	5.4	8.0	7.2	4.8	6.2	5.1
Feeds & Other Feed Grains <sup>3</sup> .....	17.4	25.3	29.0	40.4	41.7	40.0
Grain Products, Processed .....	7.8	10.0	11.9	13.5	13.1	12.3
Soybeans .....	-	-	-	-	-	-
Soybean Meal .....	-	-	-	-	-	-
Vegetable Oils.....	-	-	-	-	-	-
Other Oilseeds & Products <sup>4</sup> .....	-	-	-	-	-	-
Cotton.....	-	-	-	-	-	-
Tobacco .....	-	-	-	-	-	-
Other Plant Products <sup>5</sup> .....	38.7	53.4	60.0	55.6	51.1	53.7
<b>Total Agricultural Exports .....</b>	<b>237.8</b>	<b>327.9</b>	<b>341.1</b>	<b>352.9</b>	<b>353.0</b>	<b>313.3</b>
<b>Total Animal Products .....</b>	<b>146.4</b>	<b>200.3</b>	<b>207.8</b>	<b>211.7</b>	<b>215.1</b>	<b>182.7</b>
<b>Total Plant Products.....</b>	<b>91.4</b>	<b>127.6</b>	<b>133.4</b>	<b>141.3</b>	<b>137.9</b>	<b>130.6</b>

<sup>1</sup> Includes other non-poultry meats, animal fat, live farm animals, & other animal parts.

<sup>2</sup> Includes turkey meat, eggs, & other fowl products.

<sup>3</sup> Includes processed feeds, fodder, barley, oats, rye, & sorghum.

<sup>4</sup> Includes peanuts (oilstock), other oil crops, corn meal, other oilcake & meal, protein substances, bran & residues.

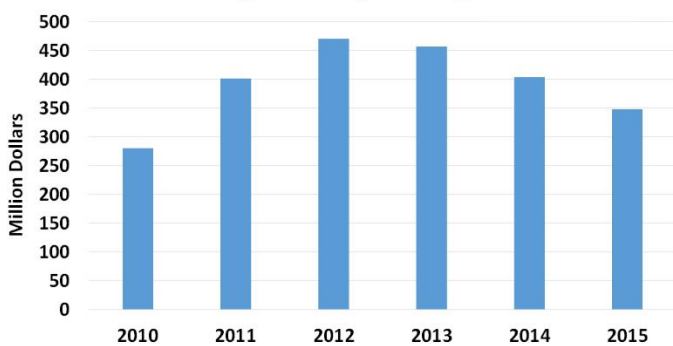
<sup>5</sup> Includes sweeteners & products, other horticulture products, planting seeds, cocoa, coffee, & other processed foods.

Data sources: USDA Economic Research Service: <http://www.ers.usda.gov>

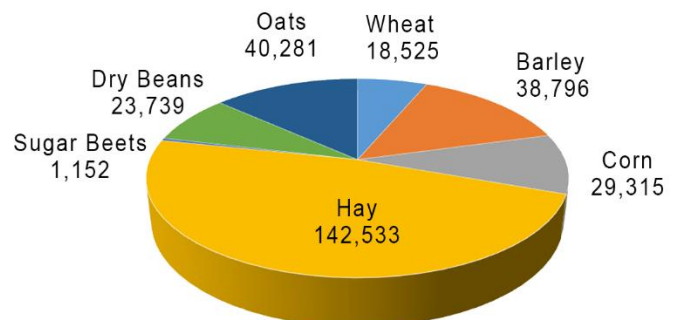
# Crops



**Cash Receipts - Wyoming 2010-2015**



**Crops Cash Receipts - Wyoming 2015**



**Barley: Area Planted & Harvested, Yield, Production, Price, & Value – Wyoming: 2006-2015**

Year	Area Planted	Area Harvested	Yield per Acre	Production	Price per Bushel <sup>1</sup>	Value of Production
	(1,000 Acres)	(1,000 Acres)	(Bushels)	(1,000 Bushels)	(Dollars)	(1,000 Dollars)
2006.....	70	57	85.0	4,845	3.32	16,085
2007.....	62	53	85.0	4,505	3.62	16,308
2008.....	90	75	92.0	6,900	5.08	35,052
2009.....	80	64	105.0	6,720	5.61	37,699
2010.....	75	62	98.0	6,076	3.97	24,122
2011.....	80	67	97.0	6,499	4.99	32,430
2012.....	85	69	89.0	6,141	6.47	39,732
2013.....	85	68	89.0	6,052	6.71	40,609
2014.....	85	68	107.0	7,276	5.98	43,510
2015.....	100	86	95.0	8,170	5.99	48,612

<sup>1</sup> Marketing year average price.

**Corn for Grain: Area Planted & Harvested, Yield, Production, Price, & Value – Wyoming: 2006-2015**

Year	Area Planted	Area Harvested	Yield per Acre	Production	Price per Bushel <sup>1</sup>	Value of Production
	(1,000 Acres)	(1,000 Acres)	(Bushels)	(1,000 Bushels)	(Dollars)	(1,000 Dollars)
2006.....	85	45	129.0	5,805	2.64	15,325
2007.....	95	60	129.0	7,740	3.12	24,149
2008.....	95	52	134.0	6,968	4.25	29,614
2009.....	90	45	140.0	6,300	4.06	25,578
2010.....	90	50	123.0	6,150	5.31	32,657
2011.....	105	70	130.0	9,100	6.20	56,420
2012.....	105	60	142.0	8,520	7.05	60,066
2013.....	100	67	127.0	8,509	4.08	34,717
2014.....	90	60	138.0	8,280	3.80	31,464
2015.....	85	59	159.0	9,381	3.60	33,772

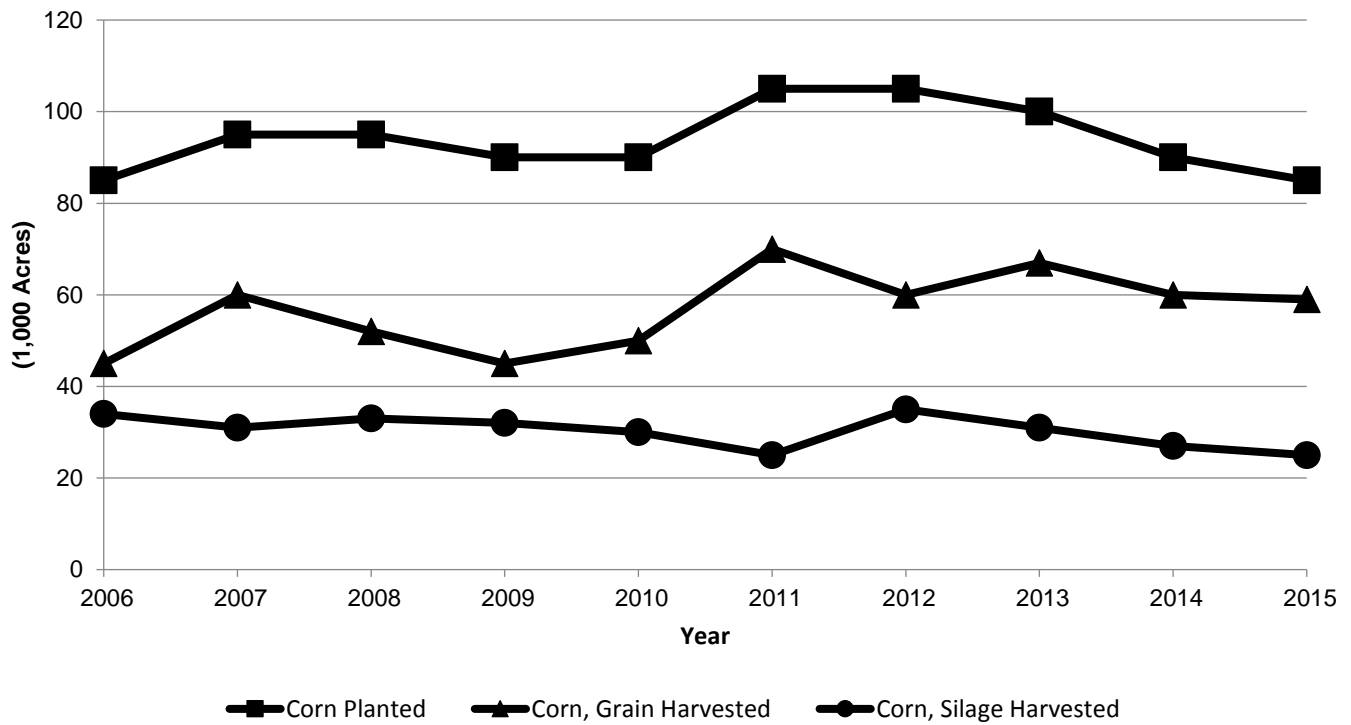
<sup>1</sup> Marketing year average price.

**Corn for Silage: Area Harvested, Yield, & Production – Wyoming: 2006-2015**

Year	Area Harvested	Yield per Acre	Production	
	(1,000 Acres)	(Tons)	(1,000 Tons)	
2006.....		34	22.0	748
2007.....		31	20.0	620
2008.....		33	23.0	759
2009.....		32	20.0	640
2010.....		30	22.0	660
2011.....		25	22.0	550
2012.....		35	21.0	735
2013.....		31	24.0	744
2014.....		27	24.0	648
2015.....		25	23.0	575



### Corn: Area Planted/Harvested - Wyoming



### Dry Edible Beans: Area Planted & Harvested, Yield, Production, Price, & Value – Wyoming: 2006-2015

Year	Area Planted (1,000 Acres)	Area Harvested (1,000 Acres)	Yield per Acre (Pounds)	Production (1,000 Cwt)	Price per Cwt <sup>1</sup> (Dollars)	Value of Production (1,000 Dollars)
2006	29.0	27.5	2,150.0	590	22.00	12,980
2007	25.0	24.0	2,310.0	555	27.40	15,207
2008	31.5	30.5	2,310.0	705	36.40	25,662
2009	37.5	34.0	2,000.0	680	30.20	20,536
2010	49.0	47.0	2,180.0	1,024	30.30	31,027
2011	35.0	33.0	2,200.0	726	39.40	28,604
2012	45.0	42.0	2,400.0	1,007	36.80	37,058
2013	39.0	37.0	2,620.0	970	33.70	32,689
2014	42.0	37.6	2,130.0	799	33.50	26,767
2015	32.0	31.0	2,300.0	713	27.50	21,960

<sup>1</sup> Marketing year average price.

**All Hay: Area Harvested, Yield, Production, Price, & Value – Wyoming: 2006-2015**

Year	Area Harvested	Yield	Production	Price per Ton <sup>1</sup>	Value of Production
	(1,000 Acres)	(Tons)	(1,000 Tons)	(Dollars)	(1,000 Dollars)
2006.....	1,050	2.01	2,115	101.00	215,045
2007.....	1,120	2.10	2,348	109.00	255,932
2008.....	1,030	2.17	2,237	114.00	253,055
2009.....	1,270	2.00	2,537	98.00	247,103
2010.....	1,190	2.07	2,467	91.50	222,591
2011.....	1,120	2.10	2,350	139.00	317,700
2012.....	935	2.06	1,928	208.00	394,714
2013.....	990	2.11	2,088	184.00	378,144
2014.....	1,060	2.12	2,243	141.00	308,762
2015.....	1,080	2.14	2,315	114.00	258,655

<sup>1</sup> Marketing year average price.

**Alfalfa Hay: Area Harvested, Yield, Production, Price, & Value – Wyoming: 2006-2015**

Year	Area Harvested	Yield	Production	Price per Ton <sup>1</sup>	Value of Production
	(1,000 Acres)	(Tons)	(1,000 Tons)	(Dollars)	(1,000 Dollars)
2006.....	500	2.80	1,400	101.00	141,400
2007.....	600	2.70	1,620	109.00	176,580
2008.....	530	2.90	1,537	115.00	176,755
2009.....	690	2.50	1,725	99.00	170,775
2010.....	620	2.60	1,612	93.00	149,916
2011.....	620	2.50	1,550	142.00	220,100
2012.....	475	2.80	1,330	210.00	279,300
2013.....	450	3.20	1,440	187.00	269,280
2014.....	490	2.60	1,274	145.00	184,730
2015.....	530	2.50	1,325	118.00	157,675

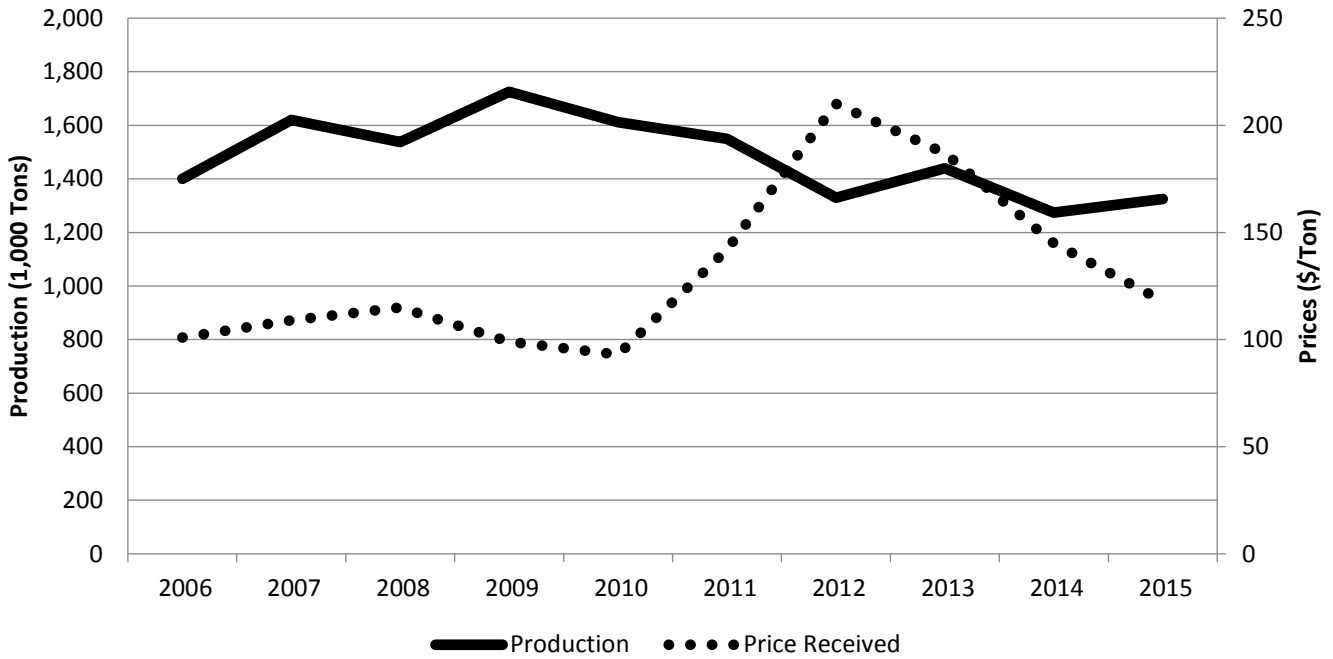
<sup>1</sup> Marketing year average price.

**Other Hay: Area Harvested, Yield, Production, Price, & Value – Wyoming: 2006-2015**

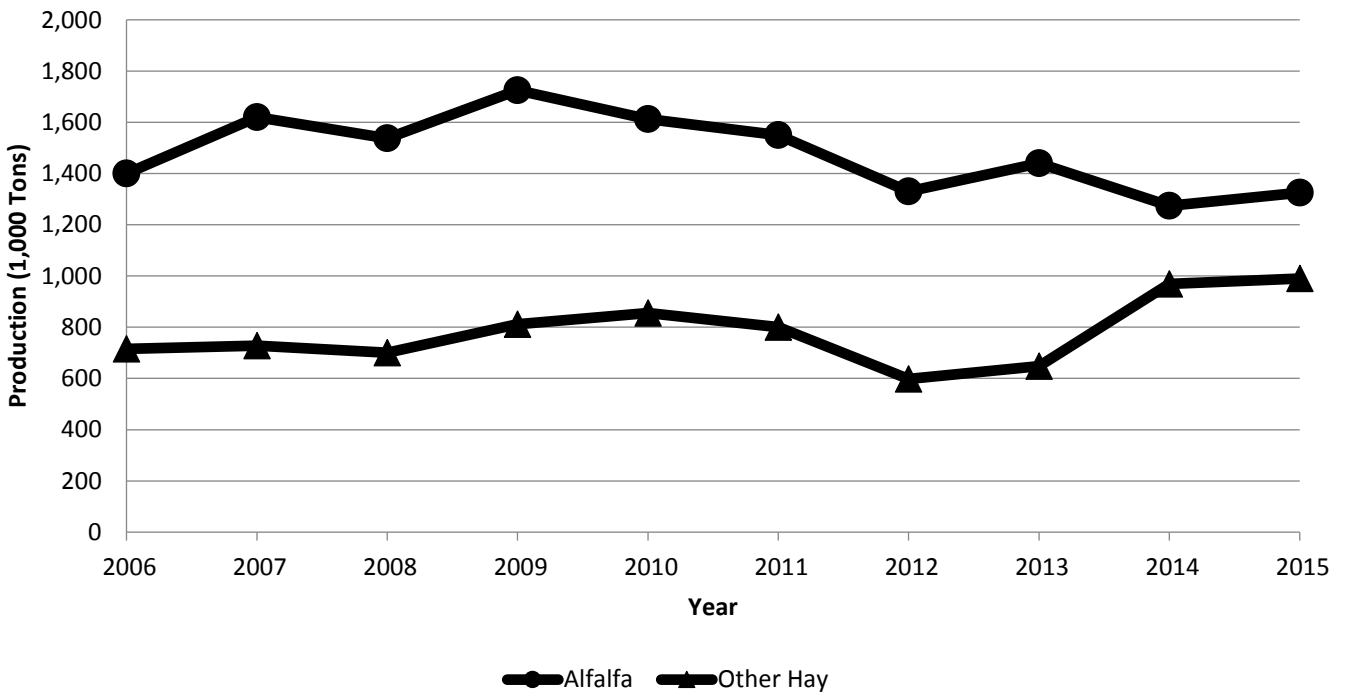
Year	Area Harvested	Yield	Production	Price per Ton <sup>1</sup>	Value of Production
	(1,000 Acres)	(Tons)	(1,000 Tons)	(Dollars)	(1,000 Dollars)
2006.....	550	1.30	715	103.00	73,645
2007.....	520	1.40	728	109.00	79,352
2008.....	500	1.40	700	109.00	76,300
2009.....	580	1.40	812	94.00	76,328
2010.....	570	1.50	855	85.00	72,675
2011.....	500	1.60	800	122.00	97,600
2012.....	460	1.30	598	193.00	115,414
2013.....	540	1.20	648	168.00	108,864
2014.....	570	1.70	969	128.00	124,032
2015.....	550	1.80	990	101.00	100,980

<sup>1</sup> Marketing year average price.

### Alfalfa: Production & Price – Wyoming



### Hay: Production – Wyoming



**Oats: Area Planted & Harvested, Yield, Production, Price, & Value – Wyoming: 2006-2015**

Year	Area Planted	Area Harvested	Yield per Acre	Production	Price per Bushel <sup>1</sup>	Value of Production
	(1,000 Acres)	(1,000 Acres)	(Bushels)	(1,000 Bushels)	(Dollars)	(1,000 Dollars)
2006 .....	48.0	12.0	57.0	684	2.15	1,471
2007 .....	40.0	8.0	47.0	376	2.82	1,060
2008 .....	30.0	11.0	50.0	550	3.26	1,793
2009 .....	40.0	9.0	61.0	549	2.94	1,614
2010 .....	34.0	8.0	61.0	488	2.70	1,318
2011 .....	30.0	11.0	52.0	572	3.30	1,888
2012 .....	30.0	6.0	36.0	216	4.71	1,017
2013 .....	31.0	10.0	57.0	570	3.95	2,252
2014 .....	30.0	7.0	59.0	413	3.19	1,317
2015 .....	23.0	12.0	60.0	720	2.86	2,052

<sup>1</sup> Marketing year average price.

**Sugarbeets: Area Planted & Harvested, Yield, Production, Price, & Value – Wyoming: 2006-2015**

Year	Area Planted	Area Harvested	Yield per Acre	Production	Price per Ton <sup>1</sup>	Value of Production
	(1,000 Acres)	(1,000 Acres)	(Tons)	(1,000 Tons)	(Dollars)	(1,000 Dollars)
2006 .....	42.8	40.1	19.9	798	46.80	37,346
2007 .....	30.8	30.2	21.8	658	40.20	26,452
2008 .....	29.7	27.1	24.5	664	52.60	34,926
2009 .....	32.4	25.6	26.5	678	53.90	36,544
2010 .....	30.5	30.4	27.0	821	70.30	57,716
2011 .....	31.0	30.9	27.8	859	74.60	64,081
2012 .....	31.8	31.3	28.6	895	61.00	54,595
2013 .....	30.0	29.7	29.5	876	37.20	32,587
2014 .....	30.9	30.0	27.8	834	49.20	41,033
2015 .....	31.3	31.2	30.1	939	(2)	(2)

<sup>1</sup> Marketing year average price.

<sup>2</sup> Published in February 2017.

**Winter Wheat: Area Planted & Harvested, Yield, Production, Price, & Value – Wyoming: 2006-2015**

Year	Area Planted	Area Harvested	Yield per Acre	Production	Price per Bushel <sup>1</sup>	Value of Production
	(1,000 Acres)	(1,000 Acres)	(Bushels)	(1,000 Bushels)	(Dollars)	(1,000 Dollars)
2006 .....	150	135	27.0	3,645	4.58	16,694
2007 .....	140	125	25.0	3,125	6.68	20,875
2008 .....	150	125	29.0	3,625	6.42	23,273
2009 .....	150	125	38.0	4,750	4.45	21,138
2010 .....	150	130	32.0	4,160	5.63	23,421
2011 .....	150	130	34.0	4,420	6.44	28,465
2012 .....	145	115	26.0	2,990	7.59	22,694
2013 .....	150	120	24.0	2,880	7.10	20,448
2014 .....	140	125	38.0	4,750	5.67	26,933
2015 .....	145	130	32.0	4,160	4.24	17,638

<sup>1</sup> Marketing year average price.

**Crop Stocks by Quarter – Wyoming: 2010-2015**

Date	Barley, Off Farm <sup>1</sup> (Bushels)	Corn, Off Farm <sup>1</sup> (Bushels)	Hay, On Farm (Tons)	Wheat, Off Farm <sup>1</sup> (Bushels)
March 1, 2010.....	(D)	(D)		(D)
June 1, 2010.....	(D)	(D)		(D)
September 1, 2010.....	(D)	(D)		(D)
December 1, 2010.....	(D)	(D)	1,700,000	(D)
March 1, 2011.....	(D)	(D)		(D)
June 1, 2011.....	(D)	(D)		(D)
September 1, 2011.....	(D)	(D)		(D)
December 1, 2011.....	(D)	209,000	1,300,000	(D)
March 1, 2012.....	(D)	(D)		(D)
June 1, 2012.....	(D)	(D)		(D)
September 1, 2012.....	(D)	(D)		(D)
December 1, 2012.....	(D)	(D)	970,000	(D)
March 1, 2013.....	(D)	(D)		(D)
June 1, 2013.....	(D)	(D)		(D)
September 1, 2013.....	4,240,000	(D)		(D)
December 1, 2013.....	3,593,000	(D)	1,000,000	(D)
March 1, 2014.....	3,460,000	(D)		(D)
June 1, 2014.....	(D)	815,000		(D)
September 1, 2014.....	4,481,000	(D)		(D)
December 1, 2014.....	4,565,000	(D)	1,500,000	1,396,000
March 1, 2015.....	3,402,000	(D)		927,000
June 1, 2015.....	1,605,000	688,000		436,000
September 1, 2015.....	5,456,000	(D)		(D)
December 1, 2015.....	5,575,000	(D)	1,300,000	(D)

(D) Withheld to avoid disclosing data for individual operations.

<sup>1</sup> Includes stocks at mills, elevators, terminals, & processors.

**Hay Stocks: Position & Month – Wyoming: 2006-2015**

Year	On Farms May 1 (1,000 Tons)	On Farms December 1 (1,000 Tons)
2006.....	394	1,600
2007.....	220	1,900
2008.....	240	1,532
2009.....	230	2,040
2010.....	400	1,700
2011.....	365	1,300
2012.....	400	970
2013.....	200	1,000
2014.....	280	1,500
2015.....	490	1,300

**Grain Storage: Capacity by Position & Off-Farm Facilities – Wyoming: December 1, 2010-2015**

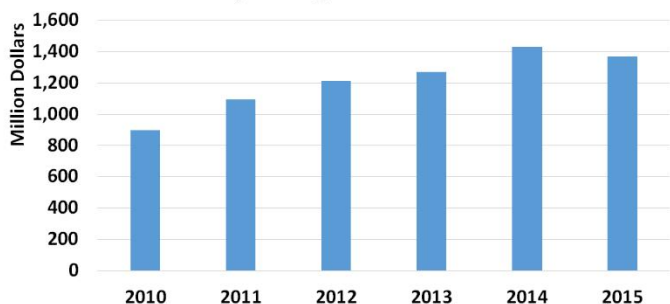
Date	Off Farm <sup>1</sup>
	(1,000 Bushels)
2010.....	10,000
2011.....	10,000
2012.....	10,000
2013.....	10,000
2014.....	10,000
2015.....	11,000

<sup>1</sup> Includes stocks at mills, elevators, terminals, & processors.

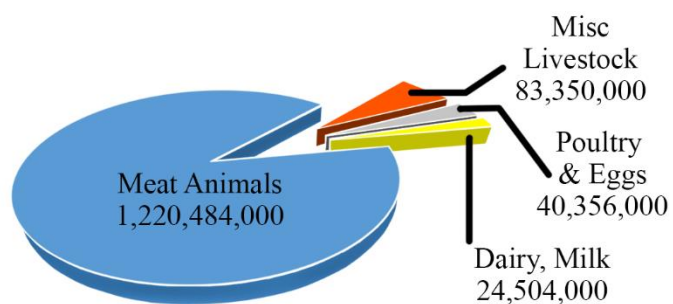
# Livestock



**Livestock & Products Cash Receipts - Wyoming 2010-2015**



**Livestock Cash Receipts breakout - Wyoming 2015**



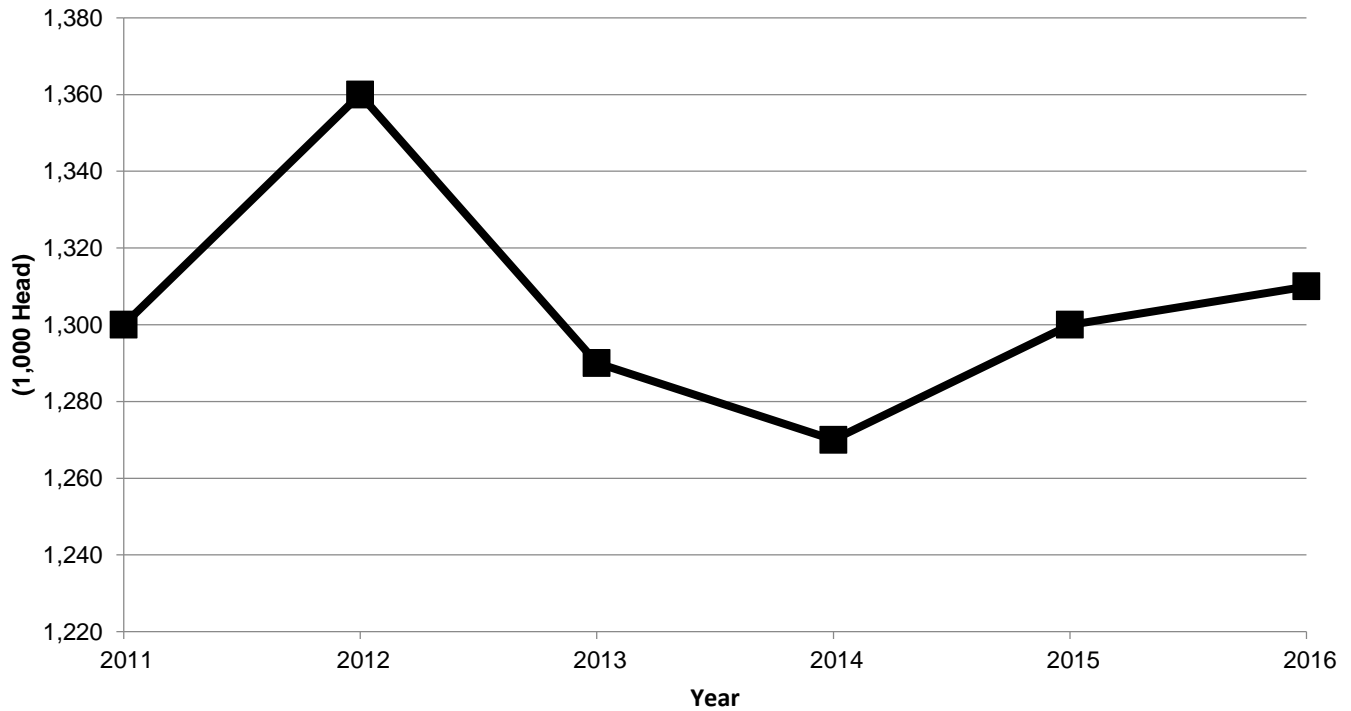


**Cattle & Calves: Number by Class & Calf Crop – Wyoming: January 1, 2012-2016**

Class	2012	2013	2014	2015	2016	
	(Head)	(Head)	(Head)	(Head)	(Head)	
All Cattle & Calves .....	1,360,000	1,290,000	1,270,000	1,300,000	1,310,000	
Cows & Heifers, That Have Calved .....	720,000	700,000	700,000	700,000	710,000	
Beef Cows .....	714,000	694,000	694,000	694,000	704,000	
Milk Cows .....	6,000	6,000	6,000	6,000	6,000	
Calves, Under 500 Pounds .....	110,000	95,000	95,000	85,000	100,000	
Steers, 500 Pounds & Over .....	180,000	160,000	150,000	135,000	145,000	
Heifers, 500 Pounds & Over .....	310,000	295,000	285,000	340,000	315,000	
Beef Cow Replacements .....	165,000	171,000	175,000	193,000	188,000	
Milk Cow Replacements .....	5,000	4,000	4,000	5,000	5,000	
Other Heifers .....	140,000	120,000	106,000	142,000	122,000	
Bulls, 500 Pounds & Over .....	40,000	40,000	40,000	40,000	40,000	
Cattle on Feed .....	75,000	70,000	75,000	75,000	70,000	
Calf Crop .....	660,000	640,000	660,000	660,000	660,000	
Unit	Value of Inventory <sup>1</sup>					
Value per Head .....	(Dollars)	1,330	1,340	1,530	2,130	1,630
Value of Inventory .....	(1,000 Dollars)	1,808,800	1,728,600	1,943,100	2,769,000	2,135,300

<sup>1</sup> Value of all cattle & calves.

**Cattle & Calves: Inventory – Wyoming January 1, 2011-2016**



### Cattle & Calves: Production, Marketings & Income – Wyoming: 2011-2015

Unit	2011	2012	2013	2014	2015
Production <sup>1</sup> ..... (1,000 Lbs)	506,822	486,095	532,250	556,512	555,876
Marketings <sup>2</sup> ..... (1,000 Lbs)	729,920	776,200	808,650	731,700	745,200
Value of Production ..... (1,000 Dollars)	603,619	618,850	698,529	928,182	895,976
Value of Sales <sup>3</sup> ..... (1,000 Dollars)	863,802	988,148	1,057,010	1,194,399	1,164,096
Value of Home Consumption..... (1,000 Dollars)	11,963	12,682	5,270	4,383	7,860
Gross Income..... (1,000 Dollars)	875,765	1,000,830	1,062,280	1,198,782	1,171,956

<sup>1</sup> Includes custom slaughter for use on farms where produced & state out-shipments, but excludes inter-farm sales within the state.

<sup>2</sup> Excludes custom slaughter at commercial establishments. Production & marketings are live weight in pounds.

<sup>3</sup> Excludes inter-farm in-state sales.

### Cattle & Calves: Balance Sheet – Wyoming: 2011-2015

Inventory Additions & Removals	2011	2012	2013	2014	2015
	(Head)	(Head)	(Head)	(Head)	(Head)
Inventory Beginning of Year .....	1,300,000	1,360,000	1,290,000	1,270,000	1,300,000
Calf Crop .....	680,000	660,000	640,000	660,000	670,000
In-Shipments.....	400,000	350,000	375,000	300,000	280,000
Marketings <sup>1</sup>					
Cattle.....	808,000	858,000	813,000	742,000	764,000
Calves .....	168,000	180,000	177,500	146,500	136,500
Farm Slaughter Cattle & Calves <sup>2</sup> .....	1,000	1,000	500	500	500
Deaths					
Cattle.....	12,000	12,000	12,000	11,000	12,000
Calves .....	31,000	29,000	32,000	30,000	27,000
Inventory End of Year .....	1,360,000	1,290,000	1,270,000	1,300,000	1,310,000

<sup>1</sup> Includes custom slaughter for use on farms where produced & State out-shipments, but excludes inter-farm sales within the State.

<sup>2</sup> Excludes custom slaughter at commercial establishments.

### Commercial Cattle Slaughter – Wyoming: Monthly 2014-2015

Month	Number Slaughtered		Total Live Weight		Average Live Weight	
	2014	2015	2014	2015	2014	2015
	(Head)	(Head)	(1,000 Pounds)	(1,000 Pounds)	(Pounds)	(Pounds)
January .....	700	600	754	594	1,061	1,080
February.....	600	600	656	649	1,076	1,119
March.....	500	500	545	538	1,135	1,098
April.....	500	500	556	539	1,113	1,146
May.....	500	400	506	437	1,099	1,093
June.....	500	400	493	375	1,095	986
July.....	500	500	577	522	1,069	1,088
August.....	600	600	721	722	1,181	1,183
September .....	500	400	582	458	1,077	1,146
October .....	300	200	339	223	1,094	1,174
November .....	500	500	596	570	1,124	1,139
December .....	600	600	614	665	1,041	1,039
<b>Annual Total <sup>1</sup> .....</b>	<b>6,300</b>	<b>5,700</b>	<b>6,939</b>	<b>6,291</b>	<b>1,096</b>	<b>1,106</b>

<sup>1</sup> Totals may not add due to rounding.

## Dairy: Milk Production & Milkfat – Wyoming: 2011-2015

Unit	2011	2012	2013	2014	2015
Number of Milk Cows on Farms <sup>1</sup> ..... (1,000 Hd)	6,000	6,000	6,000	6,000	6,000
Production of Milk & Milkfat <sup>2</sup>					
Milk per Cow					
Milk.....(Pounds)	20,517	20,650	21,367	21,583	22,567
Milkfat.....(Pounds)	700	719	750	822	779
Total					
Percentage Milkfat ..... (Percent)	3.41	3.48	3.51	3.81	3.45
Milk..... (Million Pounds)	123	124	128	130	135
Milkfat..... (Million Pounds)	4	4	5	5	5
Milk Price..... (Dollars/100 Pounds)	19.60	18.90	20.10	23.40	18.30
Value of Production.....(1,000 Dollars)	24,128	23,417	25,768	30,303	24,778

<sup>1</sup> Average number of cows on farms during year, excluding heifers not yet freshened.

<sup>2</sup> Milk sold to plants & dealers as whole milk & equivalent amounts of milk for cream. Includes milk produced by dealers' own herds & small amounts sold directly to consumers. Includes milk produced by institutional herds. Excludes milk sucked by calves.

## Milk & Cream: Marketings, Used on Farm, Income, & Value – Wyoming: 2011-2015

Unit	2011	2012	2013	2014	2015
Combined Marketings of Milk & Cream					
Milk Sold..... (Million Pounds)	122	122	127	128	134
Average Price					
Per 100 Pounds of Milk <sup>1</sup> .....(Dollars)	19.60	18.90	20.10	23.40	18.30
Per Pound of Milkfat.....(Dollars)	5.75	5.43	5.73	6.14	5.30
Value of Milk Marketings.....(1,000 Dollars)	23,834	23,134	25,467	29,952	24,504
Used for Milk, Cream & Butter by Producers					
Milk Utilized <sup>4</sup> ..... (Million Pounds)	0.20	0.20	0.20	0.20	0.20
Value.....(Dollars)	39,000	38,000	40,000	47,000	37,000
Milk Used on Farm for Feed... (Million Pounds)	1.30	1.30	1.30	1.30	1.30
Gross Producer Income <sup>2</sup> .....(1,000 Dollars)	23,873	23,172	25,507	29,999	24,541
Value of Milk Produced <sup>3</sup> .....(1,000 Dollars)	24,128	23,417	25,768	30,303	24,778

<sup>1</sup> Average price for marketing year.

<sup>2</sup> Cash receipts from marketings of milk & cream, plus value of milk used for home consumption.

<sup>3</sup> Includes value of milk fed to calves.

<sup>4</sup> Utilized for home consumption

## Honey: Number of Colonies, Yield, Production, Stocks, Price, & Value – Wyoming: 2006-2015

[Producers with 5 or more colonies.]

Year	Honey Producing Colonies <sup>1</sup>	Yield per Colony	Production	Stocks December 15 <sup>2</sup>	Average Price per Pound <sup>3</sup>	Value of Production <sup>4</sup>
	(1,000)	(Pounds)	(1,000 Pounds)	(1,000 Pounds)	(Dollars)	(1,000 Dollars)
2006 .....	39	85.0	3,315	497	0.98	3,249
2007 .....	43	80.0	3,440	894	1.00	3,440
2008 .....	39	61.0	2,379	381	1.37	3,259
2009 .....	37	48.0	1,776	391	1.43	2,540
2010 .....	34	36.0	1,224	282	1.59	1,946
2011 .....	35	54.0	1,890	265	1.72	3,251
2012 .....	50	51.0	2,550	459	1.87	4,769
2013 .....	47	66.0	3,102	558	2.11	6,545
2014 .....	38	61.0	2,318	255	2.08	4,821
2015 .....	38	77.0	2,926	146	1.90	5,559

<sup>1</sup> Honey producing colonies are the maximum number of colonies from which honey was taken during the year. It is possible to take honey from colonies which did not survive the entire year.

<sup>2</sup> Stocks held by producers.

<sup>3</sup> Average price per pound based on expanded sales.

<sup>4</sup> Value of production is equal to production multiplied by average price per pound.

**Hogs & Pigs: Inventory Total & by Weight Group, Farrowings & Pig Crop – Wyoming:  
December 1, 2011-2015**

Class & Wt. Groups	Hogs & Pigs Inventory: Total & by Weight Group				
	2011	2012	2013	2014	2015
	(Head)	(Head)	(Head)	(Head)	(Head)
<b>Total Hogs &amp; Pigs .....</b>	<b>102,000</b>	<b>86,000</b>	<b>90,000</b>	<b>83,000</b>	<b>96,000</b>
Total Breeding Hogs & Pigs.....	33,000	35,000	35,000	32,000	33,000
Total Market Hogs & Pigs .....	69,000	51,000	55,000	51,000	63,000
Market Hogs & Pigs Weight Groups					
Under 50 Pounds.....	38,000	29,000	29,000	34,000	47,000
50 - 119 Pounds .....	15,000	5,000	7,000	7,000	7,000
120 - 179 Pounds .....	11,000	7,000	7,000	4,000	4,000
180 Pounds & Over .....	5,000	10,000	12,000	6,000	5,000
Units	<b>Sows Farrowing &amp; Pigs Saved <sup>1</sup></b>				
Sows Farrowing .....	(Head) 72,000	(Head) 72,000	(Head) 72,000	(Head) 74,000	(Head) 68,000
Pigs Saved.....	(Head) 778,000	(Head) 766,000	(Head) 762,000	(Head) 776,000	(Head) 683,000
Pigs per Litter.....	(Head) 10.81	(Head) 10.64	(Head) 10.58	(Head) 10.49	(Head) 10.04
Units	<b>Inventory Value</b>				
Value, All Hogs & Pigs.....	(Dollars/Head) 140.00	(Dollars/Head) 130.00	(Dollars/Head) 155.00	(Dollars/Head) 160.00	(Dollars/Head) 105.00

<sup>1</sup> Farrowings, pigs saved & pigs per litter from November 30, the previous year through December 1.

**Hogs & Pigs: Production, Marketings & Income – Wyoming: 2011-2015**

Units	2011	2012	2013	2014	2015
Production <sup>1</sup> .....	(1,000 Pounds) 165,446	(1,000 Pounds) 144,125	(1,000 Pounds) 105,066	(1,000 Pounds) 101,572	(1,000 Pounds) 89,915
Marketings <sup>2</sup> .....	(1,000 Pounds) 163,658	(1,000 Pounds) 144,179	(1,000 Pounds) 104,655	(1,000 Pounds) 104,045	(1,000 Pounds) 88,150
Value of Production <sup>3</sup> .....	(1,000 Dollars) 118,416	(1,000 Dollars) 103,837	(1,000 Dollars) 76,255	(1,000 Dollars) 86,817	(1,000 Dollars) 57,437
Value of Sales <sup>3 4</sup> .....	(1,000 Dollars) 117,292	(1,000 Dollars) 103,910	(1,000 Dollars) 75,953	(1,000 Dollars) 88,852	(1,000 Dollars) 56,388
Value of Home Consumption.....	(1,000 Dollars) 789	(1,000 Dollars) 622	(1,000 Dollars) 359	(1,000 Dollars) 425	(1,000 Dollars) 311
Gross Income.....	(1,000 Dollars) 118,081	(1,000 Dollars) 104,532	(1,000 Dollars) 76,312	(1,000 Dollars) 89,277	(1,000 Dollars) 56,699

<sup>1</sup> Adjustments made for in-shipments & changes in inventories.

<sup>2</sup> Excludes custom slaughter for use on farms where produced & inter-farm sales within the state.

<sup>3</sup> Includes allowance for higher average price of state in-shipments & out-shipments of feeder pigs.

<sup>4</sup> Receipts from marketings & sale of farm slaughter. Excludes inter-farm in-state sales.

**Hogs & Pigs: Balance Sheet – Wyoming: 2011-2015**

Inventory Additions & Removals	2011	2012	2013	2014	2015
	(Head)	(Head)	(Head)	(Head)	(Head)
Inventory Beginning of Year <sup>1</sup> .....	99,000	102,000	86,000	90,000	83,000
Annual Pig Crop <sup>2</sup> .....	778,000	766,000	762,000	776,000	683,000
Inshipments.....	4,000	4,000	4,000	4,000	4,000
Marketings <sup>3</sup> .....	757,000	765,000	732,000	766,000	651,000
Farm Slaughter <sup>4</sup> .....	2,000	1,000	1,000	1,000	1,000
Deaths.....	20,000	20,000	29,000	20,000	13,000
Inventory End of Year <sup>5</sup> .....	102,000	86,000	90,000	83,000	96,000

<sup>1</sup> Hogs & pigs inventory is as of December 1, previous year.

<sup>2</sup> From November 30, previous year to December 1.

<sup>3</sup> Includes custom slaughter for use on farm where produced, state out-shipments, but excludes inter-farm sales within the state.

<sup>4</sup> Excludes custom slaughter for farmers at commercial establishments.

<sup>5</sup> Hogs & pigs inventory is as of December 1.

## Commercial Hog Slaughter – Wyoming: Monthly 2014-2015

Month	Number Slaughtered		Total Live Weight		Average Live Weight	
	2014	2015	2014	2015	2014	2015
			(1,000 Pounds)	(1,000 Pounds)	(Pounds)	(Pounds)
January .....	300	300	69	88	275	268
February .....	200	200	47	57	259	259
March.....	200	300	60	84	259	271
April.....	300	300	78	88	244	294
May.....	200	200	58	58	243	262
June.....	200	200	41	58	257	261
July .....	300	400	69	96	248	261
August.....	1,200	1,000	308	265	252	257
September .....	500	500	131	127	273	265
October .....	200	200	47	52	249	291
November .....	300	300	76	83	280	261
December .....	200	300	49	69	256	275
<b>Annual Total.....</b>	<b>4,000</b>	<b>4,200</b>	<b>1,033</b>	<b>1,126</b>	<b>258</b>	<b>266</b>

## Sheep & Lambs: Inventory by Class & Lamb Crop – Wyoming: January 1, 2012-2016

Class	2012	2013	2014	2015	2016
	(Head)	(Head)	(Head)	(Head)	(Head)
All Sheep & Lambs <sup>1</sup> .....	370,000	375,000	355,000	345,000	355,000
Sheep & Lambs Kept for Breeding					
All Breeding Sheep & Lambs .....	270,000	275,000	265,000	260,000	265,000
Ewes .....	215,000	225,000	220,000	210,000	215,000
Rams .....	7,000	8,000	7,000	7,000	7,000
Replacement Lambs.....	48,000	42,000	38,000	43,000	43,000
Market Sheep & Lambs					
Total Market Sheep & Lambs .....	100,000	100,000	90,000	85,000	90,000
Market Sheep .....	4,000	2,000	1,000	4,000	5,000
Market Lambs.....	96,000	98,000	89,000	81,000	85,000
Market Lambs by Size Group					
Under 65 Pounds.....	1,000	1,000	3,000	2,000	1,000
65 - 84 Pounds .....	10,000	12,000	8,000	6,000	10,000
85 - 105 Pounds .....	51,000	45,000	51,000	46,000	43,000
Over 105 Pounds.....	34,000	40,000	27,000	27,000	31,000
Deaths					
Sheep .....	10,000	9,000	7,000	9,000	(2)
Lambs.....	14,000	10,000	9,000	11,000	(2)
Units	Lamb Crop & Value of Inventory				
Lamb Crop <sup>3</sup> .....	(Head) 235,000	225,000	240,000	235,000	
Lambing Rate <sup>4</sup> .....	(Lambs/100 Ewes) 109	100	109	112	(2)
Value per Head <sup>5</sup> .....	(Dollars) 239	186	182	211	207

<sup>1</sup> All sheep includes new crop lambs. New crop lambs are lambs born after September 30, the previous year.

<sup>2</sup> Data available 2017

<sup>3</sup> Total for the year. Lamb crop defined as lambs marked, docked or branded.

<sup>4</sup> Not strictly a lambing rate. Represents lamb crop expressed as a percent of ewes 1 year old & older on hand at the beginning of the year.

<sup>5</sup> Average value of all sheep, including lambs, at the beginning of the year.

**Sheep & Lamb: Inventory by Class – Wyoming: January 1, 2007-2016**

Year	Inventory					
	Breeding Sheep		Replacement Lambs Under One Year Old	Total Breeding Sheep & Lambs	Market Sheep & Lambs	Total Sheep & Lambs
	Ewes	Rams				
(1,000 Head)	(1,000 Head)	(1,000 Head)	(1,000 Head)	(1,000 Head)	(1,000 Head)	
2007 .....	265.0	10.0	60.0	335.0	105.0	440.0
2008 .....	260.0	9.0	61.0	330.0	95.0	425.0
2009 .....	260.0	10.0	55.0	325.0	95.0	420.0
2010 .....	240.0	9.0	51.0	300.0	75.0	375.0
2011 .....	220.0	8.0	47.0	275.0	90.0	365.0
2012 .....	215.0	7.0	48.0	270.0	100.0	370.0
2013 .....	225.0	8.0	42.0	275.0	100.0	375.0
2014 .....	220.0	7.0	38.0	265.0	90.0	355.0
2015 .....	210.0	7.0	43.0	260.0	85.0	345.0
2016 .....	215.0	7.0	43.0	265.0	90.0	355.0

**Wool: Production & Value – Wyoming: 2011-2015**

Units	2011	2012	2013	2014	2015
Sheep & Lambs Shorn <sup>1</sup> ..... (Head)	275,000	275,000	285,000	250,000	270,000
Weight per Fleece..... (Pounds)	8.9	9.3	8.6	9.2	9.2
Shorn Wool Production..... (1,000 Pounds)	2,450	2,550	2,450	2,300	2,480
Average Price per Pound..... (Dollars)	2.57	2.10	2.13	1.97	1.80
Value..... (1,000 Dollars)	6,297	5,355	5,219	4,531	4,464

<sup>1</sup> Includes shearing at commercial feeding yards.

**Market Sheep & Lamb: Inventory by Weight Group – Wyoming: January 1, 2007-2016**

Year	Market Lambs					Market Sheep	Total Market Sheep & Lambs
	Under 65 Pounds	65 - 84 Pounds	85 - 105 Pounds	Over 105 Pounds	Total		
	(1,000 Head)	(1,000 Head)	(1,000 Head)	(1,000 Head)	(1,000 Head)	(1,000 Head)	(1,000 Head)
2007 .....	2.0	4.0	45.0	52.0	103.0	2.0	105.0
2008 .....	2.0	5.0	35.0	50.0	92.0	3.0	95.0
2009 .....	4.0	7.0	46.0	37.0	94.0	1.0	95.0
2010 .....	4.0	5.0	30.5	31.5	71.0	4.0	75.0
2011 .....	2.0	5.0	45.0	36.0	88.0	2.0	90.0
2012 .....	1.0	10.0	51.0	34.0	96.0	4.0	100.0
2013 .....	1.0	12.0	45.0	40.0	98.0	2.0	100.0
2014 .....	3.0	8.0	51.0	27.0	89.0	1.0	90.0
2015 .....	2.0	6.0	46.0	27.0	81.0	4.0	85.0
2016 .....	1.0	10.0	43.0	31.0	85.0	5.0	90.0

**Sheep & Lamb: Lamb Crop, Farm Slaughter & Death Loss – Wyoming: 2007-2016**

Year	Ewes 1 Year & Older January 1	Lambs per 100 Ewes January 1	Lamb Crop <sup>1</sup>	Farm Slaughter <sup>2</sup>	Deaths	
					Sheep	Lambs
	(1,000 Head)	(Number)	(1,000 Head)	(1,000 Head)	(1,000 Head)	(1,000 Head)
2007.....	265.0	102	270.0	2.0	13.0	19.0
2008.....	260.0	100	260.0	2.0	10.0	16.0
2009.....	260.0	98	255.0	2.0	13.0	18.0
2010.....	240.0	96	230.0	2.0	9.0	13.0
2011.....	220.0	100	220.0	2.0	11.0	13.0
2012.....	215.0	109	235.0	2.0	10.0	14.0
2013.....	225.0	100	225.0	2.0	9.0	10.0
2014.....	220.0	109	240.0	2.0	7.0	9.0
2015.....	210.0	112	235.0	2.0	9.0	11.0
2016.....	215.0	(3)	(3)	(3)	(3)	(3)

<sup>1</sup> Lamb crop is defined as lambs born in the eastern states & lambs docked or branded in the western states.

<sup>2</sup> Excludes custom slaughter for farmers at commercial establishments.

<sup>3</sup> Data not available till January 2017.

**Commercial Sheep & Lamb Slaughter - Wyoming: Monthly 2014-2015**

Month	Number Slaughtered		Total Live Weight		Average Live Weight	
	2014	2015	2014	2015	2014	2015
	(Head)	(Head)	(1,000 Pounds)	(1,000 Pounds)	(Pounds)	(Pounds)
January.....	100	100	19	14	150	141
February.....	100	100	10	18	139	139
March.....	100	100	7	16	143	147
April.....	100	100	12	11	136	152
May.....	100	100	13	12	146	150
June.....	100	100	12	10	166	149
July.....	100	100	16	19	163	146
August.....	300	300	43	45	148	145
September.....	100	200	16	22	142	139
October.....	100	100	11	8	135	155
November.....	200	100	22	15	128	140
December.....	100	100	11	17	163	141
<b>Annual Total.....</b>	<b>1,300</b>	<b>1,400</b>	<b>192</b>	<b>208</b>	<b>146</b>	<b>144</b>



## Losses of Lambs Before Docking, by Cause: Wyoming, 2010-2015

Cause of Loss	2010	2011	2012	2013	2014	2015
Number of Head	Head					
Bear	(D)	100	300	100	100	100
Bobcat	100	(D)	100	(D)	(D)	(D)
Coyote	3,900	4,400	4,800	4,100	2,900	3,100
Dog	(D)	100	100	(D)	100	100
Mountain Lion	100	100	100	(D)	(D)	(D)
Foxes	700	100	700	200	500	500
Wolves	(D)	(D)	100	(D)	(D)	100
Eagles	1,200	1,900	1,300	1,800	1,300	1,300
Ravens	700	500	500	400	200	200
Other/Unknown <sup>1</sup>	(D)	(D)	(D)	700	200	100
<b>Total Predators</b>	<b>6,700</b>	<b>7,200</b>	<b>8,000</b>	<b>7,300</b>	<b>5,300</b>	<b>5,500</b>
Diseases	500	600	900	300	200	200
Enterotoxaemia	100	100	500	100	200	200
Weather Conditions	9,700	19,700	7,500	4,700	5,000	5,200
Lambing Complications	1,800	3,300	1,800	2,000	1,900	1,900
Old Age	NA	NA	NA	NA	NA	NA
On Back	(D)	(D)	(D)	(D)	(D)	(D)
Poison	100	(D)	100	(D)	200	200
Theft	(D)	(D)	(D)	100	(D)	(D)
Other/Unknown <sup>1</sup>	100	100	200	2,500	1,200	1,800
<b>Total Non-Predators</b>	<b>12,300</b>	<b>23,800</b>	<b>11,000</b>	<b>9,700</b>	<b>8,700</b>	<b>9,500</b>
<b>Total Losses</b>	<b>19,000</b>	<b>31,000</b>	<b>19,000</b>	<b>17,000</b>	<b>14,000</b>	<b>15,000</b>

Foot notes at bottom of page.

## Losses of Lambs After Docking, by Cause: Wyoming, 2010-2015

Cause of Loss	2010	2011	2012	2013	2014	2015
Number of Head	Head					
Bear	200	900	500	900	100	100
Bobcat	(D)	(D)	100	(D)	(D)	(D)
Coyote	5,900	5,500	5,300	4,700	4,100	4,900
Dog	200	300	200	100	200	200
Mountain Lion	600	400	500	300	200	200
Foxes	100	200	100	(D)	200	200
Wolves	100	(D)	300	300	(D)	200
Eagles	600	900	600	500	600	700
Ravens	100	(D)	300	(D)	100	200
Other/Unknown <sup>1</sup>	(D)	(D)	(D)	300	200	300
<b>Total Predators</b>	<b>7,800</b>	<b>8,200</b>	<b>7,900</b>	<b>7,100</b>	<b>5,700</b>	<b>7,000</b>
Diseases	700	1,300	1,100	400	200	200
Enterotoxaemia	800	600	700	100	400	500
Weather Conditions	1,400	2,300	3,300	900	1,200	1,400
Lambing Complications	NA	NA	NA	NA	NA	NA
Old Age	NA	NA	NA	NA	NA	NA
On Back	(D)	(D)	(D)	(D)	100	100
Poison	1,300	300	500	300	100	100
Theft	200	(D)	200	(D)	200	300
Other/Unknown <sup>1</sup>	800	300	300	1,200	1,100	1,400
<b>Total Non-Predators</b>	<b>5,200</b>	<b>4,800</b>	<b>6,100</b>	<b>2,900</b>	<b>3,300</b>	<b>4,000</b>
<b>Total Losses</b>	<b>13,000</b>	<b>13,000</b>	<b>14,000</b>	<b>10,000</b>	<b>9,000</b>	<b>11,000</b>

(D) indicates Un-published: i.e. less than 100 head.

<sup>1</sup> Other/Unknown includes Other and Unknown causes combined with Un-published causes.

Totals may not add due to rounding.

# Losses of Sheep and Lambs Combined, by Cause: Wyoming, 2010-2015 <sup>1</sup>

Cause of Loss	2010	2011	2012	2013	2014	2015
<b>Number of Head</b>	<b>Head</b>					
Bear	300	1,600	1,000	1,500	300	300
Bobcat	100	(D)	200	(D)	(D)	(D)
Coyote	11,200	10,900	11,800	10,600	8,100	9,400
Dog	300	600	600	200	400	400
Mountain Lion	900	700	700	500	300	300
Foxes	800	300	800	200	700	700
Wolves	300	(D)	500	500	(D)	400
Eagles	2,100	2,900	2,000	2,300	1,900	2,100
Ravens	800	500	900	400	300	500
Other/Unknown <sup>2</sup>	(D)	(D)	(D)	1,100	700	600
<b>Total Predators</b>	<b>16,800</b>	<b>17,500</b>	<b>18,500</b>	<b>17,300</b>	<b>12,700</b>	<b>14,700</b>
Diseases	1,700	2,600	3,000	1,100	800	900
Enterotoxaemia	900	800	1,400	400	700	800
Weather Conditions	12,600	26,800	12,200	6,500	6,900	7,400
Lambing Complications	3,100	4,200	3,200	3,000	3,200	3,500
Old Age	2,100	1,500	1,900	900	1,200	1,500
On Back	500	200	300	100	200	200
Poison	2,100	700	1,400	800	600	700
Theft	200	100	400	400	400	600
Other/Unknown <sup>2</sup>	1,000	600	700	5,500	3,300	4,700
<b>Total Non-Predators</b>	<b>24,200</b>	<b>37,500</b>	<b>24,500</b>	<b>18,700</b>	<b>17,300</b>	<b>20,300</b>
<b>Total Losses</b>	<b>41,000</b>	<b>55,000</b>	<b>43,000</b>	<b>36,000</b>	<b>30,000</b>	<b>35,000</b>
<b>Percent of Total by Cause</b>	<b>Percent</b>					
Bear	0.7	2.9	2.3	4.2	1.0	0.9
Bobcat	0.2	(D)	0.5	(D)	(D)	(D)
Coyote	27.3	19.8	27.4	29.4	27.0	26.9
Dog	0.7	1.1	1.4	0.6	1.3	1.1
Mountain Lion	2.2	1.3	1.6	1.4	1.0	0.9
Foxes	2.0	0.5	1.9	0.6	2.3	2.0
Wolves	0.7	(D)	1.2	1.4	(D)	1.1
Eagles	5.1	5.3	4.7	6.4	6.3	6.0
Ravens	2.0	0.9	2.1	1.1	1.0	1.4
Other/Unknown <sup>2</sup>	(D)	(D)	(D)	3.1	2.3	1.7
<b>Total Predators</b>	<b>41.0</b>	<b>31.8</b>	<b>43.0</b>	<b>48.1</b>	<b>42.3</b>	<b>42.0</b>
Diseases	4.1	4.7	7.0	3.1	2.7	2.6
Enterotoxaemia	2.2	1.5	3.3	1.1	2.3	2.3
Weather Conditions	30.7	48.7	28.4	18.1	23.0	21.1
Lambing Complications	7.6	7.6	7.4	8.3	10.7	10.0
Old Age	5.1	2.7	4.4	2.5	4.0	4.3
On Back	1.2	0.4	0.7	0.3	0.7	0.6
Poison	5.1	1.3	3.3	2.2	2.0	2.0
Theft	0.5	0.2	0.9	1.1	1.3	1.7
Other/Unknown <sup>2</sup>	2.4	1.1	1.6	15.3	11.0	13.4
<b>Total Non-Predators</b>	<b>59.0</b>	<b>68.2</b>	<b>57.0</b>	<b>51.9</b>	<b>57.7</b>	<b>58.0</b>
<b>Total Losses</b>	<b>100.0</b>	<b>100.0</b>	<b>100.0</b>	<b>100.0</b>	<b>100.0</b>	<b>100.0</b>
<b>Dollar Value of Losses by Cause</b>	<b>1,000 dollars</b>					
Bear	28	310	182	240	50	55
Bobcat	7	(D)	35	(D)	(D)	(D)
Coyote	898	1,967	2,124	1,634	1,316	1,671
Dog	28	115	116	33	66	72
Mountain Lion	77	133	126	81	50	55
Foxes	59	53	140	30	111	122
Wolves	33	(D)	91	81	(D)	72
Eagles	171	516	353	340	302	368
Ravens	58	88	161	59	47	90
Other/Unknown <sup>2</sup>	(D)	(D)	(D)	166	119	110
<b>Total Predators</b>	<b>1,358</b>	<b>3,181</b>	<b>3,328</b>	<b>2,665</b>	<b>2,063</b>	<b>2,614</b>
Diseases	152	490	562	177	137	169
Enterotoxaemia	66	146	252	66	114	142
Weather Conditions	1,006	4,944	2,182	994	1,115	1,308
Lambing Complications	300	782	612	480	542	650
Old Age	271	333	404	166	221	299
On Back	65	44	64	18	34	37
Poison	193	142	275	136	103	132
Theft	15	22	77	70	69	112
Other/Unknown <sup>2</sup>	79	115	130	879	550	856
<b>Total Non-Predators</b>	<b>2,145</b>	<b>7,017</b>	<b>4,557</b>	<b>2,987</b>	<b>2,886</b>	<b>3,706</b>
<b>Total Losses</b>	<b>3,503</b>	<b>10,198</b>	<b>7,884</b>	<b>5,652</b>	<b>4,949</b>	<b>6,320</b>

(D) indicates Un-published: i.e. less than 100 head.

<sup>1</sup> Lamb losses include both before and after docking losses.

<sup>2</sup> Other/Unknown includes Other and Unknown causes combined with Un-published causes.

Totals may not add due to rounding.

## Losses of Sheep, by Cause: Wyoming, 2010-2015

Cause of Loss	2010	2011	2012	2013	2014	2015
<b>Number of Head</b>	<b>Head</b>					
Bear	100	600	200	500	100	100
Bobcat	(D)	(D)	(D)	(D)	(D)	(D)
Coyote	1,400	1,000	1,700	1,800	1,100	1,400
Dog	100	200	300	100	100	100
Mountain Lion	200	200	100	200	100	100
Foxes	(D)	(D)	(D)	(D)	(D)	(D)
Wolves	200	(D)	100	200	(D)	100
Eagles	300	100	100	(D)	(D)	100
Ravens	(D)	(D)	100	(D)	(D)	100
Other/Unknown <sup>1</sup>	(D)	(D)	(D)	100	300	200
<b>Total Predators</b>	<b>2,300</b>	<b>2,100</b>	<b>2,600</b>	<b>2,900</b>	<b>1,700</b>	<b>2,200</b>
Diseases	500	700	1,000	400	400	500
Enterotoxaemia	(D)	100	200	200	100	100
Weather Conditions	1,500	4,800	1,400	900	700	800
Lambing Complications	1,300	900	1,400	1,000	1,300	1,600
Old Age	2,100	1,500	1,900	900	1,200	1,500
On Back	500	200	300	100	100	100
Poison	700	400	800	500	300	400
Theft	(D)	100	200	300	200	300
Other/Unknown <sup>1</sup>	100	200	200	1,800	1,000	1,500
<b>Total Non-Predators</b>	<b>6,700</b>	<b>8,900</b>	<b>7,400</b>	<b>6,100</b>	<b>5,300</b>	<b>6,800</b>
<b>Total Losses</b>	<b>9,000</b>	<b>11,000</b>	<b>10,000</b>	<b>9,000</b>	<b>7,000</b>	<b>9,000</b>
<b>Percent of Total by Cause</b>	<b>Percent</b>					
Bear	1.1	5.5	2.0	5.6	1.4	1.1
Bobcat	(D)	(D)	(D)	(D)	(D)	(D)
Coyote	15.6	9.1	17.0	20.0	15.7	15.6
Dog	1.1	1.8	3.0	1.1	1.4	1.1
Mountain Lion	2.2	1.8	1.0	2.2	1.4	1.1
Foxes	(D)	(D)	(D)	(D)	(D)	(D)
Wolves	2.2	(D)	1.0	2.2	(D)	1.1
Eagles	3.3	0.9	1.0	(D)	(D)	1.1
Ravens	(D)	(D)	1.0	(D)	(D)	1.1
Other/Unknown <sup>1</sup>	(D)	(D)	(D)	1.1	4.3	2.2
<b>Total Predators</b>	<b>25.6</b>	<b>19.1</b>	<b>26.0</b>	<b>32.2</b>	<b>24.3</b>	<b>24.4</b>
Diseases	5.6	6.4	10.0	4.4	5.7	5.6
Enterotoxaemia	(D)	0.9	2.0	2.2	1.4	1.1
Weather Conditions	16.7	43.6	14.0	10.0	10.0	8.9
Lambing Complications	14.4	8.2	14.0	11.1	18.6	17.8
Old Age	23.3	13.6	19.0	10.0	17.1	16.7
On Back	5.6	1.8	3.0	1.1	1.4	1.1
Poison	7.8	3.6	8.0	5.6	4.3	4.4
Theft	(D)	0.9	2.0	3.3	2.9	3.3
Other/Unknown <sup>1</sup>	1.1	1.8	2.0	20.0	14.3	16.7
<b>Total Non-Predators</b>	<b>74.4</b>	<b>80.9</b>	<b>74.0</b>	<b>67.8</b>	<b>75.7</b>	<b>75.6</b>
<b>Total Losses</b>	<b>100.0</b>	<b>100.0</b>	<b>100.0</b>	<b>100.0</b>	<b>100.0</b>	<b>100.0</b>
<b>Dollar Value of Losses by Cause</b>	<b>1,000 dollars</b>					
Bear	13	133	43	92	19	20
Bobcat	(D)	(D)	(D)	(D)	(D)	(D)
Coyote	181	222	361	331	203	279
Dog	13	44	64	18	19	20
Mountain Lion	26	44	21	37	19	20
Foxes	(D)	(D)	(D)	(D)	(D)	(D)
Wolves	26	(D)	21	37	(D)	20
Eagles	39	22	21	(D)	(D)	20
Ravens	(D)	(D)	21	(D)	(D)	20
Other/Unknown <sup>1</sup>	(D)	(D)	(D)	18	55	40
<b>Total Predators</b>	<b>297</b>	<b>466</b>	<b>553</b>	<b>534</b>	<b>314</b>	<b>439</b>
Diseases	65	155	213	74	74	100
Enterotoxaemia	(D)	22	43	37	19	20
Weather Conditions	194	1,066	298	166	129	160
Lambing Complications	168	200	298	184	240	319
Old Age	271	333	404	166	221	299
On Back	65	44	64	18	19	20
Poison	90	89	170	92	55	80
Theft	(D)	22	43	55	37	60
Other/Unknown <sup>1</sup>	13	44	43	331	185	299
<b>Total Non-Predators</b>	<b>864</b>	<b>1,976</b>	<b>1,573</b>	<b>1,122</b>	<b>978</b>	<b>1,357</b>
<b>Total Losses</b>	<b>1,161</b>	<b>2,442</b>	<b>2,125</b>	<b>1,656</b>	<b>1,292</b>	<b>1,796</b>

(D) indicates Un-published: i.e. less than 100 head.

<sup>1</sup> Other/Unknown includes Other and Unknown causes combined with Un-published causes.

Totals may not add due to rounding.

## Losses of All Lambs, by Cause: Wyoming, 2010-2015 <sup>1</sup>

Cause of Loss	2010	2011	2012	2013	2014	2015
<b>Number of Head</b>	<b>Head</b>					
Bear	200	1,000	800	1,000	200	200
Bobcat	100	(D)	200	(D)	(D)	(D)
Coyote	9,800	9,900	10,100	8,800	7,000	8,000
Dog	200	400	300	100	300	300
Mountain Lion	700	500	600	300	200	200
Foxes	800	300	800	200	700	700
Wolves	100	(D)	400	300	(D)	300
Eagles	1,800	2,800	1,900	2,300	1,900	2,000
Ravens	800	500	800	400	300	400
Other/Unknown <sup>2</sup>	(D)	(D)	(D)	1,000	400	400
<b>Total Predators</b>	<b>14,500</b>	<b>15,400</b>	<b>15,900</b>	<b>14,400</b>	<b>11,000</b>	<b>12,500</b>
Diseases	1,200	1,900	2,000	700	400	400
Enterotoxaemia	900	700	1,200	200	600	700
Weather Conditions	11,100	22,000	10,800	5,600	6,200	6,600
Lambing Complications	1,800	3,300	1,800	2,000	1,900	1,900
Old Age	NA	NA	NA	NA	NA	NA
On Back	(D)	(D)	(D)	(D)	100	100
Poison	1,400	300	600	300	300	300
Theft	200	(D)	200	100	200	300
Other/Unknown <sup>2</sup>	900	400	500	3,700	2,300	3,200
<b>Total Non-Predators</b>	<b>17,500</b>	<b>28,600</b>	<b>17,100</b>	<b>12,600</b>	<b>12,000</b>	<b>13,500</b>
<b>Total Losses</b>	<b>32,000</b>	<b>44,000</b>	<b>33,000</b>	<b>27,000</b>	<b>23,000</b>	<b>26,000</b>
<b>Percent of Total by Cause</b>	<b>Percent</b>					
Bear	0.6	2.3	2.4	3.7	0.9	0.8
Bobcat	0.3	(D)	0.6	(D)	(D)	(D)
Coyote	30.6	22.5	30.6	32.6	30.4	30.8
Dog	0.6	0.9	0.9	0.4	1.3	1.2
Mountain Lion	2.2	1.1	1.8	1.1	0.9	0.8
Foxes	2.5	0.7	2.4	0.7	3.0	2.7
Wolves	0.3	(D)	1.2	1.1	(D)	1.2
Eagles	5.6	6.4	5.8	8.5	8.3	7.7
Ravens	2.5	1.1	2.4	1.5	1.3	1.5
Other/Unknown <sup>2</sup>	(D)	(D)	(D)	3.7	1.7	1.5
<b>Total Predators</b>	<b>45.3</b>	<b>35.0</b>	<b>48.2</b>	<b>53.3</b>	<b>47.8</b>	<b>48.1</b>
Diseases	3.8	4.3	6.1	2.6	1.7	1.5
Enterotoxaemia	2.8	1.6	3.6	0.7	2.6	2.7
Weather Conditions	34.7	50.0	32.7	20.7	27.0	25.4
Lambing Complications	5.6	7.5	5.5	7.4	8.3	7.3
Old Age	NA	NA	NA	NA	NA	NA
On Back	(D)	(D)	(D)	(D)	0.4	0.4
Poison	4.4	0.7	1.8	1.1	1.3	1.2
Theft	0.6	(D)	0.6	0.4	0.9	1.2
Other/Unknown <sup>2</sup>	2.8	0.9	1.5	13.7	10.0	12.3
<b>Total Non-Predators</b>	<b>54.7</b>	<b>65.0</b>	<b>51.8</b>	<b>46.7</b>	<b>52.2</b>	<b>51.9</b>
<b>Total Losses</b>	<b>100.0</b>	<b>100.0</b>	<b>100.0</b>	<b>100.0</b>	<b>100.0</b>	<b>100.0</b>
<b>Dollar Value of Losses by Cause</b>	<b>1,000 dollars</b>					
Bear	15	176	140	148	32	35
Bobcat	7	(D)	35	(D)	(D)	(D)
Coyote	717	1,745	1,763	1,302	1,113	1,392
Dog	15	71	52	15	48	52
Mountain Lion	51	88	105	44	32	35
Foxes	59	53	140	30	112	122
Wolves	7	(D)	70	44	(D)	52
Eagles	132	494	332	340	302	348
Ravens	59	88	140	59	48	70
Other/Unknown <sup>2</sup>	(D)	(D)	(D)	148	64	70
<b>Total Predators</b>	<b>1,061</b>	<b>2,714</b>	<b>2,775</b>	<b>2,131</b>	<b>1,749</b>	<b>2,175</b>
Diseases	88	335	349	104	64	70
Enterotoxaemia	66	123	209	30	95	122
Weather Conditions	813	3,878	1,885	829	986	1,148
Lambing Complications	132	582	314	296	302	331
Old Age	NA	NA	NA	NA	NA	NA
On Back	(D)	(D)	(D)	(D)	16	17
Poison	103	53	105	44	48	52
Theft	15	(D)	35	15	32	52
Other/Unknown <sup>2</sup>	66	71	87	548	366	557
<b>Total Non-Predators</b>	<b>1,281</b>	<b>5,041</b>	<b>2,984</b>	<b>1,865</b>	<b>1,908</b>	<b>2,349</b>
<b>Total Losses</b>	<b>2,342</b>	<b>7,756</b>	<b>5,759</b>	<b>3,996</b>	<b>3,657</b>	<b>4,524</b>

(D) indicates Un-published: i.e. less than 100 head.

<sup>1</sup> Lamb losses include both before and after docking losses.

<sup>2</sup> Other/Unknown includes Other and Unknown causes combined with Un-published causes.

Totals may not add due to rounding.

## Losses of All Sheep and Lambs, by District, by Cause: Wyoming, 2015 <sup>1</sup>

Cause of Loss	North West	North East	West	South Central	South East	State
<b>Number of Head</b>	<b>Head</b>					
Bear	200	(D)	100	(D)	(D)	300
Bobcat	(D)	(D)	(D)	(D)	(D)	(D)
Coyote	1,200	2,600	2,600	1,200	1,800	9,400
Dog	200	100	100	(D)	(D)	400
Mountain Lion	200	100	(D)	(D)	(D)	300
Foxes	(D)	300	300	(D)	100	700
Wolves	300	100	(D)	(D)	(D)	400
Eagles	(D)	1,100	(D)	400	600	2,100
Ravens	200	(D)	200	(D)	100	500
Other/Unknown <sup>2</sup>	100	400	(D)	100	(D)	600
<b>Total Predators</b>	<b>2,400</b>	<b>4,700</b>	<b>3,300</b>	<b>1,700</b>	<b>2,600</b>	<b>14,700</b>
Diseases	400	200	200	(D)	100	900
Enterotoxaemia	400	100	100	100	100	800
Weather Conditions	1,400	3,000	1,200	700	1,100	7,400
Lambing Complications	800	1,600	500	200	400	3,500
Old Age	500	400	100	100	400	1,500
On Back	200	(D)	(D)	(D)	(D)	200
Poison	200	200	(D)	300	(D)	700
Theft	(D)	200	200	200	(D)	600
Other/Unknown <sup>2</sup>	300	600	3,000	800	(D)	4,700
<b>Total Non-Predators</b>	<b>4,200</b>	<b>6,300</b>	<b>5,300</b>	<b>2,400</b>	<b>2,100</b>	<b>20,300</b>
<b>Total Losses</b>	<b>6,600</b>	<b>11,000</b>	<b>8,600</b>	<b>4,100</b>	<b>4,700</b>	<b>35,000</b>
<b>Percent of Total by Cause</b>	<b>Percent</b>					
Bear	3.0	(D)	1.2	(D)	(D)	0.9
Bobcat	(D)	(D)	(D)	(D)	(D)	(D)
Coyote	18.2	23.6	30.2	29.3	38.3	26.9
Dog	3.0	0.9	1.2	(D)	(D)	1.1
Mountain Lion	3.0	0.9	(D)	(D)	(D)	0.9
Foxes	(D)	2.7	3.5	(D)	2.1	2.0
Wolves	4.6	0.9	(D)	(D)	(D)	1.1
Eagles	(D)	10.0	(D)	9.8	12.8	6.0
Ravens	3.0	(D)	2.3	(D)	2.1	1.4
Other/Unknown <sup>2</sup>	1.5	3.6	(D)	2.4	(D)	1.7
<b>Total Predators</b>	<b>36.4</b>	<b>42.7</b>	<b>38.4</b>	<b>41.5</b>	<b>55.3</b>	<b>42.0</b>
Diseases	6.1	1.8	2.3	(D)	2.1	2.6
Enterotoxaemia	6.1	0.9	1.2	2.4	2.1	2.3
Weather Conditions	21.2	27.3	14.0	17.1	23.4	21.1
Lambing Complications	12.1	14.6	5.8	4.9	8.5	10.0
Old Age	7.6	3.6	1.2	2.4	8.5	4.3
On Back	3.0	(D)	(D)	(D)	(D)	0.6
Poison	3.0	1.8	(D)	7.3	(D)	2.0
Theft	(D)	1.8	2.3	4.9	(D)	1.7
Other/Unknown <sup>2</sup>	4.6	5.5	34.9	19.5	(D)	13.4
<b>Total Non-Predators</b>	<b>63.6</b>	<b>57.3</b>	<b>61.6</b>	<b>58.5</b>	<b>44.7</b>	<b>58.0</b>
<b>Total Losses</b>	<b>100.0</b>	<b>100.0</b>	<b>100.0</b>	<b>100.0</b>	<b>100.0</b>	<b>100.0</b>

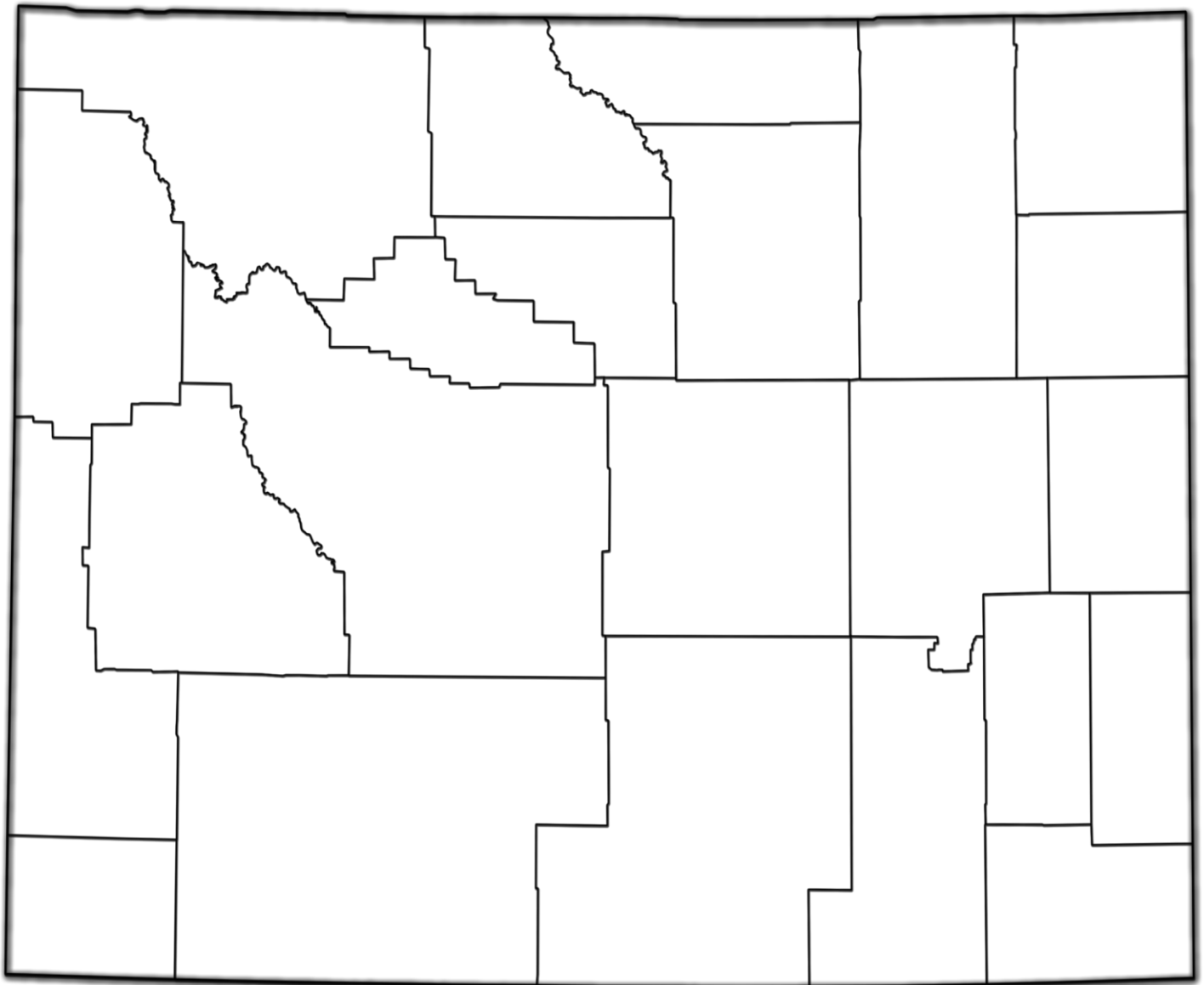
(D) indicates Un-published: i.e. less than 100 head.

<sup>1</sup> Lamb losses include both before and after docking losses.

<sup>2</sup> Other/Unknown includes Other and Unknown causes combined with Un-published causes.

Totals may not add due to rounding.

# County Estimates



### County Estimates: Barley – Wyoming: 2014 & 2015

District & County <sup>1</sup>	Acres Planted		Acres Harvested		Harvested Yield		Production	
	2014	2015	2014	2015	2014	2015	2014	2015
	(Acres)	(Acres)	(Acres)	(Acres)	(Bu/Acre)	(Bu/Acre)	(Bushels)	(Bushels)
Big Horn .....	20,500	28,000	19,300	27,100	110.7	86.6	2,137,000	2,346,000
Fremont .....	4,500	-	2,600	-	98.1	-	255,000	-
Hot Springs.....	500	1,000	500	900	114.0	110.0	57,000	99,000
Park.....	19,500	24,000	19,300	24,000	120.5	103.6	2,325,000	2,486,000
Washakie.....	14,000	-	13,300	-	127.2	-	1,692,000	-
Other Counties <sup>2</sup> .....	-	24,000	-	21,000	-	109.0	-	2,290,000
<b>Northwest.....</b>	<b>59,000</b>	<b>77,000</b>	<b>55,000</b>	<b>73,000</b>	<b>117.6</b>	<b>98.9</b>	<b>6,466,000</b>	<b>7,221,000</b>
Crook.....	1,500	-	1,400	-	46.4	-	65,000	-
Other Counties <sup>2</sup> .....	5,500	6,000	3,300	2,600	45.5	34.2	150,000	89,000
<b>Northeast.....</b>	<b>7,000</b>	<b>6,000</b>	<b>4,700</b>	<b>2,600</b>	<b>45.7</b>	<b>34.2</b>	<b>215,000</b>	<b>89,000</b>
Other Counties <sup>2</sup> .....	10,000	10,000	3,200	6,700	70.3	83.1	225,000	557,000
<b>West.....</b>	<b>10,000</b>	<b>10,000</b>	<b>3,200</b>	<b>6,700</b>	<b>70.3</b>	<b>83.1</b>	<b>225,000</b>	<b>557,000</b>
Other Counties <sup>2</sup> .....	1,500	2,000	700	500	100.0	104.0	70,000	52,000
<b>South Central.....</b>	<b>1,500</b>	<b>2,000</b>	<b>700</b>	<b>500</b>	<b>100.0</b>	<b>104.0</b>	<b>70,000</b>	<b>52,000</b>
Platte .....	-	2,000	-	1,800	-	83.3	-	150,000
Other Counties <sup>2</sup> .....	7,500	3,000	4,400	1,400	68.2	72.1	300,000	101,000
<b>Southeast.....</b>	<b>7,500</b>	<b>5,000</b>	<b>4,400</b>	<b>3,200</b>	<b>68.2</b>	<b>78.4</b>	<b>300,000</b>	<b>251,000</b>
<b>Wyoming .....</b>	<b>85,000</b>	<b>100,000</b>	<b>68,000</b>	<b>86,000</b>	<b>107.0</b>	<b>95.0</b>	<b>7,276,000</b>	<b>8,170,000</b>

Dash (-) indicates estimates not available.

<sup>1</sup> Counties not listed may also be included in "Other Counties or "Other Districts".

<sup>2</sup> Counties with missing data are included in the appropriate district's "Other Counties".

### County Estimates: Corn for Grain – Wyoming: 2014 & 2015

District & County <sup>1</sup>	Acres Planted		Acres Harvested		Harvested Yield		Production	
	2014	2015	2014	2015	2014	2015	2014	2015
	(Acres)	(Acres)	(Acres)	(Acres)	(Bu/Acre)	(Bu/Acre)	(Bushels)	(Bushels)
Big Horn .....	11,000	8,900	5,600	4,100	103.8	152.4	581,000	625,000
Park.....	6,000	4,900	2,800	3,300	110.4	163.6	309,000	540,000
Other Counties <sup>2</sup> .....	8,800	8,200	2,800	1,900	151.1	160.5	423,000	305,000
<b>Northwest.....</b>	<b>25,800</b>	<b>22,000</b>	<b>11,200</b>	<b>9,300</b>	<b>117.2</b>	<b>158.1</b>	<b>1,313,000</b>	<b>1,470,000</b>
Goshen.....	32,000	32,500	27,900	28,300	149.5	163.1	4,170,000	4,615,000
Laramie .....	14,400	13,500	10,500	10,400	117.6	144.9	1,235,000	1,507,000
Platte .....	11,500	-	8,000	-	152.5	-	1,220,000	-
Other Counties <sup>2</sup> .....	2,100	14,000	600	9,800	150.0	165.6	90,000	1,623,000
<b>Southeast.....</b>	<b>60,000</b>	<b>60,000</b>	<b>47,000</b>	<b>48,500</b>	<b>142.9</b>	<b>159.7</b>	<b>6,715,000</b>	<b>7,745,000</b>
<b>Other Districts .....</b>	<b>4,200</b>	<b>3,000</b>	<b>1,800</b>	<b>1,200</b>	<b>140.0</b>	<b>138.3</b>	<b>252,000</b>	<b>166,000</b>
<b>Wyoming .....</b>	<b>90,000</b>	<b>85,000</b>	<b>60,000</b>	<b>59,000</b>	<b>138.0</b>	<b>159.0</b>	<b>8,280,000</b>	<b>9,381,000</b>

Dash (-) indicates estimates not available.

<sup>1</sup> Counties not listed may also be included in "Other Counties or "Other Districts".

<sup>2</sup> Counties with missing data are included in the appropriate district's "Other Counties".



### County Estimates: Winter Wheat, All Cropping Practices – Wyoming: 2014 & 2015

District & County	Acres				Harvested Yield		Production	
	Planted		Harvested		Yield		Production	
	2014	2015	2014	2015	2014	2015	2014	2015
	(Acres)	(Acres)	(Acres)	(Acres)	(Bu/Acre)	(Bu/Acre)	(Bushels)	(Bushels)
Campbell.....	5,500	4,900	4,600	4,400	30.7	31.4	141,000	138,000
Crook.....	3,600	(D)	2,900	(D)	26.6	(D)	77,000	(D)
Johnson.....	(D)	(D)	(D)	(D)	(D)	(D)	(D)	(D)
Sheridan.....	(D)	1,000	(D)	300	(D)	40.3	(D)	12,100
Weston.....	(D)	(D)	(D)	(D)	(D)	(D)	(D)	(D)
Other Counties <sup>1</sup> .....	2,400	5,900	1,200	4,900	38.3	31.0	46,000	151,900
<b>Northeast.....</b>	<b>11,500</b>	<b>11,800</b>	<b>8,700</b>	<b>9,600</b>	<b>30.3</b>	<b>31.5</b>	<b>264,000</b>	<b>302,000</b>
Converse.....	(D)	(D)	(D)	(D)	(D)	(D)	(D)	(D)
Goshen.....	23,300	24,500	21,500	20,100	47.3	30.6	1,016,000	615,000
Laramie.....	86,700	92,900	77,800	86,700	37.5	33.2	2,919,000	2,877,000
Niobrara.....	(D)	(D)	(D)	(D)	(D)	(D)	(D)	(D)
Platte.....	12,500	10,600	11,500	9,900	30.2	24.0	347,000	238,000
Other Counties <sup>1</sup> .....	4,000	3,500	3,800	2,800	32.1	33.9	122,000	95,000
<b>Southeast.....</b>	<b>126,500</b>	<b>131,500</b>	<b>114,600</b>	<b>119,500</b>	<b>38.4</b>	<b>32.0</b>	<b>4,404,000</b>	<b>3,825,000</b>
<b>Other Districts <sup>2</sup>.....</b>	<b>2,000</b>	<b>1,700</b>	<b>1,700</b>	<b>900</b>	<b>48.2</b>	<b>36.7</b>	<b>82,000</b>	<b>33,000</b>
<b>Wyoming.....</b>	<b>140,000</b>	<b>145,000</b>	<b>125,000</b>	<b>130,000</b>	<b>38.0</b>	<b>32.0</b>	<b>4,750,000</b>	<b>4,160,000</b>

(D) Withheld to avoid disclosing data for individual operations.

<sup>1</sup> Counties with missing data are included in the appropriate district's "Other Counties".

<sup>2</sup> Counties not listed may also be included in "Other Counties or "Other Districts".

### County Estimates: Sugar Beets – Wyoming: 2014 & 2015

District & County	Acres				Harvested Yield		Production	
	Planted		Harvested		Yield		Production	
	2014	2015	2014	2015	2014	2015	2014	2015
	(Acres)	(Acres)	(Acres)	(Acres)	(Tons/Acre)	(Tons/Acre)	(Tons)	(Tons)
Big Horn.....	7,900	8,900	7,600	8,900	28.4	30.0	216,000	267,000
Fremont.....	1,600	1,700	1,600	1,700	21.9	28.8	35,000	49,000
Park.....	10,400	10,600	9,900	10,500	25.7	29.0	254,000	304,000
Washakie.....	6,900	6,500	6,900	6,500	31.9	32.5	220,000	211,000
<b>Northwest.....</b>	<b>26,800</b>	<b>27,700</b>	<b>26,000</b>	<b>27,600</b>	<b>27.9</b>	<b>30.1</b>	<b>725,000</b>	<b>831,000</b>
Goshen.....	1,700	1,600	1,600	1,600	26.5	29.7	42,400	47,500
Laramie.....	300	300	300	300	22.0	28.3	6,600	8,500
Platte.....	2,100	1,700	2,100	1,700	28.6	30.6	60,000	52,000
<b>Southeast.....</b>	<b>4,100</b>	<b>3,600</b>	<b>4,000</b>	<b>3,600</b>	<b>27.3</b>	<b>30.0</b>	<b>109,000</b>	<b>108,000</b>
<b>Wyoming.....</b>	<b>30,900</b>	<b>31,300</b>	<b>30,000</b>	<b>31,200</b>	<b>27.8</b>	<b>30</b>	<b>834,000</b>	<b>939,000</b>

<sup>1</sup> Counties with missing data are included in the appropriate district's "Other Counties".

<sup>2</sup> Counties not listed may also be included in "Other Counties or "Other Districts".

**County Estimates: Alfalfa & Alfalfa Mixtures for Hay, All Cropping Practices – Wyoming: 2014 & 2015**

District & County <sup>2</sup>	Acres Harvested		Harvested Yield		Production	
	2014	2015	2014	2015	2014	2015
	(Acres)	(Acres)	(Tons)	(Tons)	(Tons)	(Tons)
Big Horn .....	24,000	21,000	3.85	3.85	92,000	81,000
Fremont.....	56,000	56,000	3.05	2.80	172,000	158,000
Hot Springs .....	8,500	6,000	2.25	2.40	19,000	14,500
Park.....	23,500	28,000	3.05	3.65	72,000	102,000
Washakie .....	10,000	11,000	3.80	4.05	38,000	44,500
<b>Northwest .....</b>	<b>122,000</b>	<b>122,000</b>	<b>3.20</b>	<b>3.30</b>	<b>393,000</b>	<b>400,000</b>
Campbell.....	34,000	40,000	1.25	0.95	42,000	38,000
Crook .....	58,000	69,000	1.30	1.30	76,000	91,000
Johnson .....	19,000	19,000	2.40	3.35	46,000	64,000
Sheridan.....	45,000	42,000	2.15	2.50	96,000	104,000
Weston.....	19,000	28,000	1.70	1.60	32,000	45,000
<b>Northeast .....</b>	<b>175,000</b>	<b>198,000</b>	<b>1.65</b>	<b>1.75</b>	<b>292,000</b>	<b>342,000</b>
Lincoln.....	26,000	31,000	2.55	2.40	66,700	75,000
Sublette.....	3,000	2,000	2.35	2.25	7,100	4,500
Teton.....	4,000	3,000	2.50	2.50	10,000	7,500
Uinta.....	5,000	6,000	2.25	2.00	11,200	12,000
<b>West .....</b>	<b>38,000</b>	<b>42,000</b>	<b>2.50</b>	<b>2.35</b>	<b>95,000</b>	<b>99,000</b>
Albany .....	(D)	(D)	(D)	(D)	(D)	(D)
Carbon .....	(D)	3,000	(D)	2.15	(D)	6,500
Natrona .....	13,000	13,000	3.15	2.85	41,000	37,000
Sweetwater .....	11,000	(D)	2.65	(D)	29,000	(D)
Other Counties <sup>1</sup> .....	14,000	15,000	2.85	2.85	40,000	42,500
<b>South Central .....</b>	<b>38,000</b>	<b>31,000</b>	<b>2.90</b>	<b>2.75</b>	<b>110,000</b>	<b>86,000</b>
Converse.....	18,000	19,000	3.15	2.75	57,000	52,000
Goshen .....	43,000	52,000	3.35	3.40	144,000	176,000
Laramie .....	15,000	17,000	3.60	3.70	54,000	63,000
Niobrara .....	15,000	17,000	2.40	2.30	36,000	39,000
Platte.....	26,000	32,000	3.60	2.15	93,000	68,000
<b>Southeast.....</b>	<b>117,000</b>	<b>137,000</b>	<b>3.30</b>	<b>2.90</b>	<b>384,000</b>	<b>398,000</b>
<b>Wyoming.....</b>	<b>490,000</b>	<b>530,000</b>	<b>2.60</b>	<b>2.50</b>	<b>1,274,000</b>	<b>1,325,000</b>

(D) Withheld to avoid disclosing data for individual operations.

<sup>1</sup> Counties with missing data are included in the appropriate district's "Other Counties".

<sup>2</sup> Counties not listed may also be included in "Other Counties or "Other Districts".

**County Estimates: Other Hay, All Cropping Practices – Wyoming: 2014 & 2015**

District & County <sup>2</sup>	Acres Harvested		Harvested Yield		Production	
	2014	2015	2014	2015	2014	2015
	(Acres)	(Acres)	(Tons/Acre)	(Tons/Acre)	(Tons)	(Tons)
Big Horn.....	(D)	(D)	(D)	(D)	(D)	(D)
Fremont .....	26,000	25,000	1.65	2.05	42,500	51,000
Hot Springs.....	(D)	(D)	(D)	(D)	(D)	(D)
Park .....	6,000	7,500	2.30	2.45	13,800	18,500
Washakie.....	4,000	3,000	2.40	2.35	9,500	7,000
Other Counties <sup>1</sup> .....	11,000	17,500	1.45	1.25	16,200	21,500
<b>Northwest .....</b>	<b>47,000</b>	<b>53,000</b>	<b>1.75</b>	<b>1.85</b>	<b>82,000</b>	<b>98,000</b>
Campbell.....	(D)	(D)	(D)	(D)	(D)	(D)
Crook .....	24,000	(D)	1.20	(D)	28,900	(D)
Johnson .....	13,500	15,000	2.10	2.20	28,500	33,000
Sheridan .....	23,500	22,000	2.45	1.80	58,000	40,000
Weston.....	(D)	13,000	(D)	1.05	(D)	13,500
Other Counties <sup>1</sup> .....	34,000	49,000	1.10	1.00	37,600	48,500
<b>Northeast .....</b>	<b>95,000</b>	<b>99,000</b>	<b>1.60</b>	<b>1.35</b>	<b>153,000</b>	<b>135,000</b>
Lincoln .....	40,500	45,000	1.60	1.80	65,000	82,000
Sublette.....	76,500	67,000	1.40	1.40	109,000	93,000
Teton.....	8,000	6,000	1.90	2.50	15,000	15,000
Uinta .....	55,000	45,000	1.90	1.90	104,000	85,000
<b>West .....</b>	<b>180,000</b>	<b>163,000</b>	<b>1.65</b>	<b>1.70</b>	<b>293,000</b>	<b>275,000</b>
Albany.....	53,000	47,000	1.65	1.85	88,000	88,000
Carbon .....	70,000	68,000	2.10	2.05	147,000	138,000
Natrona.....	7,500	12,000	2.45	2.70	18,500	32,500
Sweetwater.....	7,500	13,000	2.35	1.80	17,500	23,500
<b>South Central .....</b>	<b>138,000</b>	<b>140,000</b>	<b>1.95</b>	<b>2.00</b>	<b>271,000</b>	<b>282,000</b>
Converse .....	15,000	15,500	1.30	1.70	19,700	26,500
Goshen .....	(D)	(D)	(D)	(D)	(D)	(D)
Laramie.....	27,000	(D)	1.75	(D)	47,500	(D)
Niobrara .....	14,000	9,500	1.40	2.15	19,500	20,500
Platte.....	(D)	(D)	(D)	(D)	(D)	(D)
Other Counties <sup>1</sup> .....	54,000	70,000	1.55	2.20	83,300	153,000
<b>Southeast .....</b>	<b>110,000</b>	<b>95,000</b>	<b>1.55</b>	<b>2.10</b>	<b>170,000</b>	<b>200,000</b>
<b>Wyoming.....</b>	<b>570,000</b>	<b>550,000</b>	<b>1.70</b>	<b>1.80</b>	<b>969,000</b>	<b>990,000</b>

(D) Withheld to avoid disclosing data for individual operations.

<sup>1</sup> Counties with missing data are included in the appropriate district's "Other Counties".

<sup>2</sup> Counties not listed may also be included in "Other Counties or "Other Districts".

**County Estimates: Dry Edible Beans, All Varieties – Wyoming: 2014 & 2015**

District & County <sup>2</sup>	Acres				Harvested Yield		Production	
	Planted		Harvested		2014	2015	2014	2015
	2014	2015	2014	2015				
	(Acres)	(Acres)	(Acres)	(Acres)	(Cwt/Acre)	(Cwt/Acre)	(Cwt)	(Cwt)
Big Horn.....	10,900	8,400	8,900	8,400	2,000	1,830	178,000	154,000
Fremont.....	(D)	1,800	(D)	1,750	(D)	2,350	(D)	41,100
Park.....	9,700	6,500	8,700	6,450	1,560	2,330	136,000	150,000
Other Counties <sup>1</sup> .....	4,600	1,100	4,400	1,100	2,110	2,720	93,000	29,900
<b>Northwest .....</b>	<b>25,200</b>	<b>17,800</b>	<b>22,000</b>	<b>17,700</b>	<b>1,850</b>	<b>2,120</b>	<b>407,000</b>	<b>375,000</b>
<b>Other Districts .....</b>	<b>16,800</b>	<b>14,200</b>	<b>15,600</b>	<b>13,300</b>	<b>2,510</b>	<b>2,540</b>	<b>392,000</b>	<b>338,000</b>
<b>Wyoming.....</b>	<b>42,000</b>	<b>32,000</b>	<b>37,600</b>	<b>31,000</b>	<b>2,130</b>	<b>2,300</b>	<b>799,000</b>	<b>713,000</b>

(D) Withheld to avoid disclosing data for individual operations.

<sup>1</sup> Counties with missing data are included in the appropriate district's "Other Counties."

<sup>2</sup> Counties not listed may also be included in "Other Counties" or "Other Districts".

**County Estimates: Cattle <sup>1</sup> – Wyoming: January 1, 2015-2016**

District & County	All Cattle		Beef Cows	
	2015 (Number)	2016 (Number)	2015 (Number)	2016 (Number)
Big Horn.....	48,500	48,500	25,000	25,500
Fremont.....	81,000	81,000	51,000	52,000
Hot Springs.....	23,000	23,000	14,000	14,000
Park.....	38,000	38,000	(D)	(D)
Washakie.....	25,000	25,500	16,300	16,500
<b>Northwest.....</b>	(D)	(D)	(D)	(D)
Campbell.....	79,000	80,000	51,000	52,000
Crook.....	71,000	72,000	38,000	38,000
Johnson.....	63,000	63,000	42,500	43,000
Sheridan.....	68,000	69,000	39,000	39,500
Weston.....	50,000	51,000	29,000	29,500
<b>Northeast.....</b>	(D)	(D)	(D)	(D)
Lincoln.....	35,500	36,000	21,000	21,500
Sublette.....	69,000	70,000	31,500	32,000
Teton.....	3,000	3,000	1,600	1,700
Uinta.....	37,000	37,000	(D)	(D)
<b>West.....</b>	(D)	(D)	(D)	(D)
Albany.....	68,000	69,000	(D)	(D)
Carbon.....	90,000	91,000	52,000	53,000
Natrona.....	51,000	51,000	39,000	39,500
Sweetwater.....	24,000	23,500	11,100	11,300
<b>South Central.....</b>	(D)	(D)	(D)	(D)
Converse.....	59,000	59,000	32,500	33,000
Goshen.....	110,000	110,000	34,500	35,000
Laramie.....	83,000	84,000	(D)	(D)
Niobrara.....	46,000	46,500	(D)	(D)
Platte.....	78,000	79,000	(D)	(D)
<b>Southeast.....</b>	(D)	(D)	(D)	(D)
<b>Other Counties.....</b>	-	-	165,000	167,000
<b>Wyoming.....</b>	<b>1,300,000</b>	<b>1,310,000</b>	<b>694,000</b>	<b>704,000</b>

- Represents zero.

(D) Withheld to avoid disclosing data for individual operations.

<sup>1</sup> Counties with missing data are included in "Other Counties".

**County Estimates: Sheep – Wyoming: January 1, 2015 & 2016 <sup>1</sup>**

District & County	All Sheep & Lambs 2015 (Head)	All Sheep & Lambs 2016 (Head)
Big Horn .....	12,900	15,400
Fremont.....	17,800	17,000
Hot Springs .....	4,300	3,800
Park.....	8,300	11,000
Washakie .....	24,000	24,000
<b>Northwest .....</b>	(D)	(D)
Campbell.....	27,000	27,500
Crook .....	11,300	11,400
Johnson .....	25,500	28,000
Sheridan.....	3,400	3,600
Weston.....	2,400	2,200
<b>Northeast .....</b>	(D)	(D)
Lincoln.....	35,500	27,500
Sublette.....	(D)	(D)
Teton.....	(D)	(D)
Uinta.....	35,000	38,000
<b>West .....</b>	(D)	(D)
Albany .....	2,600	2,700
Carbon .....	8,200	10,300
Natrona .....	28,000	25,500
Sweetwater .....	(D)	(D)
<b>South Central .....</b>	(D)	(D)
Converse.....	57,000	57,000
Goshen .....	1,700	1,400
Laramie .....	18,600	28,000
Niobrara .....	3,600	4,200
Platte.....	400	400
<b>Southeast.....</b>	(D)	(D)
<b>Other Counties <sup>1</sup> .....</b>	17,500	16,100
<b>Wyoming.....</b>	<b>345,000</b>	<b>355,000</b>

(D) Withheld to avoid disclosing data for individual operations.

<sup>1</sup> Counties with undisclosed data are included in "Other Counties".

**County Estimates: Cash Rent Per Acre <sup>1</sup> – Wyoming: 2014 & 2016**

District & County	Rented for Cash <sup>2 3 4</sup>					
	Irrigated Cropland		Non-Irrigated Cropland		Pastureland	
	2014	2016	2014	2016	2014	2016
	(Dollars/Acre)	(Dollars/Acre)	(Dollars/Acre)	(Dollars/Acre)	(Dollars/Acre)	(Dollars/Acre)
Big Horn.....	100.00	104.00	19.00	20.50	5.80	6.80
Fremont .....	83.00	79.50	13.50	11.50	5.80	6.70
Hot Springs.....	(D)	73.00	(D)	(D)	5.10	7.60
Park .....	95.00	94.00	(D)	(D)	5.50	7.50
Washakie.....	(D)	129.00	(D)	(D)	5.10	5.00
Other Counties .....	113.00	--	17.00	10.50	--	--
<b>Northwest .....</b>	<b>95.00</b>	<b>99.50</b>	<b>15.00</b>	<b>13.50</b>	<b>5.40</b>	<b>6.80</b>
Campbell.....	(D)	(D)	(D)	(D)	4.30	4.20
Crook .....	(D)	(D)	(D)	13.50	5.40	6.70
Johnson .....	80.50	69.50	(D)	(D)	4.50	4.90
Sheridan .....	84.00	78.00	(D)	(D)	(D)	6.20
Weston.....	(D)	(D)	(D)	(D)	(D)	4.40
Other Counties .....	79.50	73.50	12.50	11.50	5.00	--
<b>Northeast .....</b>	<b>82.00</b>	<b>73.50</b>	<b>12.50</b>	<b>12.50</b>	<b>4.80</b>	<b>5.60</b>
Lincoln .....	65.50	67.50	16.00	18.50	6.70	7.70
Sublette.....	81.00	76.00	(D)	16.50	(D)	8.10
Teton.....	(D)	(D)	(D)	15.50	(D)	--
Uinta .....	(D)	(D)	(D)	22.50	6.80	5.70
Other Counties .....	77.50	73.00	13.50	--	7.80	--
<b>West .....</b>	<b>74.00</b>	<b>71.00</b>	<b>14.50</b>	<b>18.50</b>	<b>6.90</b>	<b>6.90</b>
Albany.....	74.00	68.50	(D)	(D)	5.10	5.80
Carbon .....	69.00	95.00	(D)	(D)	4.70	4.10
Natrona.....	78.50	69.50	(D)	(D)	4.90	3.80
Sweetwater.....	64.50	96.50	(D)	(D)	5.20	5.00
Other Counties .....	--	--	12.50	13.50	--	--
<b>South Central .....</b>	<b>70.00</b>	<b>88.00</b>	<b>12.50</b>	<b>13.50</b>	<b>4.90</b>	<b>4.20</b>
Converse .....	90.00	(D)	(D)	(D)	4.20	4.10
Goshen .....	117.00	112.00	13.00	12.00	5.20	5.30
Laramie.....	106.00	115.00	20.50	20.00	5.30	5.40
Niobrara.....	100.00	(D)	(D)	(D)	5.40	5.10
Platte.....	89.00	105.00	(D)	(D)	5.30	5.10
Other Counties .....	--	103.00	13.50	15.50	--	--
<b>Southeast .....</b>	<b>102.00</b>	<b>109.00</b>	<b>18.00</b>	<b>16.50</b>	<b>5.10</b>	<b>5.00</b>
<b>Wyoming.....</b>	<b>91.00</b>	<b>93.00</b>	<b>14.00</b>	<b>14.50</b>	<b>5.00</b>	<b>5.30</b>

(D) Withheld to avoid disclosing data for individual operations.

<sup>1</sup> Cash Rents estimated every other year

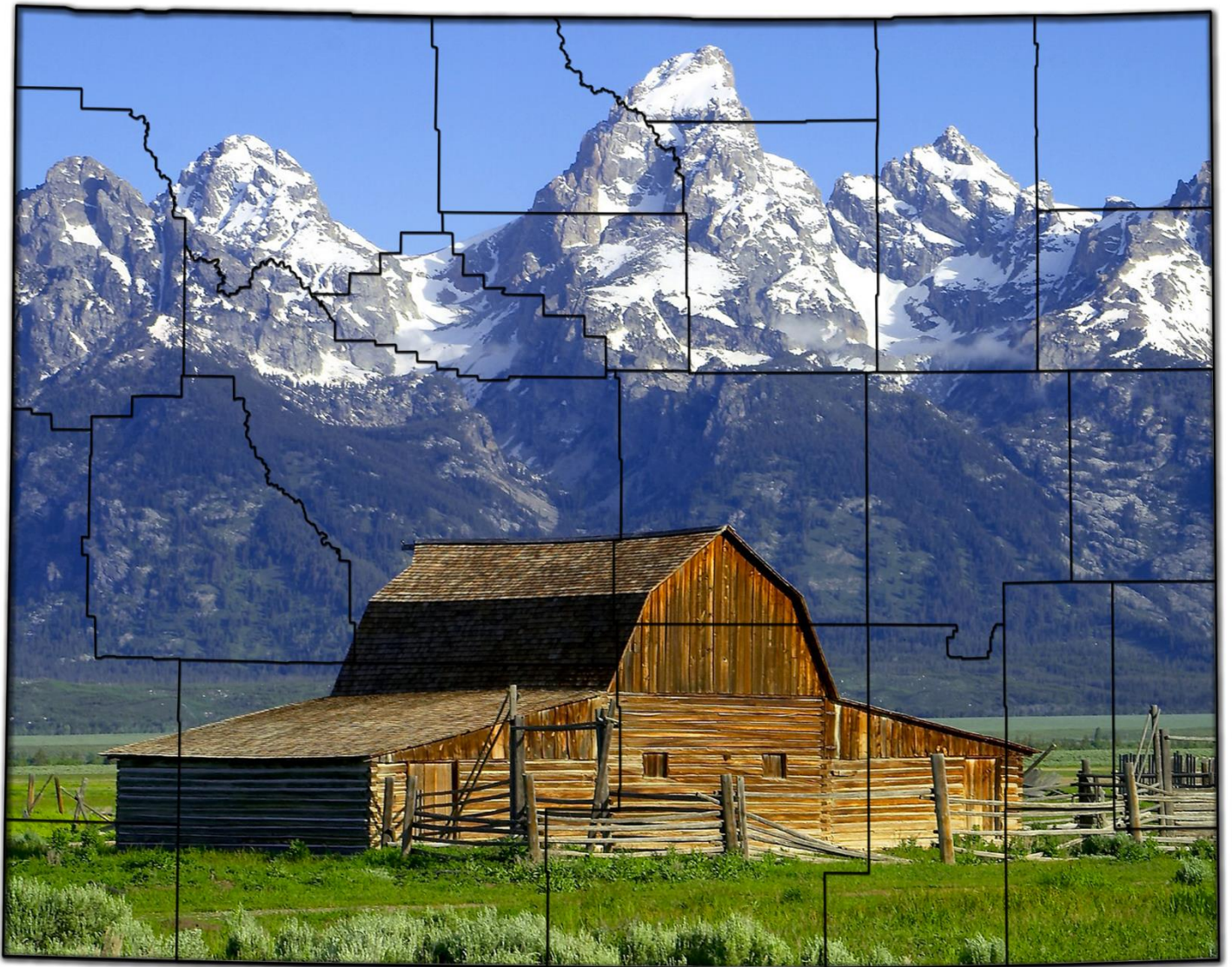
<sup>2</sup> Counties with missing data are included in the appropriate district's "Other Counties".

<sup>3</sup> Districts with missing totals are included in "Other Districts"

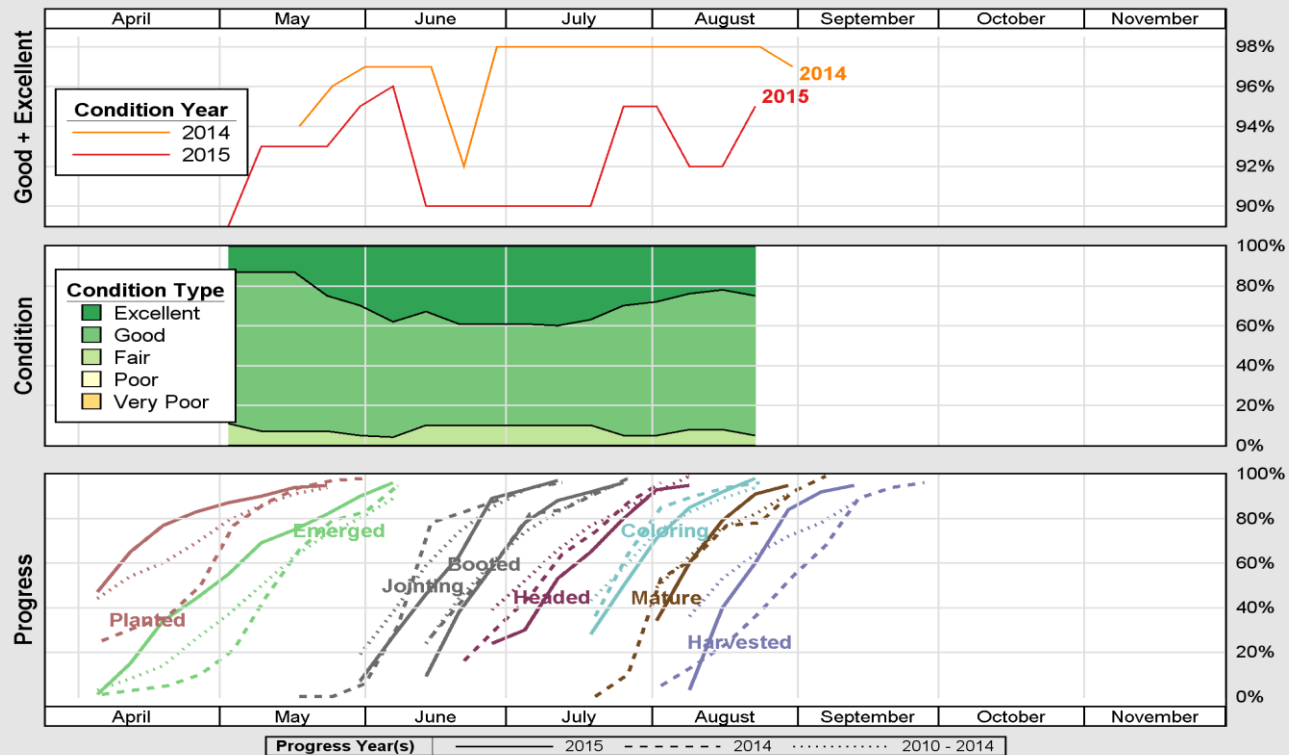
<sup>4</sup> Counties not listed may also be included in "Other Counties or "Other Districts".

-- = Zero

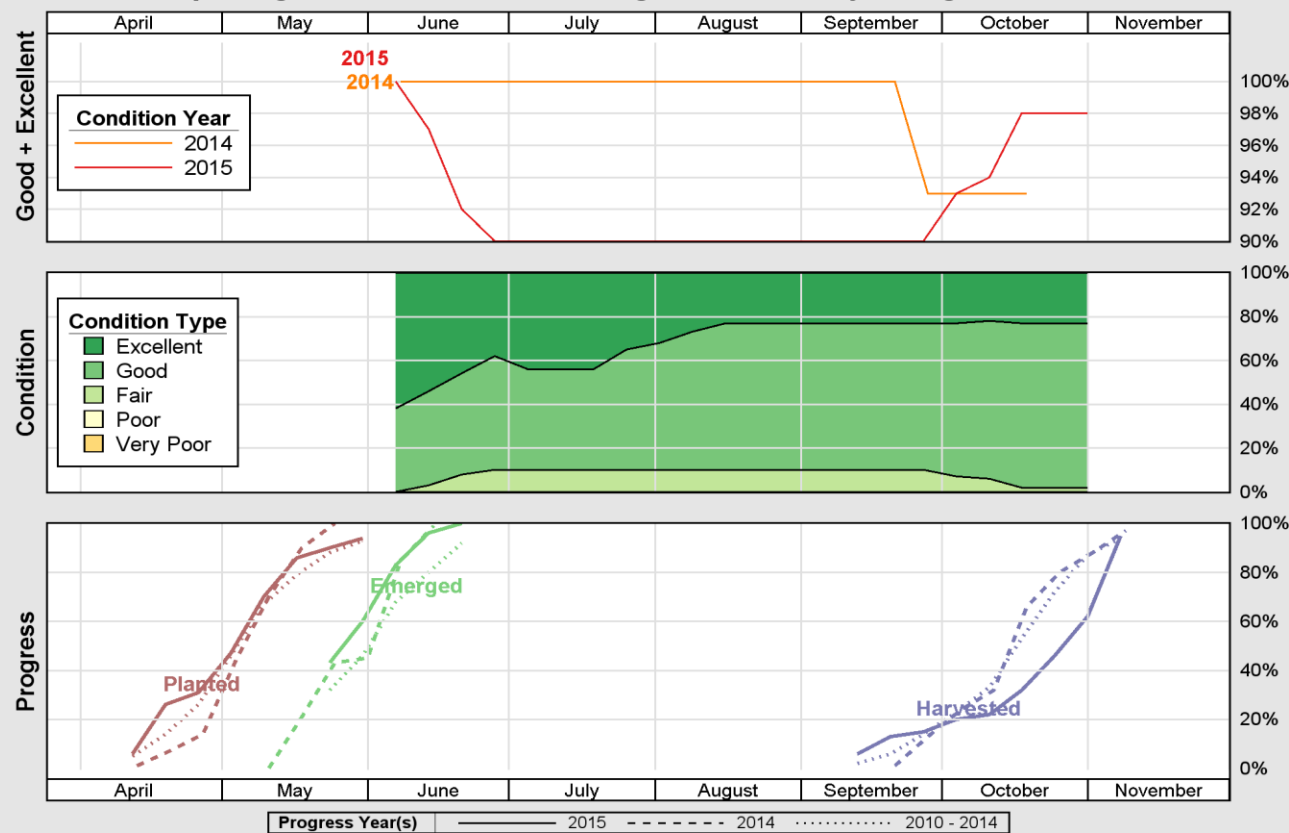
# Crop Progress and Condition Reports



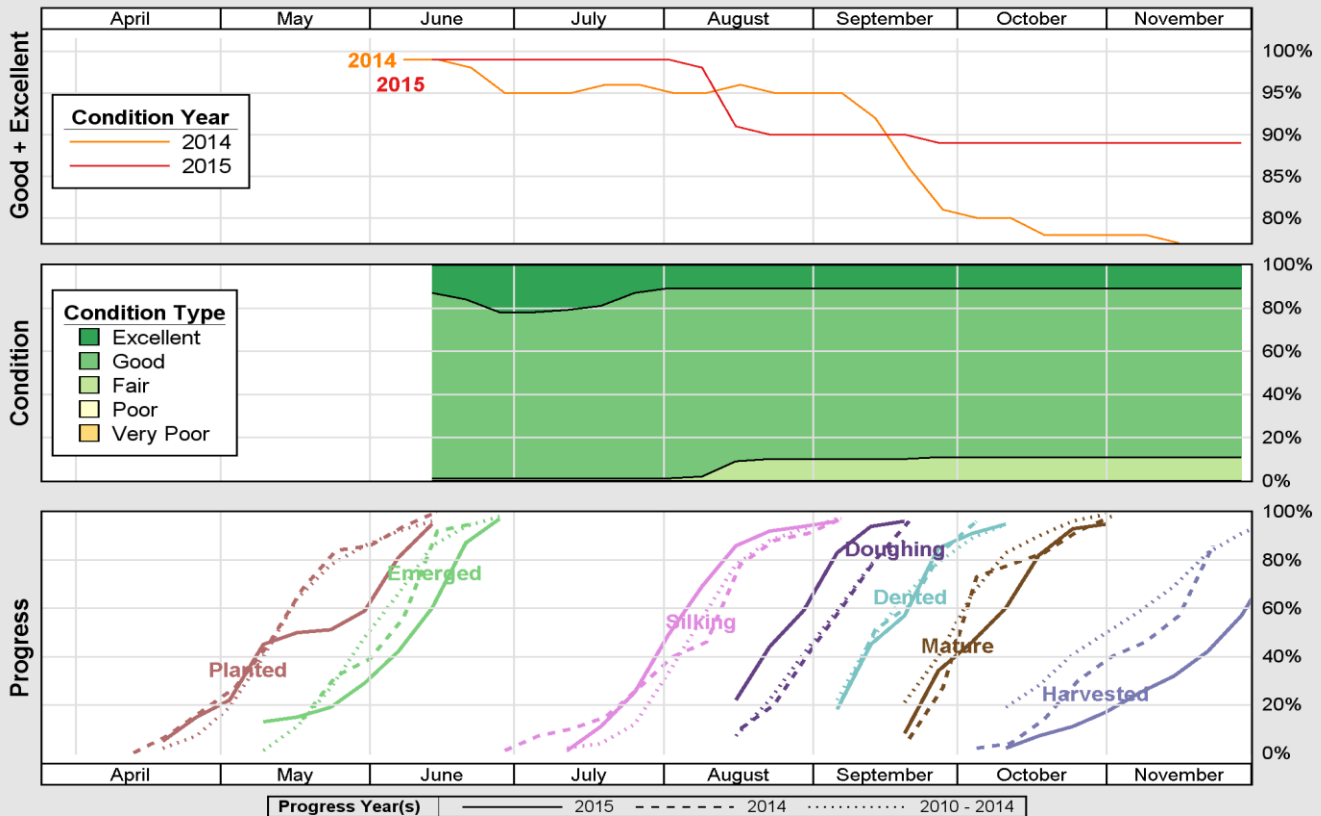




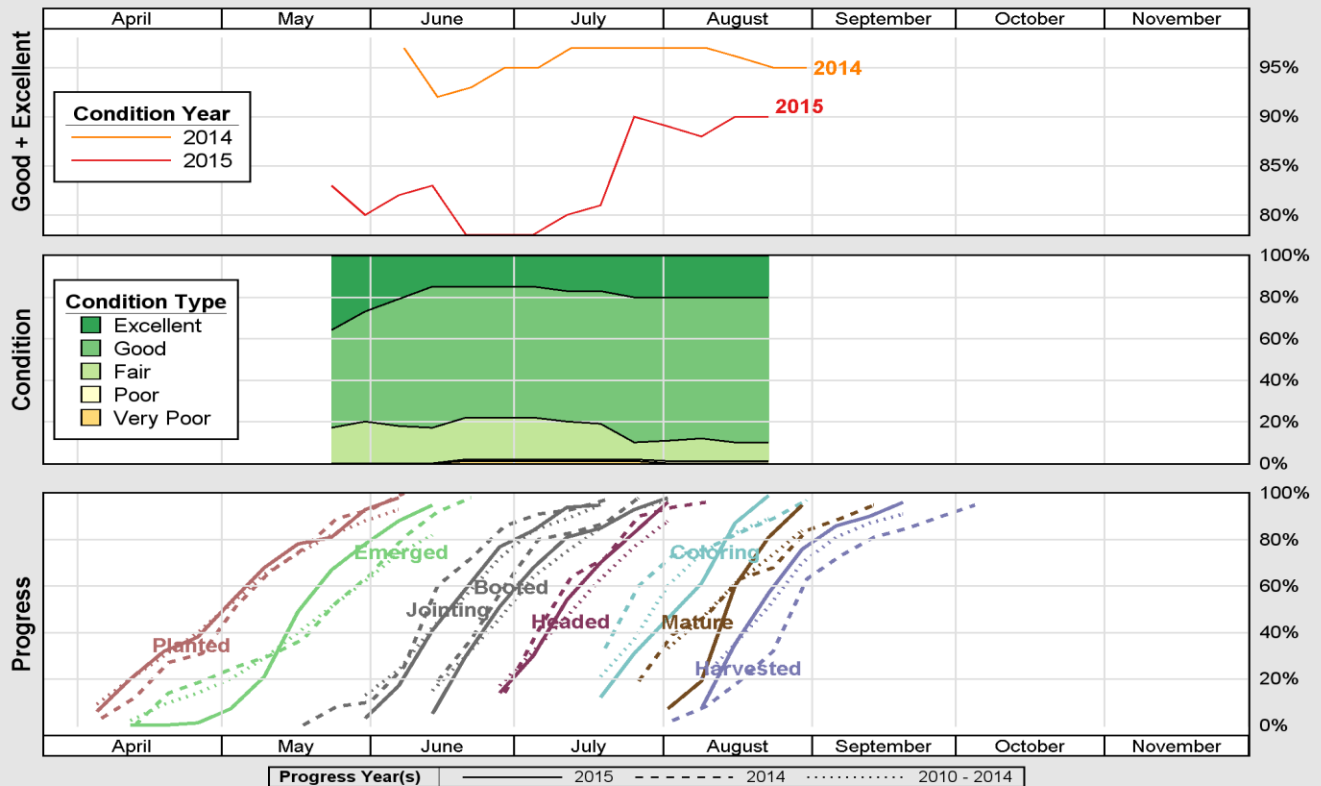
Source: National Agricultural Statistics Service (NASS), Crop Progress Report



Source: National Agricultural Statistics Service (NASS), Crop Progress Report

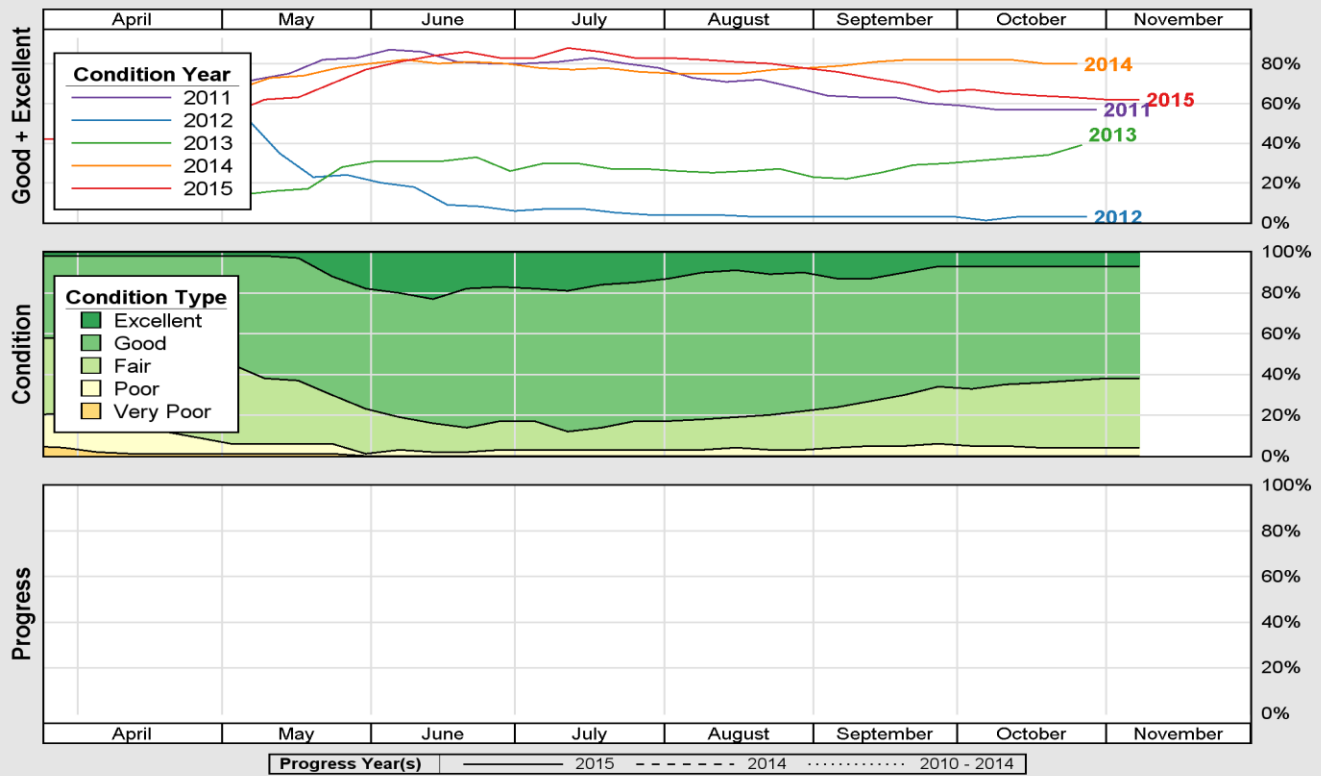


Source: National Agricultural Statistics Service (NASS), Crop Progress Report



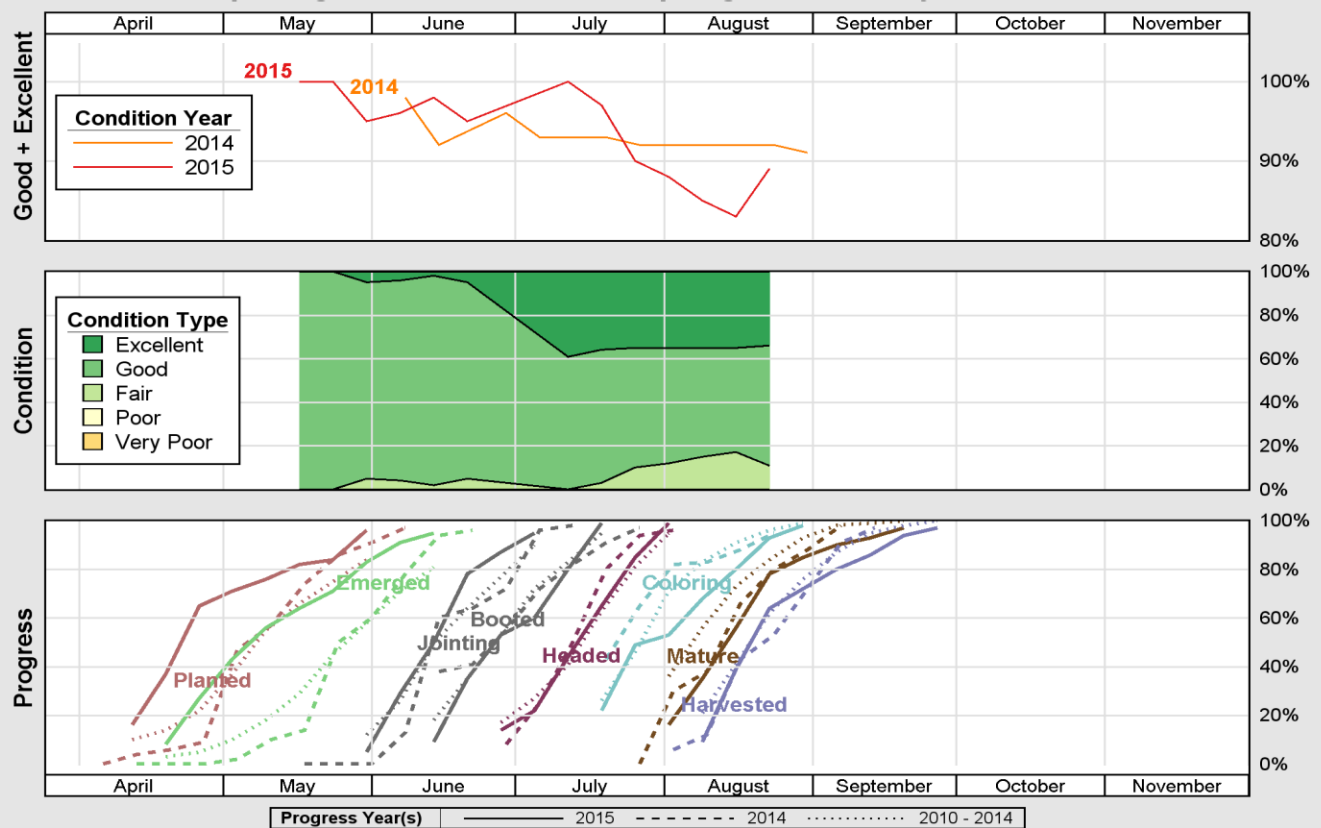
Source: National Agricultural Statistics Service (NASS), Crop Progress Report

### USDA Crop Progress and Condition: Pasture and Range in Wyoming, 2011-2015 NASS



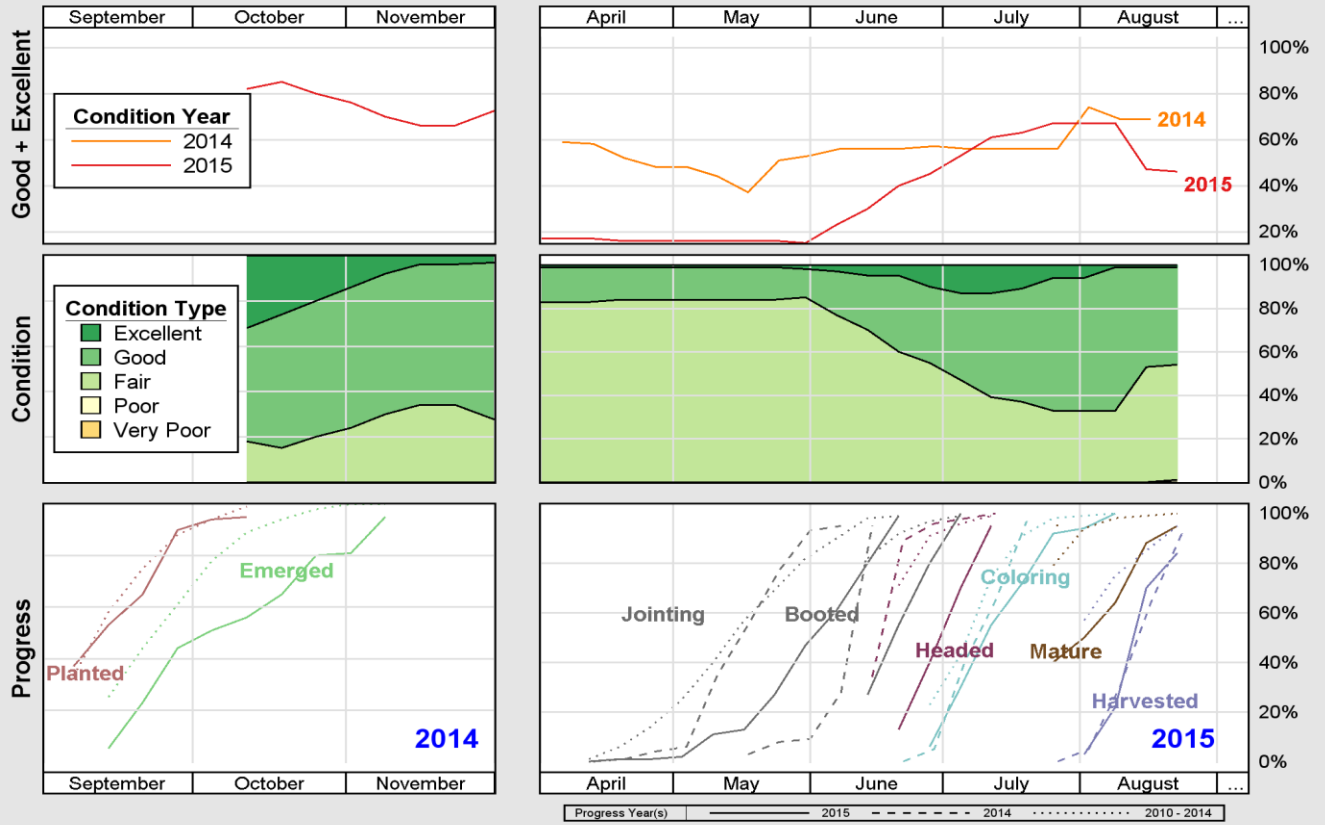
Source: National Agricultural Statistics Service (NASS), Crop Progress Report

### USDA Crop Progress and Condition: Spring Wheat in Wyoming, 2014-2015 NASS



Source: National Agricultural Statistics Service (NASS), Crop Progress Report

**USDA Crop Progress and Condition: Winter Wheat in Wyoming, 2014-2015 NASS**



Source: National Agricultural Statistics Service (NASS), Crop Progress Report

## National Agricultural Statistics Service (NASS) Reports and Data

The NASS Internet homepage provides easy access to the wide range of reports, data and general information published throughout the year. All data in this bulletin is published at an earlier date and can be found most quickly via the Internet.

**NASS Homepage – <http://www.nass.usda.gov>**

**Wyoming Homepage – [http://www.nass.usda.gov/Statistics\\_by\\_State/Wyoming/index.php](http://www.nass.usda.gov/Statistics_by_State/Wyoming/index.php)**

Through a cooperative agreement with Cornell University, the Albert R. Mann Library distributes NASS, Economic Research Service (ERS), and World Agricultural Outlook Board (WAOB) periodicals and data files via the USDA Economics and Statistics System on a web server. Over 500 NASS reports annually are available free of charge. All NASS reports along with WAOB's World Agricultural Supply and Demand Estimates (WASDE) are available electronically seconds after release.

A calendar of scheduled releases is available from the NASS Homepage by clicking on **Publications**. The next screen is the Reports Calendar where you can choose the year and month of interest.

### Free E-Mail Subscriptions to NASS Reports

When a current report is released, it can be sent free of charge via e-mail to the list of subscribers for that report. From the NASS homepage, select **Publications**, then follow the instructions under **Receive Reports by Email**. The four report options available in Wyoming are:

- Wyoming All Reports
- Wyoming Crop-Weather
- Wyoming Crops and Livestock
- Wyoming Miscellaneous

**There is no charge for e-mail subscriptions via Internet.** You will receive a confirmation message to your email address you provide. You must verify that you subscribed to the releases before you start receiving the releases in your inbox. You may unsubscribe at any time by going to the **Subscription Page** and unchecking the reports you wish to discontinue.

### Agricultural Statistics Data Base (Quick Stats)

Published **U.S., State, and County** information is also available in an online database **FREE OF CHARGE**. The database allows custom extracts based on commodity, year, State, and other selection criteria and produces an output file compatible for updating databases and spreadsheets for selected commodities. The database can be accessed from the NASS homepage then selecting **Data and Statistics**. From there you can retrieve National, State, or County level data. The Census of Agriculture is also available in Quick Stats. The database allows custom extracts based on commodity, year, selected counties within a State, or all counties in one or more States. The county data include totals for the Agricultural Statistics Districts (county groupings) and the State. Video tutorials and other information can be found by selecting **Help**.

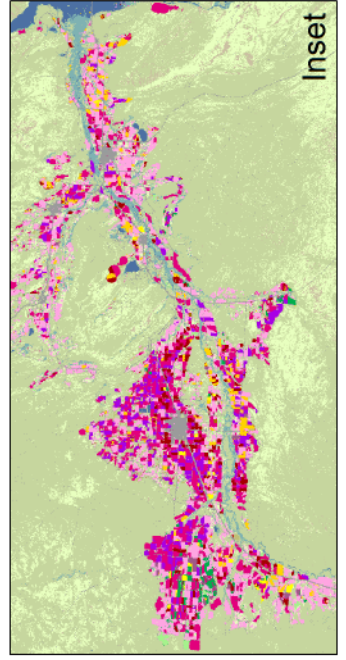
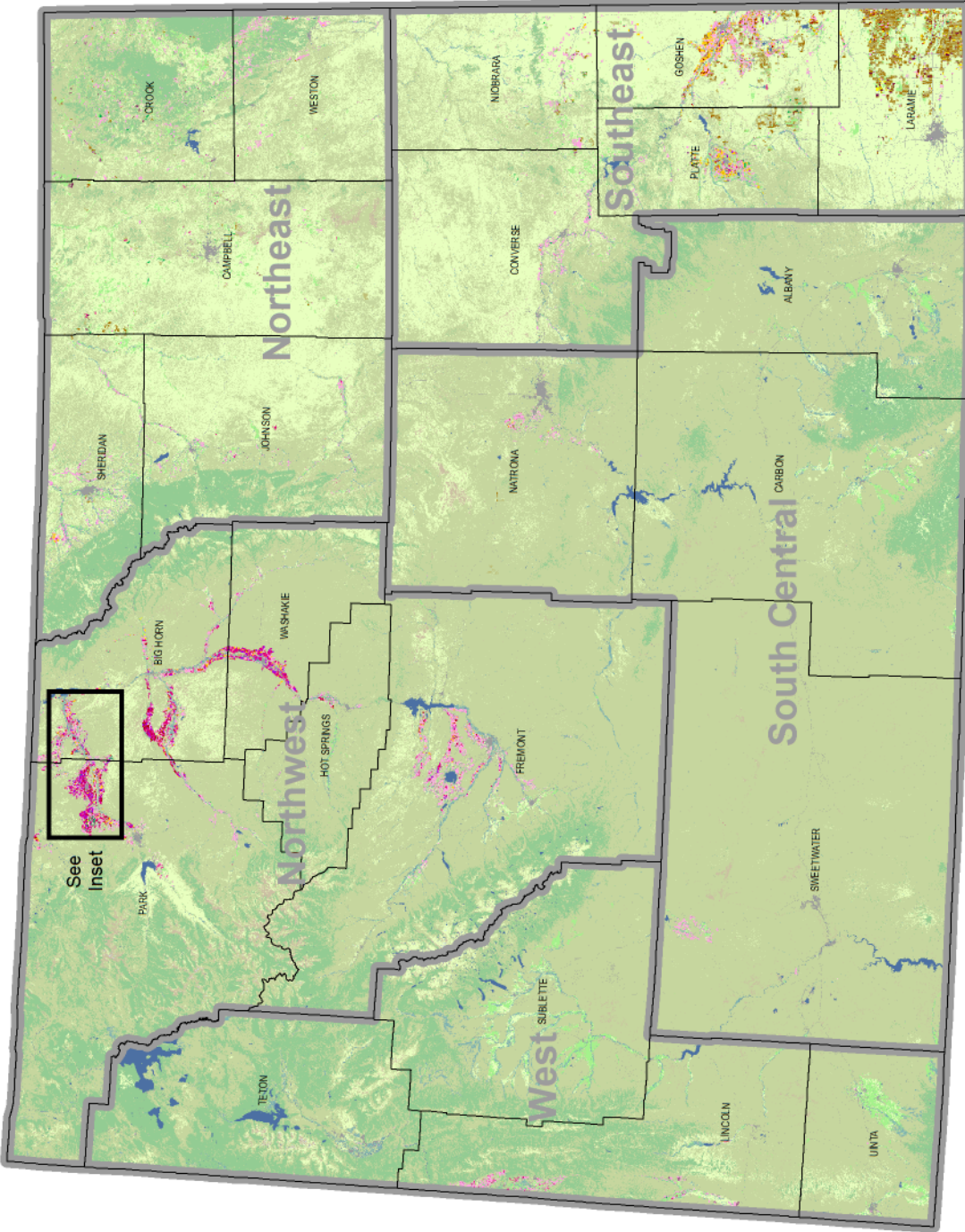
## REPORTS ISSUED DURING THE YEAR 1/ WYOMING FIELD OFFICE, USDA NASS

	<u>Frequency</u>	<u>Approximate Date of Publication</u>
<b>General Reports:</b>		
Crop Weather	Weekly	April-October (Mondays)
"Wyoming Agricultural Statistics" - Annual Summary	Annual	August
<b>Report Dates for Crops:</b>		
Winter Wheat Seedings	Annual	January (9th-12th)
Prospective Plantings	Annual	March (28th-31st)
Acreage Planted	Annual	June (28th-30th)
Crop Production Forecasts	Monthly	May-November (9th-12th)
Dry Edible Bean Acreage by Class	Annual	August (9th-12th)
Crop Production Annual	Annual	January (9th-12th)
Crop Values	Annual	February (20th-25th)
Winter Wheat Varieties	Annual	February
Hay Stocks	Semi-Annual	January, May (9th-12th)
<b>Report Dates for Livestock, Dairy, Poultry, and Livestock Products:</b>		
Cattle Inventory and Calf Crop	Semi-Annual	January or February (5th Friday of year)
Sheep Inventory and Lamb Crop	Annual	January or February (5th Friday of year)
Sheep Shorn and Wool Production	Annual	January or February (5th Friday of year)
Sheep and Lamb Death Loss	Annual	February
Hog Inventory and Pig Crop	Annual	December
Livestock Slaughter	Monthly	20th-26th
Meat Animals - Production, Disposition, and Income	Annual	April (26th-30th)
Bee Colonies and Honey Production	Annual	March (26th-30th)
<b>County Estimates:</b>		
Wheat and Barley	Annual	December
Corn	Annual	February
Hay - All, Alfalfa, and Other	Annual	April
Sugarbeets	Annual	July
Dry Beans	Annual	April
Livestock - Cattle and Breeding Sheep	Annual	April
<b>Prices and Miscellaneous:</b>		
Farm Labor	Semi-Annual	May and November (15th-21st)
Agricultural Prices	Monthly	28th-31st
Number of Farms and Land in Farms	Annual	February (10th-19th)
Farm Production Expenditures	Annual	August
Agricultural Land Values	Annual	August

1/ Same day news releases are issued for some reports. Separate reports funded by the Wyoming Business Council are also printed for Sheep Loss and Winter Wheat Varieties. The annual bulletin, "Wyoming Agricultural Statistics", is a summary of all data for the previous year. All reports are available on the Internet at: [www.nass.usda.gov/wy](http://www.nass.usda.gov/wy)



# 2015 Wyoming Cropland Data Layer



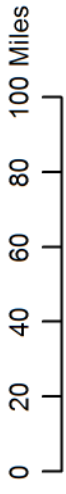
## Land Cover Categories (by decreasing acreage)

### AGRICULTURE

- Grassland/Pasture
- Other Hay/Non Alfalfa
- Alfalfa
- Fallow/Idle Cropland
- Winter Wheat
- Barley
- Corn
- Sugarbeets
- Dry Beans
- Other Crops
- Millet
- Oats
- Sunflower

### NON-AGRICULTURE

- Shrubland
- Forest
- Wetlands
- Barren
- Developed
- Water
- Perennial Ice/Snow
- County Boundary
- ASB Boundary



Produced by: U. S. Department of Agriculture, National Agricultural Statistics Service, Research and Development Division, Spatial Analysis Research Section.  
 Cropland Data Layer CropScape Website: <http://massgeodata.gmu.edu/CropScape/>  
 Data Sources: Landsat 8 OLI/TIRS, Deimos-1\*, UK-DMC2\* (\*Courtesy of USDA Foreign Agricultural Service).  
 Image Processing: Rulequest See5 and ERDAS Imagine.  
 Ground Truth: The Farm Service Agency Common Land Unit for crops classes; 2011 National Land Cover Dataset (NLCD) for non-agricultural classes.  
 Ancillary Data: NLCD Impervious Surface, NLCD Forest Canopy, National Elevation Dataset, NASS Crop Mask.  
 Disclaimer: Small area crops may be less accurate, see CropScape metadata.  
 Cartographic Generalization: Smaller categories combined with larger categories.  
 Projection: UTM zone 13, WGS84 datum.  
 Map Production: ESRI ArcGIS 10.3.





## LEARN MORE

Visit: [www.nass.usda.gov](http://www.nass.usda.gov)

To gain access to the following features:

- Browse the NASS website for information on surveys, the census and more.
- Quick Stats – Use this easy online tool to find data by agricultural product, geography and date.
- Crop Scape – Use this web portal to get crop-specific geospatial land cover information.
- Sign up for free customized national reports, state reports or news releases via email.
- Follow NASS on Twitter - @usda\_nass.
- Customer Service – For assistance finding data online or to request hard copies, including CDs and DVDs, call toll free: (800) 727-9540 (7:30 a.m. to 4 p.m. ET Mon-Fri) or write to [nass@nass.usda.gov](mailto:nass@nass.usda.gov).
- View our pledge to keep data confidential and secure.