



# New Jersey Department of Education (NJDOE) School Performance Reports 2017-18

**Toms River Regional Schools**  
**March 13, 2019**

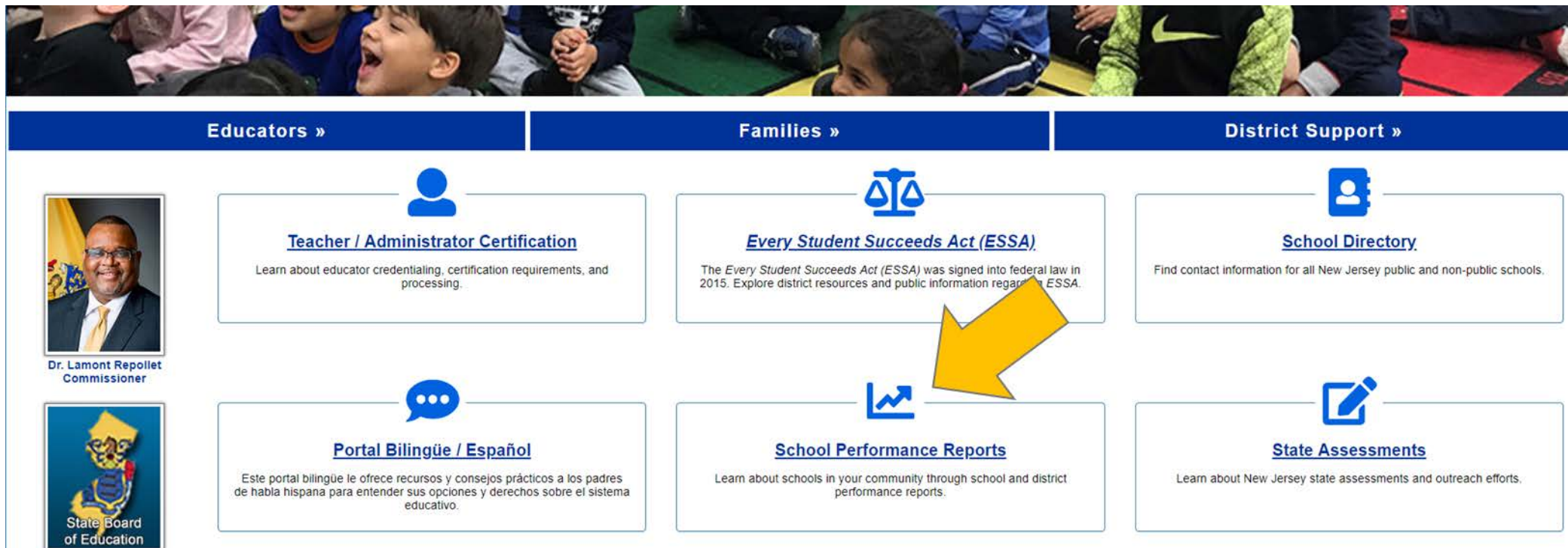


# 2017-18 School Performance Reports







- Federal requirement under *ESSA*
- Broader picture of schools and districts
  - **Detailed School Performance Reports** for each school and district
  - **One-page Summary Reports** for each school and district
- Continued effort to engage with parents/community

# Where Can You Find the Performance Reports?

You can find the performance reports on the New Jersey Department of Education homepage, [www.nj.gov/education](http://www.nj.gov/education)



The image shows a screenshot of the New Jersey Department of Education homepage navigation menu. At the top, there is a banner image of children in a classroom. Below it, a blue navigation bar contains three main categories: "Educators »", "Families »", and "District Support »". Under "Educators", there is a profile picture of Dr. Lamont Repollet, Commissioner, and a link to "Portal Bilingüe / Español". Under "Families", there are links for "Teacher / Administrator Certification", "Every Student Succeeds Act (ESSA)", and "School Performance Reports". Under "District Support", there are links for "School Directory" and "State Assessments". A large yellow arrow points to the "School Performance Reports" link.

Educators »	Families »	District Support »
 Dr. Lamont Repollet Commissioner	 <b><u>Every Student Succeeds Act (ESSA)</u></b> The <i>Every Student Succeeds Act (ESSA)</i> was signed into federal law in 2015. Explore district resources and public information regarding ESSA.	 <b><u>School Directory</u></b> Find contact information for all New Jersey public and non-public schools.
 <b><u>Portal Bilingüe / Español</u></b> Este portal bilingüe le ofrece recursos y consejos prácticos a los padres de habla hispana para entender sus opciones y derechos sobre el sistema educativo.	 <b><u>School Performance Reports</u></b> Learn about schools in your community through school and district performance reports.	 <b><u>State Assessments</u></b> Learn about New Jersey state assessments and outreach efforts.

# School Performance Reports Homepage

You can also go directly to the School Performance Reports homepage, [www.njschooldata.org](http://www.njschooldata.org).



- [Performance Reports Home Page](#)
- [Resource Documents](#)
- [Reference Guide](#)
- [Summary Report Guide](#)
- [Frequently Asked Questions](#)
- [Videos and Other Resources](#)
- [Data Privacy Rules \(FERPA\)](#)
- [Take our Feedback Survey](#)
- [Download the Data](#)

## New Jersey School Performance Reports

The School Performance Reports reflect the NJDOE's extensive efforts to engage with parents, students, and school communities and share the information that is most valuable in providing a picture of overall school performance. Communities are encouraged to use these reports to learn more, start conversations, and engage.

Search for a school or district below to get started.

Select School Year:  [View report data prior to 2011-2012](#)

Select Report Type:  School  District  State

Select Search Type:  School/District/County Dropdown  School Name  Zip Code

County:

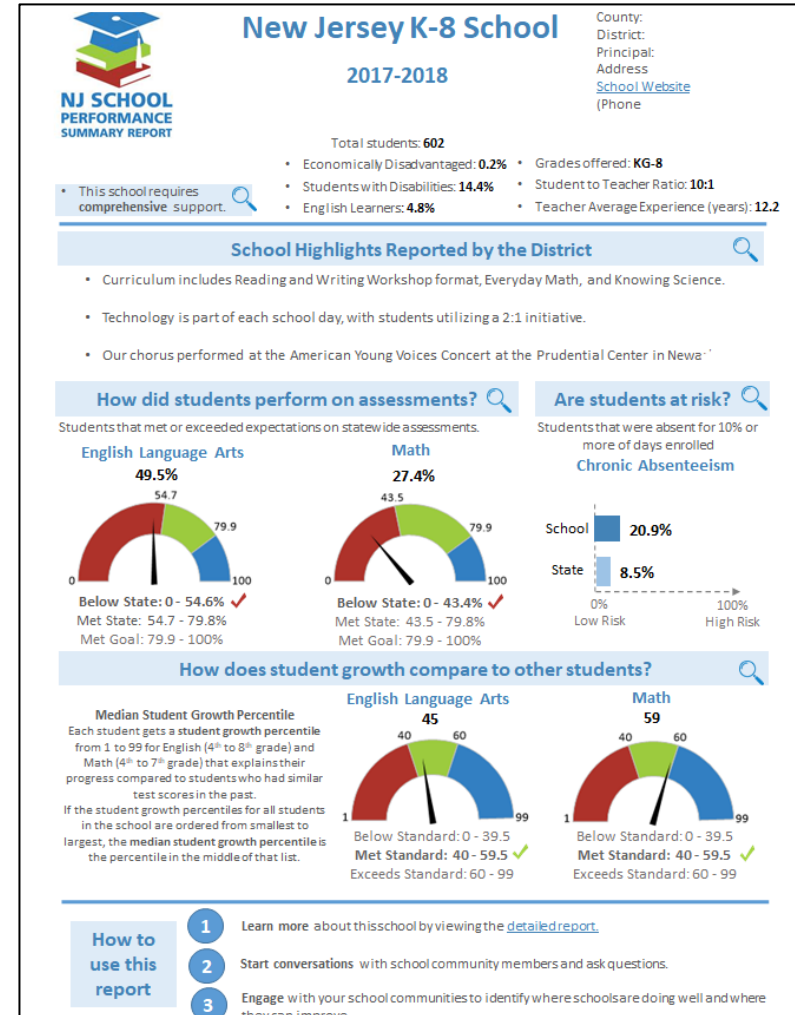
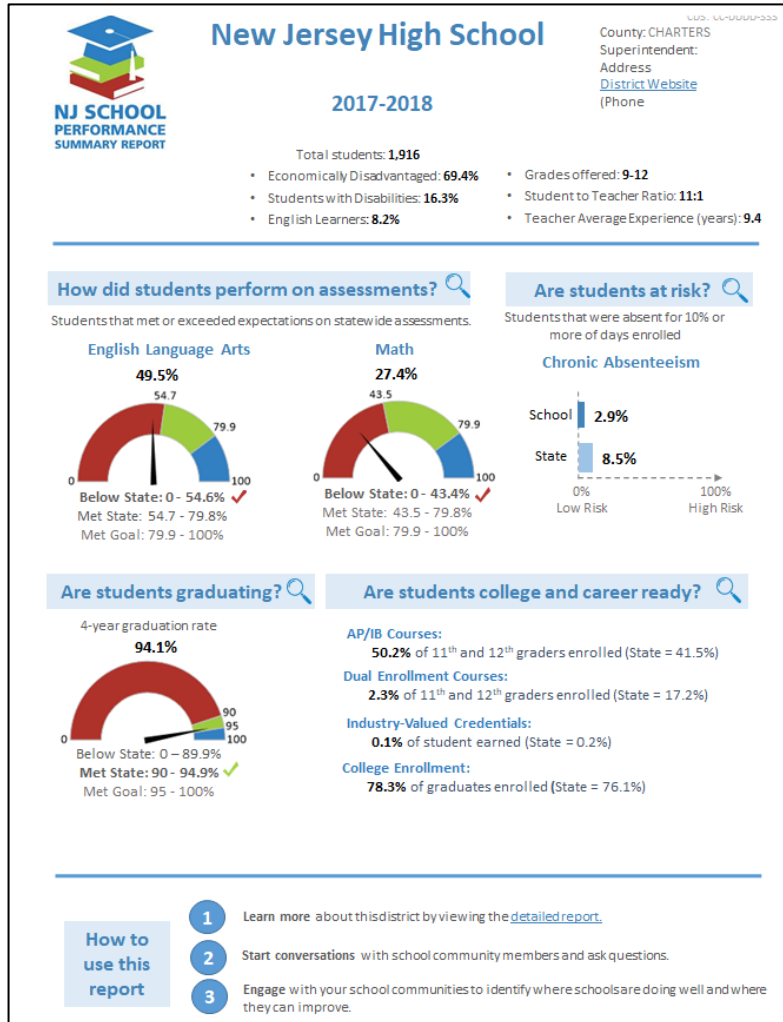
District:

School:

[Search for Reports](#)

[View an alphabetical list of all schools](#)

# Summary Performance Reports



## What Kinds of Information Do the School Performance Reports Include?

The New Jersey School Performance Reports contain **hundreds of data points**:

- ✓ School and district overviews
- ✓ Demographic information
- ✓ Student growth
- ✓ Academic achievement
- ✓ College and career readiness
- ✓ Graduation and post-secondary information
- ✓ School climate and environment
- ✓ Staff information
- ✓ School Accountability
- ✓ School and district narrative information

# New Data Added to the Full Reports

New data elements based on requests received during stakeholder engagement:

- Career and Technical Education (CTE) Program Enrollment
- Dual Enrollment by subject area
- Graduation Pathways
- Progress toward English Language Proficiency
- Teacher and Administrator Demographics
- Harassment, Intimidation, and Bullying (HIB) Incidents by Nature
- Police Notifications
- New Narrative categories: Technology and STEM, Student Safety, Early Childhood Education and Pre-K

# Resources

- District letter shared with parents/guardians
- NJ School Performance Report webpage
  - [www.njschooldata.org](http://www.njschooldata.org)
- Feedback from stakeholders
  - [www.surveymonkey.com/r/VKNTTRC](http://www.surveymonkey.com/r/VKNTTRC)
  - Email: [reportcard@doe.nj.gov](mailto:reportcard@doe.nj.gov)