



# Note Names in the Treble

by Beatrice Wilder

## Contents

Worksheet 1	<b>Music Basics</b> Completing note names inside large pretend notes.
Worksheet 2	<b>Find the Letters</b> Filling in large pretend notes. Supply the missing notes.
Worksheet 3	<b>Tracing C</b> Getting to know where the three Cs are
Worksheet 4	<b>Wherever there's a C you find an ACE</b> Tracing and drawing A C E in different positions on the staff.
Worksheet 5	<b>Tricky Scramble</b> Solving an unusual 'scrambled letters' puzzle.
Worksheet 6	<b>Solve This!</b> Puzzle. Extra notes have been written in to make up a 'missing' phrase.
Worksheet 7	<b>Something Fishy</b> A secret code to decipher.
Worksheet 8	<b>Match Them Up</b> Draw lines between groups of letters and notes.
Worksheet 9	<b>Animal Instinct</b> Crossword - find and fill in the missing letters.
Worksheet 10	<b>Giant X-Word</b> The notes are given as the clues to the crossword. A real teaser.
Worksheet 11	<b>No-Word Search</b> A bit tricky. Find combinations of the letters A to G.
Worksheet 12	<b>Hidden Story</b> A story with letters missing. The clues are given as notes.
Worksheet 13	<b>Crazy - Maze</b> How many notes have paths leading to their letter names?
Worksheet 14	<b>Word Search</b> How many words can you find? Write them as words and as notes.
Worksheet 15	<b>Octaves and Anagrams</b> Re-arrange words and re-write them one octave lower.
Worksheet 16	<b>Word Exchange</b> Re-write words using notes on lines or in spaces as required.
Worksheet 17	<b>Colorama!</b> Following instructions, tracing and colouring specific notes.
Worksheet 18	<b>Scrambled Words</b> Unscramble letters to form words, then fit them with notes or write as notes.
Worksheet 19	<b>Around the World</b> Use note names and scrambled letters to discover names of countries and cities.
Worksheet 20	<b>Quiz</b> Multiple choice. Notes are given. Tick the correct words.
Worksheet 21	<b>The Prize</b> Complete the names of animals and the name of the 'prize' using note names.
Worksheet 22	<b>Competition</b> Two teddies have a collection of letters. How many words can be formed?
Worksheet 23	<b>Secret Code</b> Crack the secret code to solve the multiple choice quiz.
Worksheet 24	<b>Amazing</b> Finding paths through a maze. Use coloured lines to link up words.
Worksheet 25	<b>Information Sheet</b> Names of all the notes used in these worksheets.

Copyright © Beatrice Wilder 2003  
Published in 2003 by **Music Fun**

19 Millyard Lane Katoomba 2780  
P.O. Box 342 Katoomba 2780

Phone: (02) 4782 3073

Email: [info@musicfun.net.au](mailto:info@musicfun.net.au)  
Web: [www.musicfun.net.au](http://www.musicfun.net.au)



# Music Basics

A musical staff with a treble clef. It contains five notes: a half note 'C' on the first line, a blank circle on the first space, a half note 'E' on the second line, a blank circle on the second space, and a half note 'G' on the third line.

Fill in the missing letters.

A musical staff with a treble clef. It contains five notes: a blank circle on the first space, a half note 'F' on the second line, a blank circle on the second space, a half note 'D' on the third line, and a blank circle on the third space.

These are a bit mixed up.

A musical staff with a treble clef. It contains seven notes: a half note 'A' on the first line, a blank circle on the first space, a half note 'B' on the second line, a half note 'D' on the second space, a half note 'F' on the third line, a blank circle on the third space, and a half note 'G' on the fourth line.

A musical staff with a treble clef. It contains seven notes: a half note 'A' on the first line, a half note 'B' on the first space, a blank circle on the second line, a half note 'D' on the second space, a blank circle on the third line, a half note 'F' on the third space, and a half note 'G' on the fourth line.

A musical staff with a treble clef. It contains seven notes: a blank circle on the first space, a half note 'D' on the second line, a half note 'C' on the second space, a blank circle on the third line, a half note 'A' on the third space, a half note 'G' on the fourth line, and a blank circle on the fourth space.

Can you write all the letters in?

A musical staff with a treble clef. It contains ten blank circles on various lines and spaces, intended for the student to write note names.



# Find the Letters

A musical staff with a treble clef. The notes are: C (circled), empty circle, E (circled), empty circle, G (circled), empty circle, B (circled), empty circle, D (circled), empty circle, F (circled), empty circle, and A (circled).

Fill in the missing letters.

A musical staff with a treble clef. It contains four empty circles and three horizontal lines for labeling notes.

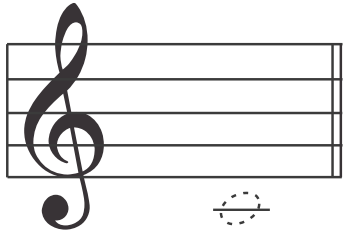
Fill in the missing letters above.

- F
- A
- E
- C
- C
- A
- D
- E
- G
- G

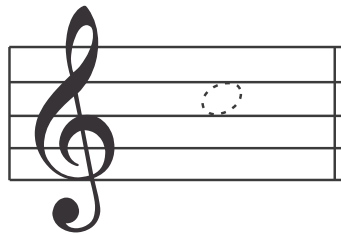
Can you place these notes where they belong? Cross each one out as you use it.



# Tracing C



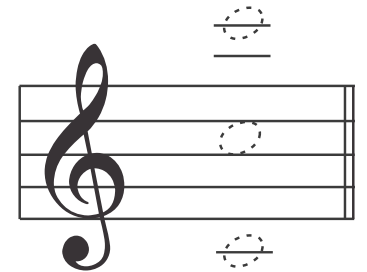
Middle C



C in a Space



Cs on leger lines

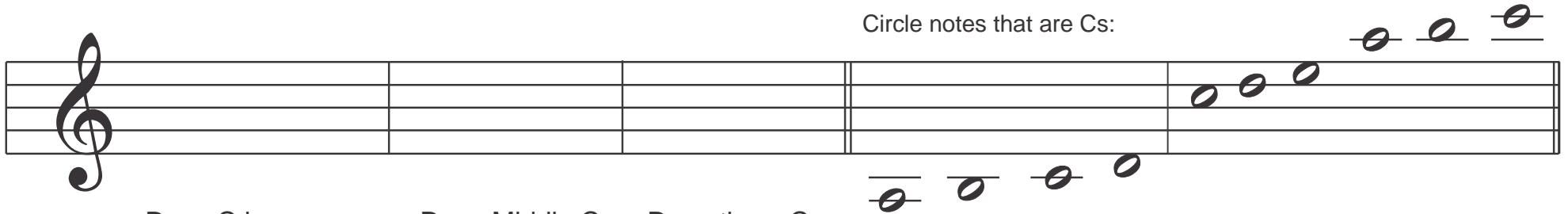


All three Cs

Cross out the note in each set that is NOT a C.



Circle notes that are Cs:



Draw C in a space

Draw Middle C

Draw three Cs



# Wherever there's a C you can find an ACE



Trace the notes to complete these ACEs. Name the notes.

.....

.....

These ACEs are jumbled up. Draw them again with the notes in their correct orders.

Circle the A, the C and the E



# Tricky Scramble

To find the answers, you will need to unscramble the letters. We have left out all the letters from A to G and placed them on the staves to the right. They are in the correct order, so you will only need to add them to the other letters, once you have arranged them correctly.

- Another name for a tune -----
- A piece of music is divided into -----
- A musical sound that frogs make -----
- At the start of our music is a treble -----
- A quarter note is also called a -----
- Music notes are written on a -----
- This word means 'loud' -----
- A group of musicians form an -----
- This word means to play smoothly -----
- A geometric percussion instrument -----
- A deep sounding voice is a -----
- Large member of the violin family -----
- A style of jazz -----
- Brass instrument, shaped like a trumpet -----

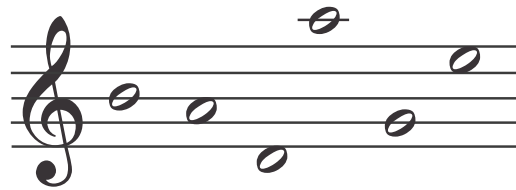
- lyom
- rs
- ork
- l
- troth
- st
- rot
- shortr
- lot
- tirnl
- rotin
- souls
- lixin
- ul

The image shows five musical staves, each with a treble clef. On each staff, several note heads are scattered across the lines and spaces. The notes are placed on the following lines and spaces from top to bottom: Staff 1: G4, A4, B4, C5, D5; Staff 2: E4, F4, G4, A4, B4; Staff 3: C4, D4, E4, F4, G4; Staff 4: A3, B3, C4, D4, E4; Staff 5: F3, G3, A3, B3, C4.



# Solve This!

Check these Notes. Each word has one extra letter. Write the correct words under the notes.  
(All the words are in the middle of the page, in mixed order.)  
Write all the extra letters in the middle. They spell the answer to the riddle.



Baggage

Deed

Badge

Beef

Bagged

Cadge

Fade

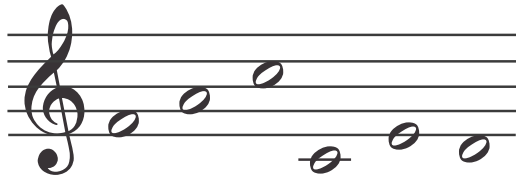
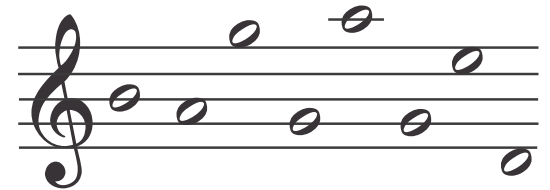
Cafe

Decade

Faced

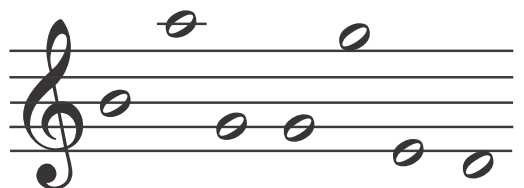
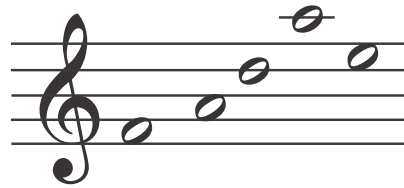
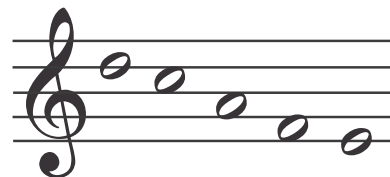
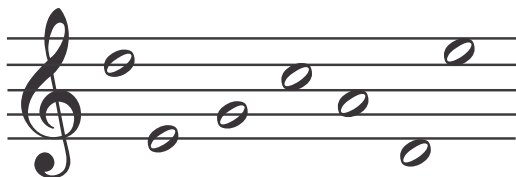
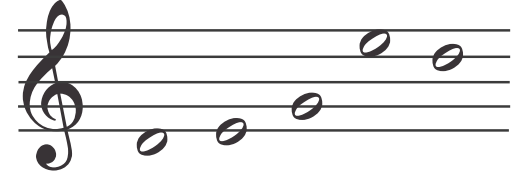
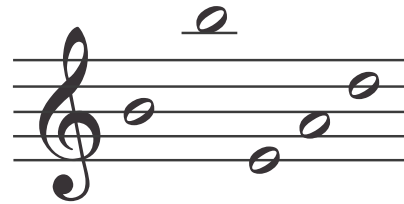
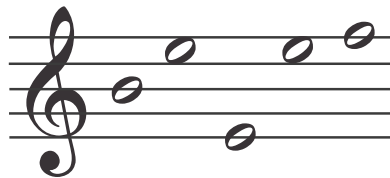
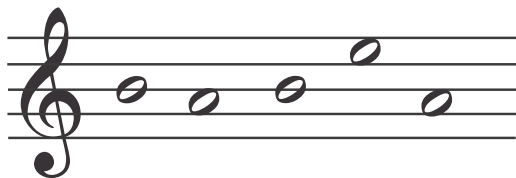
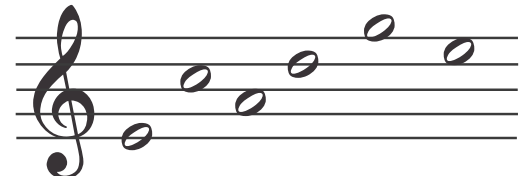
Babe

Bead



What dad found in a nest in the old bird cage in the attic.

- - - - -







# Something Fishy

Each fish has a name. The names are written in code.  
They are also written on the staves.  
See if you can crack the code and name the fishes.

**Secret Code**

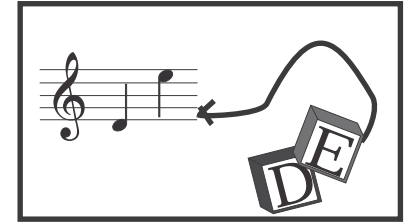
□ □ □ □ □ □ □



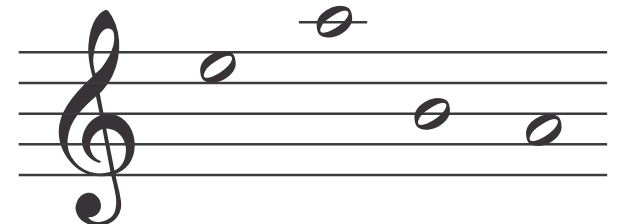
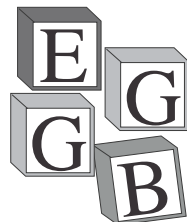
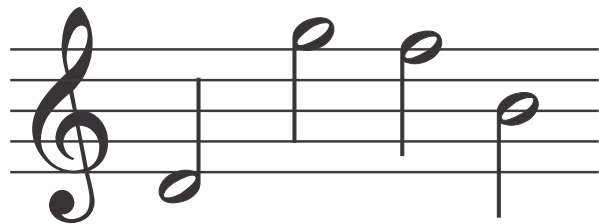
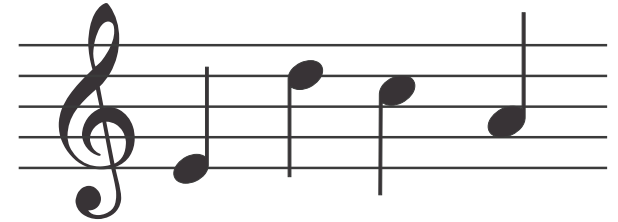
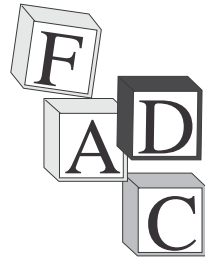
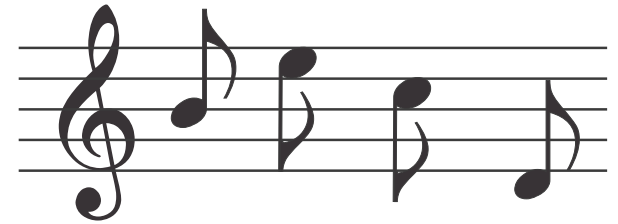
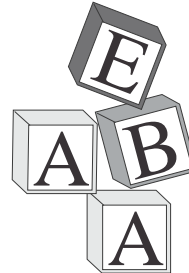
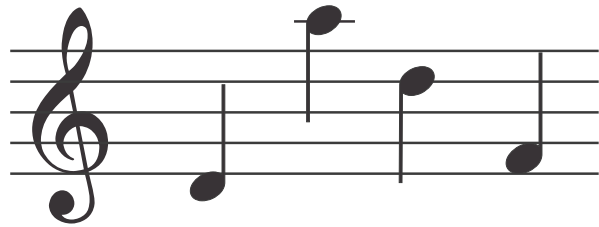
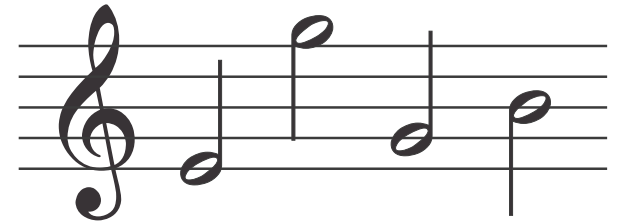
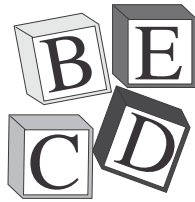
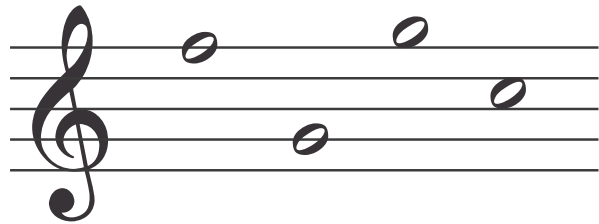

--	--	--	--	--	--	--



# Match Them Up



Use lines to join each group of blocks with a matching group of notes.



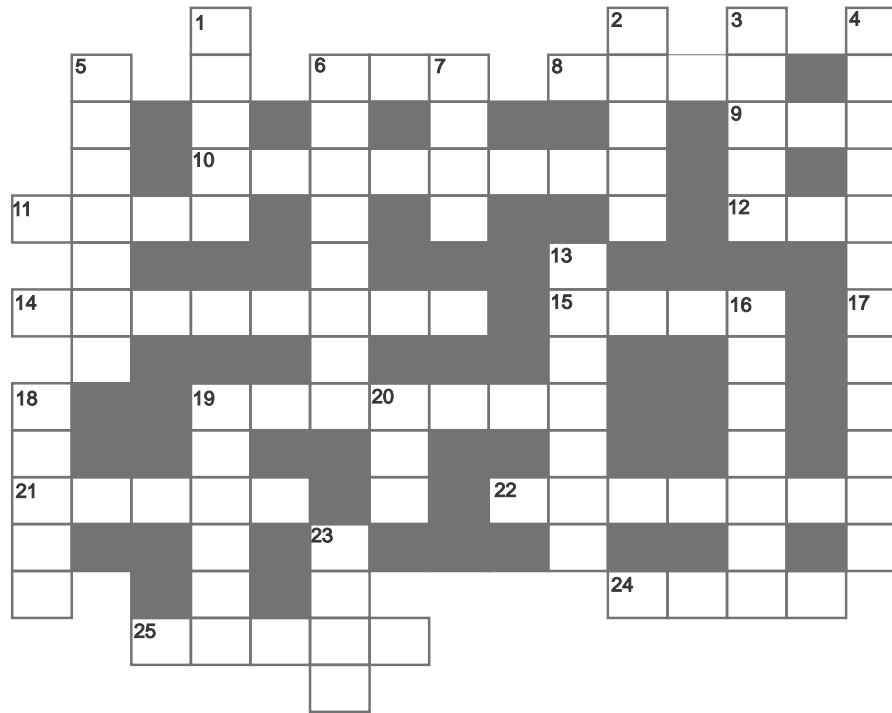


# Animal Instinct

You will need to complete the words for this crossword puzzle by filling in the missing letters using the notes on the staff at the bottom of the page. Use each note only once. Cross out the notes as you use them. The notes left over spell an animal name.

## Across

- 6. \_ o \_
- 8. \_ i s h
- 9. \_ m u
- 10. K \_ n \_ \_ r o o
- 11. M i \_ \_
- 12. P i \_
- 14. \_ l \_ p h \_ n t
- 15. H \_ r \_
- 19. \_ i r \_ \_ \_ \_
- 21. \_ \_ l \_ h
- 22. P \_ n t h \_ r
- 24. H i n \_
- 25. \_ \_ m \_ l

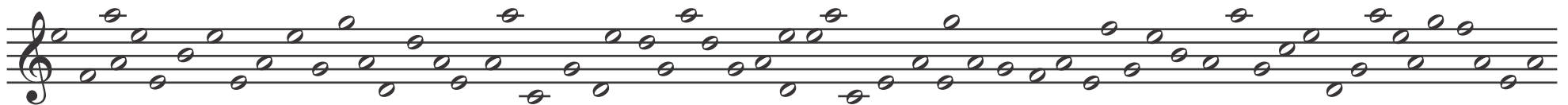


## Down

- 1. S n \_ k \_
- 2. \_ i s o n
- 3. S h \_ \_ p
- 4. \_ n u
- 5. \_ o r i l l \_
- 6. \_ i n o s \_ u r
- 7. \_ o \_ t
- 13. \_ h \_ \_ t \_ h
- 16. \_ o l p h i n
- 17. L i z \_ r \_
- 18. T i \_ \_ r
- 19. \_ o a n n \_
- 20. \_ p \_
- 23. \_ l \_ \_



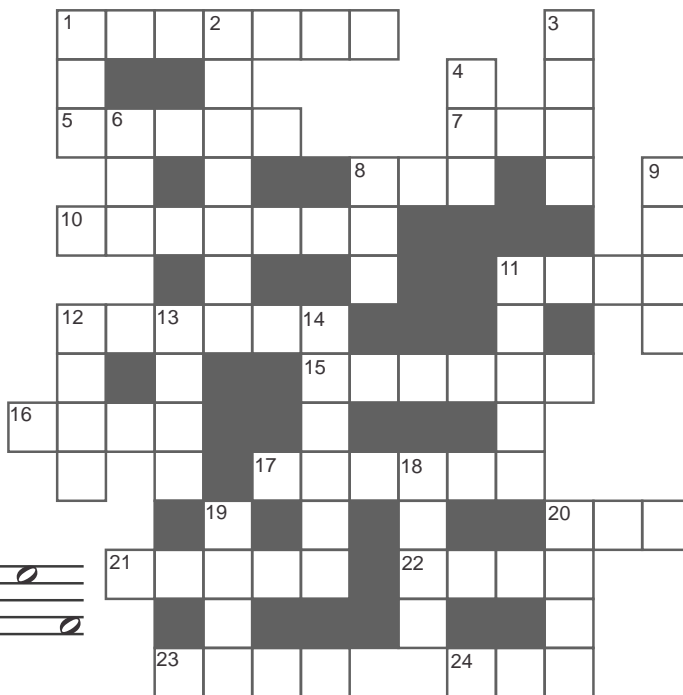
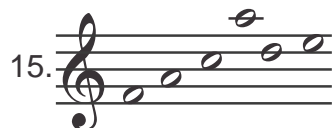
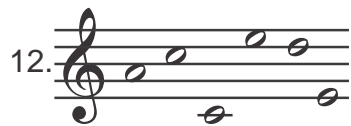
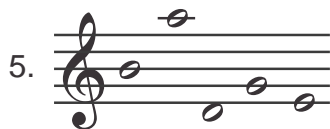
The other animal name is: \_ \_ \_ \_ \_ r



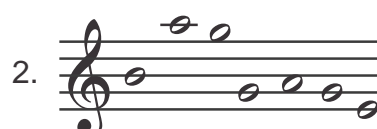


# Giant X-Word

## Across



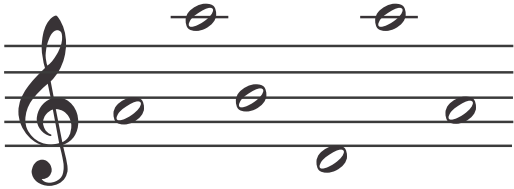
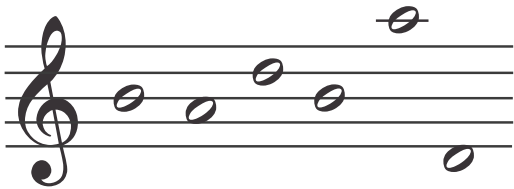
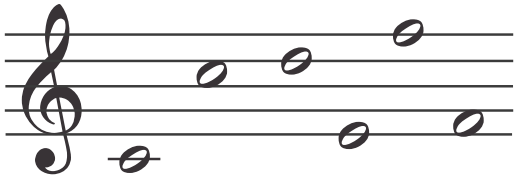
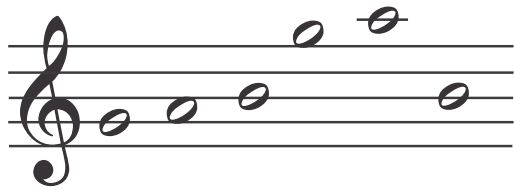
## Down



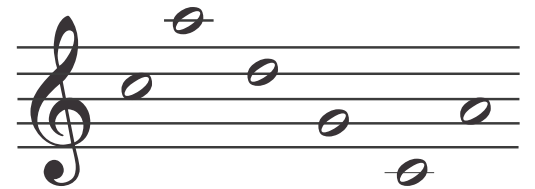
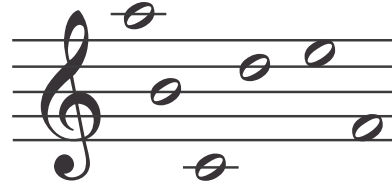
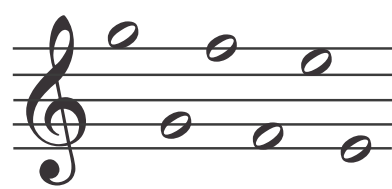
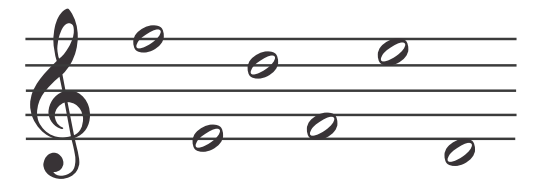
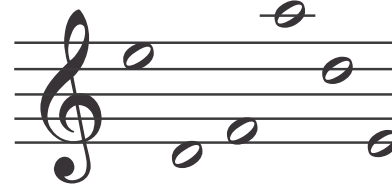
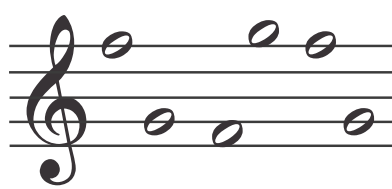
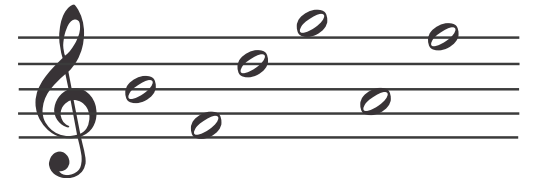
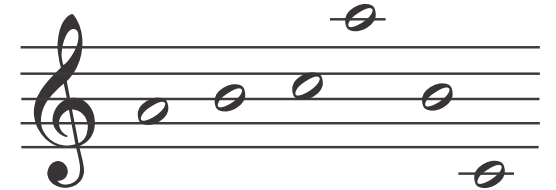


# No-Word Search

This one is really tricky. There are no words to find. You are looking for the exact combinations and the exact orders of the letters A to G as shown by the notes below. Remember that the notes and the letters need to be in exactly the same order as each other.



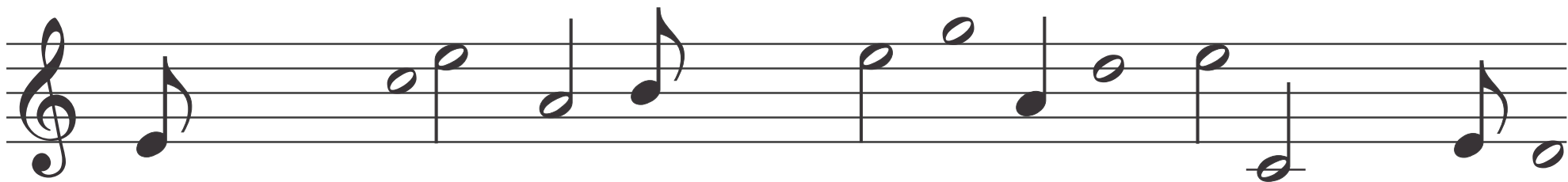
F	V	Y	C	B	A	C	B	A	D	B	X	J	D
G	E	Y	L	B	A	A	A	A	J	I	G	D	B
F	Q	D	K	U	B	K	B	E	D	F	A	D	E
G	X	F	C	C	D	D	Z	E	S	Q	E	X	P
F	E	F	D	B	A	T	F	Y	C	U	G	I	B
G	H	E	I	B	A	D	U	N	M	R	P	V	T
F	F	D	F	R	E	A	G	F	R	C	H	Z	U
G	D	C	V	F	S	C	V	C	O	F	G	Y	B
N	A	C	F	I	G	C	Z	N	A	V	O	C	N
R	A	B	Q	B	T	G	K	G	C	Z	X	A	E
N	T	C	G	K	R	M	D	E	S	O	I	T	K
Y	O	N	E	A	U	F	T	T	V	V	B	M	X
T	A	N	N	I	B	O	N	A	C	J	A	H	I



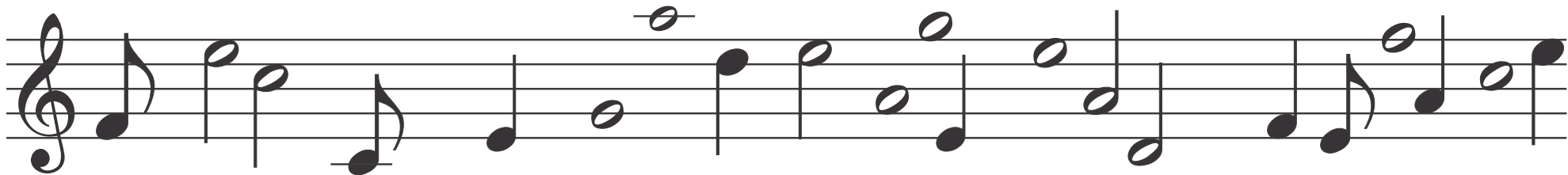


# Hidden Story

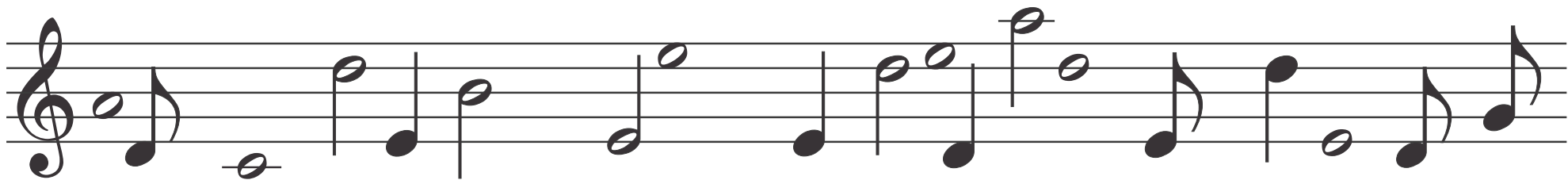
Some of the letters A B C D E F and G have been left out of this story. You can find them in the proper order on the staves below. See if you can fill them in. Use a very sharp pencil and write neatly.



H \_ n r y P u r \_ \_ I l w \_ s \_ o r n i n \_ n \_ l \_ n \_ . H \_ \_ o m p o s \_ \_



\_ o r t h \_ \_ h u r \_ h , t h \_ k i n \_ \_ n \_ t h \_ s t \_ \_ . H \_ \_ n \_ h i s w i \_ \_ \_ r \_ n \_ \_ s



h \_ \_ s i x \_ h i l \_ r \_ n \_ u t t h r \_ \_ o f t h \_ m \_ i \_ \_ \_ n \_ H \_ n r y \_ i \_ \_ y o u n \_ .



# Crazy - Maze

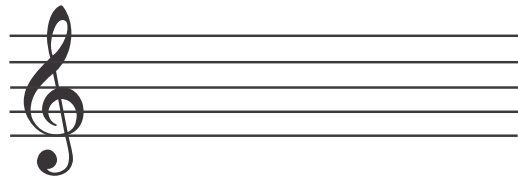
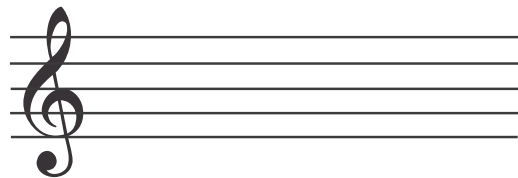
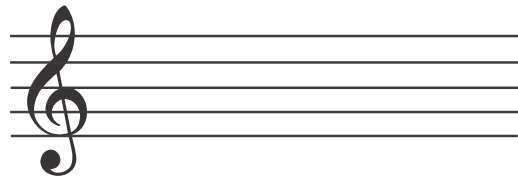
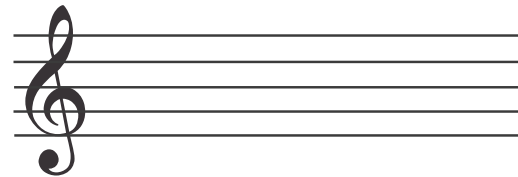
Do all the notes have paths leading to their names? How many paths can you find? Using coloured pencils will help. Number: .....  
You may enter anywhere you like on the outside edge. There has to be a clear path between notes and note names.

The maze is a circular labyrinth with a central point labeled 'AB'. The maze is surrounded by musical staves with notes. Arrows indicate connections between the maze and the notes. The note names are: 'BA', 'FD', 'EA', 'AD', 'FG', 'CB', 'GG', 'AF', 'CE', 'DA', 'GB', 'FE', 'GD'. The maze is surrounded by musical staves with notes, and arrows indicate connections between the maze and the notes.

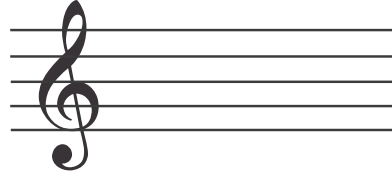
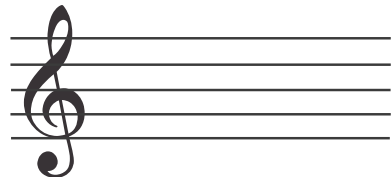
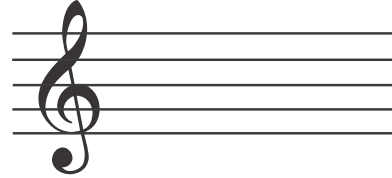
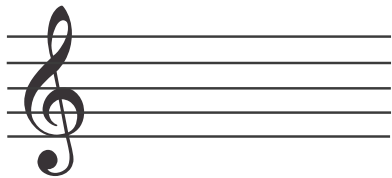
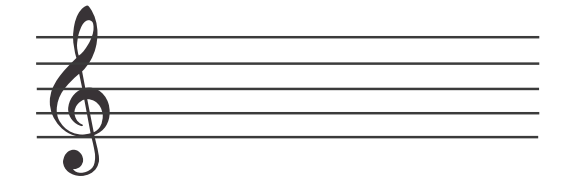
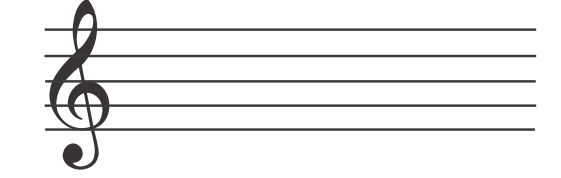
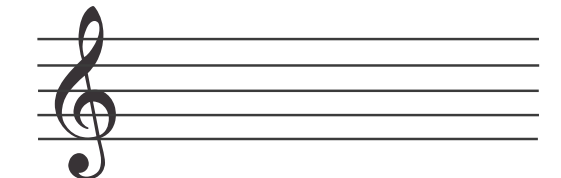
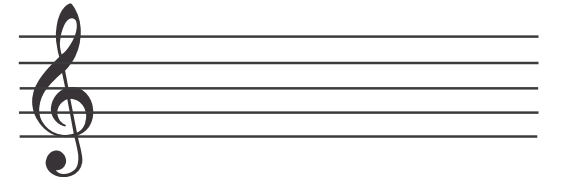


# Word Search

How many words can you find here? As you find a word, circle it, and then write it under one of the staves. Then, using semibreves, minims or crotchets, draw the notes for each of the letters in the correct places. You must find at least six words containing five letters or more. No words of less than three letters will be accepted.



C	D	A	E	C	F	D	D	E	C	A	F	D	C	
A	E	E	F	B	A	B	E	A	G	A	G	A	B	
B	F	D	F	F	A	C	D	G	E	C	B	F	E	A
B	A	E	E	A	G	A	E	G	B	D	E	B	B	D
A	C	B	E	C	C	D	D	D	E	D	A	F	E	D
G	E	B	B	E	C	E	G	D	A	B	E	G	A	D
E	D	A	A	D	E	A	D	A	E	E	G	A	G	N
F	D	D	E	C	O	O	I	H	L	D	L	E	F	C
E	A	F	A	D	E	M	C	D	E	D	A	B	E	V
E	D	C	M	E	E	T	I	S	E	A	G	E	E	N
D	D	A	G	C	F	A	D	G	H	B	K	E	B	D







# Octaves and Anagrams

The notes below form words. Find out what the words are and write them on the dotted lines.  
Then re-arrange the letters to form five new words. Write them in notes on the staves to the right.  
Write all the notes one octave lower than those on the left side of the sheet.

Five musical staves in treble clef, each with a dotted line below it. The notes on the staves are: Staff 1: G4, A4, B4, C5; Staff 2: D4, E4, F4, G4; Staff 3: A4, B4, C5, D5, E5; Staff 4: F4, G4, A4, B4, C5; Staff 5: D4, E4, F4, G4, A4.



Five blank musical staves in treble clef, each with a dotted line below it, intended for writing answers.

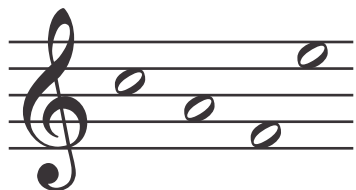



# Word Exchange


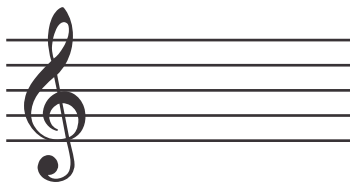
These words are made up of notes written in spaces.  
Can you figure out what the words are,  
and then write them again, using only notes that are on lines?



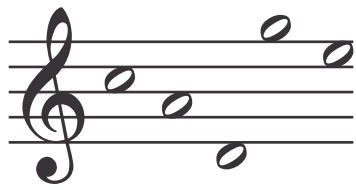
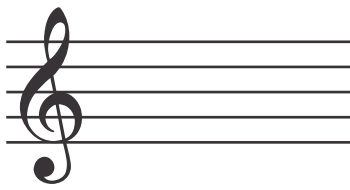

The word is: .....

The word is: .....

The word is: .....

The word is: .....

These words are made up of notes written on lines.  
Can you figure out what the words are,  
and then write them again, using only notes that are in spaces?




The word is: .....




The word is: .....




The word is: .....

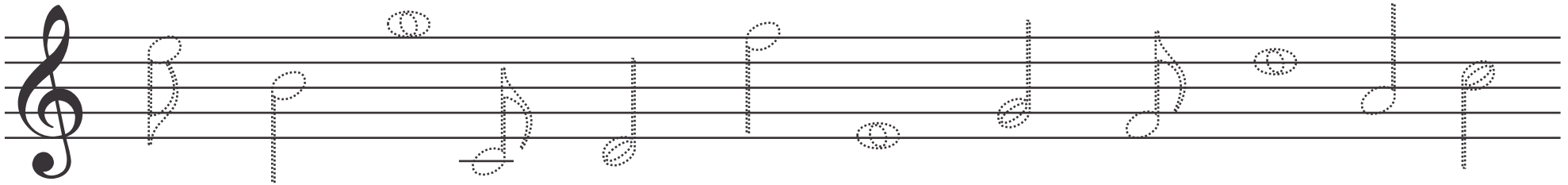



The word is: .....



# Colorama!

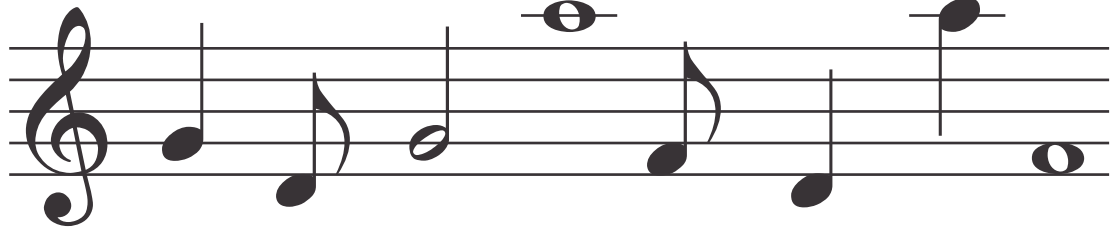
Use your coloured pencils and follow the instructions.



**INSTRUCTIONS - trace and colour these notes:**

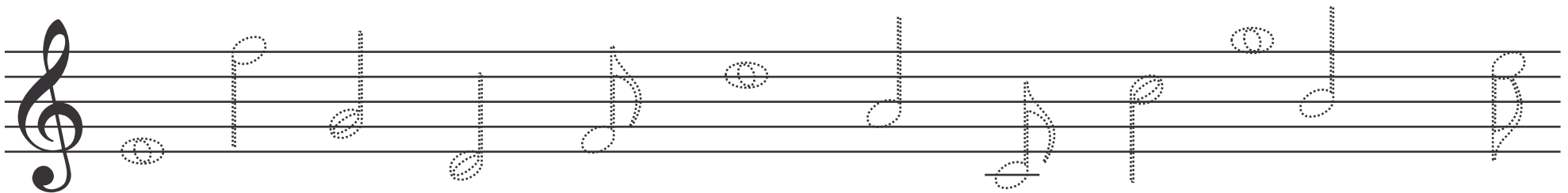
- Quavers, E in a space, dark blue
- Crotchets, F on a line, light green
- Semibreves, G in a space, pink
- Minims, D in a space, orange
- Quavers, C on a line, grey
- Crotchets, A in a space, dark green
- Semibreves, E on a line, brown
- Minims, C in a space, purple
- Quavers, F in a space, yellow
- Crotchets, B on a line, light blue
- Semibreves, D on a line, black
- Minims, G on a line, red

*Tiny Test*



Draw a circle around:  
 A on a line if it is a semibreve  
 F in a space if it is a Quaver

Draw a square around:  
 D if it is a space note and a crotchet  
 G on a line if it is a minim





# Scrambled Words

Unscramble the words from the boxes in the middle of the page. Supply the words or the notes to complete each box correctly.

Draw a line connecting the matching boxes as you complete each one.

.....

Face.....

.....

Age.....

.....

Bad.....

**E B**  
**D A**

**E D**  
**D E**

**E G**  
**E G**

**A D**  
**B**

**G**  
**D E**

**A E**  
**D F D**

**E B**  
**E**

**B G**  
**D A E**

**D A**  
**F**

**A C**  
**E F**

**E D**  
**C E**

**E A**  
**G**

Fad.....

.....

Edge.....

.....

Bee.....

.....

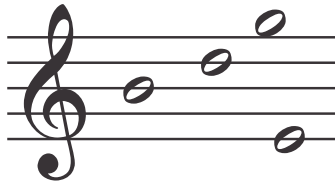


# Around the World

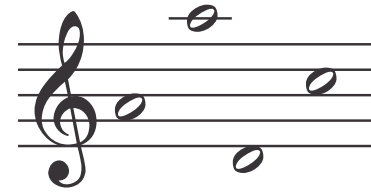
Each set of notes and letters, when unscrambled, spells the name of a country or major city of the world.



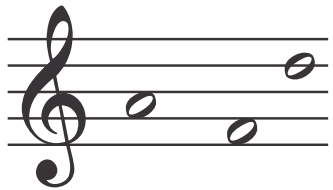
Y<sub>M</sub> N<sub>R</sub>



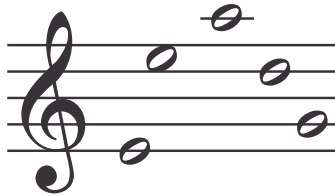
H<sup>N</sup> I<sub>R</sub> U



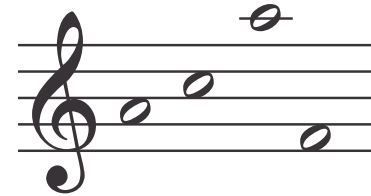
U<sup>K</sup>  
N<sub>L</sub>



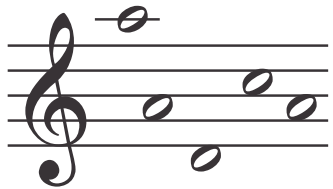
N<sub>I</sub> N<sub>L</sub>



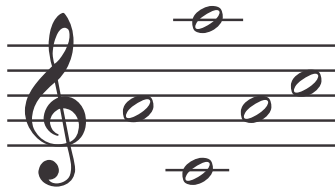
N<sub>R</sub> L<sub>N</sub>



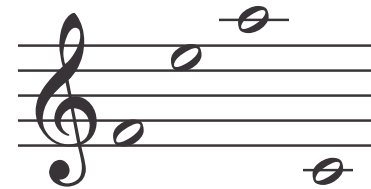
I<sub>R</sub>



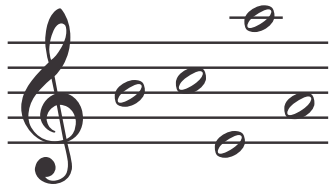
N



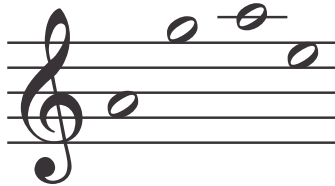
I<sub>N</sub> T<sub>R</sub> T



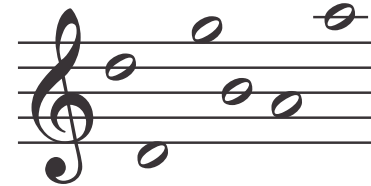
R<sup>N</sup>



L<sup>O</sup> R<sub>N</sub>



N<sup>R</sup> I<sub>T</sub> N

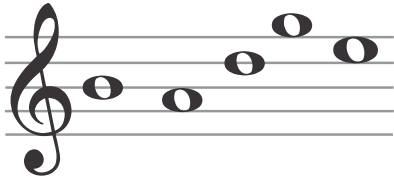


H

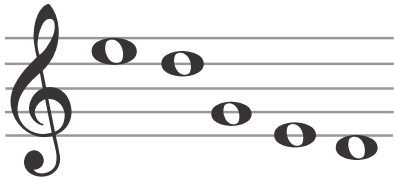


# QUIZ (tick the correct word)

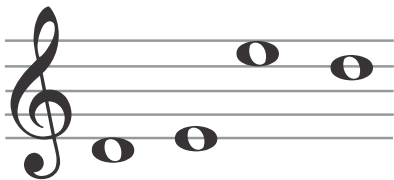
- badge
- cadge
- faded



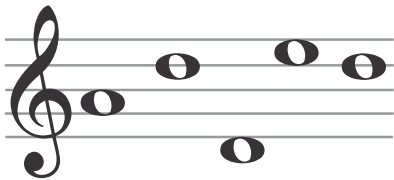
- faced
- edged
- added



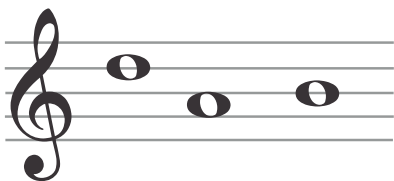
- deed
- feed
- bead



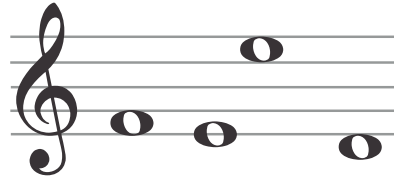
- egged
- faced
- added



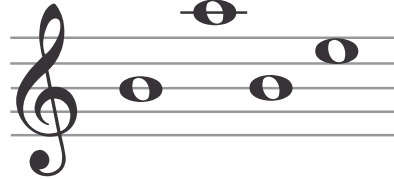
- bed
- dab
- bad



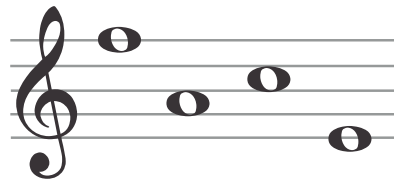
- bade
- gage
- feed



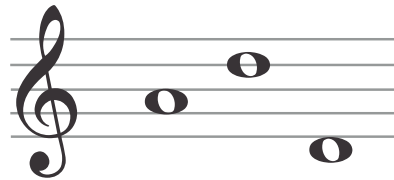
- gage
- babe
- bebe



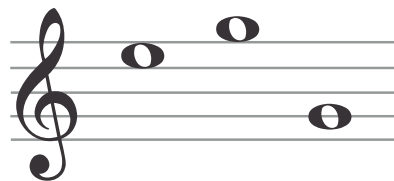
- fade
- face
- bade



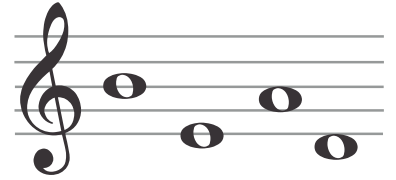
- add
- ade
- abe



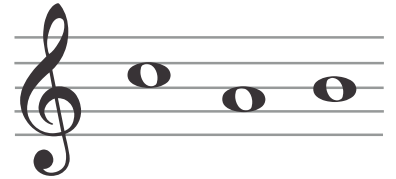
- dab
- age
- egg



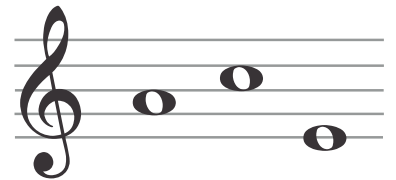
- bead
- bade
- feed



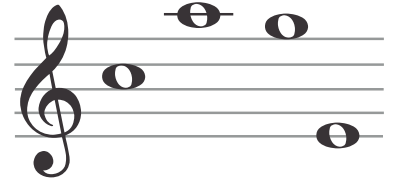
- cad
- cab
- ade



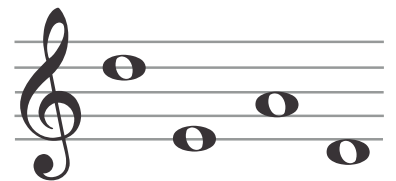
- ace
- egg
- dab



- face
- fade
- cage



- bead
- dead
- bade

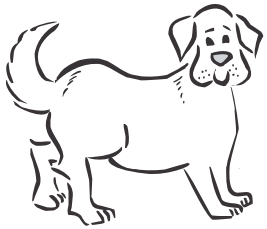




# The Prize

All these animals competed in a beauty contest. The winner received a prize.

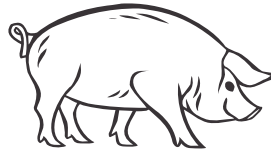
Cross out the letters needed to complete the animal names as you find them. The remaining letters spell out what the prize was.



\_ o \_



r \_ \_ it



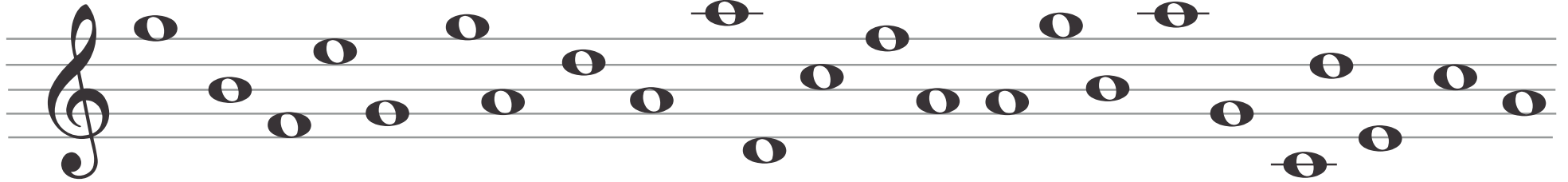
pi \_



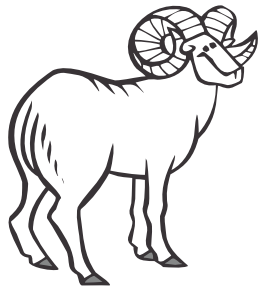
\_ \_ t



k \_ n \_ \_ roo



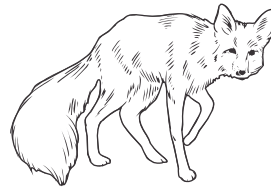
The Prize is a M \_ \_ \_ L



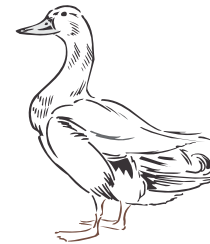
\_ o \_ t



\_ r o \_



\_ o x



\_ u \_ k



\_ \_ m \_ l



# Competition

Which teddy can make the most words? Use each letter only once and each word only once.  
(Cross out the letters as you use them)

The image shows two teddy bears, Ziggy and Zaggy, each surrounded by a collection of letter blocks. Ziggy's blocks are: A, C, E, B, C, G, D, B, E, A, E, F, A, G, F, D, B, E, C, D, B, E, C, D, G, A, F. Zaggy's blocks are: F, A, G, F, B, C, D, A, A, B, D, B, E, C, G, E, D, G, E, C, E, F, B, D.

The winner is

.....





Name .....

# Secret Code

Look carefully . . . there are clues!

<input type="checkbox"/>	✕*◇*●*	
<input type="checkbox"/>	●*✕*◇**	
<input type="checkbox"/>	♣*▲▲*	

<input type="checkbox"/>	♣**✕	
<input type="checkbox"/>	✕*●*	
<input type="checkbox"/>	◇*✕*	

<input type="checkbox"/>	◇*▲*●	
<input type="checkbox"/>	*♣♣*	
<input type="checkbox"/>	*●▲*	

<input type="checkbox"/>	✕*✕*	
<input type="checkbox"/>	♣**●	
<input type="checkbox"/>	●*✕*	

<input type="checkbox"/>	✕*●*	
<input type="checkbox"/>	*▲*●	
<input type="checkbox"/>	◇*●*	

<input type="checkbox"/>	●**●	
<input type="checkbox"/>	♣**♣	
<input type="checkbox"/>	●*◇*	

<input type="checkbox"/>	✕*♣	
<input type="checkbox"/>	*●*	
<input type="checkbox"/>	✕**	

<input type="checkbox"/>	●*♣	
<input type="checkbox"/>	✕*▲	
<input type="checkbox"/>	▲*▲	

<input type="checkbox"/>	▲*♣	
<input type="checkbox"/>	*◇*	
<input type="checkbox"/>	▲**	

<input type="checkbox"/>	✕*●	
<input type="checkbox"/>	♣*▲	
<input type="checkbox"/>	♣*▲	

Can you crack the  
**Secret Code?**

♣ \* ● \* ✕ ◇ ▲

<input type="checkbox"/>	*▲*	
<input type="checkbox"/>	♣*●	
<input type="checkbox"/>	✕*●	

<input type="checkbox"/>	♣**	
<input type="checkbox"/>	*▲▲	
<input type="checkbox"/>	*●●	

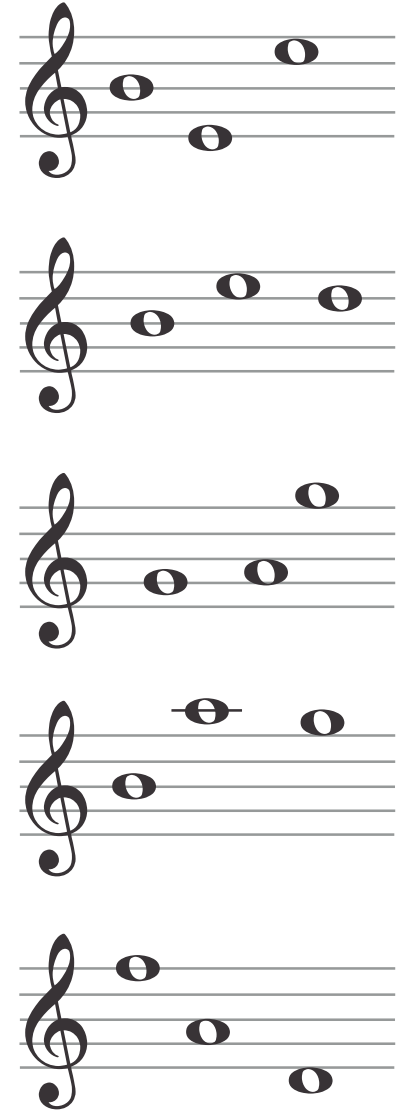
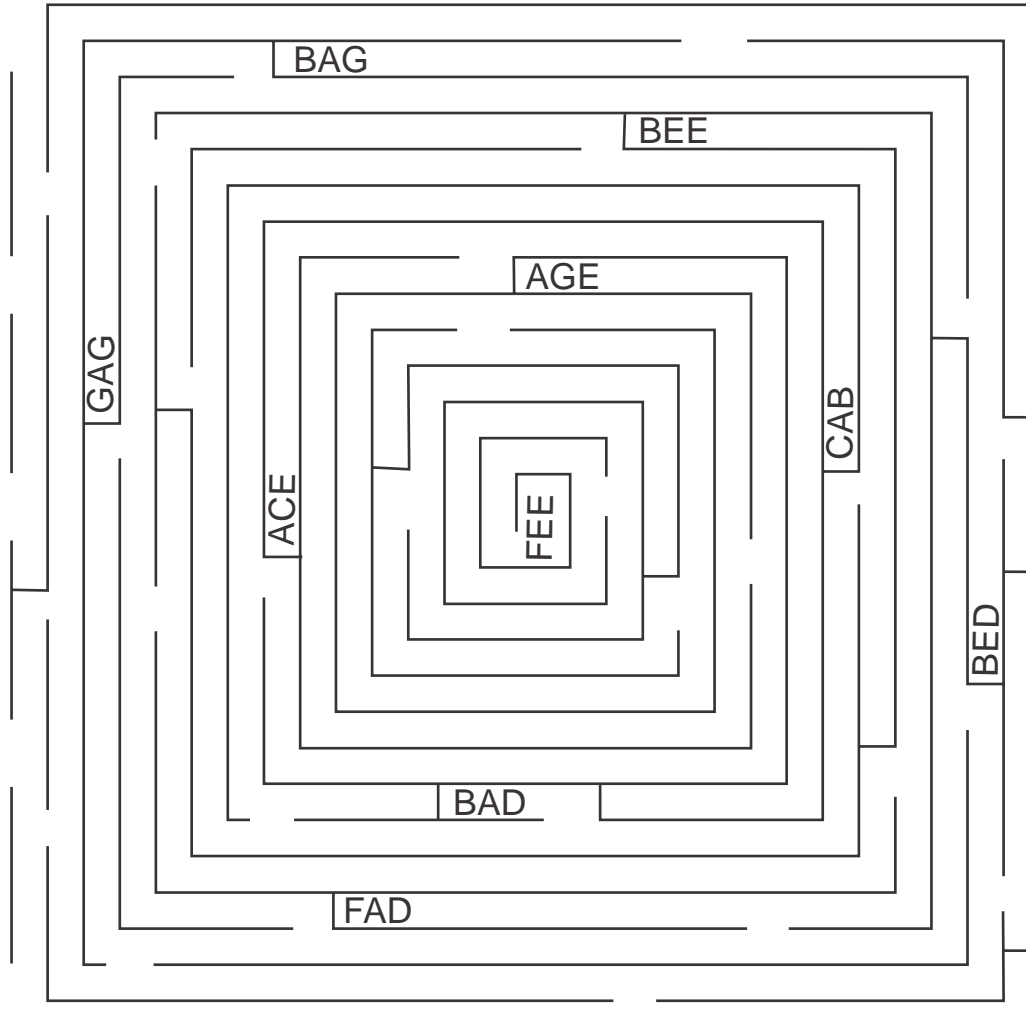
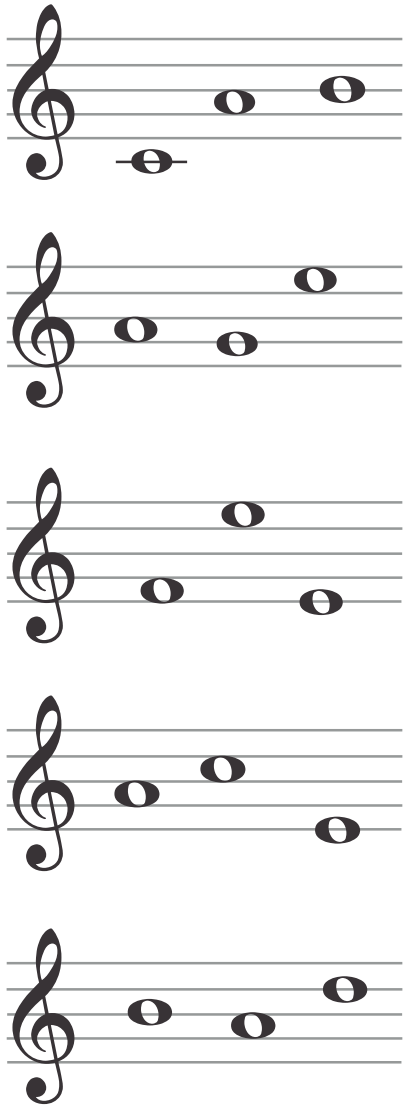
<input type="checkbox"/>	♣*●*	
<input type="checkbox"/>	✕*◇*	
<input type="checkbox"/>	●**●	

<input type="checkbox"/>	*♣*●	
<input type="checkbox"/>	▲*▲*	
<input type="checkbox"/>	*●▲*	



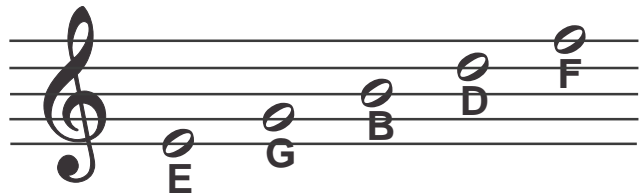
# Amazing

Draw different coloured paths to link up the words.

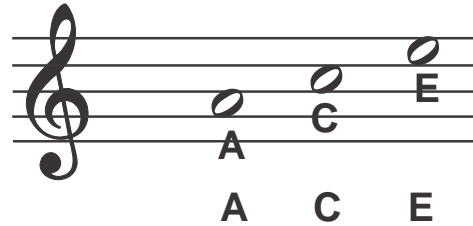




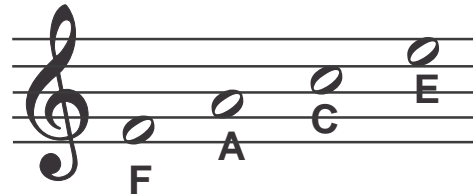
# Basic Information



Every **G**ood **B**oy **D**eserves **F**ruit



**A** **C** **E**



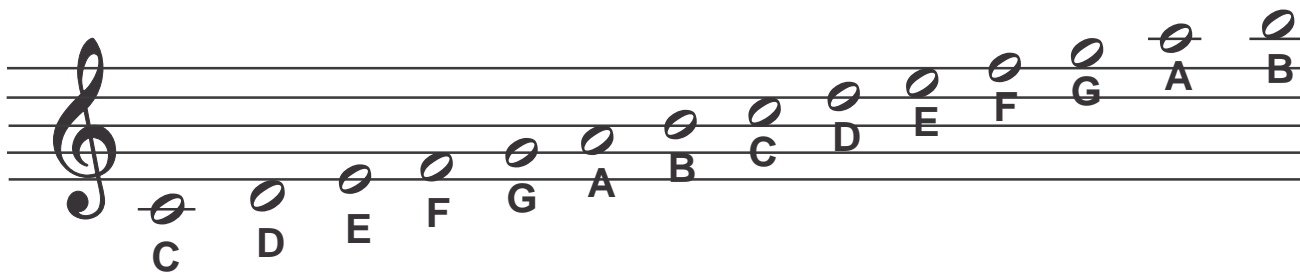
**F** **A** **C** **E**



**F** **G** **A** **B**  
Four **G**irls **A**nd **B**oys



**C** **D** **E**



## The notes used in this worksheet are:



### **semibreve (or whole note)**

The semibreve is the longest note in general use.



### **minim (or half note)**

A minim is played for half the time of a semibreve.



### **crotchet (or quarter note)**

A crotchet is played for half of the time of a minim.



### **quaver (or eighth note)**

A quaver is played for half of the time of a crotchet.

