

LCD TV

Quick Setup Guide

Sony Customer Support

U.S.A.: <http://www.sony.com/tvsupport>
 Canada: <http://www.sony.ca/support>
 United States 1.800.222.SONY
 Canada 1.877.899.SONY
 Please Do Not Return
 the Product to the Store

For Your Convenience

Online Registration:	Be sure to register your TV.	
	United States	http://productregistration.sony.com
	Canada	http://www.sony.ca/registration

BRAVIA

© 2013 Sony Corporation
 Printed in Mexico

Congratulations! Your new BRAVIA® TV opens the door to the “Stunning HD Experience”. This guide will explain how to get the most from your new High Definition TV.

Please take these steps before you power up your BRAVIA:

- Register online at: <http://productregistration.sony.com> (from U.S.A.)
<http://www.sony.ca/registration> (from Canada)
- Make sure you've removed all accessory contents from packaging.
- Install 2 AAA batteries (supplied separately) in your remote control.
- Determine whether you will mount your TV on a wall or place it on the Table-Top Stand.
- Give your TV 2 3/8 inches (6 cm) of space behind it to properly ventilate.

You must get HD programming to experience the stunning detail of HDTV.

- The quality of the image you see on your BRAVIA can only be as high as the quality of the signal it is receiving.
- Contact your cable, satellite or HD Service provider to upgrade your service to HD. Receive over-the-air HD broadcasts with an HD-quality antenna (www.antennaweb.org) and discover the wealth of entertainment now available on super-high-resolution Blu-ray Disc™.
- To learn more about HDTV, visit: U.S.A.: <http://www.sony.com/HDTV>
 Canada: <http://www.sony.ca/hdtv>

Connecting to Your TV

Your BRAVIA TV must be properly connected to components such as sound system and cable or satellite box.

- Turn off and unplug all components before making connections.
- Do not turn on the TV until connection setup is completed.
- See reverse side of this poster for sample connection diagrams.

INPUT Connector	VIDEO	AUDIO	High or Standard Definition Quality						
	Connection		1080/24p	1080p	1080i	720p	480p	480i	PC
HDMI 1 HDMI 2/MHL HDMI 3 HDMI 4		HDMI/MHL cable carries both video and audio signals.	HD	HD	HD	HD	SD	SD	*1
COMPONENT		Audio L/R		HD	HD	HD	SD	SD	
VIDEO		Audio L/R						SD	

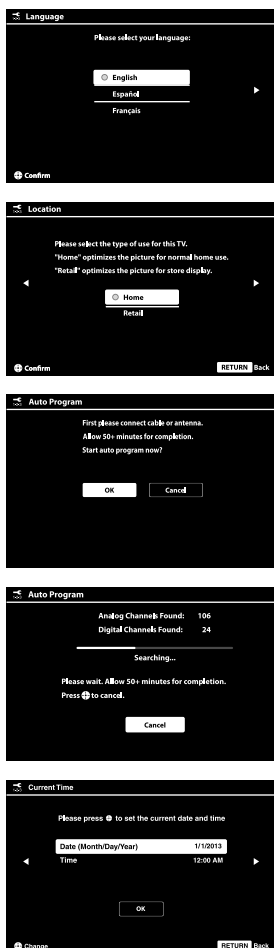
High
 ↑
 Audio/Video Performance
 ↓
 Standard

*1 For supported PC formats refer to the operating instruction manual.

2 Running Initial Setup

Initial Setup instructions are displayed on the screen when your BRAVIA is powered on for the first time.

- Select the language for the OSD (on screen display).
- Choose your viewing country.
- Select the type of use.
- Connect either cable or antenna to your TV. You can connect both using an A-B RF switch (not supplied).
 - If you are not using the CABLE/ANTENNA connection to TV (for example, if using a cable or satellite box), you can cancel the **Auto Program** by selecting **Cancel**.
- Channels of the signal source (cable or antenna) connected in step 4 are automatically scanned and detected.
- Set the current date and time.
- If your BRAVIA is connected to a wired LAN or wireless LAN, make the network setting.
- Select **Automatic Software Download**. If your BRAVIA is connected to a network, it is recommended to set to automatically download future available services.



If you did not follow the Initial Setup screen the first time you turned on your TV, refer to your Operating Instructions Manual. To change the signal source setting (cable to antenna or vice versa), press **HOME** and select **Settings, Channel, Signal Type** to select signal source type, and then perform **Auto Program**.

To Do List

- When the Initial Setup is completed, consider carrying out these items:
- Set Closed Captions (CC)
 - Set Parental Lock
 - Show/Hide Channels
 - Manage Inputs (AV Setup)
 - Set Speakers
- For details, refer to your BRAVIA Operating Instructions Manual.

3 Watching Your TV

Select Your Content Source

Whether you are watching cable, satellite or broadcast TV; playing a VCR, DVD or Blu-ray Disc; or connecting to your PC or other equipment, you need to choose the correct input using your remote control:

- Press the **INPUT** button repeatedly until your selection is highlighted on-screen.

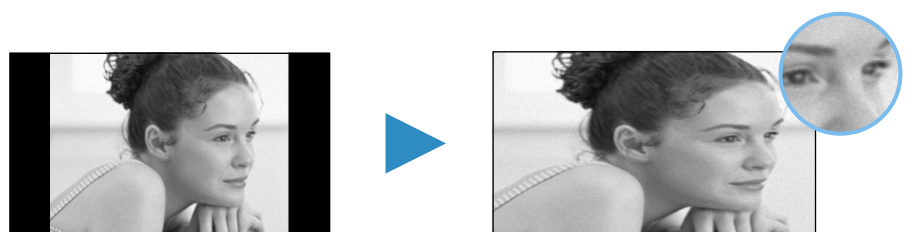
Adjust Screen Shape and Aspect Ratio

High Definition and Standard Definition signals are transmitted with different aspect ratios (the width-to-height ratio of the image).

The 16:9 aspect ratio (common to most HD signals) looks perfect on your BRAVIA.



The boxy 4:3 aspect ratio (common to most SD signals) must be adjusted to fill the screen.



- Press the **WIDE** button on your remote control to display the **Wide Mode** setting of your preference.

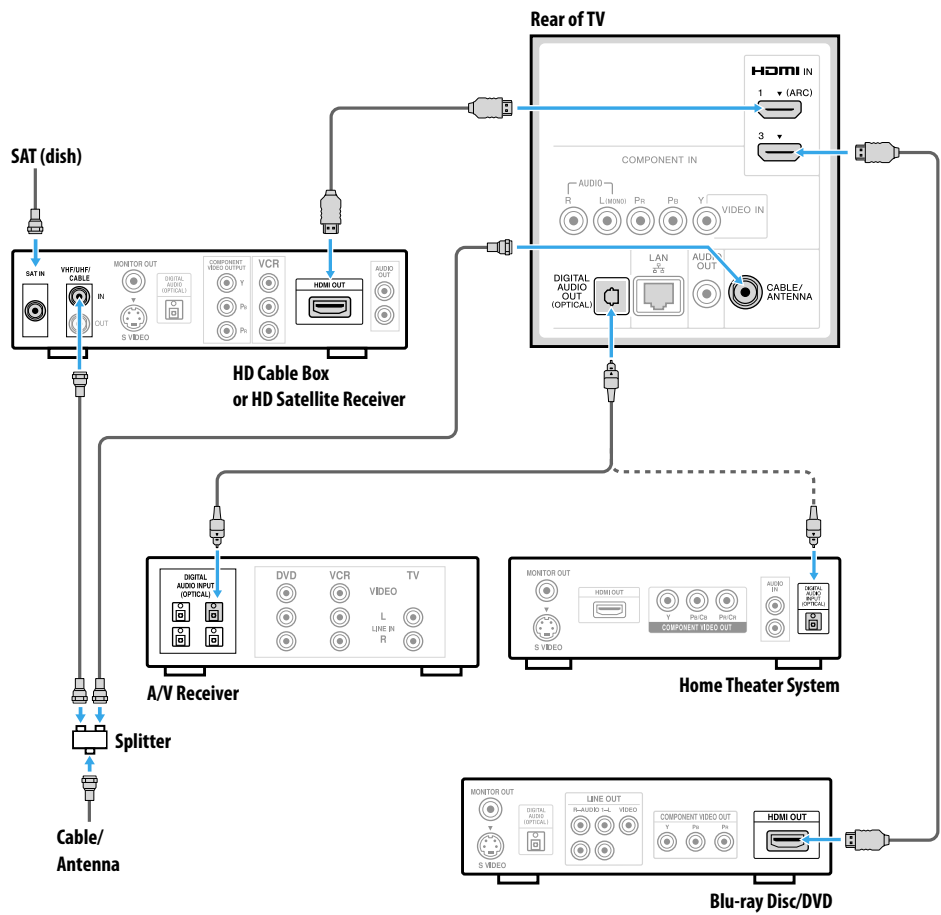
Customize Sound and Picture Quality

You can choose optimum sound and picture settings to match the content you are displaying on your TV:

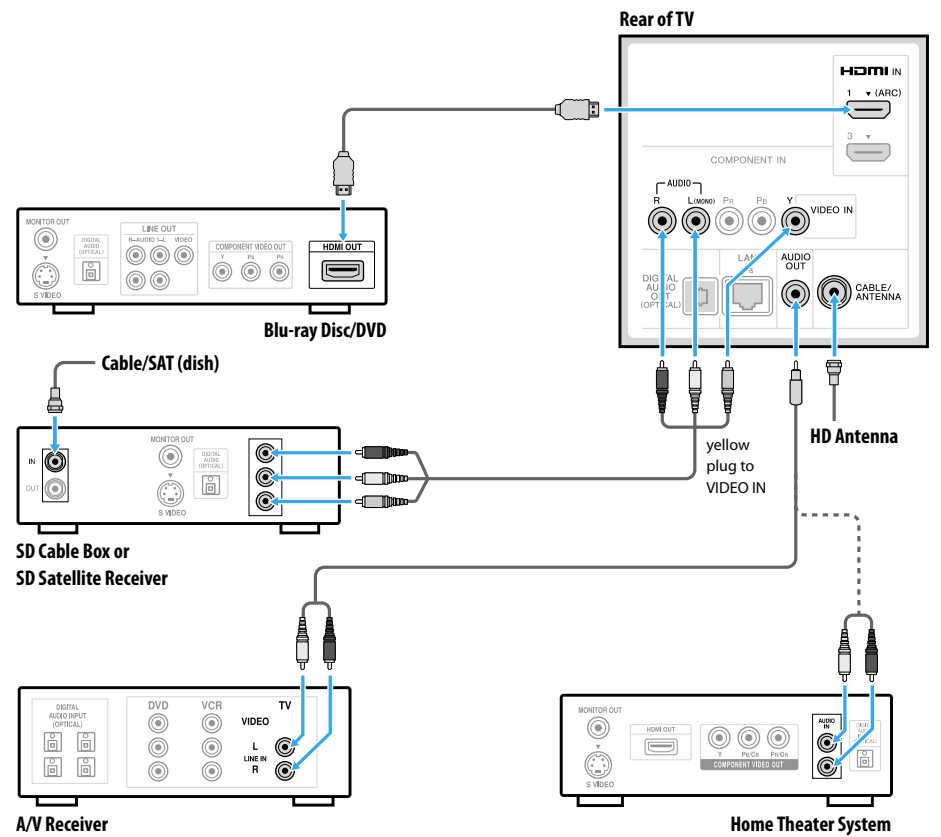
- Press the remote control's **HOME** button, select **Settings**, then select the **Picture** and **Sound** settings to adjust the picture and sound quality of your content.

Refer to your Operating Instructions Manual for more information on adjusting or customizing your settings.

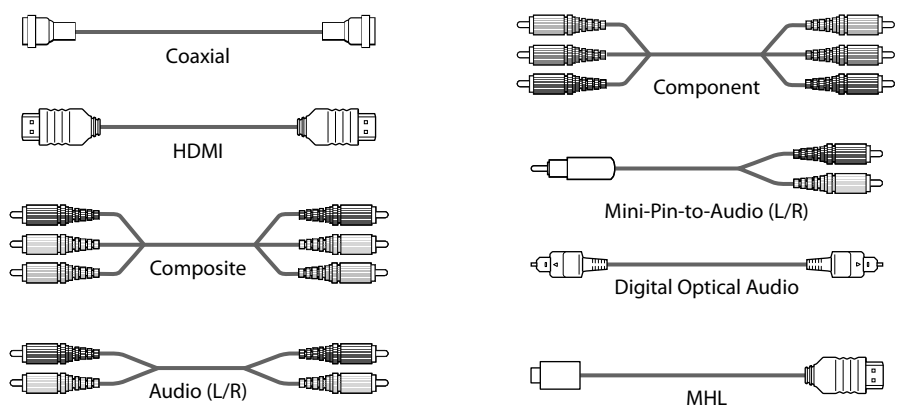
Basic Connection with HD Cable Box



Basic Connection with SD Cable Box



Required Cable Types for Connection



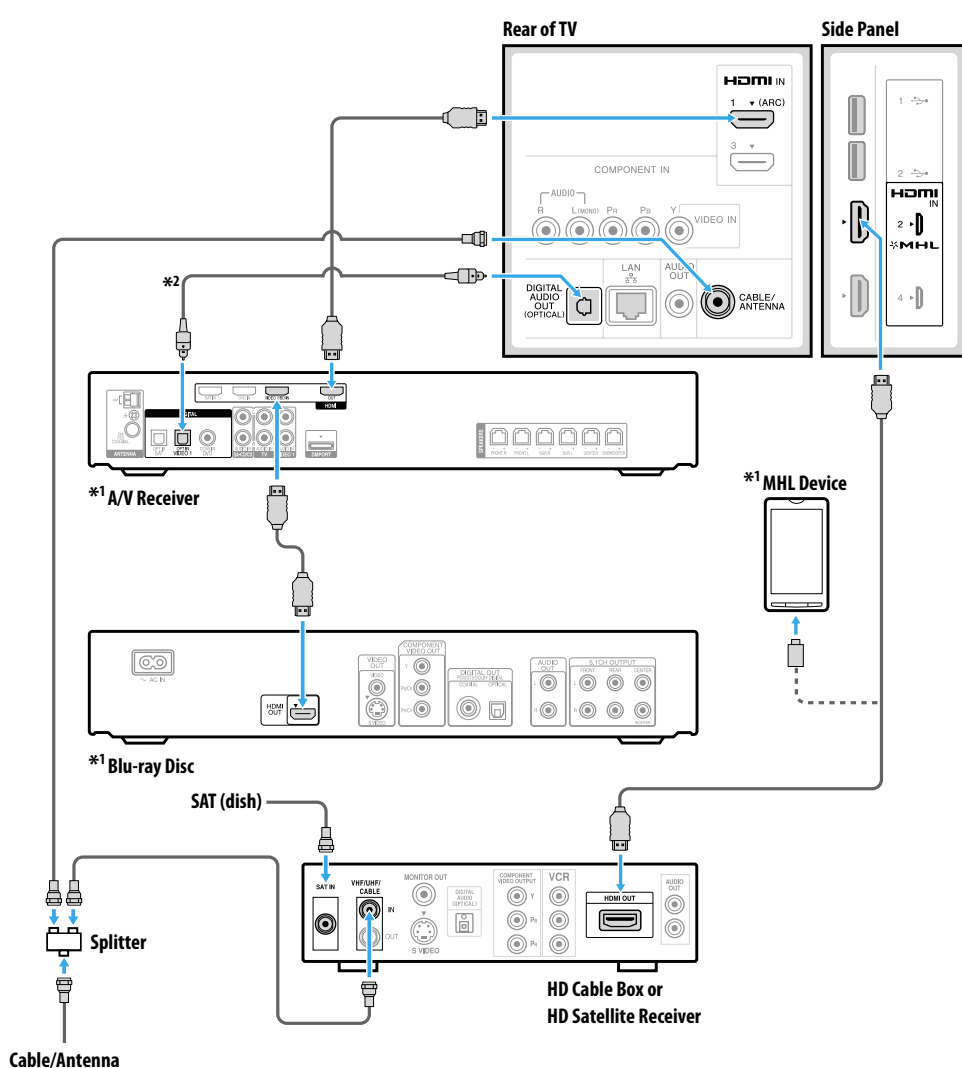
Notes on Connection:

- Your TV is equipped with multiple HDMI inputs; connect your incoming signal source (HD Cable Box, HD Satellite Box, or DVD) with HDMI/MHL or component video for the best possible picture quality.

Connecting a PC to Your BRAVIA® TV

- Press PC's FUNCTION Key + Select Output to transmit to TV.
- Refer to your BRAVIA® Operating Instructions Manual for more information.

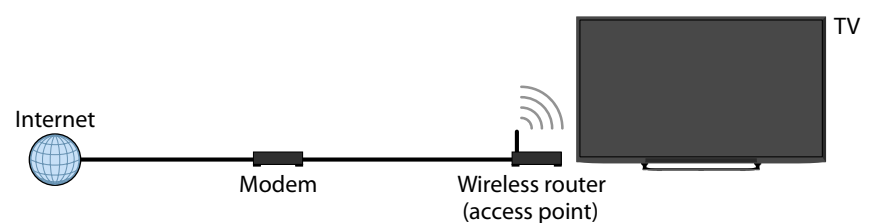
HD BRAVIA® Sync™ Basic Connection



*1 Signifies a BRAVIA Sync capable device.

*2 The optical connection is only needed for A/V receivers that do not support ARC (Audio Return Channel).

Built-in Wireless LAN Connection and Setup



Wireless Network can be set during initial setup.

Wireless Setup security type differs depending on the wireless router (access point) used.

Follow the chart below and select the appropriate menu.



Security type of your Wireless router (access point)

WPS (*1)
PIN Code

WPS (*1)
Push Button

SSID with Security
Key (WEP/WPA (*2))

SSID without
Security Key

Select
WPS (PIN)

Select
WPS (Push
Button)

Select
Scan, then select
a network from
the list (*3)

Select
Scan, then select
a network from
the list (*3)

*1 Wi-Fi Protected Setup™ (WPS) is a mark of the Wi-Fi Alliance.

*2 Wi-Fi Protected Access™ (WPA) is a mark of the Wi-Fi Alliance.

*3 Before scanning, be sure to make the wireless router (access point) settings (SSID/Key).