



CHARTER AUTHORIZATION RECOMMENDATIONS

September 2019



APPLICATION REVIEW PROCESS

- ❑ Convened committees with internal and external experts, including community leaders.
- ❑ Reviewed performance data for existing schools of applicants according to student growth and School Performance Scorecard results.
- ❑ Committees discussed bright spots and areas of concern for each application and developed questions for applicant interviews.
- ❑ Interviewed all applicants to assess their capacity and growth plans.
- ❑ Public comments gathered through the Office of Charter Schools website.



APPLICATION REVIEW PROCESS

- ❑ Scored applications using the State of Tennessee Charter Application Rubric, which includes three (3) main sections: Academic Plan Design & Capacity, Operations Plan & Capacity, and Financial Plan & Capacity. A Past Performance section is included for operators currently operating a school or schools in Tennessee.
- ❑ Charter school applications were additionally evaluated taking into account SCS Board Policy #1011, Section IX, B.2 (b) and Section VI, B. 5.
- ❑ Recommendations made to the Shelby County School Board of Directors for board resolution.



APPLICATION REVIEW PROCESS

- Appeals Process

- **State Board Policy 2.500:** *If the State Board becomes the chartering authority pursuant to 11(c)(iii) above, the LEA and the charter school may submit a charter agreement signed by the LEA and the charter school to the State Board stating that the charter school shall be overseen and monitored by the LEA. If such charter agreement is received by the State Board within thirty (30) calendar days after the State Board become the charter authorizer, then the authorization of the charter school shall be officially transferred to the LEA. Such agreement can be submitted electronically.*



NEEDS ANALYSIS AND FINANCIAL IMPACT

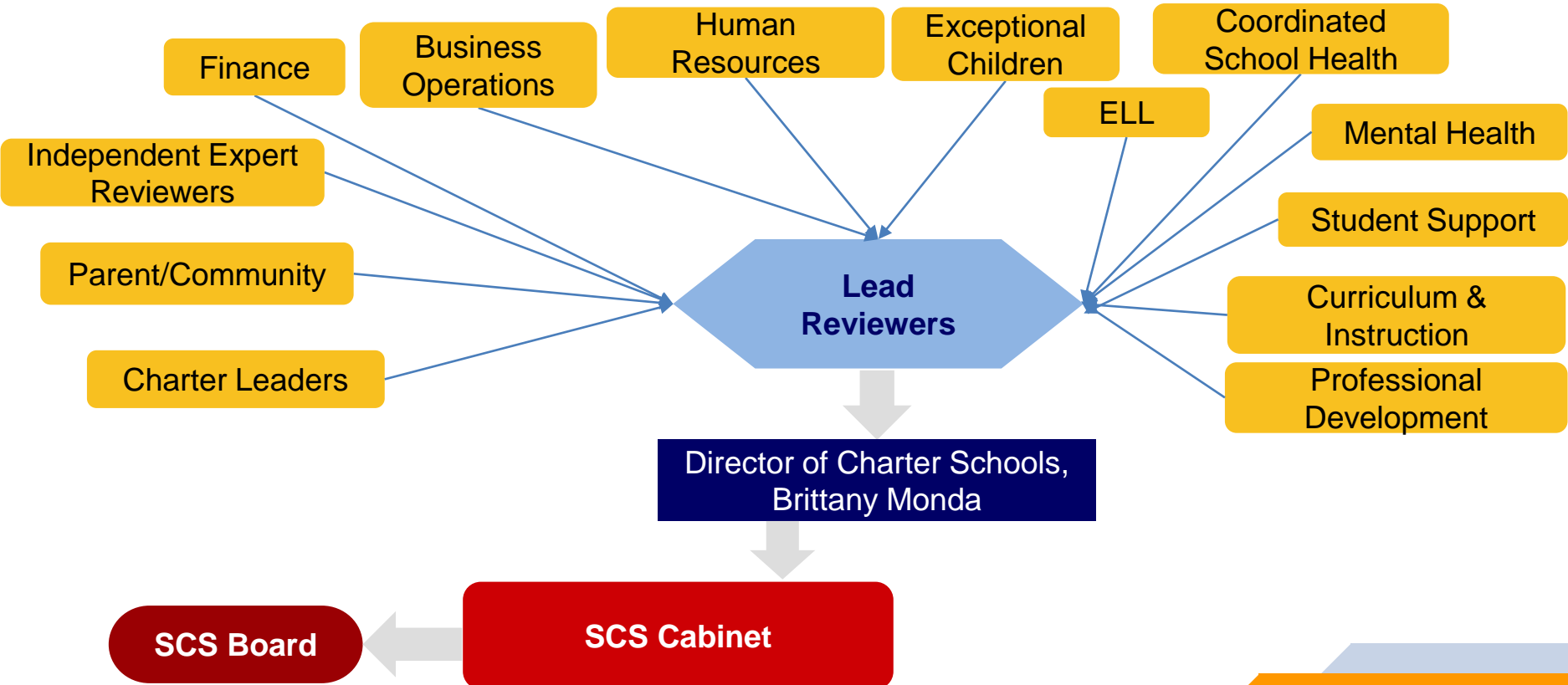
In addition to the State's Application rubric, the application review team used information from the District's Regional Seats Analysis and the supplemental application to determine what areas are in need of schools based on enrollment and/or performance.

- ❑ The Office of Charter Schools required each charter school applicant to submit an application supplement for the 2019 application cycle that detailed the need for a charter school (academic, enrollment, programmatic) in the region and/or neighborhood they planned to locate and/or target for recruitment. The supplement request included a Regional Seats Analysis report that detailed **student enrollment, program capacity/building utilization, and school performance** by grade level and region.
- ❑ The Finance team used information from the charter school applications to draft a Financial Impact Analyses for each proposed charter school. The analyses detail the potential loss of students, loss of funds, amount of BEP funds to be transferred based on proposed enrollment, and impact on District school building utilization.

A summary of the Regional Seats Analysis and Financial Impact can be found on the 2-page recommendation summaries and in the Appendix of this presentation.



CHARTER AUTHORIZATION RECOMMENDATION DECISION FLOW CHART





PROPOSED SCHOOL DETAILS

Proposed School	Proposed Grade Structure	Proposed Neighborhood	Focus	Year 1 Enrollment Projection	Capacity Enrollment Projection
Beacon College Preparatory Charter School	K-5	Raleigh	College Prep	108	324
Encore STEM Academy	K-5	Orange Mound	STEM/Coding	120	240
Freedom Preparatory Academy	K-8	Binghampton	College Prep	300	900
Green Dot K-8 Charter School	K-8	Whitehaven	College Prep	300	1260
Memphis Business Academy Hickory Hill High	9-12	Hickory Hill	College & Career Readiness	100	400
Memphis School of Excellence Cordova	6-12	Cordova	STEM	225	450
Memphis School of Excellence Elementary Cordova	K-5	Cordova	STEM	190	310
Metamorphoses Vocational Technical School	9-12	East Region	Academic Integrated Vocational Training	300	590
Rich ED Academy of Leaders (REAL)	6-8	Central City West Region	All-Girls/Liberal Arts	112	336
The Academy All Girls School	K-5	Central City West Region	All Girls	40	240
The Gentlemen and Ladies STEM Academy	K-8	Cordova	STEM	505	865

Schools in gray did not submit an amended application.

Recommendations

The image features a large, dark blue arrow pointing to the right, which serves as a background for the word 'Recommendations'. Below this arrow, there is a horizontal orange bar. The background is composed of light blue and white geometric shapes, creating a modern, abstract design.



SUMMARY OF RECOMMENDATIONS

Proposed School/Neighborhood	Rationale				
<p>Memphis School of Excellence Elementary Cordova</p> <p>Cordova</p> <p><i>Replication</i></p> <table border="1" data-bbox="54 701 434 896"> <tr> <td data-bbox="54 701 150 798">✓</td> <td data-bbox="150 701 434 798">TN Charter Application Rubric</td> </tr> <tr> <td data-bbox="54 798 150 896">✓</td> <td data-bbox="150 798 434 896">SCS Board Policy #1011</td> </tr> </table>	✓	TN Charter Application Rubric	✓	SCS Board Policy #1011	<ul style="list-style-type: none"> <li data-bbox="469 336 1864 638">❑ Per SCS Board Policy #1011, Section IX, B.2 (b) – “A charter school operator that operates two or more charter schools or campuses will have its request for charter school replication recommended to the Board for approval if (1) each of the operator’s schools or campuses has a current composite score of 3.5 or better in each of the three core components of the Performance Accountability Framework...{or} if all but one of the operator’s schools or campuses has a current ..score of 3.5 or better.” At present, MSE has two schools with academic data that meet the board’s policy of 3.5 or above, operations data meets a 3.5 or above, and are in good standing financially. <li data-bbox="469 685 1875 909">❑ Per SCS Board Policy #1011, Section VI, B. 5 – “the district shall consider whether the establishment of a proposed charter school in a particular geographic location of the LEA is feasible or will create oversaturation in the proposed geographic location.” According to the most recent strategic regional analysis, in the Cordova neighborhood there is a current student capacity of 4,801 seats with 5,124 enrolled in K-5, meaning there is 323 seats available. The total number of seats at MSEE Cordova at full capacity meet the need.
✓	TN Charter Application Rubric				
✓	SCS Board Policy #1011				



SUMMARY OF RECOMMENDATIONS

Proposed School/ Neighborhood

Rationale

Beacon College Prep
Raleigh

- ❑ Per SCS Board Policy #1011, Section VI, B. 5 – “the district shall consider whether the establishment of a proposed charter school in a particular geographic location of the LEA is feasible or will create oversaturation in the proposed geographic location.” According to the most recent strategic regional analysis, the North Region, inclusive of the Raleigh community has a current student capacity of 5,067 seats in K-5, with 4,390 students. This means that Raleigh is over-saturated by 677 seats.

	TN Charter Application Rubric
	SCS Board Policy #1011



SUMMARY OF RECOMMENDATIONS

Proposed School/ Neighborhood

Rationale

Memphis School of
Excellence Cordova
(6-12)
Cordova

- ❑ Per SCS Board Policy #1011, Section VI, B. 5 – “the district shall consider whether the establishment of a proposed charter school in a particular geographic location of the LEA is feasible or will create oversaturation in the proposed geographic location.” According to the most recent strategic regional analysis, the Cordova neighborhood has a current student capacity of 5,421 seats and 4,581 students enrolled in 6-12; this means the East region is oversaturated in 6-12 by 840 seats.

Replication

	TN Charter Application Rubric
	SCS Board Policy #1011



SUMMARY OF RECOMMENDATIONS

Proposed School/Neighborhood	Rationale				
<p>Freedom Prep Academy Charter Binghampton Binghampton/White Station</p> <p><i>Replication</i></p> <table border="1" data-bbox="42 718 426 912"> <tr> <td data-bbox="42 718 139 816">X</td> <td data-bbox="139 718 426 816">TN Charter Application Rubric</td> </tr> <tr> <td data-bbox="42 816 139 912">X</td> <td data-bbox="139 816 426 912">SCS Board Policy #1011</td> </tr> </table>	X	TN Charter Application Rubric	X	SCS Board Policy #1011	<ul style="list-style-type: none"> <li data-bbox="467 289 1835 354">❑ The reasons for growth and capacity remain unclear and there is not a compelling argument for FPA replicating a school that has not yet opened. <li data-bbox="467 398 1864 638">❑ Per SCS Board Policy #1011, Section IX, B.2 (b) – “A charter school operator that operates two or more charter schools or campuses will have its request for charter school replication recommended to the Board for approval if (1) each of the operator’s schools or campuses has a current composite score of 3.5 or better in each of the three core components of the Performance Accountability Framework....{or} if all but one of the operator’s schools or campuses has a current ..score of 3.5 or better.” At present, FPA has three schools with academic data, only one of which is at/above the 3.5 threshold for academics. <li data-bbox="467 682 1874 922">❑ Per SCS Board Policy #1011, Section VI, B. 5 – “the district shall consider whether the establishment of a proposed charter school in a particular geographic location of the LEA is feasible or will create oversaturation in the proposed geographic location.” According to the most recent strategic regional analysis, the Binghampton/White Station community has a current student capacity of 2,792 with 3,513 students in K-8; this means the Binghampton/White Station community needs 721 seats, mostly in the White Station neighborhood of the Binghampton/White Station community. The total number of seats at FPA at full capacity oversaturates the area.
X	TN Charter Application Rubric				
X	SCS Board Policy #1011				



SUMMARY OF RECOMMENDATIONS

Proposed School/ Neighborhood

Rationale

Gentlemen and
Ladies STEM
Academy
Cordova

- ❑ There are significant gaps in the academic plan. While the applicant has provided some clarity around it's STEM focus, the performance goals related to STEM are not rigorous and the plan lacks specifics around differentiated learning for all students i.e. gifted, SPED, ELL, etc.
- ❑ The application includes limited details regarding development and implementation of IEPs in addition to an underdeveloped plan for supporting at-risk students.
- ❑ The professional development plan for teachers is not sufficient or detailed enough to show that teachers without a STEM or PBL background would have the tools and training they need to execute this academic model.

X	TN Charter Application Rubric
X	SCS Board Policy #1011



SUMMARY OF RECOMMENDATIONS

Proposed School/ Neighborhood

Rationale

Green Dot Charter K-8
Whitehaven

- ❑ Green Dot’s TVAAS or proficiency scores are not strong enough to justify approving more schools at this time. New schools require intensive and focused management, and adding an additional school would put additional strain on the local network.
- ❑ Per SCS Board Policy #1011, Section VI, B. 5 – “the district shall consider whether the establishment of a proposed charter school in a particular geographic location of the LEA is feasible or will create oversaturation in the proposed geographic location.” According to the most recent strategic regional analysis, the Westwood/Whitehaven community has a current student capacity of 8,627 students but only has 7,531 students at the K-8 level; this means Whitehaven is over-saturated by 1,096 seats.

X	TN Charter Application Rubric
X	SCS Board Policy #1011



SUMMARY OF RECOMMENDATIONS

Proposed School/ Neighborhood

Rationale

Memphis Business
Academy Hickory Hill
High
Hickory Hill

Replication

- ❑ The application does not provide a compelling and robust 5-year network growth plan to ensure that MBA’s network of schools have strong direction and meet the academic needs of students.
- ❑ Per SCS Board Policy #1011, Section IX, B.2 (b) – “A charter school operator that operates two or more charter schools or campuses will have its request for charter school replication recommended to the Board for approval if (1) each of the operator’s schools or campuses has a current composite score of 3.5 or better in each of the three core components of the Performance Accountability Framework....{or} if all but one of the operator’s schools or campuses has a current ..score of 3.5 or better.” At present, MBA has four schools with academic data, only one of which is at/above the 3.5 threshold (& one that is well below standard at 2.48).
- ❑ Per SCS Board Policy #1011, Section VI, B. 5 – “the district shall consider whether the establishment of a proposed charter school in a particular geographic location of the LEA is feasible or will create oversaturation in the proposed geographic location.” According to the most recent strategic regional analysis, the Hickory Hill community has a current student capacity of 3,234 but only has 2,268 students at the 9-12 level; this means Hickory Hill is over-saturated by 966 seats at the 9-12 level. Though MBA addresses why they have selected Hickory Hill from a performance perspective, they did not address why Hickory Hill is a strategic fit from an enrollment perspective.

X	TN Charter Application Rubric
X	SCS Board Policy #1011



SUMMARY OF RECOMMENDATIONS

Proposed School/ Neighborhood

Rationale

The Academy All
Girls
Midtown

- ❑ There is not significant evidence that the proposed school would have the capacity to serve special populations in an appropriate, legal, and effective manner and the applicant has not demonstrated community need for the school.
- ❑ The application severely under-budgeted for the technological tools that are integral to the implementation of the proposed academic plan.
- ❑ The applicant has not provided sufficient evidence of the ability to operate a fiscally sound school. The provided budget includes severely inaccurate assumptions about a number of critical budget items and does not align with the stated staffing plan.

X	TN Charter Application Rubric
X	SCS Board Policy #1011



Questions?

APPENDIX

HISTORICAL PERFORMANCE DATA



CMO/Network	Existing Schools w/test data	2017-19 Overall SPS	2019 Composite TVAAS	2018 Composite TVAAS	2017 Composite TVAAS	2016 Composite TVAAS
Freedom Preparatory Charter Schools	Freedom Preparatory Academy	4.14	5	5	5	5
	Freedom Preparatory Academy Elem. - Westwood (ASD)		3	3	1	
	Freedom Preparatory Academy Charter School	3.33	5			
	Freedom Prep Academy Elementary (SCS)	3.23	3	5		
Green Dot Public Schools	Bluff City High (TN BOE)		5	5		
	Fairley High School (ASD)		1	1	1	1
	Hillcrest High (ASD)		3	1	1	
	Kirby Middle School (ASD)		1	5	1	
	Wooddale Middle School (ASD)		1	5	1	
Memphis Business Academy	MBA Elementary	3.35	3	5	2	1
	MBA Middle	2.48	1	1	3	
	MBA High	3.18	2	1	3	3
	MBA Hickory Hill Middle	3.77	5			
Memphis School of Excellence	Memphis School of Excellence	3.95	3	3	5	4

* Climate Only

■ Excellent (4 - 5)
 ■ Good (3 - 3.99)
 ■ Fair (2 - 2.99)
 ■ Needs Improvement (1 - 1.99)



	FPA #1 (6-12)	FPA Elem Westwood (ASD)	FPA Elem (SCS)	FPACS (K-8)
OVERALL COMPOSITE TVAAS				
2019	5	3	3	5
2018	5	3	5	
2017	5	1		
LITERACY COMPOSITE TVAAS				
2019	3	2	2	3
2018	5	3	5	
2017	5	1		
NUMERACY COMPOSITE TVAAS				
2019	5	4	3	5
2018	5	3	4	
2017	5	3		
SCIENCE COMPOSITE TVAAS				
2019		2		
2018	5	2	5	
2017	5	1		
SOCIAL STUDIES COMPOSITE TVAAS				
2019	5			3
2018	5	3	3	
2017				

*Freedom Preparatory Academy Network of schools also operates another 6-12 school that doesn't have test data yet.



	Bluff City High (ASD)	Fairley High (ASD)	Hillcrest High (ASD)	Kirby Middle (ASD)	Wooddale Middle (ASD)
OVERALL COMPOSITE TVAAS					
2019	5	1		1	1
2018	5	1	1	5	5
2017		1	1	1	1
LITERACY COMPOSITE TVAAS					
2019	5	1		2	1
2018	4	1	2	5	5
2017		1	1	1	1
NUMERACY COMPOSITE TVAAS					
2019	4	1		3	1
2018	5	1	2	5	5
2017		1	1	1	1
SCIENCE COMPOSITE TVAAS					
2019					
2018		1	3	5	5
2017		1	3	2	1
SOCIAL STUDIES COMPOSITE TVAAS					
2019		1		1	1
2018		1	3	1	1
2017		1	2		



	MBA (Elem)	MBA (Middle)	MBA (High)	MBA Hickory Hill Middle
OVERALL COMPOSITE TVAAS				
2019	3	1	2	5
2018	5	1	1	
2017	2	3	3	
LITERACY COMPOSITE TVAAS				
2019	3	2	5	4
2018	4	2	3	
2017	2	3	5	
NUMERACY COMPOSITE TVAAS				
2019	4	1	1	5
2018	5	1	1	
2017	2	1	1	
SCIENCE COMPOSITE TVAAS				
2019				
2018	3	1	2	
2017	3	5	3	
SOCIAL STUDIES COMPOSITE TVAAS				
2019		1	2	1
2018	1	1	3	
2017			5	

*Memphis Business Academy also operates two (2) additional schools that do not have test data yet: MBA Hickory Hill Elementary and Memphis STEM Academy.



Memphis School of Excellence (6-12)	
OVERALL COMPOSITE TVAAS	
2019	3
2018	3
2017	5
LITERACY COMPOSITE TVAAS	
2019	3
2018	3
2017	4
NUMERACY COMPOSITE TVAAS	
2019	3
2018	3
2017	2
SCIENCE COMPOSITE TVAAS	
2019	
2018	1
2017	5
SOCIAL STUDIES COMPOSITE	
2019	3
2018	5
2017	3

*Memphis School of Excellence also operates one (1) additional school that does not have test data yet: Memphis School of Excellence Elementary

Proposed Charter School	Neighborhood or Region for Proposed School	% of schools <3.00 on Scorecard in the Neighborhood/Region	Seats Needed (based on program capacity)	Possible Student Loss	Possible Transfer of BEP Funds (without reducing operational costs)
Beacon College Prep (K-5)	Raleigh	73.2% less than 3.00 Raleigh K-5	-203 (under enrolled) Raleigh K-5	108 to 324 students over a 5-year period	\$1,006,430 to \$3,268,178
Encore STEM Academy (K-5)	Orange Mound	52.6% less than 3.00 Orange Mound K-5	-476 (under enrolled) Orange Mound K-5	120 to 240 students over a 5-year period	\$1,118,256 to \$2,420,873
Freedom Prep Academy Binghampton (K-8)	Binghampton	0% less than 3.00 Binghampton/W.S. K-8	721 seats needed Binghampton/W.S. K-8	300 to 900 students over a 5-year period	\$2,795,640 to \$9,259,837
GreenDot K-8	Whitehaven	71.4% less than 3.00 Whitehaven K-8	-1,096 (under enrolled) Whitehaven K-8	300 to 1,400 students over a 6-year period	\$2,795,640 to \$12,963,772
Memphis Business Academy HS (9-12)	Hickory Hill	88.7% less than 3.00 Hickory Hill 9-12	-966 (under enrolled) Hickory Hill 9-12	100 to 400 students over a 5-year period	\$931,880 to \$4,115,483
Memphis School of Excellence Elem. (K-5)	Cordova	16.0% less than 3.00 Cordova K-5	323 seats needed Cordova K-5	190 to 310 students over a 5-year period	\$1,770,572 to \$3,126,960
Memphis School of Excellence (6-12)	Cordova	66.5% less than 3.00 Cordova 6-12	-840 (under enrolled) Cordova 6-12	225 to 450 students over a 5-year period	\$2,096,730 to \$4,791,310
Rich Ed Academy (6-8)	Central City West Region	43% less than 3.00 Central City W 6-8	-1,450 (under enrolled) Central City W 6-8	112 to 336 students over a 5-year period	\$1,043,706 to \$3,389,222
Academy All Girls (K-5)	Midtown	44% less than 3.00 Central City W K-5	-2,457 (under enrolled) Central City W K-5	40 to 240 students over a 6-year period	\$363,823 to \$2,410,141
Gentlemen & Ladies STEM Academy (K-8)	Cordova	21.6% less than 3.00 Cordova K-8	-678 (under enrolled) Cordova K-8	505 to 865 students over a 5-year period	\$4,705,994 to \$8,725,228
Metamorphoses Vo-Tech (9-12)	East Region	100% less than 3.00 East Region 9-12	161 seats needed East Region 9-12	300 to 590 students over a 5-year period	\$2,795,640 to \$5,951,312

Schools in gray did not submit an amended application.