

PUBLIC AUCTION

We will sell the following at auction located at Harmony Middle School on North 4th Street, Farmington, Iowa
WATCH FOR THE AUCTION SIGNS ON

SAT. MARCH 19, 2011 • 10:00 A.M.

1995 Chevy Lumina – Fairbanks Morris Platform scale – (11) 320 Watt Lithonia lighting units – 10' x 12' Garage doors – Sev Metal Lockers – Intercom system – (7) Air conditioners (window units) – (2) school scoreboards – Misc Darkroom equip – Sev; file cabinets, white boards, televisions, children's desk - misc desk – Chalkboards - 7 Lunchroom tables – Hobart commercial dishwasher – Stainless steel steam table – Refrigerator – (3) Deep freezers – Commercial Range Hood – (2) Butcher block kitchen work tables. There will be various items not listed.

CHECK OUR WEBSITE FOR AUCTION FLYERS
www.FettAuctionService.com or iowauctioneers.org

HARMONY COMMUNITY SCHOOL

Any announcement made day of sale over the auction block holds precedence over any advertising.

SALE CONDUCTED BY

FETT REAL ESTATE & AUCTION SERVICE

AUCTIONEERS: Col. Gary Fett, 319-878-3391 • Col. Curt Fett • Col Cody Fett
BROKER: Sharon Fett

Tillable Land Auction

Lewis Co, MO
April 9th, 2011
www.mcafeeauctionservice.com

QPH: REPOS - DOUBLE - WIDE
4 Bedroom, 2 Bath, Financing,
This Home Won't Last,
Quality Pre Owned
Homes in Columbia
573-303-5504

FOR SALE: 90 Acres M/L, overlooking MO river, great place to build, can build big lake, lots of wildlife.
 660-338-2743 3-18

HOME FOR SALE: 7.4 acres, 2,000 sq. ft., geothermal heat, 4 bedroom, 2 bath, 2 car garage. 2 miles north Williamstown, MO. \$120,000.
 217-242-8441 3-18

THINKING ABOUT MOVING TO MO?: See our all brick home & 3.1 acres on craigslist. Under real estate, search for 2244096955 or call 660-263-0667 4-1

REAL ESTATE

ABANDONED WOODED FARM BY LAKE! Out of state owner needs quick sale of timbered acreage by private lake. Was \$42,950 will take \$32,450!
www.lakesundown.com
Four Rivers Realty, Inc.
 866-401-6653 3-11

FOR SALE: Pocket Beagles, Very Small, Intelligent Animal, Ideal House Pet or Hunting Dog.
 660-974-7322 3-18

FOR SALE: English Redtick Coonhounds. Puppies To Fully Trained. Excellent Bloodlines. Larry Marshall.
 641-680-0892
 641-675-3421 ETFN

FOR SALE: Sun Conure, To Go To Good Home; With Large Cage on Wheels With Storage Area \$900 OBO.
 Call 319-592-3214 TFN

MH Henry County, IA LAND & ACREAGE AUCTION

FRIDAY, MARCH 18th at 11:00 AM

289.36 ACRES ±

Located 2 miles south of Mt. Pleasant, IA on Hwy 218/27

7 Tracts

PRODUCTIVE FARMLAND • PREMIER HUNTING & RECREATIONAL TRACTS • WELL ESTABLISHED CRP • BEAUTIFUL ACREAGE & CABIN BUILDING SITES
Sale to be held at Comfort Inn & Suites, Mt. Pleasant, IA

Dorothy Burns Estate & Robyn Bowling—Owners
Seleta A. Bainter of Bainter & Thomas Law Firm—Attorney

www.menkehoyerauction.com

319-367-5744
 New London, Iowa
 Partners of Fraise Auction & Real Estate

Your Trader Goes A Long Way To Serve You



2008 GL 1800 Gold Wing W/Champion Trike Kit, Titanium in Color, 5800 Miles, Passenger Arm Rest Just Built!

\$29,995

C&C Cycle
 Chariton, IA • 888-475-2243
www.cc-cycle.com

www.hawkeyetrader.com

Got Fish?

Contact for Price & Delivery

Order Your Fish Today!

CALL NOW!
 Rt. 2 Box 61
 Hurdland, MO 63547

660-423-5482
Fax: 660-423-5337

Species Available: Catfish; Grass Carp; Large Mouth Bass; Hybrid Bluegill; Bluegill; Redear Sunfish; Black Crappie; Fathead Minnow; Walleye; Muskie; Golden Shiners

WE STOCK MOST SPECIES FRESHWATER GAME & BAITFISH

HARRISON FISHERY

Special Orders & Seasonal Specials Available

Deliveries Available - Call for Details -

Email: Curtis@harrisonfishery.com
 Website: harrisonfishery.com

Agri-Power Pride Club Pig Sale

2001 Iowa State Fair Supreme FFA Chapter Runner Up
 2002-2003 Iowa State Fair Supreme FFA Chapter
 2004-2010 Iowa State Fair Supreme FFA Chapter-Runner Up

March 19, 2011

At the Southern Iowa Fairgrounds

In Oskaloosa, IA ~ West of the Show Pavilion

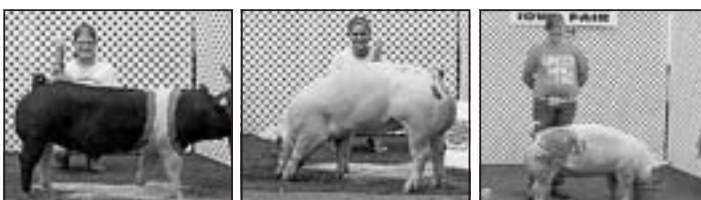
(Travel North From Hwy 92 Onto "I" Street)

Viewing Begins at 12-Noon with Bidding at 1 PM

Show Pig Quality in Private Treaty Format

Consigners include: Neil Albertson, Fremont
 Brett Roquet, Fremont-Matt Bombei, Delta
 Jayme Sieren, Keota-Tom Olson, Keswick
 Victory Show Pigs-Ottumwa

Cara Roquet-Fremont	Lesley Roquet - Fremont	Makenzie Scanlon, Oskaloosa
Res. Champion Market Gilt	Champion Commercial Gilt	Champion Market Gilt
Sold by Neil Albertson-Fremont	Sold by Neil Albertson-Fremont	Sold by Matt Bombei & Sons



Not responsible for accidents
 For more information contact

Neil Albertson, 641-933-4748 or 777-5552
Patrick Powers, 641-969-4288 or 660-7764

PUBLIC AUCTION

3 Big Days March 24, 25 & 26

Macon, MO
 Auction Held at: Lollie Bros Livestock Mkt. Inc.
GUNS, ANTIQUES, ARTIFACTS, & WESTERN MEMORABILIA
 Selling 300 guns including 2 collections from MO.
The demand for guns is very high!

Early Gun Consignments: Win 12 Featherweight 12ga, Win 12 16 ga, Win 25 12 pump, Win 74 22 Semi Auto, Win 77 22, Win 94 38-55; Win 67 30-30, 22 single shot bolt, 22 short; Win 94 30-30 SRC, Win 1887 12ga; Win 1886 45-70, Win 1876 40-60, Win 1885 22 short, 32-40, 40&2 WCF; Win 1897 12 pump, Win 1892 44 SRC, 32 WCF, 25-35, Win 1894 38-55, Win 1873 38, Win 140 Ranger 12 ga, Win 94 30-30, Win 12 16 ga, Win 1876 40-60, Win 90 22 short, Win 90 22 WRC, 2x Colt SAA 44-40 set w/case; Colt SAA 44, Colt SA 44-40, Colt Frontier 22 Golden Spike, Colt FAA 45, 38-40, Colt Sporer 223, Colt Python 357, Colt Gambler 22 short, Colt SAA 45, 38-40, Colt Lightning 22; Remington 700 22-250, Rem 58 20 ga, Rem 878 12ga, Rem 700 7mm, Rem 700 VR-1 7mm, Rem 12B 22 short, Rem 700 300 rim, Rem 700 270, Rem 1100 12 ga, 28ga, 410, Rem 870 20 ga, Rem 1187 12 ga, Rem 48 Sportman 16 ga, Rem 511 22, Rem 7400 30-06; Ruger Super Rod Hawk 45/454, 44 mag, Ruger Blk Hawk 357; Ruger 10-22 22, Ruger M77 NKII 22 swift, Ruger M77 30-06, Ruger 22 LR 22 mag, Ruger Single Six 22, Ruger MKIII 22; S&W 586 357, S&W 29-3 44 mag, S&W #2 32 Rimfire, S&W 4013 40; Llama IX-C 45; Star 9mm; New England SBI 410; Charles Dailey 12 ga, 20ga; Cobray DD 45; Kermackey Musket 45; Allen & Thurber 36 cal; Barnside BP 56 cal; Rohm 66 22; Navy Arms 44; Marlin 336 RC 30-30, Marlin 410 lever; Jennings J-22; Norinco SKS 7.62x39; Sharps 50 cal; Weatherby MKV 30-378, 257, 340; Mosin Nagant Remm; Wittes 12 ga; H&R 922 22; CZ NB50 7.65; Hi-Point JCP 40, Hi-Point 9mm, Hi-Point 380; Keltec P32 32; Thomas Arms 32; Cobra Tip-up 22 mag; Revelation 350 410, 310c 20ga; Stevens 311C 410; Beretta 76 22 semi auto, Beretta 950BS 25; Weatherby MKXXII 22; Browning Citori 12ga, Browning A5 12ga, Browning A5 12 ga/30-06, Browning Field BPS 12 pump, Browning 9mm; Ihaca 37 Featherwt 12ga; American Arms 12ga, AA Arm 9mm semi auto; High Standard 22 tip up; Mauser G9840 8mm; Beaumont Vital 1871; Savage 93R17 17 HMR, Savage Fox B 12 ga; Universal MI 30 mic; Thompson Center 50 cal, Super 14 223 & 44 Rim Mag; CVA Accura 50

View Our Website: www.eastforkguns.com
 for pictures and updated consignments.
 Contact us now to consign your estate, collection or individual items.
EAST FORK GUNS & COLLECTIBLES CO.
660-385-2516 • 660-346-9520 or 660-651-4024
 704 MAIN ST MACON, MO 63552 www.eastforkguns.com



Edina Livestock Sales

- Friday, March 11th, 2011 - Special Feeder Calf
-Featuring Verlin Tonnies 47 bred Angus heifers
~ Due to calve March 15
- Friday, March 18th, 2011 -
Annual TL Ranch Performance Tested Bull Sale
Selling 50 Reg. Angus Bulls
- 10 Commercial Angus cows w/ calves by side
- Friday, March 25th, 2011 - Special Feeder Calf Sale
- Friday, April 1st, 2011 - Special Feeder Calf Sale

To Consign For Any or All Sales or For Information Call:
Cell: 660-341-9974 • Sale Barn: 660-397-9999
Weekly Sales Start At 12:30 PM

CONSIGNMENTS WANTED
For Machinery Consignment Auction
FARM & LIVESTOCK EQUIPMENT
West of Holiday Lake, Brooklyn, IA
Saturday, April 2, 2011 • 10:00 AM

Contact:
Kaufman Auction Service
Curt Kaufman 641-295-3299
Damon Murty 641-485-9471
Advertising Deadline-March 24



2006 Harley Nite Train, Sissy Bar, Super Trap Pipes, Hi-Flo Air Cleaner, Drag Bars, Windshield, 3400 Miles

\$13,995

C&C Cycle
Chariton, IA • 888-475-2243
www.cc-cycle.com

Iowa Cattlemen's Association

ICA


Performance Test Bull Sales

Bloomfield Livestock Auction Market
March 21 • 6:30 p.m.
22 Angus • 5 Simmental
PLUS 11 Fall '09 bulls!
Bulls represent the top two-thirds of each respective breed on-test!
Complete data includes: ADG • WDA
Frame Scores • Ultrasound Data • Pelvic Measurements



Visit www.iacattlemen.org or call ICA at 515-296-2266 for more information or to receive a catalog.

Borntrager Family Auction



Public Auction

Location from LaPlata: take 156 west approx. 5 miles to Rt 3. Go south on 3, 1 1/2 mi. to Helium (gravel road on left). Go east on Helium to auction site on left. **Watch for signs!**
Wednesday, March 23rd, 2011 at 10:00 am

Machinery

J.D. 28" threshing machine • J.D. Big 4 hay mower
2-McCormick grain binders (1 for parts)
2-McCormick corn binders (1 needs new wood)
J.D. 1 row foot guided cultivator • J.D. side delivery rake
5 wheel hay rake • 8 ft. single disk • J.D. 12 ft single disk
A.C. 15 ft. single disk • 2-J.D. 10 ft. single disks
J.D. 2 bottom tractor plow • EZ Flow lime spreader
N.H. 352 grinder mixer • Kewanee 500 40ft. elevator
J.D. Model E manure spreader (needs repair)
flare box (needs new bottom) • flare box on steel gear
wagon gear on rubber • wagon on steel with light rack
forecart • 75 bu. Knobview manure spreader
J.D. gas power unit 90 hp. On steel gear
J.D. no. 3 hay mower (needs repair)
bale stabber with winch mounted on wagon gear
6 ft. tandem disc • old steel wagon wheels
antique Oliver one bottom plow (horse drawn)
rubber tires on wheels

Horses

7 year old black Percheron, mare in foal. (well broke)
4 year old black Percheron gelding (well broke)
4 year old grey Percheron gelding (well broke)
3 year old grey Percheron mare (well broke)
Team of Halflinger-Shetland cross mares
(4 & 6 yr old full sisters, chestnut sorrel)
(broke to ride and drive, traffic safe)
3 year old bay Standard Bred mare,
(broke, traffic safe will make a family driver)
Yearling black, Percheron colt,
(son of the 7 year old Percheron mare)
Yearling dunn sorrel Quarter Horse, filly

Dairy & Hog Related Misc Items

400 gal. milk keeper bulk tank • old 10 gal. milk cans
several S.S. 13 qt. pails • S.S. 16 qt. milk strainer
galvanized milk strainer • S.S. vat • milk crates
pig creep feeders some S.S. • hog feeders
Mira Fount hog waterer • hog chute with head gate
wire panels • 3- 15' x 15' Quonset buildings
16' x 30' heavy steel frame for hog shelter

Shop, Buggy & Horse Related Items

single top buggy with fiberglass wheels • saddles
set of 4 fiber glass buggy wheels • small pony cart
two horse 4 x 8' farm sled • 4-sets of draft harness
2-3-4 horse eveners • several new wagon tongues
old harness hames • several horse bale rings
buggy lanterns with boxes • J.D. & N.H. baler parts
binder canvas • 500 gallon poly tank • roof jack
2- 300 gallon fuel tanks (one on stand) • shovels
cutter pipes and goose necks • post hole diggers
mauls • steel post drivers • fence anchors • leg vice
fence stretchers • pipe wrenches • breast drill
old post drill • v-belts • flat belts • some endless belts
pruning shears • ice tongs • reel lawn mowers
power lawn mowers (for parts) • tool pouches
New Blue Max 2.4 hp. Engine • hand water pumps
old doors and windows • Budget one ton chain hoist
New 2" self priming transfer pump • railroad ties
Hedge corner posts and line posts
small tack building 7'x10'
approx. 100 square bales of wheat straw

Household Items

Ashland New Decade cook stove • refrigerator
Baker's Choice cook stove • 3 pc bedroom set
2- 3 burner oil stoves • Coleman gas lanterns
No. 32 Porkert meat grinder with transmission
No. 22 Universal meat grinder • pressure cookers
knives & plates for No. 22 • Enterprise meat grinder
6 yr. crib • high chair • 3 dressers • nightstands
2 couches • rocking chair • Hickory rocker
3 drawer desk • 5 drawer dresser • Lazy chairs
laundry tubs • blue fruit jars • bunk beds
Tupperware • dishes • tomato boxes
books and puzzles • barbells • ice skates

Amos & Betty Borntrager
24303 Helium St.
LaPlata, MO 63549

Lunch & Bake Sale by Amish Ladies

FOX AUCTION SERVICE Jr. Fox: 660-341-1453
www.foxauctionservice.com Kenny Fox: 660-216-0700

Terms: Cash or check with proper I.D.
Not responsible in case of accidents or theft.
Announcements made day of sale take
precedence over any advertising.

FOR SALE: E-Z Quality Manufactured Housing, Hamilton Homes.
816-583-2177 3-11

FOR SALE: 3 Bedroom, 1 Acre, Fixer-Upper, Princeton, MO. Owner Financed, \$199/m & 5 FREE Months w/Only \$999 Down.
www.moassets.yolasite.com
573-269-4603 3-11

FOR SALE: Must Sell 32x80 Custom Kitchen, Stainless Steel Appliances, Save \$10,000. Hamilton Homes.
816-583-2177 3-11

FOR SALE: 58 Acres, 51 Good Tillable Cropland Acres, Excellent Hunting, Borders CRP Land, \$2,500/Acre; Returns 4.5% to 5% On Investment.
Carroll Co., MO.
660-329-1106 4-1

FOR SALE: New 3 Bedrooms, Vinyl Siding, Shingle Roof, \$187 A Month, Delivery & Set Up Included. Hamilton Homes.
816-583-2177 3-11

STANDING TIMBER WANTED: Walnut, white & red oak, cherry, maple, etc.
Perry Log & Lumber
660-727-3471 or
660-216-0604 cell 3-11

FOR SALE: Lowest Prices, Best Plans, E-Z Financing. Hamilton Homes.
816-583-2177 3-11

LOOK: 14.5 Acres Good Hunting, Fishing, 4 Bedroom House, New Furnace, AC, 2006, 40x48 Insulated Heated Shop, 2001, \$160,000.
641-660-4790 3-11

FOR SALE: 253 M/L Acres, 118 Tillable, 100 Plus Pasture, Timber, Wooded Draws, NE Missouri.
641-396-2156 3-25

Another Auction by Fahey

Mid Country Equipment Consignment
Saturday, March 19 - 9:00 a.m. cst

"Serving the Upper Midwest Since 1947"

AUCTION

Lathrop Antique Show Grounds
2488 S.E. Hwy. 33, Lathrop, MO - (30 miles North of Kansas City, MO)



For more information, many photos and current list of items visit:
www.faheysales.com.
***Including a complete landscape equip. dispersal and a large asst. of trees.

Multiple Rings All Day.
Online Bidding on major items.

Still Accepting Consignments

Auction Manager:
Chris Riley, Kearney, MO
816.365.7565
chrisriley@faheysales.com

Auctioneer:
Jim Fahey, Minnesota
888.234.3510
hutch@faheysales.com

9th Annual Spring Consignment Machinery Auction

Saturday, April 2nd @ 10:00 AM

Sigourney, IA

CONSIGNMENTS WANTED

Now Accepting Consignments, One Piece Or A Full Line Of Equipment.
Held At Keoco Auction Co. Yards.

Advertising Deadline: March 23 By 12:00 Noon
To Consign Please Call:

Abell Auction & Real Estate, LLC
Justin Abell, Sigourney, IA
641-660-8048 or 641-622-3181
www.abellauction.com

Sieren Auction Company
Randy Sieren, Fremont, IA
641-777-9039 or 641-933-4832
www.tsauktion.net

PUBLIC AUCTION

Saturday, March 12th • 10:00 AM

Dave's Place

Everything Sells to One Bidder For One Money!

Hundreds of Games - Movies - DVDs - Gift Items - Tools - Computers
Sporting Goods - Clothes - Shelving - Display Cases
Miscellaneous Merchandise Too Numerous to Mention.

Doors Will Open 8:00 AM Saturday, March 12th
& Entire Contents Will Sell at 10:00 AM.

Everything Must be Removed by April 1st

Deposit Required From High Bidder. If Everything is Not Removed By April 1st Deposit Will be Kept.

(Approximately Two Semi Loads)

Located at: 1003 South Missouri St (Hwy 63) Macon, MO 63552

TERMS: Cash or Credit Card. If Check, It Must Clear Bank Before Merchandise is Removed. Not Responsible for Loss or Accident.

Don't Be Late! Sale Will Be Over By 10:15 AM!

Sale Conducted by

COMPTON'S AUCTION
Callao, MO 63534
660-384-3838

FOR SALE: New Homes, 6" Walls, Thermo Windows, Starting At \$25,995, AC, Set-Up. Hamilton Homes. 816-583-2177 3-11

FOR SALE: 9 Acres or 12 Acres, Tillable, Well Kept, 2-Story Home, Hard Surface Road, 7 Mi from I-80, 54 Mi from C1, 1/4 Mi From Town, \$135,000. 712-764-5777 3-11

Warren County Land Auction

PEOPLES COMPANY
INNOVATIVE. REAL ESTATE. SOLUTIONS

APRIL 2ND, 10 AM

Rudy's Rendezvous, Lacona, IA

Farm is 2 miles E of Lacona on G76 1 1/2 mi North on S31; 187 Acres with 183.6 acres tillable. Average CSR of 68 on tillable soil. Farm is loaded with tile & ready for 2011 corn crop. 22.5 acres of CRP set to reprice on 8-30-2012. Current payment 160 per acre.

Daran Becker • 515-979-3498

daran@peoplescompany.com

Listing #1693 www.PeoplesCompany.com

RED POWER

APRIL 2nd, 2011

Influence Bull & Female Sale

Appanoose Co. Livestock Inc
Centerville, Iowa • 1:00 p.m.

- 40 Yearling Red Angus Bulls
- 20 Open Yearling Reg. Red Angus Heifers, sold in group lots of 5
- 10 18 month-old Red Angus Bulls

Industry leading sires represented include:

Sakic • Full Throttle
Packer • IMF
Mission Statement • Big Sky
Makin Hay • High Capacity
Basin Sensation
PIE Redmond 3170



Brought to you by these progressive breeders:

Batterson Red Angus
Jason Batterson
Bloomfield, IA
641-777-4383

Vulture Acres Reds
Sandie Martsching
701-840-2890
dldoc@hotmail.com

Mathes Farms
Dana Mathes
Unionville, MO
641-895-9131
dsmathes@newmr.net

Auctioneer
Kyle Gilchrist, 641-919-1077

Please call for Catalogs!

FARM AUCTION

FRIDAY, MARCH 25, 2011 • 11:00 A.M.

SHANKS CATTLE COMPANY

CHARITON, IOWA

DIRECTIONS: FROM CHARITON, IA-NORTH 1/2 MILE ON HIGHWAY 14; WEST 2 MILES ON H-30 (495 TH ST) TO STOP SIGN, NORTH 1/8 MILE ON 215 TH AVE.

NOTE: DUE TO THE DEATH OF SID SHANKS, WE WILL SELL THE FOLLOWING ITEMS.

TRACTORS-DOZER: '04 C-IH STX 450 4WD; PS; 710X38 DUALS; 4120 HRS; '98 C-IH 8920 MFD; CHA; 18.4X38 DUALS; UNKNOWN HRS; '71 IH 1466 CHA; '64 IH 806 DSL; WF; 18.4X34; 200 HRS ON OH; '90 CAT D6H SERIES II, LGP; CAB; 38" TRACKS; CUB 1650 LAWNMOWER.

LIVESTOCK EQUIP: FOREMOST 375 SQUEEZE CHUTE W/30 HEAD GATE; FOREMOST CROWDING TUB; FOREMOST ALLEY WAY; (17) PRIEFERT 12" CATTLE PANELS; MISC GATES, CREEP FEEDERS, FEED BUNKS; '95 DIAMOND 16" GOOSENECK LIVESTOCK TRAILER.

PICK UP-CAMPER: '99 SALEM 31' 5 TH WHEEL CAMPER, SUPER SLIDE, AC. '89 FORD F-150, 4X4.

IMPLEMENTS: 2010 SCHULER HF 255 FEED WAGON, SCALE, LIKE NEW; KMW 1760 LOADER, C-IH MTGS; W-DORF TA 25 LOADER, IH 806 MTGS; JD 535 BALER; C-IH 8312 DISC BINE; DANUSER POSTHOLE DIGGER; BLUE JET 7 SHANK RIPPER, PULL HITCH; WOODS 3180 BATWING MOWER; PANORAMA 10 WHEEL RAKE; 6 BALE GOOSENECK HAY TRAILER; IH 45 30' FLD CULT; IH 480 18' DISC; 4 SECTION HARROW; M&W 400 WAGON; OLD FORAGE WAGON; BUSHNELL 165 GRAVITY; TANDEM GRAIN-O-VATOR; 8' FAST HITCH BLADE; BALE MOVER; BALE UNROLLER.

MISC: (3) 500 GAL FUEL TANKS; MILLER WELDER-GENERATOR; AIR COMP; BATTERY CHARGERS; COLEMAN 4200 ER GENERATOR; LB WHITE HEATER; SHOP TOOLS; NEW CRAFTSMAN TOOLBOXES; WELDER; MISC SHOP TOOLS & PARTS.

FOR MORE INFO: TRAVIS SHANKS 641-344-7095



Sale Conducted by

Colo, IA • 641-377-2355

www.dailyauctioncompany.com

Over 45,000 Copies Circulated Each Week!

PUBLIC AUCTION

Conducted By

AUCTIONS UNLIMITED

Since We Are Moving Out of State, We Will Sell the Following Items at Public Auction Located 5 Miles East of Centerville, IA on Hwy #2 Then North on 265th Ave 1/4 Mile to 20843. Follow Auction Signs on

Saturday, March 19th, 2011 • 10:00 am

PICKUP-4 WHEELER-TRAILERS-BOATS-CAMPING: 1998 4x4 Ford F150 Pickup w/3 Drs, Auto & Air, Only 76,000 Actual Miles; Kawasaki 4x4 4 Wheeler w/Flat Proof Tires & Warn Winch; 7'x10' Alum Tilt Trailer; 5'x10' Trailer w/Tilt Bed; 5'x10' Trailer w/Ramp; 5'x8 1/2' Wells Cargo Enclosed Trailers; Pair of 600# Alum 7' Loading Ramps; Hitch Haul Rack; Pickup Trailer Adaptors; Heavy Tie Down Ratchet Strap; 10' Flat Bt Boat; Paddle Boat; Sev Life Vests; 6 Gal Horizontal Propane Tank; 4 & 5 Gal Propane Tanks; Propane Infrared Port Heater; Propane Turkey Cooker; 12V Travel Cooler/Heater; 4 Sterno Canned Heat; Emergency Road Kit; 5 Business Ban Radios w/Power Supplies; 12V 250 Lb Air Compressor.

JD TRACTOR & EQUIPMENT: 1990 JD 2355 2WD Tractor w/Cab, Only 3414 Hrs; JD 520 Loader; Pallet Forks for JD Loader; 8' Bush Hog 3008 Bush Cutter; 6 1/2' Rail Drag.

TOOLS & SHOP: Power Craft 295 Stick Welder; Welding Helmet; Superior 12 Sp Floor Drill Press; Craftsman Router/Saber Saw; Craftsman 10" Table Saw; Skil Orbit Scroll Saw; Craftsman Mitre Saw; DeWalt Cut Off Saw; B&D Elec Navigator Hand Saw/Jig Saw; 75# Anvil; 5" Bench Vise; 3/4HP 8" Bench Grinder on Stand; Pipe Vise; 10" Buffer; 18" & 24" Pipe Wrenches; Set of 4 Pipe Clamps; 18" & 24" Bolt Cutters; 4' Steel Drywall T Sq; Hydro Jacks; Propane Torch w/Tank; 24' HD Jumper Cables; Battery Charger; Steel Toolbox; Grease Guns; 2-200 Lb Cable Winches; Coleman Air Compressor; 5 Gal Air Tank; 850 Watt 12V-120V-2 Cycle Generator w/12V DC Booster; 5KW 12V-120V-240V Generator w/Honda Engine; 42" Industrial Elec Fan on Wheels; 115V Sm Elec Pump; 2-16' Log Chains; Hard Hats; Heater Hose; 14' Alum Ext Ladder; 7' Collapsible Alum Ladder; 6' Alum Stepladder; 5 & 6 Gal Shop Vacs; Creeper; HD Steel; Shelving; 36" x 7 1/2" Rotating Parts Shelf; Stihl 025 & M5280 Chainsaws; Husqvarna Leg Protection Garment; Log Splitter w/Tecumseh Engine; Chainsaw Sharpening Tools; 13 Cord of Oak Firewood in Outside Steel Racks; 300' of 2" Collapsible Waterhose.

JD MOWER-YARD-GARDEN-MISC: 757 JD Zero Turn Radius Riding Mower w/60" Deck, Only 188 Hrs, Like New; Tiller w/Tecumseh Engine; 25 Gal Pull Behind Sprayer w/Boom; Leaf Blower; Yard Carts; Wheelbarrow; Extended Reach Tree Trimmer; 100' Rubber Garden Hose; 20' Collapsible Hose; Weber Barbeque Grill w/Rotisserie & Access; 4 Patio Swivel Rocking Chairs w/Glider & Cloth Cushions; Reclining Patio Chairs; 6 Plastic Stackable Patio Chairs; 10 Gal of Sea Shells; Nut Cracker & 5 Bags of Black Walnuts; Ass of Yard & Garden Tools; 5 Partial Pallets of New & Used Bricks; Gas Cans; 26" Schwinn 10 Sp Bike; Baby Yard Swing; Bad Mitten/Volleyball Set; Trash Cans; 2 New Bug Suits; 3 Prs Snake Guards; Elec Insect Killer; Sm Animal Trap; Gopher Trap; Pet Taxi; Zareba 25 Mile Elec Fencer; Posthole Diggers; Barbed Wire Stretchers; Misc Wire; Elec Fence Insulators; 2 Internatic Time Switches.

ANTIQUES: Hand Crank Corn Sheller; Surveying Equip; 24"x42"x3/4" Solid Black Slate; 1250 Marbles; 33 1/3 Records; William L Gilbert Mantle Clock; 25 Asst Pocket Knives.

HOUSEHOLD-TREADMILL: Roper Refrigerator; Amana Upright Self Defrosting Freezer; Maytag Washer; Kenmore Dryer; Microwave; Oak Ent Center; 3 Deluxe Oak Custom Order Swivel Bar Stools; Loveseat; Glider Rocker; 4 Twin Beds, Comp; Nice Linens of All Types; 4 Pc Desk/Bookshelves; Ping Pong Table; Hoover Self Propelled Vacuum; Hoover Concept 1 Steam Vac Shampooer; 2 Bissell Carpet Sweepers; 2 Halogen Floor Lamps; Mitsubishi Synthesizer Set w/Tuner, Stereo Graphic Equalizer, Stereo Double Cassette Deck, Stereo Integrated Amplifier & 2-16"x40" American Acoustic Speakers; American Harvest Jet Steam Oven; Under the Counter B&D Coffeemaker; Sm Kitchen Appliances of All Types; Pots & Pans Inc Revere Ware, Faberware & T-Fal; Stainless Steel Tableware; Presto Pressure Pan; Card Table & Chairs; Books Inc Children's; Honeywell Elec Heater; Christmas Lights; Books; VCR Tapes; Luggage; 4 Pc Fireplace Set; Aloe Vera & Airplane Plants; Cadence 6.0 Auto Incline Treadmill. 50 Plus Caps; Other Items Too Numerous to Mention. All Announcements Day of Sale Take Precedence Over Written Material.

Auctioneers Comment: This is a Very Clean Line of Items. The Watleys' Have Always Take Care of Their Things, So The Look & Work Like New. You Won't Want to Miss This Auction.

For Pictures Go To www.auctionsandrealtyunlimited.com.

DALE & DOLORES WATLEY: OWNERS

AUCTIONS UNLIMITED

David Zaputit
641-724-3329

Richard Wilson
641-724-9243

Terms: Cash
Lunch Served

NO BUYER'S PREMIUM **LUNCH BY CHUCK'S CHUCKWAGON**

ANNUAL ST. PATRICK'S DAY MACHINERY CONSIGNMENT AUCTION

Thurs., March 17th • 9:00 A.M.
135 Albia Road • Chariton, IA

Yard Open Now & Sat, March 12th • Accepting Consignments

PARTIAL LISTING! EXPECTING MORE BY SALE DATE!

NH 510 manure spreader, skidloader forks, pallet forks, JD 3 pt. 305 A rake, NI 3 pt. rake, Int'l field cultivator 26', water tank, hog feeders, JD 7' wheel disc, 3 pt. blade, Case IH 900 planter 12R30 w/trash whippers, 5400 Case IH no till drill w/ yetter cart, 7000 6 row w/ liquid fert., Danuser 3 pt post hole digger, 3 pt. wheel track eraser, bale forks, 3 bottom plow, Hardi trailer sprayer, JD 4440, IH 900 6 row planter, JD 230 disk, 800 Series Ford w/ loader, 445 A Ford with shuttle, loader & 3 pt, NH 846 baler, Gehl Grinder Mixer, IH 435 Square Baler, NH 268 Square Baler, Westendorf pallet fork, 3 bottom plow, 3 pt. ferguson cultivator, 3 pt. 5' chisel, Honda 350 4-wheeler 4WD, mount on ATV sprayer, mount on ATV dry fert. cart, Tyler 4 ton fert. cart, 2 pt. 8' fast hitch blade, flare wagon, gravity flow box, cultipacker, hedge posts, 7000 JD 4 row planter, JD 7200 8 row wide, flex liquid fertilizer, front fold, 1998 JD 1780 16 row 30" planter, w/ green star monitor, 3 bushell boxes, taft closing wheels, pneumatic down pressure, vacuum planter, corn & bean disc, JD 7000 16 row 30" planter - converted to maximerge, plus back row units, corn & bean discs, numerous misc.

DDLN Farms LLC Closeout to Include (Partial Listing): J&M 600 bushell wagon; pair front tires; Corey wagon on JD gear; pair of duals; Lundell wagon w/ auger; 1 dual; J&M green wagon; misc. tires; Unverferth wagon; Parker wagon on JD gear; Owatona 596 series 2 round baler; IH 14' disc; 24' Daycon disc; 60' quaker drain auger; 514 manure spreader; Pixel 100 B&B rotary mower; NH 972 20' grain table.

CHARITON FARM MACHINERY AUCTION, INC.
135 Albia Road • Chariton, IA • Office: 641-774-4615
www.charitonauction.com

AUCTION COMPLETE FARM DISPERSAL & INVENTORY REDUCTION

SATURDAY, MARCH 26, 2011 • 9:30 AM
CENTERVILLE AUCTION CENTER
HWY 5 SOUTH & GREEN ST, CENTERVILLE, IA

IH TD20 Series C, 206HP, powershift; '08 New Holland T6030 Tractor 420 hrs, 16 spd, CHA, FWA, Sunroof, w/Westerndorf 360 Loader w/level-up; IH 1566 Tractor, 5200 hrs, bad torque, CHA w/IH 2250 Loader; JD 535 Round Baler, new belts 2010; Howard Power-Arm 3 pt Backhoe; Great Plains Solid Stand 15 No-Till Drill w/small seed boxes; OTC 25T Porta-Power; '68 Firebird 350, 400 auto (1 in restoration, 1 parts car, many additional parts, 3 trany's, 2 blocks); 20' Livestock Trailer-new floor; 20' & 24' GN Trailers; 1970 GMC 1500 6 cyl, 250, 2WD; Heston 1160 Hydra-swing MoCo, new no-clog guards; Durabilt 8 Wheel V Rake; Unverferth Bale Wrapper/Unroller; 273 New Holland Square Baler w/Farmhand Accumulator & Grapple 18' IH Vibrashank 3 pt Field Cult; IH 55 Chisel Plow; '06 Ford F250 Pickup (super duty, 4x4, D, ext cab); 20' & 25' Ball Hitch Trailers; 6+2 Bale Trailer w/3 pt stabber; Aux Fuel Tank; Ritchie Sprayer 40' w/Foam markers; JD 37 Sickle Mower; Dearborn 4 Bar Rake; 4 Section Harrow w/ cart; 25' Bale Elevator; 30' Barn Elevator; Gravity Flow w/JD running gears & cover; Korker Gravity Flow w/Kewanee running gears; Flare Box Wagon w/50+ bu Wheat; Pop-up small Bale Loader; 100 gal Fuel Tank w/elec pump; 140 JD Mower (bad engine); 3 pt Bale Stabber; 4x Large Round Bales Grass mix, 1st cutting 2010; Small Sq Bales 2nd cutting Red Clover; Small Sq bales 2nd cutting Grass; 8 Hay Rings; 11 Feed Bunks; Vet Supplies; Acetylene Torch w/ contracts; Lincoln AC/DC Welder; Parts Washer; Big Wrenches; Tools.

SELLER: JIM D. SUTTER

ALSO SELLING: D8 E Cat Dozer-hyd blade, man trans; D6 C Cat Dozer-power shift, hyd blade, hyd tilt; 307 Cat Excavator; 6510 Ditch Witch Trencher-no backhoe on front; Bradco Trencher attach for skidloader, like new; 1989 Freightliner Dump Truck; C65 Dump Truck; Totemall Pintle-Hitch Trailer; Farmall M Tractor; Farmall 560 Tractor; Lime Conveyor Elevator; 4R JD Cornhead; 1995 Chevy 3500 2WD-1T dually Pickup, 127,000 miles; 1972 Chevy Pickup, 2WD; New Idea Elevator; Posthole Digger; 10' Disk; JD 12' Field Cult; JD 1R Cult; Misc Steel Equip; New gates, wire, fencing supplies & misc farm items.

TO VIEW AD & PICTURES, GO TO:
www.missouri-iowa-classifieds.com/Demry-Auctions.html
 Terms: Cash or Good Check w/photo ID Nothing Removed Until Settled For
 Not Responsible for Accident or Theft
 Announcements day of sale takes precedence over Advertising

DEMRY AUCTION SERVICE
TOM DEMRY TOM R. DEMRY
641-895-4072 • 641-856-6408 • 641-895-2508
JUNIOR LAWSON 641-208-2454

CLIP & SAVE

It's Truck Month At Lovegreens

NEW

#113039
2011 FORD FOCUS SE
 4 Cyl, Automatic, Air Conditioning,
 Fully Loaded,
 Was \$19,060
NOW ONLY \$14,983

NEW

COME SEE IT!
THE ALL NEW 2011 FORD EXPLORER 4X4
 w/My Ford Touch Sync., Rear View Camera, Voice Activated Navigation

It's Truck Month At Lovegreen Chrysler In Kirksville And The Premier Event Is Here.
 You Can Save **\$1,000's** w/Zero Financing Plus You Get A Charged Hemi

It's Truck Month At Lovegreen Ford In Kirksville.
 You Get Zero% Financing **PLUS \$2,000** On All 2011 F150's

All Manufacturer Rebates, Farm Bureau & Commercial Rebate Applied. Must Finance Through This Office, \$65 Administration Fee. See Dealer For Details.

 1998 FORD EXPLORER XLT 4x4, V6 Automatic, Air Conditioning, Only 73,000 Miles, Nice Local Trade!	 2005 DODGE DAKOTA SLT Club Cab 4x4 4.7 V8 Automatic, Air Conditioning, Nice Local Trade, SAVE BIG!	 2000 FORD F150 XLT 4x4, V8 Automatic, Air Conditioning, Only 66,000 One-Owner Miles! It's Outstanding, #106541B	 2004 BUICK LESABRE 3800 V6 Automatic Air Conditioning, Fully Loaded, Extra Nice, Trade In!	 2006 FORD F350 LARIAT CREW CAB 4X4, 6.0 Powerstroke Diesel, Automatic, Air Conditioning, Extra Seating, Fully Loaded!
 2007 FORD F150 SUPER CAB XLT 4X4, 5.4 V8, Automatic, Air Conditioning, Fully Loaded, Nice Local Trade!	 2005 DODGE GRAND CARAVAN SXT V6 Automatic, Dual Air Conditioning, Stow & Go SAVE SAVE SAVE	 2008 FORD F250 Supercab Lariat 4x4, 6.4 Powerstroke Diesel, Auto, A/C, Leather Seating, Fully Loaded, Only 10,000 One-Owner Miles! SAVE THOUSANDS	 2008 FORD F250 XLT Crew Cab 4x4, 6.4 Powerstroke Diesel, Auto, Air Conditioning, Fully Loaded, SAVE BIG!	 2008 MERCURY MARINER V6, Auto, A/C, Moon Roof, Fully Loaded, Extra Nice, Only 20,000 Miles!
 2006 FORD F-350 XLT 4x4, Dually Cab & Chassis, Powerstroke Turbo Diesel, Automatic, Air Conditioning, Fully Loaded, New Tires, Nice One Owner Truck	 2008 FORD E350 XLT Passenger Van, 5.4 V8, Automatic, A/C, Extra Nice, Local Trade! HARD TO FIND!	 1998 FORD F150 XLT Supercab 4x4, V8 Automatic, Air Conditioning, Fully Loaded, Was \$9,990 NOW ONLY \$7,645	 2006 FORD FIVE HUNDRED SEL V6 Automatic, A/C, Leather Seating, Fully Loaded, Extra Nice, Local Trade, SAVE!	 2008 CHRYSLER TOWN & COUNTRY TOURING, V6, Automatic, Air Conditioning, Stow & Go, Fully Loaded! Save Thousands! Two To Choose
 2005 CHEVY SUBURBAN LTZ71 4x4, 5.3 V8, Auto, A/C, Leather Seating, Remote Start, DVD System, New Tires, WOW! It's Nice!	 2007 CHEVY HHR V6, Automatic, Air Conditioning, Just Traded For!	 2007 TOYOTA COROLLA S 4 Cyl. Auto, A/C, Leather Seating! Moonroof, Navigation, Only 8,000 One-Owner Miles! WOW	 2007 CHRYSLER TOWN & COUNTRY TOURING V6, Automatic, Air Conditioning, Fully Loaded, Extra Clean, Locally Owned	 2005 FORD EXPLORER XLT 4x4, V6, Automatic, Air Conditioning, Extra Nice, Local Trade
 2006 FORD F350 LARIAT Crew Cab, 4x4, 6.4 Diesel, Automatic, Air Conditioning & More	 1997 CHEVY S10 BLAZER LS 4X4 4.3 V6, Automatic, A/C, Fully Loaded, Was \$7,990, NOW ONLY \$4,995	<p>Service Specials To Protect Your Investment</p> <p>Fuel Service \$107.95</p> <p>Transmission Flush \$142.95 Ford \$152.95 Chrysler (some vehicle slightly higher because of fluid prices)</p> <p>Coolant Flush \$95.99</p> <p>Power Steering Flush \$69.95</p> <p>Stop by or call and ask Jay or George about Factory recommended maintenance that prolongs the life of your vehicle!</p>		 2010 TOYOTA TACOMA Double Cab SR5, 4x4, V6, Auto, A/C, JBL Sound System, ALL THE OPTIONS, NICE ONE-OWNER TRADE
 2009 CHRYSLER SEBRING LIMITED, V6 Automatic, A/C, Leather Seating! Lady Driven! Never Been Smoked In! Only 6,000 One-Owner Miles	 2007 MITSUBISHI ECLIPSE GT SPYDER CONV. V6 Automatic, Air Conditioning, Only 23,000 Miles! WOW! IT'S NICE!	 2004 FORD EXPLORER LIMITED 4X4, V8 Automatic, Air Conditioning, Moonroof, Leather Seating	 1999 CHEVY MONTE CARLO V6, Automatic, Air Conditioning, ONLY \$3,883	
 2008 DODGE NITRO SXT 4x4, V6, Automatic, Air Conditioning, Nice One-Owner Trade!	 2003 DODGE RAM SLT Quad Cab, 4x4, 5.7 Hemi, Automatic, Air Conditioning, SAVE	 2002 FORD TAURUS SE V6 Automatic, Air Conditioning, Fully Loaded, Was \$5,990 NOW ONLY \$3,983	 2008 TOYOTA AVALON XLS, V6, Automatic, Air Conditioning, Leather Seating, Moon Roof, Navigation, WOW! Save Thousands!	
 2009 CHEVY COBALT LT, 4 Cyl, Automatic, Air Conditioning, Fully Loaded! Was \$12,990 NOW ONLY \$10,684	 2001 FORD RANGER XLT Ext Cab 4 Door, V6 Auto, Air Conditioning, Nice Truck	 2008 FORD TAURUS LIMITED Super Nice & Loaded w/Equipment	 2006 GMC SIERRA 4x4, V8 Automatic, Air Conditioning, Fully Loaded	

For Pre-Owned Vehicles Prices & Photos Check Out www.golovegreen.com

We Buy Used Cars! Call Jim Perry 660.665.2828

LOVEGREEN

Stop by or call and ask for Jay or George

1801 N. ELSON • KIRKSVILLE, MO 1-800-500-4966 • 660-665-2828

GUY MCLIN - 660-296-9919 • JIM PERRY 660-665-2828 • STEVE SWINDLER - 660-379-2624

RICK JOHNSON - 660-342-2936 • JAMES WILLIS - 660-341-1644 • CHUCK HAYES - 660-299-0700

CONSIGNMENT SALE

APRIL 2ND, 2011

WANTED: Your Farm Equipment & Construction Equipment for Upcoming Auction

At

**McWhirter Equipment Company
Baxter, IA**

**Brian 641-521-2702
Reed 641-521-1285**

www.bmauction.com



**2003 Harley 1200
Custom Sportster,
Anniversary,
Screaming Eagle
Mufflers, Chrome
Oil Tank,
Windshield,
Only 2490 Miles**

\$5,995

**C&C Cycle
Chariton, IA • 888-475-2243**

www.cc-cycle.com

**MTMH: REPOS, REPOS, REPOS:
MOBILE HOME,
Double & Single
We have access,
3 & 4 Bedroom, Financing,
Mark Twain Homes
in Farber, MO
573-249-3333**

**FOR SALE: 16' Aluminum
Lowes fishing boat, boat trailer,
40hp motor with rolling motor.
\$2,000 OBO. Call after 5PM or
weekends
573-721-0806 3-18**

**FOR SALE: 1978 Trooper
Travel Trailer, 27' long, good
condition, sell for \$1,750 cash.
www.drcarlot.com
217-653-7480 3-11**

**FOR SALE: 2008 Harley Street
Glide King Tour Pack, Extra
Sissy Bar, True Duals, Blue
Custom Pinstripe, 1000 Miles,
Like New, \$17,500. Call After
6:00PM
641-828-8135 3-18**

Your Hawkeye Trader
BEST COVERAGE • BEST RATES!

Public Auction

"We sell it the day you need it sold!"

Sunday, March 27, 2011

12:00 PM

1108 Wallace, Casey, IA



Real Estate Sells @ 1:00 PM



General Description: Offering 11 acres M/L w/home. This house has 2 bedrooms, 1 bath & a full basement. Also located on the property is an outbuilding w/built in horse stalls & a tack room. The pasture is surrounded by excellent fencing as well.

**Legal Description: LOTS 8 & 9 NOBLES ADD Lot Size 11.29 Acres
Net Taxes: \$702.00/yr**

TERMS: Sold in 'As-Is' condition & w/no contingencies. Announcements sale day supercede printed material. Cash, 10% down payment day of auction w/balance due at closing on or about 30-45 days. Possession at closing. Pre-auction offers can be submitted for consideration until Sunday, March 20, 2011.

Farm Machinery & Equipment
(12) section round pens w/walk gate
JD 726 snowblower (ser# 009196M)
Ariens snowblower (ser # 028356)
Troy Bilt pushmower w/bag (6.75hp)
MTD riding lawnmower, MTD snowblower
(2) 4' drag harrows, wagon gear
MTD 22' high wheel pushmower
MTD 3.5hp pushmower, (2) hyd points
Homemade trailer, farm primitives
Toyota pickup truck (scrap)
(4) large round bales of hay



JD 4010 (6 cyl, diesel ser # 21T-43576)



Oliver 62 sq baler



Ford 601 Workmaster



King Cutter bush hog 5ft., 10hp gear box

Shop Tools & Horse Gear
Rigid 12' table saw, B&D mitre saw
Skill saws, Hose reel, hand tools
(4) alum rims (31-10-5-15)
Graco 395 paint sprayer
stainless steel shelving
Bostitch air nailers, B&D 8' drill press
Stacks of steel barn siding
(2)saddles (1 Western)
Horse tack, blankets, ropes
bridles, buffet for tack storage

Antiques & Home Furnishings
Lane cedar chest, drop side table
dresser sets, Bentwood chairs
small drop front desk, Antique blanket chest
dovetail boxes, tin types
Redwing spongeware bowl
store scales, Kitchenware
Mission style coffee & end tables
Antique oak office chair
Singer sewing machine
2 fur coats, Sony color TV
Wesson oil crock
Dining room table w/4 chairs
Indian post cards
Many more items too
numerous to mention!!



China hutch



2 door cabinet



1942 list of Des Moines Civil War Soldiers Civil War photo w/10 soldiers



Ashley leather couch, loveseat & chair (12) section round apen w/walk gate



JD #5 sickle mower



MF hay rake 8 ft

**FOR SALE: New Doublewide,
6" Walls, Thermo Windows,
\$38,995, Delivered. Hamilton
Homes.
816-583-2177 3-11**

**FOR SALE: 14X68 Laser
Mobile Home, Steel Roof
and Sides, 6" Walls, New Vinyl
Windows, Water Heater,
CA, Stove, Refrigerator, Dish
Washer, 3-Bedroom, 1 Bath,
\$12,750 OBO Delivered. Leave
Message.
641-898-2337 3-11**

**FOR SALE: Used Double-
wides, 3 To Choose From,
Save \$1,000s. Hamilton
Homes.
816-583-2177 3-11**

**KISS YOUR LANDLORD
GOODBYE! BAD CREDIT,
NO CREDIT! 10% Down On
Brand New Three Bedroom
Double-Wide, Special Financing
Offer For a Limited Time.
Call For Free Pre-Approval
Over the Phone. No Application
Refused!
660-665-3098 3-25**

**FOR SALE: Used 16x80, 3
Bedroom, 2 Bath, 6" Walls,
\$189/Mo. Hamilton Homes.
816-583-2177 3-11**

**RECENTLY FORECLOSED:
Special Financing Available,
Any Credit, Any Income. 4 BD,
1 BTH, 2388 Sq Ft, Located
At 104 West Old Main St, Mil-
ton, IA, \$14,900. Visit www.
roselandco.com/7UV. Drive By
Then Call
866-924-8348 3-11**

**FOR SALE: New 2 Bedroom,
6" Walls, Thermo Windows,
\$199/Mo. Hamilton Homes.
816-583-2177 3-11**

**WANTED: Standing Timber,
Oak, Walnut, Maple. Top Pric-
es Paid Before I Cut. Contact
Travis With American Timber.
641-895-3883 3-18**

**FOR SALE: 120 Acres, 78
Tillable in CRP Program Until
2018, Excellent Hunting, Davis
Co. Iowa. Asking \$4,000/Acre.
641-675-3218 TFN**

RECREATIONAL

**FOR SALE: 2004 Fleetwood
Pioneer Camper, 22 Ft., Sleeps
Six, Very Clean, Stove, Couch,
Microwave, Fridge, Freezer,
CD Player, Air Conditioning,
\$8,500.
641-777-9857 3-11**

THE AUCTION CORNER DILLON, IOWA

Sale March 22, 2011 • 5:30 PM

HOUSEHOLD ITEMS: Microwave stand, 2 bookshelves, headboard for full bed, Mitsubishi 22" TV, 2 drawer metal file cabinet, 2 blue velour swivel rockers, loveseat tan/blue & cream, White sewing machine in cabinet w/bench, cedar chest, cane bottom chair, 2 antique pictures, 3 metal folding chairs, Rag rugs, magazine rack, 1 & 2 gal crocks, 8 ft Monroe table, Paul Smith "Edge of the Storm-Canvasbacks" picture, electric ice cream freezer, DVD player, Maytag washer/gas dryer, Lawn Boy 21" 4 HP self propelled Model S21ZSM, metal patio set round table & 4 chairs, 4 ft round oak table, 7 by 9 wool rug.

COLLECTIBLES & ANTIQUES: 2 old laundry tubs, Antique table 24 X 36, Budweiser beer sign, doll furn, Porcelain dolls box of cameras & parts, afghans, several pcs lead crystal, many boxes yet to unpack.

SHOP: lawn cart, hand tools, drop cords & more.

Nothing removed until settled for, we take Cash or Check w/ID, no credit cards. View this sale on Monday from 4 till 6. Sale day statements take Precedence over written material.

Directions from Marshalltown: East on Hwy 30 for three miles then south & Dillon Rd or T 31 for 2 miles.

Visit Us at: www.theauctioncorneria.com

The auction is conducted by

**The Auction
Corner**

**Doug West,
Auctioneer
641-750-5216**



www.theauctioncorneria.com

Land

158 Acres m/l Guthrie County

**Thursday Morn., March 24, 2011
10:00 A.M.**

**Sale Location: Daugherty Auction Facility
223 S 2nd St, Stuart, IA**



"We sell it the day you need it sold!"

**Guthrie
Center**

**Location of Farm:
From Guthrie Center: 9 1/2 miles south on Hwy #25 or north of
Casey on Hwy #25 to 3223 Hwy 25.**

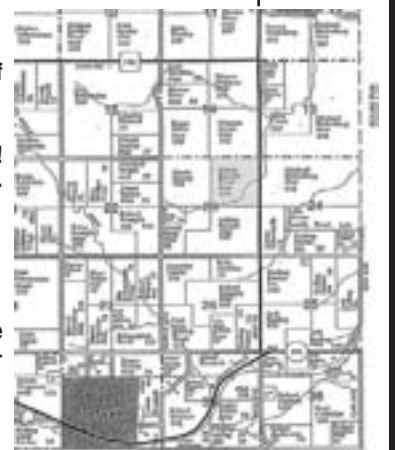
**General Description:
158 acres m/l currently in pasture w/2 ponds! Fenced. Wildlife!
Deer & Turkey! Beautiful view! FSA declares 70 acres cropland.**

Predominate Soil Types: Shelby, Sharpsburg & Olmitz-Colo

Ave. CSR Rating: 31.8

Taxes: \$992.00

**Terms: Cash, 10% down payment day of auction. Balance due
at closing on or about 30 to 45 days. Buyers will have full pos-
session for the 2011 crop year.**



Section 23 Thompson Plat

Merle Bassett Trust, Sellers

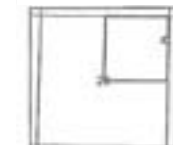
Date Created: 2/28/11 10:38:28 AM

Section 23, T78N R32W, GUTHRIE COUNTY

Daugherty Auction & Real Estate Services, Inc.

Merle Bassett Trust Trust

Average CSR: 31.8
Acreage: 155.00



SMS	Soil Name	Acres	CSR	Corn	Soy	Oat	Alf	Kbg	Wheat	Slope
11B	Cole-Judson	1.75	68.0	132.0	44.0	73.0	4.0	3.0	53.0	2.5%
133B	Cole	3.80	75.0	133.0	45.0	67.0	4.0	3.3	53.0	2.5%
179F2	Gara	10.61	13.0	0.0	0.0	0.0	0.0	0.0	0.0	18.25%
179G2	Gara	9.65	5.0	0.0	0.0	0.0	0.0	0.0	0.0	25.40%
201B	Olmitz-Colo	21.23	5.0	0.0	0.0	0.0	0.0	0.0	0.0	2.5%
24E2	Shelby	0.17	38.0	98.0	33.0	49.0	4.1	2.4	39.0	14.18%
24E3	Shelby Soils	9.78	35.0	0.0	0.0	0.0	0.0	0.0	0.0	14.18%
24F2	Shelby	10.05	18.0	0.0	0.0	0.0	0.0	0.0	0.0	18.25%
24F3	Shelby Soils	29.42	15.0	0.0	0.0	0.0	0.0	0.0	0.0	18.25%
273C	Olmitz	8.41	57.0	132.0	44.0	66.0	5.5	3.2	53.0	5.9%
370B	Sharpsburg	0.23	87.0	153.0	51.0	77.0	6.4	3.8	61.0	2.5%
370C2	Sharpsburg	21.63	67.0	144.0	48.0	72.0	6.0	3.5	58.0	5.9%
370D2	Sharpsburg	11.67	57.0	130.0	44.0	65.0	5.5	3.2	52.0	9.14%
76C	Ladoga	0.10	67.0	139.0	47.0	70.0	5.8	3.4	56.0	5.9%
76D	Ladoga	3.06	57.0	130.0	44.0	65.0	5.5	3.2	52.0	9.14%
76D2	Ladoga	1.34	52.0	126.0	42.0	63.0	5.3	3.1	50.0	9.14%
76E2	Ladoga	5.51	42.0	109.0	37.0	55.0	4.6	2.7	44.0	14.18%
80D3	Clinton	2.91	38.0	108.0	36.0	57.0	4.5	2.7	43.0	9.14%
93D2	Shelby-Adair	1.80	25.0	96.0	32.0	48.0	3.8	2.4	38.0	9.14%
93E3	Shelby-Adair	1.56	5.0	0.0	0.0	0.0	0.0	0.0	0.0	14.18%

Daugherty Auction and Real Estate Services, Inc.
Kelly Daugherty owner auctioneer . Chad Daugherty, Brad Jones auctioneers
Adel, Iowa (515) 993-4159 ~ d_auction@hotmail.com
See us on the web at www.daughertyauction.com

The information in this brochure is from sources deemed to be reliable but it cannot be guaranteed by Daugherty Auction and Real Estate Services, Inc.

The information in this brochure is from sources deemed to be reliable but it cannot be guaranteed by Daugherty Auction and Real Estate Services, Inc.

WEEKLY HAY AUCTION

EVERY SATURDAY AT 10:00 AM

Location: TCS Auction Yard
Directions: 1 Mile South of Ogden on Hwy 169

NEED CONSIGNMENTS

Town & Country Sales • Boone, IA
Gary Blomgren • Auctioneer
Cell: 515-291-1011

TERMS: Cash or Check w/Proper ID. Not Responsible for Accidents. No Sale Items Removed Until Settled For. Announcement Day of Sale Takes Precedence Over Information Published Prior to Auction.

Visit Us On The Web @
www.hawkeyetrader.com

Estate Coin Auction

Sat., March 12 • 11:00 a.m.
Ketcham Center on the NCMC Campus
1322 Mable St., Trenton, MO
Estate of the late Ron Peterie

There are 501 lots in this auction including proof, mint, silver & unc. sets; lots of Kennedy halves; lots of wheat pennies; lots of books of coins & silver coins.

Go to www.northwestmissouri.com & click on auctions to view lots & order of sale.

L & B Auction • 660-359-1070

FOR SALE: 2007 Harley Street Bob FXDBI, 13,xxx miles, olive pearl and vivid black. Will email pics. \$8,500 OBO. Phone 573-795-1227 3-11

FOR SALE: 26' Camper Trailer, sleeps 6, sell for \$1,500. www.dracarlot.com 217-653-7480 3-11

Tillable Land Auction

Lewis Co, MO
April 9th, 2011
www.mcafeeauctions.com

CHATEAU:
CUSTOM BUILDING: Quote?
Chateau Homes
Ashland
573-303-5514

FOR SALE: 2007 Suzuki M50 Boulevard 819cc, 4,700 miles, black/chrome, v-twin, 2 cylinder, 4 stroke, 5 spd manual shaft driven, fuel injection, liquid cooled, solo owned/ridden, sweet bike! Cobra pipes + extras. Priced for quick sale. \$4,000 firm.
bross22@mywdo.com
573-822-8922 3-11

FOR SALE: 5th Wheel Plate, Both in Box of Pickup, \$75. 319-677-0500 EFTN

QUALITY POWER SPORTS: Hwy 5 South, Albia, IA. Lund Boats, Can-Am ATV's Sea-Doo, PWC's & Sport Boats, Service/Parts/Winterization Of All Makes & Models. 641-932-2628 TFN

FOR SALE: Pool Table. \$600 319-592-3214 TFN

WHOLESALE SPA LIQUIDATION: 30 Models Must Go. 1/2 Price Of Retail-No Reasonable Offer Refused. 641-226-5154 TFN

FOR SALE: Golf Carts, Yamaha EZGO, Club Car, Lift Kits, ATV Tires, Rear Seats, We Have It All!! We Service All Brands & Everything Is Guaranteed! See Pictures & Prices at www.rustylatimer.com or Call Centerville, IA. 641-895-0075 TFN

FOR SALE: 1983 Taurus Camper w/Full Bed; Sleeps 6, Stool and Shower, Stove, Refrigerator, Awning. \$2900 OBO. 319-592-3214 TFN

QUALITY POWER SPORTS: Hwy 5 South, Albia, IA. Lund Boats, Can-Am ATV's Sea-Doo, PWC's & Sport Boats, Service/Parts/Winterization Of All Makes & Models. 641-932-2628 TFN

EMPLOYMENT

HELP WANTED: Waubonsie Trail Park Campground Host. Contact Wayne Thornsberry or Betty Thomas. 319-397-2343 319-397-2434 3-18

Drivers: Company or O/O's, Midwest Regional, \$1500 Sign-On, Reg. 1-5 days out, OTR 5-10. www.hey1.net
Hey1 Truck Lines, Inc
800-973-9161 4-1

PUBLIC AUCTION

Tuesday, March 15th • 5:30 PM

Located at Sinnif Auction Barn, 226 E. Main, Fremont, IA

APPLIANCES & FURNITURE: Coronado Chest Freezer; Hotpoint Chest Freezer; Hotpoint Gas Dryer; Queen Size Bed, Comp w/Dresser & Mirror; Full Size Bed, Comp w/Chest & Dresser w/Mirror; Metal Frame Full Size Bed, Comp; Matching Set Chest Dresser & Headboard; 4 Drawer & 5 Drawer Dressers; 4 Drawer Chest; 3 Drawer Chest w/Mirror; Drop Leaf Table; Computer Desk; Rocking Chair; Entertainment Center; Hutch; Desk & Chair; Office Chair; 2 Drawer Nightstand; Bookcase; Cedar Chest; Wingback Chair; Rocker Recliner; Lamp Table; End Tables; Table & 3 Chairs; 4 Drawer Filing Cabinet; 2 Dr Metal Cabinets.

HOUSEHOLD & COLLECTIBLES: Sewing Box; Sewing Machine in Box; Kerosene Utensils; Tricycle; Pictures; Red Wagon; Easel; Fan; Lamps; Elec Fireplace; Kerosene Road Marker; Picnic Basket; Toys; Microwave; Dishes; Books; Glassware; Scanner; 8 Tracks; CDs; Lawn Ornaments; Blankets; Rugs; Well Pump; Bird Bath; Canning Jars.

TOOLS: Garden Tools; 3.5HP Mower; Push Cultivator; Rods & Reels; Patio Chairs; Many, Many Boxes Not Gone Through.

Estate of Janice Carmer

TERMS: CASH OR GOOD CHECK FOOD & SEATING AVAILABLE
Doors Open At Noon. Not Responsible For Accident Or Theft.
All Announcements Made Day Of Sale Take Precedence Over All Ads.

SINNIF AUCTION SERVICE

AUCTIONEERS: J.D. Sinnif - Don Zook
H: 641-682-1860 Cell: 641-799-3615 B: 641-933-4557
website at www.sinnifauction.com

Farm Machinery!



Saturday, March 19, 2011 • 11:00 A.M.

34277 Dexfield Rd, Dexter, IA

(From the West edge of Dexter take hwy P-48 1.5 miles North to farm)

JD 740 loader bale spear, 1999 Mattson head trailer (like new) 1500 bu. Steel grain bin on treated skid (to be moved) 1992 Reese drum mower (8' - 3 pt, excellent cond) Stanhoist 12' - 3 pt chisel plow, IH #37 12' 11" tandem disk Kewanee 24' harrow & cart, JD #350 54' elevator, hyd lift Hesston stack/bale mover, IH #710 6x16" plow hyd hog/mower cart - 6'x10', Stanhoist 6'x10' barge wagon Servis Rhino 3 pt rear blade w/hyd tilt & swing (4) IH 150 lb rear tractor weights, (10) IH 75 lb front end weights 500gal diesel barrel w/elec pump, 110 gal p.u. fuel barrel w/elec pump 40 bu Big Husky round hog feeder w/lids L.B. White hanging heater, various portable augers to elec motors 4 seat bean spray bar, Ford pu box trailer, 6 row 30" liquid N 3 pt tool bar 500 gal front mount spray tank & frame - will fit 4450 frame P.T.O. direct drive spray pump, Kinze radar gun 110 gal plastic tank trailer sprayer & pump 1,200 gal water nurse tank w/hem inj to gas pump 2 section pull harrow w/evener, 2 elec meter loops IH #133 3pt no-till cultivator, JD #68 auger wagon (needs repair) IH #468 frt mt 4-row cultivator w/rear end attach Manure pit agitator w/hyd orbit motor, hog ringing chute 8'x16" hay rack w/m.w. gear, 10' ear corn drag, bug zapper Manure Master elec vibrating scraper, (2) pump jacks Chris Cut lawn mower w/cart, several hyd cylinders (2) used Goodyear Dt710 tires - 18.4x38, speed jack 1 pr 12.6"x38" tractor chains, 5 rolls of good 37" woven wire Antique set of hog scales made in Minburn, IA Pace C.B. base to several radio's (3) Smidley stainless steel confinement feeders (56.5"X20" wide) 80 bu. round outdoor hog feeder w/Sioux plastic base Plus more misc items!!



1992 Nu Hawk 170 flail manure spreader



1977 Ford 900 grain truck



E-Z Flow 300 bu gravity wagon w/ hyd brush auger



1995 Ford F150 extended cab (111,000 miles) 2WD fiberglass topper



1950 Chevy 4 dr deluxe



JD 980 24' 6" field cultivator



1995 JD 740 MFWD w/power quad, ser #002446, 5600hrs; 1995 JD 740 loader w/85" Q.A. bucket



1987 JD 4450 MFWD w/powershift, ser # 23103, 6340hrs



1990 Brent 470 auger cart w/scale & shur-co roll tarp



1990 JD 9500 combine, ser #636202, 4041 engine hrs, 2650 separate hrs



2004 Kinze 3600 12/23 interplant no-till planter, ser #617898, exc cond



1997 JD 693 cornhead (ser # 670754)



Portable livestock trailer



1992 Feterl grain auger, 76"x10" w/hyd lift to hyd swing hopper



Brent 600 gravity wagon w/truck tires



IH 496 tandem disk 22' 6" near new blades



2000 Bombardier Traxter 4x4 (3463 miles)



1999 JD 920F Grain Table ser #685886, excel condition

Robert & Dorothy Reynolds, Seller

Daugherty Auction & Real Estate Services, Inc.
Kelly Daugherty, Owner Auctioneer • Chad Daugherty, Brad Jones, Auctioneers
Guest Auctioneer, Steve Maynes; West Central Sales & Auction Co
Adel, Iowa (515) 993-4159 ~ d_auction@hotmail.com
See Us on the Web at www.daughertyauction.com

Land Auction

"We sell it the day you need it sold!"

94 Acres M/I Guthrie County!

Thursday Morn., March 31, 2011
10:00 a.m.

Auction Location: Guthrie Center Activity Center
209 State St., Guthrie Center, Iowa

Location of Farm:
From Guthrie Center: 1 1/2 miles south on Hwy #25, West Side of pavement


General Description: Offering 94 acres m/I w/approx. 60 acres cropland. Balance in pasture & timberland w/frontage to Hwy #25.


CSR Ratings: 35 & 26 Taxes: \$ 349.00

FSA Information:

Cropland	61.1
Effective DCP Cropland	61.1
Direct Yield	24
Bean Base	14.2

TERMS: Cash, 10% down payment day of auction. Balance due at closing on or about 30 to 45 days. Possession at closing. Sold subject to tenants rights until March 1, 2012.
Guthrie County, IA





Section 18 of Valley Plat
Daugherty Auction and Real Estate Services, Inc.
Kelly Daugherty owner auctioneer • Chad Daugherty, Brad Jones auctioneers
Adel, Iowa (515) 993-4159 ~ d_auction@hotmail.com
See us on the web at www.daughertyauction.com

The information in this brochure is from sources deemed to be reliable but it cannot be guaranteed by Daugherty Auction and Real Estate Services, Inc.

Large Farm Machinery & Livestock Estate Public Auction

Saturday, March 19th, 2011 • 10:00 AM
Storm Date Saturday, March 26, 2011 • 10:00 AM

Location - Midway Between Corning & Creston, IA on Hwy 34 (Mile Marker 73). 1/2 Mile North on Union Ave. (Auction Sign Posted on Hwy 34.)

Selling Misc Farm Lowboy Items @ 10:00 AM
12:00 Noon Sharp Selling Livestock to Include

15 Black Balancer 1st Calf Heifers, A1'd to LBW Balancer Bulls Due March 25th. (A Top Set of 12-1300# Heifers) Plus 55 M/L Black & Red Balancer Cows, 2nd Calf to Aged, Mated to Black & Red Balancer Bulls Due to Start March 25th. (Big Stout Cows)

Pickup-Grain Truck-Tractors-Farm Machinery to Follow at 12:30-1 PM: 2011 Chevy LT 2500HD, 4x4, Reg Cab, Duramax Diesel, 2,226 Miles; 1997 Freightliner FL80 Grain Truck w/Knapheide 20' Steel Box & Hoist, Twin Screw, Eaton/Fuller 9 Spd Trans, 8.3 Cummins, 220,228 Miles, Extra Clean; 2010 JD #6430 Diesel Tractor, Prem Cab, 24 Spd, PQ Trans, FWA, 2 Rem, LH Reverse, 275 1 Owner Hrs & Sells w/JD #673 Ldr, Self Leveling w/7' Bucket & Joystick; 1992 JD #4455 Diesel Tractor, PS, FWA, 3 Valves, 70% Rubber w/Duals & 12 SC Weights, 5,917 Hrs; JD #946 13' MoCo, Impeller Rotary Disc Type; Rhino 7-12 12 Wheel V-Rake; Late Model JD #567LR Baler w/Monitor, Mega Wide, Bale Kicker, Cover Edge Net Wrap, 4,923 Bales; 2009 Atchison Seedmatic 3020C 10" Pasture Renovation Drill, Pull Type; Brent #472 Grain Cart; Top Air TA1100 Sprayer, 60' Booms & Foam Markers; 2 JD Buck 4-Wheelers; BIL Mfg Co Hyd 6 Way Blade, Pull Type & MUCH MORE!

Go to www.crestonlivestock.com for Pictures & Complete Listing.

C. WAYNE WILSON ESTATE
641-335-2591 Evening - Please Ask for Mike (Son-In-Law)
Cell 641-344-3306
Marne Cline, Executor of Said Estate

Auction Conducted By
West & Frey Auctioneers
Creston, IA
Darwin West 641-344-1958
Tom Frey 641-344-5082

DELINE FINANCE:
FREE APPRAISAL: When we do your mortgage, refi or purchase
www.delinefinance.com, local
573-303-5520

EXPERIENCED SKIDLOADER/TRACTOR OPERATOR NEEDED: Commercial Seeding/Erosion Control Company is looking for Class A CDL drivers with farm/landscape background. To apply: Go to AGCiajobs.com website- go to Job Search Keyword "Operators" - go to Soil-tek to "view job" & then go to "Apply Now" red tab. Soil-tek is an EOE.
AGCiajobs.com 3-11

CDL LICENSES: In 24 Hrs, Training & Automatic Truck Furnished. CDL For All States. Guaranteed To Pass American CDL Training, LLC. www.americancdl.com, St. Joseph, MO. Now Accepting Visa & Mastercard.
660-254-2541 TFN

GENERAL LABORER NEEDED: to assist in duties such as installing silt fence, hydro-seeding, matting & grading. To apply: Go to AGCiajobs.com website-Go to Job Search, Keyword "Laborer"-Go to Soil-tek to "view job" & then go to "Apply Now" red tab. Soil-tek is an EOE.
AGCiajobs.com 3-11

BECOME: An Ambit Energy independent consultant, unlimited income potential. Sign up at www.dyas.roberts.energy526.com If Questions call 217-653-7480 3-11

TOOL & REAL ESTATE AUCTION

SATURDAY, MARCH 19TH, AT 11:00 A.M.
135 Jefferson • Carlisle, IA



Real Estate to Sell Approx 12:00 - 12:30 PM.

80'x132' Lot w/Large Metal Building. 40'x70' w/a 20'x70' Attached Concrete Side Slab; 2-10'x10' Overhead Doors, 2 Offices w/Air Conditioning; 1 Restroom. Building is in Excellent Condition.

Real Estate Terms: 10% Down the Day of the Sale w/the Rest Due at Closing. Brokered by Covered Bridge Realty.

OFFICE ITEMS: HP color laser Jet 3700 copier; 6' & 7' nice oak office desks; 6-drawer oak file cabinet; adjustable shelf open-face oak file cabinet.

TOOLS & MISC: Gross hinge machine; Weaver shaper w/power feeder; Craftsman 10" 3 h.p. contractors radial arm saw; Delta 12" planer; Jet 6" planer w/60" cast base; 36" single head belt sander AEM; 3 h.p. 10" General 220 table saw needs starter; 5 h.p. General table saw 220 w/6' x 6' saw table; Excaliber tubed slide table; 2 Excaliber saw guides w/dust collectors; Delta 10" 220 radial arm saw; Weaver drill machine w/base; Castle pocket hole machine; Castle face frame assembly table; Jet 6" edge sander; Quincy 5 h.p. 80 gal. air compressor; 2 recoil air hoses; 20 plus I-bar 3' & 4' furniture clamps; 5 routers; 2 Porter-Cable 3" & 20" belt sanders; DA-21 nail gun; 2 pin nailers; 2 Hitachi wide crown staplers; Porter Cable narrow crown air gun; Senco brad nailer; other Senco guns; 2 De Walt saber saws; adjustable roller tables; 30" floor fan w/wheels; 36" floor fan; Ryobi 10" miter saw; some cordless drills; misc. hardware...nails, screws, stain & other; 10" De Walt miter saw; 10" sliding miter box; levels; 3 9' x 32" adjustable heavy duty storage shelves; other misc. items.

SPECIAL MENTION: Clark ECS 25 5000 lb. electric fork lift; Large Donaldson Torit dust collector w/dump box.

HARTMAN AUCTIONEERING

Steve Hartman 515-468-7857 • 515-462-4584

www.stevenshartmanauctioneers.com

Kurtz Family Auction Public Auction

Location from Bloomfield: go west on hwy 2 to West Grove. Go north approx. half a mile to 225th St. Go east to auction site on left. **Watch for signs!**

Saturday, March 26th, 2011 at 9:30 am

Machinery
N.H. 489 mower conditioner • 2-McCormick corn binders forecart blade L & K • J.D. 214 T baler • wagon & gears J.D. 720 haybine w/ 23 HP Vanguard • J.D. 24 T square baler
2-J.D. manure spreader • Balovator w/ Honda engine • 2 - hay rakes w/gears • 8 ft. wheel disk w/hyd. pump • 2 - N.H. 56 rakes • heavy duty lumber wagon on heavy gear loader for corn binder • 2 hay wagons w/gears • farm trailer 40' Kewanee elevator • 10' cultipacker • 2-tetter rakes
Pioneer blade slip scraper • 4 section harrow on cart 2-165 bu gravity flow wagons • tumble bug bale mover flare box on gear • J.D. 953 6'x10' wagon w/springs Engate seeder for parts • PTO attachment w/motor several forecarts • 45' Kewanee 500 elevator • endgate seeder on 2 wheel cart • 5 ft. forklift forks

Farm and livestock misc.
mineral feeders • 110 lb scales • buckets • gates • steel posts hog & cattle panels • calf creep • used cement blocks wagon hoist • refrigerator for storage • bale feeders • sled hydraulic cylinders • feed bunks • stainless steel water tank shovels • hedge line and corner posts • forks • hot shot hanging scales • dehorners • treated fence posts rabbit pens • dog pens • 2 - dog houses • tarps dog feeder • pet taxis • fuel tank • grass seeder Dr mower w/ snowblade attachment Dr weed eater • Snapper weed eater (needs work) weed mower • 250 gal. liquid tote • 4 - 23" trusses 300 gal. fuel tank • 2 man digger (needs engine)

Horses, Buggy, Bobsled etc.
2- black 5 yr old Percheron geldings (green broke) 9 yr old Morgan Standard bred cross gelding (ride & drive) 3 yr old Hackney pony dark bay mare 47" well broke 2 seated open buggy • bob sled • draft harness and parts heavy shoeing stock • lead ropes • 2-3-4-6 horse eveners

Household Items
Recliners • cherry stoner • Nutri-steamer • lanterns • end tables dining room table w/4 chairs • 3- beds • rocking chair • couch No. 32 meat grinder w/stand • several chests & drawers 2 - dressers • wardrobe wooden high chair • 2- high chairs wash tubs • table w/2 leaves • 8 wooden chairs • plant stand bed springs ironing board • step stool • charcoal grill • dishes clothes rack • child's booster seat • kerosene lights • 2 - propane lanterns • meat slicer clothes hampers • bedding & pillows cookware set cast iron sink • Tupperware • 2 qt freezer 2 - Salad Master brands • canning jars • 5 gal. fish aquarium 2- check writers • bookcase 12' x 24' linoleum roll • books puzzles • games • Maytag wringers (for parts) • pressure cooker camp stove w/gas 1959 encyclopedia set • green canning jars flower pots & baskets • pressure cooker

Guest Auctioneer Morris Yoder

10'x24' Sundowner building w/runs on both sides, Gyrs. old 32 runs inside and out with wash down Sells complete along with 22 Yorkies, 19 Chihuahua's, 4 Pomeranian's and 5 Maltese All dogs are registered, micro chipped and current on Vaccinations. Vaccines, dog feed, supplies and micro chip scanner are included. Sells complete around 1:00pm USDA inspected More info call Jonas Kurtz Voice mail 641-929-3780 ext.4

Alvin & Marilyn Kurtz & Sons
14462, 225th St.
Bloomfield, IA 52537

Lunch & Bake Sale by Amish Ladies

Alvin Kurtz Voice mail 641-929-3780 ext.3
FOX AUCTION SERVICE Jr. Fox: 660-341-1453
www.foxauctionservice.com Kenny Fox: 660-216-0700
Terms: Cash or check with proper I.D. Not responsible in case of accidents or theft. Announcements made day of sale take precedence over any advertising.

Consignment Auction Saturday, March 12 at 10:00 A.M.

Located at the Promise Land Building North of Bloomfield, on Hwy 63

EARLY LISTINGS!!

Fishing pools, Meucci 3 sided pool cue case, Casio small display case, Box of deer antlers, (20) Pool sticks, (8) sets of pool balls, Misc tackle boxes, Old pool racks, Misc Nascar Cards including Davey Allison, (20) Nascar semis-Jeff Gordon, Rusty Wallace etc, (100) small Nascar cars, Roush Racing (5) gold car collection, (20) 1/24 scale Nascar cars, Oak Display case, Bicycles, Twin bed frame, Electric Well pumps, Ivory pool balls, Red Jacket hand water pump, Trailer of misc farm related items, Small deep freeze, old tonka trucks, JD 4955 windrower-Ottumwa Works 1/16, small toy tractors & equipment, Boyds bears, John Deere racecar. Many more items too numerous to mention!!

Check out www.lynchboys.com for daily updates and pictures!

This is a partial listing!

Lincoln Lynch
Cell 641-208-3649
Office 641-664-2275
Lynch Realty Inc. & Lynch Boys
Auction Service
Bloomfield, Iowa
Licensed Realtor in Iowa

Sale Conducted by
"LYNCH BOYS"
AUCTION SERVICE

New London, Iowa ESTATE AUCTION

THURSDAY, MARCH 17th AT 11AM

Located at the heated, indoor Menke-Hoyer Auction Complex on the east edge of New London, Iowa. (Watch for signs)



Cadillac: 1999 Cadillac Deville 4 door sedan, Northstar 8 cyl. eng. fully loaded, color white with navy soft top and navy leather interior, only 77, 224 actual miles. Very nice estate car with low miles - Must See!!

Sheaffer Pens • Collectibles • Glassware Nice selection of collectible Sheaffer pens including sterling, gold plated & Lennox china pheasant pattern desk set. Sheaffer years of service pens. Circa 1937 Sheaffer Historical Review pamphlet. Sheaffer's White Dot bowl & plate. Men's & women's watches. Straight razor. Costume jewelry. Religious trinkets. Indian arrowhead. Sheet music. Sterling cup & saucer. WM Rogers's flatware service w/ chest. Embroidered linens. Graniteware. Longaberger basket. Old hardback atlas. Walnut desktop globe w/barometer. Fenton ruby bird & ruby signed glassware. Leaded crystal cookie jar. Sacred Heart plate. Lrg. glass ice bucket. Glass Pepsi pitcher. Derbyshire 12 place setting of china. (More glassware that was already packed and unavailable to be seen at the time of this listing - Expect some surprises day of auction!!)

Antiques • Furniture • Household • Stair Chair Lift Waterfall style cedar chest. Caned bottom rocker. Oak wash stand. West Minster 7 day wall clock. Like new Maytag front load washing machine & elec. dryer. Elec. stove. Oak round kitchen table & 4 chairs. Dining table w/6 chairs. Corsair davenport. 2 matching swivel rockers. Suede recliner. RCA flat screen TV. Solid oak entertainment center. Oak rocker/glider. Like new oak dresser w/lrg. mirror & matching chest of drawers. Sleeper/sofa. Bookcases. 3 wood bar stools. Iron patio set & patio furniture. Twin size bed. Hospital bed. Lots of Christmas decorations. Wooden Amish buggy. Books. Hand & bath towels. Bedding. Linens. Eureka vacuum. Lrg. concrete religious statues. Hand tools & much more. Also Bruno Electra Ride stair lift with auxiliary battery power, flip-up arm, seat and footrest, (very nice unit).

Auctioneer's Note: This is a really nice estate with very clean items. Auction is much larger than the list indicates. Please join us for this clean estate sale in our indoor climate controlled auction complex with food and restrooms available. Many more photos available online.

BUD & LANA METZINGER ESTATES (Montrose, IA) - OWNERS

www.menkehoyerauction.com

319-367-5744
New London, Iowa
Partners of Fraise Auction & Real Estate

ESTATE ANTIQUE AUCTION

SATURDAY, MARCH 26 • 10:00 AM

Estate of the Late Ron Peterie

A.V. Spillman Event Center in Jamesport, MO 64648

Jamesport is located 12 miles west of Trenton, MO & approx. 85 miles northeast of Kansas City, MO on Hwy. 6.

3 Sets of Sterling Silver Flatware, Plus Extra Pieces

12 piece setting & extra pieces (79 total) of Silver Melody sterling silver flatware in a Gorham Pacific silver cloth chest; 12 piece setting & 2 extra pieces (50 total) from International Silver Co. (initial B on the pieces) in a case; 8 ea. Sterling dinner forks; 8 ea. Sheffield knives, sterling band on handle, below mother of pearl handle; 70 pieces of monogram flatware 800 silver; partial set of Panama silver.



Furniture, Glass, Enamelware, Lamps

Walnut marble-top washstand w/burrow front & splash board; oak 42" square table w/5 legs; 2 oak pressed back chairs w/cane seats; oak lamp table; oak 20" parlor table; oak rocker; oak washstand; w/3 drawers & 1 door; oak rocker; oak music stand; walnut 36" step telephone operator desk w/pigeon holes & drawers; maple occasional table w/drawer; 2 oak child's chairs; walnut parlor arm chair; mahogany fancy 16" wide bookcase w/doors at bottom; washstand w/splash back; 2 glass front display cases; sewing rocker w/wicker seat; wicker stool; cedar chest; 3 oak display cases



19" wide; maple 2 door display case; 2 oak wall telephones; 3 bridge floor lamps; M.W. parlor wood stove 42" high; **Glass** - 100+ pieces of Fosteria; 6 or 8 nice pieces of cut glass; several pieces of pressed glass; 12 or 15 pieces of Carnival glass; several pieces of pink Depression including cherry blossom & open lace; 20 pieces of Tealeaf; 30 pieces of blue glass; 6 pieces of Irish Herringbone; 25 toothpick holders; 10 Precious Moments; 20 collector plates; 75 Demitasse cups & saucers; Noritake celery dish; 12 glass butter churns; Wedgewood pitcher & bowl; Northwood 4 piece set Carnelian Canary opalescent; Majolika swan plate; 12 perfume bottles; Nippon mustard pot; 2 pieces of Stuben globes; 2 R.S. Prussia cups; blue pharmacy bottle; McCoy pitcher & bowl; 7 Up railroad china platters; 8 Mayer china railroad grill plates; U.P. Tea Co. Adv. Poster in frame; **Enamelware, clocks, lamps** - Green enamel 22" gas range; gray granite miniature kerosene stove; 12 pieces of cream & green enamelware; 6 or 8 more pieces of nice granite; Gilbert mantle clock; Seth Thomas oak kitchen clock; Waterbury oak kitchen clock; green Aladdin Washington drape kerosene lamp plus 5 or 6 more kerosene lamps; 3 gal. mammoth butter churn; 3 gal. stone churn w/lid & dasher; wood churn w/lid & dasher; 5 gal. Red Wing crock; 4 gal. Red Wing crock; 6 gal. Western stone crock; plus 12-15 other nice stone jugs & crocks; 8 churn tops.

Copper, Toys, Coke, Quilts, Primitives & Much More

22" copper kettle w/bail; brass kettle w/bail; 2 copper tea kettles; White King toy truck; 3 metal airplanes; 1959 erector set; 2 iron banks; metal military men; J. Chein elephant on drum mechanical bank; GI Joe wind-up toy; 2 iron horses; microscope; stero scope w/several cards; duck & ducklings pull toy; doll; plus 50-100 other toys; 1942 very good Coke tray; plus 50 or more other Coke items; 2 hand-done quilts; cow head & tail can opener; iron elephant cigarette roller; ivory cue ball; display case of lighters; railroad locks; 2 candle stick phones; 2 railroad phones; 5 baby plates w/nursery rhymes; 3 sets of wooden ice skates; bamboo 5 piece fly rod in case; foot warmer; Edison cylinder player in oak case Amberola #30; portable shaving set in wooden box w/mirror; cast iron bean pot; kraut cutter; coffee grinder; syrup bucket; sprinkler can; handkerchief box w/hankies; 250 pieces of sheet music; 30 or more collectors books; Ohaus seed scale; Saratoga Blue seltzer bottle; 20 watch fobs; oil sample kit from Tate Motor Co. Gallatin, MO; 4 fancy flue covers; 3 miniature advertising jugs; Tindall, MO lodge ribbon; 3 display cases full of smalls; Carnival chalk duck; cadet clarinet in case; walking canes; 7 pieces of lead stained glass; box of etched glass; Rock Island Track One dining car menu; Locomotives of the World book of stamps; book of bicentennial stamps; book of stamps; wooden ice bucket w/lid; bushel tole ware; 4 Stanley planes; nice family picture in oval frame plus several other pictures & frames.

Terms - Cash or good check. Statements made the day of the auction take precedence over any printed material. For more information, contact Bill or Stan. Lunch will be available.

LAND AUCTION

Mahaska County, Iowa
160± Acres

10:00 AM • Monday, April 4

American Legion Building
Barnes City, Iowa

Cropland and CRP Acres!

For additional information, contact:

Ben Watson, Agent
State Center, Iowa

(515) 971-7951 or (641) 483-4249

BWatson@FarmersNational.com



A-4015

www.FarmersNational.com

Farm Management • Real Estate Sales • Appraisal
Insurance • Consultation • Oil and Gas Management
Lake Management • National Hunting Leases

Scotland County LIVESTOCK AUCTION

P.O. Box 111 • Hwy 15 North • Memphis, MO
660-465-7213 • Jerry & Barb Blomme

SPECIAL CATTLE SALE

Saturday • March 12 • 12:30 pm

- 60 blk & Char X str & hfrs 450 to 650#
- 35 blk bulls & hfrs 400 to 550#
- 25 blk str & hfrs 500#
- 10 Char X str & hfrs 600#
- 20 blk str & hfrs 500#
- 12 mix bulls & hfrs 600#

Market Report for Dairy Sale, Wed. Mar. 2

Fresh Cows: \$800 to \$1600, top \$2050. Springers: \$1100 to \$1475. Open Heifers: 400# \$560, 490# \$650, 525# \$650, 630# \$710, 709# \$810, 785# \$875. Holstein Steers: 325# \$115.00, 358# \$110.00, 453# \$100.00, 530# \$97.25, 600# \$95.00, 750# \$95.50, 806# \$97.25, 854# \$95.85, 979# \$90.75. Veals: \$75 to \$120. Started: \$150 to \$300. **LB Cows:** 45⁰⁰ to 74⁰⁰.

Market Report for Saturday, March 5th Sale

Steers: 370# \$151.00, 435# \$144.00, 529# \$149.00.
Bulls: 320# \$149.00, 380# \$142.00. Heifers: 421# \$135.00, 525# \$129.00, 640# \$118.00.
Veals: \$55 to \$105. **LB Cows:** 45⁰⁰ to 72⁰⁰, top 79⁰⁰.
LB Bulls: 68⁰⁰ to 80⁰⁰.

AG RELATED

FOR SALE: 5000 Bu. Circle Grain Bin Complete With Floor, Fan Stirrator, Unload Auger. Already Down. Good Condition. Can Deliver and Erect.
712-621-0897 3-18

FOR SALE: Allis Chalmers D-19, Gas, Wide Front, Quick Couplers With 8' Blade, \$4,500.
641-780-0419 3-11

FOR SALE: New 9'2" Vicon Disc Mowers, 3PT; New 10 Wheel V Rakes, Pull

Ertel Welding
660-341-1997 3-11

FOR SALE: John Deere 7000 4-38" Planter, Seed Firmers, Dry Fertilizer Boxes, Precision Meters, Good Condition, \$2,500.
641-774-6644 3-11



2006 Honda VTX 1300, Cobra Pipes, T-Bars, Custom Rear Fender, 1600 Miles

Only \$5,695

C&C Cycle
Chariton, IA • 888-475-2243
www.cc-cycle.com



Annual Spring Machinery Auction

Held At The Clark Co. Fairgrounds, Kahoka, MO.

Wednesday March 16th • Starts At 10:00 AM

ONCE AGAIN THIS WILL BE ANOTHER LARGE SALE. EXPECTING 20-30 TRACTORS. WATCH OUR WEBSITE DAILY AS WE WILL CONTINUE TO ADD INFO UP UNTIL SALE DAY.

EARLY CONSIGNMENTS INCLUDE:

DOZER/LOWBOY/ROAD TRACTOR

1974 CAT D7F S/N 94N7280 straight 12' blade dozer w/tilt, overhauled 180hp 3306T dsl, powershift, 600 hrs on new undercarriage, less than 2000 hrs on rebuilt transmission & both final drives, hyd trac adjusters, 22" heavy duty industrial pads. Also selling misc CAT parts to include: idlers, rollers, u-joints, etc. **Allen Dochterman 660-727-2615 for additional information.** 1983 Aztec 23' deck 2 1/2 Dove GVWR 70,000 lowboy trailer, new brakes, good rubber. 1975 Int Transtar II road tractor, less than 5000 miles on rebuilt 290 motor, 10 speed, good rubber, new brakes. Heavy Duty triple axel dozer/equip trailer, bumper hitch.



TRACTORS

1981 Int 3588 2+2, triple hyd outlets, 3 pt, 18.4-38 radial tires, 4690 hrs. Int 684 (D) MFWD, rops/canopy, low profile, good 18.4-30 tires, 1034 hours, sells comp w/Int 2250 hyd quick tach loader. Int 856 (D) cab, dual hyd outlets, 540/1000 PTO, 18.4-38 tires. JD 4020, powershift. CASE 2290, cab, dual hyd outlets, 18.4-38 tires, 3649 hrs. Ford 5000, gas. 1957 Farmall 350 row crop, diesel, PS, fast hitch w/3 pt inserts. 1949 Farmall Cub w/Mott Flail mower, new tires, rear weights. 1953 (Anniversary) Ford Jubilee.

TILLAGE EQUIPMENT

Int 496 26' Wingfold disc S#41429. DMI Tigermate II 22' Wingfold field cult w/5 bar spike harrow, S#822062 (Very Low Acreage). Int 4600 27 1/2' field cult. 5 bar harrow. Kewanee 14' field cult w/buster bar spike harrow. Kewanee 10' disc. JD 8' cultimulcher. JD 1100 24' Mounted field cult.

HAY EQUIPMENT

CASE-IH 8460, twine baler, monitor, new floatation tires, gathering wheels, field ready. Vermeer WRX 14 wheel V-Rake. Vermeer 504F baler. N.H. 1012 Bale stack wagon, pallets. N.I. 5908 disc mower. JD 935 disc bine. N.H. 256 side delivery rake w/ front dolly wheel. 8 bale bumper hitch hay trailer w/8.25-20 tires. 8 bale GN hay trailer (only 2 yrs old). N.H. trail type sickle mower. 3 pt bale mover. JD 1219 Hay Bine.

TRUCKS

2006 Chevy 2500HD, 4WD, reg cab, 6.6 Duramax, auto, hide-away GN ball, only 69,000 miles, white in color, very nice! 1997 Ford F250 4WD, 7.3 Diesel, Auto, New Tires, Besler Bale Bed. 1973 F600 330V8, 15.5 Knapheide grain bed & twin hoist, 23,971 miles. 1973 F600 13.5 Knapheide grain bed & twin hoist. 1976 IH 1600 13.5' grain bed & hoist. 1992 GMC Bravada, AWD, 4 dr, 4.3, auto, 150,000 miles. 1994 Toyota 2WD, 5 spd, new tires, 25-30 MPG. 2003 F150 XLT 4WD 5.4, ext cab, 150,000 miles, good tires. Fiberglass Topper for 1990's Longbed Ford Ranger.

TRAILERS

2005 24' United Cargo Trailer, New 8 ply tires, drop ramp door, well kept! 19-- 16' GN livestock trailer, used very little! 1983 Travelong 16' bumper hitch livestock trailer (good cond). 2 wheel utility trailer. H.M. GN dump trailer w/15' bed & hoist. 1976 Cimmaron GN horse trailer.

MISC. EQUIPMENT

2001 Bush hog 2615 batwing, L.tires, chains. Bush hog 9' blade, 2 cyl, quick hitch. Bush hog 15' batwing mower. Danauser posthole digger. 24' spike harrow on cart, hyd lift. 500 gal tank sprayer on cart w/40' manual fold rear booms, PTO driven. Parker gravity dump wagon. Ford 9' HD blade. JD model R manure spreader. JD 3970 2R silage chopper. 6T fertilizer cart. Knoedler auger cart. 500 gal tank sprayer on cart, 40' booms, foam marker. AC snap coupler 3 btm plow. Gravity flow wagon. Rhino posthole digger w/12" auger. 6 1/2 X 13' flatbed wagon. Gravity flow wagon. 7' Kewanee H.D. Blade. Tractor Supple Posthole Digger.

RTVS/ATVS/JET SKI/BOAT/LAWN EQUIPMENT

2008 Kubota 500 fuel injected, camo, 4WD, RTV w/factory window, canopy & brush guard, only 180 hours. 2004 Kubota 900 camo, 4WD, RTV. Land Pride 4410 Treker, 4WD, Honda engine, side by side. 2005 Yamaha Pro-hauler 700 side by side w/wench, top & windshield. 1986 4X4 Honda 4 wheeler (fender damage). Yamaha Kodiak 400 4WD 4 wheeler. 2000 Kawasaki 900 STX jet ski w/reverse, 190 hrs, sells complete w/2006 trailer. Lowe 15' wide bottom Jon (fishing) Boat, 25HP Johnson, Trollie, trailer. (Sells Comp). JD 318 riding mower. JD 214 riding mower. Lawn sweep.

UTILITY EQUIPMENT

Woods GTC/2 60" tiller. Bush hog SQ600 3 pt mower. King Kutter 36 tine landscaping rake. 8' pull type wheel disc. 5 & 6" 3 pt blades.

LIVESTOCK & FARM RELATED

M&O head chute on cart; calf creep feeder w/rails; bulk bin; poly transfer water tank; various steel posts; cattle & hog panels; asst size gates, bale rings, feed bunks, etc; Cap-Chur mod 50 tranquilizer rifle; 3 pt grain head mover; 8-100 lb IH tractor weights; IH flat top fender. Also taking consignments of various farm related items & GOOD Imp tires.

Auctioneers Note: Lot opens for viewing from 9:00 a.m. to dusk. Loader tractor onsite day of sale. Lunch available. List subject to additions & deletions. List Subject to Additions & deletions.

www.mcafeeauctionservice.com

McAfee/Hayes Auction Service
660-727-3796

L & B AUCTION SERVICE



BILL BRINSER (660) 359-1070
STAN LOWREY (660) 359-3101

Go to www.northwestmissouri.com & click on auctions







Baring RV Sales & Salvage

25-30 Units In Stock!

See Complete Inventory At: www.baringrv.com

Full Service Shop for Cars & RV's

	2011 Eagle River 8', Slide In Truck Camper, AC/Heat, Bath/Shower \$10,500		2003 Sandpiper 26' TT 2 Slides Clear Title \$8,500
	2007 Jayco Jayfeather TT 27' Sleeps 9, Double/Single Bunks, Clear Title, Rear Slide, \$12,500		2008 Silverback by Cedar Creek, 33', Beautiful Like-New Well Maintained, 3 Slides, Rear Living Area w/Two Recliners, Full Size Shower, clear Title, \$29,500

Baring RV is Happy To Announce They Are Now A Sunset RV Dealer! Sunset RV's Are 100% Amish Craftsmanship Following The Trend Of Lighter & More Fuel Efficient Vehicles. Sunset RV's Have Engineered A Trailer Line Able To Be Towed By The Modern Mid-Sized SUV Or Car!

Full Line Of Sunset RV's In Stock NOW!
14', 16', 22' & Toy Hauler

All Models Have Optional Floor Plans To Suit You & Your Family Needs.

Ralph Burkholder, Owner • Baring, MO
Most Units Have Prior Salvage Titles
"Will Do Order Buying-Call Us With Your Need"
660-892-4545 or 660-341-1927 • No Sunday Calls!
Ask For Ryan Or Ralph



2002 Honda Gold Wing 1800 W/Motor Trike Kit, Fender Bras, Chrome Accents, 84K

\$22,995

C&C Cycle
Chariton, IA • 888-475-2243
www.cc-cycle.com

WARD'S REALTY

Lancaster, MO
660-457-8538

If You Are Buying or Selling
....Give Us a Call!!

Small Lot w/2 Yr Old Garage, Approx 24'x24' Is Along Hwy A. Nice Place to Put a Home.

**GIVE US A CALL! WE'VE GOT BUYERS
LOOKING FOR LISTINGS!**

www.wardsrealtymo.com



UNRESERVED Land AUCTION

Salem, IA
Located 8 miles south of Mt. Pleasant, IA on Highway 218 then 1/2 mile west on 335th Street.

111.47 ACRES, M/L

SELLING IN ONE TRACT

MONDAY, MARCH 28, 2011 AT 1:02 PM

Showing on Monday, March 14th from 1-2 pm

BUYER RECEIVES ENTIRE 2011 CASH RENT

- FSA information: 107.69 Acres tillable w/ 115 bushel corn yield w/ a 60.2 acre corn base and 34 bushel bean yield w/ a 52.3 acre bean base. (combined w/ other land)
- Corn suitability rating is 64.3
- Section 32, Jackson Township, Henry County, IA.

**VIEW COMPLETE LISTING AND PICTURES AT
www.richardrealtyauction.com**

Owner: WILFRED C. KRUSE ESTATE

Betty Fedler & Ken Kruse, Co-Executors Seleta A. Bainter - Attorney

RICHARD 319-385-2000
Realty & Auction, Inc. www.richardrealtyauction.com

*Got Your Squawk On??
Join Hawkie on Facebook!*

Rob's Cycle

PARTS • SALES • SERVICE
Exit 78 Off I-35 • Pattonsburg, MO
660-367-4407 • 888-669-5765

2008 Kawasaki 750 Teryx, 4x4



1999 Kawasaki Mule 2510, 2x4



2008 Polaris Industries Razor 800 EFI



2007 Yamaha Rhino 660 Ducks Unlimited Edition



**LOWERING YOUR COST
OF OWNERSHIP.**
WITHOUT LOWERING YOUR STANDARDS.

CNH REMAN starters and alternators provide the same great quality and performance as a CNH Original Parts.

THE CNH REMAN ADVANTAGE:

STARTERS

- » Extend life with new bearings, bushings and solenoids, and new iron-free brushes

ALTERNATORS

- » Added durability and performance with a heavy-duty house and industrial grade stators and rotors



We offer a full-range of CNH REMAN starters and alternators.
Ask us if CNH REMAN is right for you!



9983 Hwy. 92, Indianola, IA 50125
Phone: 515-961-2541
www.vetterequip.com





\$19,500

2004 Chevy 3500 Dually
 CREW CAB, 4x4, Duramax Diesel, Allison Auto Trans
 Has Been Chipped To Pull Camper, IT IS A POWER HOUSE!!
 One of the Sharpest Duallys Around, Special Paint & Wheels
 Has Predator Chip/Programmer & the Horsepower Can Be Raised Even More!

MOTOR KARS II 515-465-5066

UNRESERVED Land AUCTION

BIRMINGHAM, IA
 Located 1/2 mile north of Birmingham on Lace Road.

THURSDAY, MARCH 31, 2011 AT 1:02 PM

Land Preview on Thursday, March 17th from 1-2 pm

BUYER RECEIVES ENTIRE 2011 CASH RENT

40.21 ACRES, M/L ~ 1 TRACT

- FSA information: Approximately 37.97 acres tillable
- Corn suitability rating is 60
- West 1/2 of farm has 99 bushel corn yield with a 9 acre corn base and 28 bushel bean yield with a 9.9 acre bean base.
- East 1/2 of farm has 101 bushel corn yield with a 19.3 acre corn base and 26 bushel bean yield 16.8 bushel bean base.
- Located in Section 1, Lick Creek Township, Van Buren County, IA.

VIEW COMPLETE LISTING AND PICTURES AT
www.richardrealtyauction.com

Owner: RUSS CONGER
 David Miller - Attorney

RICHARD 319-385-2000
 Realty & Auction, Inc. www.richardrealtyauction.com

Helping You Build Your Dream.



- Metal Roofing • Siding Tear Off • Quality Buildings**
• Cattle Feed Lots • Hay/Grain Storage • AND MORE!

Commercial & Residential FREE ESTIMATES!

FREEMAN NISLEY CONSTRUCTION

3111 Edison Road • Seymour, IA

641-203-6663 • 641-898-2271

WORLD OF WHEELS

Phone:
515-309-3000

Join Us On Facebook



5330 NE 14th
Des Moines, IA

www.worldofwheelsonline.com



'08 Toyota Camry LE, Auto, 2.4L 4 Cyl, 41K, \$15,988



'04 Ford Explorer XLT, 4WD, 4.6L 8 Cyl, Leather, M.R., 3rd Row, 56K, \$13,988



'06 GMC Canyon Ext. Cab, 2WD, 2.8L 4Cyl, 81K, \$9,988



'06 Ford F250, Ext Cab, Diesel, 4WD, XL w/Fisher Plow, 92K, \$19,988



'93 Chevy Corvette Coupe 84K, \$11,988



'06 GMC Envoy, 4WD, SLT, Leather, M.R., 81K, \$15,988



'07 Honda Ridgeline, 4WD, RTS 3.5L, V6, 55K, \$20,900



'01 Dodge Dakota 2500, Quad Cab, HD V10, 4WD, Sport, Leather, 85K, \$14,988



'07 Dodge Caliber Hatch Back SXT, 2.0L, 4 Cyl, Auto, 38K, \$11,988



'09 Jeep Patriot, 4WD, Limited, Leather, 2.4L, 4 Cyl, Auto, 17K, \$19,988



'04 Chevy Silverado 1500, Crew Cab, 4WD, 271, Leather, Running Boards, Tonneau Cover, Tow, 62K, \$21,500



'07 Ford F250, Crew Cab, Diesel, Lariat, 4WD, FX4, Leather, Tonneau Cover, Running Boards, Tow, \$26,900



'09 Volkswagon, New Beetle S, Auto, Leather, 11K, \$18,988



'06 Honda Pilot 4WD EXL, Leather, M.R., 3rd Row, 62K, \$19,988



'08 Dodge Ram 1500, Quad Cab, 4WD, Laramie, Leather, M.R., Nav, 39K, \$27,900



'06 Dodge Ram 2500, Quad Cab, 4WD, Big Horn, SLT, 4 Dr, \$21,500



'09 Mitsubishi Lancer CVT, GTS, Auto, M.R., Remainder Factory Warranty 17K, \$17,988



'04 Cadillac Escalade AWD, Leather, M.R., Nav, 3rd Row, 65K, \$22,900



'98 Dodge Ram 1500 Ext. Cab, 4WD, Sport Topper, Tow, 128K, \$7,998



'05 Chevy Silverado 2500 HD Crew Cab, 4WD, LT, 6.0L, Leather, Topper, Tow, 103K, \$19,988



'05 Mini Cooper S Cpe, Hard Top, 1.6L 4 Cyl, 6 Spd Manual, 32K, \$14,988



'04 Cadillac Escalade AWD, ESV, Leather, Nav., DVD, 3rd Row, 81K, \$19,988



'06 Ford F150 Ext. Cab, 4WD, XLT, 5.4L 8Cyl., Tonneau Cover, Tow, \$15,988



'04 Chevy Silverado 2500HD, Crew Cab, 4WD, LT, Leather, 8.1L, 91K, \$19,988



'11 Buick LaCrosse CXL, 3.6L, V6, Leather, M.R., Chrome Wheels, 5K, \$29,900



'10 Jeep Liberty, 4WD, Limited, Leather, M.R., Tow, 23K, \$23,900



'08 Dodge Dakota, Crew Cab, 4WD, Laramie, Leather, 21K, \$23,900



'08 Ford F450, Crew Cab, Diesel, 2WD, Lariat, Leather, Nav, M.R., Dually, 21K, \$36,900



'09 Chevy Malibu LT w/2LT, Remainder Powertrain Factory Warranty, \$15,988



'05 Jeep Grand Cherokee, 4WD, Laredo, 84K, \$12,988



'08 Dodge Ram 1500, Quad Cab, Hemi, 4WD, Sport, Leather, Bedliner, Tow, 50K, \$24,900



'06 Ford Super Duty F350, Diesel, Dually, Crew Cab, FX4, 4WD, Lariat, Leather, Bedliner, 77K, \$29,900



'08 Chrysler PT Cruiser Convertible Auto, Leather, 16K, \$15,988



'10 Jeep Wrangler, 4WD, Sport, 3.8L, V6, 6 Spd, Manual, Hard Top, 16K, \$22,900



'06 GMC Sierra 1500, Ext Cab, 4WD SLT, Leather, Bedliner, 62K, \$20,900



'06 Dodge Ram 3500, Quad Cab, Diesel, 5.9L, Dually, Leather, Tow, 60K, \$31,500