



2011



Chicago

MURDER

Analysis

Table of Contents

Introduction	1
Murder Totals in the City of Chicago	2
Murder Totals by Area and District.....	3
Murder Totals by Type of Location.....	4
Murder Clearances.....	10
Murder Totals by Day, Month, and Time	13
Murder Totals by Method	22
Murder Totals by Motive.....	27
Murder Victims	31
Murder Offenders	43

Introduction

The Chicago Police Department's Detective Division houses a database with information pertaining to murders that occurred in Chicago. The database includes various types of information pertaining to each murder, including the following:

- The police area and district in which the murder occurred
- Clearances, or resolutions of murder investigations
- The type of geographic location where the victim was found (e.g., on the street, in a residence)
- The time, day, and month of the murder incident and of the victim's death
- The type of weapon used to commit the murder and, related to this, the method by which the victim was killed
- The motive that precipitated the murder
- Victim demographic information (race, age, sex, and whether the victim had a prior Chicago Police Department arrest record)
- Offender demographic information (race, age, sex, and whether the offender has a prior Chicago Police Department arrest record)
- For each murder incident, the number of offenders involved

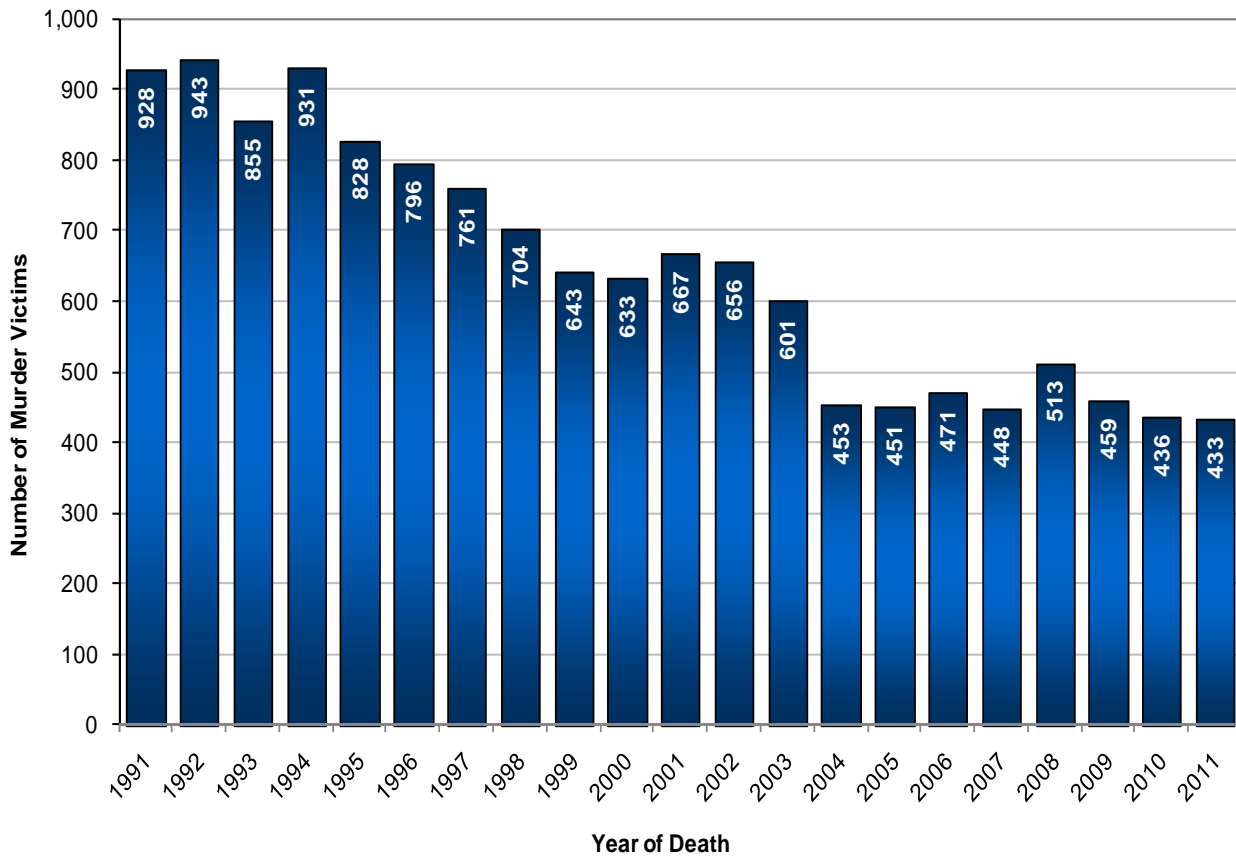
Some of this information is initially entered into the database shortly following each murder incident. Additional information pertaining to the incident is periodically added as the Detective Division receives updated information. Because of these updates, the data for this report is only accurate as of the date on which it was extracted. Data for this report was extracted on January 6, 2012. This data was used to examine the characteristics of 2011 murders, and annual murder trends from 1991 to 2011.



Murder Totals in the City of Chicago

Figure 1 shows that there were 433 murder victims in the City of Chicago in 2011. The 2011 total was 0.7% lower than the total in 2010 and 53.3% lower than the total for 1991.

FIGURE 1: NUMBER OF MURDER VICTIMS IN THE CITY OF CHICAGO, 1991 TO 2011



Murder Totals by Area and District

Table 1 shows 2010 and 2011 murder victim totals by the police area and police district in which the victim was found. The greatest number of murders occurred in Area 1 and Area 2.

**TABLE 1: 2010 AND 2011 MURDER VICTIM TOTALS
BY AREA AND DISTRICT**

Area	District	2010	2011
1	2	19	15
	7	40	60
	8	36	28
	9	28	31
	21	2	5
Area 1 Total		125	139

Area	District	2010	2011
2	3	28	36
	4	31	19
	5	29	27
	6	40	36
	22	23	15
Area 2 Total		151	133

Area	District	2010	2011
3	19	0	4
	20	2	5
	23	5	4
	24	7	4
Area 3 Total		14	17

Area	District	2010	2011
4	10	30	30
	11	50	43
	12	8	10
	13	7	4
Area 4 Total		95	87

Area	District	2010	2011
5	14	3	6
	15	18	19
	16	5	3
	17	6	8
	25	16	17
Area 5 Total		48	53

Area	District	2010	2011
CCG *	1	1	1
	18	2	3
CCG Total		3	4

* Central Control Group – districts that include Chicago's central business region.



Murder Totals by Type of Location

Table 2 and Table 3 show the number of 2011 murder victims by the type of geographic location where the victim was found. Table 2 shows totals for indoor locations. Table 3 shows totals for outdoor locations. Note that these totals do not necessarily reflect where murders occurred. For instance, if a person was murdered in a motel and the body placed in an alley, the location would be recorded as alley because that is where the body was found.

In 2011, a majority of murder victims (82.4%) were found outdoors. The public way was the most common outdoor location. A residence (e.g., house, apartment, hotel room) was the most common indoor location.

**TABLE 2: 2011 MURDER VICTIMS
BY INDOOR LOCATION TYPE**

Structure	Description	Total
C.H.A. BUILDING	CHA Apartment	2
		<u>2</u>
COMMERCIAL	Gas Station	4
	Restaurant	3
	Retail Store	7
	Salon	1
		<u>15</u>
MISC. LOCATIONS	Abandoned Building	1
		<u>1</u>
PLACE OF ENTERTAINMENT	Club	2
		<u>2</u>
RESIDENCE	Apartment	31
	Basement	1
	Garage	1
	Hallway	2
	Hotel	1
	House	20
		<u>56</u>
TOTAL INDOORS		76

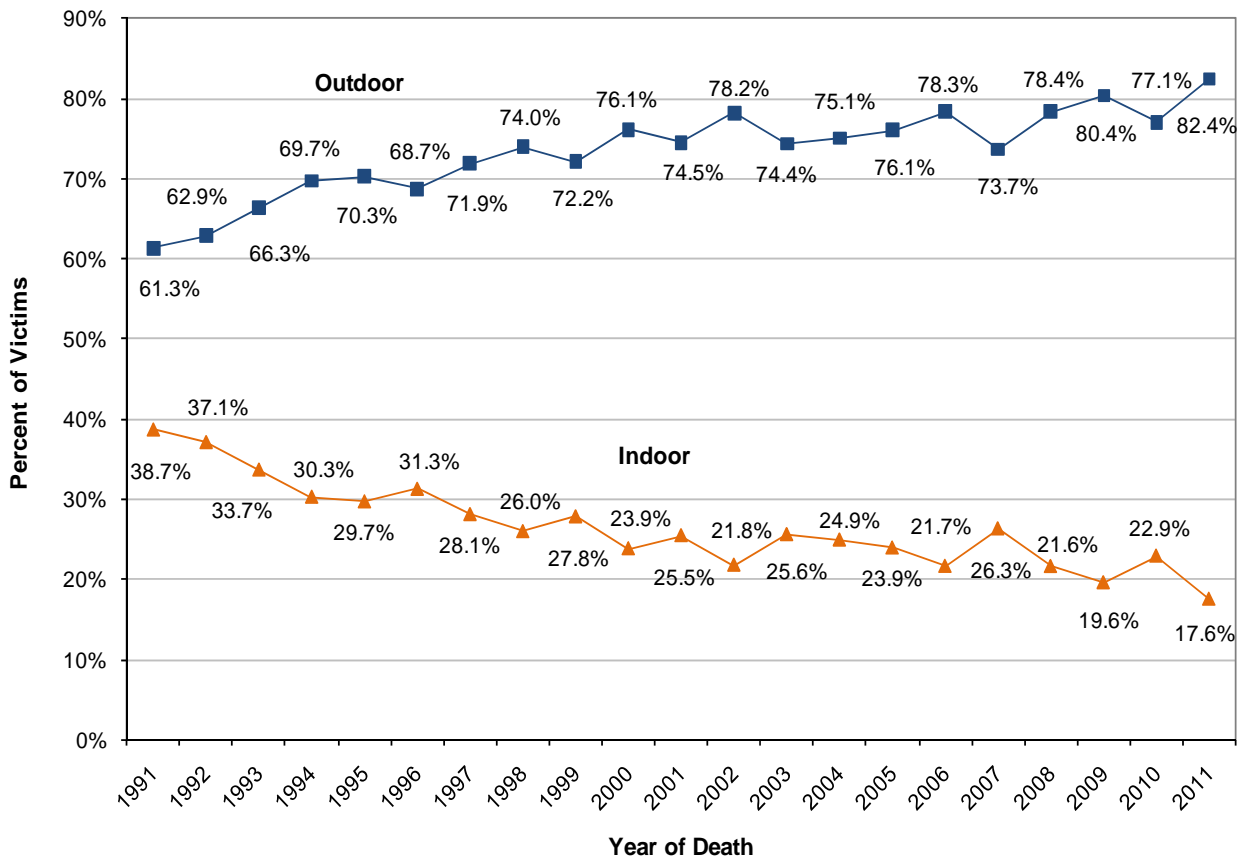


**TABLE 3: 2011 MURDER VICTIMS
BY OUTDOOR LOCATION TYPE**

Structure	Description	Total
C.H.A. PROPERTIES	CHA Parking Lot	1
	CHA Playlot	1
		<u>2</u>
MISC. LOCATIONS	Gas Station Drive/Prop.	3
	Park Property	9
	Parking Lot	4
	Vacant Lot	4
		<u>20</u>
PUBLIC TRANSPORTATION	CTA "L" Platform	1
	CTA Bus	1
		<u>2</u>
PUBLIC WAY	Alley	19
	Auto	52
	Street	225
		<u>296</u>
RESIDENTIAL AREA	Driveway	1
	Gangway	6
	Porch	15
	Yard	15
		<u>37</u>
TOTAL OUTDOORS		357

Figure 2 shows trends from 1991 to 2011 in the percentage of indoor and outdoor murder victims. Table 4 shows the corresponding totals. As illustrated in Figure 2, since 1991 there has been an overall increasing trend in the percentage of murders occurring outdoors.

FIGURE 2: PERCENTAGE OF MURDER VICTIMS FOUND OUTDOORS VS. INDOORS, 1991 TO 2011



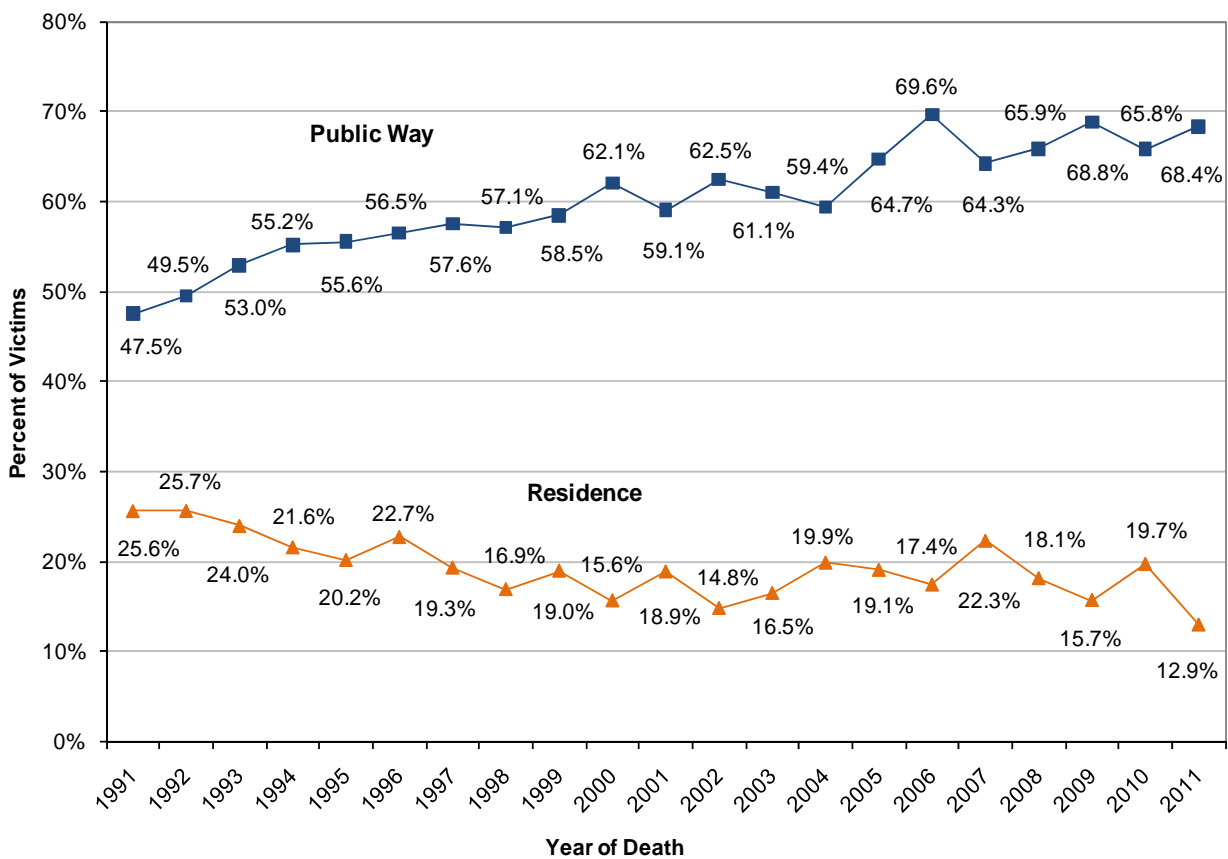
**TABLE 4: INDOOR AND OUTDOOR MURDERS,
TOTALS - 1991 TO 2011**

Year	Indoor	Outdoor	Total
1991	359	569	928
1992	350	593	943
1993	288	567	855
1994	282	649	931
1995	246	582	828
1996	249	547	796
1997	214	547	761
1998	183	521	704
1999	179	464	643
2000	151	482	633
2001	170	497	667
2002	143	513	656
2003	154	447	601
2004	113	340	453
2005	108	343	451
2006	102	369	471
2007	118	330	448
2008	111	402	513
2009	90	369	459
2010	100	336	436
2011	76	357	433

Trends in the percentage of victims found at specific types of indoor and outdoor locations were also examined. A large percentage of murders occur on the public way or inside a residence. The public way includes locations such as alleys, autos, and streets. Residence includes areas inside a variety of residential structure types, such as an apartment, house, motel, or rooming house. Figure 3 shows trends in the percentage of victims found at these two types of locations from 1991 to 2011. Table 5 shows corresponding totals.

As indicated in Figure 3, there was an increasing trend in the percentage of murders occurring on the public way, while there was a slight, overall downward trend in the percentage of murders occurring in residences.

FIGURE 3: PERCENTAGE OF MURDER VICTIMS FOUND AT PUBLIC WAY AND RESIDENCE, 1991 TO 2011



**TABLE 5: MURDER VICTIMS FOUND AT PUBLIC WAY AND RESIDENCE,
TOTALS - 1991 TO 2011**

Year	Public Way	Residence	Total *
1991	441	238	928
1992	467	242	943
1993	453	205	855
1994	514	201	931
1995	460	167	828
1996	450	181	796
1997	438	147	761
1998	402	119	704
1999	376	122	643
2000	393	99	633
2001	394	126	667
2002	410	97	656
2003	367	99	601
2004	269	90	453
2005	292	86	451
2006	328	82	471
2007	288	100	448
2008	338	93	513
2009	316	72	459
2010	287	86	436
2011	296	56	433

* Annual total – includes murder victims who were not found on the public way or at a residence.



Murder Clearances

Murders are cleared when an arrest is made and the arrestee is prosecuted. Murders may also be cleared exceptionally. In the Uniform Crime Reporting Handbook, the Federal Bureau of Investigation lists circumstances in which murders may be cleared exceptionally. To exceptionally clear cases police officials must have identified the suspect, have enough evidence to support the arrest and charging of the suspect, know where the suspect is, but some circumstance exists as to why the suspect cannot be arrested, charged, or prosecuted. These circumstances include, but are not limited to: (1) offender suicides, (2) double murders (i.e., two persons kill each other), (3) deathbed confessions, (4) instances when the offender is killed by the police or a citizen, (5) instances when an offender who is already in custody or serving a sentence confesses to the murder, (6) instances when an offender is prosecuted by state or local authorities in another city for a different offense or prosecuted in another city or state by the Federal government for an offense which may be the same, (7) instances when extradition is denied, (8) instances when the offender dies after a warrant is issued, but before being taken into custody, or (9) the prosecution refuses to prosecute the case.

Table 6 shows 2011 murder clearance data, broken down by area and district. The “2011 Murders Cleared in 2011” column in Table 6 indicates the number of murders committed in 2011 that were also cleared in 2011. In addition, the “1991-2011 Murders Cleared in 2011” column in Table 6 indicates the number of murders committed in prior years that were then cleared in 2011. Table 7 shows, from 1991-2011, the total number of murders per year and the number of murders cleared in the same year they were committed.



TABLE 6: 2011 MURDER CLEARANCE DATA

Area	District	Total Murders in 2011	2011 Murders Cleared in 2011	1991-2010 Murders Cleared in 2011
1	2	15	6	1
	7	60	14	5
	8	28	4	7
	9	31	6	7
	21	5	2	2
Area 1 Total		139	32	22
2	3	36	7	8
	4	19	3	5
	5	27	10	6
	6	36	12	2
	22	15	3	1
Area 2 Total		133	35	22
3	19	4	2	2
	20	5	4	2
	23	4	1	0
	24	4	2	1
Area 3 Total		17	9	5
4	10	30	11	6
	11	43	11	9
	12	10	8	1
	13	4	0	2
Area 4 Total		87	30	18
5	14	6	4	2
	15	19	4	7
	16	3	3	0
	17	8	4	3
	25	17	5	7
Area 5 Total		53	20	19
CCG *	1	1	0	0
	18	3	2	0
CCG Total		4	2	0
Citywide Total		433	128	86

* Central Control Group – districts that include Chicago's central business region.



**TABLE 7: MURDER CLEARANCES,
1991 TO 2011**

Year	Total	Total Cleared in Same Year
1991	928	619
1992	943	572
1993	855	539
1994	931	546
1995	828	483
1996	796	412
1997	761	409
1998	704	346
1999	643	295
2000	633	263
2001	667	299
2002	656	288
2003	601	254
2004	453	212
2005	451	187
2006	471	168
2007	448	160
2008	513	167
2009	459	140
2010	436	124
2011	433	128



Murder Totals by Day, Month, and Time

Figure 4 shows 2011 murder victim totals, broken down by the day of the week on which victims were injured. In 2011, approximately half of murders (49.2%) occurred on the weekend (Friday, Saturday, or Sunday).

FIGURE 4: MURDER VICTIMS BY DAY OF WEEK INJURED, 2011

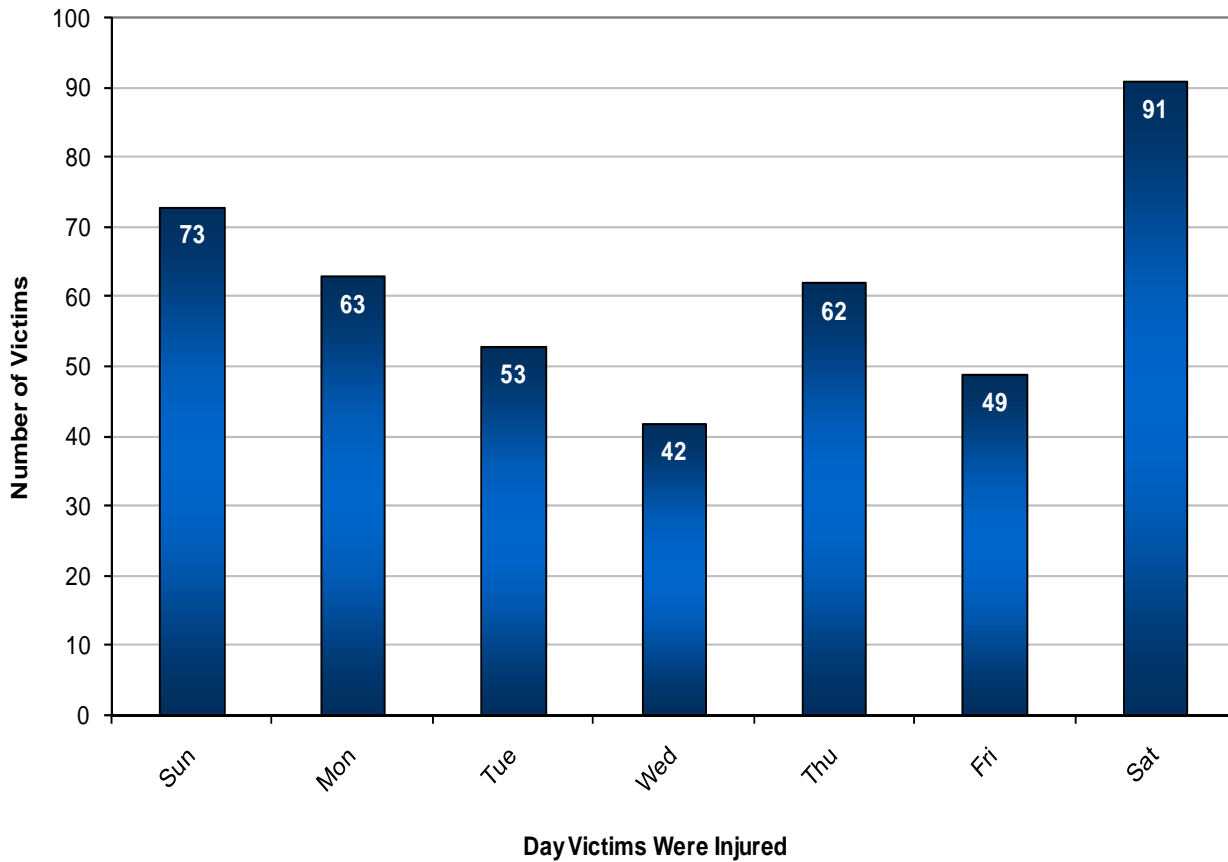
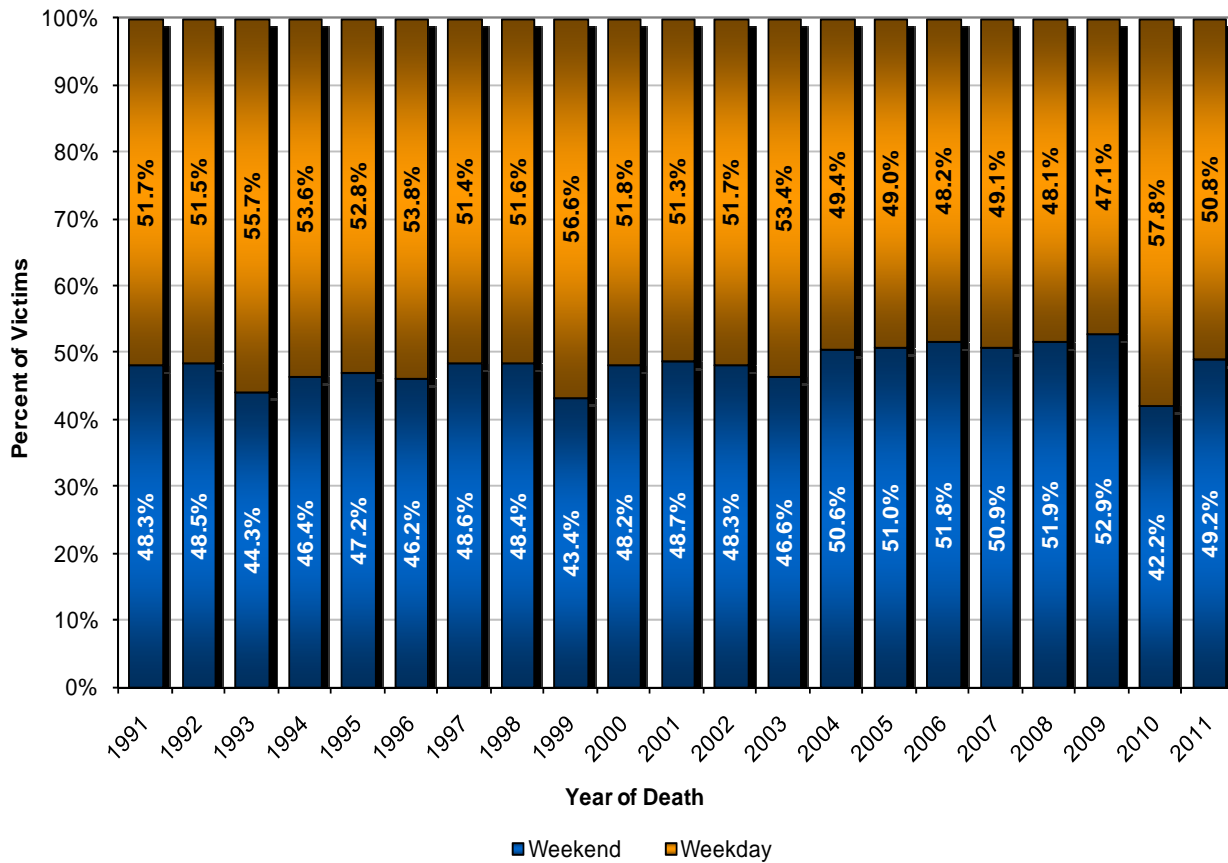


Figure 5 shows the percentage of murder victims injured on the weekend (Friday, Saturday, and Sunday) and on weekdays (Monday thru Thursday) from 1991 to 2011. Table 8 provides the underlying data. As indicated in Figure 5, from 1991 to 2011, approximately 50 percent of victims were injured during the weekend.

FIGURE 5: WEEKEND VS. WEEKDAY MURDER VICTIMS, PERCENTAGES - 1991 to 2011



**TABLE 8: WEEKEND VS. WEEKDAY MURDER VICTIMS,
TOTALS - 1991 to 2011**

Year	Weekday	Weekend	Total
1991	480	448	928
1992	486	457	943
1993	476	379	855
1994	499	432	931
1995	437	391	828
1996	428	368	796
1997	391	370	761
1998	363	341	704
1999	364	279	643
2000	328	305	633
2001	342	325	667
2002	339	317	656
2003	321	280	601
2004	224	229	453
2005	221	230	451
2006	227	244	471
2007	220	228	448
2008	247	266	513
2009	216	243	459
2010	252	184	436
2011	220	213	433



Figure 6 shows 2011 murder totals by the month during which victims were injured. The figure shows a tendency for murders to decrease during the colder months of the year and increase during the warmer months of the year.

FIGURE 6: MURDER VICTIMS BY MONTH OF INJURY, 2011

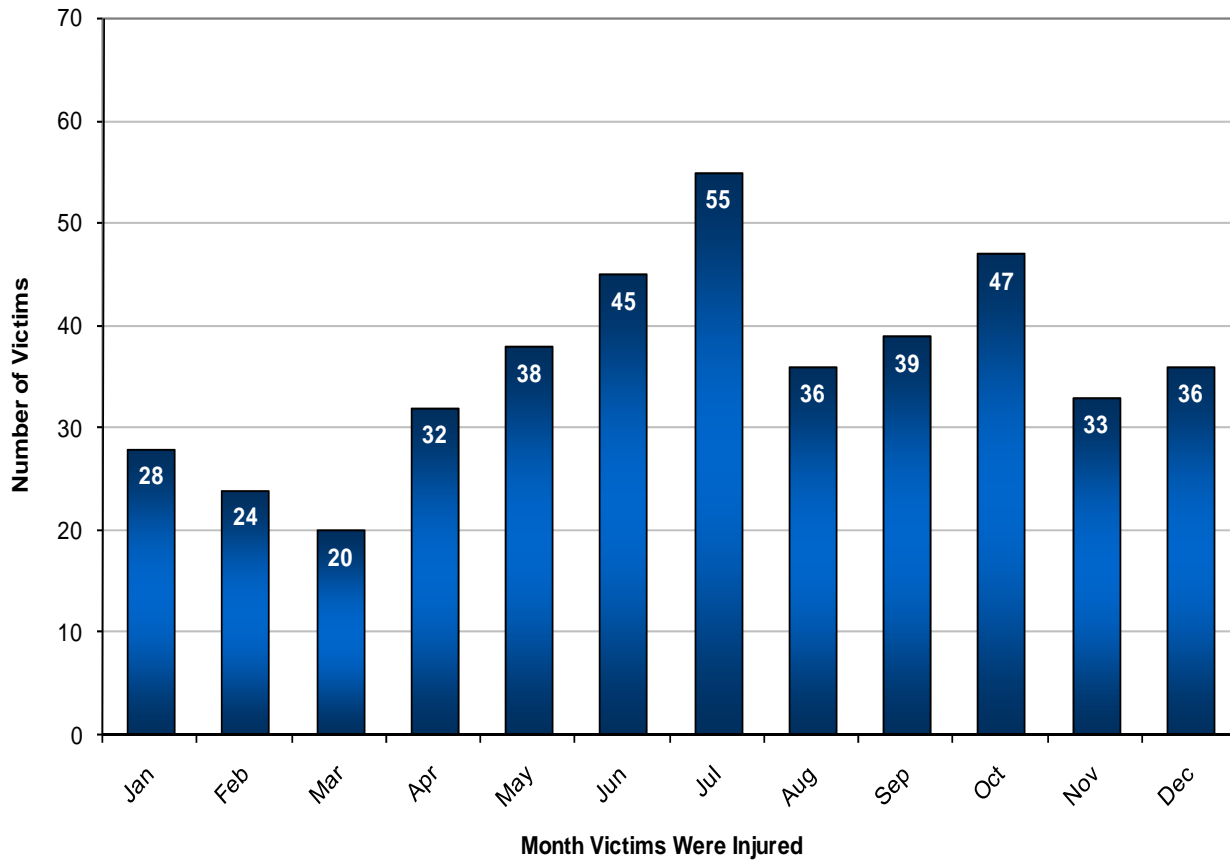
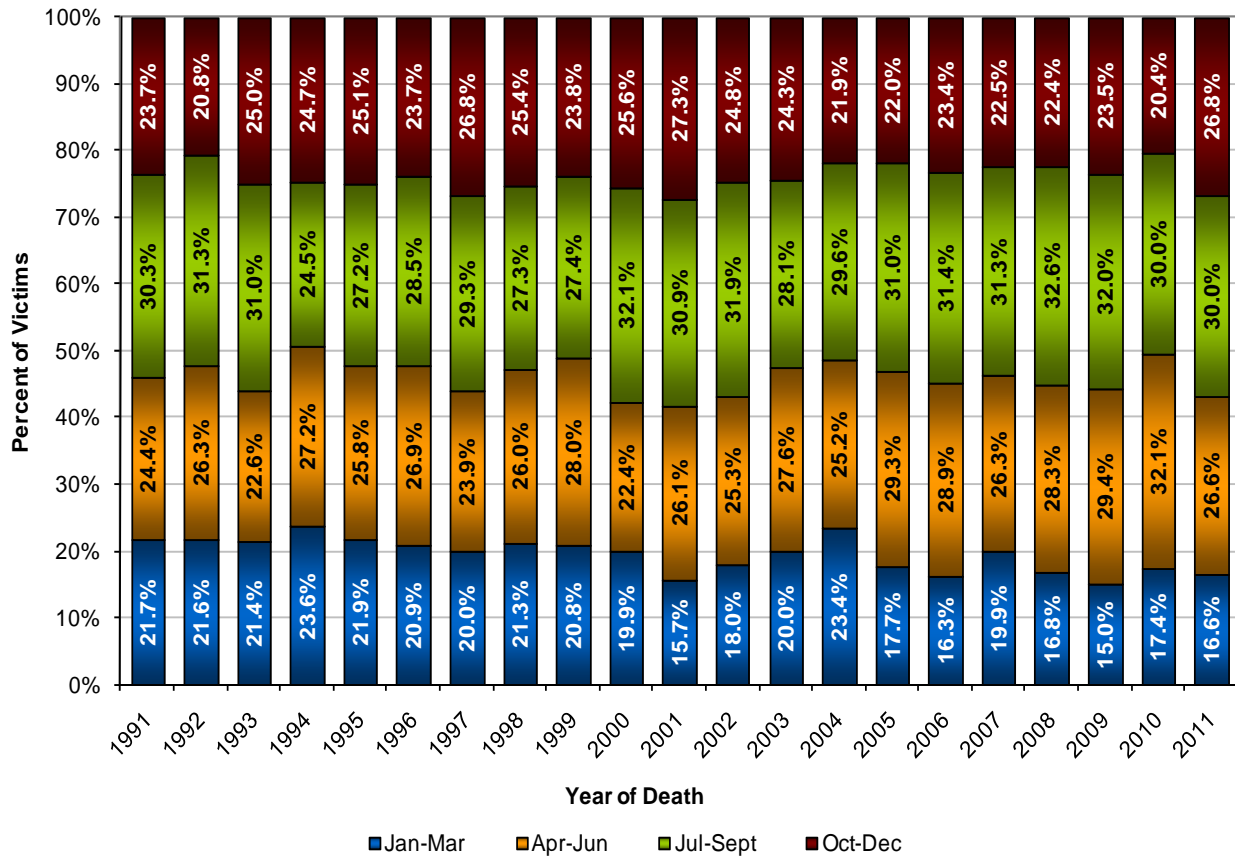


Figure 7 shows the percentage of murder victims by calendar quarter in which their injuries occurred. Table 9 shows corresponding totals. As shown in Figure 7, slightly higher percentages of murder victims were injured in quarters 2 and 3, or the warmest months of the year.

FIGURE 7: MURDER VICTIMS BY QUARTER, PERCENTAGES - 1991 to 2011



**TABLE 9: MURDER VICTIMS BY QUARTER,
TOTALS - 1991 TO 2011**

Year	Quarter 1	Quarter 2	Quarter 3	Quarter 4	Total
1991	201	226	281	220	928
1992	204	248	295	196	943
1993	183	193	265	214	855
1994	220	253	228	230	931
1995	181	214	225	208	828
1996	166	214	227	189	796
1997	152	182	223	204	761
1998	150	183	192	179	704
1999	134	180	176	153	643
2000	126	142	203	162	633
2001	105	174	206	182	667
2002	118	166	209	163	656
2003	120	166	169	146	601
2004	106	114	134	99	453
2005	80	132	140	99	451
2006	77	136	148	110	471
2007	89	118	140	101	448
2008	86	145	167	115	513
2009	69	135	147	108	459
2010	76	140	131	89	436
2011	72	115	130	116	433



Figure 8 shows 2011 murders by the hour that victims were injured. As indicated in Figure 8, a notable number of murders occurred between 1600 and 0259 hours.

FIGURE 8: MURDER VICTIMS BY HOUR OF INJURY, 2011

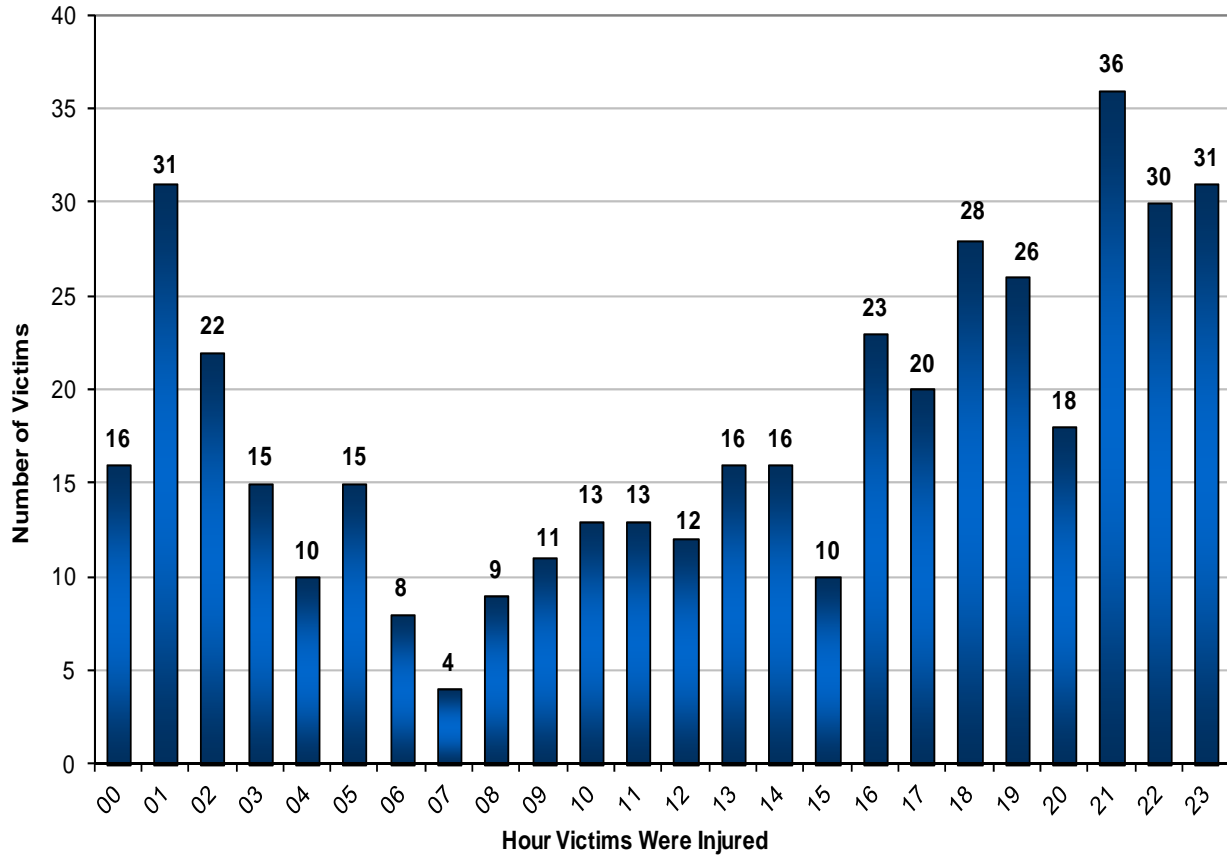
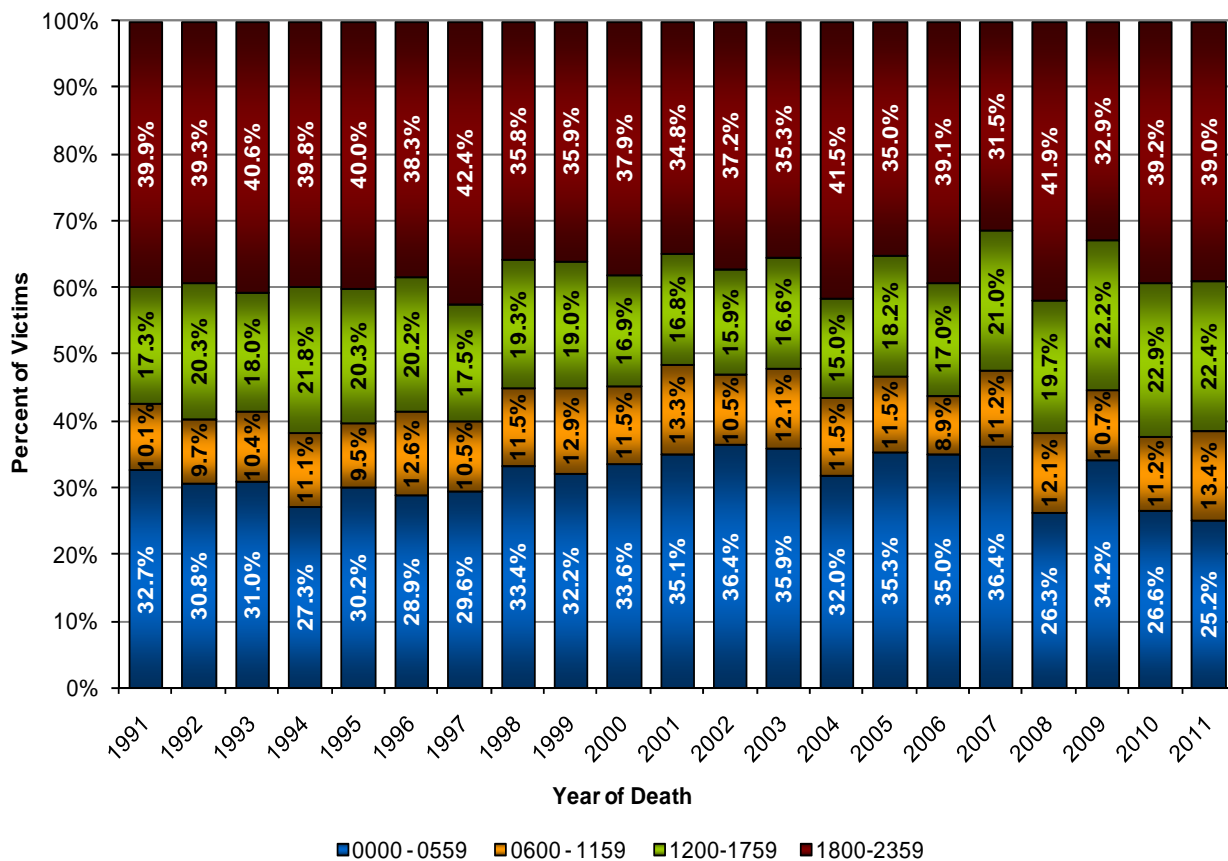


Figure 9 shows the percentage of murders from 1991 to 2011 that occurred during six-hour intervals that approximate early morning, morning, daytime, and evening hours. Table 10 provides the underlying data. As shown in Figure 9, throughout the time period examined, the majority of murder victims were injured during evening or early morning hours.

FIGURE 9: MURDER VICTIMS BY HOUR OF INJURY, PERCENTAGES – 1991 TO 2011



**TABLE 10: MURDER VICTIMS BY HOUR OF INJURY,
TOTALS - 1991 TO 2011**

Year	Hour of Injury				Total
	0000 - 0559	0600 - 1159	1200- 1759	1800- 2359	
1991	303	94	161	370	928
1992	290	91	191	371	943
1993	265	89	154	347	855
1994	254	103	203	371	931
1995	250	79	168	331	828
1996	230	100	161	305	796
1997	225	80	133	323	761
1998	235	81	136	252	704
1999	207	83	122	231	643
2000	213	73	107	240	633
2001	234	89	112	232	667
2002	239	69	104	244	656
2003	216	73	100	212	601
2004	145	52	68	188	453
2005	159	52	82	158	451
2006	165	42	80	184	471
2007	163	50	94	141	448
2008	135	62	101	215	513
2009	157	49	102	151	459
2010	116	49	100	171	436
2011	109	58	97	169	433

Murder Totals by Method

Table 11 shows methods used to commit 2011 murders. Table 12 shows, for each method, a list of the weapons used to commit the murder. In 2011, 83.4% of victims were shot. Nearly all of those shootings involved handguns.

TABLE 11: MURDER METHODS, 2011

Type of Injury	Total	Percent
Shot	361	83.4%
Stabbed	29	6.7%
Assault	28	6.5%
Strangulation	4	0.9%
Blunt Force Injury	5	1.2%
Asphyxiation	1	0.2%
Other	5	1.2%
Total	433	100.0%

TABLE 12: WEAPONS USED TO COMMIT MURDERS, 2011*

Injury	Weapon	Total
SHOT	Handgun	351
	Rifle	1
	Shotgun	5
	Unknown/Other	5
		362
STABBED	Knife	17
	Other Stabbing/Cutting	3
	Pocket Knife	1
	Unknown	10
		31
ASSAULT	Baseball Bat	1
	Hands/Feet/Fists	13
	Other Bludgeon Type	2
	Unknown	8
	Unknown Bludgeon	4
		28
STRANGULATION	Hands/Feet	1
	Unknown	3
		4
BLUNT FORCE INJURY	Automobile	3
	Hands/Feet/Fists	1
	Unknown	1
		5

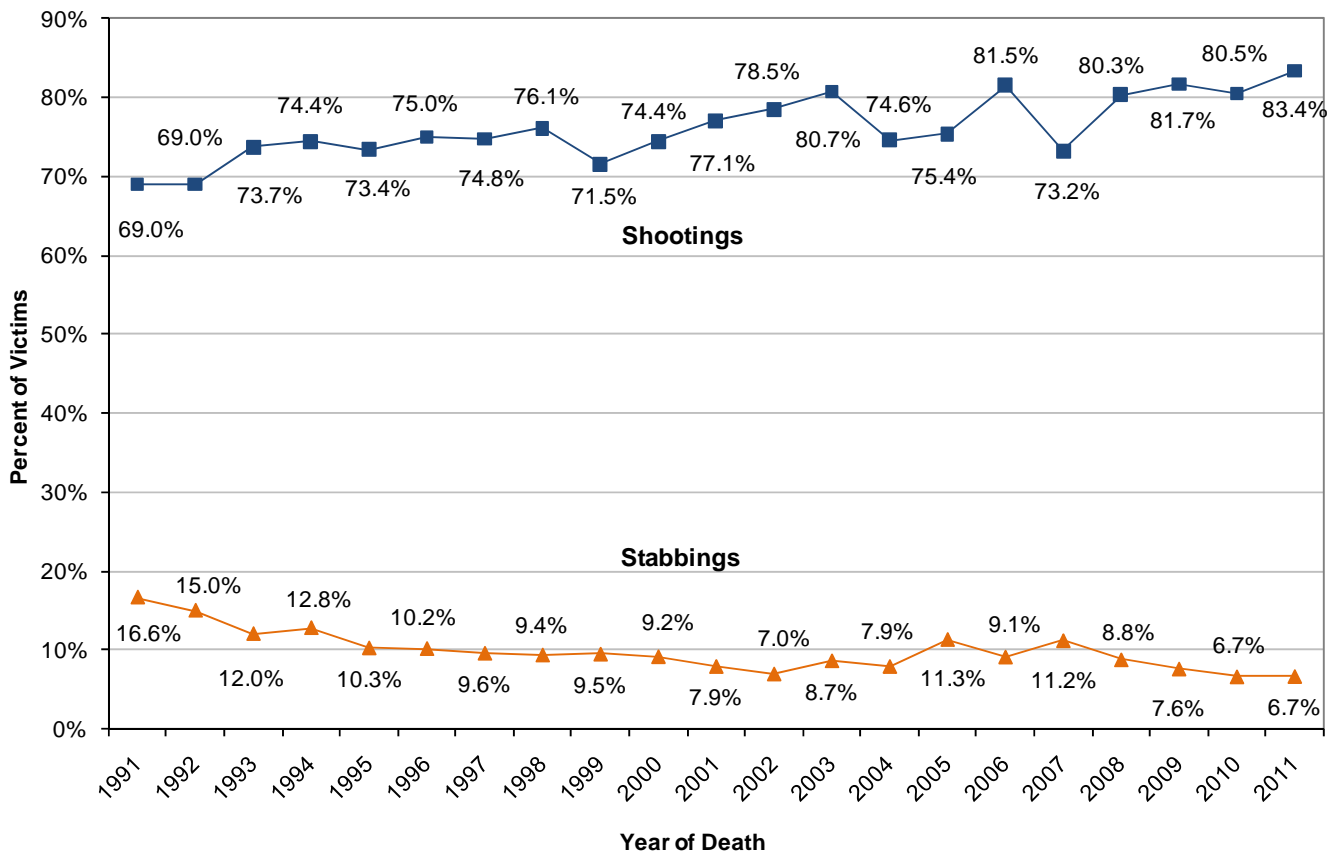
TABLE 12 CONTINUED: WEAPONS USED TO COMMIT MURDERS, 2011*

Injury	Weapon	Total
ASPHYXIATION	Pry Bar	1
		<u>1</u>
OTHER	Automobile	1
	Hands/Feet/Fists	2
	Others	1
	Unknown	1
		<u>5</u>
TOTAL		436 *

* The CPD data system allows users to record multiple weapons per murder. Hence, the weapon total exceeds the annual murder total (433).

Figure 10 shows trends in the percentage of murders in which the victim was shot or stabbed. Table 13 shows corresponding totals. Since 1991, there has been an upward trend in the percentage of murders in which the victim was shot, and a downward trend in the percentage of murders in which the victim was stabbed.

FIGURE 10: PERCENTAGE OF MURDERS THAT WERE SHOOTINGS AND STABBINGS, 1991 TO 2011



**TABLE 13: SHOOTINGS AND STABBINGS,
TOTALS - 1991 TO 2011**

Year	Shot	Stabbed
1991	640	154
1992	651	141
1993	630	103
1994	693	119
1995	608	85
1996	597	81
1997	569	73
1998	536	66
1999	460	61
2000	471	58
2001	514	53
2002	515	46
2003	485	52
2004	338	36
2005	340	51
2006	384	43
2007	328	50
2008	412	45
2009	375	35
2010	351	29
2011	361	29



Murder Totals by Motive

Table 14 shows motives for 2011 murders. In 2011, the majority of murders were the result of an altercation. The majority of these altercations were related to street gang activity.

TABLE 14: MURDER MOTIVES, 2011

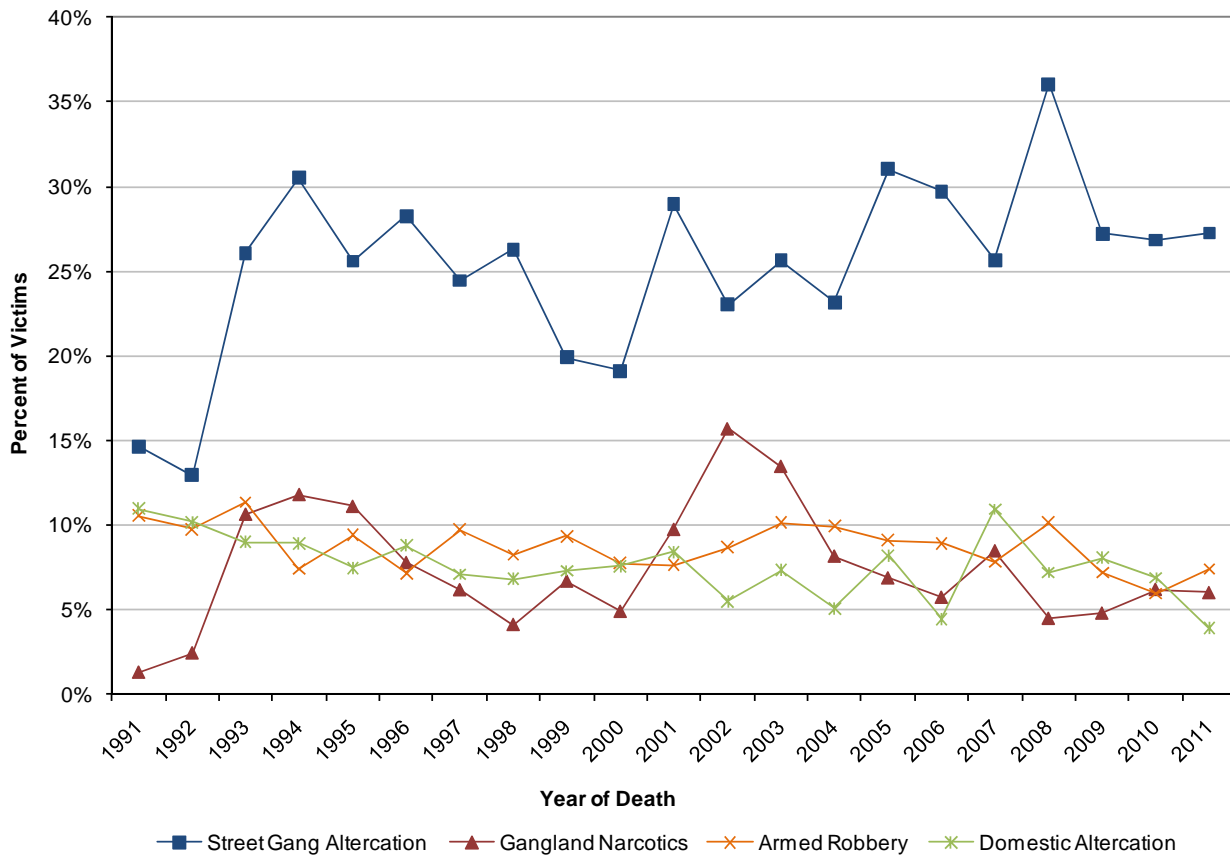
Motive	Total
<i>Altercation</i>	
General Domestic	17
Liquor	1
Love Triangle	5
Money	7
Other	56
Over Gambling	3
Sex	4
Street Gangs	118
Theft (Alleged)	5
Traffic	3
	219
 <i>Burglary</i>	
	1
 <i>Gangland</i>	
Narcotics	26
	26
 <i>Narcotics</i>	
Territorial	3
	3

TABLE 14 CONTINUED: MURDER MOTIVES, 2011

Motive	Total
<i>Other</i>	
Attempt Theft	1
Child Abuse	9
Mental Disorder	2
Retaliation	14
	<hr/>
	26
<i>Robbery</i>	
Armed	32
Strong Arm	4
	<hr/>
	36
<i>Sex</i>	
Assault of Women	1
	<hr/>
	1
<i>Undetermined</i>	121
Total	433

Figure 11 shows trends in the percentage of murders caused by four common motives (street gang altercations, gangland narcotics, armed robbery, and domestic altercations). Table 15 shows corresponding totals. For street gang altercations, the overall trend increased from 1991 to 2011, albeit with large fluctuations.

FIGURE 11: PERCENTAGE OF MURDERS CAUSED BY FOUR COMMON MOTIVES, 1991 TO 2011



**TABLE 15: MURDERS CAUSED BY FOUR COMMON MOTIVES,
TOTALS - 1991 TO 2011**

Year	Street Gang Altercation	Gangland Narcotics	Armed Robbery	Domestic Altercation
1991	136	12	98	102
1992	122	23	92	96
1993	223	91	97	77
1994	284	110	69	83
1995	212	92	78	62
1996	225	62	57	70
1997	186	47	74	54
1998	185	29	58	48
1999	128	43	60	47
2000	121	31	49	48
2001	193	65	51	56
2002	151	103	57	36
2003	154	81	61	44
2004	105	37	45	23
2005	140	31	41	37
2006	140	27	42	21
2007	115	38	35	49
2008	185	23	52	37
2009	125	22	33	37
2010	117	27	26	30
2011	118	26	32	17



Murder Victims

This section describes the following characteristics of murder victims: (1) age at date of death, (2) sex, (3) race/ethnicity, and (4) whether the victim had a prior arrest history.

In 2011, victim ages ranged from 1 to 80 years old at the date of death. The average age was 28 years old. The most frequent ages were 20 and 23 years old. Figure 12 shows the ages of murder victims for 2011.

FIGURE 12: NUMBER OF MURDER VICTIMS BY AGE AT DATE OF DEATH, 2011

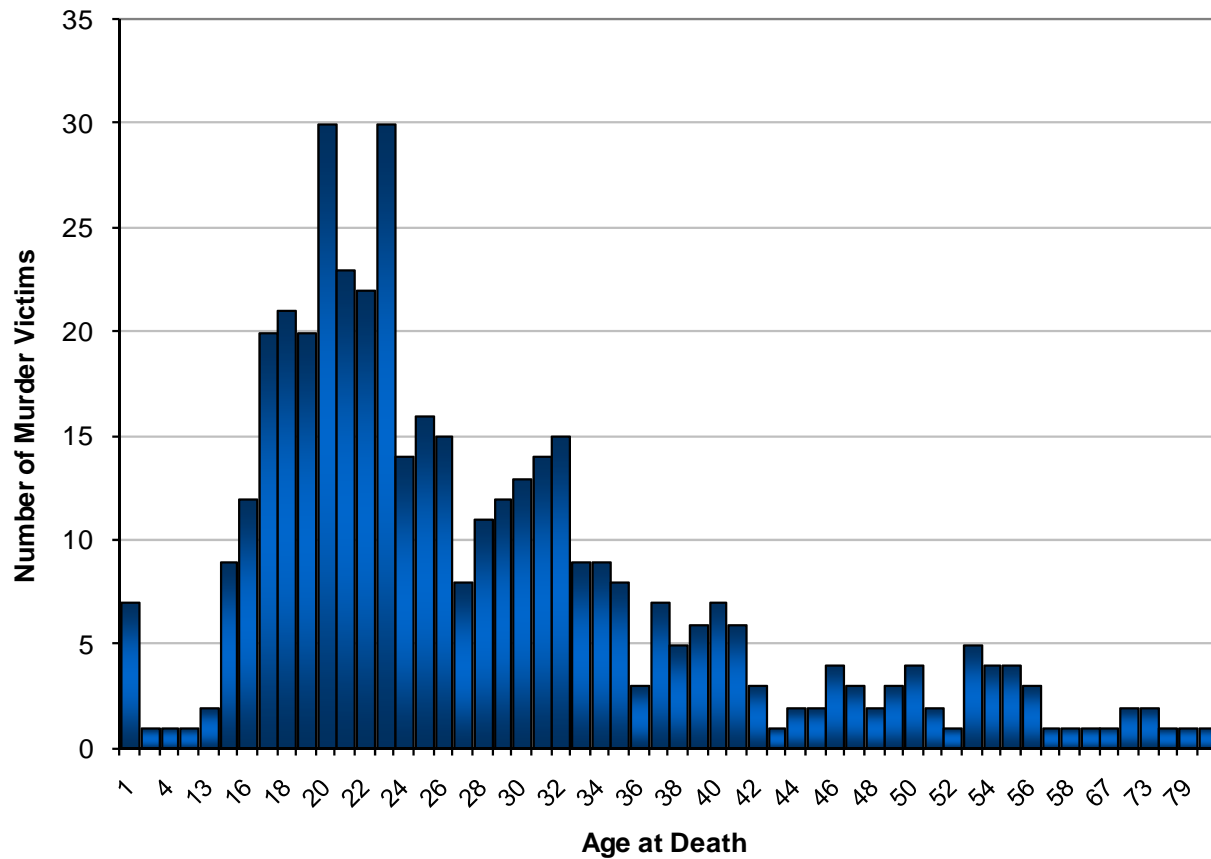
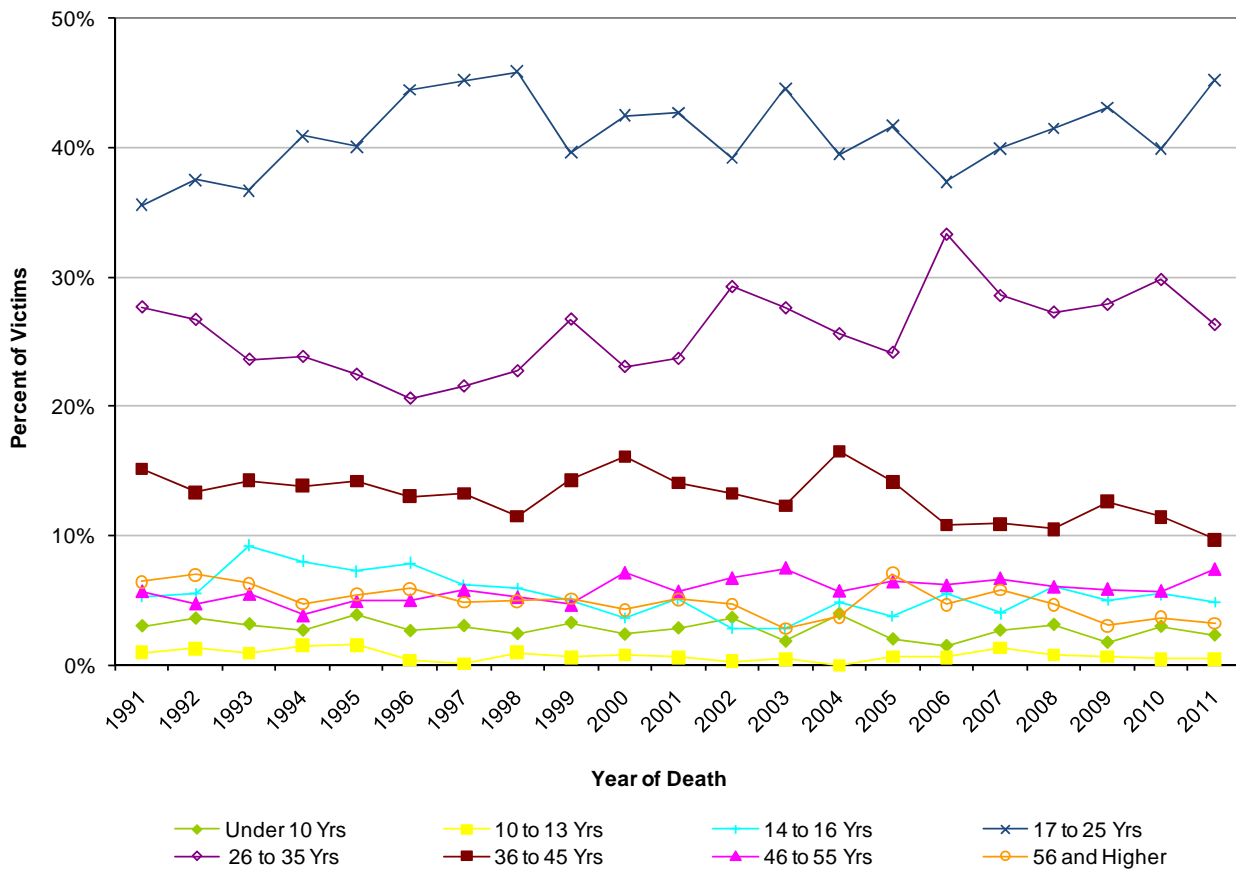


Figure 13 shows the percent of murder victims by age group from 1991 to 2011. Table 16 shows corresponding totals. As indicated in the figure, persons between 17 and 25 accounted for the largest percentage of murder victims during the time period examined. The figure also shows that, despite some fluctuation, the age ranges of murder victims have remained relatively stable from 1991 to 2011.

FIGURE 13: PERCENTAGE OF MURDER VICTIMS BY AGE GROUP, 1991 TO 2011



**TABLE 16: MURDER VICTIMS BY AGE GROUP,
TOTALS - 1991 TO 2011 ***

Year	Under 10 Yrs	10 to 13 Yrs	14 to 16 Yrs	17 to 25 Yrs	26 to 35 Yrs	36 to 45 Yrs	46 to 55 Yrs	Over 55 Yrs	Total
1991	28	9	49	330	257	141	53	60	928
1992	34	12	52	354	252	126	45	66	943
1993	27	8	79	314	202	122	47	54	855
1994	25	14	75	381	222	129	36	44	931
1995	32	13	60	332	186	118	41	45	828
1996	21	3	63	354	164	104	40	47	796
1997	23	1	47	344	164	101	44	37	761
1998	17	7	42	323	160	81	37	35	704
1999	21	4	32	255	172	92	30	33	643
2000	15	5	23	269	146	102	45	27	633
2001	19	4	34	285	158	94	38	34	667
2002	24	2	19	257	192	87	44	31	656
2003	11	3	17	268	166	74	45	17	601
2004	18	0	22	179	116	75	26	17	454
2005	9	3	17	188	109	64	29	32	451
2006	7	3	26	176	157	51	29	22	471
2007	12	6	18	179	128	49	30	26	448
2008	16	4	31	213	140	54	31	24	513
2009	8	3	23	198	128	58	27	14	459
2010	13	2	24	174	130	50	25	16	436
2011	10	2	21	196	114	42	32	14	433

* For a small number of murders, victim age was missing. As a result, for some years, the sum of the age group totals does not match the annual Total column.



Figure 14 shows the percentage of murder victims by sex for 2011. As shown, males accounted for the large majority of murder victims in 2011.

FIGURE 14: PERCENTAGE OF MURDER VICTIMS BY SEX, 2011

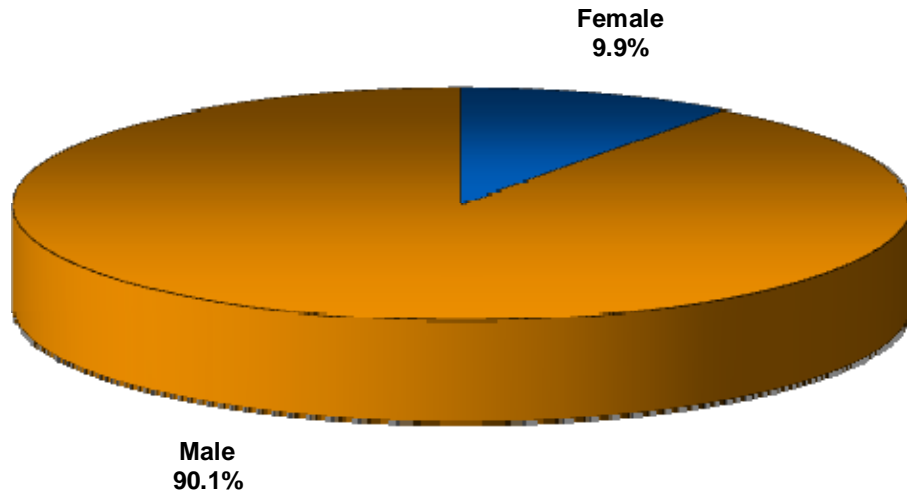
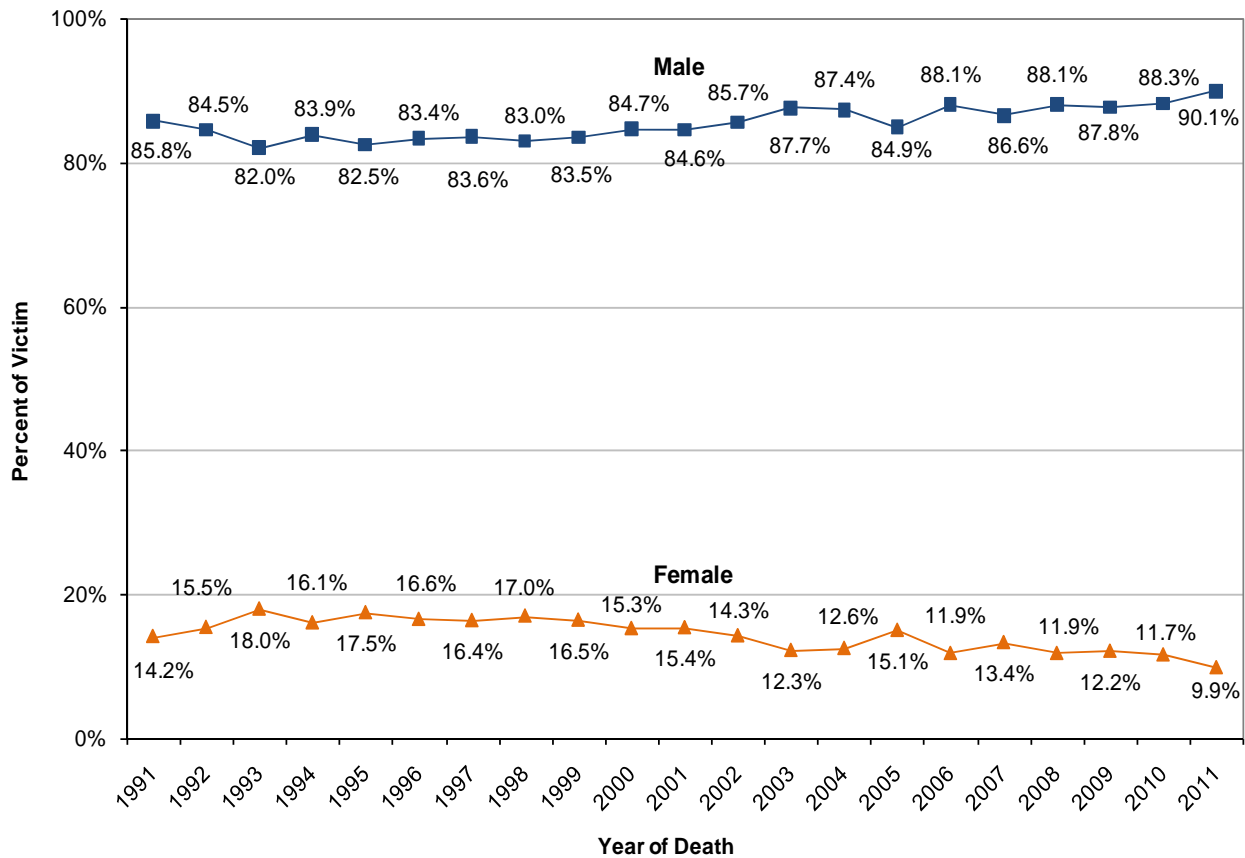


Figure 15 shows the percentage of murder victims by sex from 1991 to 2011. Table 17 provides the underlying data. As indicated in the figure and table, from 1991 to 2011, the large majority of murder victims were male.

FIGURE 15: PERCENTAGE OF MURDER VICTIMS BY SEX, 1991 TO 2011



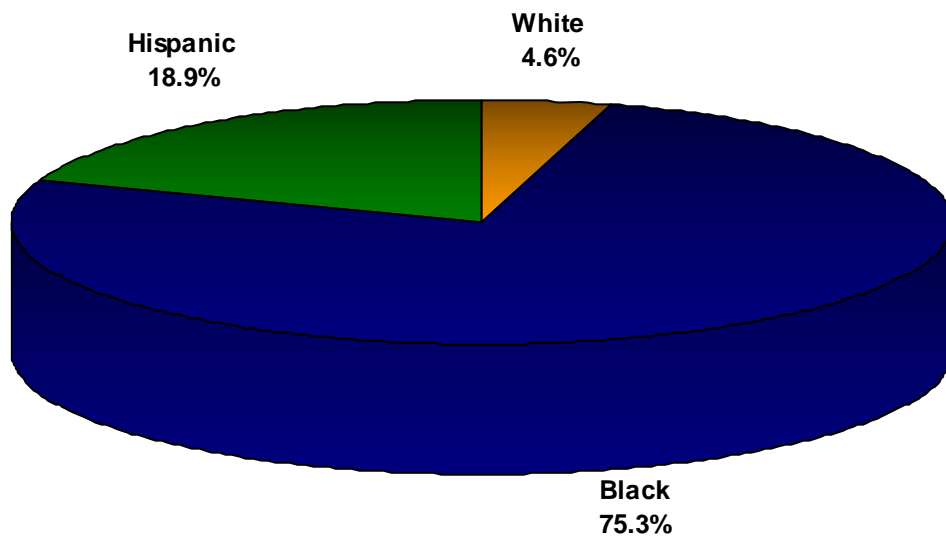
**TABLE 17: MURDER VICTIMS BY SEX,
TOTALS - 1991 TO 2011**

Year	Female	Male	Total
1991	132	796	928
1992	146	797	943
1993	154	701	855
1994	150	781	931
1995	145	683	828
1996	132	664	796
1997	125	636	761
1998	120	584	704
1999	106	537	643
2000	97	536	633
2001	103	564	667
2002	94	562	656
2003	74	527	601
2004	57	396	453
2005	68	383	451
2006	56	415	471
2007	60	388	448
2008	61	452	513
2009	56	403	459
2010	51	385	436
2011	43	390	433



Figure 16 shows the percentage of murder victims by race/ethnicity for 2011. The majority of murder victims were Black (75.3%), followed by Hispanic (18.9%).

FIGURE 16: PERCENTAGE OF MURDER VICTIMS BY RACIAL/ETHNIC GROUP, 2011 *

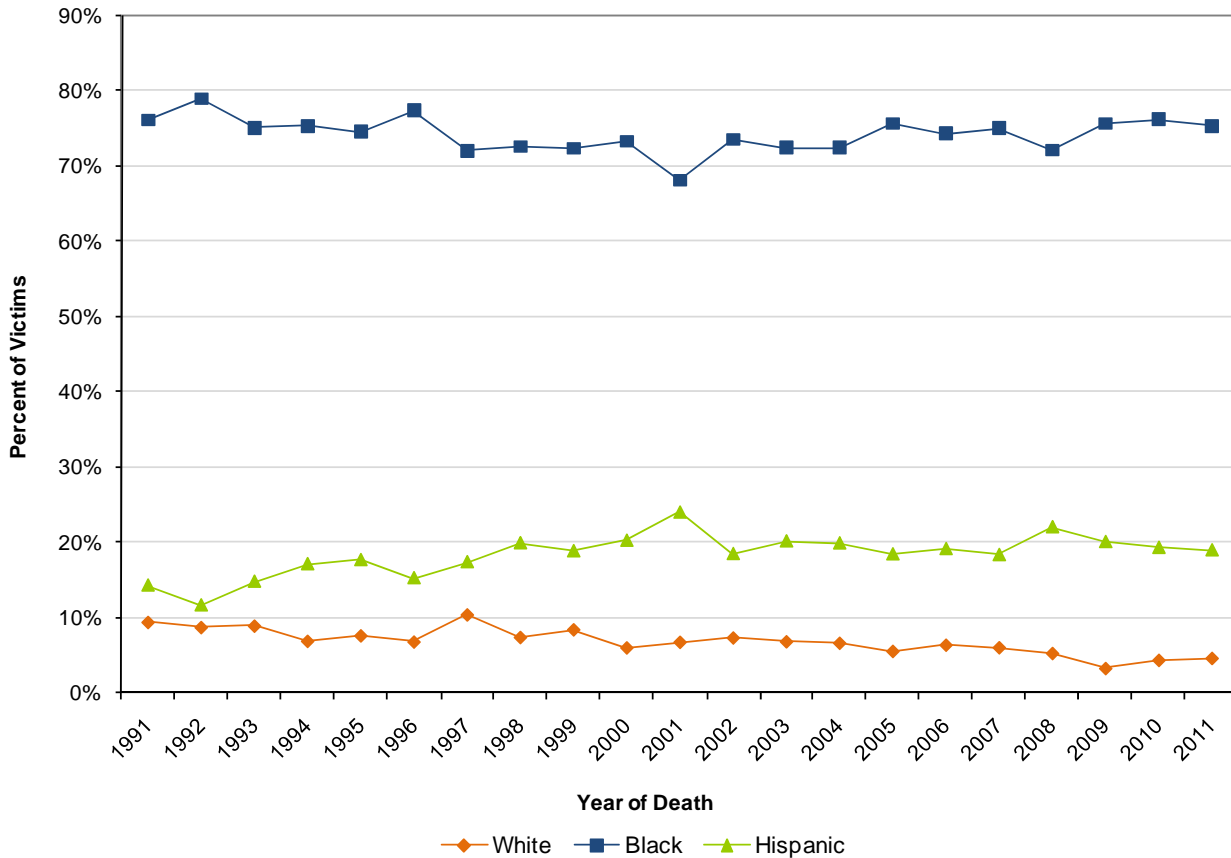


* Other racial/ethnic groups accounted for 1.2% of murder victims.



Figure 17 shows trends in the percentage of murder victims by race/ethnicity. Table 18 shows corresponding totals. As indicated in Figure 17, Black victim percentages have remained relatively stable, while Hispanic victim percentages increased slightly and White victim percentages decreased slightly.

FIGURE 17: PERCENTAGE OF MURDER VICTIMS BY RACE/ETHNICITY, 1991 TO 2011



**TABLE 18: MURDER VICTIMS BY RACE/ETHNICITY,
TOTALS – 2011 ***

Year	White	Black	Hispanic	Other	Total
1991	87	706	132	3	928
1992	82	744	109	8	943
1993	76	642	126	11	855
1994	64	701	159	7	931
1995	63	617	146	2	828
1996	54	616	121	5	796
1997	79	548	132	2	761
1998	52	511	140	1	704
1999	54	465	121	2	643
2000	38	464	128	3	633
2001	45	454	160	8	667
2002	48	482	121	5	656
2003	41	435	121	4	601
2004	30	329	90	5	454
2005	25	341	83	2	451
2006	30	350	90	1	471
2007	27	336	82	2	448
2008	27	370	113	3	513
2009	15	347	92	5	459
2010	19	332	84	1	436
2011	20	326	82	5	433

* For a small number of murders, victim race/ethnicity was missing. As a result, for some years, the sum of the racial/ethnic group totals does not match the annual Total column.

Figure 18 shows the percentage of 2011 murder victims who had a prior arrest history with the Chicago Police Department. As the figure indicates, the majority of 2011 murder victims had a prior arrest history.

FIGURE 18: PERCENTAGE OF MURDER VICTIMS WITH A PRIOR ARREST HISTORY, 2011

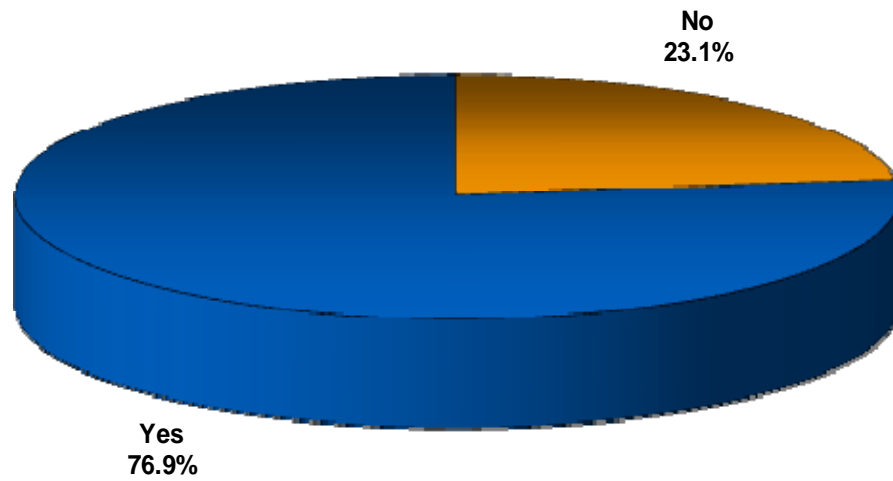
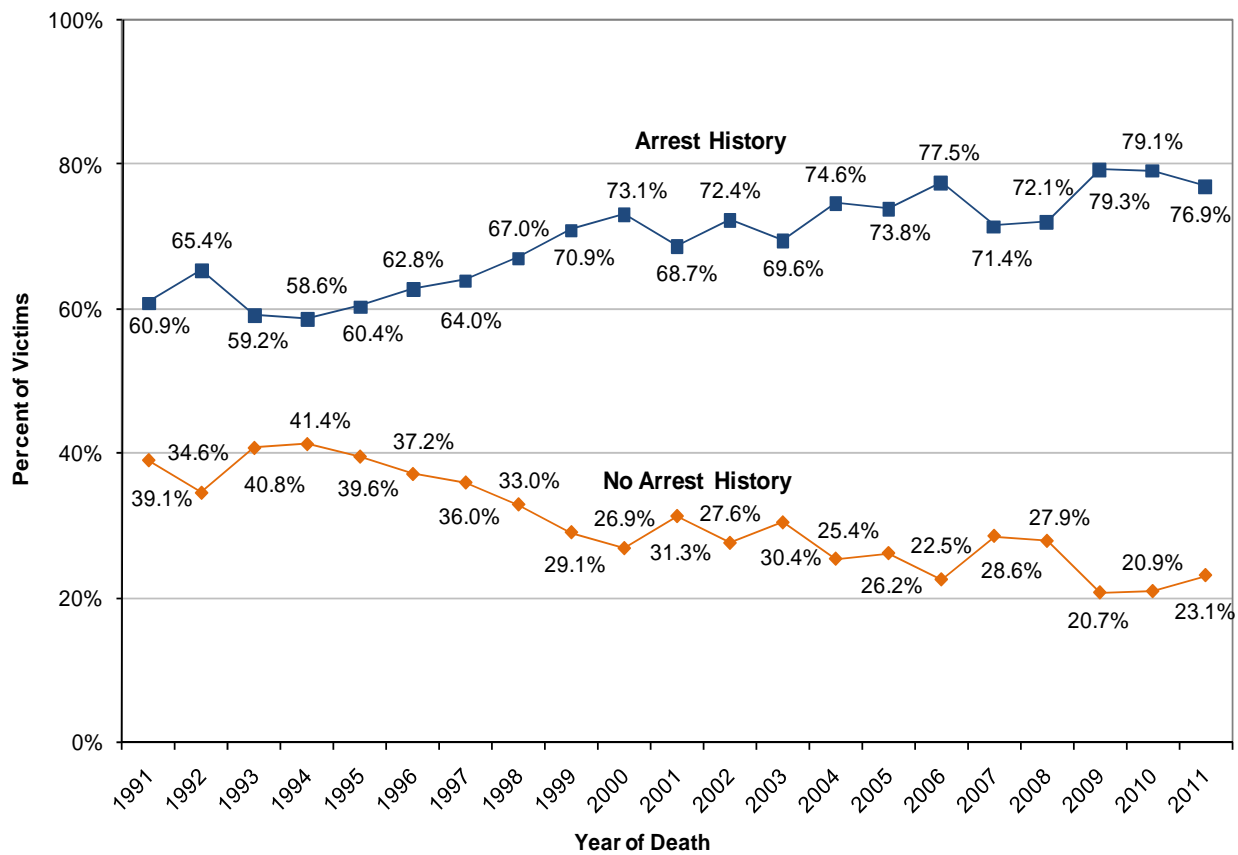


Figure 19 shows the percentage of murder victims from 1991 to 2011 who had a prior arrest history. Table 19 provides the underlying data. The percentage of victims who had a prior arrest history has increased since 1991, but the increase may be partially due to information system improvements that enabled detectives to determine if the victim had a prior arrest history more efficiently.

FIGURE 19: PERCENTAGE OF MURDER VICTIMS WITH A PRIOR ARREST HISTORY, 1991 TO 2011



**TABLE 19: MURDER VICTIMS WITH A PRIOR ARREST HISTORY,
TOTALS - 1991 TO 2011**

Year	No	Yes	Total
1991	363	565	928
1992	326	617	943
1993	349	506	855
1994	385	546	931
1995	328	500	828
1996	296	500	796
1997	274	487	761
1998	232	472	704
1999	187	456	643
2000	170	463	633
2001	209	458	667
2002	181	475	656
2003	183	418	601
2004	115	338	453
2005	118	333	451
2006	106	365	471
2007	128	320	448
2008	143	370	513
2009	95	364	459
2010	91	345	436
2011	100	333	433



Murder Offenders

This section describes the characteristics of murder offenders: (1) age at date of clearance, (2) sex, (3) race and ethnicity, and (4) whether the offender had a prior arrest history. The information described in this section is based on the characteristics of murder offenders only in cases that have been cleared. Therefore, the information does not include characteristics of suspected murder offenders. Figure 20 shows the number of murder offenders from 1991 to 2011, as of January 6, 2012 (the date on which data for this report was extracted). Totals will change as more cases are cleared.

**FIGURE 20: NUMBER OF MURDER OFFENDERS,
1991 TO 2011**

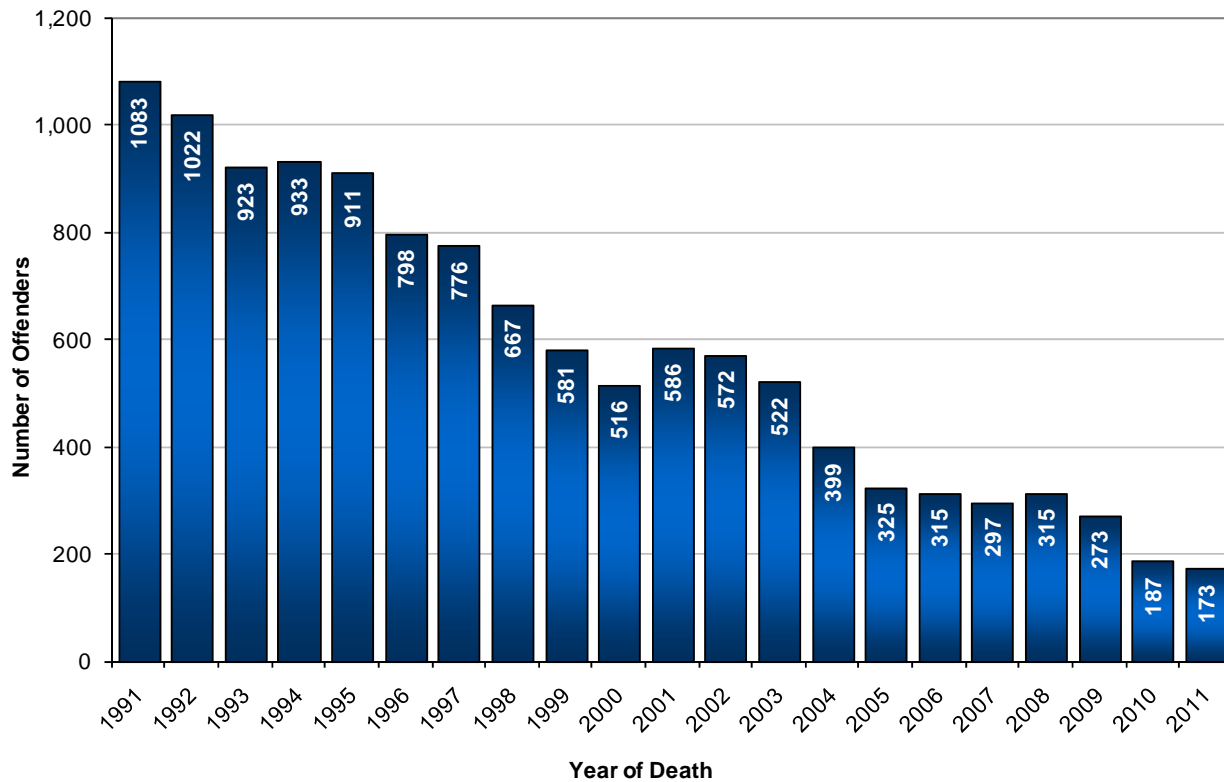


Figure 21 shows the percentage of murder victims who were murdered by one offender, two offenders, or three or more offenders. As Figure 21 indicates, the majority of murders were committed by one offender.

FIGURE 21: MURDER VICTIMIZATION BY NUMBER OF OFFENDERS, 2011

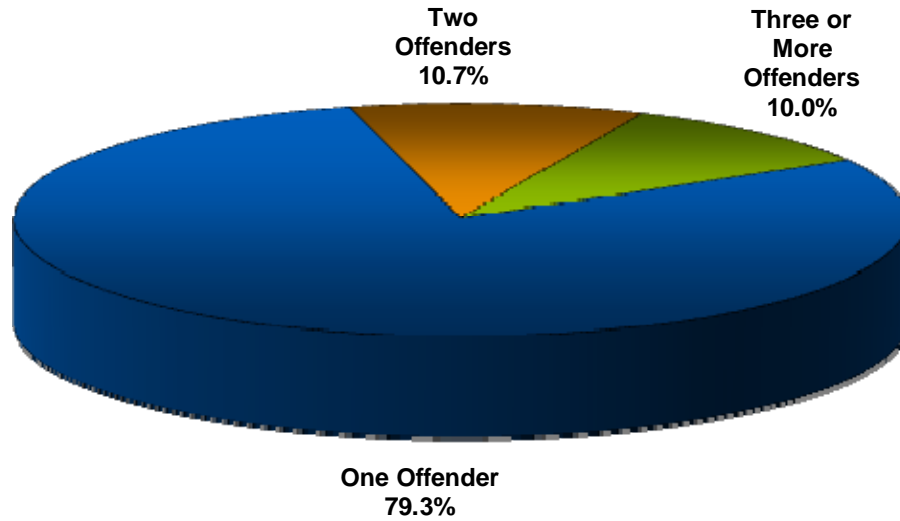
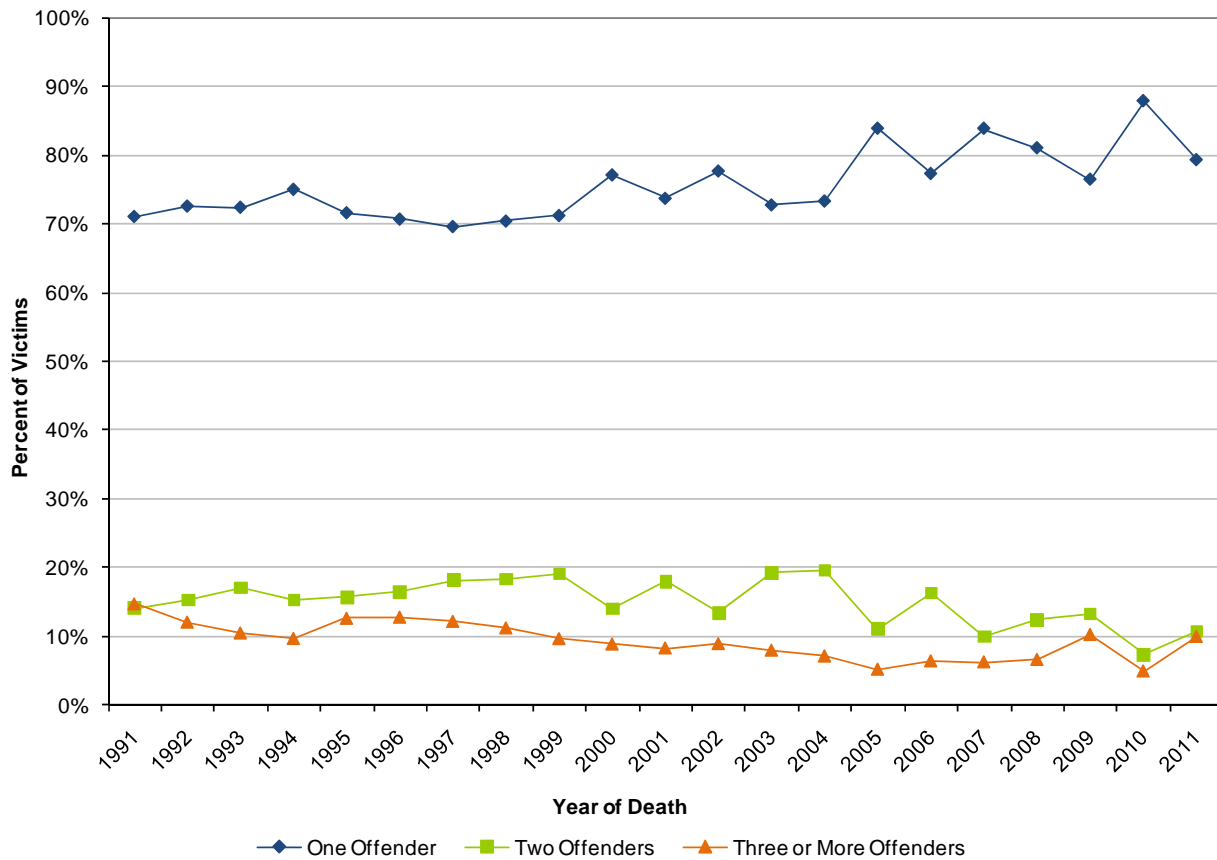


Figure 22 shows trends in murder victimization by number of offenders. Table 20 shows corresponding totals. The trend shows that the percentage of single offender murders has increased slightly since 2000.

FIGURE 22: PERCENTAGE OF MURDER VICTIMS BY NUMBER OF OFFENDERS, 1991 TO 2011



**TABLE 20: MURDER VICTIMS BY NUMBER OF OFFENDERS,
TOTALS - 1991 TO 2011**

Year	One Offender	Two Offenders	Three or More Offenders
1991	499	99	104
1992	503	106	84
1993	462	109	67
1994	495	101	64
1995	429	94	76
1996	374	87	68
1997	353	92	62
1998	319	83	51
1999	287	77	39
2000	296	54	34
2001	311	76	35
2002	330	57	38
2003	283	75	31
2004	217	58	21
2005	228	30	14
2006	194	41	16
2007	202	24	15
2008	209	32	17
2009	156	27	21
2010	144	12	8
2011	111	15	14



In 2011, the age of murder offenders at date of clearance ranged from 14 to 69 years old. The average age was 27 years old. The most frequent ages were 17 and 18 years old. Figure 23 shows offender ages for 2011 murders.

FIGURE 23: NUMBER OF MURDER OFFENDERS BY AGE, 2011

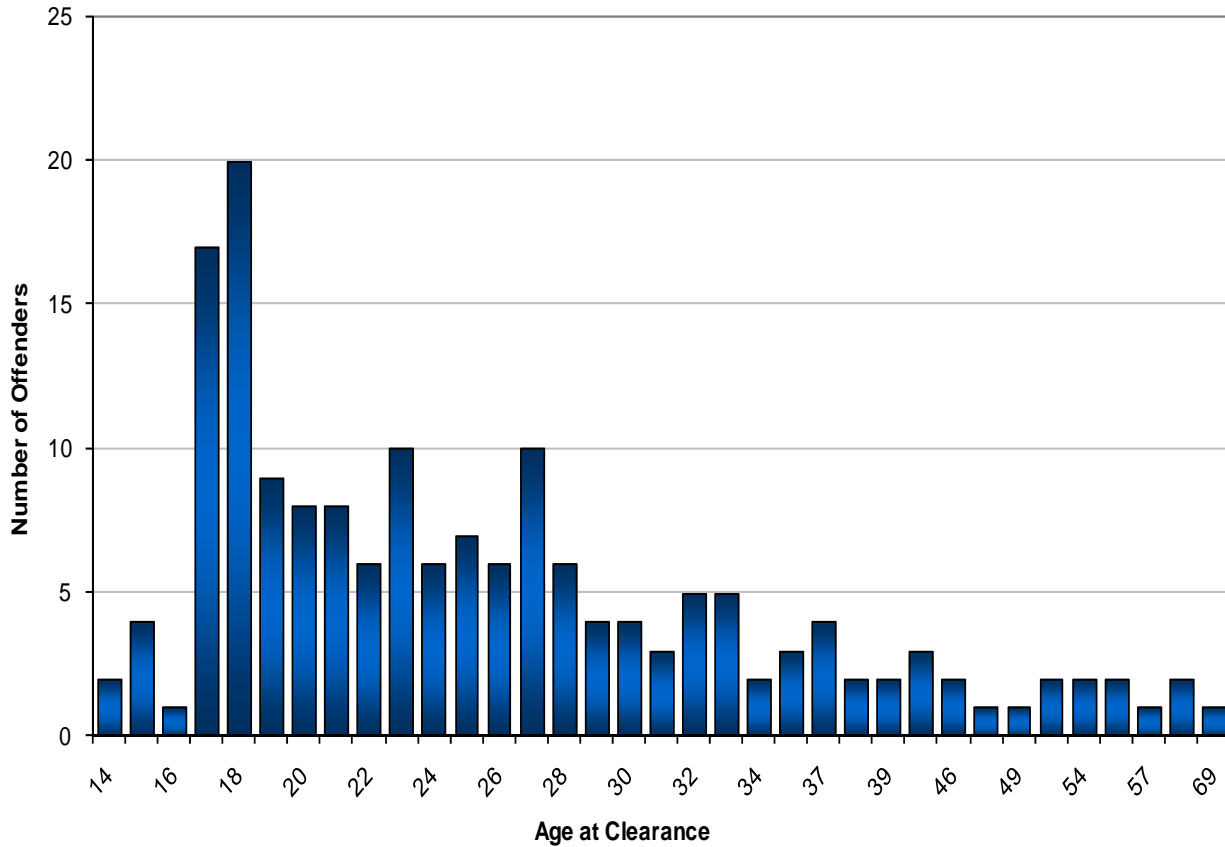
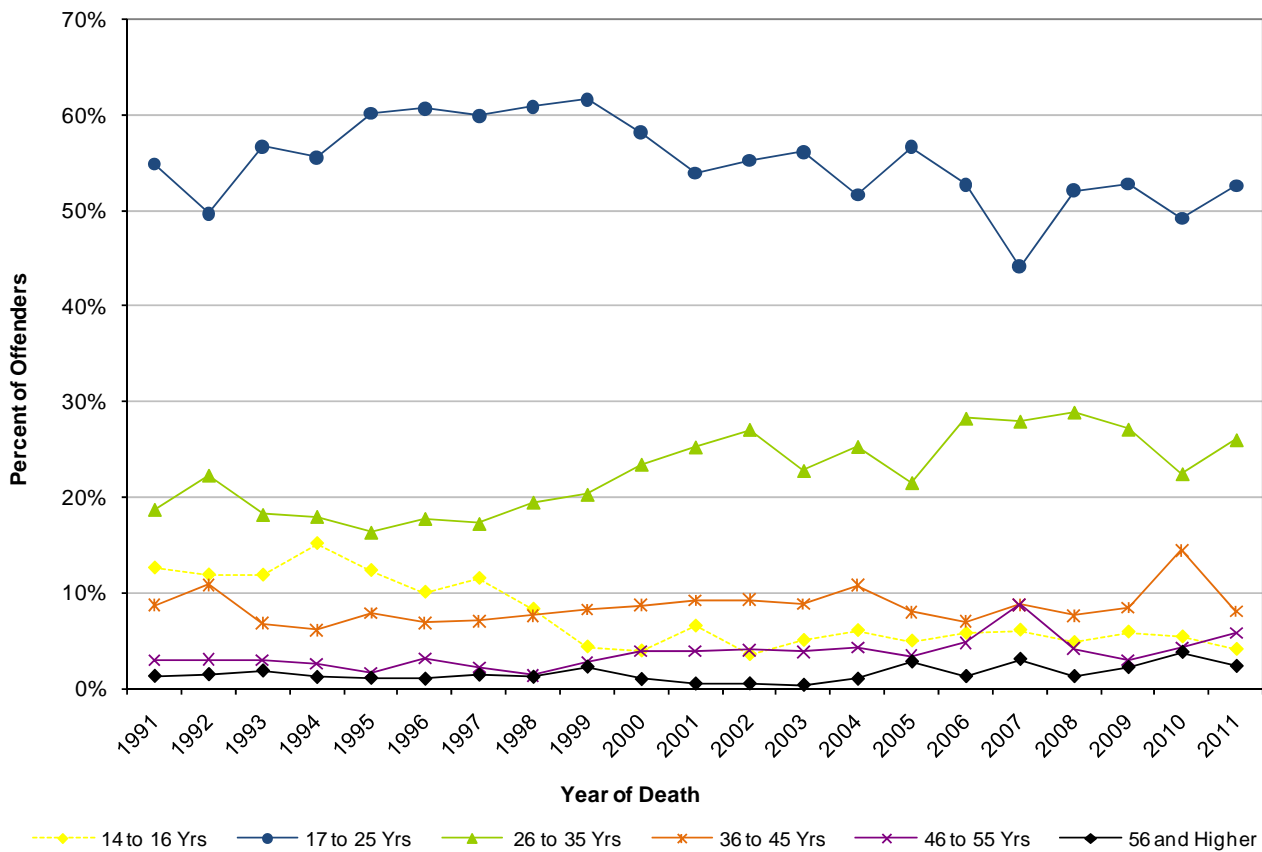


Figure 24 shows the percentage of murder offenders by age group from 1991 to 2011. Table 21 shows corresponding totals. Offenders between the ages 17 and 25 years accounted for the largest percentage of murder offenders during the time period examined. Also, there was an upward trend in the percentage of murders accounted for by offenders between the ages of 26 and 35 years.

FIGURE 24: PERCENTAGE OF MURDER OFFENDERS BY AGE GROUP, 1991 TO 2011



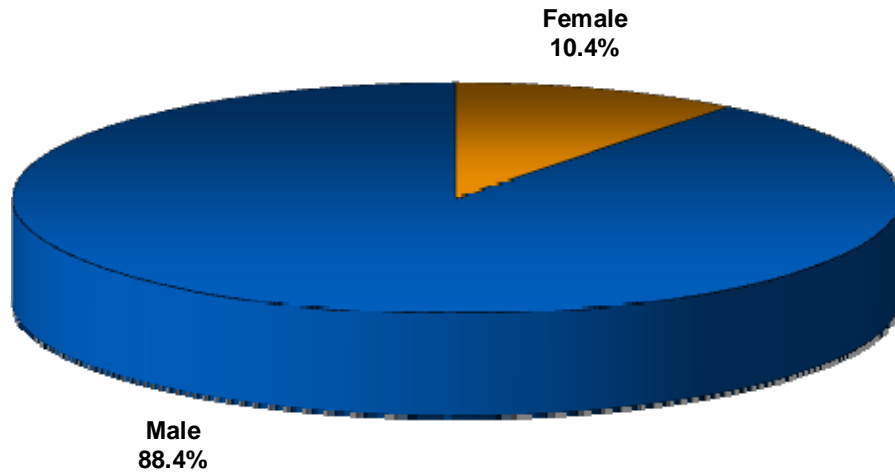
**TABLE 21: MURDER OFFENDERS BY AGE GROUP,
TOTALS - 1991 TO 2011 ***

Year	Under 10 Yrs	10 to 13 Yrs	14 to 16 Yrs	17 to 25 Yrs	26 to 35 Yrs	36 to 45 Yrs	46 to 55 Yrs	56 and Older	Total
1991	0	9	136	594	203	94	32	14	1,083
1992	0	7	121	508	228	111	31	15	1,022
1993	0	15	109	523	168	63	27	17	923
1994	0	14	141	518	168	57	24	11	933
1995	0	4	112	548	149	72	15	10	911
1996	0	4	80	484	142	55	25	8	798
1997	0	4	89	465	134	55	17	11	776
1998	1	5	55	406	130	51	9	8	667
1999	0	3	25	358	118	48	16	13	581
2000	0	2	20	300	121	45	20	5	516
2001	0	0	38	316	148	54	23	3	586
2002	0	1	20	316	155	53	23	3	572
2003	0	2	26	293	119	46	20	2	522
2004	0	0	24	206	101	43	17	4	399
2005	0	1	16	184	70	26	11	9	325
2006	0	0	18	166	89	22	15	4	315
2007	0	1	18	131	83	26	26	9	297
2008	0	0	15	164	91	24	13	4	315
2009	0	0	16	144	74	23	8	6	273
2010	0	0	10	92	42	27	8	7	187
2011	0	0	7	91	45	14	10	4	173

* For a small number of murders, offender age was missing. As a result, for some years, the sum of the age group totals does not match the annual Total column.

Figure 25 shows the percentage of murder offenders by sex for 2011. As shown, most murder offenders were male.

FIGURE 25: PERCENTAGE OF MURDER OFFENDERS BY SEX, 2011 *

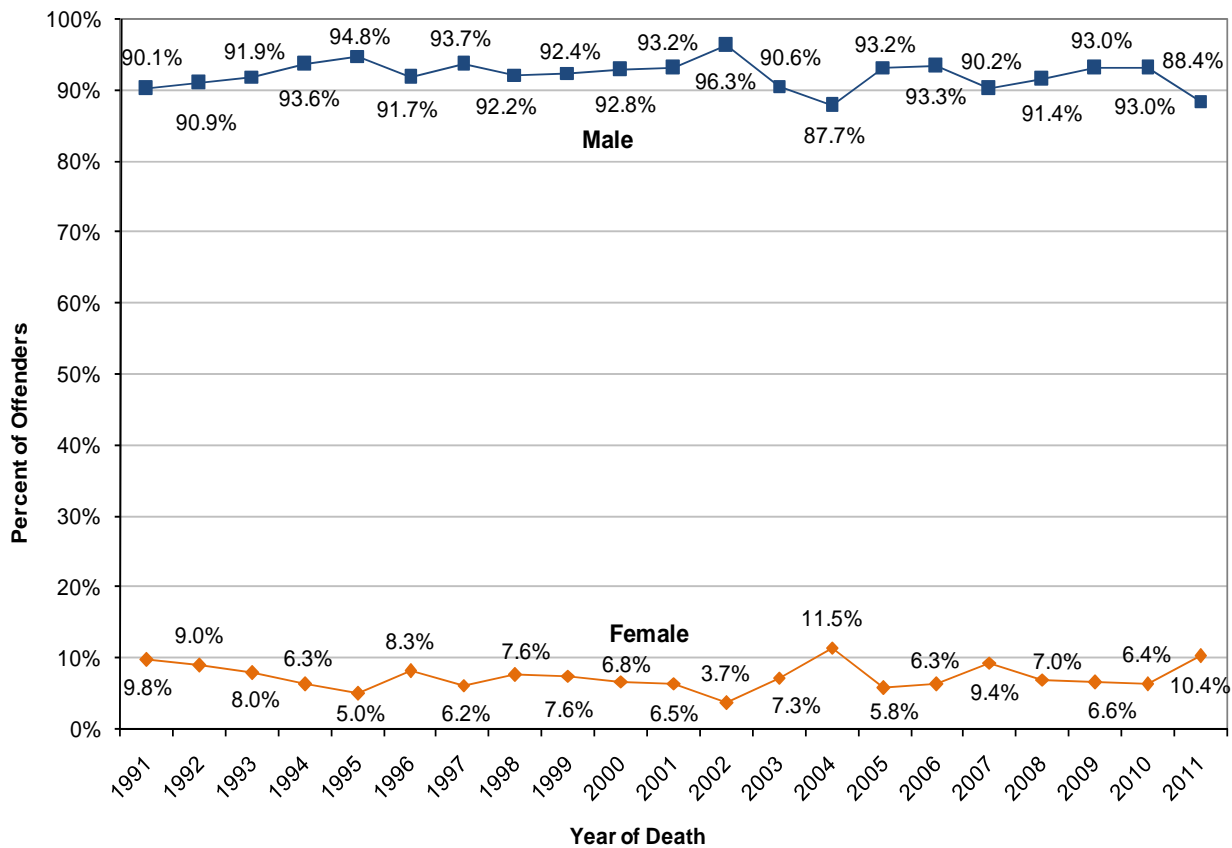


* Excludes two offenders for whom sex information was unavailable.



Figure 26 shows the percentage of murder offenders by sex from 1991 to 2011. Table 22 provides the underlying data. As indicated by both the figure and table, males have consistently accounted for the majority of murder offenders throughout the time period examined.

FIGURE 26: PERCENTAGE OF MURDER OFFENDERS BY SEX, 1991 TO 2011



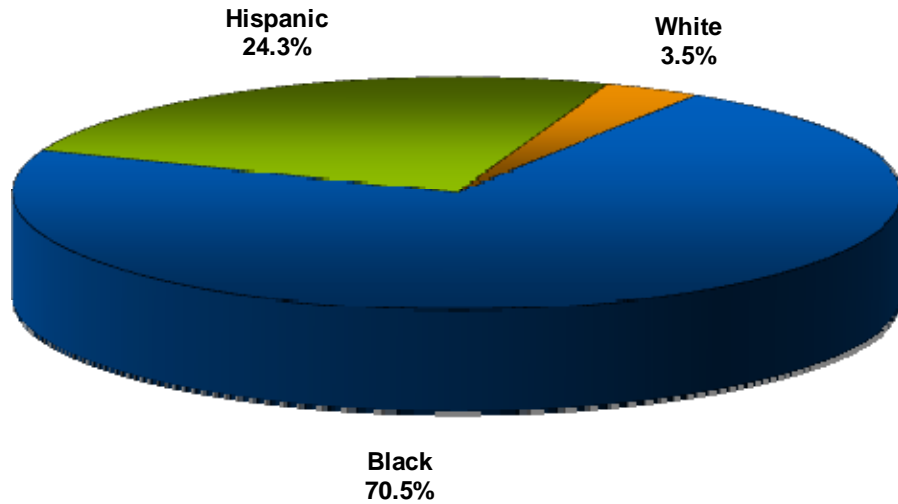
**TABLE 22: MURDER OFFENDERS BY SEX,
TOTALS - 1991 TO 2011***

Year	Female	Male	Total
1991	106	976	1,083
1992	92	929	1,022
1993	74	848	923
1994	59	873	933
1995	46	864	911
1996	66	732	798
1997	48	727	776
1998	51	615	667
1999	44	537	581
2000	35	479	516
2001	38	546	586
2002	21	551	572
2003	38	473	522
2004	46	350	399
2005	19	303	325
2006	20	294	315
2007	28	268	297
2008	22	288	315
2009	18	254	273
2010	12	174	187
2011	18	153	173

* For a small number of murders, offender sex was missing. As a result, for some years, the sum of the offender sex totals does not match the annual Total column.

Figure 27 shows the percentage of murder offenders by race/ethnicity for 2011. The majority of murder offenders were Black, followed by Hispanic.

FIGURE 27: PERCENTAGE OF MURDER OFFENDERS BY RACIAL/ETHNIC GROUP, 2011 *

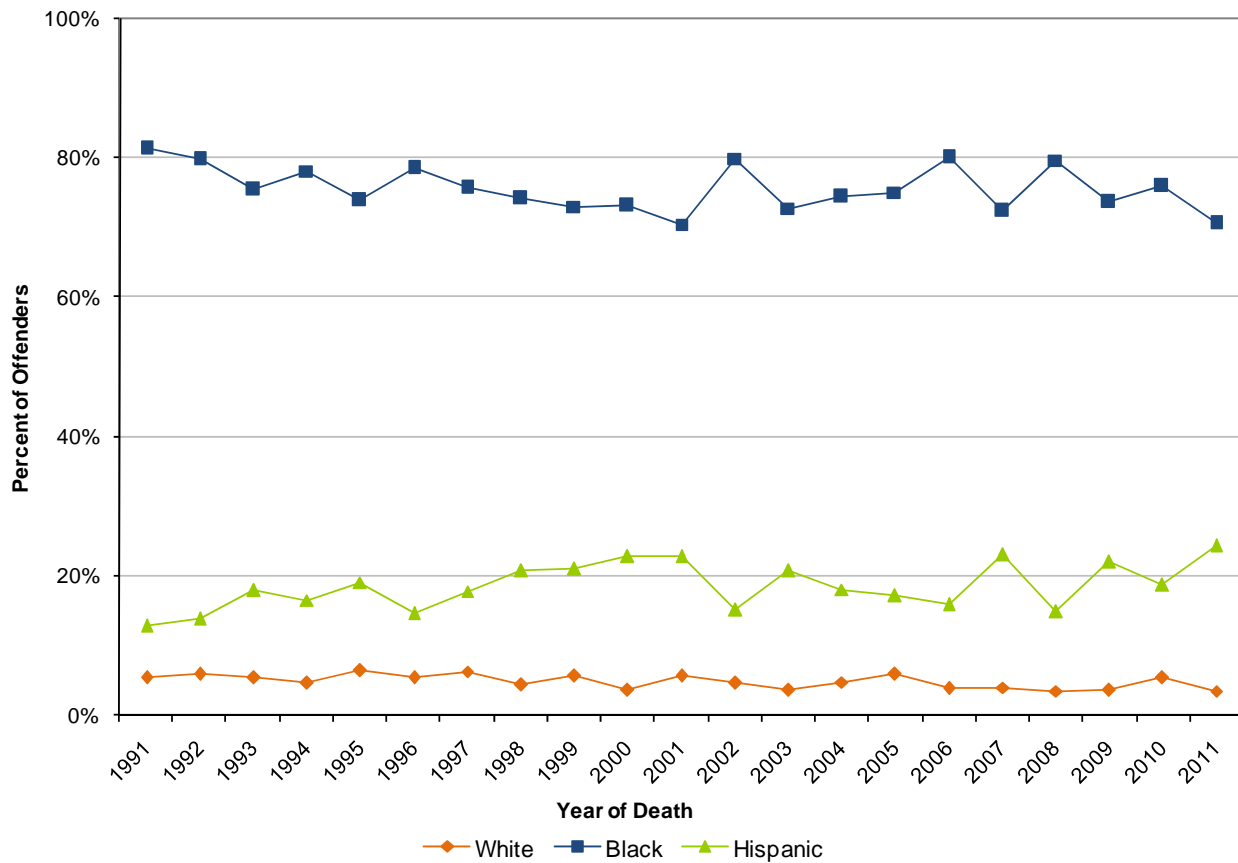


* Excludes one American Indian/Alaska Native offender, and two offenders for whom racial/ethnic information was unavailable.



Figure 28 shows trends in the percentage of murder offenders by race/ethnicity. Table 23 shows corresponding totals. The percentages have remained relatively stable over time for White offenders, but have decreased slightly for Black offenders and increased slightly for Hispanic offenders.

FIGURE 28: PERCENTAGE OF MURDER OFFENDERS BY RACE/ETHNICITY, 1991 TO 2011



**TABLE 23: MURDER OFFENDERS BY RACE/ETHNICITY,
TOTALS - 1991 TO 2011 ***

Year	White	Black	Hispanic	Other	Total
1991	58	880	139	5	1,083
1992	61	815	141	4	1,022
1993	50	697	166	9	923
1994	44	729	154	6	933
1995	58	674	174	4	911
1996	43	627	117	9	798
1997	49	587	138	1	776
1998	29	495	138	4	667
1999	33	424	122	2	581
2000	19	377	118	0	516
2001	33	413	134	3	586
2002	27	457	87	0	572
2003	19	380	108	4	522
2004	19	297	72	2	399
2005	19	244	56	0	325
2006	12	252	50	0	315
2007	12	214	68	1	297
2008	11	251	47	2	315
2009	10	201	60	1	273
2010	10	142	35	0	187
2011	6	122	42	1	173

* For a small number of murders, offender race/ethnicity was missing. As a result, for some years, the sum of the offender race/ethnicity totals does not match the annual Total column.

Figure 29 shows the percentage of 2011 murder offenders who had a prior arrest history with the Chicago Police Department. As illustrated, 87.3% of murder offenders had a prior arrest history.

FIGURE 29: PERCENTAGE OF MURDER OFFENDERS WITH A PRIOR ARREST HISTORY, 2011

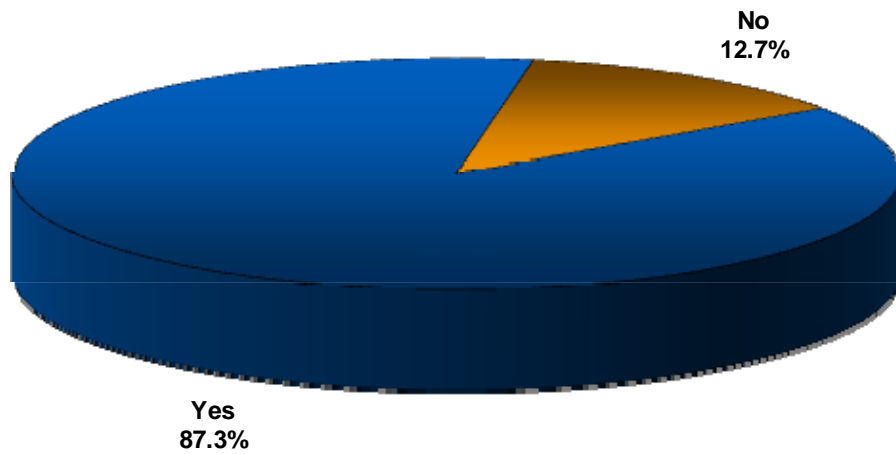
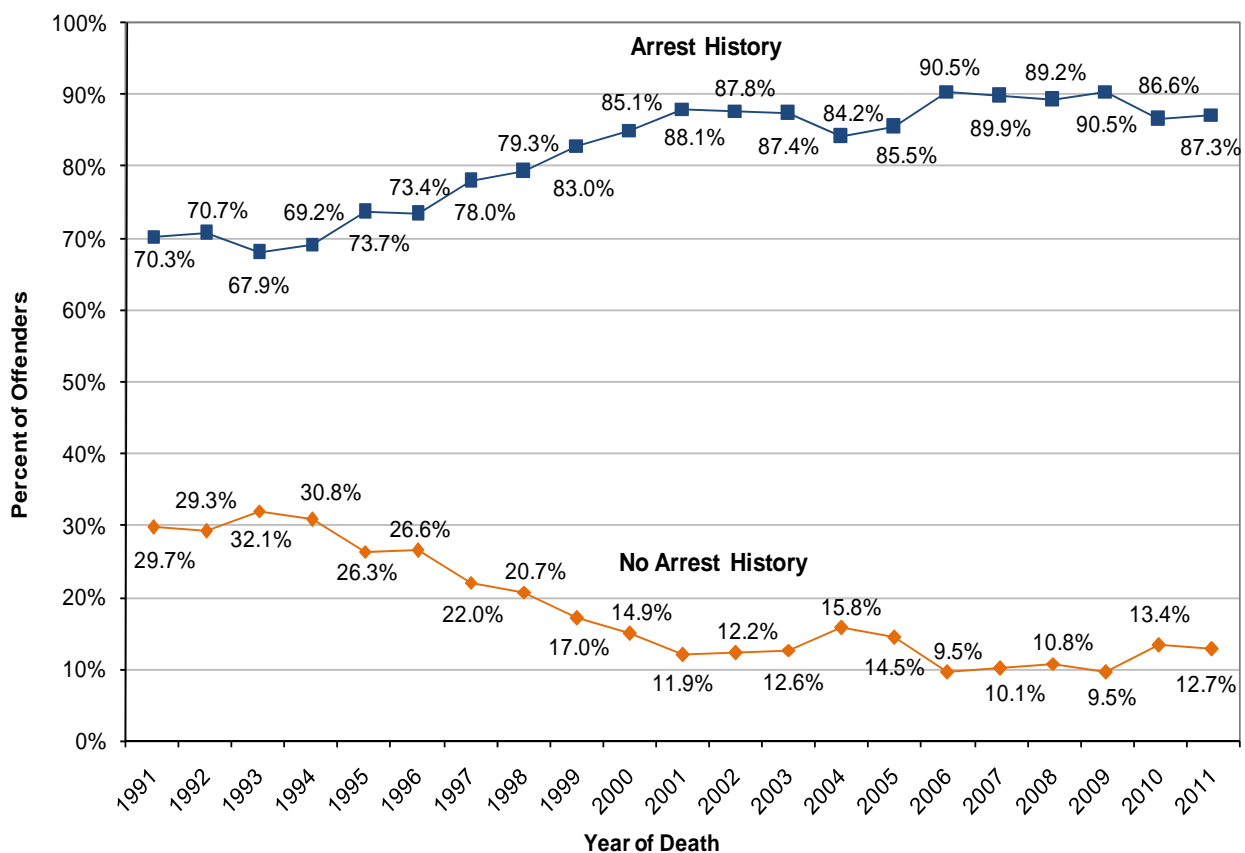


Figure 30 shows the percentage of murder offenders who had a prior arrest history from 1991 to 2011. Table 24 provides the underlying data. As shown in Figure 30, the percentage of murder offenders with a prior arrest history has increased, overall, from 1991 to 2011. Similar to the prior arrest history data for victims, this increase may be a partial byproduct of improvements to the Chicago Police Department information system.

FIGURE 30: PERCENTAGE OF MURDER OFFENDERS WITH A PRIOR ARREST HISTORY, 1991 - 2011



**TABLE 24: MURDER OFFENDERS WITH A PRIOR ARREST HISTORY,
TOTALS - 1991 TO 2011**

Year	No	Yes	Total
1991	322	761	1,083
1992	299	723	1,022
1993	296	627	923
1994	287	646	933
1995	240	671	911
1996	212	586	798
1997	171	605	776
1998	138	529	667
1999	99	482	581
2000	77	439	516
2001	70	516	586
2002	70	502	572
2003	66	456	522
2004	63	336	399
2005	47	278	325
2006	30	285	315
2007	31	266	297
2008	34	281	315
2009	26	247	273
2010	25	162	187
2011	22	151	173