

Installation Guide for Oracle® 11g – Express Edition (APEX)

Step 0: Register an Oracle account at www.Oracle.com

APEX Installation

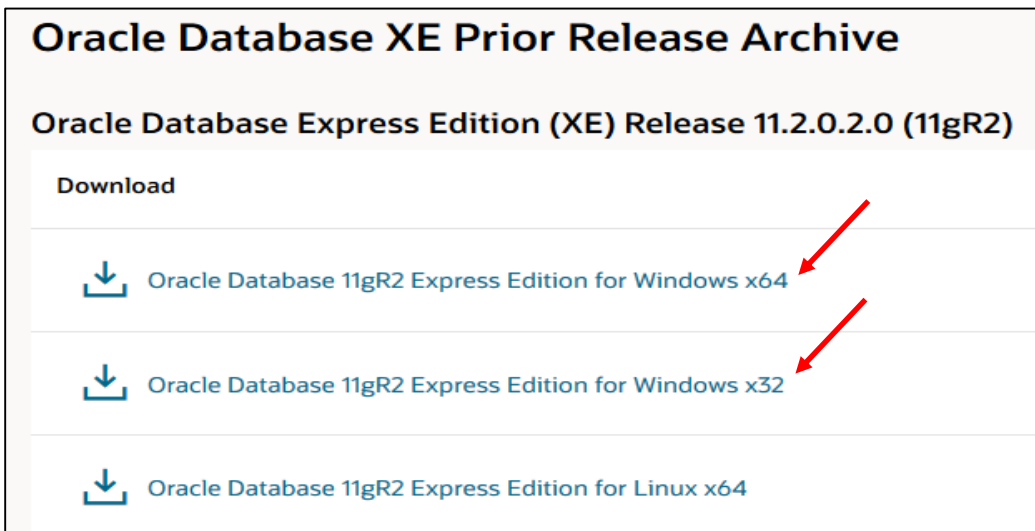
Click the following link to access the software (if unavailable, please search from oracle.com)

<https://www.oracle.com/database/technologies/oracle-database-software-downloads.html>

then, scroll down until you see the following, then select “ ... Windows 64)”. (do not select 18C as 11g Release 2 is easier to install and also with all features).

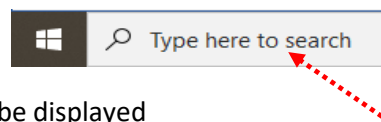


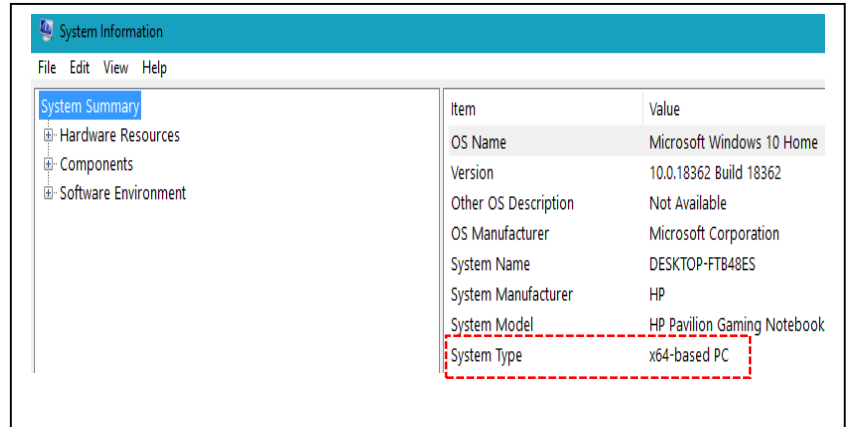
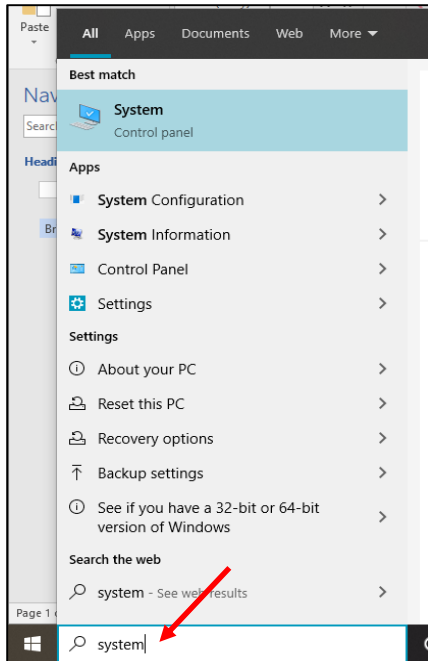
Select either x64 (64-bits) or x32 (32-bits) depending on your computer. How to check the type of your computer is x64 or x32?



How to check:

- 1) Type: system on the “Windows” Search
- 2) select “System Information”
- 3) either “x-64 based PC” or “x-32-based PC” will be displayed





You may need to create an Oracle.com account if you have not done; otherwise, simply just sign in and “Accept License Agreement”.

Overview Downloads Documentation Community Learn More

Oracle Database Express Edition 11g Release 2

June 4, 2014

You must accept the OTN License Agreement for Oracle Database Express Edition 11g Release 2 to download this software.

Accept License Agreement Decline License Agreement

- ↓ Oracle Database Express Edition 11g Release 2 for Windows x64
- Unzip the download and run the DISK1/setup.exe
- ↓ Oracle Database Express Edition 11g Release 2 for Windows x32
- Unzip the download and run the DISK1/setup.exe
- ↓ Oracle Database Express Edition 11g Release 2 for Linux x64
-Unzip the download and the RPM file can be installed as normal

1. Click on "Accept Licence Agreement"
2. Download the correct version for your Windows

Sign In

Username

[Forgot Username?](#)

Password

[Forgot Password?](#)

Invalid login

Sign In

[Need Help?](#)

1. Put your Username and Password

2. Click "Sign In"

Don't have an Oracle Account?
A free Oracle Account gives you access to Oracle online applications and services, support, events, communities, and more.

Create Account

Save As

Downloads

Name	Date modified	Type	Size
OracleXE112_Win64	9/19/2014 3:53 PM	Compressed (zipp...	324,145 KB

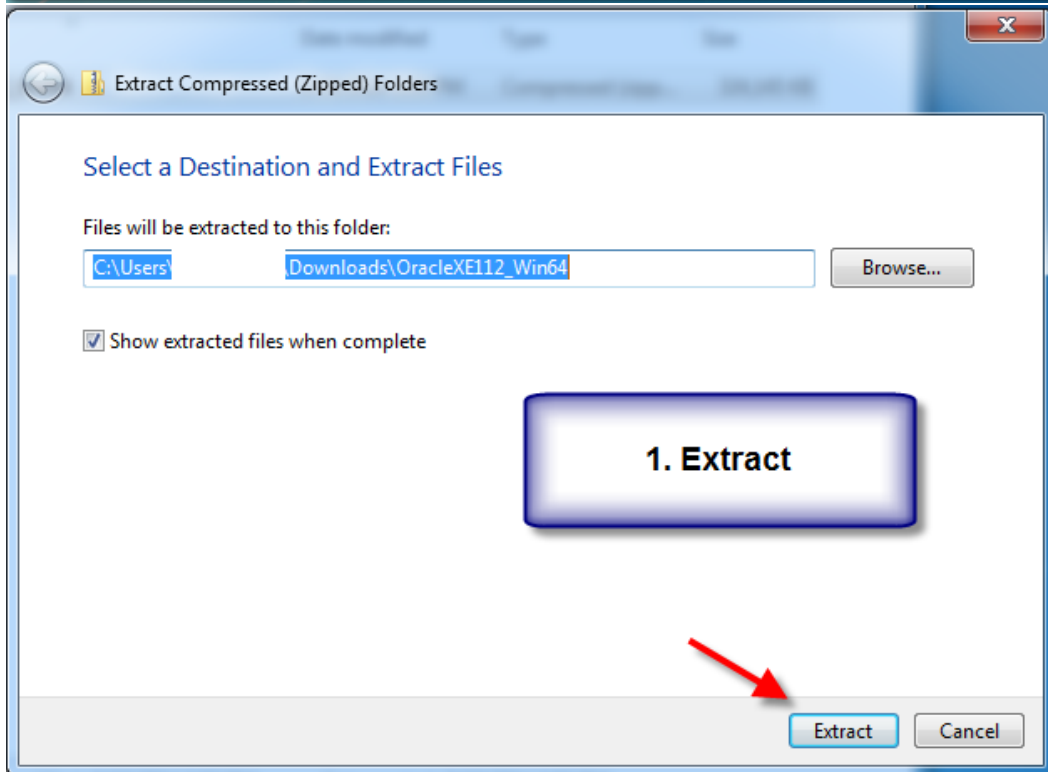
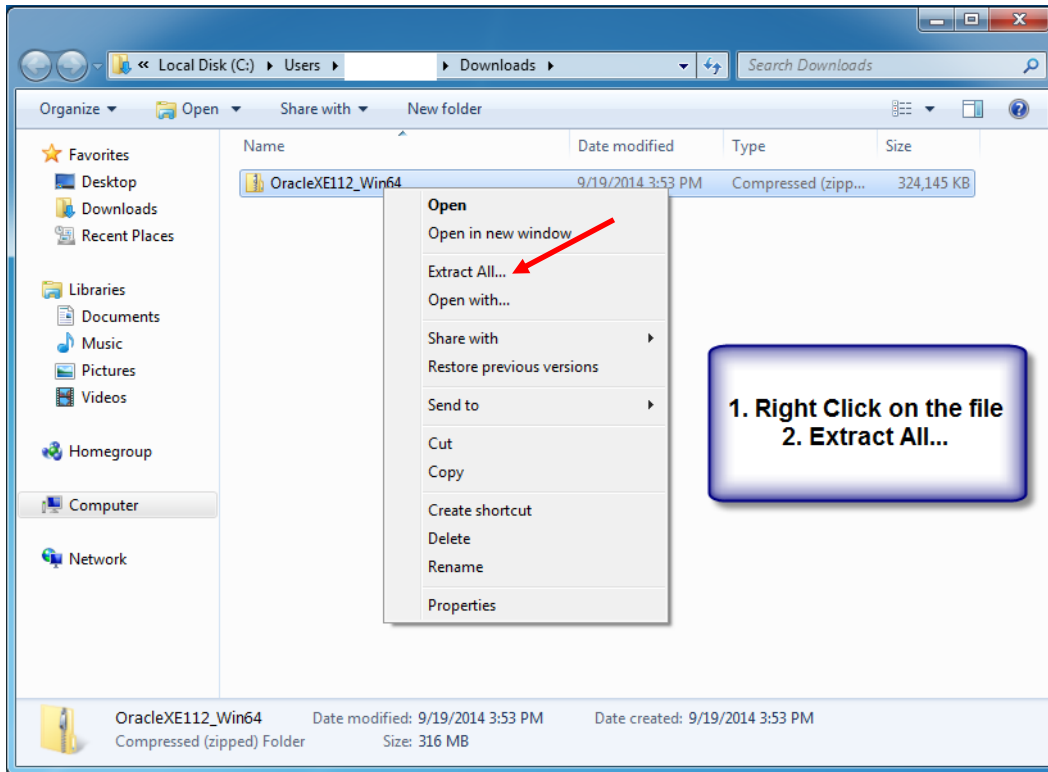
1. Save the file

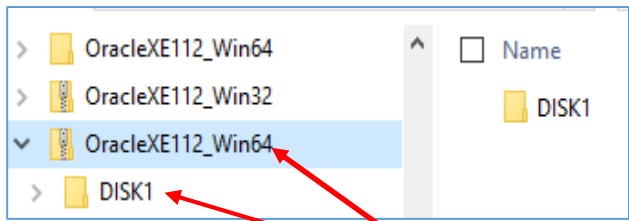
File name: OracleXE112_Win64

Save as type: Compressed (zipped) Folder

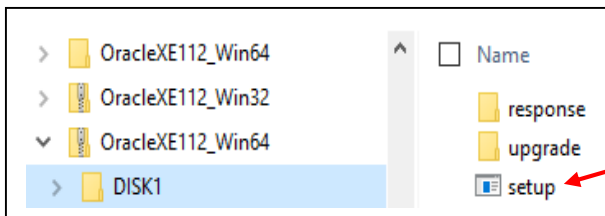
Save **Cancel**

Install the “downloaded” Express File (Note: make sure to keep your [Internet connected](#))
Right click either “OracleXE112_Win64” or “OracleXE112_Win32”

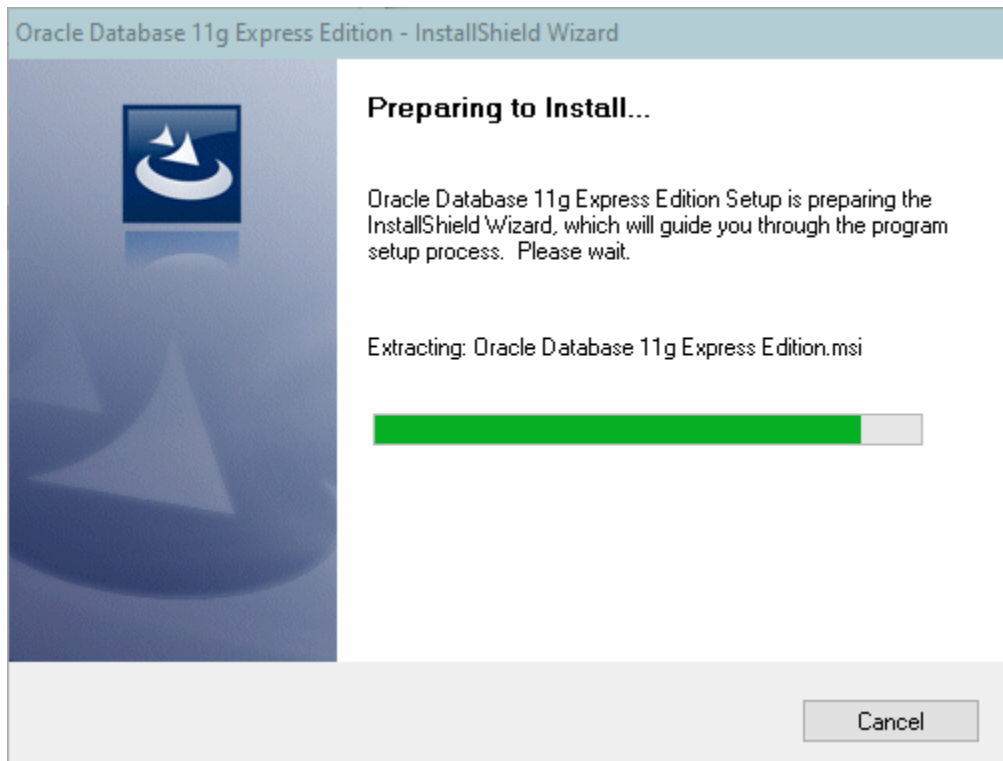


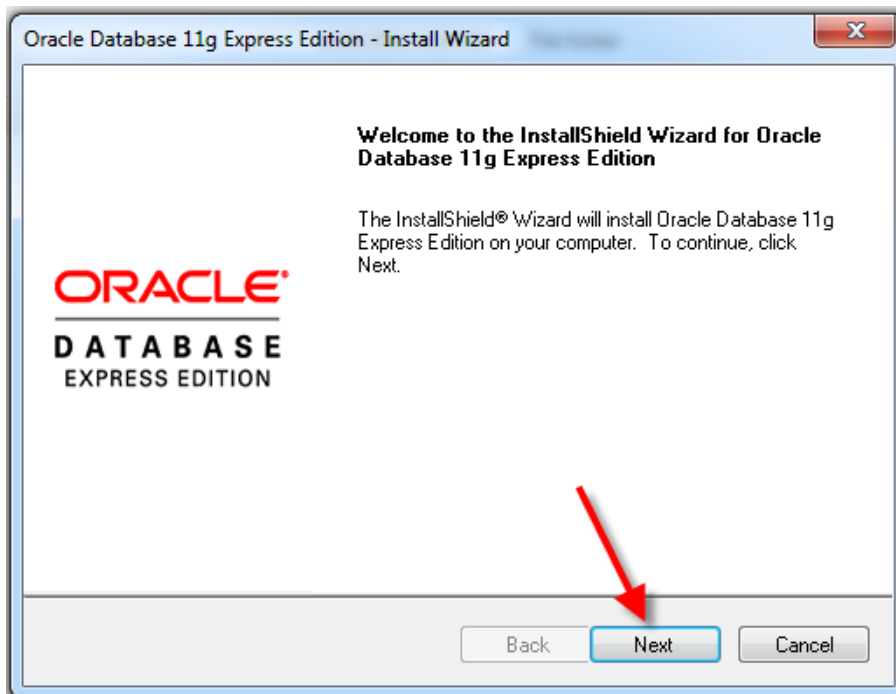


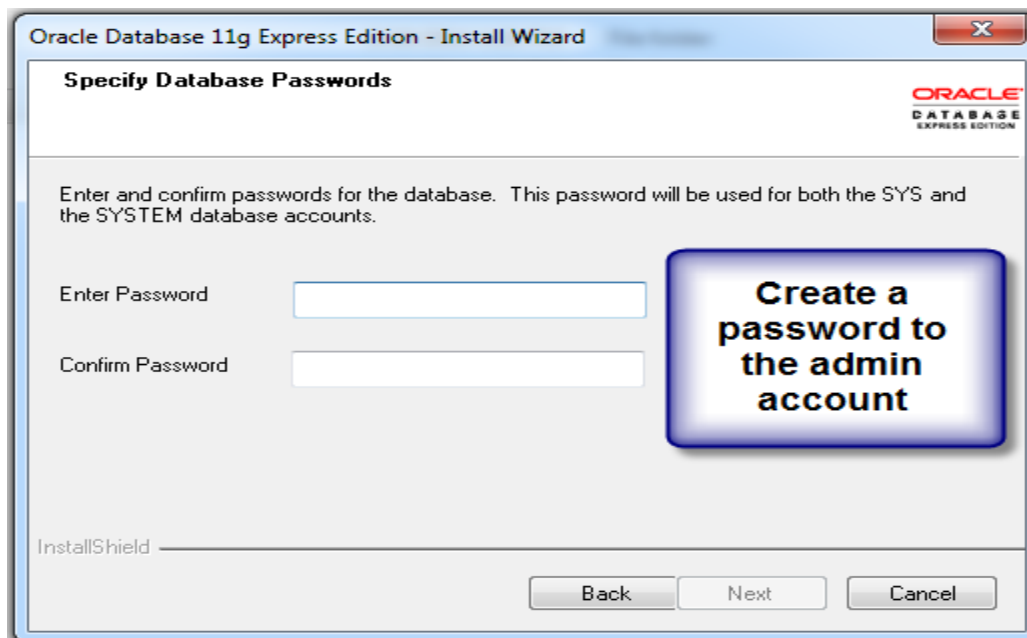
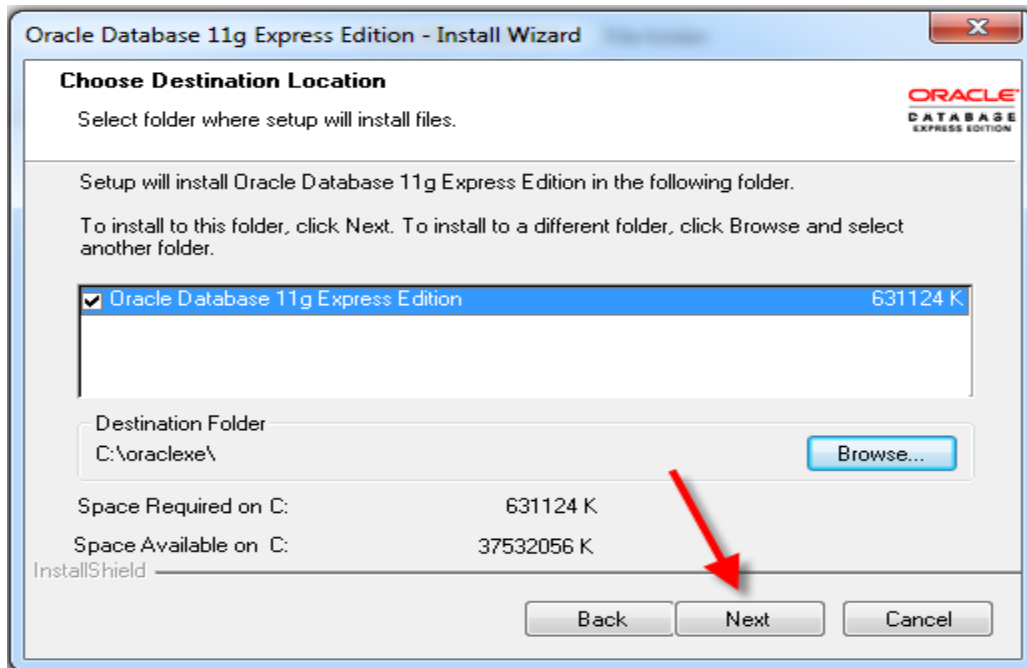
Click Win64 then DISK1



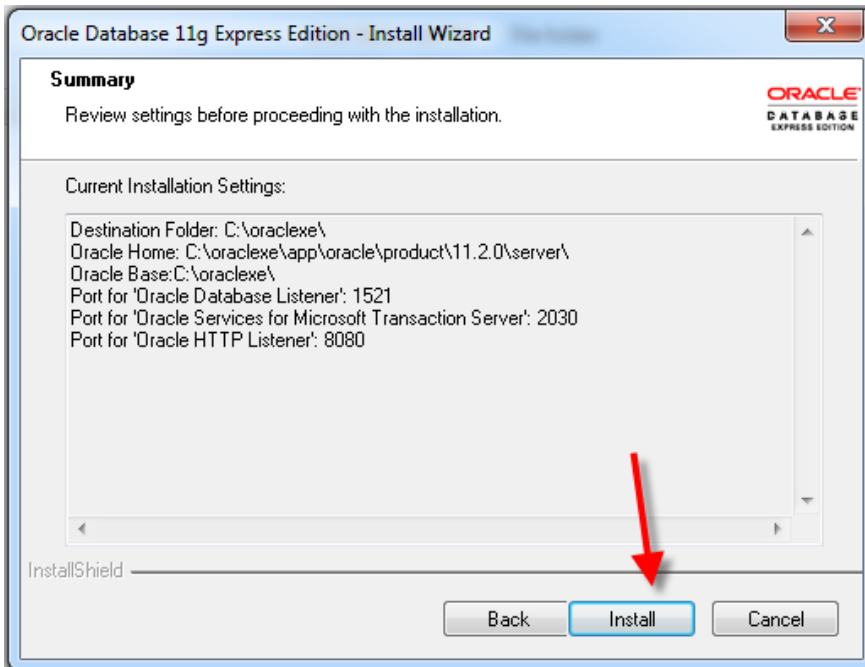
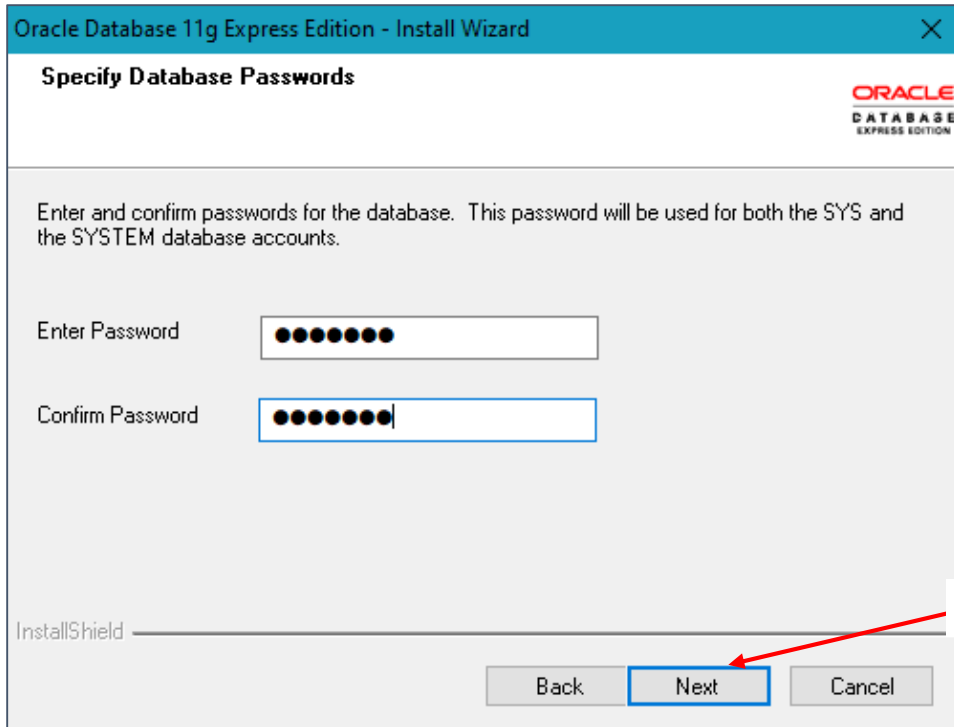
Double Click to install OracleXE

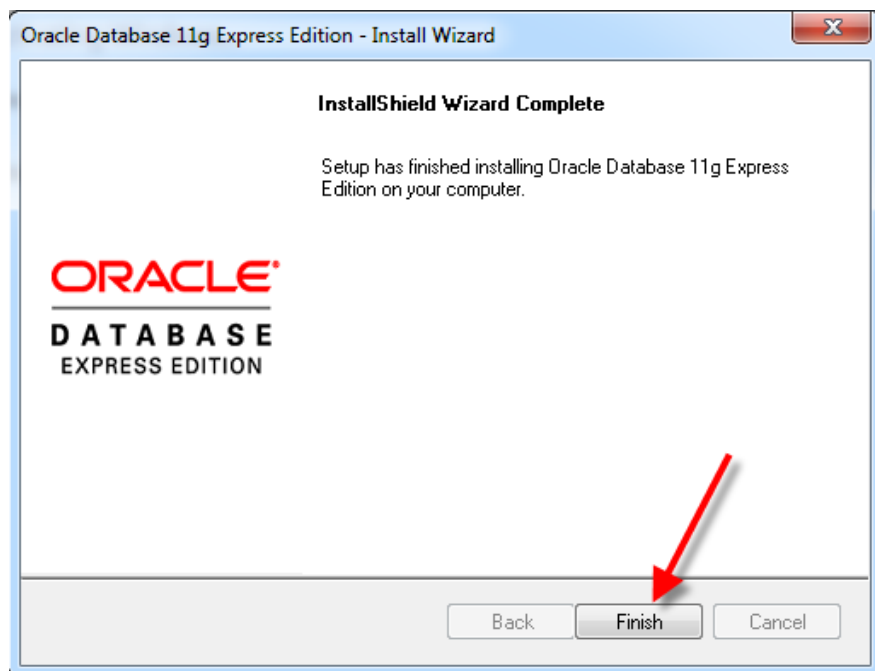
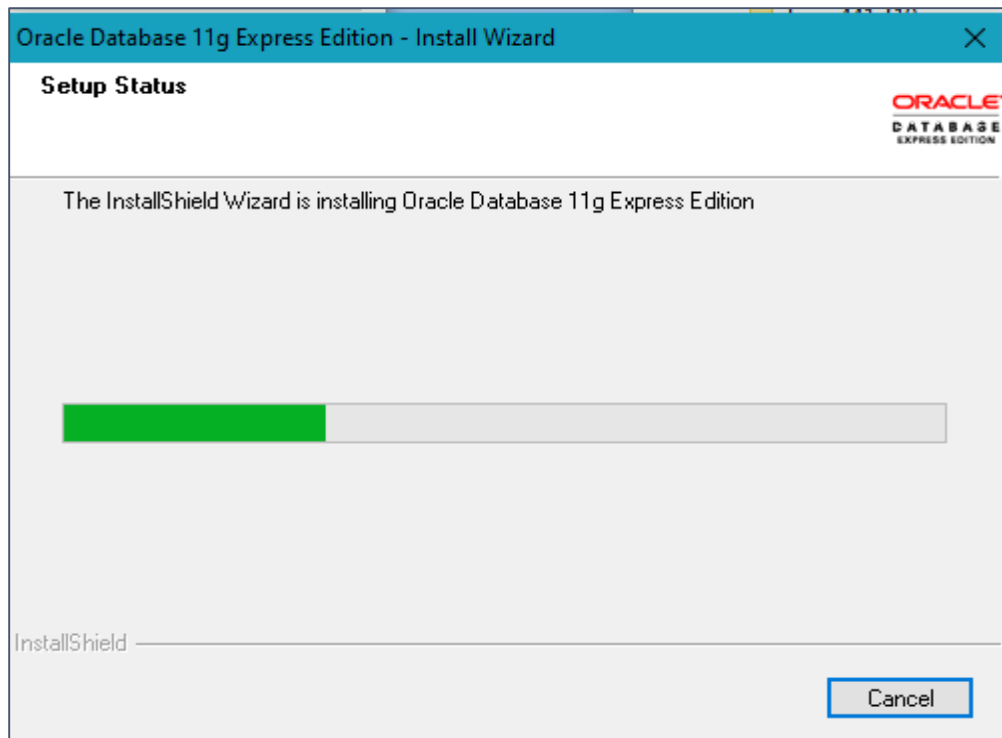


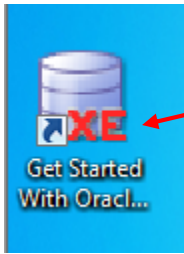




Be sure to write down the password you entered. This is the password for sys/system and also will be used for a new user (like you).

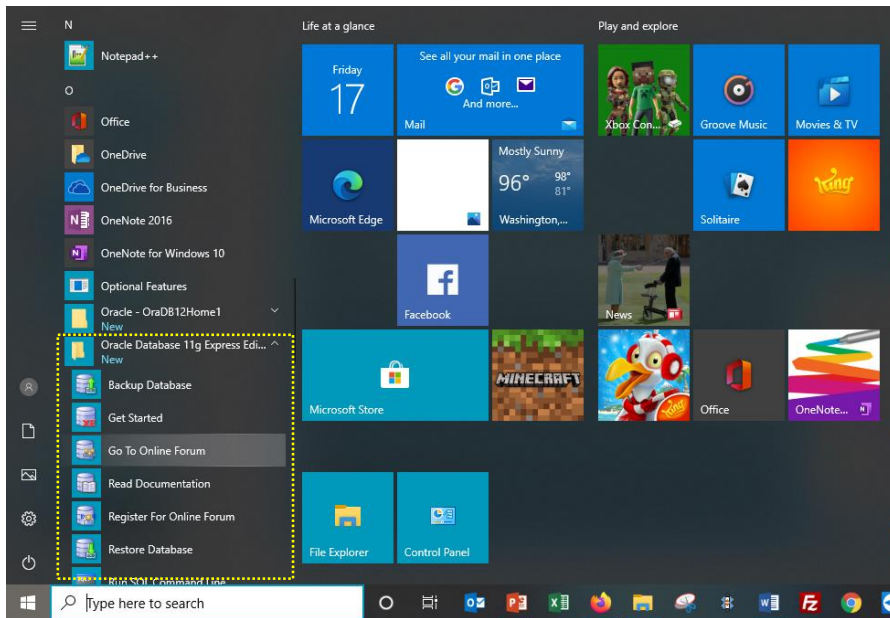




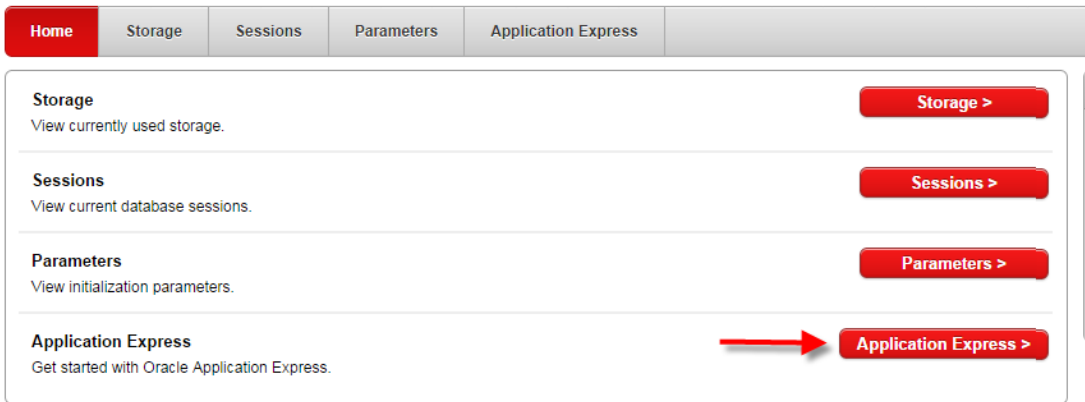


Congratulation! The installation is done.
“XE .. Oracle” is added to your Desktop

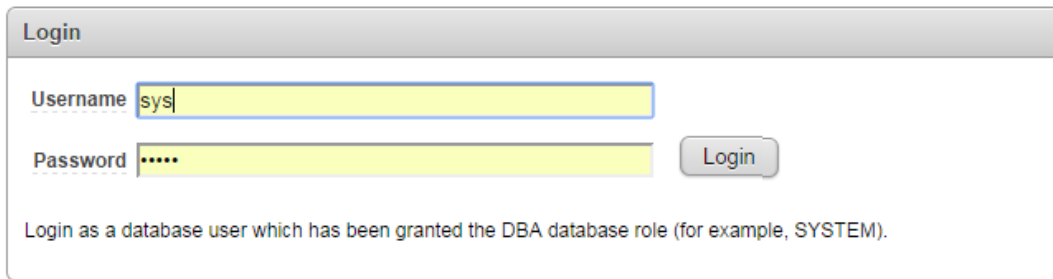
You can verify that the components of Oracle Application Express are added to Start icon.



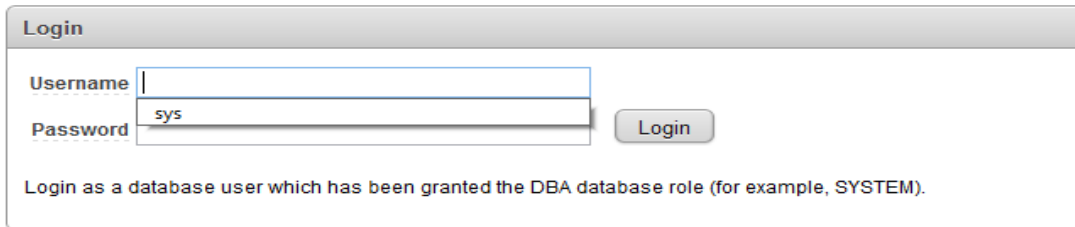
You **must** restart the computer to confirm the Oracle APEX installation with new settings. You then click on the following icon.



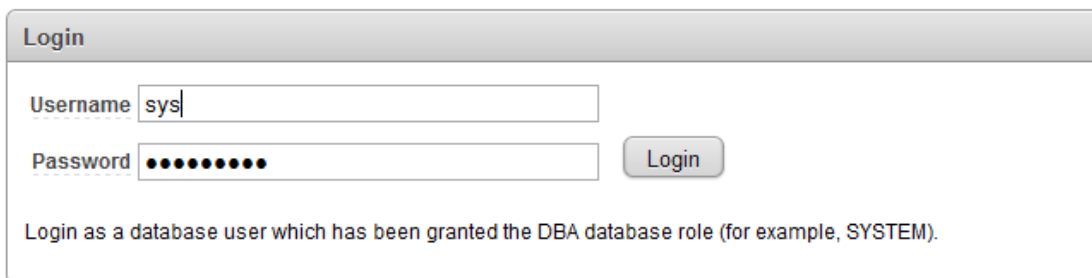
Enter Login information (the information you provided during the installation)



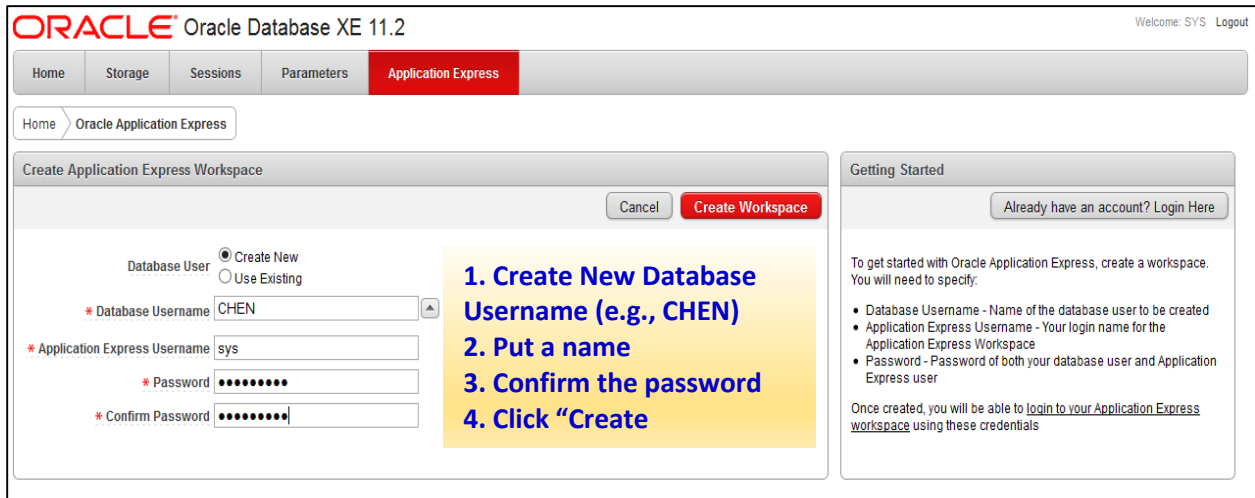
You may “click” on the space and then simply select ‘sys’ the password will be prompted automatically.
(Note, ‘sys’ is Application Express Username such as Database Administer. You can add yourself (e.g., Chen) as a Database Username later).



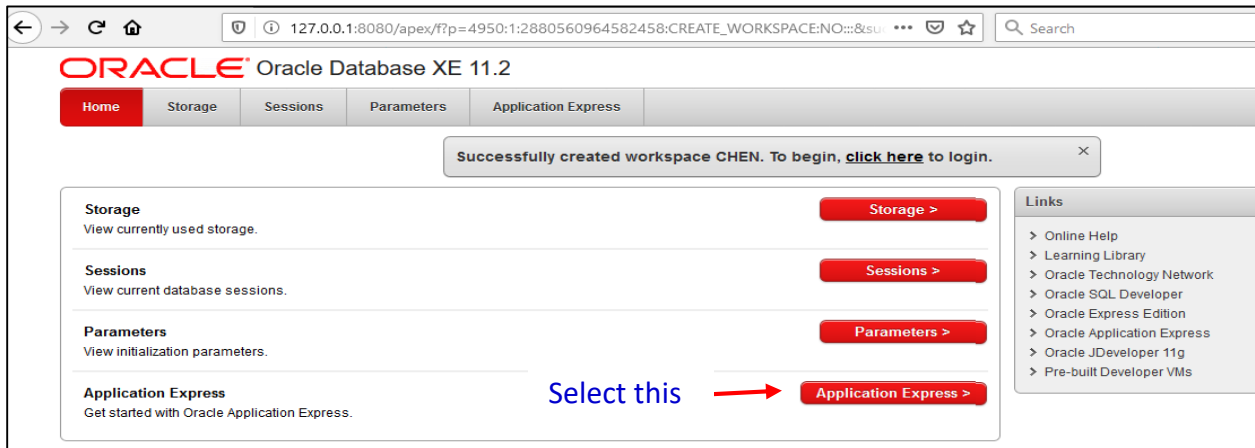
Click on “Login” to confirm login information.



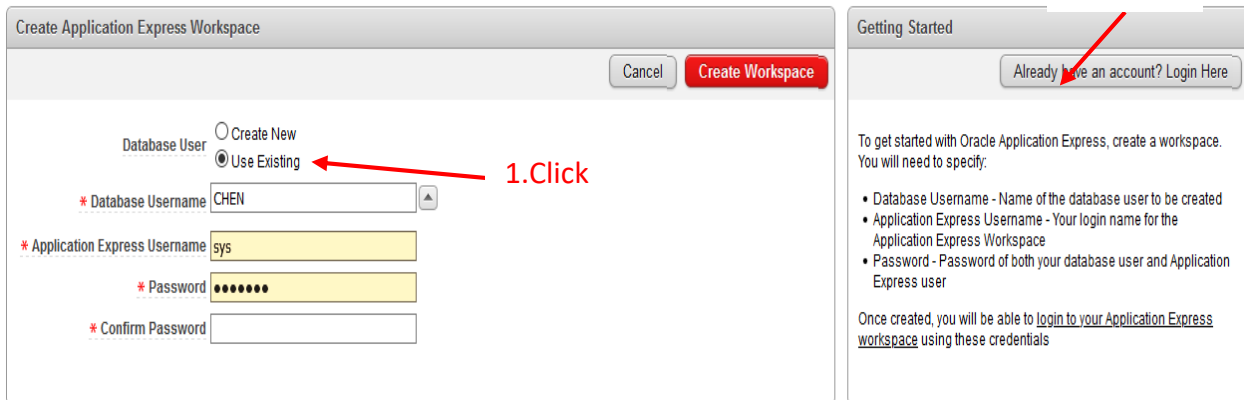
You need to “Create Workspace/a new Database User” the first time by providing a Database Username (e.g., Chen) and repeat the Username and Password to confirm the action. Be sure to write down the information you created/added (note: password will be used for both sys/system and new user-CHEN).



You have created all what you can run Oracle (SQL Plus)



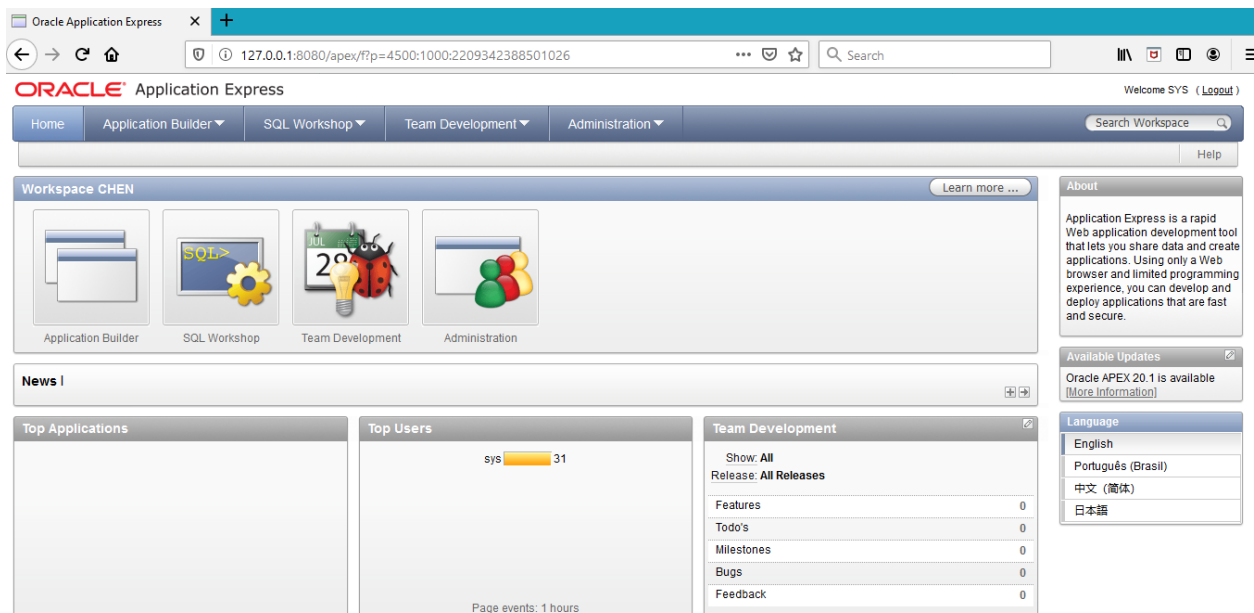
Please note that if the Workspace has been created previously such as “CHEN”, you should select “Use Existing” and enter Login information. You then select “*Already has an account? Login*” 1.



You have successfully created workspace for CHEN (a Database User). Click “Login” to start.



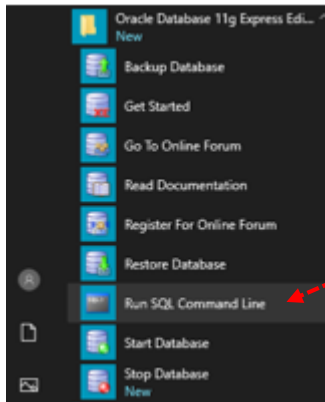
The following is a list of resources for Oracle Application Express Platform. However, we will focus on “SQL PLUS” in this class (to be compatible with the Oracle 12C client/server settings on campus).



SQL PLUS

Steps to start with SQL PLUS

1. Type “Run SQL Command Line” on Windows Search or select “Run SQL Command Line” under Oracle Database11g Express Edition scroll-down



2. “Run SQL Command Line” screen appears with SQL> prompt

```
SQL> Run SQL Command Line

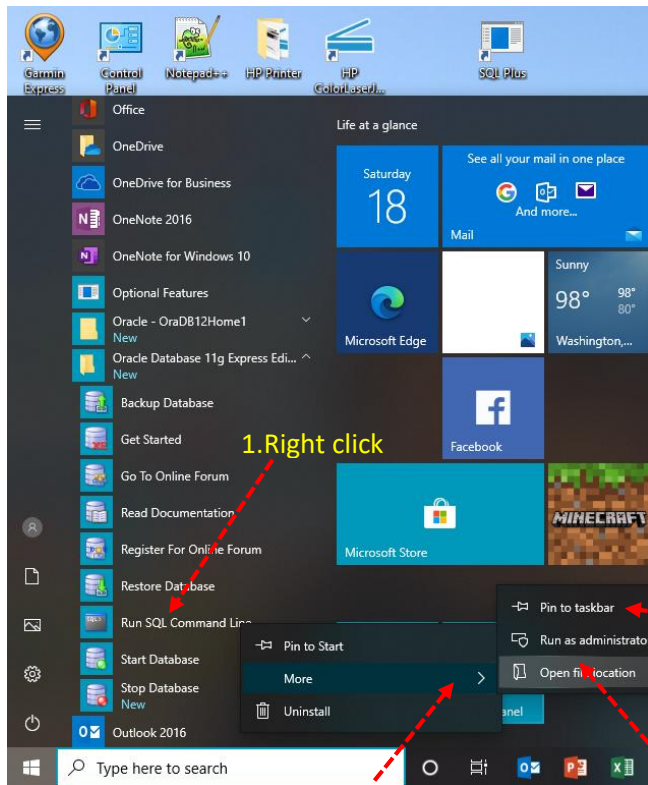
SQL*Plus: Release 11.2.0.2.0 Production on Fri Jul 17 15:38:59 2020
Copyright (c) 1982, 2014, Oracle. All rights reserved.
SQL>
```

3. Continue entering the following to connect to SQL engine (your username and password you created)
Note: Password is not displayed while you are entering it.

```
SQL> Run SQL Command Line

SQL*Plus: Release 11.2.0.2.0 Production on Fri Jul 17 15:38:59 2020
Copyright (c) 1982, 2014, Oracle. All rights reserved.
SQL> connect
Enter user-name: chen
Enter password:
Connected.
SQL>
```

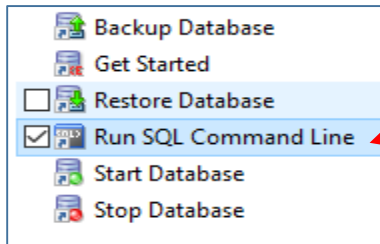
Rather than executing “Run SQL Command Line” every time it would be more convenient if we can create an icon and then simply click it to activate the APX system. See the steps as follows:



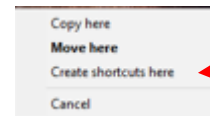
3b. click this, then done

2. Cursor over (do not click)

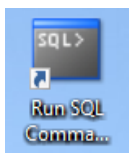
3a. click, then go to 4.



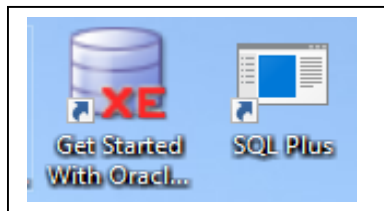
4. Right click and drag to the desktop



5. Click



The SQL icon is created. You now simple click it to run SQL PLUS.



Two icons are created for Oracle Application Express (APX) for you to explore all Oracle features.

*** **Important notice:** Make sure to complete this installation as soon as possible (preferably, sometime during the summer before fall semester starts) so that you can work from home to minimize the concern of coronavirus pandemic this fall. Ultimately, it will improve your learning effectiveness and optimize your investment!

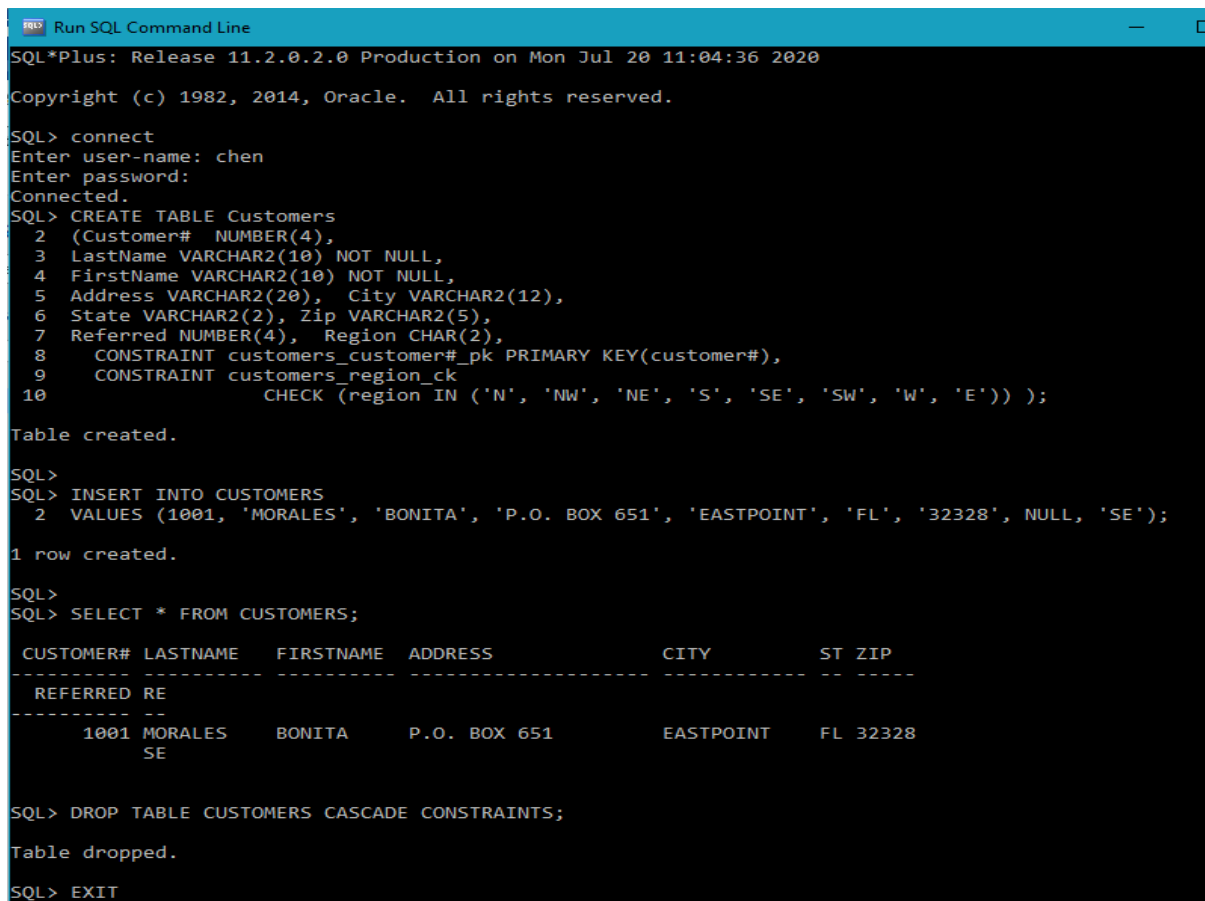
For a preliminary practice, you may type (or copy paste) the following SQL commands to SQL *PLUS to execute to see the result (you will explore more in depth in the fall). Good Luck!

```
CREATE TABLE Customers
(Customer# NUMBER(4),
LastName VARCHAR2(10) NOT NULL,
FirstName VARCHAR2(10) NOT NULL,
Address VARCHAR2(20), City VARCHAR2(12),
State VARCHAR2(2), Zip VARCHAR2(5),
Referred NUMBER(4), Region CHAR(2),
CONSTRAINT customers_customer#_pk PRIMARY KEY(customer#),
CONSTRAINT customers_region_ck
CHECK (region IN ('N', 'NW', 'NE', 'S', 'SE', 'SW', 'W', 'E')) );
```

```
INSERT INTO CUSTOMERS
VALUES (1001, 'MORALES', 'BONITA', 'P.O. BOX 651', 'EASTPOINT', 'FL', '32328', NULL, 'SE');
```

```
SELECT * FROM CUSTOMERS;
DROP TABLE CUSTOMERS CASCADE CONSTRAINTS;
```

The following is a result (captured screen) from the SQL commands you entered illustrated above.



```
Run SQL Command Line
SQL*Plus: Release 11.2.0.2.0 Production on Mon Jul 20 11:04:36 2020
Copyright (c) 1982, 2014, Oracle. All rights reserved.
SQL> connect
Enter user-name: chen
Enter password:
Connected.
SQL> CREATE TABLE Customers
 2 (Customer# NUMBER(4),
 3 LastName VARCHAR2(10) NOT NULL,
 4 FirstName VARCHAR2(10) NOT NULL,
 5 Address VARCHAR2(20), City VARCHAR2(12),
 6 State VARCHAR2(2), Zip VARCHAR2(5),
 7 Referred NUMBER(4), Region CHAR(2),
 8 CONSTRAINT customers_customer#_pk PRIMARY KEY(customer#),
 9 CONSTRAINT customers_region_ck
10 CHECK (region IN ('N', 'NW', 'NE', 'S', 'SE', 'SW', 'W', 'E')) );
Table created.
SQL>
SQL> INSERT INTO CUSTOMERS
 2 VALUES (1001, 'MORALES', 'BONITA', 'P.O. BOX 651', 'EASTPOINT', 'FL', '32328', NULL, 'SE');
1 row created.
SQL>
SQL> SELECT * FROM CUSTOMERS;
CUSTOMER# LASTNAME FIRSTNAME ADDRESS CITY ST ZIP
-----
REFERRED RE
-----
1001 MORALES BONITA P.O. BOX 651 EASTPOINT FL 32328
SE
SQL> DROP TABLE CUSTOMERS CASCADE CONSTRAINTS;
Table dropped.
SQL> EXIT
```

Finally, enter EXIT or quit to exit the SQL *PLUS