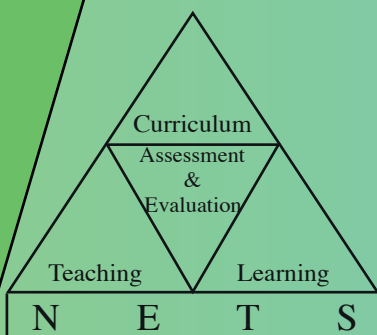


Grade Five Scholarship Examination 2020

Performance of Candidates



Research & Development Branch
National Evaluation & Testing Service
Department of Examinations

Grade 5 Scholarship Examinations 2015 - 2020 Performance of Candidates

Year		2015	2016	2017	2018	2019	2020
Number Sat		333672	343757	350462	350191	332168	326264
Obtained marks 70 and Above (35 and above for each paper)	No.	254690	260130	243236	276978	259445	283305
	%	76.33	75.67	69.40	79.09	78.11	86.83
Above Cut-Off (Qualified to receive bursaries and apply for schools)	No.	31853	32646	33163	36144	47667	47193
	%	9.55	9.50	9.46	10.32	14.35	14.46
Mean Value		109.50	107.86	106.43	117.98	114.38	125.65
S.D.		36.63	35.17	38.23	37.58	36.85	36.42

Table 1

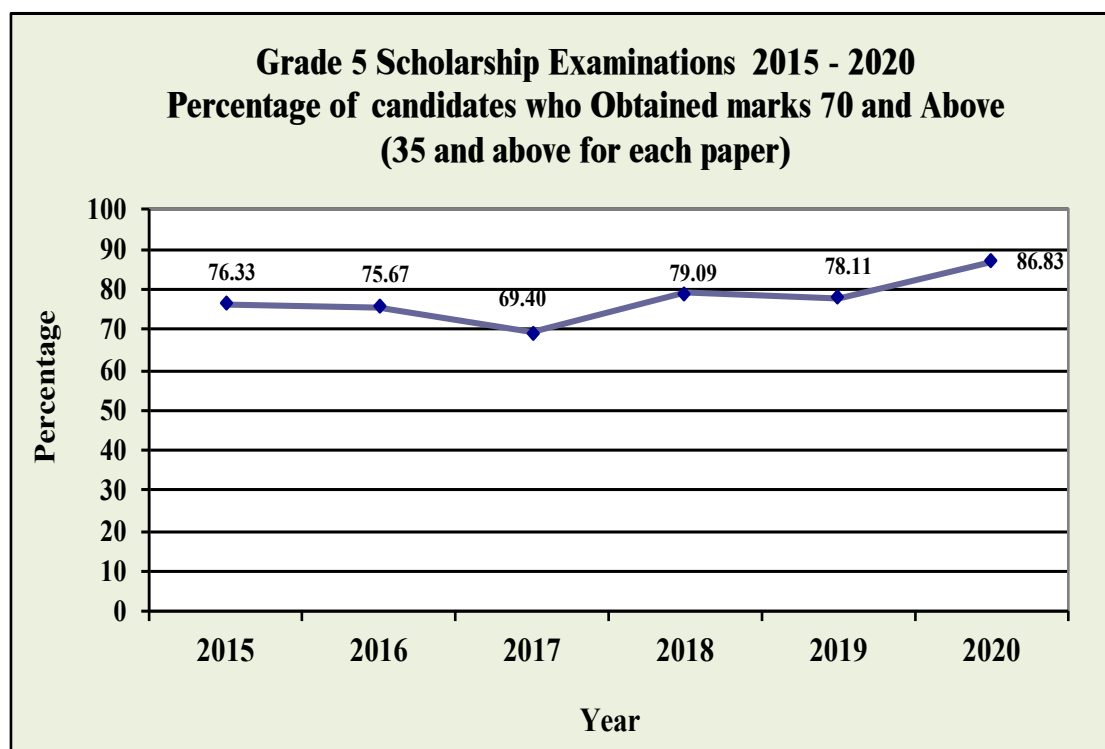


Figure 1

Grade 5 Scholarship Examinations 2011 - 2020

Year	Common Cut-Off marks		Number Sat	Above Cut-Off (Qualified to receive bursaries and apply for schools)		Number of Candidates Obtained marks 70 and above (35 and above for each paper)	
	Sinhala Medium	Tamil Medium		Number	%	Number	%
2011	156	153	312569	32433	10.38	203514	65.11
2012	152	149	310329	33383	10.76	199809	64.39
2013	160	156	322455	32617	10.12	223908	69.44
2014	163	159	327648	32735	9.99	258700	78.96
2015	160	154	333672	31853	9.55	254690	76.33
2016	159	153	343757	32646	9.50	260130	75.67
2017	164	156	350462	33163	9.46	243236	69.40
2018	168	165	350191	36144	10.32	276978	79.09
2019	159	154	332168	47667	14.35	259445	78.11
2020	169	162	326264	47193	14.46	283305	86.83

Table 2

Grade 5 Scholarship Examination - 2020 Distribution of Candidates who sat the examination, obtained marks above the Cut Off, above 100 and above 70 by Province

Province		Number Sat	Above Cut-Off		Obtained marks 100 and above (above 50 for each paper)		Obtained marks 70 and above (above 35 for each paper)	
			Number	%	Number	%	Number	%
1	Western	76470	10384	13.58	51775	67.71	67277	87.98
2	Central	43021	4428	10.29	26514	61.63	36472	84.78
3	Southern	40470	6311	15.59	28026	69.25	36123	89.26
4	Northern	18097	3175	17.54	11268	62.26	15079	83.32
5	Eastern	29681	3750	12.63	16960	57.14	23674	79.76
6	North Western	40042	6432	16.06	28224	70.49	35719	89.20
7	North Central	24877	4032	16.21	16614	66.78	21820	87.71
8	Uva	22832	3682	16.13	14935	65.41	19883	87.08
9	Sabaragamuwa	30774	4999	16.24	21380	69.47	27258	88.57
Island		326264	47193	14.46	215696	66.11	283305	86.83

Table 3

**Performance of Candidates by Province arranged in Descending Order
2019 - 2020**

2019

2020

Percentage distribution of candidates who obtained marks 70 and above by province *

Province	Number Sat	Obtained marks 70 and above (above 35 for each paper)	
		Number	%
1 Southern	41,868	34,335	82.01
2 North Western	40,341	32,768	81.23
3 Sabaragamuwa	30,912	24,823	80.30
4 Western	80,639	64,513	80.00
5 North Central	24,836	19,684	79.26
6 Uva	22,969	17,749	77.27
7 Central	43,762	32,681	74.68
8 Northern	17,335	12,479	71.99
9 Eastern	29,506	20,413	69.18
Island	332,168	259,445	78.11

Table 4

Percentage distribution of candidates who obtained marks 70 and above by province *

Province	Number Sat	Obtained marks 70 and above (above 35 for each paper)	
		Number	%
1 Southern	40,470	36,123	89.26
2 North Western	40,042	35,719	89.20
3 Sabaragamuwa	30,774	27,258	88.57
4 Western	76,470	67,277	87.98
5 North Central	24,877	21,820	87.71
6 Uva	22,832	19,883	87.08
7 Central	43,021	36,472	84.78
8 Northern	18,097	15,079	83.32
9 Eastern	29,681	23,674	79.76
Island	326,264	283,305	86.83

Table 5

Percentage distribution of candidates who obtained marks Above the Cut-Off by province *

Province	Number Sat	Above Cut-Off	
		Number	%
1 Sabaragamuwa	30,912	5,061	16.37
2 Northern	17,335	2,828	16.31
3 North Western	40,341	6,567	16.28
4 Southern	41,868	6,609	15.79
5 North Central	24,836	3,773	15.19
6 Uva	22,969	3,314	14.43
7 Western	80,639	11,273	13.98
8 Eastern	29,506	3,752	12.72
9 Central	43,762	4,490	10.26
Island	332,168	47,667	14.35

Table 6

Percentage distribution of candidates who obtained marks Above the Cut-Off by province *

Province	Number Sat	Above Cut-Off	
		Number	%
1 Northern	18,097	3,175	17.54
2 Sabaragamuwa	30,774	4,999	16.24
3 North Central	24,877	4,032	16.21
4 Uva	22,832	3,682	16.13
5 North Western	40,042	6,432	16.06
6 Southern	40,470	6,311	15.59
7 Western	76,470	10,384	13.58
8 Eastern	29,681	3,750	12.63
9 Central	43,021	4,428	10.29
Island	326,264	47,193	14.46

Table 7

* Percentage is calculated based on the number sat of each Province

Grade 5 Scholarship Examination - 2020
Distribution of Candidates who sat the examination, obtained marks
above the Cut-Off, above 100 and above 70 by District

District		Number Sat	Above Cut-Off		Obtained marks 100 and above (above 50 for each paper)		Obtained marks 70 and above (above 35 for each paper)	
			Number	%	Number	%	Number	%
1	Colombo	29,022	3,789	13.06	19,301	66.50	25,137	86.61
2	Gampaha	29,300	4,284	14.62	20,605	70.32	26,403	90.11
3	Kalutara	18,148	2,311	12.73	11,869	65.40	15,737	86.71
4	Kandy	21,979	2,297	10.45	14,266	64.91	19,105	86.92
5	Matale	8,380	947	11.30	5,471	65.29	7,281	86.89
6	Nuwara Eliya	12,662	1,184	9.35	6,777	53.52	10,086	79.66
7	Galle	9,282	1,160	12.50	6,239	67.22	8,197	88.31
8	Matara	20,305	3,040	14.97	13,948	68.69	18,046	88.87
9	Hambantota	10,883	2,111	19.40	7,839	72.03	9,880	90.78
10	Jaffna	8,326	1,736	20.85	5,492	65.96	7,063	84.83
11	Kilinochchi	2,503	406	16.22	1,489	59.49	2,015	80.50
12	Mannar	1,961	177	9.03	1,051	53.60	1,589	81.03
13	Vavuniya	2,964	495	16.70	1,817	61.30	2,470	83.33
14	Mullaitivu	2,343	361	15.41	1,419	60.56	1,942	82.89
15	Batticaloa	9,366	1,230	13.13	5,205	55.57	7,175	76.61
16	Ampara	12,722	1,710	13.44	7,922	62.27	10,791	84.82
17	Trincomalee	7,593	810	10.67	3,833	50.48	5,708	75.17
18	Kurunegala	27,177	4,857	17.87	20,597	75.79	25,108	92.39
19	Puttalam	12,865	1,575	12.24	7,627	59.28	10,611	82.48
20	Anuradhapura	17,256	2,834	16.42	11,441	66.30	15,083	87.41
21	Polonnaruwa	7,621	1,198	15.72	5,173	67.88	6,737	88.40
22	Badulla	14,155	2,325	16.43	9,281	65.57	12,295	86.86
23	Monaragala	8,677	1,357	15.64	5,654	65.16	7,588	87.45
24	Ratnapura	17,737	3,093	17.44	12,171	68.62	15,609	88.00
25	Kegalle	13,037	1,906	14.62	9,209	70.64	11,649	89.35
Island		326,264	47,193	14.46	215,696	66.11	283,305	86.83

Table 8

Performance of Candidates by District, arranged in Descending Order 2019 - 2020

Percentage distribution of candidates who obtained marks 70 and Above by District * arranged in Descending Order

2019

2020

District	Number Sat	Obtained marks 70 and above (above 35 for each paper)	
		Number	%
1 Kurunegala	27,492	23,552	85.67
2 Hambantota	11,169	9,538	85.40
3 Gampaha	31,083	25,430	81.81
4 Kegalle	13,033	10,632	81.58
5 Matara	13,399	10,903	81.37
6 Galle	17,300	13,894	80.31
7 Polonnaruwa	7,616	6,078	79.81
8 Ratnapura	17,879	14,191	79.37
9 Anuradhapura	17,220	13,606	79.01
10 Colombo	30,847	24,356	78.96
11 Kalutara	18,709	14,727	78.72
12 Matale	8,560	6,703	78.31
13 Badulla	14,207	11,010	77.50
14 Kandy	22,343	17,266	77.28
15 Monaragala	8,762	6,739	76.91
16 Ampara	12,386	9,495	76.66
17 Jaffna	7,972	6,083	76.30
18 Vavuniya	2,745	1,980	72.13
19 Puttalam	12,849	9,216	71.73
20 Mullaitivu	2,072	1,485	71.67
21 Nuwara Eliya	12,859	8,712	67.75
22 Batticaloa	9,393	6,129	65.25
23 Kilinochchi	2,302	1,502	65.25
24 Mannar	2,244	1,429	63.68
25 Trincomalee	7,727	4,789	61.98
Island	332,168	259,445	78.11

Table 9

District	Number Sat	Obtained marks 70 and above (above 35 for each paper)	
		Number	%
1 Kurunegala	27,177	25,108	92.39
2 Hambantota	10,883	9,880	90.78
3 Gampaha	29,300	26,403	90.11
4 Kegalle	13,037	11,649	89.35
5 Matara	20,305	18,046	88.87
6 Polonnaruwa	7,621	6,737	88.40
7 Galle	9,282	8,197	88.31
8 Ratnapura	17,737	15,609	88.00
9 Monaragala	8,677	7,588	87.45
10 Anuradhapura	17,256	15,083	87.41
11 Kandy	21,979	19,105	86.92
12 Matale	8,380	7,281	86.89
13 Badulla	14,155	12,295	86.86
14 Kalutara	18,148	15,737	86.71
15 Colombo	29,022	25,137	86.61
16 Jaffna	8,326	7,063	84.83
17 Ampara	12,722	10,791	84.82
18 Vavuniya	2,964	2,470	83.33
19 Mullaitivu	2,343	1,942	82.89
20 Puttalam	12,865	10,611	82.48
21 Mannar	1,961	1,589	81.03
22 Kilinochchi	2,503	2,015	80.50
23 Nuwara Eliya	12,662	10,086	79.66
24 Batticaloa	9,366	7,175	76.61
25 Trincomalee	7,593	5,708	75.17
Island	326,264	283,305	86.83

Table 10

* Percentage is calculated based on the number sat of each District

**Percentage distribution of candidates who obtained
marks Above the Cut-Off by District *
arranged in Descending Order**

2019

2020

	District	Number Sat	Above Cut-Off	
			Number	%
1	Jaffna	7,972	1,586	19.89
2	Hambantota	11,169	2,181	19.53
3	Kurunegala	27,492	4,931	17.94
4	Ratnapura	17,879	3,089	17.28
5	Vavuniya	2,745	451	16.43
6	Matara	13,399	2,068	15.43
7	Mullaitivu	2,072	319	15.40
8	Anuradhapura	17,220	2,651	15.39
9	Kegalle	13,033	1,972	15.13
10	Gampaha	31,083	4,685	15.07
11	Badulla	14,207	2,111	14.86
12	Polonnaruwa	7,616	1,122	14.73
13	Monaragala	8,762	1,203	13.73
14	Galle	17,300	2,360	13.64
15	Batticaloa	9,393	1,279	13.62
16	Ampara	12,386	1,677	13.54
17	Kalutara	18,709	2,527	13.51
18	Colombo	30,847	4,061	13.16
19	Puttalam	12,849	1,636	12.73
20	Kilinochchi	2,302	277	12.03
21	Matale	8,560	1,004	11.73
22	Kandy	22,343	2,342	10.48
23	Trincomalee	7,727	796	10.30
24	Nuwara Eliya	12,859	1,144	8.90
25	Mannar	2,244	195	8.69
	Island	332,168	47,667	14.35

Table 11

	District	Number Sat	Above Cut-Off	
			Number	%
1	Jaffna	8,326	1,736	20.85
2	Hambantota	10,883	2,111	19.40
3	Kurunegala	27,177	4,857	17.87
4	Ratnapura	17,737	3,093	17.44
5	Vavuniya	2,964	495	16.70
6	Badulla	14,155	2,325	16.43
7	Anuradhapura	17,256	2,834	16.42
8	Kilinochchi	2,503	406	16.22
9	Polonnaruwa	7,621	1,198	15.72
10	Monaragala	8,677	1,357	15.64
11	Mullaitivu	2,343	361	15.41
12	Matara	20,305	3,040	14.97
13	Gampaha	29,300	4,284	14.62
14	Kegalle	13,037	1,906	14.62
15	Ampara	12,722	1,710	13.44
16	Batticaloa	9,366	1,230	13.13
17	Colombo	29,022	3,789	13.06
18	Kalutara	18,148	2,311	12.73
19	Galle	9,282	1,160	12.50
20	Puttalam	12,865	1,575	12.24
21	Matale	8,380	947	11.30
22	Trincomalee	7,593	810	10.67
23	Kandy	21,979	2,297	10.45
24	Nuwara Eliya	12,662	1,184	9.35
25	Mannar	1,961	177	9.03
	Island	326,264	47,193	14.46

Table 12

* Percentage is calculated based on the number sat of each District

Grade 5 Scholarship Examination - 2020

Percentage Distribution of Candidates who obtained marks 70 and above by Education Zone arranged in Descending Order

Education Zone		Number Sat	Obtained marks 70 and above (above 35 for each paper)	
			Number	%
1	Nikaweratiya	3606	3407	94.48
2	Kuliyapitiya	4649	4357	93.72
3	Kegalle	4460	4172	93.54
4	Gampaha	8221	7659	93.16
5	Kurunegala	5607	5193	92.62
6	Tangalle	2998	2771	92.43
7	Wilgamuwa	847	780	92.09
8	Mulatiyana (Hakmana)	2587	2381	92.04
9	Walasmulla	2813	2587	91.97
10	Maho	5225	4799	91.85
11	Akuressa	2376	2163	91.04
12	Sri Jayawardanapura	7265	6611	91.00
13	Giriulla	4501	4094	90.96
14	Thanamalwila	1563	1421	90.91
15	Kandy	5926	5387	90.90
16	Ibbagamuwa	3589	3258	90.78
17	Dehiattakandiya	1083	980	90.49
18	Minuwangoda	6211	5617	90.44
19	Embilipitiya	4940	4456	90.20
20	Thambuttegama	3477	3132	90.08
21	Mawanella	4080	3673	90.02
22	Homagama	5252	4724	89.95
23	Ampara	2868	2577	89.85
24	Hingurakgoda	3173	2846	89.69
25	Matugama	3467	3104	89.53
26	Balangoda	3168	2832	89.39
27	Kelaniya	7414	6615	89.22
28	Hambantota	5072	4522	89.16
29	Bandarawela	3225	2872	89.05
30	Wellawaya	2267	2017	88.97
31	Galle	7174	6368	88.76
32	Ambalangoda	3359	2981	88.75
33	Matara	5394	4786	88.73
34	Elpitiya	3761	3333	88.62
35	Viyaluwa	1109	980	88.37
36	Polonnaruwa	2239	1976	88.25
37	Galewela	3146	2771	88.08
38	Kekirawa	3528	3103	87.95
39	Ratnapura	6338	5574	87.95
40	Jaffna	2795	2454	87.80
41	Badulla	2730	2396	87.77
42	Horana	5756	5034	87.46
43	Negombo	7454	6512	87.36
44	Denuwara	2631	2296	87.27
45	Chilaw	5704	4974	87.20
46	Thenmarachchi	877	764	87.12
47	Udugama	2162	1883	87.10
48	Teldeniya	2312	2011	86.98
49	Galenbindunuwewa	2265	1970	86.98
50	Mahivananava	2541	2210	86.97

Education Zone		Number Sat	Obtained marks 70 and above (above 35 for each paper)	
			Number	%
51	Katugastota	3642	3159	86.74
52	Dimbulagala	2209	1915	86.69
53	Anuradhapura	5183	4490	86.63
54	Piliyandala	5298	4585	86.54
55	Naula	673	582	86.48
56	Monaragala	2772	2397	86.47
57	Batticaloa	2229	1926	86.41
58	Wattegama	3108	2666	85.78
59	Welimada	3019	2580	85.46
60	Kebithigollewa	2803	2388	85.19
61	Kalutara	8925	7599	85.14
62	Mahaoya	826	701	84.87
63	Matale	3714	3148	84.76
64	Hanguranketha	1601	1357	84.76
65	Mullaitivu	1635	1385	84.71
66	Deniyaya (Morawaka)	2774	2348	84.64
67	Dehiowita	4497	3804	84.59
68	Bibile	2075	1753	84.48
69	Valikamam	2543	2136	84.00
70	Vavuniya South	2300	1923	83.61
71	Nivitigala	3291	2747	83.47
72	Kantale	1295	1078	83.24
73	Mannar	1462	1217	83.24
74	Kalmunai	2924	2428	83.04
75	Vadamarachchi	1479	1227	82.96
76	Vavuniya North	664	547	82.38
77	Gampola	4360	3586	82.25
78	Colombo	11207	9217	82.24
79	Passara	1531	1257	82.10
80	Sammanthurai	1931	1585	82.08
81	Akkaraipattu	2088	1713	82.04
82	Trincomalee North	514	421	81.91
83	Walapane	1742	1423	81.69
84	Hatton	3781	3046	80.56
85	Thirukkivil	1002	807	80.54
86	Kilinochchi	2503	2015	80.50
87	Batticaloa Central	2783	2229	80.09
88	Trincomalee	2379	1890	79.45
89	Kotmale	1783	1410	79.08
90	Paddirippu	1533	1210	78.93
91	Puttalam	7161	5637	78.72
92	Thunukkai	708	557	78.67
93	Islands	632	482	76.27
94	Nuwara Eliya	3755	2850	75.90
95	Madhu	499	372	74.55
96	Muthur	1574	1148	72.94
97	Batticaloa West	924	641	69.37
98	Kinniya	1831	1171	63.95
99	Kalkudah	1897	1169	61.62
Island		326264	283305	86.83

Table 13

Grade 5 Scholarship Examination - 2020

Percentage Distribution of Candidates who obtained marks Above the Cut-Off by Education Zone arranged in Descending Order

Education Zone		Number Sat	Above Cut-Off	
			Number	%
1	Jaffna	2795	749	26.80
2	Tangalle	2998	647	21.58
3	Walasmulla	2813	590	20.97
4	Gampaha	8221	1714	20.85
5	Batticaloa	2229	460	20.64
6	Akuressa	2376	476	20.03
7	Vadamarachchi	1479	296	20.01
8	Kuliyapitiya	4649	927	19.94
9	Balangoda	3168	629	19.85
10	Badulla	2730	531	19.45
11	Thenmarachchi	877	170	19.38
12	Thambuttegama	3477	663	19.07
13	Kegalle	4460	849	19.04
14	Polonnaruwa	2239	426	19.03
15	Kurunegala	5607	1066	19.01
16	Thanamalwila	1563	296	18.94
17	Kekirawa	3528	656	18.59
18	Nikaweratiya	3606	668	18.52
19	Ampara	2868	524	18.27
20	Ratnapura	6338	1155	18.22
21	Bandarawela	3225	586	18.17
22	Vavuniya South	2300	409	17.78
23	Valikamam	2543	451	17.73
24	Mullaitivu	1635	289	17.68
25	Anuradhapura	5183	914	17.63
26	Embilipitiya	4940	866	17.53
27	Giriulla	4501	783	17.40
28	Hambantota	5072	874	17.23
29	Maho	5225	890	17.03
30	Homagama	5252	885	16.85
31	Wellawaya	2267	377	16.63
32	Mulatiyana (Hakmana)	2587	430	16.62
33	Kilinochchi	2503	406	16.22
34	Matara	5394	873	16.18
35	Monaragala	2772	442	15.95
36	Welimada	3019	479	15.87
37	Hingurakgoda	3173	502	15.82
38	Mahiyanganaya	2541	397	15.62
39	Sri Jayawardanapura	7265	1115	15.35
40	Minuwangoda	6211	927	14.93
41	Horana	5756	844	14.66
42	Ibbagamuwa	3589	523	14.57
43	Hanguranketha	1601	233	14.55
44	Kantale	1295	187	14.44
45	Chilaw	5704	796	13.96
46	Galle	7174	992	13.83
47	Kandy	5926	817	13.79
48	Dehiattakandiya	1083	148	13.67
49	Mawanella	4080	555	13.60
50	Batticaloa Central	2783	378	13.58

Education Zone		Number Sat	Above Cut-Off	
			Number	%
51	Nivitigala	3291	443	13.46
52	Kelaniya	7414	973	13.12
53	Elpitiya	3761	492	13.08
54	Kalmunai	2924	382	13.06
55	Trincomalee	2379	310	13.03
56	Vavuniya North	664	86	12.95
57	Ambalangoda	3359	433	12.89
58	Viyaluwa	1109	141	12.71
59	Matugama	3467	433	12.49
60	Passara	1531	191	12.48
61	Piliyandala	5298	649	12.25
62	Dimbulagala	2209	270	12.22
63	Akkaraipattu	2088	255	12.21
64	Galenbindunuwewa	2265	272	12.01
65	Galewela	3146	374	11.89
66	Paddirippu	1533	181	11.81
67	Kebithigollewa	2803	329	11.74
68	Thirukkovil	1002	117	11.68
69	Bibile	2075	242	11.66
70	Kalutara	8925	1034	11.59
71	Matale	3714	417	11.23
72	Dehiowita	4497	502	11.16
73	Islands	632	70	11.08
74	Kotmale	1783	194	10.88
75	Puttalam	7161	779	10.88
76	Udugama	2162	235	10.87
77	Wilgamuwa	847	92	10.86
78	Sammanthurai	1931	201	10.41
79	Muthur	1574	163	10.36
80	Hatton	3781	391	10.34
81	Mannar	1462	149	10.19
82	Colombo	11207	1140	10.17
83	Thunukkai	708	72	10.17
84	Mahaoya	826	83	10.05
85	Katugastota	3642	363	9.97
86	Deniyaya (Morawaka)	2774	269	9.70
87	Wattegama	3108	298	9.59
88	Naula	673	64	9.51
89	Walapane	1742	162	9.30
90	Negombo	7454	670	8.99
91	Denuwara	2631	234	8.89
92	Teldeniya	2312	203	8.78
93	Gampola	4360	382	8.76
94	Trincomalee North	514	45	8.75
95	Kalkudah	1897	151	7.96
96	Batticaloa West	924	60	6.49
97	Kinniya	1831	105	5.73
98	Madhu	499	28	5.61
99	Nuwara Eliya	3755	204	5.43
Island		326264	47193	14.46

Table 14

Grade 5 Scholarship Examination - 2020
Distribution of Candidates Who Qualified for Bursaries
under Special Needs Category by Province

No.	Province	No. of Candidates
1	Western	75
2	Central	26
3	Southern	21
4	Northern	49
5	Eastern	14
6	North Western	17
7	North Central	13
8	Uva	9
9	Sabaragamuwa	23
Island		247

Table 15

Grade 5 Scholarship Examination - 2020
Distribution of Candidates Who Qualified for Bursaries
under Special Needs Category by District

No.	District	No. of Candidates
1	Colombo	29
2	Gampaha	40
3	Kalutara	6
4	Kandy	11
5	Matale	7
6	Nuwara Eliya	8
7	Galle	5
8	Matara	6
9	Hambantota	10
10	Jaffna	32
11	Kilinochchi	5
12	Mannar	0
13	Vavuniya	7
14	Mullaitivu	5
15	Batticaloa	4
16	Ampara	8
17	Trincomalee	2
18	Kurunegala	12
19	Puttalam	5
20	Anuradhapura	11
21	Polonnaruwa	2
22	Badulla	7
23	Monaragala	2
24	Ratnapura	14
25	Kegalle	9
Island		247

Table 16

Grade 5 Scholarship Examination - 2020
Distribution of Candidates Who Qualified for Bursaries
under Special Needs Category by Education Zone

No.	Education Zone	No. of Candidates
1	Colombo	3
2	Homagama	1
3	Sri Jayawardanapura	9
4	Piliyandala	16
5	Gampaha	12
6	Minuwangoda	6
7	Negombo	16
8	Kelaniya	6
9	Kalutara	2
10	Horana	4
11	Kandy	7
12	Denuwara	1
13	Gampola	1
14	Wattegama	2
15	Matale	6
16	Galewela	1
17	Nuwara Eliya	2
18	Kotmale	2
19	Hatton	3
20	Walapane	1
21	Galle	1
22	Elpitiya	1
23	Ambalangoda	2
24	Udugama	2
25	Matara	3
26	Akuressa	1
27	Deniyaya (Morawaka)	1
28	Tangalle	6
29	Hambantota	4
30	Jaffna	9
31	Islands	1
32	Thenmarachchi	15
33	Valikamam	6

No.	Education Zone	No. of Candidates
34	Vadamarachchi	1
35	Kilinochchi	5
36	Vavuniya South	3
37	Vavuniya North	4
38	Mullaitivu	5
39	Kalkudah	1
40	Batticaloa West	3
41	Ampara	6
42	Dehiattakandiya	1
43	Akkaraipattu	1
44	Kinniya	2
45	Kurunegala	6
46	Kuliyapitiya	2
47	Nikaweratiya	2
48	Maho	1
49	Giriulla	1
50	Puttalam	3
51	Chilaw	2
52	Anuradhapura	8
53	Thambuttegama	1
54	Kekirawa	1
55	Kebithigollewa	1
56	Hingurakgoda	1
57	Dimbulagala	1
58	Bandarawela	2
59	Welimada	5
60	Bibile	2
61	Ratnapura	5
62	Balangoda	8
63	Nivitigala	1
64	Kegalle	4
65	Mawanella	3
66	Dehiowita	2
Island		247

Table 17

Grade 5 Scholarship Examination - 2020
Distribution of Frequencies of Marks for the Paper I by Income Level

Class Interval	Higher Income Group				Lower Income Group				All Candidates			
	F	%	CF	%	F	%	CF	%	F	%	CF	%
91 - 100	4128	3.39	121792	100.00	1882	0.92	204469	100.00	6010	1.84	326261	100.00
81 - 90	14038	11.53	117664	96.61	9489	4.64	202587	99.08	23527	7.21	320251	98.16
71 - 80	22618	18.57	103626	85.08	21992	10.76	193098	94.44	44610	13.67	296724	90.95
61 - 70	27846	22.86	81008	66.51	38577	18.87	171106	83.68	66423	20.36	252114	77.27
51 - 60	26073	21.41	53162	43.65	49103	24.01	132529	64.82	75176	23.04	185691	56.91
41 - 50	17530	14.39	27089	22.24	45571	22.29	83426	40.80	63101	19.34	110515	33.87
31 - 40	7609	6.25	9559	7.85	28000	13.69	37855	18.51	35609	10.91	47414	14.53
21 - 30	1742	1.43	1950	1.60	8567	4.19	9855	4.82	10309	3.16	11805	3.62
11 - 20	181	0.15	208	0.17	1043	0.51	1288	0.63	1224	0.38	1496	0.46
01 - 10	20	0.02	27	0.02	190	0.09	245	0.12	210	0.06	272	0.08
00 - 00	7	0.01	7	0.01	55	0.03	55	0.03	62	0.02	62	0.02

Table 18

Grade 5 Scholarship Examination - 2020
Distribution of Frequencies of Marks for the Paper II by Income Level

Class Interval	Higher Income Group				Lower Income Group				All Candidates			
	F	%	CF	%	F	%	CF	%	F	%	CF	%
91 - 100	25634	21.05	121792	100.00	16815	8.22	204471	100.00	42449	13.01	326263	100.00
81 - 90	34844	28.61	96158	78.95	37613	18.40	187656	91.78	72457	22.21	283814	86.99
71 - 80	21860	17.95	61314	50.34	34223	16.74	150043	73.38	56083	17.19	211357	64.78
61 - 70	14310	11.75	39454	32.39	29030	14.20	115820	56.64	43340	13.28	155274	47.59
51 - 60	9513	7.81	25144	20.65	24272	11.87	86790	42.45	33785	10.36	111934	34.31
41 - 50	6670	5.48	15631	12.83	20387	9.97	62518	30.58	27057	8.29	78149	23.95
31 - 40	4226	3.47	8961	7.36	16542	8.09	42131	20.61	20768	6.37	51092	15.66
21 - 30	2779	2.28	4735	3.89	13423	6.56	25589	12.51	16202	4.97	30324	9.29
11 - 20	1682	1.38	1956	1.61	10558	5.16	12166	5.95	12240	3.75	14122	4.33
01 - 10	268	0.22	274	0.22	1539	0.75	1608	0.79	1807	0.55	1882	0.58
00 - 00	6	0.00	6	0.00	69	0.03	69	0.03	75	0.02	75	0.02

Table 19

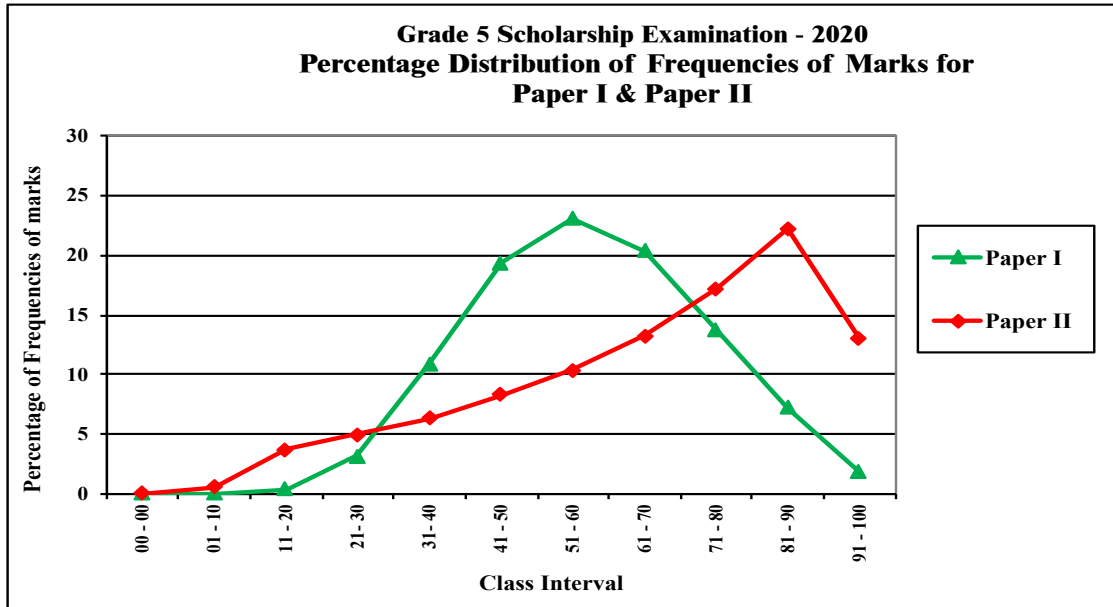


Figure 2

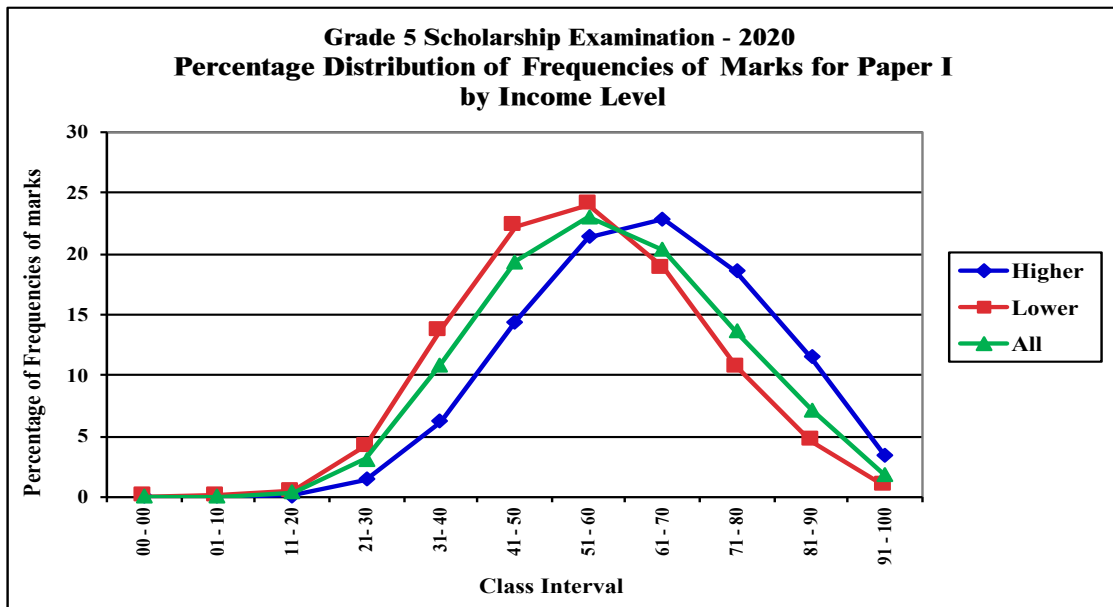


Figure 3

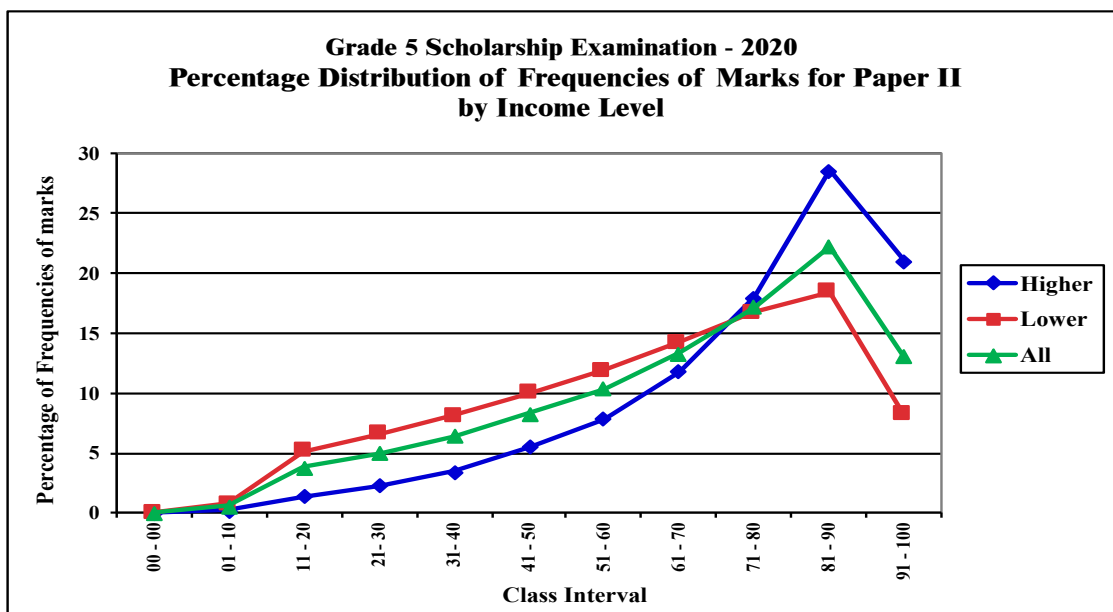


Figure 4