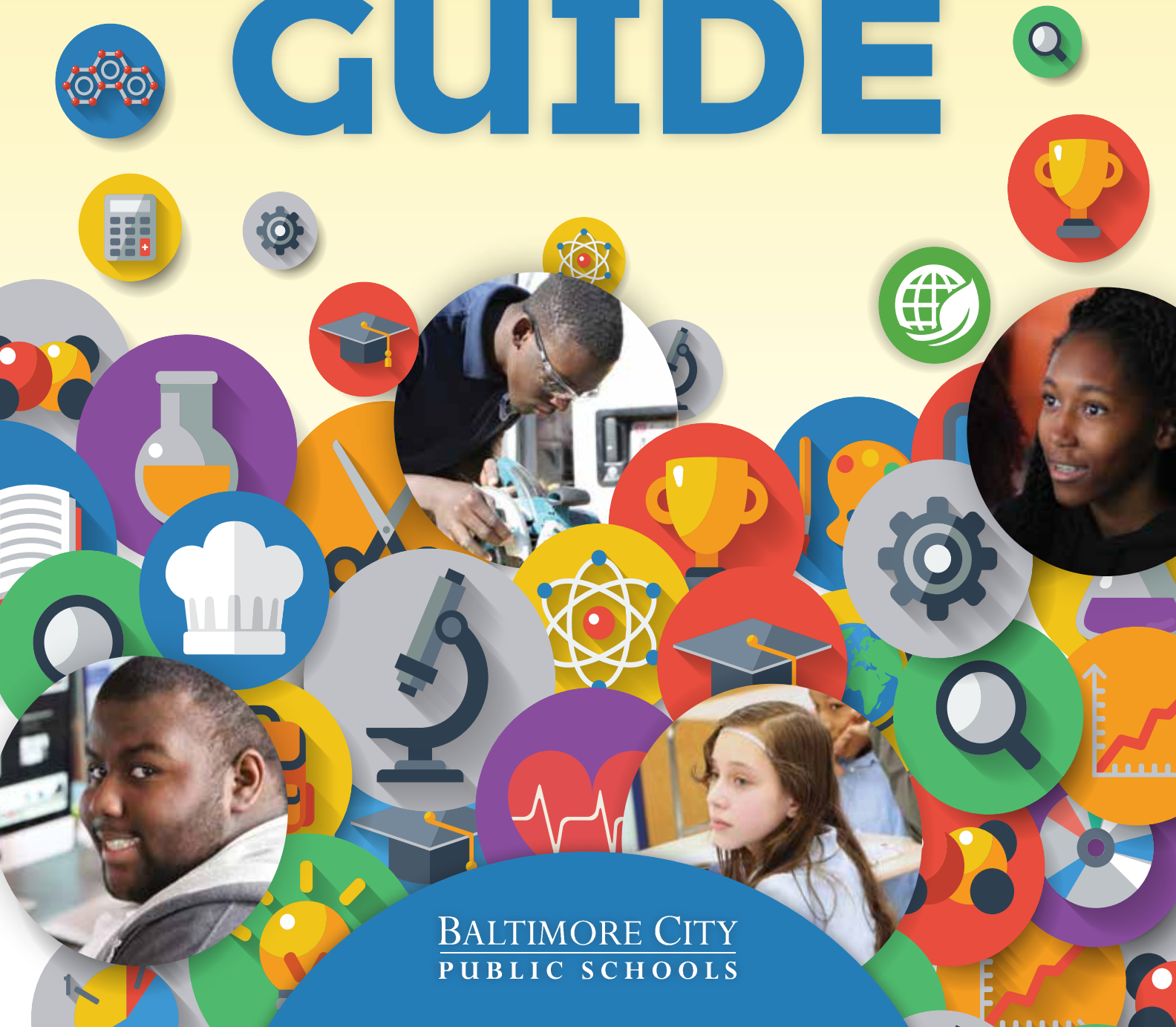


2017-18

Middle & High School

CHOICE GUIDE



BALTIMORE CITY
PUBLIC SCHOOLS



Dear 5th- and 8th-grade students,

Congratulations on your upcoming entry to middle or high school! It's an exciting time for you and your family — you're one step closer to your future goals of going to college or finding your dream job.

You've learned a lot over the past few years, like how to do complex math problems, write a compelling essay, and conduct a science experiment. The next phase of your educational career holds new and exciting lessons. At City Schools, you get to decide where you'll be learning in the coming years by choosing your middle or high school.

To help you and your family make an informed decision, City Schools has gathered the information you need into this guide. Read the school profiles to get a feel for what each school offers, and browse through the informational pages to learn more about the next steps to take. Visit www.baltimorecityschools.org/choice for more details and forms.

This is your chance to choose a school that you will want to go to for the next few years. Think about what it is you want from your school — classes, career preparation, sports, activities. Think about what needs to be in place for you to do your best, and make sure the schools you choose can give you what you need. These are important factors to consider, because to succeed at school, you need to be there every day, ready to learn.

There are lots of school options with different types of programs, and we're here to help you understand your options. Don't hesitate to ask at your school or call us at 443-984-2000 for help in planning the next steps toward your future success.

I'm proud of what you've accomplished so far and can't wait to see the next steps you take on your path to high school graduation, college and a career.

Sonja B. Santelises

Dr. Sonja Brookins Santelises
Chief Executive Officer
Baltimore City Public Schools

TABLE OF CONTENTS

How Choice Works	2
School Admission Types	3
Additional Considerations about the Schools You Choose	3
More about Middle School Choice	4
Priority groups	
Siblings	
School location	
Special academic programming	
More about High School Choice	6
Students now enrolled at middle/high schools	
Opportunities for college credit	
Special academic programming	
Career Preparation	8
Additional Information	14
Students with disabilities	
Students who are not currently enrolled at City Schools	
Middle School Options at a Glance	16
High School Options at a Glance	18
School Profiles	20
Elementary/middle schools	21
Middle schools	23
Middle/high schools	25
High schools	29

Baltimore City Public Schools' Notice of Nondiscrimination

Baltimore City Public Schools does not discriminate on the basis of race, color, ancestry or national origin, religion, sex, sexual orientation, gender identity, gender expression, marital status, disability, veteran status, genetic information, or age in its programs and activities, and provides equal access to the Boy Scouts of America and other designated youth groups.

For inquiries regarding the nondiscrimination policies, please contact: Equal Opportunity Manager, Title IX Coordinator, Equal Employment Opportunity and Title IX Compliance | 200 E. North Avenue | Room 208 | Baltimore, MD 21202 | Phone 410-396-8542 | Fax 410-396-2955

HOW CHOICE WORKS

STEP 1:

Get informed about your options, including the requirements and application processes for different schools (see page 3) and what's special about each school. You can find out more by reading this guide or visiting the "Find a School" feature on City Schools' website (www.baltimorecityschools.org/choice).

STEP 2:

Pick five schools to enter on your choice application, ranking them from first choice to fifth.

To help narrow down your top five, think about the following:

- What interests you most about school? Specific subjects? Job training? Sports or other activities? Something else?
- At what type of school do you think you'd be most successful? Big or small? All boys/girls or co-ed? A school with a specific focus or with lots of options?
- How will you get to school? How long will it take you to get there? Are you sure you can be there on time every day? (Keep in mind that the MTA will be making significant changes to bus routes as of June 2017. Visit mta.maryland.gov/baltimorelink for more information.)
- What do your family, school counselor, teachers, or friends think about the choices you are considering?

Some schools have a school-based lottery or their own specialized application instead of the choice application process (see page 3). If you're interested in one or more of these schools, contact the schools for more information and apply to them separately by the individual deadlines. Do not include them on your choice application.

STEP 3:

Complete your choice application and submit it to your current school by January 20, 2017.

Choice applications are available at elementary and middle schools, and can also be downloaded from www.baltimorecityschools.org/choice.

STEP 4:

Look for a letter from City Schools by March 1, 2017, letting you know where you'll be going for middle or high school next year.



SCHOOL ADMISSION TYPES

There are different ways that students are admitted to schools. Before you select the schools to enter on your choice application, check the requirements for each school.

CHOICE LOTTERY >

If more students choose a particular school than that school has space to serve and that school has no other specific requirements for admission as described below, then the district office conducts a lottery to place students. To apply to a choice lottery school, include that school on your 2017-18 choice application.

SCHOOL-BASED LOTTERY >

Some charter or contract schools have a separate application process that includes a school-based lottery. Students should not include these schools on their choice application but instead apply separately through the schools' own process. To apply to a school-based lottery school, contact the school. For many charter schools, the application deadline is February 10, 2017.

ACADEMIC ENTRANCE CRITERIA >

When a school has academic entrance criteria, a student must have a minimum "composite score" to be considered for admittance. The score takes into account academic achievement and, for some schools, attendance.

For schools with entrance criteria, students who apply

are ranked according to their composite scores. If space is available at a particular school, students who score lower than the required minimum score may be accepted. If more eligible students apply than the school has room to serve — as usually happens with Baltimore City College, Baltimore Polytechnic Institute, and the Advanced Academics program at Roland Park Elementary/Middle School — students are accepted based on composite score rank. After available places have been assigned, a wait list is established of the next 50 most qualified students, based on composite score.

If you need more information about your composite score, please speak with the choice liaison at your school.

SPECIALIZED >

Some schools have a specific focus and process for admission. The application process for each of these schools is listed as part of their school profile in this guide.

- Baltimore Design School (page 25)
- Baltimore School for the Arts (page 29)
- Bard High School Early College (page 30)
- National Academy Foundation (page 27)
- P-TECH at Carver and Dunbar (pages 30 and 34)

The Ingenuity Project offered at Hamilton, Mount Royal, and Roland Park elementary/middle schools and at Baltimore Polytechnic Institute requires a separate application. See page 5 for more information.

ADDITIONAL CONSIDERATIONS ABOUT THE SCHOOLS YOU CHOOSE

Each year, the district reviews and assesses how individual schools are doing — and how the district as a whole is doing in providing all students and families with high-quality school options.

This annual school review process helps City Schools create better options for students and families by strengthening low-performing schools, expanding the reach of high-performing schools, tapping into the resources of outside organizations to operate or partner with schools, ensuring as many students as possible have access to modern buildings, and closing schools with poor prospects of improvement for growth.

The district's review process takes

into account academic performance, enrollment trends, facilities needs, the range of school options available in different areas of the city, and opportunities to create new schools or programs.

In the area of performance, the district takes a comprehensive look at the program offerings, enrollment, and student achievement of all schools. For schools that are run by outside organizations through a contractual arrangement with the district, measures specific to the governance role of these schools' operators are also reviewed.

The district also looks at school

buildings within the context of the most recent updates to City Schools' buildings plan. The goal is to bring new or extensively renovated buildings to every area of the city.

Depending on the findings of the review, the district recommends that the Board of School Commissioners consider changes at certain schools and programs. This year's recommended changes for middle and high schools are indicated on individual school profiles in this guide.

Ask your school choice liaison or visit the district website at www.baltimorecityschools.org to find out more.

MORE ABOUT MIDDLE SCHOOL CHOICE

PRIORITY GROUPS

All 5th-grade students are placed in priority groups, based on whether the school they currently attend offers middle grades or feeds directly into a school with middle grades. (Exceptions are students applying to charter or contract schools, the Ingenuity Project, or Advanced Academics.)

Priority group 1 includes students who attend elementary schools that do not have middle grades and do not feed into a specific school with middle grades. Students at these schools must select a middle school for next year.

Priority group 2 includes students who attend elementary schools that have middle grades or feed into a specific school with middle grades. Students at these schools can choose their middle school through the choice process; stay at their current school (if it has grades 6–8); or attend the K–8 school for which their current elementary school is a “feeder.”

SIBLINGS

If you want to go to the same middle school where a sibling is already enrolled (as long as the school participates in middle school choice), include that school on your application and City Schools will try to place you there. (Exceptions are students applying to the Ingenuity Project or Advanced Academics.) A sibling is a brother or sister living in the same household as you, or a child who is the legal responsibility of your parent or legal guardian. To prove sibling status, you and your family must submit birth certificates, adoption documents, or custody/guardianship papers for each student.

SCHOOL LOCATION

In order to keep young students close to their communities, City Schools gives placement preference to students who want to attend middle schools close to where they live. (Exceptions are students applying to charter schools, the Ingenuity Project, or Advanced Academics.) See “Middle Schools by Quadrant” on page 17, and be sure that your current school has your correct address on file.

SPECIAL ACADEMIC PROGRAMMING

GIFTED AND ADVANCED LEARNING

Gifted and advanced learners perform or show the potential to perform at high levels academically, artistically, creatively, or in leadership. Gifted and advanced learners can enroll in honors classes, including math, English, science, and social studies, where they will prepare for higher-level classes, compete in district and statewide competitions, and work on challenging projects. For more information about gifted and advanced learning, including how students are identified, please visit www.baltimorecityschools.org/GAL.

SCHOOLS:

- Arlington Elementary/Middle School*
- Baltimore Design School
- Baltimore International Academy*
- Belmont Elementary School*
- Cecil Elementary School*
- Cross Country Elementary/Middle School
- Elmer A. Henderson: A Johns Hopkins Partnership School*
- Federal Hill Preparatory*
- Francis Scott Key Elementary/Middle School
- Furman Templeton Preparatory Academy*
- Garrett Heights Elementary/Middle School*
- Gilmore Elementary School*
- Glenmount Elementary/Middle School*
- Hamilton Elementary/Middle School*
- Hampden Elementary/Middle School*
- Hampstead Hill Academy*
- Lakeland Elementary/Middle School*
- Maree G. Farring Elementary/Middle School*
- Moravia Park Elementary School*
- The Mount Washington School*
- Mount Royal Elementary/Middle School
- North Bend Elementary/Middle School*
- Patterson Park Public Charter School*
- Roland Park Elementary/Middle School
- Thomas Jefferson Elementary/Middle School*
- Thomas Johnson Elementary/Middle School*
- Waverly Elementary/Middle School
- Woodhome Elementary/Middle School*

**This school does not participate in middle school choice.*



INGENUITY PROJECT

“I like that they challenge you on a higher level. The Ingenuity Project makes us be able to challenge ourselves so we can be better prepared for high school.”

—Angelica, Mount Royal Elementary/Middle School

ADVANCED ACADEMICS

These programs provide differentiated academic opportunities for 6th- to 8th-grade students who learn at a fast pace and can benefit from greater depth and breadth in instruction. Students must have a composite score of 355 to qualify.

SCHOOLS:

- Cross Country Elementary/Middle School
- Francis Scott Key Elementary/Middle School
- Mount Royal Elementary/Middle School
- Roland Park Elementary/Middle School
- Waverly Elementary/Middle School

INGENUITY PROJECT

This content-rich, fast-paced mathematics and science program engages students as they move from memorizing to thinking and applying. Students take advanced classes, conduct lab experiments, and participate in mathematics and science competitions.

Interested students must submit a separate application to the program office (visit www.ingenuityproject.org or call 410-662-8665); students who meet requirements then take an admission test to evaluate reading and mathematics ability. Students accepted into the Ingenuity Project are expected to maintain an 80 percent average or higher in their academic classes, complete all of their class work and homework, demonstrate respectful behavior, and have no unexcused absences.

SCHOOLS:

- Hamilton Elementary/Middle School*
- Mount Royal Elementary/Middle School
- Roland Park Elementary/Middle School

GATEWAY TO TECHNOLOGY: PROJECT LEAD THE WAY

This Career and Technology Education program offers middle school students the opportunity to explore engineering through a challenging, engaging, project-based program that includes a rigorous academic curriculum. The program is divided into units that focus on design, modeling, and robotics.

SCHOOLS:

- Baltimore IT Academy
- Booker T. Washington Middle School
- Calverton Elementary/Middle School*
- Cherry Hill Elementary/Middle School*
- City Springs Elementary/Middle School*
- Coldstream Park Elementary/Middle School*
- Cross Country Elementary/Middle School
- Curtis Bay Elementary/Middle School*
- Friendship Academy of Engineering and Technology
- Glenmount Elementary/Middle School*
- Harlem Park Elementary/Middle School*
- Hazelwood Elementary/Middle School*
- Leith Walk Elementary/Middle School*
- The Mount Washington School*
- National Academy Foundation
- Roland Park Elementary/Middle School
- Waverly Elementary/Middle School

**This school does not participate in middle school choice.*



MORE ABOUT HIGH SCHOOL CHOICE



P-TECH

“I chose P-TECH at Dunbar because it is a great opportunity that allows students to plan and take action on their future now instead of later. It’s a positive program that gives students all the tools for success.”

—Hassan, P-TECH at Dunbar

STUDENTS NOW ENROLLED AT MIDDLE/HIGH SCHOOLS

All City Schools 8th-grade students choose their high school. If your current school also offers 9th grade, you will be accepted automatically into your school if you list it as your first choice or if you list it as one of your five choices and are not accepted into a school ranked higher on your list.

OPPORTUNITIES FOR COLLEGE CREDIT

DUAL ENROLLMENT

Students at all high schools have the opportunity to earn college credits tuition free while working toward their high school diplomas through partnerships with Baltimore City Community College and other local institutions. Students interested in these opportunities should see their school counselors for assistance with the application process.

PATHWAYS IN TECHNOLOGY EARLY COLLEGE HIGH SCHOOLS (P-TECH)

P-TECH is a unique school model for students interested in a career in technology. Students commit to a six-year program during which they complete high school, earn an associate in arts degree from Baltimore City Community College tuition free, and have first consideration for a job with an industry-leading partner and an average starting salary of \$50,000.

During their time in the program, students will prepare for jobs of the future through mentorships with industry partners and summer employment opportunities and by earning industry certifications.

City Schools has two P-TECH programs: P-TECH Carver focuses on information technology; P-TECH Dunbar focuses on technology and health sciences (see pages 30 and 34).

BARD HIGH SCHOOL EARLY COLLEGE

At Bard High School Early College (page 30), students are taught by college faculty in undergraduate seminars and receive college credits up to an associate in arts degree tuition free from Bard College, while they also work toward a high school diploma.

ADVANCED PLACEMENT

These courses provide rigorous, college-level content, and successful completion and passing of the final AP exam can result in college credit.

SCHOOLS (IN 2016-17):

- Augusta Fells Savage Institute of Visual Arts
- Baltimore City College
- Baltimore Design School
- Baltimore Polytechnic Institute
- Baltimore School for the Arts
- Benjamin Franklin High School at Masonville Cove
- Bluford Drew Jemison STEM Academy West
- Carver Vocational-Technical High School
- ConneXions: A Community Based Arts School
- Coppin Academy
- Digital Harbor High School
- Edmondson-Westside High School
- Forest Park High School
- Frederick Douglass High School
- KASA
- Mergenthaler Vocational-Technical High School
- National Academy Foundation
- Northwestern High School
- Patterson High School
- Paul Laurence Dunbar High School
- The REACH! Partnership School
- Reginald F. Lewis High School
- Renaissance Academy
- Vivien T. Thomas Medical Arts Academy
- Western High School

Although these offerings may change in 2017-18, specific courses offered in the current school year (2016-17) at each school can be found online at www.baltimorecityschools.org/choice.

SPECIAL ACADEMIC PROGRAMMING

CAREER RESEARCH AND DEVELOPMENT

Prepares students with the academic, technical, and workplace skills necessary to seek further education and employment in a career field of their interest upon graduation, with two in-school courses, a portfolio development project, and a work-based learning experience.

SCHOOLS:

- Achievement Academy at Harbor City High School*
- Benjamin Franklin High School at Masonville Cove
- Excel Academy at Francis M. Wood High School*
- Friendship Academy of Engineering and Technology
- KASA
- National Academy Foundation
- The REACH! Partnership School
- Vivien T. Thomas Medical Arts Academy

JUNIOR RESERVE OFFICERS' TRAINING CORPS (JROTC)

JROTC provides high-quality leadership education that develops students' understanding of leadership skills, strong moral character, and self-discipline. The program provides students with a variety of intellectual, physical, and social experiences that encourage them to become leaders, critical thinkers, and productive members of society.

JROTC is dedicated to creating leaders who will serve their nation as productive citizens. It is not military training or a recruiting organization.

SCHOOLS (IN 2016-17):

- Baltimore Polytechnic Institute
- Carver Vocational-Technical High School
- Excel Academy at Francis M. Wood High School*
- Forest Park High School
- Frederick Douglass High School
- New Era Academy
- Mergenthaler Vocational-Technical High School
- Northwestern High School
- Patterson High School
- The REACH! Partnership School

INGENUITY PROJECT

See page 5 for a description of this mathematics and science program currently offered at the high school level at Baltimore Polytechnic Institute. Acceptance requires a separate application, and students admitted at the high school level must also select and be accepted to attend Baltimore Polytechnic Institute, a school with entrance criteria.

**Students are placed in this school by referral.
Call 443-984-2000 for information.*

INTERNATIONAL BACCALAUREATE DIPLOMA PROGRAMME

This challenging two-year curriculum, currently offered at Baltimore City College (see page 29), encourages students to ask challenging questions, develop a strong sense of their own identity and culture, and develop the ability to communicate with and understand people from other countries and cultures.



JROTC

“My most memorable moment in JROTC was when I went rappelling for the first time with my class. I was scared but my instructor helped me overcome my fear and I successfully rappelled down the 30-foot wall. It was a good feeling and I was very proud of myself.”

—Donya, Frederick Douglass High School

CAREER PREPARATION

Career and Technology Education (CTE) programs give you the opportunity to graduate from high school with the skills, experience, and certification you need to jump into a work-study program in your field, start a paid apprenticeship, or make yourself stand out in college or job applications. Plus, you'll get a chance to work hands-on in state-of-the-art labs and use professional equipment, meet and learn

from industry professionals, and have access to internships.

CTE programs are offered at many schools, but each school may not offer all possible courses within a pathway. Check the individual school profile pages online at www.baltimorecityschools.org/choice for more information.



ARTS, MEDIA, AND COMMUNICATION

“My CTE program has created a lot of opportunities for me, like giving me the chance to network with a variety of people in the media industry.”

—Tamia, Edmondson-Westside High School

Explore: Graphic design, web design, interactive media production, game development, and music production

■ SCHOOLS

- Augusta Fells Savage Institute of Visual Arts
- Baltimore Design School
- Carver Vocational-Technical High School
- Digital Harbor High School
- Edmondson-Westside High School
- Frederick Douglass High School
- Friendship Academy of Engineering and Technology
- Mergenthaler Vocational-Technical High School
- Northwestern High School
- Patterson High School



BUSINESS, MANAGEMENT, AND FINANCE

“During my time in the program, I’ve learned how to manage my money. I’m even holding my own account with MECU!”

—Asia, Reginald F. Lewis High School

Explore:
Finance, accounting, marketing, and business management

■ SCHOOLS

- Carver Vocational-Technical High School
- Edmondson-Westside High School
- Forest Park High School
- Friendship Academy of Engineering and Technology
- Mergenthaler Vocational-Technical High School
- National Academy Foundation
- Patterson High School
- Reginald F. Lewis High School

Explore: *Carpentry, electrical work, masonry, plumbing, heating ventilation and air conditioning (HVAC), and Computer-Aided Drafting and Design (CADD)*

■ SCHOOLS

- Augusta Fells Savage Institute of Visual Arts
- Baltimore Design School
- Benjamin Franklin High School at Masonville Cove
- Carver Vocational-Technical High School
- Edmondson-Westside High School
- Green Street Academy
- Mergenthaler Vocational-Technical High School
- Patterson High School
- The REACH! Partnership School

CONSTRUCTION AND DEVELOPMENT

“In carpentry, you learn how to build and fix houses. You can’t find one person in Baltimore who doesn’t need work on their house. So I know in this town, I’m going to be busy my whole life.”

—DeShone, Carver Vocational-Technical High School



CAREER PREPARATION

CONSUMER SERVICES, HOSPITALITY, AND TOURISM

“I can express my feelings by making food and catering for other people, and hopefully they’ll like it. One of the most memorable moments was when we cater for children at Great Kids Farm each year.”

**—Nahja,
Forest Park High School**



Explore: *Cooking, baking, fashion design, restaurant management, hotel management, and cosmetology*

■ SCHOOLS

- Baltimore Design School
- Carver Vocational-Technical High School
- Edmondson-Westside High School
- Forest Park High School
- Mergenthaler Vocational-Technical High School
- National Academy Foundation
- Patterson High School

Explore: *Agriculture, food safety, sustainability and bio-technology*

■ SCHOOLS

- Benjamin Franklin High School at Masonville Cove
- Green Street Academy
- Reginald F. Lewis High School



ENVIRONMENTAL, AGRICULTURE, AND NATURAL RESOURCES

“The most memorable moment in the Agriculture Program was in my Animal Science course when we got to hatch baby chicks and breed rabbits.”

**—Kamonté,
Benjamin Franklin High School
at Masonville Cove**



HEALTH AND BIOSCIENCES

“My favorite moment in the program so far was when we worked with the fire department over the summer. We got to do hands-on EMT activities with students from other schools and made friends with them.”

—Aryon, Vivien T. Thomas Medical Arts Academy

Explore: Dentistry, nursing, pharmaceuticals, and lab work

■ SCHOOLS

- Bluford Drew Jemison STEM Academy West
- Edmondson-Westside High School
- Green Street Academy
- Mergenthaler Vocational-Technical High School
- Patterson High School
- Paul Laurence Dunbar High School
- The REACH! Partnership School
- Vivien T. Thomas Medical Arts Academy
- Western High School

HUMAN RESOURCE SERVICES

“As part of the program, we were able to volunteer for the Special Olympics. We interacted and helped students with disabilities as they participated in games and activities. It really showed me some of the characteristics of being a good teacher and the important role teachers have.”

—Karina, Western High School

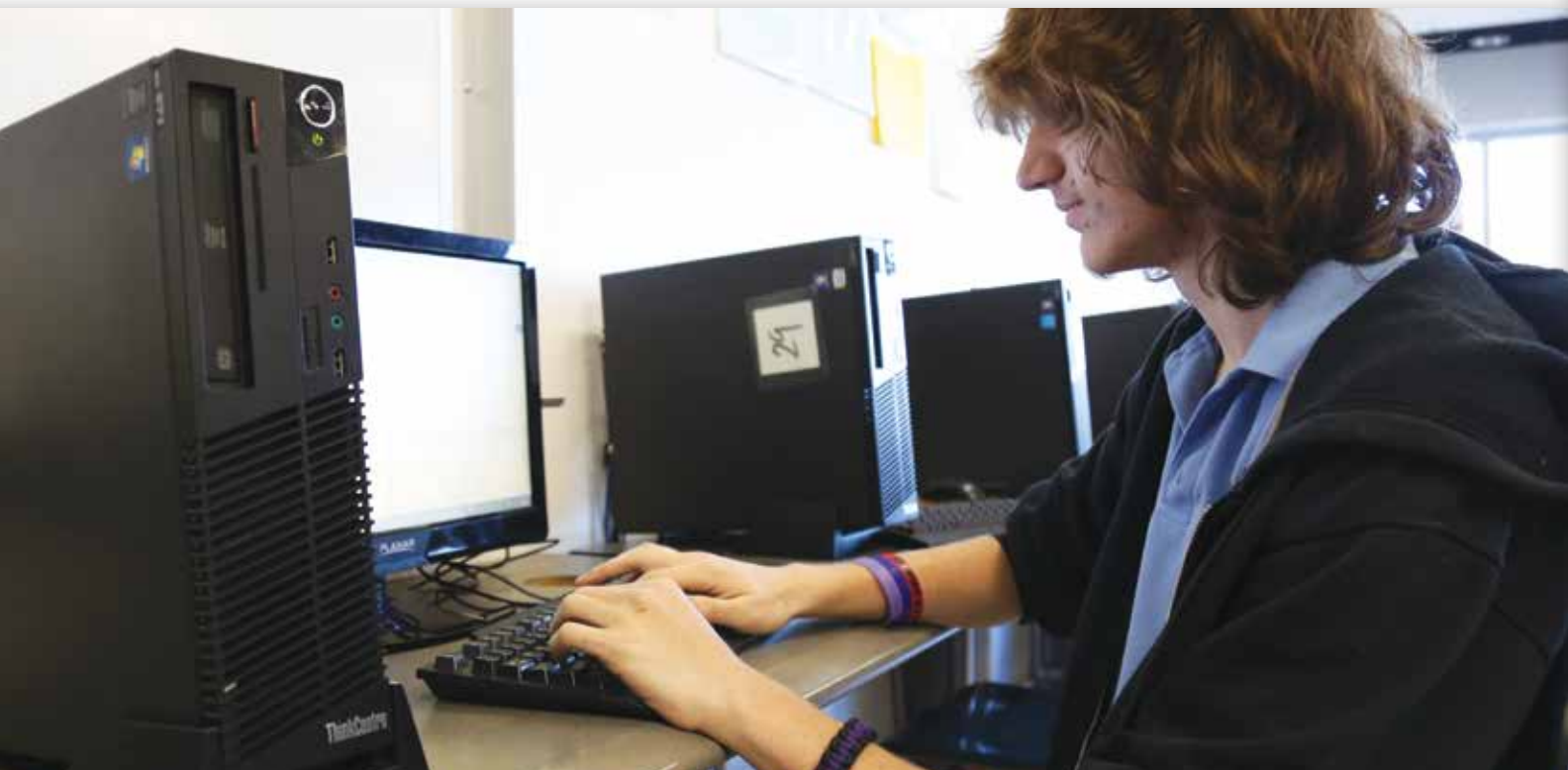


Explore: Homeland security, law, firefighting, EMT, childcare/early childhood education, and teaching

■ SCHOOLS

- | | | |
|--|---|--|
| <ul style="list-style-type: none"> • Carver Vocational-Technical High School • Digital Harbor High School • Edmondson-Westside High School • Forest Park High School • Frederick Douglass High School | <ul style="list-style-type: none"> • Friendship Academy of Engineering and Technology • KASA • Mergenthaler Vocational-Technical High School • National Academy Foundation • Northwestern High School • Patterson High School | <ul style="list-style-type: none"> • Paul Laurence Dunbar High School • Reginald F. Lewis High School • Renaissance Academy • Vivien T. Thomas Medical Arts Academy • Western High School |
|--|---|--|

CAREER PREPARATION



INFORMATION TECHNOLOGY

“We actually do hands-on coding instead of just notetaking. We work in groups and pairs to combine our strengths and weaknesses together to problem solve. I got so excited when I found out that we were actually running code and programming!”

—Nicholas, Digital Harbor High School

Explore: Networking, IT support, web development, cybersecurity, computer science, Cisco, and Oracle

■ SCHOOLS

- Academy for College and Career Exploration
- Augusta Fells Savage Institute of Visual Arts
- Bluford Drew Jemison STEM Academy West
- Carver Vocational-Technical High School
- Digital Harbor High School
- Edmondson-Westside High School
- Mergenthaler Vocational-Technical High School
- National Academy Foundation
- New Era Academy
- Northwestern High School
- Western High School



MANUFACTURING, ENGINEERING, AND TECHNOLOGY

“Everything is project-based and it’s not just bookwork. Like in the digital electronics class, we’ve learned about how basic electronics that we use every day are made.”

—Mavi, Baltimore Polytechnic Institute

Explore: Product manufacturing, civil engineering, and computer science

■ SCHOOLS

- Baltimore Leadership School for Young Women
- Baltimore Polytechnic Institute
- Bluford Drew Jemison STEM Academy West
- Carver Vocational-Technical High School
- Coppin Academy
- Digital Harbor High School
- Edmondson-Westside High School
- Friendship Academy of Engineering and Technology
- Mergenthaler Vocational-Technical High School
- National Academy Foundation
- Patterson High School
- Western High School

Explore: Auto mechanics, collision repair, and seagoing

■ SCHOOLS

- Edmondson-Westside High School
- Forest Park High School
- Mergenthaler Vocational-Technical High School
- New Era Academy

TRANSPORTATION TECHNOLOGIES

“My goal is to paint 18-wheeler trucks and know how to fix them too. There is even more money in that part of the trade!”

—Olen, Mergenthaler Vocational-Technical High School



ADDITIONAL INFORMATION

STUDENTS WITH DISABILITIES

It is the policy of City Schools that all students be given equal access and opportunity to participate in all educational programs (in accordance with the requirements of Section 504 of the Rehabilitation Act of 1973, the Americans with Disabilities Act of 1990, the Perkins Act of 1998, and the Individuals with Disabilities Education Act of 2004). All students are provided the same opportunity to apply for entrance into City Schools middle and high schools and programs without regard to disability.

The only exception for students with disabilities occurs based on documented student need within the Individualized Education Program (IEP) for a citywide special education program, nonpublic school, or separate public day school. IEP teams will work collaboratively with appropriate school-based staff to ensure that students with disabilities receive all necessary support through the middle and high school choice process.

STUDENTS WHO ARE NOT CURRENTLY ENROLLED AT CITY SCHOOLS

Students who are not currently enrolled at City Schools can obtain a copy of the choice application online at www.baltimorecityschools.org/choice or from City Schools' district office (200 E. North Avenue, Room 106, Baltimore, MD 21202). They can also call 443-984-2000 with any questions about how school choice works.

When the choice application is submitted, it should be accompanied by the student's birth certificate and two proofs of address (additional proofs of address may be requested). A list of documents that can serve as proof is posted at the website address noted above. If the student currently attends a school that does not administer standardized tests, the student must take the i-Ready achievement tests. Appointments for testing can be scheduled by calling 443-984-2000.

Students who do not live in Baltimore City (or those whose applications do not include acceptable documentation of proof of Baltimore City residence), are considered for placement in a Baltimore City public school after eligible Baltimore City residents are placed. This policy applies to all schools, including charter schools, entrance criteria schools, and schools that conduct a choice lottery. Please note that nonresident students must pay tuition.

The choice application should be submitted to the district office (address above) by the January 20, 2017 deadline.

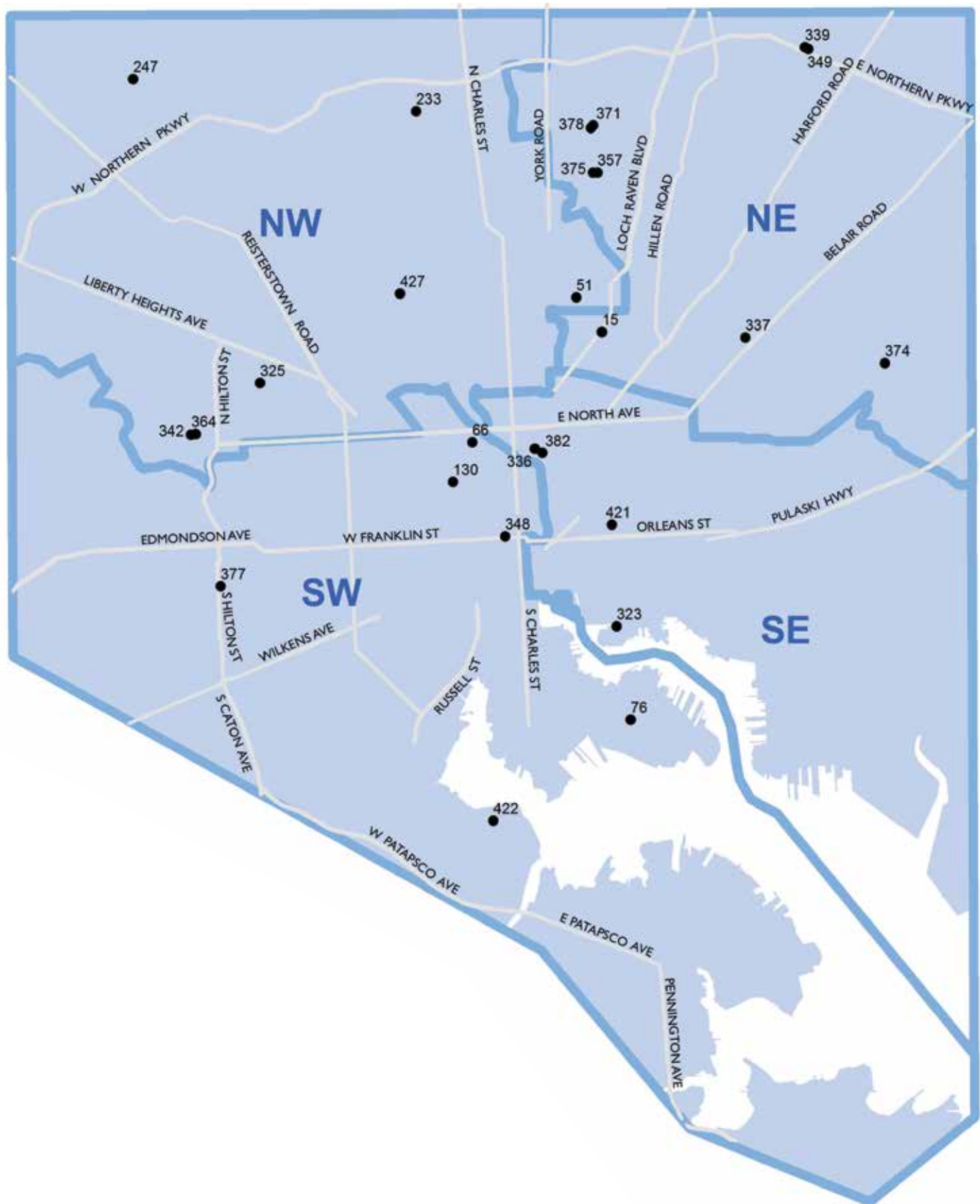




MIDDLE SCHOOL OPTIONS AT A GLANCE

SCHOOL NAME	SCHOOL NO.	TYPE	ADMISSION	CTE	PAGE
NORTHWEST					
Academy for College and Career Exploration*	427	MH	Choice lottery	Yes	25
Bluford Drew Jemison STEM Academy West	364	MH	Choice lottery	Yes	25
ConneXions: A Community Based Arts School	325	MH	Choice lottery	No	26
Cross Country Elementary/Middle School	247	EM	Neighborhood; entrance criteria (Advanced Academics)	Yes	21
Roland Park Elementary/Middle School	233	EM	Neighborhood; entrance criteria (Advanced Academics); specialized (Ingenuity Project)	Yes	22
NORTHEAST					
Afya Public Charter School	337	M	School-based lottery	No	23
Baltimore Collegiate School for Boys	375	M	School-based lottery	No	21
Baltimore IT Academy	378	M	Choice lottery	Yes	23
Banneker Blake Academy for Arts and Sciences	357	M	Choice lottery	No	23
Friendship Academy of Engineering and Technology	339	MH	Choice lottery	Yes	26
Lillie May Carroll Jackson School	371	EM	School-based lottery	No	22
NACA Freedom and Democracy Academy II	349	MH	Choice lottery	No	27
Stadium School	15	M	Choice lottery	No	24
Vanguard Collegiate Middle School	374	M	Choice lottery	No	24
Waverly Elementary/Middle School	51	EM	Neighborhood; entrance criteria (Advanced Academics)	Yes	22
SOUTHWEST					
Baltimore Leadership School for Young Women	348	MH	School-based lottery	Yes	25
Booker T. Washington Middle School	130	M	Choice lottery	Yes	23
Francis Scott Key Elementary/Middle School	76	EM	Neighborhood; entrance criteria (Advanced Academics)	No	21
Green Street Academy	377	MH	School-based lottery	Yes	26
KASA	342	MH	Choice lottery	Yes	26
Mount Royal Elementary/Middle School	66	EM	Neighborhood; entrance criteria (Advanced Academics); specialized (Ingenuity Project)	No	22
New Era Academy	422	MH	Choice lottery	Yes	27
SOUTHEAST					
Baltimore Design School	382	MH	Choice lottery (middle); specialized (high)	Yes	25
Baltimore Montessori Public Charter Middle School	336	EM	School-based lottery	No	21
The Crossroads School	323	M	School-based lottery	No	24
National Academy Foundation	421	MH	Choice lottery (middle); specialized (high)	Yes	27
KEY: EM = Elementary/Middle M = Middle MH = Middle/High					

*This school will be at a temporary location for the 2017-18 school year. See page 25 for more information.

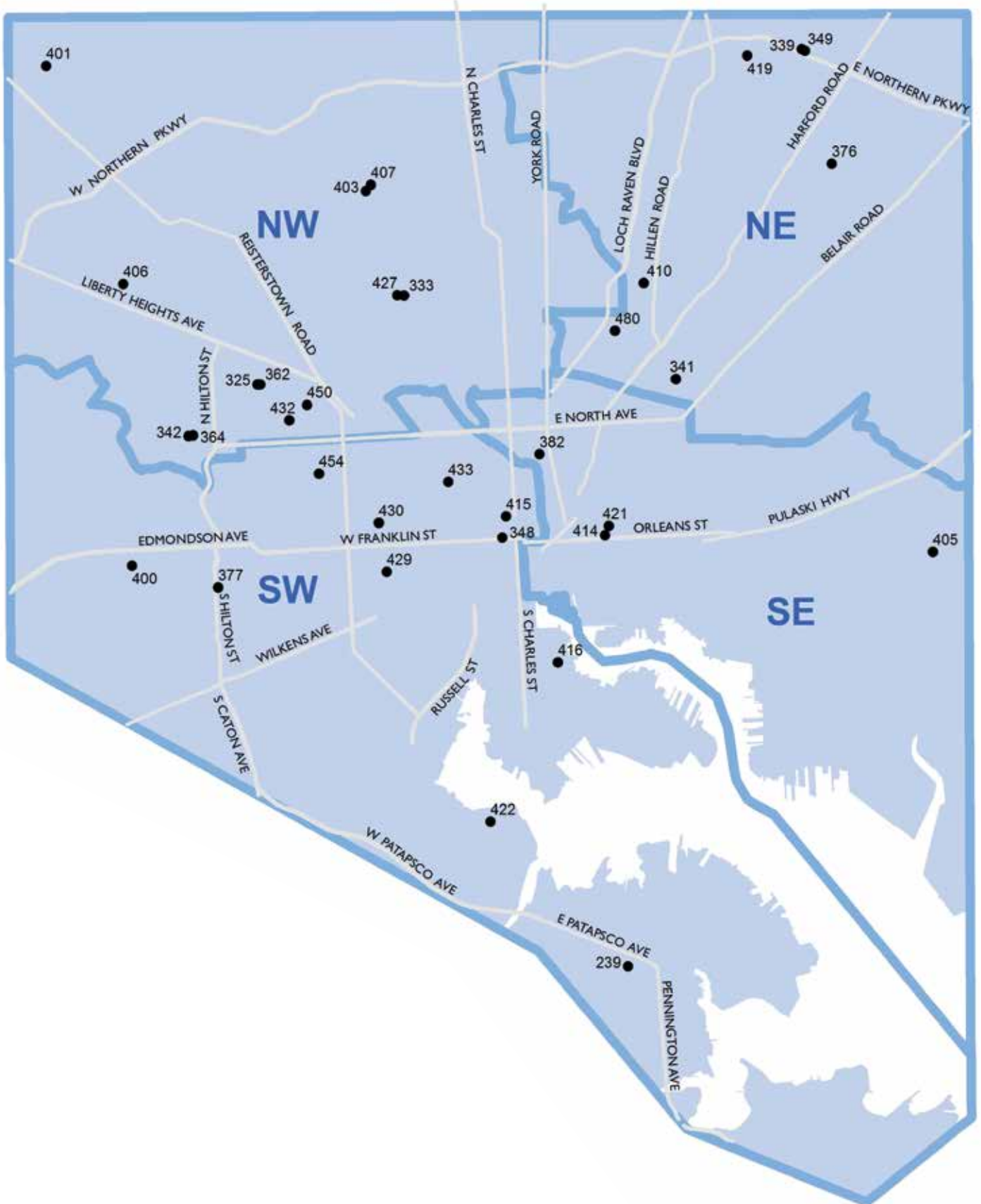


HIGH SCHOOL OPTIONS AT A GLANCE

SCHOOL NAME	SCHOOL NO.	TYPE	ADMISSION	CTE	QUADRANT	PAGE
Academy for College and Career Exploration	427	MH	Choice lottery	Yes	NW	25
Augusta Fells Savage Institute of Visual Arts	430	H	Choice lottery	Yes	SW	29
Baltimore City College	480	H	Entrance criteria	No	NE	29
Baltimore Design School	382	MH	Choice lottery (middle); specialized (high)	Yes	SE	25
Baltimore Leadership School for Young Women	348	MH	School-based lottery	Yes	SW	25
Baltimore Polytechnic Institute	403	H	Entrance criteria; specialized (Ingenuity)	Yes	NW	29
Baltimore School for the Arts	415	H	Specialized	No	SW	29
BARD High School Early College	362	H	Choice lottery	No	NW	30
Benjamin Franklin High School at Masonville Cove	239	H	Choice lottery	Yes	SW	30
Bluford Drew Jemison STEM Academy West	364	MH	Choice lottery	Yes	NW	25
Carver Vocational-Technical High School	454	H	Entrance criteria	Yes	SW	30
City Neighbors High School	376	H	School-based lottery	No	NE	31
ConneXions: A Community Based Arts School	325	MH	Choice lottery	No	NW	26
Coppin Academy	432	H	School-based lottery	Yes	NW	31
Digital Harbor High School	416	H	Choice lottery	Yes	SW	31
Edmondson-Westside High School	400	H	Entrance criteria	Yes	NW	31
Forest Park High School*	406	H	Choice lottery	Yes	NW	32
Frederick Douglass High School	450	H	Choice lottery	Yes	NW	32
Friendship Academy of Engineering and Technology	339	MH	Choice lottery	Yes	NE	26
Green Street Academy	377	MH	School-based lottery	Yes	SW	26
Independence School Local I High School*	333	H	Choice lottery	No	NW	33
KASA	342	MH	Choice lottery	Yes	SW	26
Mergenthaler Vocational-Technical High School	410	H	Entrance criteria	Yes	NE	33
NACA Freedom and Democracy Academy II	349	MH	Choice lottery	No	NE	27
National Academy Foundation	421	MH	Choice lottery (middle); specialized (high)	Yes	SE	27
New Era Academy	422	MH	Choice lottery	Yes	SW	27
Northwestern High School	401	H	Choice lottery	Yes	NW	33
Patterson High School	405	H	Choice lottery	Yes	SE	33
Paul Laurence Dunbar High School	414	H	Entrance criteria	Yes	SE	34
P-TECH at Carver		H	Specialized	Yes	SW	30
P-TECH at Dunbar		H	Specialized	Yes	SE	34
The REACH! Partnership School	341	H	Choice lottery	Yes	NE	34
Reginald F. Lewis High School	419	H	Choice lottery	Yes	NE	35
Renaissance Academy	433	H	Choice lottery	Yes	SW	35
Vivien T. Thomas Medical Arts Academy	429	H	Choice lottery	Yes	SW	36
Western High School	407	H	Entrance criteria	Yes	NW	36

KEY: MH = Middle/High | H= High

*This school will be at a temporary location for the 2017-18 school year. See individual profile pages for more information.





SCHOOL PROFILES

To learn more about specific schools, browse through the middle and high school options on the next pages of this guide. And don't miss **www.baltimorecityschools.org/choice**, where you'll find more details about each school, including links to individual school websites.

Remember that programs may change. So before submitting your choice application, check **www.baltimorecityschools.org/choice** or ask your school choice liaison if there may be changes at any of the schools you are considering.

ELEMENTARY/MIDDLE SCHOOL | SCHOOL OPTIONS

BALTIMORE COLLEGIATE SCHOOL FOR BOYS #375

1101 Winston Avenue • Northeast quadrant
443-642-5320 • Serves grades 4 to 8

Baltimore Collegiate rigorously prepares male students for success in college and life through a traditional liberal arts curriculum in the humanities, math, science, and the arts. We offer high academic standards and support for each student's intellectual, social, and personal development. Character education helps a Collegiate student form sound habits of mind and action.

Program Highlights >

All-male student body; college-preparatory focus; middle school Latin; interscholastic sports

TO APPLY, contact the school.

This school is exploring a move to a new permanent location for the 2017-18 school year.

BALTIMORE MONTESSORI PUBLIC CHARTER MIDDLE SCHOOL #383

1600 Guilford Avenue • Southeast quadrant
410-528-5393 • Serves grades pre-k to 8

Baltimore Montessori Public Charter School's middle grades program responds to the unique developmental needs of young adolescents by anchoring meaningful academic study in a real-world context. The challenging and engaging curriculum prepares students for high school and beyond while supporting community engagement and promoting lifelong learning. In addition to core subjects, students' course of study includes culinary and visual arts, as well as opportunities for service learning and student-led businesses.

Program Highlights >

Montessori program

TO APPLY, contact the school.



CROSS COUNTRY ELEMENTARY/MIDDLE SCHOOL #247

6100 Cross Country Boulevard • Northwest quadrant
410-396-0602 • Serves pre-k to grade 8

Cross Country develops students' special talents with honors programming, academic coaching, and enrichment in areas including STEM (science, technology, engineering, and mathematics) and language arts. Cross Country is an official green school, and students are involved with numerous environmental projects throughout the year.

Program Highlights >

Advanced Academics; CTE (Gateway to Technology); English for Speakers of Other Languages (ESOL) program; intramural sports; Gifted and Advanced Learning

TO APPLY for Advanced Academics, fill out the 2017-18 choice application (minimum 355 composite score required).

FRANCIS SCOTT KEY ELEMENTARY/MIDDLE SCHOOL #76

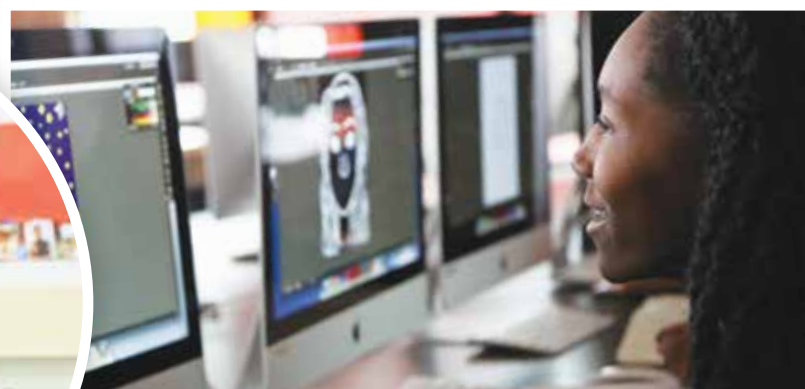
1425 E. Fort Avenue • Southwest quadrant
410-396-1503 • Serves pre-k to grade 8

Francis Scott Key offers state-of-the-art STEM programming in new labs, an innovative engineering design program, and rigorous classes in English, math, science, and social studies. Our staff makes learning fun, sparking imagination and encouraging self-expression.

Program Highlights >

Advanced Academics; intramural sports; Gifted and Advanced Learning

TO APPLY for Advanced Academics, fill out the 2017-18 choice application (minimum 355 composite score required).



SCHOOL OPTIONS | ELEMENTARY/MIDDLE SCHOOL

LILLIE MAY CARROLL JACKSON SCHOOL #371

900 Woodbourne Avenue • Northeast quadrant
443-320-9499 • Serves grades 5 to 8

At Lillie May Carroll Jackson School (named for the pioneer civil rights activist), girls pursue rigorous course work, high-quality fieldwork experiences, and character and leadership development. We are an expeditionary learning school, engaging students as self-motivated learners who find joy in learning and graduate with the academic knowledge, critical thinking skills, and problem-solving capacity to succeed.

Program Highlights >

All-female student body; CTE (Gateway to Technology); after-school clubs

TO APPLY, contact the school.

MOUNT ROYAL ELEMENTARY/MIDDLE SCHOOL #66

121 McMechen Street • Southwest quadrant
410-396-0864 • Serves pre-k to grade 8

Mount Royal provides a safe and positive learning environment where students experience an arts-infused curriculum that fosters perseverance to excel in higher education, careers, and beyond. We offer various clubs and activities including basketball, coach class, and learning club. We offer aftercare and have many partners, including MICA, University of Baltimore, Park Cafe, and Brown Memorial Church.

Program Highlights >

Advanced Academics; Ingenuity Project; arts integration with music, visual arts, dance, and theater; intramural sports; Gifted and Advanced Learning

TO APPLY for Advanced Academics, fill out the 2017-18 choice application (minimum 355 composite score required). To apply for the Ingenuity Project, contact the Ingenuity Project (see page 5).

ROLAND PARK ELEMENTARY/MIDDLE SCHOOL #233

5207 Roland Avenue • Northwest quadrant
410-396-6420 • Serves pre-k to grade 8

Teaching and learning at Roland Park provide a positive, engaging, and challenging environment for creative and critical thinking.

Program Highlights >

Advanced Academics; Ingenuity Project; CTE (Gateway to Technology); English for Speakers of Other Languages (ESOL) program; arts integration; academic clubs (robotics, debate, etc.); after-school clubs; Gifted and Advanced Learning

TO APPLY for Advanced Academics, fill out the 2017-18 choice application (minimum 355 composite score required). To apply for the Ingenuity Project, contact the Ingenuity Project (see page 5).

WAVERLY ELEMENTARY/MIDDLE SCHOOL #51

3400 Ellerslie Avenue • Northeast quadrant
410-396-6394 • Serves pre-k to grade 8

Waverly's mission is to prepare 21st-century learners and leaders with high expectations to soar to excellence in college and careers. We offer a full range of academic, enrichment, extracurricular, and athletic programs. Our new building, opened in January 2014, provides an ideal environment for learning.

Program Highlights >

Advanced Academics; CTE (Gateway to Technology); English for Speakers of Other Languages (ESOL) program; community school; intramural sports; Gifted and Advanced Learning

TO APPLY, for Advanced Academics, fill out the 2017-18 choice application (minimum 355 composite score required).

AFYA PUBLIC CHARTER SCHOOL #337

2800 Brendan Avenue • Northeast quadrant
410-485-2102 • Serves grades 6 to 8

Afya Public Charter School prepares students for success in high school and beyond by pairing rigorous, engaging instruction with an advisory program and opportunities for physical activity. Our experienced and caring educators are committed to teaching the whole child, and our standards-based curriculum is differentiated to meet the needs of each student. Afya also teaches habits of a healthy lifestyle.

Program Highlights >

Foreign language instruction and cultural clubs; fitness; community school; intramural sports

TO APPLY, contact the school.

BALTIMORE IT ACADEMY #378

900 Woodbourne Avenue • Northeast quadrant
443-642-2067 • Serves grades 6 to 8

We are Baltimore IT Academy, home of the Tigers, where we prepare, empower, and inspire all students to apply the knowledge, attitudes, and skills to compete in a 21st-century global society. Our vision is to be the premier middle school in Baltimore City that fosters technological literacy, rigorous academic achievement, innovation, collaboration, and creative problem-solving for our 21st-century scholars.

Program Highlights >

CTE (Gateway to Technology); intramural sports; community school

TO APPLY, fill out the 2017-18 choice application.

As part of the district's annual review of school programs and buildings, the Board of School Commissioners is considering a recommendation to close this school as of June 2017.



BANNEKER BLAKE ACADEMY FOR ARTS AND SCIENCES #357

1101 Winston Avenue • Northeast quadrant
443-642-5420 • Serves grade 6 to 8

Banneker Blake Academy provides a relevant and rigorous curriculum that nurtures the talents of male students and prepares them for high school, college, and career. Students attend school six days a week, with an extended day Monday to Friday, along with summer programming. The extended day is enriched with meals, study hall, tutoring, academic coaching, and mentoring.

Program Highlights >

All-male student body; STEAM focus (science, technology, engineering, arts, and math); extended day

TO APPLY, fill out the 2017-18 choice application.

This school is exploring a move to a new permanent location for the 2017-18 school year.

BOOKER T. WASHINGTON MIDDLE SCHOOL #130

1301 McCulloh Street • Southwest quadrant
410-396-7734 • Serves grades 6 to 8

With the support of the entire school community, we are realizing our vision of providing rigorous instruction and authentic art experiences in a restorative setting. Booker T. Washington Middle School offers visual arts, choir, music, and dance daily. Our school is rich in history, with alumni including Thurgood Marshall, Cab Calloway, and Senator Verna Jones-Rodwell.

Program Highlights >

Arts focus; CTE (Gateway to Technology); community school; intramural sports

TO APPLY, fill out the 2017-18 choice application.

SCHOOL OPTIONS | MIDDLE SCHOOL

THE CROSSROADS SCHOOL #323

802 S. Caroline Street • Southeast quadrant
410-276-4924 • Serves grades 6 to 8

Crossroads is for children of character, integrity, and perseverance. It is a place for families who are deeply involved in their children's education. Crossroads provides students who commit to quality in their academics and show no excuses in their daily lives with the opportunity to learn the skills that will allow them to gain entrance into top high schools.

Program Highlights >

Extended-day and summer programming; intramural sports

TO APPLY, contact the school.

STADIUM SCHOOL #15

1300 Gorsuch Avenue • Northeast quadrant
443-984-2682 • Serves grades 6 to 8

Stadium School, located in the Coldstream-Homestead-Montebello community, takes pride in providing students with a structured academic program, exciting extracurricular activities, and meaningful, real-life learning experiences. Students, staff, families, and the community work collaboratively to ensure that our students are prepared for college and careers.

Program Highlights >

Black history studies; intramural sports

TO APPLY, fill out the 2017-18 choice application.

VANGUARD COLLEGIATE MIDDLE SCHOOL #374

5000 Truesdale Avenue • Northeast quadrant
443-642-2069 • Serves grades 6 to 8

Vanguard is a college-preparatory middle school with a unique program to ensure achievement through advisory, enrichment, and remediation. School leaders, parents, and students work collaboratively to create engaging opportunities to develop the whole child.

Program Highlights >

Arts-infused curriculum; English for Speakers of Other Languages (ESOL) program; intramural sports

TO APPLY, fill out the 2017-18 choice application.



MIDDLE/HIGH SCHOOL | SCHOOL OPTIONS

ACADEMY FOR COLLEGE AND CAREER EXPLORATION #427

2801 Saint Lo Drive • Northeast quadrant
410-396-7607 • Serves grades 6 to 12

ACCE prepares students for college and success in 21st-century careers. We provide excellence and accessibility in instruction, climate, and culture, along with social and emotional supports for students. ACCE inspires students to develop a love of learning, a positive direction in their lives, and a belief in their own abilities through real-world learning experiences.

Program Highlights >

CTE (pathway in Information Technology); English for Speakers of Other Languages (ESOL) program; varsity and intramural sports

TO APPLY, fill out the 2017-18 choice application.

For 2017-18, this school is located temporarily at the address noted above while its permanent building, located at 1300 W. 36th Street, is renovated as part of the 21st-Century School Buildings Plan. At the temporary location, this school is colocated with The REACH! Partnership School. At its permanent location, it will be colocated with Independence School Local I High School.

BALTIMORE DESIGN SCHOOL #382

1500 Barclay Street • Southeast quadrant
443-642-2311 • Serves grades 6 to 12

Baltimore Design School provides rigorous academics and a unique design education program. The middle school program focuses on building a strong art and design education foundation. The high school program allows students to study their choice of fashion, architecture, or graphic design in depth after exposure to all three design tracks during freshman year.

Program Highlights >

AP courses; CTE (pathways in Arts, Media, and Communication; Construction and Development; and Consumer Services, Hospitality, and Tourism); design/arts-integration approach; collaborative, interdisciplinary teaching; career preparation in fashion design, architecture, or graphic design; Gifted and Advanced Learning

TO APPLY to the middle school, fill out the 2017-18 choice application. To apply to the high school, contact the school (portfolio submission required).

BALTIMORE LEADERSHIP SCHOOL FOR YOUNG WOMEN #348

128 W. Franklin Street • Southwest quadrant
443-642-2048 • Serves grades 6 to 12

BLSYW prepares students for success in college and life. BLSYW engages young women in learning through a strong academic culture and innovative teaching practices, and cultivates self-confidence, individuality, and a strong sense of community responsibility.

Program Highlights >

All-female student body; CTE (pathway in Manufacturing, Engineering, and Technology)

TO APPLY, contact the school.

BLUFORD DREW JEMISON STEM ACADEMY WEST #364

2000 Edgewood Street • Northwest quadrant
443-642-2110 • Serves grades 6 to 12

Bluford Drew Jemison STEM Academy provides an intellectually and academically rigorous college-preparatory education for 6th- to 12th-grade male students. We prepare our scholars academically with a focus on science, technology, engineering, and math, increasing their opportunities in college and career.

Program Highlights >

All-male student body; STEM focus; AP courses; CTE (pathways in Health and Biosciences; Information Technology; and Manufacturing, Engineering, and Technology); varsity sports

TO APPLY, fill out the 2017-18 choice application.



SCHOOL OPTIONS | MIDDLE/HIGH SCHOOL

CONNEXIONS: A COMMUNITY BASED ARTS SCHOOL #325

2801 N. Dukeland Street • Northwest quadrant
443-984-1418 • Serves grades 6 to 12

ConneXions cultivates students' academic and artistic excellence, cultural identity, and community awareness. Students interested in dance, West African percussion, visual arts, theater, martial arts, and media technology should explore our flourishing arts program. Small class sizes enable individualized attention from engaging educators and working artists to support high academic expectations. At ConneXions, students engage in performances and presentations that prepare them for personal and professional success.

Program Highlights >

AP courses; arts integration; intramural sports

TO APPLY, fill out the 2017-18 choice application.

During the 2017-18 school year, Independence School Local I will be colocated temporarily with this school.

FRIENDSHIP ACADEMY OF ENGINEERING AND TECHNOLOGY #339

2500 E. Northern Parkway • Northeast quadrant
443-642-5616 • Serves grades 6 to 12

FAET prepares students for careers in engineering, networking, software development, and architectural design in a safe, inclusive environment. FAET students graduate ready to enter post secondary education.

Program Highlights >

STEM focus; CTE (Gateway to Technology; Career Research and Development; pathways in Arts, Media, and Communication; Business, Management, and Finance; Human Resource Services; and Manufacturing, Engineering, and Technology); varsity and intramural sports

TO APPLY, fill out the 2017-18 choice application.

GREEN STREET ACADEMY #377

125 N. Hilton Street • Southwest quadrant
443-642-2068 • Serves grades 6 to 12

Green Street Academy ensures that every scholar succeeds. We train and support our teachers, staff, community members, partners, and scholars, so every learning experience is compellingly framed by our eco-sustainability mission. Our scholars graduate with skills to enter college or careers in the green workforce or other sectors of the economy.

Program Highlights >

Project-based learning; CTE (pathways in Environmental, Agriculture, and Natural Resources; Health and Biosciences; Construction and Development); intramural sports; student-based farm enterprise

TO APPLY, contact the school.

KASA (KNOWLEDGE AND SUCCESS ACADEMY) #342

2000 Edgewood Street • Southwest quadrant
443-642-2670 • Serves grades 6 to 12

KASA combines the best of a small, close-knit school, with personalized instruction and caring staff members, with all of the extracurricular activities, athletics, and opportunities typical of a larger school. Our students strive to put their best foot forward and to take advantage of every opportunity afforded them.

Program Highlights >

AP courses; CTE (Career Research and Development; pathway in Human Resource Services); varsity and intramural sports

TO APPLY, fill out the 2017-18 choice application.

NACA FREEDOM AND DEMOCRACY ACADEMY II #349

*2500 E. Northern Parkway • Northeast quadrant
443-642-2031 • Serves grades 6 to 12*

NACA is a college-preparatory school that offers rigorous academics, character development, and a peaceful school climate and culture. College and career pathways include Freedom and Democracy, The Sullivan Kids Health Club, The Victoria Gray Adams Government Club, and the art/architecture/music/drama tracks.

TO APPLY, fill out the 2017-18 choice application.

As part of the district's annual review of school programs and buildings, the Board of School Commissioners is considering a recommendation to renew the contract for the operator of this school for subsequent years.

NATIONAL ACADEMY FOUNDATION #421

*540 N. Caroline Street • Southeast quadrant
443-984-1594 • Serves grades 6 to 12*

At the National Academy Foundation, both our high school and our middle school programs focus on preparing students for college and careers. Students have the opportunity to graduate with industry certifications in a range of fields.

Program Highlights >

AP courses; CTE (Gateway to Technology; Career Research and Development; and pathways in Business, Management, and Finance; Consumer Services, Hospitality, and Tourism; Human Resource Services; Information Technology; and Manufacturing, Engineering, and Technology); English for Speakers of Other Languages (ESOL) program; varsity and intramural sports

TO APPLY to the middle school, fill out the 2017-18 choice application. To apply to the high school, fill out the 2017-18 choice application and contact the school to schedule an interview.

NEW ERA ACADEMY #422

*2700 Seamon Avenue • Southwest quadrant
443-984-2415 • Serves grades 6 to 12*

New Era Academy is a leadership school driven by parent and student voice, athletics, and academic achievement. Our mission is to seek scholars who are interested in college and career readiness through CTE, JROTC, and intermodal transportation pathways. One notable and unique program is the 4-course seagoing pathway that exposes students to a wealth of opportunities in seagoing careers through field trips, internships, work-based learning experiences, summer programs, and job placement assistance. Students who complete the program and receive credentials can have access to jobs with an average starting salary of \$35,000 per year. We look forward to having you join our community of leaders.

Program Highlights >

STEM focus; CTE (pathways in Information Technology and Transportation Technologies); Army JROTC; English for Speakers of Other Languages (ESOL) program; varsity and intramural sports

TO APPLY, fill out the 2017-18 choice application.





AUGUSTA FELS SAVAGE INSTITUTE OF VISUAL ARTS #430

1500 Harlem Avenue • Southwest quadrant
410-396-7701 • Serves grades 9 to 12

At Augusta Fells Savage Institute, we tap into students' potential and help them succeed academically, artistically, socially, and emotionally. Our mission is to prepare 21st-century leaders and learners in an arts-focused learning community where student achievement is the priority.

Program Highlights >

AP courses; CTE (pathways in Arts, Media, and Communication; Construction and Development; and Information Technology); varsity sports

TO APPLY, fill out the 2017-18 choice application.

As part of the district's annual review of schools and school buildings, the Board of School Commissioners is considering a recommendation to close this school as of June 2018.

BALTIMORE CITY COLLEGE #480

3220 The Alameda • Northeast quadrant
410-396-6557 • Serves grades 9 to 12

Baltimore City College is the nation's third oldest public high school. As an International Baccalaureate World School, City College offers a rigorous college-preparatory program that incorporates communication, intercultural awareness, and inquiry-based learning. Our school motto, *Palmam Qui Meruit Ferat* ("Honor to the one who earns it"), reflects our commitment to hard work and excellence. Graduates include Nobel Prize, Pulitzer Prize, and Emmy Award winners; elected officials; professional athletes; and prominent artists.

Program Highlights >

AP courses; International Baccalaureate; varsity and intramural sports

TO APPLY, fill out the 2017-18 choice application; a minimum 610 composite score is required.

BALTIMORE POLYTECHNIC INSTITUTE #403

1400 W. Cold Spring Lane • Northwest quadrant
410-396-7026 • Serves grades 9 to 12

Poly has a 133-year tradition of excellence, offering a full college-preparatory program with an emphasis on science, engineering, and mathematics. *Newsweek* has listed Poly among its top 500 high schools in the nation for low-income students. Poly is committed to ensuring that all students have access to college, and our graduates are highly sought after by colleges and universities.

Program Highlights >

AP courses; STEM focus; Ingenuity Project; college-preparatory programming and career preparation supports; CTE (pathway in Manufacturing, Engineering, and Technology); Air Force JROTC; English for Speakers of Other Languages (ESOL) program; varsity and intramural sports

TO APPLY, fill out the 2017-18 choice application; a minimum 610 composite score is required. To apply to the Ingenuity Project, fill out the 2017-18 choice application and contact the Ingenuity Project (see page 5).

BALTIMORE SCHOOL FOR THE ARTS #415

712 Cathedral Street • Southwest quadrant
443-642-5165 • Serves grades 9 to 12

BSA offers a pre-professional arts program (majors in dance, music, theater, and visual arts), taught by active professional artists, as well as a challenging college-preparatory academic program. The nature of our small school promotes mentoring relationships in arts and academic settings. Over 95% of BSA students attend college immediately after graduating, and at least 80% complete a bachelor's degree in six years.

Program Highlights >

AP courses; arts training with career preparation support services; partnerships with local arts organizations

TO APPLY, contact the school (audition required during the week of January 23, 2017).

SCHOOL OPTIONS | HIGH SCHOOL

BARD HIGH SCHOOL EARLY COLLEGE #362

2801 N. Dukeland Street • Northwest quadrant
443-642-2062 • Serves grades 9 to 12

Bard High School Early College Baltimore allows students to take a two-year, tuition-free college course of study in the liberal arts and sciences following the 9th and 10th grades. This makes it possible for students to earn both a high school diploma and up to 60 transferable college credits and an associate in arts degree from Bard College in four years.

Program Highlights >

Course of study that emphasizes critical thinking through writing, discussion, and inquiry; intramural sports

TO APPLY, fill out the 2017-18 choice application and contact the school to schedule an interview.

BENJAMIN FRANKLIN HIGH SCHOOL AT MASONVILLE COVE #239

1201 Cambria Street • Southwest quadrant
410-396-1373 • Serves grades 9 to 12

Ben Franklin engages students behaviorally, emotionally, and cognitively, preparing them to succeed in college and career. Ben Franklin serves as a model for community high schools in Baltimore City, with more than 75 partners who support us in meeting the needs of every student. Students can participate in a variety of internships and engage in hands-on learning in our CTE program.

Program Highlights >

AP courses; CTE (Career Research and Development; pathways in Construction and Development; and Environmental, Agriculture and Natural Resources); academic and career preparation support services; English for Speakers of Other Languages (ESOL) program; varsity and intramural sports; community school; on-site daycare

TO APPLY, fill out the 2017-18 choice application.

CARVER VOCATIONAL-TECHNICAL HIGH SCHOOL #454

2201 Presstman Street • Southwest quadrant
410-396-0553 • Serves grades 9 to 12

Carver, the oldest vocational school in Baltimore, challenges students with rigorous academic and career-focused courses that prepare them for college and the global workforce. Students can also participate in a range of athletic and extracurricular activities. The dedicated faculty grooms students to be responsible leaders who go on to make substantial contributions to society.

Program Highlights >

AP courses; CTE (pathways in Arts, Media, and Communication; Business, Management, and Finance; Construction and Development; Consumer Services, Hospitality and Tourism; Human Resource Services; Information Technology; and Manufacturing, Engineering, and Technology); Army JROTC; varsity and intramural sports; on-site daycare

TO APPLY, fill out the 2017-18 choice application; a minimum 475 composite score is required.

P-TECH AT CARVER

2201 Presstman Street • Southwest quadrant
443-642-3928 • Serves grades 9-12 and 2 years of college

Located within Carver High School, P-TECH, a unique six-year school model, focuses on information technology and has a partnership with IBM that allows students to work with leading professionals and acquire industry certifications, putting them on a path to employment. After six years, students graduate with both a high school diploma and a free two-year associate's degree in either cyber-security or computer information systems.

Program Highlights >

Unique six-year model; see page 6 for details

TO APPLY, call 443-642-3928.

CITY NEIGHBORS HIGH SCHOOL #376

5609 Sefton Avenue • Northeast quadrant
443-642-2119 • Serves grades 9 to 12

What would it take for every student to be known, loved, and inspired? City Neighbors works to answer that question. City Neighbors is project based and arts integrated, using a workshop model for instruction. Students immerse themselves in long-term, independent projects. In our unique, diverse advisory, students have independent work spaces, and complete activities to prepare themselves for college and careers after high school.

Program Highlights >

Advanced classes and electives based on students' interests; project-based learning; varsity sports

TO APPLY, contact the school.

COPPIN ACADEMY #432

2500 W. North Avenue • Northwest quadrant
410-951-2602 • Serves grades 9 to 12

Coppin Academy, located on Coppin State University's campus, is a college-preparatory charter high school whose vision is that all graduates will pursue post secondary education. Our students have access to the university's labs, physical education complex, and classrooms.

Program Highlights >

AP courses; CTE (pathway in Manufacturing, Engineering, and Technology); varsity sports

TO APPLY, contact the school.



DIGITAL HARBOR HIGH SCHOOL #416

1100 Covington Street • Southwest quadrant
443-984-1256 • Serves grades 9 to 12

Digital Harbor is an innovative, technology-focused high school. In addition to taking traditional courses to prepare for graduation, students can also study one of the six CTE programs to earn an industry certification.

Program Highlights >

AP courses; CTE (pathways in Arts, Media, and Communication; Human Resource Services; Information Technology; and Manufacturing, Engineering, and Technology); English for Speakers of Other Languages (ESOL) program; varsity sports

TO APPLY, fill out the 2017-18 choice application.

EDMONDSON-WESTSIDE HIGH SCHOOL #400

501 N. Athol Avenue • Southwest quadrant
410-396-0685 • Serves grades 9 to 12

Edmondson-Westside provides students with the best of both worlds — a college-preparatory curriculum resulting in a high school diploma and industry licensing or certification in one of 16 career pathways. Our students are prepared to enter colleges or universities, technical or trade schools, and the world of work. Other highlights include opportunities for our seniors to participate in work-study programs or dual enrollment with a local community college.

Program Highlights >

AP courses; CTE (pathways in Arts, Media and Communication; Business, Management, and Finance; Construction and Development; Consumer Services, Hospitality, and Tourism; Health and Biosciences; Human Resource Services; Information Technology; Manufacturing, Engineering, and Technology; and Transportation Technologies); varsity sports

TO APPLY, fill out the 2017-18 choice application; a minimum 475 composite score is required.

SCHOOL OPTIONS | HIGH SCHOOL

FOREST PARK HIGH SCHOOL #406

6900 Park Heights Avenue • Northwest quadrant
410-396-0753 • Serves grades 9 to 12

At Forest Park, our students prepare for success. Rigorous, relevant 21st-century curricula include mastery of language, appreciation of the arts, and development of skills for the competitive workforce. Instruction is developed by evaluating and analyzing students' knowledge, skills, performance, experiences, and dispositions. Realize your exceptional potential at Forest Park!

Program Highlights >

AP courses; CTE (pathways in Business, Management and Finance; Consumer Services, Hospitality and Tourism; Human Resource Services; and Transportation Technologies); Army JROTC; varsity and intramural sports; community school

TO APPLY, fill out the 2017-18 choice application.

*For 2017-18, this school is temporarily located at the address noted above while its permanent building, located at 3701 Eldorado Avenue, is renovated as part of the 21st-Century School Buildings Plan. At this temporary location, this school is colocated with Northwestern High School, which is recommended to close in June 2017.

FREDERICK DOUGLASS HIGH SCHOOL #450

2301 Gwynns Falls Parkway • Northwest quadrant
410-396-7821 • Serves grades 9 to 12

The historic Frederick Douglass High School is committed to empowering our students by inspiring them to think critically and to collaborate and communicate effectively with others. We prepare our students to solve problems efficiently and creatively and to use technology to enrich their lives. Through participation in our various programs including the recording arts, media and production, law and leadership, emergency medical technician, Cab Calloway Music Careers, and JROTC, our students graduate college and career ready.

Program Highlights >

AP courses; CTE (pathways in Arts, Media, and Communication; and Human Resource Services); Army JROTC; community school; varsity and intramural sports

TO APPLY, fill out the 2017-18 choice application.



INDEPENDENCE SCHOOL LOCAL I HIGH SCHOOL #333

2801 N. Dukeland Street • Northwest quadrant
443-642-2504 • Serves grades 9 to 12

At Independence, every student is required to matriculate through the sciences with a standards-based performance approach, which includes exhibitions, project-based learning, wilderness camping trips, dual enrollment, and internships. We offer an intimate and rigorous learning environment that has extracurricular activities, intramural sports, tutoring, and student-focused clubs.

Program Highlights >

Experiential learning; science-based inquiry projects

TO APPLY, fill out the 2017-18 choice application.

*For 2017-18, this school is temporarily located at the address noted above while its permanent building, located at 1250 W. 36th, is renovated as part of the 21st-century School Buildings Plan. At the temporary location, the school is colocated with ConneXions: A Community Based Arts School. At its permanent location, it will be colocated with the Academy for College and Career Exploration.

MERGENTHALER VOCATIONAL-TECHNICAL HIGH SCHOOL #410

3500 Hillen Road • Northeast quadrant
410-396-6496 • Serves grades 9 to 12

Mervo provides a college-preparatory curriculum leading to a high school diploma and industry licensing or certification in one of 21 state-approved or nationally certified career pathways, as well as JROTC. Our students graduate prepared to enter college, technical or trade schools, or the world of work.

Program Highlights >

AP courses; CTE (pathways in Arts, Media, and Communication; Business, Management, and Finance; Construction and Development; Consumer Services, Hospitality and Tourism; Health and Biosciences; Human Resource Services; Information Technology; Manufacturing, Engineering, and Technology; and Transportation Technologies); English for Speakers of Other Languages (ESOL) program; varsity and intramural sports; Navy JROTC; on-site daycare

TO APPLY, fill out the 2017-18 choice application; a minimum 475 composite score is required.

NORTHWESTERN HIGH SCHOOL #401

6900 Park Heights Avenue • Northwest quadrant
410-396-0646 • Serves grades 9 to 12

Northwestern offers many comprehensive programs for students to ensure opportunities for their academic success. The academic and extracurricular programs are structured to support all students and include untraditional and customized pathways to success.

Program Highlights >

AP courses; CTE (pathways in Arts, Media, and Communication; Human Resource Services; and Information Technology); Air Force JROTC; English for Speakers of Other Languages (ESOL) program; varsity and intramural sports

TO APPLY, fill out the 2017-18 choice application.

As part of the district's annual review of schools and school buildings, the Board of School Commissioners is considering a recommendation to close this school as of June 2017.

PATTERSON HIGH SCHOOL #405

100 Kane Street • Southeast quadrant
410-396-9276 • Serves grades 9 to 12

Patterson is the most diverse high school in Baltimore City, offering various academic, athletic, and career pathways focusing on students' individual interests and needs. A morning breakfast program, yoga/meditation, and a school store are available for our students. Our staff is supportive, dedicated, and nurturing to all students.

Program Highlights >

AP courses; CTE (pathways in Arts, Media, and Communication; Business, Management, and Finance; Construction and Development; Consumer Services, Hospitality, and Tourism; Health and Biosciences; Human Resource Services; and Manufacturing, Engineering, and Technology); Air Force JROTC; English for Speakers of Other Languages (ESOL) program; varsity and intramural sports; community school

TO APPLY, fill out the 2017-18 choice application.

SCHOOL OPTIONS | HIGH SCHOOL

PAUL LAURENCE DUNBAR HIGH SCHOOL #414

1400 Orleans Street • Southeast quadrant
443-642-4478 • Serves grades 9 to 12

Dunbar empowers our Poets to “Learn Today, Lead Tomorrow.” Our rigorous curriculum provides students a comprehensive foundation in mathematics, science, and medical studies in a college-preparatory setting. The school offers career pathways in biomedical sciences, through Project Lead the Way and an emergency medical technician (EMT) program.

Program Highlights >

AP courses; CTE (pathways in Health and Biosciences; and Human Resource Services); varsity and intramural sports

TO APPLY, fill out the 2017-18 choice application; a minimum 610 composite score is required.

P-TECH AT DUNBAR

1400 Orleans Street • Southeast quadrant
443-642-3928 • Serves grades 9-12 and 2 years of college

Located within Paul Laurence Dunbar High School, P-TECH, a unique six-year school model, focuses on health sciences and has partnerships with Johns Hopkins University, University of Maryland, and Kaiser Permanente that allow students to work with leading professionals and acquire industry certifications, putting them on a path to employment. After six years, students graduate with both a high school diploma and a free two-year associate’s degree in health information technology, surgical technology, or respiratory care.

Program Highlights >

Unique six-year model; see page 6 for details

TO APPLY, call 443-642-3928.

THE REACH! PARTNERSHIP SCHOOL #341

2801 Saint Lo Drive • Northeast quadrant
443-642-2291 • Serves grades 8 to 12

The REACH! Partnership School’s graduates are prepared and motivated for post secondary education and are qualified for entry-level positions in healthcare, construction, homeland security, and the U.S. military. We look at each student as an individual, and we work with our resources to promote success.

Program Highlights >

AP courses; CTE (Career Research and Development; pathways in Construction and Development; and Health and Biosciences); Army JROTC; intramural sports; community school

TO APPLY, fill out the 2017-18 choice application.

As part of the district’s annual review of schools and school buildings, the Board of School Commissioners is considering a recommendation to relocate this program to the Fairmount-Harford building (2555 Harford Road, Baltimore 21218) beginning in the 2020-21 school year. The Board is also considering a recommendation to renew the contract for the operator of this school for subsequent years.

During the 2017-18 school year, the Academy for College and Career Exploration is temporarily colocated with this school.



REGINALD F. LEWIS HIGH SCHOOL #419

6401 Pioneer Drive • Northeast quadrant
410-545-1746 • Serves grades 9 to 12

At Reginald F. Lewis, we believe in educating the whole child through a challenging curriculum with a focus on business, law, and agriculture. We offer a variety of internship opportunities, real-world experiences, and extracurricular activities. Our learning environment promotes academic excellence by stimulating the minds, spirits, and hearts of students. Our scholars are equipped to create their own destiny as they transition from high school to post secondary opportunities.

Program Highlights >

AP courses; CTE (pathways in Business, Management, and Finance; Environmental, Agriculture, and Natural Resources; and Human Resource Services); English for Speakers of Other Languages (ESOL) program; varsity and intramural sports; community school

TO APPLY, fill out the 2017-18 choice application.

RENAISSANCE ACADEMY #433

1301 McCulloh Street • Southwest quadrant
443-984-3164 • Serves grades 9 to 12

Renaissance Academy prepares students for college and career through themed study in law, government, and justice. Academic highlights include an introduction to law course and an innovative homeland security program. Students are supported in a small school environment where they plan for post secondary options. Our school motto invites you to “Begin Your Quest.”

Program Highlights >

AP courses; CTE (pathway in Human Resource Services); STEM focus; intramural sports; community school

TO APPLY, fill out the 2017-18 choice application.

As part of the district’s annual review of school programs and buildings, the Board of School Commissioners is considering a recommendation to close this school as of June 2017.



SCHOOL OPTIONS | HIGH SCHOOL

VIVIEN T. THOMAS MEDICAL ARTS ACADEMY #429

100 N. Calhoun Street • Southwest quadrant
443-984-2831 • Serves grades 9 to 12

The Vivien T. Thomas Medical Arts Academy graduates students who are academically and professionally prepared for the rigors of college and the 21st-century global workforce. The program is designed to engage, motivate, and prepare students for careers in the health professions. Students have the opportunity to select from a plethora of healthcare pathways.

Program Highlights >

AP courses; CTE (Career Research and Development and pathways in Health and Biosciences; and Human Resource Services)

TO APPLY, fill out the 2017-18 choice application.

WESTERN HIGH SCHOOL #407

4600 Falls Road • Northwest quadrant
410-396-7040 • Serves grades 9 to 12

Western High School, established in 1844, is the oldest all-girls public school in the nation. This National Blue Ribbon School offers a rigorous college-preparatory curriculum strategically designed to encourage advanced-level course work that challenges young women to be intelligent and insightful leaders in the world around them.

Program Highlights >

All-female student body; AP courses; STEM focus; CTE (pathways in Health and Biosciences; Human Resource Services; Information Technology; and Manufacturing, Engineering, and Technology); English for Speakers of Other Languages (ESOL) program; varsity sports

TO APPLY, fill out the 2017-18 choice application; a minimum 610 composite score is required.







BALTIMORE CITY
PUBLIC SCHOOLS

Sonja Brookins Santelises
CEO, Baltimore City Public Schools

Marnell A. Cooper
Chair, Baltimore City Board of School Commissioners