

INSTALLATION INSTRUCTIONS

LabVIEW™ 2009 Education Edition

Contents

System Requirements.....	1
Windows	1
Mac OS X	1
Installing the LabVIEW Education Edition	2
Windows	2
Mac OS X	3
Where to Go from Here	4

System Requirements

The LabVIEW Education Edition has the following requirements.

Windows

- Windows Vista/XP/2000
- 2.4 GB of disk space

Mac OS X

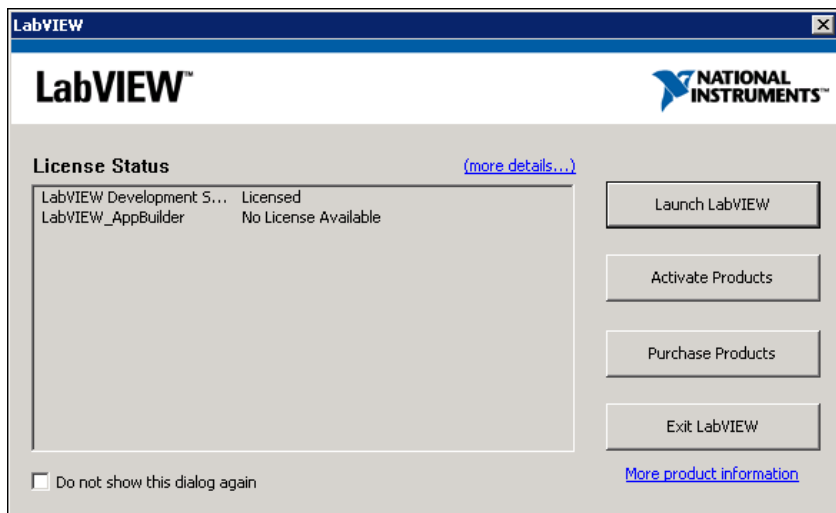
- Mac OS X 10.4.0 or later
- 1.4 GB of disk space

Installing the LabVIEW Education Edition

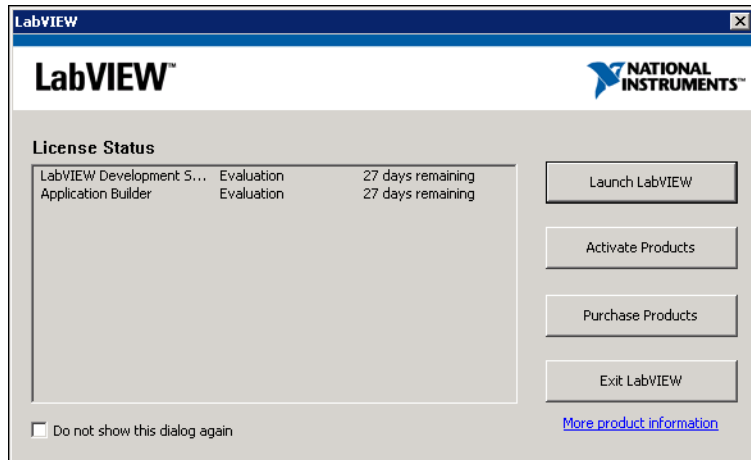
Windows

Complete the following steps to install and activate the LabVIEW Education Edition for Windows.

1. Log on as an administrator or as a user with administrator privileges.
2. Disable any automatic virus detection programs before you install. Some virus detection programs interfere with installation.
3. Insert the LabVIEW Education Edition installation DVD for Windows.
4. Follow the instructions that appear on the screen.
5. Enter the serial number when prompted. The serial number is located on the **Certificate of Ownership** card.
6. After installation, enable any virus detection programs you disabled.
7. Launch the LabVIEW Education Edition by double-clicking the **LabVIEW Education Edition 2009** shortcut on the computer desktop.
8. If you entered a valid serial number during installation, the following window appears. Place a checkmark in the **Do not show this dialog again** checkbox, and click the **Launch LabVIEW** button.



9. If the serial number you entered during installation is not valid, the following window appears. Click the **Activate Products** button to activate the software.



Mac OS X

Complete the following steps to install the LabVIEW Education Edition for Mac OS X 10.4.0 or later.

1. Disable any automatic virus detection programs before you install. Some virus detection programs interfere with installation.
2. Insert the LabVIEW Education Edition installation DVD for Mac OS X 10.4.0 or later.
3. Double-click the NI LabVIEW Education Edition.mpkg file to launch the installer.
4. Follow the instructions that appear on the screen.
5. After installation, enable any virus detection programs you disabled.

Where to Go from Here

Refer to the following resources for information about programming with and using the LabVIEW Education Edition:

- Click the **Getting Started with LV Education Edition** link from the **Getting Started** window to access information about NXT Module programming concepts, reference information, and migration from LEGO® MINDSTORMS® and ROBO LAB.
- Visit the *NXTMastery* Web site at nxtmastery.com for a list of hands-on lessons for learning to program the NXT brick with the LabVIEW Education Edition.
- Click the **Using LV Education Edition in the Classroom** link from the **Getting Started** window to download classroom activities and interactive LabVIEW Education Edition tutorials.
- Refer to the *LabVIEW Quick Reference Card* in the LabVIEW Education Edition software kit to find tips such as keyboard shortcuts in LabVIEW.
- Select **Help»NXT Module Help** in the software to access advanced help information that you might find helpful as you use the LabVIEW Education Edition.

LabVIEW, National Instruments, NI, ni.com, the National Instruments corporate logo, and the Eagle logo are trademarks of National Instruments Corporation. Refer to the *Trademark Information* at ni.com/trademarks for other National Instruments trademarks. LEGO and MINDSTORMS are trademarks of the LEGO Group. Other product and company names mentioned herein are trademarks or trade names of their respective companies. For patents covering National Instruments products/ echnology, refer to the appropriate location: **Help»Patents** in your software, the `patents.txt` file on your media, or the *National Instruments Patent Notice* at ni.com/patents. For copyright notices, conditions, and disclaimers, including information regarding certain third-party components used in LabVIEW, refer to the *Copyright* topic in the *LabVIEW Help*.