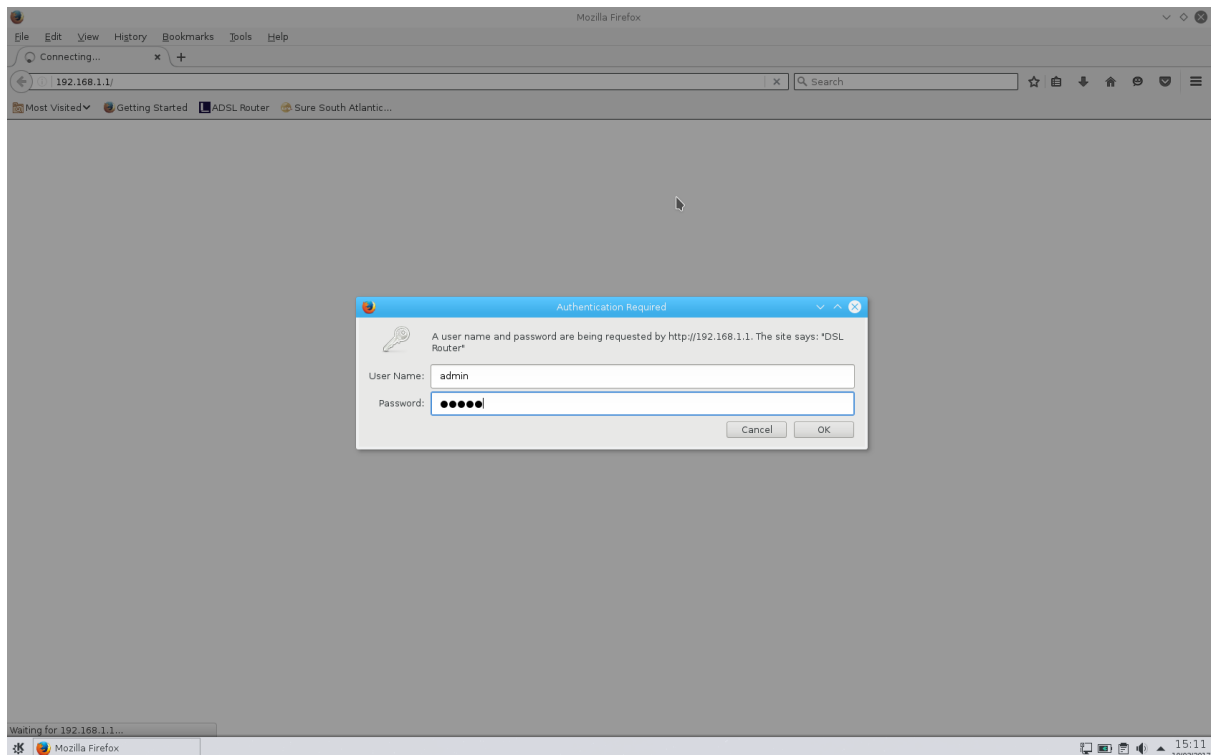


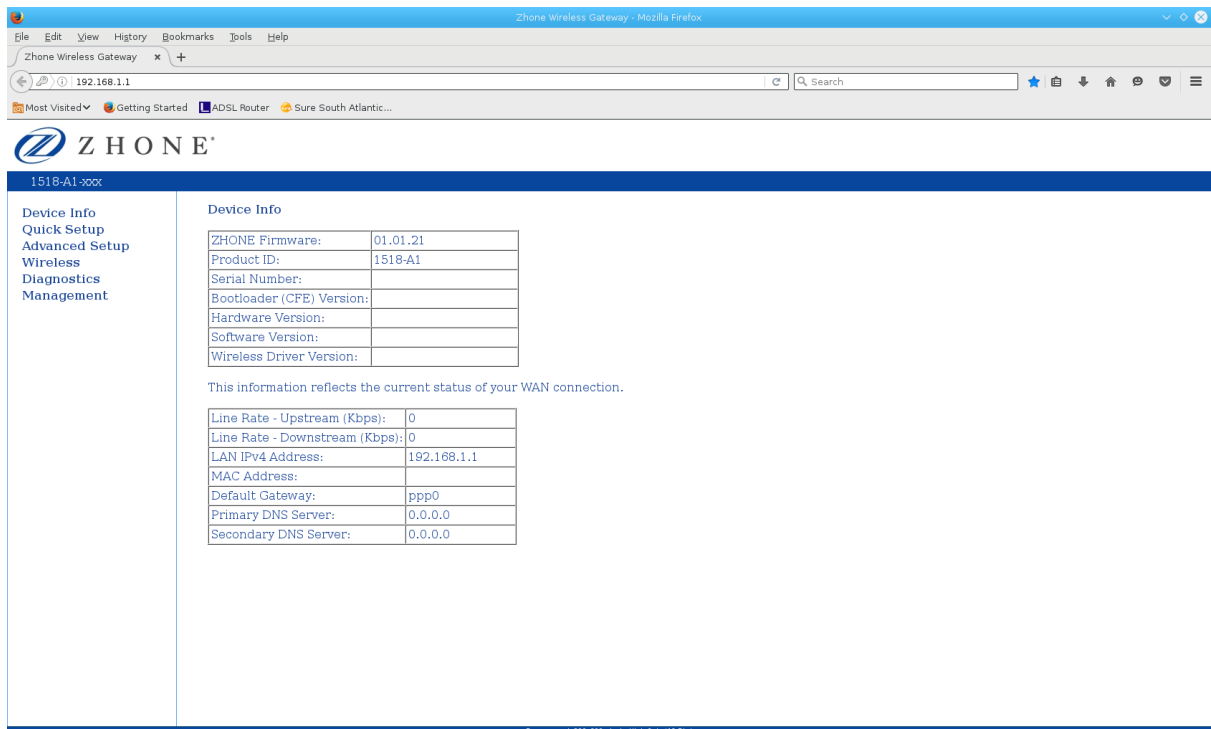
Changing the Wi-Fi Password on a Zhone Modem

Note: This should be done on a PC, either desktop or laptop, which is physically connected to the modem via an Ethernet cable.

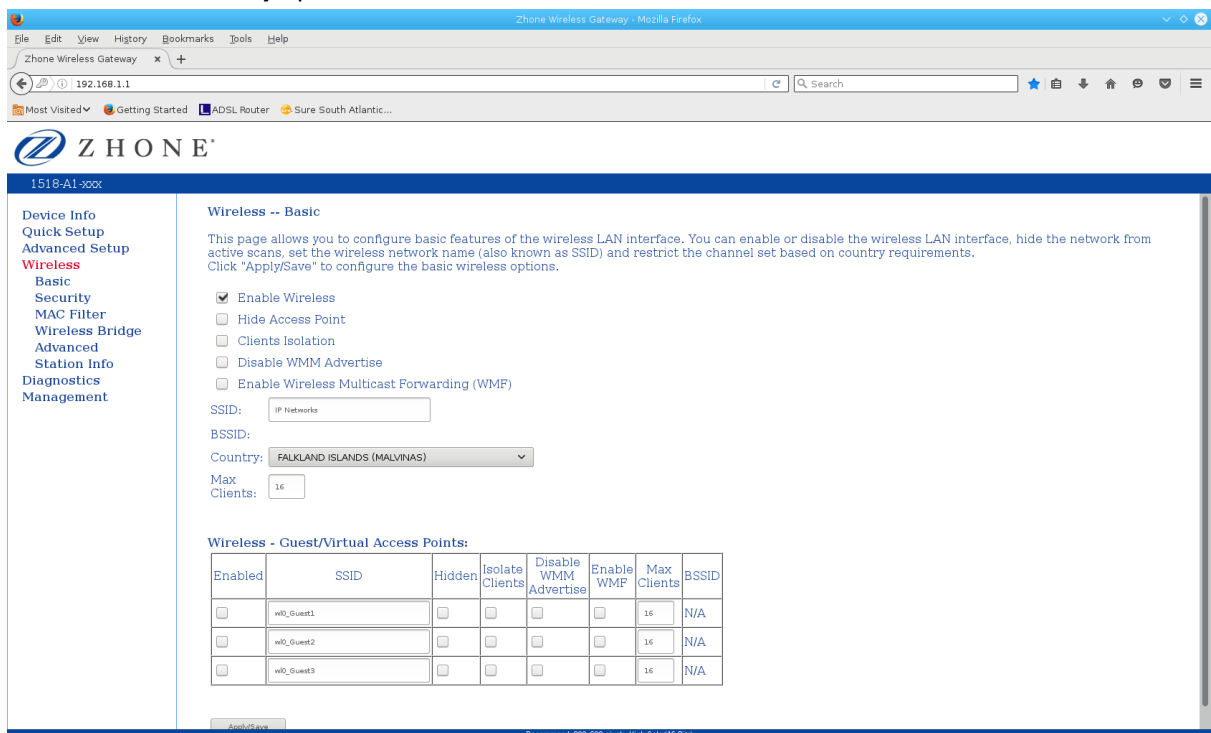
1. Open a web browser of your choice (Internet Explorer, Firefox, Chrome, etc.)
2. In the address bar, enter the following address: **192.168.1.1**
3. A dialog should appear, prompting for a username and password. If it does not, please make sure that the address bar only contains the address 192.168.1.1 or http://192.168.1.1
4. By default the username is **admin**. For the grey Zhone modems, the password is **admin**. For the white Zhone modems, the password is **adminXXXXXX**, where **XXXXXX** is the last six digits of the modem's serial number. The serial number can be located either on the bottom of the modem's stand or on the bottom of the modem itself, and should have the following format: S/N: 308XXXXXX



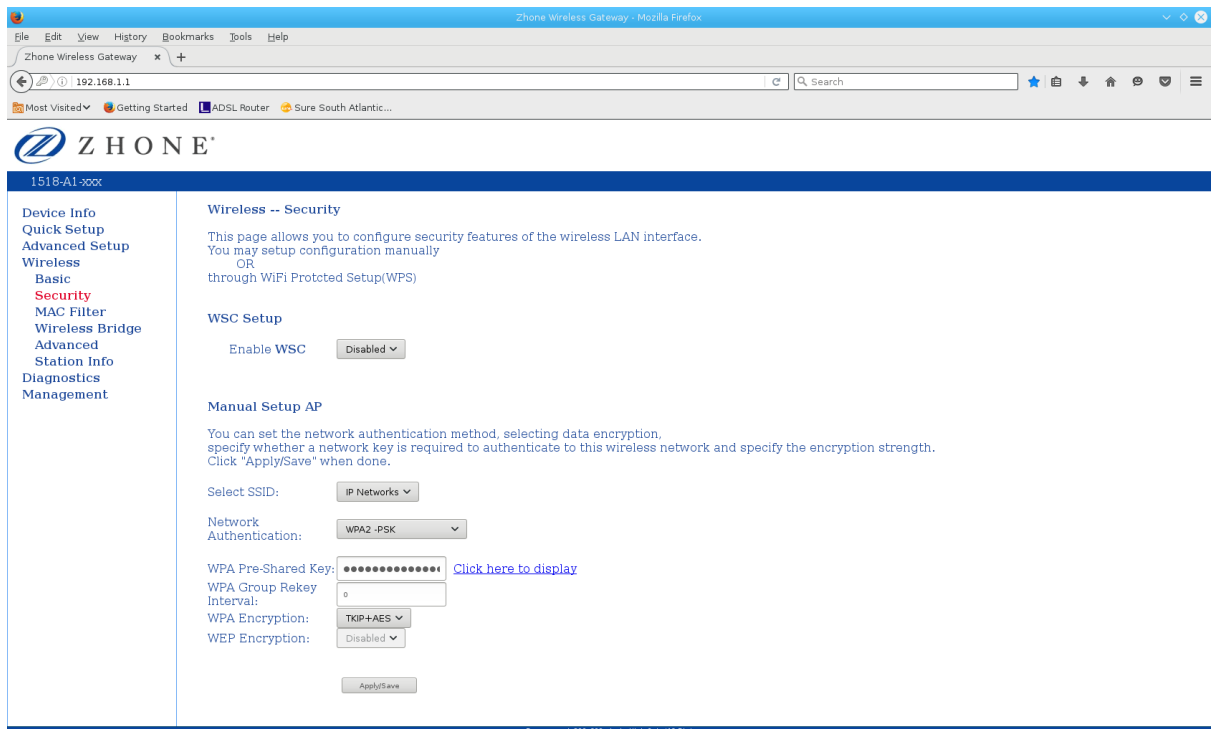
5. After entering the username and password, a summary page should be displayed with a menu on the left. Select the **Wireless** option.



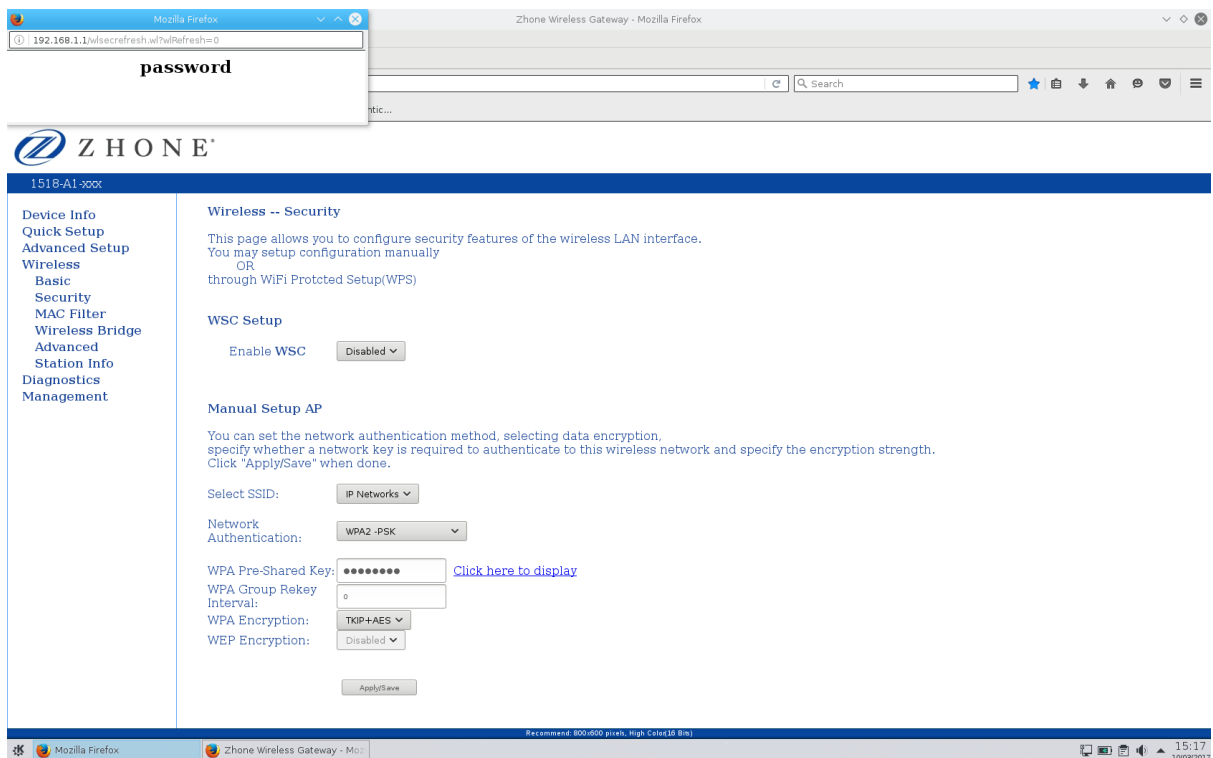
6. A page should appear that allows for configuration of the Wi-Fi network, such as the SSID or name of the network. The menu should also have expanded to include more menu options. Select the **Security** option.



7. Another page should appear with a number of settings for the security of the Wi-Fi network. In particular, there is a field named **WPA Pre-Shared Key**, which contains the password for the Wi-Fi network. Clear the existing password from the field and enter a new password. This can be any word or phrase you wish, so long as it does not contain any spaces. Additionally, it is recommended that the new password is longer than 8 characters and is hard to guess. Click the **Apply/Save** button.



- Once the page has reloaded, there is a link alongside the field, which when clicked will display the password in a new browser window. Check that the password is what you entered.



- The password change is complete. Close the browser window(s), and try connecting to the Wi-Fi network with the PC or another device. An authentication error should occur, in which case a dialog should appear, and the new password can be entered.