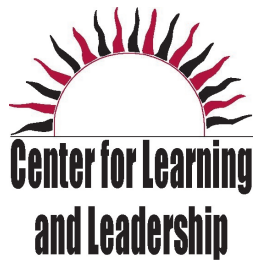


Guide to Community Services in Oklahoma

*for people with disabilities
and their families*



A University Center for Excellence
in Developmental Disabilities
University of Oklahoma Health Sciences Center

June 2013 Edition



This publication was made possible by the contributions of self-advocates, family members of individuals with disabilities, students and staff members of Oklahoma state agencies and organizations.

The Center for Learning and Leadership is a collaborative initiative of the University of Oklahoma Health Sciences Center, sponsored by the OU College of Medicine, with support from the U.S. Department of Health and Human Services, Administration on Intellectual and Developmental Disabilities grant # 90DD0685. Federal dollars (\$1140 for 170 copies) helped make this publication possible. Additional partners include the Oklahoma Department of Human Services – Developmental Disabilities Services and Aging Services Division; the Oklahoma Developmental Disabilities Council; the Oklahoma Disability Law Center; the Oklahoma Area-wide Services and Information System; and the Oklahoma Family Network.

This project was supported, in part, under grant # 90OC0017 from the U.S. Department of Health and Human Services, Administration on Aging. Grantees undertaking projects under government sponsorship are encouraged to express freely their findings and conclusions. These contents, however, do not necessarily represent the policy of the U.S. Department of Health and Human Services, and you should not assume endorsement by the Federal Government.

Copyright © 2011, 2013. Center for Learning and Leadership. This document may be reproduced with appropriate citation for educational purposes, but may not be reproduced for sale. Recommended citation for this publication:

R. Percival, M. Fenrick, V. Martin (2013). *Guide to Community Services in Oklahoma*, Center for Learning and Leadership/UCEDD, (Oklahoma's Federally Designated University Center for Excellence in Developmental Disabilities Education, Research and Service), University of Oklahoma Health Sciences Center, OU College of Medicine.

The University of Oklahoma is an Equal Opportunity Institution. www.ou.edu/eoo

Accommodations on the basis of disability are available by contacting: Melissa Fenrick, Center for Learning and Leadership/UCEDD, OUHSC, P.O. Box 26901, ROB 342, Oklahoma City, OK 73126 0901; 405 271 4500, Ext. 41002; melissa.fenrick@ouhsc.edu.

How to Use This Manual

This manual provides an overview of community services available in the state of Oklahoma for children and adults with disabilities and their families. Some services are provided specifically for individuals with disabilities, while others are not specifically related to disability status but may provide valuable supports.

Pages [i-viii](#) contain an overview of the services described in this manual, as well as points of entry for services, a timeline that describes how age affects eligibility for services, and a list of information and support resources.

Community services are categorized into the following sections:

- **Section 1: SoonerCare (Medicaid) Services**
- **Section 2: Medicaid Waiver Services**
- **Section 3: Additional Services for Children**
- **Section 4: Other Services for All Ages**

In the first three sections, the names of the services are listed across the top of each page. Information is grouped together with several categories: purpose, eligibility, services offered, application, planning, payment and monitoring of services. Key questions are on the left column. Section 4 provides more general information about services. A glossary of terms, which defines most services and benefits, is provided on pages [44-54](#).

This manual is meant to provide a general guide to services and is not intended to provide all the necessary information. For more specific information, contact the agency or organization listed with each program or service. Important contact information also is provided on pages [29](#) and [34-43](#).

The information contained in this manual is believed to be accurate as of June 2013. However, specific service eligibility requirements, income limits, contact information, policies and procedures are subject to change and accuracy cannot be guaranteed.

Contents

Overview of Services	<u>i</u>		
Points of Entry for Services	<u>ii</u>		
Timeline of Services	<u>iii</u>		
Information and Support Resources	<u>iv</u>		
Section 1: SoonerCare (Medicaid) Services	<u>1</u>		
SoonerCare (Medicaid)	<u>2</u>		
Early and Periodic Screening, Diagnosis and Treatment (EPSDT)/Child Health Services	<u>2</u>		
Personal Care Services	<u>4</u>		
Tax Equity and Fiscal Responsibility Act (TEFRA)	<u>4</u>		
Section 2: Medicaid Waiver Services	<u>7</u>		
In-Home Supports Waiver for Children (IHSW-C)	<u>8</u>		
In-Home Supports Waiver for Adults (IHSW-A)	<u>8</u>		
Community Waiver	<u>10</u>		
ADvantage Waiver	<u>10</u>		
Living Choice Demonstration	<u>12</u>		
My Life, My Choice Waiver	<u>12</u>		
Sooner Seniors Waiver	<u>14</u>		
Medically Fragile Waiver	<u>14</u>		
Self-Directed Services (SDS) Option	<u>16</u>		
Section 3: Additional Services for Children	<u>17</u>		
SoonerStart	<u>18</u>		
Women, Infants and Children (WIC)	<u>18</u>		
Supplemental Security Income-Disabled Children’s Program (SSI-DCP)	<u>20</u>		
Family Support Assistance Payment Program (FSAP)	<u>20</u>		
		Section 4: Other Services for All Ages	<u>23</u>
		Oklahoma Respite Resource Network (ORRN)	<u>25</u>
		Respite Voucher Program	
		Supplemental Security Income (SSI)	<u>26</u>
		Social Security Disability Insurance (SSDI)	<u>26</u>
		Services for Older Persons	<u>27</u>
		Area Agencies on Aging (AAAs)	<u>29</u>
		Assistive Technology Services	<u>30</u>
		Oklahoma Department of Rehabilitation Services (DRS)	<u>31</u>
		Education Services	<u>32</u>
		Oklahoma State Department of Health (OSDH) Services	<u>33</u>
		County Health Departments	<u>34</u>
		Mental Health Services	<u>37</u>
		Systems of Care by County	<u>38</u>
		Developmental Disabilities Services Division (DDSD)	<u>40</u>
		Area Offices	
		Social Security Offices	<u>41</u>
		Oklahoma Department of Human Services (OKDHS)	<u>42</u>
		County Offices	
		Glossary	<u>44</u>

Overview of Services



Family-to-Family Support

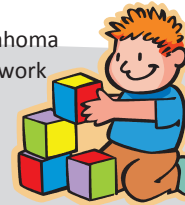
- Oklahoma Family Network ([pg. iv](#))
- Oklahoma Autism Network ([pg. viii](#))
- TARC ([pg. v](#))
- Sibshops ([pg. v](#))

Education

- Oklahoma Parents Center ([pg. 32](#))
- Oklahoma Disability Law Center ([pg. 32](#))
- Oklahoma Assistive Technology Center ([pg. 30](#))

Childcare/Respite

- Sooner SUCCESS/Oklahoma Respite Resource Network ([pg. iv/ 25](#))
- Easter Seals ([pg. vii](#))
- Childcare Referral 1-888-962-2772



Health Care/In-Home Services

- Medicaid Waiver Services ([pgs. 7-15](#))
- SoonerStart ([pg. 18](#))
- SoonerCare (Medicaid) Services ([pgs. 1-5](#))
- Services for Older Persons ([pgs. 27-29](#))



Housing

- Centers for Independent Living ([pg. vi](#))
- Community Action Agencies 405-949-1495

Social Services and Financial Resources

- FSAP ([pg. 20](#))
- SSI-DCP ([pg. 20](#))
- SSI ([pg. 26](#))
- SSDI ([pg. 26](#))
- WIC ([pg. 18](#))
- LIHEAP ([pg. vi](#))
- SNAP ([pg. vi](#))
- TANF ([pg. vi](#))

See also:
["Roadmap to Services"](#)



Information and Referral

- Sooner SUCCESS ([pg. iv](#)) 1-877-441-0434
- Area Agencies on Aging ([pgs. 27, 29](#)) 1-800-211-2116
- Oklahoma Family Network ([pg. iv](#)) 1-877-871-5072
- 2-1-1 ([pg. iv](#))



Assistive Technology

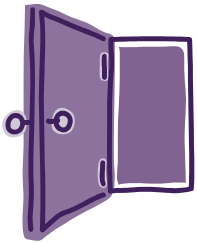
- ABLE Tech ([pg. 30](#))
- Oklahoma Assistive Technology Center ([pg. 30](#))



Employment Services

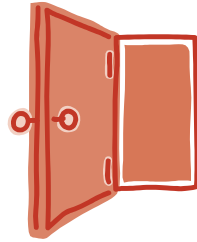
- Oklahoma Department of Rehabilitation Services ([pg. 31](#))

Points of Entry for Services



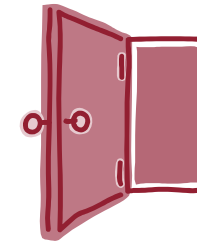
Oklahoma Department of Human Services
1-877-653-4798

- ADvantage Waiver
- SSI-DCP
- LIHEAP
- SNAP
- TANF
- Aid to the Disabled Payment
- SoonerCare (Medicaid)
– TEFRA



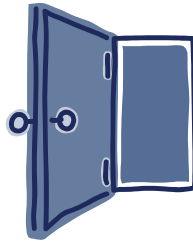
Oklahoma Health Care Authority

- SoonerCare (Medicaid)
(Online application only:
www.okhca.org)



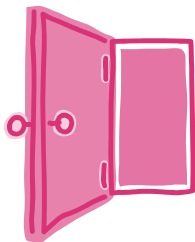
Area Agencies on Aging / Aging Services Division
1-800-211-2116

- Services for Older Persons
- Respite vouchers



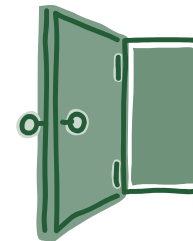
Developmental Disabilities Services Division
See [page 40](#)

- In-Home Supports Waivers
- Community Waiver
- FSAP
- Respite vouchers



Social Security Administration
1-800-772-1213

- SSI
- SSDI



Oklahoma State Department of Health / County Health Department
1-800-522-0203 / see [pages 34-36](#)

- WIC
- Child Guidance
- Children First
- Immunizations

Timeline of Services

There are several key times when eligibility for services and benefits change due to the age of the person receiving support. Below is a list of some of the ways age affects services.



Birth

- Eligibility for SoonerStart and WIC begins ([see page 18](#)).
- Eligibility for TEFRA begins ([see page 4](#)).
- Eligibility for EPSDT begins ([see page 2](#)).
- Eligibility for SSI-DCP and FSAP begins ([see page 20](#)).

Age 3

- Eligibility for the In-Home Supports Waiver and the Community Waiver begins ([see pages 8 and 10](#)).
- Eligibility for SoonerStart ends.

Age 5

- Children’s eligibility for WIC ends.

Age 18

- Eligibility for the In-Home Supports Waiver for Children ends.
- Eligibility for the In-Home Supports Waiver for Adults begins.
- Eligibility for SSI is based on individual’s income, not the family’s.
- Eligibility for SSI-DCP and FSAP ends.
- Children are no longer considered minors by Oklahoma law. Parents might want to consider if guardianship is appropriate for their child.
- In order to receive services through DDS, an intellectual disability (also known as mental retardation) must occur before age 18.

Age 19

- Eligibility for TEFRA ends.

Age 21

- Entitlement for public education ends. (Students who turn 21 during the school year are entitled to finish that school year.)
- Eligibility for EPSDT ends.
- Eligibility for the ADvantage Waiver begins for individuals with physical disabilities or a developmental disability but no intellectual disability ([see page 10](#)).

Age 22

- According to federal law and Oklahoma state law, a disability must have occurred before age 22 in order to be classified as a developmental disability.

Age 55

- Eligibility for services through the Aging Services Division begins for grandparents raising a grandchild ([see page 27](#)).

Age 60

- Eligibility for some services provided through the Aging Services Division begins ([see page 27](#)).

Age 65

- Eligibility for the ADvantage Waiver begins regardless of disability status ([see page 10](#)).
- Eligibility begins for some programs for older individuals, such as Medicare.

Information and Support Resources

Information and Referral

Sooner SUCCESS (formerly OASIS)



Sooner SUCCESS is a statewide resource center, providing information, referral and assistance for Oklahomans with disabilities and special health care needs. Anyone needing help can call the toll-free number below or search the online directory. Sooner SUCCESS has a database of thousands of agencies, organizations and programs throughout the state, and can help people find the services they need in their area.

soonersuccess.ouhsc.edu 1-877-441-0434



2-1-1

Dial 2-1-1 to connect with important community services and volunteer opportunities. 2-1-1 provides callers with information about and referrals to human services for everyday needs and in times of crisis.

Oklahoma Senior Info-Line

When you call this number, you will be connected to your local Area Agency on Aging.
1-800-211-2116

Searchable Online Resource Guides

- DRS: *Disability Resource Guide*
<http://www.okrehab.org/guide/indexmanual.html>
- ABLE Tech: *OK Funding for AT*
<http://www.ok.gov/abletech/documents/FundingManual2011.pdf>
- Sooner SUCCESS: *Resource Guide for Oklahoma's Children and Youth and their Families* soonersuccess.ouhsc.edu/
- JOIN (Joint Oklahoma Information Network) <http://www.join.ok.gov/>

Parent-to-Parent Support

Oklahoma Family Network (OFN)



The Oklahoma Family Network Family-to-Family Health Information Center informs and connects individuals with special health care needs and disabilities, their families and professionals to services and supports in their communities. OFN provides opportunities for individuals and families to strengthen their communities through leadership development and volunteering. The OFN Mentorship Program is the flagship program of the center.

Families may receive connections to:

- Parent-to-parent support
- Support groups
- Support in navigating the maze of health care and other supports in your community
- Opportunities to strengthen your community through leadership development and volunteering

OFN is devoted to family-centered care and one-to-one support for families of children with special health care needs and disabilities. If you would like to visit with another family that has a child with similar issues that your child is dealing with, contact OFN.

OFN's website also has a "Roadmap to Services" and a resource guide.

<http://www.oklahomafamilynetwork.org/>

1-877-871-5072 or 405-271-5072

See also: TARC, page v

Information and Support Resources

Advocacy

Oklahoma People First



People First is a statewide self-advocacy group run by and for people with developmental disabilities. There are 13 chapters across the state.

www.oklahomapeoplefirst.org

405-602-2704

TARC



TARC is a network of programs that educates, empowers and advocates for Oklahomans with developmental disabilities and their families. TARC programs include:

Family Support: A family assistance system for those who have children with developmental disabilities.

Self Advocacy: Activities that help adults with developmental disabilities be more successful and independent in daily life.

Grief Support: Helping individuals with developmental disabilities and their families cope with loss and grieving.

OK AIM: Sending volunteer monitors into residences where people with disabilities are being served to ensure they are receiving good care.

ARCCorps: Matches people with disabilities who do not have family members involved in their lives with volunteer guardians and advocates.

Speaking Out: Serving as the leading voice on issues impacting the lives of people with developmental disabilities and their families.

Tulsa: 918-582-8272

Ada: 580-421-9441 (OK AIM & ARCCorps programs only)

Oklahoma City: 405-557-1878 (OK AIM & ARCCorps programs only)

www.ddadvocacy.net

1-800-688-8272

Child Study Center

The Child Study Center offers evaluations, consultations and treatment from a highly-skilled team of pediatric specialists if your child has developmental, educational, behavioral or medical needs. Call the Child Study Center for help and support with conditions, including: Autism, Asperger's Syndrome, Attention Deficit Disorder and Neurodevelopmental disorders.

1100 N.E. 13th St.
Oklahoma City, OK

405-271-5700

www.oumedicine.com/csc

Sooner SUCCESS

Sooner SUCCESS involves professionals and family members working together to find resources and services for children with disabilities. Sooner SUCCESS has monthly meetings that you can attend. You can call [1-877-441-0434](tel:1-877-441-0434) or [405-271-5700](tel:405-271-5700), Ext. 45101, to connect to your local coordinator. You may also go to www.oumedicine.com/soonersuccess. Sooner SUCCESS is available in the following counties:

Blaine	Creek	Logan	Rogers
Canadian	Garfield	Major	Tulsa
Cleveland	Kingfisher	Pottawatomie	

Sibshops



Sibshops are workshops for brothers and sisters of children with disabilities and/or special health care needs. They provide peer support and education within a recreational context. Visit www.oumedicine.com/sibshops for more information or contact Lori Wathen, State Sibshop Coordinator, at lori-wathen@ouhsc.edu or 405-271-5700, Ext. 45180.

Information and Support Resources

Social Services

Low Income Home Energy Assistance Program (LIHEAP)

LIHEAP provides seasonal assistance to low-income households to assist with winter heating and summer cooling costs, and to provide emergency help for some families who have received utility cut-off notices.

Apply at your local OKDHS office in December and July for heating and cooling assistance. Check with your local utility company and ask if there are other assistance programs.

Supplemental Nutrition Assistance Program (SNAP)

SNAP (formerly Food Stamps) enables low-income families to buy nutritious food with Electronic Benefits Transfer (EBT) cards.

Apply at your local OKDHS office.

Temporary Assistance for Needy Families (TANF)

TANF is a federally funded program for children deprived of support because of a parent's death, incapacity, absence or unemployment.

Cash assistance is available to the family on a time-limited basis through TANF. The purpose of this federal program is to provide temporary support in meeting basic needs, training leading to employment, employment services and childcare assistance for qualified families with children.

Apply at your local OKDHS office.

For local OKDHS office contact information, see pages 42-43 or visit <http://www.okdhs.org/>.

Adult Community Resources

Centers for Independent Living

Centers for Independent Living provide or coordinate a range of services for people with disabilities that include housing assistance; case management for the Advantage Waiver; nursing home transition services; information and referral; peer counseling; financial and legal advocacy; community awareness and barrier removal; skills training; and assistive technology equipment loan programs.

Bartlesville

Dynamic Independence
918-335-1314 1-800-559-0567 (TDD)
<http://www.dynind.org/>

Enid

Sandra Beasley Independent Living Center
580-237-8508 (TDD) 1-800-375-4358 (TDD)
<http://www.sbilc.com/>

McAlester

Oklahomans for Independent Living
918-426-6220 (TDD) 1-800-568-6821 (TDD)
<http://www.oilok.org/>

Norman

Progressive Independence
405-321-3203 (TDD) 1-800-801-3203 (TDD)
<http://www.progind.org/>

Tulsa

Ability Resources
918-592-1235 (TDD) 1-800-722-0886 (TDD)
<http://www.ability-resources.org/>

Information and Support Resources

Resources for Children and Families

Oklahoma Family Support 360° Center



The Oklahoma Family Support 360° Center (360° Center) is a program of the Center for Learning and Leadership that provides support services to families of children with developmental disabilities who are Medicaid eligible. The 360° Center primarily serves families whose children receive health care services at

the Sooner Pediatrics Clinic, a teaching clinic of the OU Health Sciences Center. Other services include:

- Bilingual Family Support Coordinator (FSC)
- OK MAMAS, a support group for Hispanic families whose children have disabilities and facilitated by the bilingual FSC

405-271-4511

The Oklahoma Infant Transition Program (OITP)

OITP serves infants and families in the Newborn Intensive Care Unit (NICU) at Children's Hospital at OU Medical Center. The program focuses on the family's needs as they take their baby home and helps them connect with support services. OITP social workers manage the Tuesday Neonate Follow-Up clinic for infants who go home on oxygen.

405-271-6625

<http://www.oumedicine.com/oitp>

Easter Seals of Oklahoma



Easter Seals provides services to children and adults with disabilities and special needs and welcomes children with disabilities in its Inclusive Child Development Center. Children with disabilities may also receive additional services and therapy.

- Medical Rehabilitation
- Child Development Center - children 6 months to 5 years
- Adult Day Programs - meet daytime needs of adults with disabilities and older adults

405-239-2525

<http://www.eastersealsoklahoma.org>

701 N.E. 13th St.

Oklahoma City, OK 73104



J.D. McCarty Center

The J.D. McCarty Center offers a large variety of services to Oklahoma's children with developmental disabilities, including:

- Therapeutic services
- Medical services
- Mobility, orthopedic neurology and vision clinics
- Respite care

405-307-2800

1-800-777-1272

<http://www.jdmc.org/>


2002 E. Robinson St.

Norman, OK 73071

Information and Support Resources

Training and Advocacy

Oklahoma Developmental Disabilities Council (ODDC)

 The Oklahoma Developmental Disabilities Council promotes services and programs that enable persons with developmental disabilities to realize increased independence, productivity, and integration and inclusion in the community. Training and advocacy programs include:

Youth Leadership Forum (YLF): a five-day advocacy program for high school students with disabilities. Students learn and discuss issues that may affect their transition from high school and develop an advocacy plan for the year. Applications can be found at the website below.

Partners in Policymaking: advocacy training offered at no cost to self-advocates, family members and professionals wanting to improve opportunities for people with disabilities. For applications or more information, call 405-521-4967 or visit the website below.

405-521-4984 or 1-800-836-4470 www.okddc.ok.gov

Other Resources

Aging and Disability Resource Consortium (ADRC)

The Aging and Disability Resource Consortium (ADRC) is a collaborative effort in which the OKDHS Aging Services Division (ASD) assists people to:

- access information, advice, counseling and assistance
- access long-term supports and services
- experience fewer frustrations when trying to find needed information, services, and supports
- become empowered to make decisions
- and integrate and coordinate aging and disability service systems.

You may call 1-800-211-2116 or the Centers for Independent Living (page vi). In 2012 a public web portal will be implemented to serve the state as an online resource available 24 hours a day.

Oklahoma Autism Network

www.okautism.org 1-877-228-8476

Down Syndrome Association of Central Oklahoma

www.dsaco.org 405-330-5025



Down Syndrome Association of Tulsa

www.dsat.org 918-496-1873

Brain Injury Association of Oklahoma

www.braininjuryoklahoma.org 405-513-2575

Multiple Sclerosis Society

www.nationalmssociety.org

Oklahoma City 405-488-1300

Tulsa 918-488-0882 or 1-800-344-4867



United Cerebral Palsy

www.ucpok.org

Oklahoma City 405-759-3562

Tulsa 918-794-4655



The Arc of the United States

www.thearc.org 1-800-433-5255

Autism Society of America

www.autism-society.org 1-800-328-8476

Brain Injury Association of America

www.biausa.org 703-761-0750

Family Caregiver Alliance

www.caregiver.org

Section 1: SoonerCare (Medicaid) Services

- SoonerCare (Medicaid)
- Early and Periodic Screening, Diagnosis and Treatment (EPSDT)/Child Health Services
- Personal Care Services
- Tax Equity and Fiscal Responsibility Act (TEFRA)

Basic Income Eligibility Guidelines (185% of the Federal Poverty Level) *(does not apply to TEFRA and some categories of SoonerCare)*

NOTE: You **may** qualify for one or more of the above services if you meet these income guidelines, but you must fill out an application and meet other eligibility requirements. If you think your income may be too high, apply anyway; some applicants qualify with slightly higher income.

Size of Family	1	2	3	4	5	6	7	8	9 or more
Monthly Income Standard* (Subject to Change)	\$1,772	\$2,392	\$3,011	\$3,631	\$4,251	\$4,871	\$5,490	\$6,110	Add \$620 per month for each over 8

**Based on 2013 Federal Poverty Level guidelines. Eligibility for some categories of SoonerCare may include limits on resources.*

For more information call the Oklahoma Health Care Authority (OHCA) helpline at 1-800-987-7767 or visit this website: <http://www.okhca.org/>.

Name of Service	SoonerCare (Medicaid)	Early and Periodic Screening, Diagnosis and Treatment (EPSDT)/Child Health Services
PURPOSE		
Why is this service provided?	To serve as Oklahoma's Medicaid program and provide health care benefits to children under the age of 19; adults with children under the age of 18; pregnant women; and people who are over the age of 65 or have blindness or another disability.	To ensure availability and access to screenings, exams and other health resources to SoonerCare (Medicaid)-eligible children up to age 21. <i>EPSDT/Child Health Services is a benefit of SoonerCare (Medicaid).</i>
ELIGIBILITY		
Who is eligible for this program?	<p>To be eligible for these services, the individual must:</p> <ul style="list-style-type: none"> • Be a resident of the state of Oklahoma • Be a U.S. citizen or qualified alien (most immigrants who arrived after August 22, 1996 cannot qualify for this program for 5 years) <p>AND meet category-specific criteria:</p> <p><u>Children under the age of 19 and pregnant women:</u></p> <ul style="list-style-type: none"> • Must have a family income equal to or less than 185% of the federal poverty level <p><u>Adults with children under the age of 18:</u></p> <ul style="list-style-type: none"> • Be a recipient of Temporary Assistance for Needy Families (TANF) or meet certain income guidelines <p><u>Adults who are 65 or older:</u></p> <ul style="list-style-type: none"> • Meet certain income guidelines <p><u>Adults or children who have blindness or another disability determination from SSA:</u></p> <ul style="list-style-type: none"> • Meet certain income guidelines <p>NOTE: If you currently receive services from a waiver, you are eligible for SoonerCare services (if they are deemed medically necessary by OHCA) and do not have to apply.</p>	<p>To be eligible for these services, the individual must:</p> <ul style="list-style-type: none"> • Be age 0-20 (eligibility ends on 21st birthday) • Have current SoonerCare (Medicaid) eligibility
SERVICES OFFERED		
What are some examples of these services?	<p>Services offered may include (see glossary for definitions):</p> <ul style="list-style-type: none"> • Case management services • Dental services (limited services for adults) • Medical supplies and equipment • Home health services • Inpatient hospital services • Outpatient hospital services • Personal care services • Transportation to obtain covered medical care (SoonerRide) <p>NOTE: Only services deemed medically necessary by OHCA will be covered through SoonerCare (Medicaid).</p>	<p>Services offered may include:</p> <ul style="list-style-type: none"> • Assistive technology services • Exams to check the child's physical, developmental and mental milestones and nutrition status • Immunizations • Occupational and physical therapy services • Speech/language pathology services • Any medically necessary services covered or approved through SoonerCare (Medicaid)

Name of Service	SoonerCare (Medicaid) <i>continued</i>	Early and Periodic Screening, Diagnosis and Treatment (EPSDT)/Child Health Services <i>continued</i>
APPLICATION		
How do I apply for this program?	<p>If the person requesting benefits is over 65, or has blindness or another disability, contact your local Oklahoma Department of Human Services (OKDHS) office (see page 42) and ask to apply for SoonerCare (Medicaid). You will need to fill out the Request for Benefits form. If not, you will need to fill out the SoonerCare Health Benefits Application. You can download the application at www.okhca.org and mail it. <u>You also may be able to enroll, renew eligibility and update contact information online at www.okhca.org.</u> If you need assistance, call 1-800-987-7767. You must have eligibility renewed each year.</p>	<p>Apply for SoonerCare (Medicaid). There is no separate EPSDT application form for this service. You must have eligibility renewed each year.</p>
PLANNING		
How do I plan for services?	<p>The SoonerCare (Medicaid) doctor determines the needs of the individual and makes the appropriate referral. The Oklahoma Health Care Authority (OHCA) authorizes medically necessary services.</p>	<p>The SoonerCare (Medicaid) doctor determines the needs of the individual and makes the appropriate referral. The Oklahoma Health Care Authority (OHCA) authorizes medically necessary services.</p>
Where are services provided?	<p>Depending on your needs, services can be provided at SoonerCare (Medicaid)-approved hospitals, clinics and doctor's offices, as well as at school and in your home.</p>	<p>Depending on your needs, services can be provided at SoonerCare (Medicaid)-approved hospitals, clinics and doctor's offices, as well as at school and in your home.</p>
Who selects the service provider?	<p>The individual or family selects from a list of available providers. Providers contract with SoonerCare (Medicaid) as an agreement to provide services.</p>	<p>The parent or legal guardian selects from a list of available providers. Providers contract with SoonerCare (Medicaid) as an agreement to provide services.</p>
PAYMENT		
How are services paid?	<p>SoonerCare (Medicaid) services are approved and reimbursed by OHCA. Most services for adults may require a co-pay. Some services require prior authorization.</p>	<p>SoonerCare (Medicaid) services are approved and reimbursed by OHCA. Services are provided at no cost to those who qualify.</p>
MONITORING OF SERVICES		
How are services monitored?	<p>EPSDT services are monitored through various OHCA program units and/or internal audits.</p>	<p>EPSDT services are monitored through various OHCA program units and/or internal audits.</p>

Name of Service	Personal Care Services	Tax Equity and Fiscal Responsibility Act (TEFRA)
PURPOSE		
Why is this service provided?	To provide in-home support for the individual to remain in the home for as long as possible, to ensure safety of the individual and to prevent or minimize health deterioration of the individual. <i>Personal Care Services is a benefit of SoonerCare (Medicaid).</i>	To provide SoonerCare (Medicaid) services to children with physical or intellectual disabilities who would not typically qualify for Medicaid benefits because of their parents' income or resources, so that they can remain at home.
ELIGIBILITY		
Who is eligible for this program?	<p>To be eligible for these services, a person of any age must:</p> <ul style="list-style-type: none"> • Have a physical condition or combination of both physical and mental condition that results in the person being unable to independently perform activities of daily living, such as bathing, grooming, preparing meals, doing laundry, toileting, etc. • Have current SoonerCare (Medicaid) or Medicare eligibility • Be residing in their own home or renting an individual or shared residence • Not be living in an institution, room and board facility, or nursing facility <p>NOTE: This service does not provide technical care, such as tracheotomy care, colostomy or urostomy care, transferring a person who cannot assist, etc.</p>	<p>To be eligible for these services, the child must:</p> <ul style="list-style-type: none"> • Be age 0-18 (eligibility ends on 19th birthday) • Be a resident of Oklahoma • Be a U.S. citizen or qualified alien • Have a Social Security Number • Meet the Social Security definition of disability • Have a letter of denial for Supplemental Security Income (SSI) based on his or her parents' income and resources • Meet certain income guidelines. The child's income cannot exceed 250% of the federal poverty level (FPL); the parents' income is excluded. • Meet institutional level of care criteria (see page 48) • Live at home and have appropriate needs for in-home care • Be cared for in the home for the same amount or less of the estimated cost to care for him or her in an institution <p>NOTE: OKDHS determines financial eligibility. OHCA determines level of care, disability status and cost effectiveness. Children receiving TEFRA can still apply for DDSD Home and Community Based Waivers. If a child who is receiving TEFRA is approved for a waiver, TEFRA services will be discontinued.</p>
SERVICES OFFERED		
What are some examples of these services?	<p>Services offered may include assistance with:</p> <ul style="list-style-type: none"> • Exercise • General errands • Laundry • Light housekeeping • Meal preparation • Personal hygiene 	<p>Services offered may include:</p> <p>All SoonerCare (Medicaid) services allowed under the Medicaid State Plan and EPSDT/Child Health Services, as long as they are approved by OHCA.</p>

Name of Service	Personal Care Services <i>continued</i>	Tax Equity and Fiscal Responsibility Act (TEFRA) <i>continued</i>
APPLICATION		
How do I apply?	Contact your local Oklahoma Department of Human Services (OKDHS) office (see page 42) and apply for SoonerCare (Medicaid). There is no separate application for Personal Care Services. A long-term care nurse will assess the needs of the applicant. For assistance with intake or screening, call 1-800-435-4711. If you already are eligible for SoonerCare (Medicaid), call your local OKDHS office and ask to be referred to Personal Care Services. You must have eligibility renewed each year.	Contact your local OKDHS office (see page 42) and request TEFRA services. Complete the Request for Benefits form. Have your physician complete the Physician Assessment (TEFRA-1) form to determine medical eligibility. If you have never applied for SSI for your child, you must do so through the Social Security Administration (SSA); see page 41 . If SSA determines your child is ineligible because of your income, request a denial letter.
PLANNING		
How do I plan for services?	A plan is developed by the person receiving services, family members, the service provider, the OKDHS case worker and the nurse.	The child's doctor determines the needs of the child and makes the appropriate referral. The child's primary insurance (if applicable) and OHCA work together to authorize medically necessary services.
Where are services provided?	Services are provided in the person's home and other places with approval.	Depending on your needs, services can be provided at SoonerCare (Medicaid)-approved hospitals, clinics and doctor's offices, as well as at school and in your home.
Who selects the service provider?	The person receiving the services can select a home health agency provider from a list of agencies that are licensed or certified to provide the care. Or, the person can select a personal care attendant of his or her choice who is age 18 or older and passes a background check.	The parent or legal guardian selects a provider following the rules of both the primary insurance company and OHCA.
PAYMENT		
How are services paid?	SoonerCare (Medicaid) services are approved and reimbursed by OHCA. Services for adults <u>may</u> require a co-pay. Some services require prior authorization.	All services have to be approved by both the primary insurance company and OHCA. SoonerCare (Medicaid) pays after all other insurance resources are exhausted.
MONITORING OF SERVICES		
How are services monitored?	Personal Care Services are monitored by OHCA registered nurses. If offered through the ADvantage Waiver, services are monitored by case managers.	TEFRA is monitored through the OHCA Service Utilization Review (SUR) process.

Section 2: Medicaid Waiver Services

- In-Home Supports Waiver for Children (IHSW-C)
- In-Home Supports Waiver for Adults (IHSW-A)
- Community Waiver
- ADvantage Waiver
- Living Choice Demonstration
- My Life, My Choice Waiver
- Sooner Seniors Waiver
- Medically Fragile Waiver
- Self-Directed Services (SDS) Option



What is a Medicaid waiver?

A Medicaid Home and Community Based Waiver provides funding for in home and community supports. It allows individuals to “waive” institutional services in exchange for alternative services in their homes and communities. Medicaid waivers also allow the typical Medicaid income requirement to be waived so that only the income of the person being served is counted, not the family’s.

Name of Service	In Home Supports Waiver for Children (IHSW C)	In Home Supports Waiver for Adults (IHSW A)
PURPOSE		
Why is this service provided?	To provide services at home and in the community for children with an intellectual disability (mental retardation). Services are intended to enhance individual and family capabilities, support and strengthen the family unit, and expand individual and family control and direction of available resources.	To provide services at home and in the community for adults with an intellectual disability (mental retardation). Services are intended to enhance individual and family capabilities, support and strengthen the family unit, and expand individual and family control and direction of available resources.
ELIGIBILITY		
Who is eligible for this program?	<p>To be eligible for these services, the child must: Have an IQ below 70 and functional limitations in three or more of the following areas: self-care, communication, learning, mobility, self-direction, independent living and economic self-sufficiency. The child must ALSO:</p> <ul style="list-style-type: none"> • Be age 3 to 17 • Meet ICF-MR level of care (see page 48) • Not have an individual income exceeding 300% of allowable Social Security Income and no more than \$2,000 in resources (savings accounts, trust funds, etc.) • Live in his or her own home, the home of a family member or friend, an OKDHS group home or an OKDHS foster home • Be a resident of the state of Oklahoma <p>NOTE: If you are receiving these services, you cannot access FSAP (see page 20) or respite vouchers (see page 25).</p>	<p>To be eligible for these services, the individual must: Have an IQ below 70 and functional limitations in three or more of the following areas: self-care, communication, learning, mobility, self-direction, independent living and economic self-sufficiency. The individual must ALSO:</p> <ul style="list-style-type: none"> • Be 18 or older • Meet ICF-MR level of care (see page 48) • Not have an individual income exceeding 300% of allowable Social Security Income and no more than \$2,000 in resources (savings accounts, trust funds, etc.) • Live in his or her own home, the home of a family member or friend, an OKDHS group home or an OKDHS foster home • Be a resident of the state of Oklahoma <p>NOTE: If you are receiving these services, you cannot access FSAP (see page 20) or respite vouchers (see page 25).</p>
SERVICES OFFERED		
What are some examples of these services?	<p>Services offered may include:</p> <ul style="list-style-type: none"> • Adaptive equipment/assistive technology • Environmental (home) modifications • Family training • Habilitation Training Specialists (HTS) • Homemaker services • Occupational and physical therapy services for environmental (home) modification assessments only • Respite care • SoonerCare (Medicaid) services • Specialized medical supplies (only those not typically covered under SoonerCare (Medicaid)) • Self-Directed Services Option (see page 16) 	<p>Services offered may include:</p> <ul style="list-style-type: none"> • Audiology exams and treatment • Dental exams (age 21 and over) • Employment/vocational services • Environmental (home) modifications • Habilitation Training Specialists (HTS) • Medical supplies and services • Physical, occupational and speech/language therapy • Respite care • Skilled nursing services (LPN/RN) • SoonerCare (Medicaid) services • Transportation • Self-Directed Services Option (see page 16)

Service Type	In Home Supports Waiver for Children (IHSW C) <i>continued</i>	In Home Supports Waiver for Adults (IHSW A) <i>continued</i>
APPLICATION		
How do I apply?	Call your area Developmental Disabilities Services Division (DDSD) office (see page 40) and tell them you want to apply for developmental disability services. They will connect you to a DDSD intake worker who will explain the services and send you the Request for Developmental Disabilities Services application form.	Call your area Developmental Disabilities Services Division (DDSD) office (see page 40) and tell them you want to apply for developmental disability services. They will connect you to a DDSD intake worker who will explain the services and send you the Request for Developmental Disabilities Services application form.
PLANNING		
How do I plan for services?	An Individual Plan (IP) is developed after a meeting with the person receiving services, family members, service provider and DDSD case manager. Each person in the meeting contributes information for shaping the plan based upon the needs of the person receiving services.	An Individual Plan (IP) is developed after a meeting with the person receiving services, family members, service provider and DDSD case manager. Each person in the meeting contributes information for shaping the plan based upon the needs of the person receiving services.
Where are services provided?	Services are provided in the home or the community of the person receiving services.	Services are provided in the home or the community of the person receiving services.
Who selects the service provider?	The person receiving services or the family selects from a list of DDSD-contracted agencies/providers.	The person receiving services or the family selects from a list of DDSD-contracted agencies/providers.
PAYMENT		
How are services paid?	Waiver services are approved and reimbursed by the Oklahoma Health Care Authority (OHCA). Services are based on need but currently cannot exceed \$13,844 for each 12-month period.	Waiver services are approved and reimbursed by the Oklahoma Health Care Authority (OHCA). Services are based on need but currently cannot exceed \$20,671 for each 12-month period.
MONITORING OF SERVICES		
How are services monitored?	Your case manager will monitor services through routine visits. The Quality Assurance Unit of DDSD will make sure you receive the services authorized in your plan of care.	Your case manager will monitor services through routine visits. The Quality Assurance Unit of DDSD will make sure you receive the services authorized in your plan of care.

Service Type	Community Waiver	ADvantage Waiver
PURPOSE		
Why is this service provided?	To provide services to support individuals at risk of institutionalization to be cared for in their homes and communities, preserving their independence and ties to family and friends.	To provide adults with physical disabilities and adults age 65 or older with the option to live in their home instead of a nursing home.
ELIGIBILITY		
Who is eligible for this program?	<p>To be eligible for these services, the individual must:</p> <p>Have an IQ below 70 and functional limitations in three or more of the following areas: self-care, communication, learning, mobility, self-direction, independent living and economic self-sufficiency. The individual must ALSO:</p> <ul style="list-style-type: none"> • Be 3 years of age and older • Meet ICF-MR level of care (see page 48) • Have critical support needs that cannot be met by the In-Home Supports Waiver or other alternatives • Not have an individual income exceeding 300% of allowable Social Security Income and no more than \$2,000 in resources (savings accounts, trust funds, etc.) • Live in his or her own home, in a relative's home, with an adult companion, in specialized foster care or a group home • Be a resident of the state of Oklahoma 	<p>To be eligible for these services, the individual must:</p> <ul style="list-style-type: none"> • Be age 65 or older, or be age 21 or older with physical or developmental disabilities that do not include intellectual disabilities (mental retardation) • Be SoonerCare (Medicaid) eligible • Meet nursing home (nursing facility) level of care (see page 48) • Meet Medicare financial standards for long-term care services; currently the monthly income is limited to approximately \$2,000 and resources must not exceed \$2,000, but these amounts are subject to change. • Be residing in the home (the person cannot be living in an institution, room and board facility or nursing home to receive these services)
SERVICES OFFERED		
What are some examples of these services?	<p>Services offered may include:</p> <ul style="list-style-type: none"> • Adaptive equipment/assistive technology • Dental services • Environmental (home) modifications • Family training and counseling • Habilitation services (includes supported employment services, intensive personal supports and Habilitation Training Specialists) • Occupational, physical and speech/language pathology therapy (over age 21) • Prescriptions • Residential care services (includes agency companion, daily living supports, group home services and specialized foster care) • Respite care • Vocational services (for adults) 	<p>Services offered may include:</p> <ul style="list-style-type: none"> • Adult day health care • Assisted living (in certain areas of the state) • Case management • Consumer-Directed Personal Attendant Support Services (CD-PASS); see page 16 for more information • Environmental (home) modifications • Home-delivered meals • Hospice care • Physical, occupational, respiratory and speech therapy • Prescription drugs (above the Medicaid state plan limit) • Respite care • Skilled nursing services (LPN/RN) • Specialized medical equipment and supplies

Name of Service	Community Waiver <i>continued</i>	ADvantage Waiver <i>continued</i>
APPLICATION		
How do I apply for this program?	Call your area Developmental Disabilities Services Division (DDSD) office (see page 40).and tell them you want to apply for developmental disability services. They will connect you to a DDSD intake worker who will explain the services and send you the Request for Developmental Disabilities Services application form.	Contact your local OKDHS office (see page 42) and ask to apply for the ADvantage Waiver. If you currently are receiving SoonerCare (Medicaid) services, contact your current OKDHS case worker and ask to apply for the ADvantage Waiver. You also may call the ADvantage intake line at 1-800-435-4711 for assistance.
PLANNING		
How do I plan for services?	An Individual Plan (IP) is developed after a meeting with the person receiving services, family members, the service provider and the DDSD case manager. Each person in the meeting contributes information for shaping the plan based upon the needs of the person receiving services.	The person receiving services and his or her case manager work together to develop a service plan that is based on the person's needs. The service plan will include services that will be provided through the ADvantage Waiver, as well as those services provided through informal supports.
Where are services provided?	Services are provided in the home or the community of the person receiving services.	Services are provided in the home, at certain adult day health care centers and at some assisted living facilities.
Who selects the service provider?	The individual or family selects from a list of available providers. Providers contract with SoonerCare (Medicaid) as an agreement to provide services.	The person receiving the services selects his or her home health agency provider and case management provider from a list of agencies that are licensed or certified to provide services.
PAYMENT		
How are services paid?	Waiver services are approved and reimbursed by the Oklahoma Health Care Authority (OHCA). The annual cost cannot exceed the aggregate average cost of a public institution. The budget must be approved by DDSD or OHCA.	The cost of the person's services cannot exceed the cost of nursing home facility care. Services are based on the needs of the person and are approved and reimbursed by OHCA.
MONITORING OF SERVICES		
How are services monitored?	Your case manager will monitor services through routine visits. The Quality Assurance Unit of DDSD will make sure you receive the services authorized in your plan of care.	Services are consistently monitored by the case manager. The case manager must stay in contact with the person receiving services to ensure that his or her needs are being met and that he or she is safe in the home.

Name of Service	Living Choice Demonstration	My Life, My Choice Waiver
PURPOSE		
Why is this service provided?	To help Oklahomans who have a physical disability, intellectual disability or long-term illness transition out of nursing homes and Oklahoma's two public institutions (see page 48) and into the community.	To extend services provided in the Living Choice Demonstration for Medicaid-qualified individuals with physical disabilities who meet nursing home (nursing facility) level of care criteria (see page 48). These services support the individual in a community setting of their choice.
ELIGIBILITY		
Who is eligible for this program?	<p>To be eligible for these services, the individual must:</p> <ul style="list-style-type: none"> • Be at least 19 years of age • Qualify for SoonerCare (Medicaid) for at least one day prior to transition • Have lived in an institutional setting (such as a nursing home) for three months in a row prior to transition • Want to transition back into the community • Be able to live safely in the community • Be willing to play an active role in his or her plan of care 	<p>To be eligible for these services, the individual must:</p> <ul style="list-style-type: none"> • Be 20 - 64 years of age • Meet minimum Uniform Comprehensive Assessment Tool (UCAT) III criteria (see page 54) to determine medical eligibility • Have a physical disability • Qualify for SoonerCare (Medicaid) • Have received services through Living Choice
SERVICES OFFERED		
What are some examples of these services?	<p>Services offered may include:</p> <ul style="list-style-type: none"> • Adult day health care • Assistive technology and specialized medical equipment • Audiology treatment and evaluation • Case management • Dental services (up to \$1,000 per person annually) • Environmental/home modifications • Home-delivered meals • Occupational, physical and speech therapies • Personal care services • Prescription drugs • Psychological services • Respite • Skilled and private duty nursing • Transportation • Vision services (includes eye exam and glasses) • Self-Directed Services option (in the future); see page 16 	<p>Services offered may include:</p> <ul style="list-style-type: none"> • Adult day health care • Assistive technology and specialized medical equipment • Audiology treatment and evaluation • Case management • Dental services (up to \$1,000 per person annually) • Environmental/home modifications • Home-delivered meals • Occupational, physical and speech therapies • Personal care services • Prescription drugs • Psychological services • Respite • Skilled and private duty nursing • Transportation • Vision services (includes eye exam and glasses)

Name of Service	Living Choice Demonstration <i>continued</i>	My Life, My Choice Waiver <i>continued</i>
APPLICATION		
How do I apply for this program?	The individual, his or her family member, nursing facility staff or personal representative may contact Living Choice staff at 1-888-287-2443 to complete an intake by telephone. After eligibility is verified, a representative from Living Choice will call the individual in the nursing home and verify willingness to participate. If the individual is transitioning from a public institution, he or she does not need to contact Living Choice staff, but will work with DDSD staff to apply for this program.	Within 60 days prior to completion of Living Choice, people choosing to stay in a home or community-based setting may apply for transition into the My Life, My Choice Waiver. A recertification of eligibility is required. The person must meet all financial and medical eligibility requirements for recertification and complete an application for My Life, My Choice. The transition coordinator will assist with the process.
PLANNING		
How do I plan for services?	Each participant will work with a transition coordinator and a transition planning team to complete a transition plan to meet the person's needs.	Case managers develop the person's comprehensive plan of care, listing only services that are necessary to prevent institutionalization, as determined through assessments. Case managers initiate the addition of necessary services or deletion of unnecessary services, as determined by the person's condition and available support.
Where are services provided?	Services are provided in the home or the community of the person receiving services.	Services are provided in the home or the community of the person receiving services.
Who selects the service provider?	The individual selects from a list of available providers. Providers contract with SoonerCare (Medicaid) as an agreement to provide services. OHCA plans to allow individuals to pay a legally responsible family member as a provider under self-direction.	The individual selects from a list of available providers. Providers contract with SoonerCare (Medicaid) as an agreement to provide services. The person may keep their providers from Living Choice.
PAYMENT		
How are services paid?	The annual cost of services in Living Choice cannot exceed the aggregate average cost of a nursing home. Services are approved and reimbursed by the Oklahoma Health Care Authority (OHCA). There are no co-payments or deductibles.	The annual cost of services in the My Life, My Choice Waiver cannot exceed the aggregate average cost of a nursing home. Services are approved and reimbursed by OHCA. There are no co-payments or deductibles.
MONITORING OF SERVICES		
How are services monitored?	Living Choice participants have a transition coordinator/case manager that monitors the participant's transition plan at least monthly. Living Choice also utilizes a quality improvement strategy where staff members conduct provider audits, survey satisfaction and provide retrospective claims reviews.	Participants have a case manager that monitors the participant's transition plan at least monthly. Staff from OHCA also utilize a quality improvement strategy where staff members conduct provider audits, survey satisfaction and provide retrospective claims reviews.

Name of Service	Sooner Seniors Waiver	Medically Fragile Waiver
PURPOSE		
Why is this service provided?	<p>To extend services provided in the Living Choice Demonstration for Medicaid-qualified older individuals with long-term illnesses who meet nursing home (nursing facility) level of care criteria (see page 48). These services support the individual in a community setting of their choice.</p>	<p>The Medically Fragile Waiver is a Medicaid Home and Community Based Services (HCBS) Waiver used to finance non-institutional long-term care services through Oklahoma's SoonerCare (Medicaid) program for medically fragile individuals. Waiver membership is limited.</p>
ELIGIBILITY		
Who is eligible for this program?	<p>To be eligible for these services, the individual must:</p> <ul style="list-style-type: none"> • Be 65 years of age or older • Have transitioned to a home or community-based setting through Living Choice • Continue to meet nursing facility level of care on a yearly basis (see page 48) 	<p>To be eligible for these services, the individual must:</p> <ul style="list-style-type: none"> • Be 19 years of age or older • Be eligible for SoonerCare (Medicaid) • Meet nursing facility or hospital level of care (see page 48)
SERVICES OFFERED		
What are some examples of these services?	<p>Services offered may include:</p> <ul style="list-style-type: none"> • Adult day health care • Assistive technology and specialized medical equipment • Audiology treatment and evaluation • Case management • Dental services (up to \$1,000 per person annually) • Environmental/home modifications • Home-delivered meals • Occupational, physical and speech therapies • Personal care services • Prescription drugs • Respite • Skilled and private duty nursing • Transportation • Vision services (includes eye exam and glasses) 	<p>Services offered may include:</p> <ul style="list-style-type: none"> • Adult day health care • Advanced supportive/restorative assistance • Case management • Environmental/home modifications • Home-delivered meals • Hospice care • Medically necessary prescription drugs within the limits of the waiver • Personal care services • Physical, occupational and respiratory therapies • Respite • Skilled nursing • Specialized medical equipment and supplies

Name of Service	Sooner Seniors Waiver <i>continued</i>	Medically Fragile Waiver <i>continued</i>
APPLICATION		
How do I apply for this program?	Contact the Oklahoma Health Care Authority at 1-888-287-2443 to apply for the Sooner Seniors Waiver. You must apply for the Sooner Seniors Waiver at least 60 days before completing the first 365 days of participation in Living Choice.	To apply call the Oklahoma Health Care Authority (OHCA) at 1-888-287-2443. If waiver slots are available, the application process is initiated by the receipt of a UCAT (see page 54), Part I or by an oral request for services. A written financial application is not required for an individual who is receiving SoonerCare (Medicaid) services at the time of application.
PLANNING		
How do I plan for services?	The person receiving services works with a case manager to develop a plan of care that is based on the person's needs. Only services listed on the plan can be paid for through this waiver.	The person receiving services works with a case manager to develop a plan of care that is based on the person's needs. Only services listed on the plan can be paid for through this waiver.
Where are services provided?	Services are provided in the home or the community of the person receiving services.	Services are provided in the home or the community of the person receiving services.
Who selects the service provider?	The individual selects from a list of available providers. Providers contract with SoonerCare (Medicaid) as an agreement to provide services.	The individual selects from a list of available providers. Providers contract with SoonerCare (Medicaid) as an agreement to provide services.
PAYMENT		
How are services paid?	The annual cost of services in the Sooner Seniors Waiver cannot exceed the aggregate average cost of a nursing home. Services are approved and reimbursed by the Oklahoma Health Care Authority (OHCA).	The annual cost of services in the Medically Fragile Waiver cannot exceed the aggregate average cost of a nursing home. Services are approved and reimbursed by the Oklahoma Health Care Authority (OHCA).
MONITORING OF SERVICES		
How are services monitored?	Sooner Seniors Waiver participants have a case manager that monitors the participant's transition plan at least monthly. Staff from OHCA also utilize a quality improvement strategy where staff members conduct provider audits, survey satisfaction and provide retrospective claims reviews.	Medically Fragile Waiver participants have a case manager that monitors the participant's transition plan at least monthly. Staff from OHCA also utilize a quality improvement strategy where staff members conduct provider audits, survey satisfaction and provide retrospective claims reviews.

Self Directed Services (SDS) Option

What is the Self-Directed Services (SDS) option?	Who can participate?
<p>The SDS option allows the person receiving services and his or her family to have more control over how services are delivered. Currently this option is available for certain parts of the In-Home Supports Waiver for Children, the In-Home Supports Waiver for Adults and the ADvantage Waiver.</p> <p>In the traditional (non-SDS) option, provider agencies have the responsibility of hiring staff and providing other services and supports outlined in the plan of care. In order to be able to provide services, these agencies must have a contract with the Oklahoma Health Care Authority (OHCA). In the SDS option, there is no agency acting as the employer. Rather, the person receiving services and/or family members can make decisions about who to hire to provide services.</p>	<p>Any person who is receiving services from the waivers listed above may choose to participate in the SDS option. A person may direct his or her own services if he or she is at least 18 years old and has the ability to make decisions about services. If needed, a representative can assist the person receiving supports in self-directing services. A representative can be:</p> <ul style="list-style-type: none"> • A parent • A spouse • A guardian • A family member or friend <p>The representative must:</p> <ul style="list-style-type: none"> • Be at least 18 years old • Follow OKDHS and OHCA policies and regulations • Be able to identify the needs and preferences of the person receiving services
What services can be self-directed?	What are the responsibilities?
<p>In all of the self-directed waiver options, the person, parents of a minor, or guardian has the authority to use the approved budget to hire someone to provide assistance and make decisions about the types of support that are needed with help from a case manager.</p> <p>In the DDSD In-Home Supports Waivers, the hired person is called a self-directed habilitation training specialist, or SD-HTS (see page 52). Self-directed Goods and Services (SD-GS) may also be acquired that meet the needs of the person receiving supports (see page 52). SD-GS are purchased from a vendor or store of choice, not an OHCA-contracted vendor. However, the SDS option may not apply to all goods and services.</p> <p>In the ADvantage Waiver, you only may self-direct your personal care attendant through the Consumer-Directed Personal Attendant Support Services (CD-PASS) program. CD-PASS currently is operating only in the Tulsa area, but is expected to be offered statewide in the future.</p> <p>The following waivers are planned to have the SDS option in the future for at least some services, but do not currently offer the SDS option:</p> <ul style="list-style-type: none"> • Living Choice Demonstration • Sooner Seniors Waiver • My Life, My Choice Waiver • Medically Fragile Waiver 	<p>Responsibilities of the person receiving services or the representative will include:</p> <ul style="list-style-type: none"> • Working with a financial management services (FMS) subagent to manage the SDS account • Participating in the development of the needs assessment and SDS budget • Following the approved budget • Managing staff — finding, hiring, supervising and firing • Providing documentation for items or services purchased • Following OKDHS and OHCA policies • Notifying the case manager of plan or budget changes • Keeping required records • Paying out of pocket for any expenses not identified and approved in the budget

Section 3: Additional Services for Children

- SoonerStart (Oklahoma's Early Intervention Program)
- Women, Infants and Children (WIC)
- Supplemental Security Income-Disabled Children's Program (SSI-DCP)
- Family Support Assistance Payment Program (FSAP)

Why is early intervention important?

Early intervention is “an effective way to help children catch up or address specific developmental concerns as soon as possible in their lives.”¹ Early intervention also is important because early childhood is a time of great growth and development. Oklahoma's early intervention program (birth to age three) is SoonerStart. See [pages 18 19](#) for more information.

¹ National Dissemination Center for Children with Disabilities. (2011). Help for Babies (0 to 3). Retrieved from <http://www.nichcy.org/babies/Pages/Default.aspx>



Name of Service	SoonerStart	Women, Infants and Children (WIC)
PURPOSE		
Why is this service provided?	To provide statewide early intervention services for children from birth through 36 months of age who exhibit signs of developmental delays.	To provide identified health referrals, nutrition education and supplemental foods for good health during critical times of growth and development to young children and women.
ELIGIBILITY		
Who is eligible for this program?	<p>To be eligible for these services, the child must:</p> <ul style="list-style-type: none"> • Be 0 - 36 months in age <p>AND fall into one of the following categories:</p> <ul style="list-style-type: none"> • Exhibits a delay in their developmental age compared to their chronological age of 50% in one or 25% in two of the following developmental areas: adaptive, cognitive, communication, physical or social-emotional development <p>OR</p> <ul style="list-style-type: none"> • Has been diagnosed with a physical or cognitive condition that has a high probability of resulting in delay <p><i>There are no financial eligibility requirements.</i></p>	<p>To be eligible for these services, the individual must:</p> <ul style="list-style-type: none"> • Be pregnant, breastfeeding or have recently given birth (including women who have recently had an abortion or miscarriage) OR • Be a child between the ages of 0 and 5 <p>AND</p> <ul style="list-style-type: none"> • Live in the state of Oklahoma • Meet SoonerCare (Medicaid) family income and resource guidelines of 185% or less of the Federal Poverty Level (see page 1 for current guidelines, which are subject to change)
SERVICES OFFERED		
What are some examples of these services?	<p>Services offered may include:</p> <ul style="list-style-type: none"> • Assistive technology services • Audiology • Case management • Early identification (with screening, evaluation and assessment) • Family training, counseling and home visits • Health services • Medical services (only for diagnostic purposes) • Nursing services • Nutrition services • Occupational, physical and speech therapies • Psychological services • Service coordination • Social work services • Special instruction • Vision services 	<p>Services offered may include:</p> <ul style="list-style-type: none"> • Free information on nutrition, healthy eating and breastfeeding • Nutritious foods to add to your diet, such as milk, juice, cheese, cereal, beans, eggs, fresh/frozen fruits and vegetables, whole grain foods like whole wheat bread and corn tortillas, and iron-fortified formula • Breastfeeding education and counseling • Breast pumps based on assessed need • Referrals to health and social services

Name of Service	SoonerStart <i>continued</i>	Women, Infants and Children (WIC) <i>continued</i>
APPLICATION		
How do I apply?	Call your regional SoonerStart office (see page 36).	Call 1-888-655-2942 to set up an appointment with your WIC office. You will need to provide proof of identification for the parent/guardian and the child, household income and address when you go to your appointment.
PLANNING		
How do I plan for services?	An Individualized Family Service Plan (IFSP) will be developed by a team of people invested in the child's well-being. The team consists of the child's family, the resource coordinator and service providers.	WIC program staff will help you determine appropriate services and when/where they are offered.
Where are services provided?	Services are typically provided in the child's most natural environment (e.g., the child's home or child care). If home-based services are not convenient for your family, SoonerStart will work with you to provide services at an alternate location.	Services are provided at WIC sites throughout the state in county health departments, clinics, hospitals and health centers.
Who selects the service provider?	Parents are encouraged to provide input regarding the service providers involved with their family; however, service providers either are directly employed or on contract with the Oklahoma State Department of Health (OSDH).	N/A
PAYMENT		
How are services paid?	Services are provided at no direct cost to the child's family.	Services are provided at no direct cost to the child's family.
MONITORING OF SERVICES		
How are services monitored?	Services are reviewed at least every six months, but your child's IFSP may be reviewed at anytime upon request.	Services are monitored by the Oklahoma State Department of Health (OSDH).

Name of Service	Supplemental Security Income Disabled Children's Program (SSI DCP)	Family Support Assistance Payment Program (FSAP)
PURPOSE		
Why is this service provided?	To assist children under the age of 18 who receive at least \$1 of Supplemental Security Income (SSI) to receive assistance for needed equipment and services.	This program is intended to keep families together; facilitate the return of children to their home; or prevent or delay out-of-home placements. These payments can help families pay for any needed services.
ELIGIBILITY		
Who is eligible for this program?	<p>To be eligible for this program, the child must:</p> <ul style="list-style-type: none"> • Be under the age of 18 (eligibility ends on the child's 18th birthday) • Receive a Supplemental Security Income (SSI) payment of at least \$1 • Live in Oklahoma 	<p>To be eligible for this program, the child must:</p> <ul style="list-style-type: none"> • Be under the age of 18 (eligibility ends on the child's 18th birthday) • Have a developmental disability as defined by Oklahoma law • Have an annual adjusted gross family income of no more than \$45,000 • Be in a family headed by a biological parent, an adoptive parent or a legal guardian • Live in Oklahoma with a biological parent, an adoptive parent or a legal guardian <p>NOTE: The child/family is not eligible if receiving an adoption subsidy or Home and Community Based Waiver services.</p>
SERVICES OFFERED		
What are some examples of these services?	<p>Services offered may include:</p> <ul style="list-style-type: none"> • Adaptive equipment • Audiology • Child care (prior to reaching school age) • Diapers • Formulas (Ensure with fiber, Ensure Plus, Isocal, Isomil, Osmolite and Pediasure) • Professional services • Respite vouchers <p>NOTE: These services are covered under SSI-DCP only if they are not covered by SoonerCare (Medicaid).</p>	<p>Services offered may include:</p> <p>This program is a cash payment of \$250 to \$400 a month to be used at the family's discretion. The payment amount is based on the number of children with developmental disabilities living in the home.</p>

Name of Service	Supplemental Security Income Disabled Children's Program (SSI DCP) <i>continued</i>	Family Support Assistance Payment Program (FSAP) <i>continued</i>
APPLICATION		
How do I apply for this program?	If your child currently receives a Supplemental Security Income payment and is eligible for Medicaid, you may request SSI-DCP services from your local OKDHS worker. Your worker will need to open a Social Service Case, and you will need to bring a copy of the SSI letter verifying your child's disability. If your child is not currently receiving SSI and does have a disability, go to a Social Security office and apply (see page 41).	Call your area Developmental Disabilities Services Division (DDSD) office (see page 40) and tell them you want to apply for FSAP. They will connect you to a DDSD intake worker who will explain the program and send you the Family Support Assistance Payment Services Application form.
PLANNING		
How do I plan for services?	For every child receiving SSI-DCP services, an OKDHS county worker must write a social service plan that includes current and future needs. This plan must be reviewed yearly during the eligibility review.	There is no structured plan. The funds provided supply parents/guardians with a means to make decisions and find solutions that support the family.
Where are services provided?	Services are provided in the home or the community of the person receiving services.	N/A
Who selects the service provider?	Providers are selected by the parent or legal guardian.	N/A
PAYMENT		
How are services paid?	Limited funds are available on an annual basis. Certain services are available for emergency needs or on a temporary basis.	Payments ranging from \$250 to \$400 are made once a month and can be used or spent in any way. The payment amount is based on the number of children with developmental disabilities living in the home.
MONITORING OF SERVICES		
How are services monitored?	Services are monitored through yearly reviews of the social service plan.	Services are reviewed yearly during the child's birth month. When it is time for an annual review, you will receive an Annual Review and Report form. This must be completed and returned by the end of the child's birth month to continue services.

Section 4: Other Services for All Ages

- Oklahoma Respite Resource Network (ORRN)
Respite Voucher Program
- Supplemental Security Income (SSI)
- Social Security Disability Insurance (SSDI)
- Services for Older Persons
- Assistive Technology Services
- Oklahoma Department of Rehabilitation Services (DRS)
- Education Services
- Oklahoma State Department of Health (OSDH) Services
- Mental Health Services

Did you know?

Grandparents age 55 and older who are raising a grandchild may be eligible for services through the Aging Services Division. See [page 27](#) for details.





Oklahoma Respite Resource Network (ORRN) Respite Voucher Program



Purpose

To provide a temporary break for full-time caregivers. You are not eligible for this program if you are receiving any Home and Community Based Waiver services or the Family Support Assistance Payment Program (FSAP).

Eligibility

- **No income limit:**
 - ◇ Grandparents 55 or older raising a grandchild
 - ◇ Spouse caring for a spouse needing assistance with at least two or more of the following areas: personal care, bathing, eating, toileting, transferring or walking. Either spouse must be age 60 or older
 - ◇ Adult children caring for a parent age 60 or older.
- **Caregivers with a yearly income of less than \$60,000:**
 - ◇ Caring for a person with a developmental disability
 - ◇ Caring for a child receiving SSI-DCP (must have an open service case through county OKDHS office)
 - ◇ Caring for a child served through the Strengthening Families Initiative (provided by the Oklahoma State Department of Health)
 - ◇ Married couples who have a child with mental illness, physical disabilities, chronic health problems or developmental disabilities
 - ◇ Grandparent under the age of 55 caring for a grandchild with a developmental disability

Application

If you are eligible for respite with no income limit (see left), apply by calling the Senior Info Line at 1-800-2011-2116 or contact your local AAA (see [page 29](#)). Otherwise, contact your DDSD area office (see [page 40](#)). For caregivers under the age of 60 (who are caring for someone under the age of 60), proof of income is needed (first page of tax return, letter from Social Security or Medicaid). A caregiver of a child with a developmental disability must have written proof of the child's disability. You can download the application at tinyurl.com/blee9es. More information is available at tinyurl.com/bvfdybt.

Services

Services are provided in the form of a respite voucher of \$200-\$400 once every three months based on available funding. Respite vouchers may be used to pay for someone to take care of your loved one while you take a break.

How It Works

Caregivers may hire another family member (cannot live in the same house), friend or anyone they choose who is at least 18 years old to provide respite. Caregivers may also use a day care center on a part-time or drop-in basis (not full-time), summer recreation programs, camps, etc.

Caregiver(s) and the person who provided respite fill out the voucher, sign it and mail it to OKDHS. A check is sent directly to the person who provided the respite care.



Supplemental Security Income (SSI) Social Security Disability Insurance (SSDI)

Supplemental Security Income (SSI)

Eligibility

- Be considered to have a medical disability or be a person who is blind (determined by the Social Security Administration)
- Be a U.S. citizen or Green Card holder
- Not be working, or if working, not performing substantial gainful employment when you apply — if your disability is not blindness

Note: Eligibility is reviewed yearly. You must contact SSA when notified that redetermination is required or your benefits will stop.

Application

Contact your local Social Security office (see [page 41](#)) and ask to apply for SSI. You also may complete a large part of the application online at <http://www.ssa.gov/> or call the hotline at 1-800-772-1213.

Note: Most applicants are denied. It is advisable to reapply or appeal the denial. Applications may take as long as 120 days, and appeals may add 18 months or more.

Benefits

SSI provides a cash payment of a maximum of \$674 per month. Changes in income will affect your benefits. Report income changes to SSA.

***If you qualify for SSI, you may be eligible for the Aid to the Disabled Payment (AD Payment). Contact your local OKDHS office to apply (see [page 42](#)).**

Social Security Disability Insurance (SSDI)

Eligibility

- 18 or older: meet SSA's definition of having a disability
- Under 18: have parent who is deceased and met SSA's definition of having a disability (dependent payment)
- Be a U.S. citizen or Green Card holder
- Adults:
 - ◇ Must have worked 5 out of the previous 10 years before onset of the disability
 - ◇ **OR** have a parent who is deceased and was receiving a Social Security benefit

Note: Eligibility is reviewed yearly. You must contact SSA when notified that redetermination is required or your benefits will stop.

Application

Contact your local Social Security office (see [page 41](#)) and ask to apply for SSDI. You also may complete a large part of the application online at <http://www.ssa.gov/> or call the hotline at 1-800-772-1213.

Note: Some applications take a very long time.

Benefits

SSDI provides a monthly cash payment based on work history and work credits. There is no maximum amount. Small earnings do not affect benefits; however, the time spent working and receiving benefits may affect benefits. Report income changes to SSA.

Contact DRS's Disability Determination Division at 405-419-2200 for help determining medical eligibility for SSI and SSDI.



Services for Older Persons

Area Agency on Aging (AAA)

AAAs act as the entry point for most services for older persons by providing many services, information and assistance, and help to access other services. (See [page 29](#) for contact information.)

An Area Agency on Aging (AAA) is a public or non-profit agency funded through state and Older Americans Act dollars to meet needs of older persons.

The AAA serves citizens ages 60 or older, and is designed to enhance the quality of life for older adults and their families by providing information and assistance about various services in local communities.

AAAs support and coordinate a number of home- and community-based supportive and nutrition services, as well as services for family caregivers.



Aging Services Division

The purpose of the Aging Services Division of the Oklahoma Department of Human Services (OKDHS) is to secure and maintain economic and personal independence and dignity for older persons by providing support and by removing individual and social barriers to independence. The Aging Services Division plans, administers, coordinates and evaluates the statewide system of services for older Oklahomans.

Older Americans Act

The OKDHS Aging Services Division administers the Older Americans Act, which was first passed in 1965 and helps fund home- and community-based services to improve the lives of older Americans. Services funded under the Older Americans Act include information and referral, congregate meals and home-delivered meals, transportation, community-based long-term care, legal services, nursing home ombudsman and help for family caregivers.

Helpful Websites:

- Aging Services Division
<http://www.okdhs.org/programsandservices/aging>
- Family Caregiver Alliance
<http://www.caregiver.org/caregiver/jsp/home.jsp>
- Information about Medicare
<http://www.medicaresolutions.com/>



Services for Older Persons

continued

Application

To request information and services, call your local Area Agency on Aging (AAA). You can be connected to the AAA closest to you by calling the Oklahoma Senior Info-Line at **1-800-211-2116**. Contact information is available on [page 29](#). You also may visit <http://www.okdhs.org/> for information.

Eligibility

- Individuals age 60 and older
- Priority is given to those older adults with the greatest economic or social need.
- Under special conditions, people under 60 may be eligible (e.g., the spouse of an individual over 60, a person 60 or older caring for their adult child with a disability who still lives at home, or a person with early-onset dementia).
- Grandparents age 55 and older are eligible for services if they are raising a grandchild. The grandchild they are raising also may be eligible for SoonerCare (Medicaid).
- In order to qualify for most services for older persons, you must need assistance in two or more of these areas: preparing meals, shopping for personal items, managing medication, managing money, using the telephone, doing housework, making use of available transportation.

Services

Provided statewide:

- congregate and home-delivered meals
- information and referral
- in-home respite care for families, including adult day care as a respite service for families
- long-term care ombudsman
- transportation

These services will vary depending on your AAA:

- chore services such as yard work
- family caregiver support services
- homemaker services such as light housework
- legal services
- mental health screening
- minor repairs or modification of homes necessary to facilitate the ability of older persons to remain at home, and not available under other programs. No more than \$250 per homeowner may be spent annually.
- shopping assistance

Adult Day Care/Services

Adult Day Care/Services is an out-of-home program that provides a variety of health, social and related support services in a protective setting for some portion of a day. This service is offered through the Aging Services Division. You can contact your AAA to find an adult day care in your area.



Area Agencies on Aging (AAAs)

The Senior Info-Line at 1-800-211-2116 will connect you to your local AAA.

AREA	COUNTIES SERVED	AGENCY	PHONE NUMBER	MAILING ADDRESS
1	Craig, Delaware, Mayes, Nowata, Ottawa, Rogers, Washington	Grand Gateway Area Agency on Aging	1-800-482-4594	333 S. Oak St., P.O. Box Drawer B Big Cabin, OK 74332
2	Adair, Cherokee, McIntosh, Muskogee, Okmulgee, Sequoyah, Wagoner	Eastern Oklahoma Development District (EODD) Area Agency on Aging	918-682-7891	1012 N. 38th St., P.O. Box 1367 Muskogee, OK 74402
3	Choctaw, Haskell, Latimer, LeFlore, McCurtain, Pittsburg, Pushmataha	Kiamichi Economic Development District of Oklahoma (KEDDO) Area Agency on Aging	1-800-722-8180	Highway 2 North, P.O. Box 638 Wilburton, OK
4	Atoka, Bryan, Carter, Coal, Garvin, Johnston, Love, Marshall, Murray, Pontotoc	Southern Oklahoma Development Association (SODA) Area Agency on Aging	580-920-1388	224 W. Evergreen St. Durant, OK 74701
5	Hughes, Lincoln, Okfuskee, Pawnee, Payne, Pottawatomie, Seminole	Central Oklahoma Economic Development District (COEDD) Area Agency on Aging	1-800-375-8255 ext. 101 405-273-6410 ext. 101	400 N. Bell Ave., P.O. Box 3398 Shawnee, OK 74802
6	Creek, Osage, Tulsa	Indian Nations Council of Government (INCOG) Area Agency on Aging	918-584-7526	2 W. 2nd St., Suite 800 Tulsa, OK 74103
7	Alfalfa, Blaine, Garfield, Grant, Kay, Kingfisher, Major, Noble	Northern Oklahoma Development Authority (NODA) Area Agency on Aging	1-800-749-1149 580-237-4810	2601 N. Van Buren St. Enid, OK 73703
8	Canadian, Cleveland, Logan, Oklahoma	Areawide Aging Agency, Inc.	405-943-4344 (info line) 405-942-8500	4101 Perimeter Center Dr. #310 Oklahoma City, OK 73112
9	Caddo, Comanche, Cotton, Grady, Jefferson, McClain, Stephens, Tillman	Association of South Central Oklahoma Governments (ASCOG) Area Agency on Aging	1-800-658-1466	802 Main St., P.O. Box 1647 Duncan, OK 73533
10	Beckham, Custer, Greer, Harmon, Kiowa, Jackson, Roger Mills, Washita	South Western Oklahoma Developmental Authority (SWODA) Area Agency on Aging	1-800-627-4882 580-562-4882	Bldg. 420 Sooner Dr., P.O. Box 569 Burns Flat, OK 73624
11	Beaver, Cimarron, Dewey, Ellis, Harper, Texas, Woods, Woodward	Oklahoma Economic Development Authority (OEDA) Area Agency on Aging	580-625-4531	330 Douglas Ave., P.O. Box 668 Beaver, OK 73932



Assistive Technology Services

Oklahoma ABLE Tech

Oklahoma ABLE Tech promotes the availability of assistive technology (AT) devices and services for people with disabilities. AT is any item or piece of equipment used to maintain or improve the capabilities of people with disabilities.

Programs include:

- **Device demonstration centers** – give individuals a chance to see, touch and try assistive technology devices to help individuals compare features and to help in the decision making process.
- **Device short-term loan program** – allows individuals to borrow AT in order to “try before you buy.”
- **AT reutilization** – The Oklahoma Equipment Exchange can help you recycle your equipment and provide a way to locate assistive technology at a reasonable price.

Website: <http://oec.okstate.edu/home.php>

- **Low-interest bank loans**

OK FUNDING for AT: A Guide to Solving the Funding Puzzle and Getting Assistive Technology in Oklahoma describes possible public and private sources of funding and strategies to obtain funding for assistive technology from these sources. It is well organized and designed to be simple to use.

Website: <http://www.ok.gov/abletech/documents/FundingManual2011.pdf>

OSU Seretean Wellness Center
1514 W. Hall of Fame Ave. Stillwater, OK 74078
Phone: 405-744-9748 or 1-800-257-1705
INFO-line: 1-888-885-5588 V/TTY
E-mail: abletech@okstate.edu
Website: <http://www.ok.gov/abletech/>

Oklahoma Assistive Technology Center (OATC)

OATC offers a variety of services for public school students with disabilities who may benefit from assistive technology as part of their educational program through a contract with the Oklahoma State Department of Education, Special Education Services.

Website: <http://www.theoatc.org/>

1600 N. Phillips Ave.
Oklahoma City, OK 73104
Phone: 405-271-3625; TDD 405-271-1705
1-800-700-6282
Fax: 405-271-1707

4502 E. 41st St.
Tulsa, OK 74135
Phone: 918-660-3281
Fax: 918-660-3297

Practical Assisted Living Systems (P.A.L.S.)

2904 Pine Ridge Rd.
Oklahoma City, OK 73120
Phone: 405-752-4241 Voice
Fax: 405-752-4636
E-mail: vmnowl@juno.com

Volunteers work closely with therapists, medical professionals and special educators to develop low-cost technology solutions for unique needs of individuals with disabilities. Client reimbursement of materials costs is appreciated, but there is no fee for the design work.



Oklahoma Department of Rehabilitation Services (DRS)

The Oklahoma Department of Rehabilitation Services (DRS) expands opportunities for employment, independent life and economic self-sufficiency by helping Oklahomans with disabilities bridge barriers to success in the workplace, at school and at home.

DRS is composed of five program divisions:

- **Division of Vocational Rehabilitation (DVR):** Employment services for people with any disability, except blindness and diabetes.
- **Division of Visual Services (DVS):** Employment and independent living services for people who are blind, visually impaired or have diabetes.
- **Disability Determination Division:** Determines medical eligibility for Social Security Disability Insurance (SSDI) and Supplemental Security Income (SSI).
- **Oklahoma School for the Deaf:** Educational programs for children who are deaf or hard of hearing.
- **Oklahoma School for the Blind:** Educational programs for children who are blind or visually impaired.

DRS also has a *Disability Resource Guide*, which provides program descriptions and contact information designed to help Oklahomans solve disability-related problems. It is available online at www.okrehab.org/guide/indexmanual.html.

Contact Information:

To connect to the DRS office in your area call **1-800-845-8476**.

Oklahoma Department of Rehabilitation Services

3535 N.W. 58th St., Suite 500
Oklahoma City, OK 73112
Phone: 405-951-3400
E-mail: info@okdrs.gov
Website: www.okrehab.org

Oklahoma School for the Deaf

1100 E. Oklahoma St.
Sulphur, OK 73086
Phone: 580-622-4900

Oklahoma School for the Blind

3300 Gibson St.
Muskogee, OK 74403
Phone: 918-781-8200

Oklahoma Library for the Blind and Physically Handicapped

300 N.E. 18th St.
Oklahoma City, OK 73105
Phone: 405-521-3514 or
1-800-523-0288



Education Services

Oklahoma State Department of Education (OSDE)

2500 N. Lincoln Blvd.
Oklahoma City, OK 73105
Phone: 405-521-3301

Special Education Services

Phone: 405-521-3351
Website: <http://www.sde.state.ok.us/>

OSDE funds and supervises a number of programs, such as:

- SoonerStart (see [pages 18-19](#))
- Oklahoma Parents as Teachers (see below)

It also provides:

- Oversight of school districts and local education agencies
- Assistance to professionals in developing appropriate educational services

Oklahoma Parents as Teachers (OPAT)

405-521-3346
<http://www.sde.state.ok.us/programs/eceduc/opat.html>

OPAT provides parent education for expectant parents and parents of children from birth to age 3 in participating school districts. The purpose is to increase parents' ability to be effective first teachers. Services may include:

- Personalized home visits
- Developmental screenings
- Support groups
- Resources and referrals

Contact your local school district to enroll.

Oklahoma Head Start and Early Head Start

2800 N.W. 36th St., Suite 90
Oklahoma City, OK 73106
Phone: 405-949-1495
Website: <http://www.okcaa.org/headstart/>

These programs provide a comprehensive program of child care, education, health, mental health, nutrition, parent involvement and services for children with disabilities. Early Head Start is for children from birth to age 3; Head Start is for children age 3-5. Eligibility is based on family income.

Oklahoma Parents Center, Inc. (OPC)

Phone: 1-877-553-4332
Website: <http://www.oklahomaparentscenter.org/>
OPC provides training, information and technical assistance for families of children with disabilities from birth to age 26 in order to help parents advocate successfully for their child. They offer a Special Education Help Line.

Oklahoma Disability Law Center, Inc. (ODLC)

2915 Classen Blvd., Suite 300
Oklahoma City, OK 73106
Phone: 1-800-880-7755 (OKC) 1-800-226-5883 (Tulsa)
Website: <http://www.okdlc.org/>

ODLC provides free civil legal services to children and adults with disabilities or mental illness.



Oklahoma State Department of Health (OSDH) Services

Available services may differ between county health departments, and some services may have eligibility requirements. Contact your county health department (see [pages 34-36](#)) for more information about services.

Services provided at your county health department may include:

- Breast and Cervical Cancer Early Detection Program
- Developmental screenings and therapy
- Family/child counseling
- Family planning
- Genetic counseling
- Immunizations
- Medical treatment clinics
- Nutritional counseling
- Parenting skills education
- Prenatal care
- Speech, language and audiological services
- Treatment of sexually transmitted disease
- Tuberculosis testing and treatment
- Well Baby and child check-ups
- WIC infant formula and food vouchers

Additional programs offered through OSDH:

Child Guidance

The purpose of the Child Guidance program is to build healthy family relationships and enhance child development. The program provides behavioral health services, childhood development and parent education services, and speech-language services. Services are provided on a sliding fee scale based on income and size of the family.

Currently this program is available at the following county health departments (see [pages 34-36](#) for contact information):

Bryan	Comanche	Muskogee	Pottawatomie
Canadian	Garfield	Oklahoma	Rogers
Carter	Kay	Payne	Texas
Cleveland	LeFlore	Pittsburg	Tulsa

Children First

Children First is a program aimed at helping mothers expecting their first child to deliver a healthy baby. The program provides home visits from a public health nurse that begin before the 29th week of pregnancy and can continue until the child's second birthday. Services provided during the home visits may include:

- Brief health assessments
- Child growth and development evaluations
- Nutrition education
- Parenting and relationship information
- Links to other services such as child care, education and job training

In order to be eligible, the mother must be less than 29 weeks pregnant, be expecting her first child and meet Medicaid and WIC income guidelines. Call your county health department or 405-271-7611 for more information.

County Health Departments

Adair

Stilwell, OK 918-696-7292

Alfalfa c/o Woodward

Woodward, OK 580-256-6416

Atoka

Atoka, OK 580-889-2116

Beaver

Beaver, OK 580-625-3693

Beckham

Sayre, OK 580-928-5551
Elk City, OK 580-225-1173

Blaine

Watonga, OK 580-623-7977

Bryan

Durant, OK 580-924-4285

Caddo

Anadarko, OK 405-247-2507

Canadian

El Reno, OK 405-262-0042
Yukon, OK 405-354-4872

Carter

Ardmore, OK 580-223-9705
Healton, OK 580-229-1291

Cherokee

Tahlequah, OK 918-456-8826

Choctaw

Hugo, OK 580-326-8821

Cleveland

Norman, OK 405-321-4048
Moore, OK 405-794-1591

Coal

Coalgate, OK 580-927-2367

Comanche

Lawton, OK 580-248-5890

Cotton

Walters, OK 580-875-6121

Craig

Vinita, OK 918-256-7531

Creek

Sapulpa, OK 918-224-5531
Bristow, OK 918-367-3341
Drumright, OK 918-352-9581

Custer

Clinton, OK 580-323-2100
Weatherford, OK 580-772-6417

Delaware

Jay, OK 918-253-4511

Garfield

Enid, OK 580-233-0650

Garvin

Pauls Valley, OK 405-238-7346
Lindsay, OK 405-756-2928

Grady

Chickasha, OK 405-224-2022

Grant

Medford, OK 580-395-2906

Greer

Mangum, OK 580-782-5531

Harmon

Hollis, OK 580-688-3348

Harper

Buffalo, OK 580-735-6100
Laverne, OK 580-921-2029

Haskell

Stigler, OK 918-967-3304

Hughes

Holdenville, OK 405-379-3313

Jackson

Altus, OK 580-482-7308

Jefferson

Waurika, OK 580-228-2313

Johnston

Tishomingo, OK 580-371-2470

County Health Departments

continued

Kay

Ponca City, OK 580-762-1641
Blackwell, OK 580-363-5520

Kingfisher

Kingfisher, OK 405-375-3008

Kiowa

Hobart, OK 580-726-3316

Latimer

Wilburton, OK 918-465-5673

LeFlore

Poteau, OK 918-647-8601
Talihina, OK 918-567-2141

Lincoln

Chandler, OK 405-258-2640

Logan

Guthrie, OK 405-282-3485

Love

Marietta, OK 580-276-2531

Major

Fairview, OK 580-227-3362

Marshall

Madill, OK 580-795-3705

Mayes

Pryor, OK 918-825-4224

McClain

Purcell, OK 405-527-6541
Blanchard, OK 405-485-3319

McCurtain

Idabel, OK 580-286-6628

McIntosh

Eufaula, OK 918-689-7774
Checotah, OK 918-473-5416

Murray

Sulphur, OK 580-622-3716

Muskogee

Muskogee, OK 918-683-0321

Noble

Perry, OK 580-336-2257

Okfuskee

Okemah, OK 918-623-1800

Oklahoma City-County Health Dept.

921 N.E. 23rd St. 405-427-8651 (Main)
405-425-4384 (for WIC appts in Ok. County)

Oklahoma City-County Health Dept.

Capitol Hill

210 W. Commerce St. 405-230-1942

Oklahoma City-County Health Dept.

East

6912 E. Reno Ave. 405-419-4116 (M,W,Th,F)

Oklahoma City-County Health Dept.

Emerson Teen Parent Program

720 N. Dewey Ave. 405-425-4384 (Tu-F)
405-236-8172 (M)

Oklahoma City-County Health Dept.

North

36 W. Memorial Rd., Suite B8 405-419-4065

Oklahoma City-County Health Dept.

Shepherd Mall

2401 N.W. 23rd St., Suite 65
405-425-4384 (M, Th)

Oklahoma City-County Health Dept.

West

4330 N.W. 10th St. 405-419-4182

Okmulgee

Okmulgee, OK 918-756-1883
Henryetta, OK 918-652-8250
Beggs, OK 918-267-3606

County Health Departments

continued

Osage

Pawhuska, OK 918-287-3740 or
1-866-987-3740

Ottawa

Miami, OK 918-540-2481

Pawnee

Pawnee, OK 918-762-3643
Cleveland, OK 918-358-2546

Payne

Stillwater, OK 405-372-8200
Cushing, OK 918-225-3377

Pittsburg

McAlester, OK 918-423-1267

Pontotoc

Ada, OK 580-332-2011

Pottawatomie

Shawnee, OK 405-273-2157

Pushmataha

Antlers, OK 580-298-6624
Clayton, OK 918-569-7973

Rogers

Claremore, OK 918-341-3166

Seminole

Wewoka, OK 405-257-5401
Seminole, OK 405-382-4369

Sequoyah

Sallisaw, OK 918-775-6201

Stephens

Duncan, OK 580-252-0270

Texas

Guymon, OK 580-338-8544

Tillman

Frederick, OK 580-335-2163

Tulsa City-County Health Dept.

5051 S. 129th E. Ave. 918-595-4400

Wagoner

Wagoner, OK 918-485-3022
Coweta, OK 918-486-2845

Washington

Bartlesville, OK 918-335-3005

Washita c/o Logan

Guthrie, OK 405-282-3485

Woods

Alva, OK 580-327-3192

Woodward

Woodward, OK 580-256-6416

Regional SoonerStart Offices

Ardmore

580-223-9705

Chickasha

405-224-1050

Clinton

580-323-2100

Durant

580-332-2011

McAlester

918-423-1267

Muskogee

918-683-0321

Norman

405-321-4048

Oklahoma City

405-271-9477

Tahlequah

918-458-6577

Tulsa

918-835-8691



Mental Health Services

Oklahoma Department of Mental Health and Substance Abuse Services (ODMHSAS)

405-522-3908 1-800-522-9054

Office of Consumer Advocacy: 1-866-699-6605

<http://ok.gov/odmhsas/>

Call the Reach Out Hotline at 1-800-522-9054 for the location of your local Community Mental Health Center, which may provide the following services:

- Chemical dependency counseling
- Evaluation
- Domestic violence shelters
- *Systems of Care* wraparound services (see [pages 38-39](#))
- Individual and group counseling
- Family counseling
- Crisis intervention

Area Prevention Resource Centers (APRC)

These sites provide information, assistance and training to youth, parents, teachers, civic leaders, law enforcement, clergy and others who influence or motivate other adults and young people. Call the Reach Out Hotline at 1-800-522-9054 for the APRC that serves your county.

National Alliance on Mental Illness (NAMI) – Oklahoma

405-230-1900 1-800-583-1264

4200 Perimeter Center Dr., Suite 150 Oklahoma City, OK 73112

<http://www.nami.org/>

E-mail: namiok@coxinet.net

NAMI-Oklahoma offers support, advocacy and education for people with brain disorders, their families and their friends. It is also a resource for information and referral for other related services.

Oklahoma Federation of Families for Youth and Children’s Mental Health

405-364-8879 1-866-837-9122

1692 E. Redbud Pl. Washington, OK 73093

<http://www.okfederation.org/>

The Oklahoma Federation of Families provides education, information and support to families and caregivers of children and youth with emotional, behavioral or other mental health related issues.

Systems of Care by County

Oklahoma Department of Mental Health and Substance Abuse Services

Systems of Care provides wraparound services to children and adolescents with mental health needs and their families. It includes both mental health services and other support services that are provided through an individualized plan. The plan is developed through a collaboration between the child, the family and professionals, and the services focus on both the needs of the child and the needs of the family. Call 405-522-4151 or visit the website on the bottom of the page for more information.

Adair

Sallisaw, OK 918-696-5536

Beckham

Elk City, OK 580-225-5136, Ext. 2316

Blaine

Watonga, OK 580-623-7199

Bryan

Durant, OK 580-924-6263

Canadian

El Reno, OK 405-422-8814

Carter

Ardmore, OK 580-223-2537

Cherokee

Tahlequah, OK 918-207-3032

Choctaw

Hugo, OK 580-298-2830 or
580-286-1092

Cleveland

909 E. Alameda St. Norman, OK
405-573-3811
1120 E. Main St. Norman, OK
405-573-3903

Comanche

Lawton, OK 580-248-5780

Craig

Miami, OK 918-342-0770, Ext. 0 or
918-857-4732

Creek

Sapulpa, OK 918-698-5203

Custer

Clinton, OK 580-323-6021, Ext. 2245

Delaware

Miami, OK 918-342-0770, Ext. 0 or
918-857-4732

Garfield

Enid, OK 580-234-3791

Grady

Chickasha, OK 405-222-0622

Harper

Woodward, OK 580-254-5322

Jackson

Altus, OK 580-482-2809

Johnston

Ardmore, OK 580-223-5070

Kay

Ponca City, OK 580-762-7561, Ext. 232

LeFlore

Poteau, OK 918-647-8457 or
918-286-5045

Lincoln

Chandler, OK 405-275-7100, Ext. 2511

Logan

Guthrie, OK 405-282-5524

Love

Marietta, OK 580-223-2537

Mayes

Pryor, OK 918-825-1405, Ext. 0

McClain

909 E Alameda Norman, OK
405-573-3811
1120 E Main Norman, OK

Systems of Care by County

Oklahoma Department of Mental Health and Substance Abuse Services

McCurtain

Idabel, OK 580-286-5045 or
580-286-1092

McIntosh

Eufaula, OK 918-682-8407

Muskogee

Muskogee, OK 918-682-8407

Noble

Perry, OK 580-336-5200

Nowata

Nowata, OK 918-273-1841, Ext. 0 or
918-857-4732

Okfuskee

Okemah, OK 918-698-5203

Oklahoma

4400 N. Lincoln Blvd. Oklahoma City, OK
405-425-0457

4436 N.W. 50th St. Oklahoma City, Ok
405-858-2882

Okmulgee

Okmulgee, OK 918-698-5203

Osage

Pawhuska, OK 580-336-5200

Osage

Pawhuska, OK 580-336-5200

Ottawa

Miami, OK 918-342-0770, Ext. 0
918-857-4732

Pawnee

Okmulgee, OK 918-698-5202

Payne

Stillwater, OK 405-372-1250

Pontotoc

Ada, OK 580-235-0210

Pottawatomie

Shawnee, OK 405-275-7100, Ext.2511

Pushmataha

Antlers, OK 580-298-2830 or
580-286-1092

Roger Mills

Elk City, OK 580-225-5136, Ext. 2316

Rogers

Claremore, OK 918-342-0770, Ext. 0 or
918-857-5873

Texas

Okemah, OK 918-623-1800

Seminole

Wewoka, OK 580-279-9299 or
1-888-730-9030

Sequoyah

Sallisaw, OK 918-775-7787, Ext. 2332

Texas

Guymon, OK 580-254-5322 or
580-338-2117, Ext. 3

Tulsa

7010 S. Yale Ave., Suite 100 Tulsa, OK
918-688-5858 or 918-492-2554, Ext. 340

550 S. Peoria Ave. Tulsa, OK
918-382-2205

Wagoner

Okmulgee, OK 918-698-5202

Washington

Bartlesville, OK 918-335-1111, Ext. 225

Washita

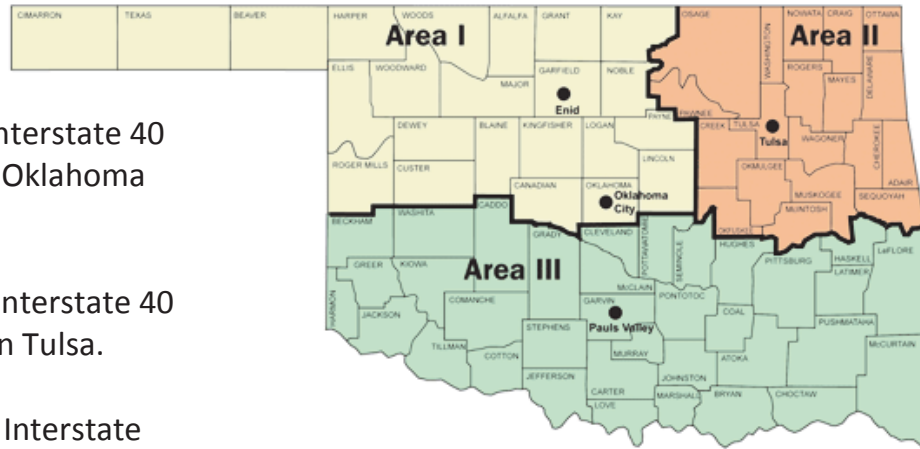
Clinton, OK 580-323-6021, Ext. 2245

Woodward

Woodward, OK 580-254-5322

Developmental Disabilities Services Division (DDSD) Area Offices

- **Area I** includes the area to the north of Interstate 40 and west of Interstate 35, with offices in Oklahoma City and Enid.
- **Area II** includes the area to the north of Interstate 40 and east of Interstate 35, with an office in Tulsa.
- **Area III** includes the area to the south of Interstate 40, with an office in Pauls Valley.



AREA	PHONE NUMBER	FAX NUMBER	MAILING ADDRESS
I	405-522-6925 1-800-522-1064	405-522-6995	2401 N.W. 23rd St., Suite 28 Oklahoma City, OK 73107
I	580-548-8900	580-548-8964	729 Overland Trail Enid, OK 73703
II	918-560-4848 1-800-522-1075	918-560-4898	1427 E. 8th St. Tulsa, OK 74120
III	405-238-4700 1-800-522-1086	405-238-4745	301 S. Indian Meridian Rd. Pauls Valley, OK 73075

Social Security Offices



Ada

921 Lonnie Abbott Blvd.
1-888-810-1940

Ardmore

321 S. Holiday Dr.
1-888-619-4774

Bartlesville

900 Leisure Ln.
1-877-836-1557

Chickasha

506 W. Utah Ave.
1-877-622-9096

Clinton

410 Opal Ave.
1-877-405-9345

Durant

121 S. 12th Ave.
1-866-495-0042

Enid

2202 N. Van Buren St.
1-877-405-0436

Main Social Security Number: 1-800-772-1213

TTY: 1-800-325-0778

Hugo

2400 E. Jackson St.
1-888-487-0145

Lawton

1610 S.W. Lee Blvd.
1-866-931-2732

McAlester

902 S. George Nigh Expy.
1-877-893-4665

Miami

2108 Denver Harner Dr.
1-888-878-0013

Moore

200 N.E. 27th St.
1-866-964-4260

Muskogee

2401 W. Shawnee St.
1-877-575-5195

Oklahoma City

Shepherd Mall
2401 N.W. 23rd St., Suite 20
1-866-331-2207

Okmulgee

308 Creek Pl.
1-855-287-4791

Poteau

1306 Tarby Rd.
1-877-405-7697

Shawnee

909 E. Federal St.
1-877-897-0604

Stillwater

Lakeview Plaza
518 E. Lakeview Rd.
1-888-366-6143

Tulsa

4750 S. Garnett Rd.
1-866-931-7106

For more information, visit this website: www.ssa.gov.

[Go to Table of Contents](#)

Oklahoma Department of Human Services (OKDHS)

County Offices

Adair

Stilwell, OK 918-696-7736
1-800-225-0049

Alfalfa

Cherokee, OK 580-596-3335
1-866-294-3936

Atoka

Atoka, OK 580-889-3394
1-800-225-0051

Beaver

Beaver, OK 580-625-3441
1-800-225-0092

Beckham

Sayre, OK 580-928-4000
1-800-225-0098

Blaine

Watonga, OK 580-623-2000
1-800-808-8961

Bryan

Durant, OK 580-931-2500
1-800-225-0062

Caddo

Anadarko, OK 405-247-4000
1-800-225-0053

Canadian – El Reno

El Reno, OK 405-295-2000
1-800-572-6845

Canadian – Yukon

El Reno, OK 405-295-2000
1-866-806-1056

Carter

Ardmore, OK 580-490-3600
1-800-815-7558

Cherokee

Tahlequah, OK 918-207-4500
1-800-225-9868

Choctaw

Hugo, OK 580-317-2900
1-800-225-0076

Cimarron

Boise City, OK 580-544-2512
1-800-572-6838

Cleveland – Moore, OK

405-912-2000
1-877-207-7317

Cleveland – Norman, OK

405-573-8300
1-800-572-6823

Coal

Coalgate, OK 580-927-2379
1-800-572-6829

Comanche

Lawton, OK 580-250-3600
1-800-572-6841

Cotton

Walters, OK 580-875-4000
1-800-572-6830

Craig

Vinita, OK 918-713-5000
1-800-572-6844

Creek

Sapulpa, OK 918-746-3300
1-800-572-6834

Custer

Clinton, OK 580-331-1900
1-800-572-6846

Delaware

Jay, OK 918-253-4213
1-800-433-6772

Dewey

Taloga, OK 580-328-5546
1-800-433-6967

Ellis

Arnett, OK 580-885-7546
1-800-433-6773

Garfield

Enid, OK 580-548-2100
1-800-433-7074

Garvin

Pauls Valley 405-238-6461
1-800-433-6846

Grady

Chickasha, OK 405-574-7400
1-800-433-7075

Grant

Medford, OK 580-395-3312
1-800-433-6909

Greer

Mangum, OK 580-782-1000
1-800-433-7076

Harmon

Hollis, OK 580-688-3361
1-800-433-6945

Harper

Buffalo, OK 580-735-2541
1-800-433-7079

Haskell

Stigler, OK 918-967-4658
1-800-638-3641

Hughes

Holdenville, OK 405-379-7231
1-800-493-7980

Jackson

Altus, OK 580-480-3400
1-800-493-7974

Jefferson

Waurika, OK 580-228-3581
1-800-493-7981

Johnston

Tishomingo, OK 580-371-4000
1-800-493-7975

Kay

Ponca City, OK 580-763-6700
1-800-493-7982

Kingfisher

Kingfisher, OK 405-375-3867
1-800-493-7976

Kiowa

Hobart, OK 580-726-6500
1-800-493-7983

Latimer

Wilburton, OK 918-465-5800
1-800-493-7978

LeFlore

Poteau, OK 918-649-2300
1-800-493-7960

Lincoln

Chandler, OK 405-258-6800
1-800-493-7984

Oklahoma Department of Human Services (OKDHS)

County Offices *continued*

Logan

Guthrie, OK 405-264-2700

Love

Marietta, OK 580-276-3383
1-800-815-7558

Major

Fairview, OK 580-227-3759
1-800-815-7571

Marshall

Madill, OK 580-795-8100
1-800-815-7567

Mayer

Pryor, OK 918-824-4900
1-800-815-7572

McClain

Purcell, OK 405-527-6511
1-800-815-7570

McCurtain

Idabel, OK 580-208-3400
1-800-815-7562

McIntosh

Eufaula, OK 918-689-1200
1-800-219-3238

Murray

Sulphur, OK 580-622-2186
1-800-815-7568

Muskogee

Muskogee, OK 918-684-5300
1-800-815-7573

Noble

Perry, OK 580-336-5581
1-800-815-7569

Nowata

Nowata, OK 918-273-2327
1-800-815-7574

Okfuskee

Okemah, OK 918-623-1363
1-800-884-1528

Oklahoma – Crossroads

Oklahoma City, OK 405-604-8800
1-866-231-8394

Oklahoma – Kelley

Oklahoma City, OK 405-522-5818
1-800-884-1534

Oklahoma – Mayfair

Oklahoma City, OK 405-602-5700
1-866-289-8008

Oklahoma – Midwest City

Midwest City, OK 405-739-8000
1-800-884-1579

Oklahoma – Rockwell

Bethany, OK 405-470-6200
1-800-884-1534

Oklahoma – Southwest

Oklahoma City, OK 405-644-5700
1-800-884-1532

Okmulgee

Okmulgee, OK 918-752-2000
1-800-884-1582

Osage

Pawhuska, OK 918-287-5800
1-800-884-1573

Ottawa

Miami, OK 918-541-2400
1-800-884-1715

Pawnee

Pawnee, OK 918-762-3606
1-800-270-0786

Payne

Stillwater, OK 405-707-3700
1-800-270-0797

Pittsburg

McAlester, OK 918-421-6100
1-800-270-0792

Pontotoc

Ada, OK 580-310-7050
1-800-270-0798

Pottawatomie

Shawnee, OK 405-878-4000
1-800-270-0793

Pushmataha

Antlers, OK 580-298-3361
1-800-270-0803

Roger Mills

Cheyenne, OK 580-497-3393
1-800-270-0794

Rogers

Claremore, OK 918-283-8300
1-800-270-0804

Seminole

Wewoka, OK 405-257-7400
1-800-270-0796

Sequoyah

Sallisaw, OK 918-776-8000
1-800-270-0805

Stephens

Duncan, OK 580-251-8300
1-800-734-7506

Texas

Guymon, OK 580-338-8592
1-800-734-7514

Tillman

Frederick, OK 580-335-6800
1-800-734-7507

Tulsa – Downtown

Tulsa, OK 918-581-2401
1-800-734-7516

Tulsa – McLain

Tulsa, OK 918-430-2300
1-800-734-7509

Tulsa – Skyline

Tulsa, OK 918-280-3100
1-800-734-7516

Wagoner

Wagoner, OK 918-614-5000
1-800-734-7518

Washington

Bartlesville, OK 918-338-5700
1-800-734-7512

Washita

Cordell, OK 580-832-3391
1-800-734-7519

Woods

Alva, OK 580-430-3100
1-800-734-7513

Woodward

Woodward, OK 580-254-6000
1-800-734-7520

GLOSSARY

<p>Adaptive Equipment/ Assistive Technology (AT)</p>	<p>Services that provide for evaluation, purchase, rental, customization, maintenance and repair of specialized equipment for eligible people, based on availability of resources. Equipment provided through this service includes: (1) mobility and positioning devices such as: wheelchairs, travel chairs, walkers, positioning systems, ramps, wheelchair lifts, bath seats, bath lifts, specialized beds, corner chairs or feeding chairs; (2) orthodontic and prosthetic devices such as: braces and prescribed modified shoes; (3) augmentative or alternative communication aids such as: language boards or electronic communication aides; and (4) environmental controls such as: devices to turn on and off appliances, use a telephone or open doors.</p>
<p>Adult Day Care/ Services</p>	<p>Provides a variety of health, social and related support services in a protective setting for some portion of a day. Individuals who participate in adult day services attend on a planned basis during specified hours. It is designed to meet the needs of older persons with functional impairments, generally those age 60 and older, through an individualized plan of care. It is offered through the Aging Services Division.</p> <p>Note: Adults receiving services through DDSD In-Home and Community waivers are eligible for this program also.</p>
<p>Adult Day Health Care/Services</p>	<p>Provides both health and social services which are necessary to ensure the optimal functioning of the individual. Most assistance with activities of daily living, such as eating and bathing, are services that are integral to the Adult Day Health Care service and are covered by the Adult Day Health Care basic reimbursement rate through the Advantage Waiver. Furnished on a regularly scheduled basis for one or more days per week, at least four hours per day in an outpatient setting.</p>
<p>ADvantage Waiver</p>	<p>A Medicaid Home and Community Based Waiver used to finance community-based long-term care services for the elderly and a targeted group of adults with physical disabilities who meet Medicaid eligibility for care in a nursing home. ADvantage program recipients must be Medicaid eligible and must not reside in an institution, room and board facility, licensed residential care facility or licensed assisted living facility.</p>
<p>Agency Companion</p>	<p>Provides an individualized living arrangement with a companion that offers up to 24 hours of supervision, supportive assistance and training in daily living skills. (Only offered through DDSD Community Waiver)</p>
<p>Architectural Modifications</p>	<p>See environmental modifications (page 46).</p>

Audiologist	A person holding a license as an audiologist from the Oklahoma State Board of Examiners for Speech-Language Pathology to provide evaluation, treatment and consultation in hearing.
Audiology Services	Hearing services that may include evaluation, consultation and treatment.
Caregiver	A family member who provides care for a loved one with a chronic illness, physical disability, cognitive impairment or dementia.
Case Management	Services that assist a person in gaining access to medical, social, educational or other services that may benefit the person in maintaining health and safety.
Case Manager	A professional who is responsible for assuring that services to an individual are planned and provided in a coordinated fashion. Additional responsibilities include independent advocacy, brokerage and monitoring activities with, and on behalf of, people receiving services.
Centers for Medicare and Medicaid Services (CMS)	The federal agency that administers Medicare and Medicaid.
Child Health Services	Child Health Services is the new name for the Early Periodic Screening, Diagnosis and Treatment Unit at the Oklahoma Health Care Authority. (See also EPSDT)
Developmental Disabilities Services Division	Provides services to individuals ages 3 and older who have an intellectual disability (IQ of below 70). People served also may have other developmental or physical disabilities. See page 40 for area offices' contact information.
Developmental Disability	A physical or mental impairment that begins before age 22 and alters or substantially inhibits a person's capacity to do at least three of the following: (1) take care of themselves – dress, bathe, eat, etc.; (2) speak and be understood clearly; (3) learn; (4) walk or move around; (5) make decisions; (6) live on their own; or (7) earn and manage an income.

Durable Medical Equipment (DME)	Equipment which can withstand repeated use, is used to serve a medical purpose, is not useful to a person in the absence of an illness or injury, and is used in the most appropriate setting, including the home or workplace.
Early and Periodic Screening, Diagnosis and Treatment (EPSDT)	A preventive health program which provides comprehensive medical services to eligible individuals under 21 years of age. The purpose of the EPSDT program is to identify and treat physical, mental or emotional illnesses or conditions in order to prevent or reduce human suffering and economic loss. Individuals who receive EPSDT screenings are eligible for all necessary follow-up care within the scope of the Oklahoma Title XIX Program. They also are eligible for necessary follow-up care beyond the scope of the Oklahoma Title XIX Program when the required care can be provided with federal Medicaid matching funds and the services are pre-authorized by the Oklahoma Health Care Authority. (See also Child Health Services on page 45)
Environmental Modifications (Home Modifications)	Physical adaptations to the home, required by the person's plan of care, which are necessary to ensure the health and safety of the individual, or which enable the individual to function with greater independence in the home and without which the individual would require institutionalization. Such adaptations are the same as described under OAC 317:30-5-763(4)(A) and may include the installation of ramps and grab-bars, widening of doorways, modification of bathroom facilities or installation of specialized electric and plumbing systems which are necessary to accommodate the medical equipment and supplies necessary for the health of the individual.
Family Support Assistance Program (FSAP)	This is a cash payment program for families who are caring for children under age 18 at home. Families can receive payments of \$250-\$400 per month depending on the number of children with disabilities in the home. Annual household income cannot exceed \$45,000.
Family Training	Activities designed to equip family members, significant others and people with a developmental disability with knowledge and skills that allow a family member with developmental disabilities to remain in or return to his or her home. (Offered through Home and Community Based Waivers)
Group Home	Single-family community homes that provide living arrangements for 4 to 12 people, age 18 or older, who share a home and receive up to 24 hours per day of supervision, support and training in daily living skills.

Habilitation Services	Services directed toward the maintenance or enhancement of skills, and defined within behavioral goals and objectives within the Individual Plan (IP). Authorized habilitation services include: physical therapy, occupational therapy, speech therapy, psychiatric services, psychological services, audiological examination and treatment, and habilitation training.
Habilitation Training Specialist (HTS)	Person who provides habilitation services.
Home and Community Based Waiver	Allows for someone to live in the community instead of institutions or nursing homes. The Community Waiver; In-Home Supports Waiver for Children and Adults; Advantage Waiver; Living Choice Demonstration; My Life, My Choice Waiver; Sooner Seniors Waiver; and Medically Fragile Waiver all are Home and Community Based Waivers.
Homemaker Services	Include preparing a meal; shopping for personal items; managing money; using the telephone; or doing light housework, which is limited to: dusting; vacuuming; mopping floors; cleaning bathroom and kitchen; making beds; and maintaining a safe environment.
Hospice	A way of caring for people who are terminally ill and their family. This care includes physical care, counseling, medications and equipment.
Individual Plan (IP)	A plan developed by a team based upon assessment of need. It specifies all the goals and objectives being pursued on behalf of the individual, the steps being taken to achieve them and all of the services provided by each agency.
In-Home Supports Waivers (IHSW)	For Children and Adults – provides services to those determined to have a disability, with a diagnosis of an intellectual disability (mental retardation) by the Social Security Administration or the Oklahoma Health Care Authority, Level of Care Evaluation Unit. In order to be eligible a person must: be three years of age or older; be determined by the Oklahoma Health Care Authority, Level of Care Evaluation Unit, to meet the ICF-MR Institutional Level of Care requirements (see page 48); reside in the home of a family member or friend, his or her own home, an OKDHS Children and Family Services Division (CFSD) foster home, or a CFSD group home; and have critical support needs that can be met through a combination of non-paid, non-Waiver, and State Plan resources available to the individual, and within the annual per capita waiver limit agreed between the State of Oklahoma and the Centers for Medicare and Medicaid Services.

Institution	A privately or publicly run facility in which people with intellectual disabilities reside and receive personal care. Public institutions include the Northern Oklahoma Resource Center in Enid (NORCE) and the Southern Oklahoma Resource Center (SORC) in Pauls Valley. An institution is sometimes called an Intermediate Care Facility for persons with Mental Retardation (ICF-MR).
Institutional Level of Care	<p>The level of care provided by a long-term care facility to a person based on the nature of the health problem requiring care and the degree of involvement in nursing services/care needed from personnel qualified to give this care.</p> <p>(1) <u>ICF-MR</u>: Care provided by a facility to individuals who require care and activities treatment due to an intellectual disability (mental retardation), or developmental disability combined with one or more disabilities. The intellectual or developmental disability must have originated during the individual's developmental years (prior to 22 years of age).</p> <p>(2) <u>Nursing Facility</u>: Care provided by a nursing facility to individuals who require 24-hour professional nursing supervision and a maximum amount of non-professional nursing care due to physical conditions or a combination of physical and mental conditions.</p> <p>(3) <u>Hospital</u>: Care provided by a hospital to individuals who have a documented medical condition that requires 24-hour supervision by a medical physician. The medical condition must require the care and treatment services normally provided in an acute medical hospital.</p> <p>Note: If applying for TEFRA, make sure your child's physician indicates the recommended Level of Care on the TEFRA-1 Assessment form.</p>
Intake Worker (DDSD)	Staff that provides answers to specific service inquiries; assists in the identification of needs in times of crisis; supplies information regarding the range and means of accessing available services; provides assistance as necessary in service application; facilitates eligibility determination; and provides follow-up contacts as necessary to ensure that services fulfill need.
Intellectual Disability	A disability characterized by significant limitations both in intellectual functioning and in adaptive behavior, which covers many everyday social and practical skills. In order to receive services through DDSD, a person must have an intellectual disability with onset prior to age 18.
Intelligence Quotient (IQ)	A number used to express a person's relative intelligence as determined by a standardized test.

Intensive Personal Supports	Support services which are provided to eligible individuals who need a more enhanced level of direct support in order to successfully reside in a community-based setting. Intensive Personal Supports build upon the level of support provided by a Habilitation Training Specialist (HTS) or Daily Living Supports staff by utilizing a second staff person on duty to provide assistance and training in self-care, daily living, recreational and habilitation activities. (Offered through the DDSD Community Waiver)
Intermediate Care Facility for persons with Mental Retardation (ICF MR)	See Institution (page 48).
Job Coach	An individual who holds an OKDHS-approved job coach certification and provides ongoing support services to eligible individuals in supported employment placements. Services directly support the service recipient's work activity, including marketing and job development, job and work site assessment, training and worker assessment, job-matching procedures, development of co-worker natural and paid supports, and teaching job skills.
Legal Guardian	A person who has the legal responsibility for providing care and management for a person who is incapable of administering his or her own affairs, either due to age (very young or even very old) or to some other physical, mental or emotional impairment.
Medicaid (SoonerCare)	A joint federal and state program that helps with medical costs for some people with low income and limited resources. Oklahoma's Medicaid program, or SoonerCare, provides health care to children under the age of 19, adults with children under the age of 18, pregnant women, people over the age of 65 and people with blindness or other disabilities.
Medically Necessary	Services or supplies that: (1) are proper and needed for the diagnosis or treatment of a medical condition; (2) are provided for the diagnosis, direct care and treatment of the medical condition; and (3) meet the standards of good medical practice in the local area.
Medicare	The federal health insurance program for: people 65 years of age or older, certain younger people with disabilities and people with End-Stage Renal Disease (permanent kidney failure with dialysis or a transplant, sometimes called ESRD).
Mental Retardation (MR)	MR has to be diagnosed by age 18 and is characterized by significantly sub-average intellectual functioning and limitations in two or more adaptive skill areas of communication; self-care; social skills; use of community resources; self-direction; health and safety; learning; leisure; and work. Intellectual disability is the nationally recognized term (see page 48).

Nutritional Services	<p>Intended to maximize an individual’s nutritional health. Services may include evaluation and consultation on diet.</p>
Occupational Therapy	<p>Assessment, consultation, planning, therapy and monitoring activities conducted by an occupational therapist licensed by the Oklahoma Board of Medical Licensure and Supervision. Services are intended to increase functional independence by enhancing the development of adaptive skills and performance capacities of persons with physical disabilities and related psychological and cognitive impairments. Treatment involves the therapeutic use of self-care, work and play activities, and may include modification of the tasks or environment to enable the individual to achieve maximum independence, prevent further disability and maintain health.</p>
Oklahoma Areawide Services Information System (OASIS)	<p>OASIS provides a statewide information and referral services that helps Oklahomans find community resources. Anyone needing help can call the toll-free number (1-800-426-2747) or search the directory at http://oasis.ouhsc.edu. OASIS has a database of thousands of agencies, organizations and programs throughout the state, and can help people find the services they need in their area. OASIS also has listings of national organizations and agencies, as well as local support groups and parent-to-parent support resources.</p>
Oklahoma Department of Human Services (OKDHS)	<p>A state government agency whose mission is to help individuals and families in need help themselves lead safer, healthier, more independent and productive lives. OKDHS provides oversight for a variety of social services in the state of Oklahoma, including Home and Community Based Waivers.</p>
Oklahoma Health Care Authority (OHCA)	<p>The Oklahoma Medicaid agency. OHCA authorizes reimbursement for Medicaid State Plan services.</p>
Oklahoma Respite Resource Network (ORRN)	<p>A statewide collaboration of partners who have designed and implemented a respite voucher program. Caregivers hire the person they choose to care for their loved one, set the rate of pay for the provider and train the provider.</p>

Personal Care Services	Assistance to an individual in carrying out activities of daily living, such as bathing and grooming, or in carrying out instrumental activities of daily living, such as preparing meals and doing laundry or errands directly related to the individual's personal care needs, to assure personal health and safety of the individual or to prevent or minimize physical health regression or deterioration. Personal Care Services requires a skilled nursing assessment of need, development of a care plan to meet identified personal care needs, care plan oversight and periodic re-assessment and updating, if necessary, of the care plan. Personal Care services do not include technical services, such as tracheal suctioning, bladder catheterization, colostomy irrigation or operation of equipment of a technical nature. Personal Care Services support informal care being provided in the person's home.
Physical Therapy	Assessment, consultation, planning, treatment and monitoring activities conducted by a physical therapist licensed by the Oklahoma Board of Medical Licensure and Supervision. Treatment involves use of physical therapeutic means such as massage, manipulation, therapeutic exercise, cold or heat therapy, hydrotherapy, electrical stimulation and light therapy.
Plan of Care	A summary listing of services that indicates the amount, duration and cost of each service recommended for funding through the Developmental Disabilities Services Division (DDSD) Home and Community Based Waivers. The plan of care is based upon identified needs in the Individual Plan.
Provider	A doctor, hospital, health care professional or health care facility. A provider also may be a non-professional who provides care (e.g., respite care).
Psychological Services	OKDHS Developmental Disabilities Services Division (DDSD) contracts with more than 80 psychologists (having non-restrictive licensure by Oklahoma Psychologist Board of Examiners) and certified behavior analysts who provide direct psychological and/or behavioral supports for individuals receiving Home and Community Based Waiver services.
Quality Assurance	The process of looking at how well a medical service is provided. The process may include formally reviewing health care given to a person or to a group of people, locating a problem, correcting a problem, and then checking to see if changes made were effective.
Respite Care	Temporary relief for caregivers and families who are caring for those with disabilities, chronic or terminal illnesses, or the elderly.
Respite Voucher	Financial assistance in the form of a credit ranging from \$300-\$400 based on income, which helps caregivers hire someone to give them a break.

<p>Self-Directed Financial Management Services (FMS)</p>	<p>Self-Directed Financial Management Services (FMS) is a required part of the In-Home Supports Waiver for Children and Adults if the Self-Directed Services (SDS) option is chosen. The FMS subagent is an entity designated as an agent by OKDHS/ DDS to act on behalf of the person receiving services who has an employer and budget authority for the purpose of managing payroll tasks for the person's employee(s) and for making payment for SD-GS as authorized in the person's plan. FMS subagent duties include, but are not limited to: a) provision of financial management support to the person by tracking individual expenditures and monitoring SDS budgets; b) processing the person's employee payroll, withholding, filing and paying applicable federal, state and local employment-related taxes and insurance; c) collecting and processing employees' time sheets and making payment to the person's employees; d) providing each person who is receiving services with information that will assist with managing the self-directed budget; e) maintaining separate accounts for each person's SDS budget; and f) tracking and reporting the person's funds, disbursements and the balance of the person's funds.</p>
<p>Self-Directed Goods and Services (SD-GS)</p>	<p>SD-GS are a part of the In-Home Supports Waiver for Children and Adults when the Self-Directed Services (SDS) option is chosen. SD-GS are incidental, non-routine goods and services that promote skills related to self-care, daily living, adaptive functioning, general household activities, meal preparation and leisure that are needed for the person receiving services to reside successfully in the community. SD-GS do not duplicate other services authorized in the person's plan of care. These goods and services must be included in the Individual Plan and approved in the SDS budget.</p> <p>SD-GS must be justified by a recommendation from a licensed professional, and meet one or more of the following additional criteria: (i) the item or service would increase the person's functioning related to the disability; (ii) the item or service would increase the person's safety in the home environment; or (iii) the item or service would decrease dependence on other SoonerCare (Medicaid)-funded services. SD-GS may include, but are not limited to: fitness items that can be purchased at most retail stores; personal emergency monitoring systems; food catchers; specialized swing sets; toothettes or electric toothbrushes; seat lifts; weight loss programs; or gym memberships when there is an identified need for weight loss or increased physical activity.</p>
<p>Self-Directed Habilitation Specialist (SD-HTS)</p>	<p>The Self-Directed Habilitation Training Specialist (SD-HTS) supports the person receiving services in self-care, daily living and leisure skills needed to reside successfully in the community. Services are provided in community-based settings in a manner that contributes to the person's independence, self-sufficiency, community inclusion and well-being. SD-HTS may be accessed through the In-Home Supports Waiver for Children and Adults when the SDS option is chosen.</p>
<p>Self-Directed Personal Care Assistant</p>	<p>A Self-Directed Personal Care Assistant (PCA) is an individual employed by the person receiving services (or a representative) to provide Personal Care Services and contracted with the OHCA to provide those services (bathing, grooming or carrying out instrumental activities of daily living, such as preparing meals and doing laundry or errands). OKDHS must determine a PCA to be qualified to provide Personal Care Services before they can provide services. A Self-Directed Personal Care Assistant is available through the ADvantage Waiver only.</p>

Self-Directed Services (SDS) Option	<p>The Self-Directed Services (SDS) option provides the opportunity for a person receiving services to exercise choice and control in identifying, accessing and managing specific waiver services and supports in accordance with their needs and personal preferences. Self-Directed Services (SDS) are waiver services that the Oklahoma Department of Human Services (OKDHS) Developmental Disabilities Services Division (DDSD) specifies may be directed by the person receiving services or a representative using both employer and budget authority.</p>
Skilled Nursing	<p>Services of a maintenance or preventive nature provided to people with stable, chronic conditions. These services are not intended to be treatment for an acute health condition and may not include services which would be reimbursable under either Medicaid's or Medicare's Home Health Program. This service primarily provides nurse supervision to the Personal Care Assistant or to the Advanced Supportive/Restorative Assistance Aide, assessment of the member's health and assessment of services to meet the individual's needs as specified in the plan of care. A skilled nursing assessment/evaluation on-site visit is made to each person for whom Advanced Supportive/Restorative Assistance services are authorized to evaluate the condition of the person.</p>
SoonerCare (Medicaid)	<p>Oklahoma's Medicaid program. See Medicaid (page 49).</p>
Specialized Foster Care (SFC)	<p>Provides up to 24 hours per day of in-home residential habilitation services funded through the DDSD Community Waiver. SFC provides an individualized living arrangement in a family setting including up to 24 hours per day of supervision, supportive assistance and training in daily living skills for individuals age three and older.</p>
Specialized Medical Equipment and Supplies	<p>Devices, controls or appliances (specified in the plan of care for an individual) that increase his or her abilities to perform activities of daily living or communicate with the environment in which they live. Also included are items necessary for life support and equipment supplies essential to the proper functioning of such items, as well as durable and non-durable medical equipment not available under the Medicaid State Plan.</p>
Speech/Language Pathology	<p>Assessment, planning, therapy, consultation and monitoring activities provided by a licensed speech and language pathologist.</p>
Social Security Disability Insurance (SSDI)	<p>Benefits to you and certain family members if you are "insured," meaning you worked long enough and paid Social Security taxes. You must have a medical condition that meets Social Security's definition of disability. In general, SSDI is a monthly cash benefit paid for those unable to work for a year or more because of a disability. Benefits usually continue until you are able to return to work again on a regular basis. There are also a number of special rules, called "work incentives," that provide continued benefits and health care coverage to help you make the transition back to work.</p>
Supplemental Security Income (SSI)	<p>A federal income subsidy program administered by the Social Security Administration designed to help people who are aged or have blindness or another disability with little or no income. It provides cash to meet basic needs for food, clothing and shelter.</p>

Supplemental Security Income-Disabled Children's Program (SSI-DCP)	Provides services and equipment to children under the age of 18 who meet the Social Security Administration's definition of disability and are receiving at least \$1 of Supplemental Security Income (SSI). The child with a disability must live at home or be away at school, returning home occasionally and under parental control. SSI-DCP provides therapeutic equipment and appliances, speech and hearing services, developmental aides, child care services and diapers (for children ages 3-18). These services are available only after Medicaid has denied authorization or the services are not covered under Medicaid.
Systems of Care	Provides wraparound services to children and adolescents with mental health needs and their families. It includes both mental health services and other support services that are provided through an individualized plan. The plan is developed through a collaboration between the child, the family and professionals, and the services focus on both the needs of the child and the needs of the family.
Tax Equity and Fiscal Responsibility Act of 1982 (TEFRA)	Provides Medicaid coverage to certain children with disabilities living in the home if they would qualify for Medicaid as residents of nursing facilities, ICF/MRs or inpatient acute care hospital stays expected to last 60 days or more. In addition to disability, the OHCA Level of Care Evaluation Unit determines the appropriate level of care and cost effectiveness.
Transportation Services	Specialized public transportation services to the elderly and people with disabilities. Under waiver services, provider agencies can be reimbursed for mileage and transporting. SoonerRide is the transportation service provided through SoonerCare (Medicaid).
Uniform Comprehensive Assessment Tool (UCAT) III	An assessment tool that evaluates a person's level of care based a number of factors, including the ability to complete self-care activities (eating, grooming, bathing, etc.); the ability to take care of a home (shopping, cleaning, etc.); the safety of the person's physical environment; the person's social support system; and the person's health.
Waiver	Under Section 1915(c) of the Social Security Act, a waiver allows payment for services provided to eligible individuals that are not covered through Oklahoma's Medicaid program.
Waiver Services	Waiver services, when utilized with services normally covered by Medicaid, provide for health and developmental needs of individuals who otherwise would not be able to live in a home or community setting. Any waiver service should be appropriate to the person's needs and must be written in their Individual Plan.

Want to Order?

If you would like additional copies of this manual, please call us at 405-271-4500 or visit the “Products” section of our website at <http://www.ouhsc.edu/thecenter/>.

About the Center for Learning and Leadership

405-271-4500 • 1-800-627-6827 • <http://www.ouhsc.edu/thecenter/> • Learn2Lead-UCEDD@ouhsc.edu



A University Center for Excellence
in Developmental Disabilities
University of Oklahoma Health Sciences Center

The Center for Learning and Leadership is Oklahoma’s University Center for Excellence in Developmental Disabilities (UCEDD). The Oklahoma UCEDD is a member in good standing of the Association of University Centers for Disabilities (AUCD). There are over 60 University Centers for Excellence in Developmental Disabilities in the United States and the U.S. Territories, which are all funded by the U.S. Administration on Developmental Disabilities.

The Center for Learning and Leadership (CLL) is located on the campus of the University of Oklahoma Health Sciences Center in Oklahoma City. The CLL works in partnership with Oklahomans with disabilities and their families and with representatives from universities, state agencies, community organizations and advocacy networks.

We are committed to bringing the perspectives of people with disabilities and their family members into the planning, implementation and evaluation of interdisciplinary education programs, community services, research and dissemination activities. To accomplish this commitment, our faculty and staff:

- involve self-advocates and family members as partners in learning and leadership opportunities
- develop interdisciplinary education and training opportunities
- disseminate information about best practices through courses and community involvement
- provide technical assistance to promote community inclusion of people with developmental disabilities and their families
- and address research issues that impact the lives of people with disabilities and their families.



**Center for Learning
and Leadership**

A University Center for Excellence
in Developmental Disabilities
University of Oklahoma Health Sciences Center

 *The* UNIVERSITY *of* OKLAHOMA
Health Sciences Center