

Navigation System for GM MyLink with 7" LCD Screen

250-7610 GM Soft Touch Navigation System



Parts Identification	Page 1
Assembly Layout	Page 2
Dashboard Disassembly	Page 3
Interface Module Details	Page 4
Interface Module Connections	Page 5
Reassembly	Page 6



CAUTION: It is strongly recommended to disconnect the negative battery cable for 3 minutes before beginning installation of this product to avoid unintended air bag deployment. Note and record any anti-theft radio codes prior to disconnecting.

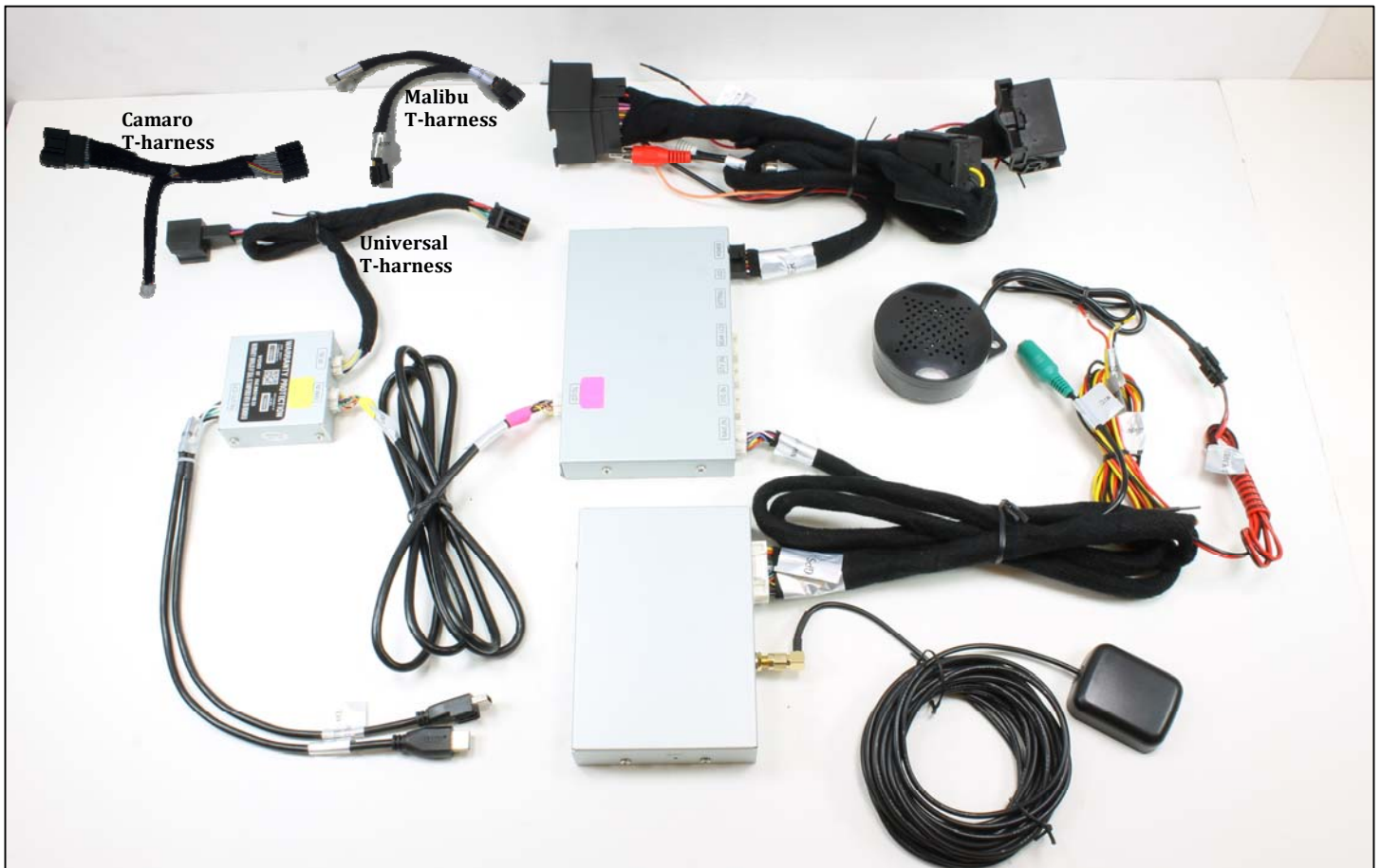
WARNING

To avoid dangerous distractions that may lead to an accident, the driver should never operate the system while the vehicle is in motion. Before installing this product, the seller should inform the end-user of proper use and compliance with the proper instructions and all state and federal laws.

Parts Identification

Item	Qty.	Description
1	1	Navigation control module power and data harnesses
2	1	Video-switching control module
3	1	GPS antenna
4	1	GPS/Multimedia video interface modules
5	1	Data integration unit
6	1	External speaker
7	1	Vehicle interface T-harness
8*	1	Camaro harness (not pictured, sold separately)
9*	1	Malibu harness (not pictured, sold separately)

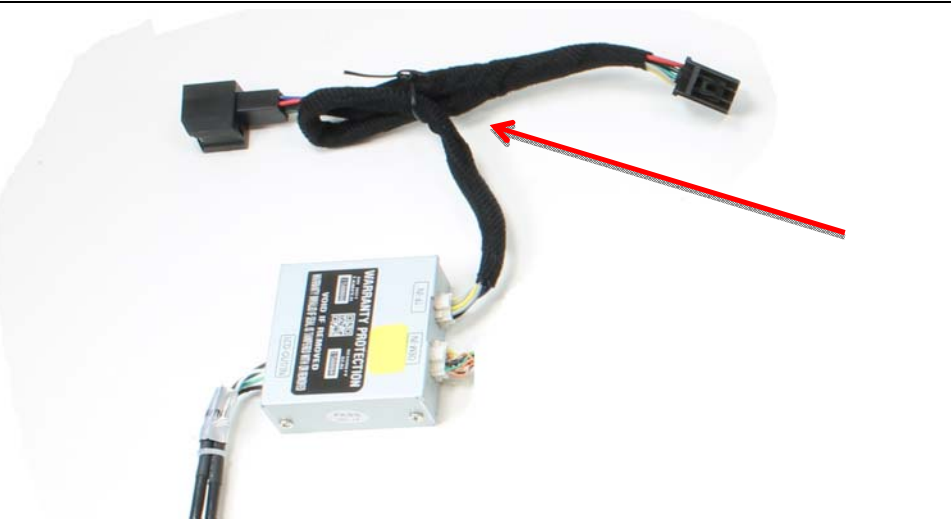




Before you Start

The following assembly is used in:

- 2011-2013 GMC Terrain
- 2011-2013 Chevrolet Equinox
- May 2012+ Chevrolet Volt (equipped with 7" LCD screen and MyLink)
- 2012-2013 Buick LaCrosse, Regal, and Verano



Universal kit includes assembly shown to the left. T-Harness is applicable to Chevrolet Equinox, Chevrolet Volt (May 2012 and later), GMC Terrain, Buick LaCrosse, Buick Regal, and Buick Verano **ONLY**.

For the Chevrolet Malibu and Camaro application, use their vehicle specific harnesses (sold separately). The vehicle specific harness will replace the universal harness provided in the assembly pictured above.

- 2013+ Chevrolet Camaro: Part# 250-7611
- 2013+ Chevrolet Malibu: Part# 250-7612

Dashboard Disassembly

Step 1	Step 2	Step 3	Step 4
			
Remove screen visor	Remove trim panels	Remove screws surrounding storage area	
Step 5		Step 6	
			
Remove retaining screws from display		Remove radio from dashboard	
Step 7		Step 8	
			
<p>Disconnect the factory wiring harnesses from the rear of the radio and install the included interface T-harnesses between the radio and the factory wiring harnesses making sure all connections are properly seated and secure before proceeding.</p>		<p>Connect ACC and GND from radio T-harness to cigarette lighter ACC and GND pictured above. Connect ACC and B+ of GPS harness to cigarette lighter ACC pictured above. Connect GND of GPS harness to cigarette lighter GND pictured above.</p>	

T-harness Installation (Chevrolet Camaro and Malibu)

Chevrolet Camaro T-harness Installation

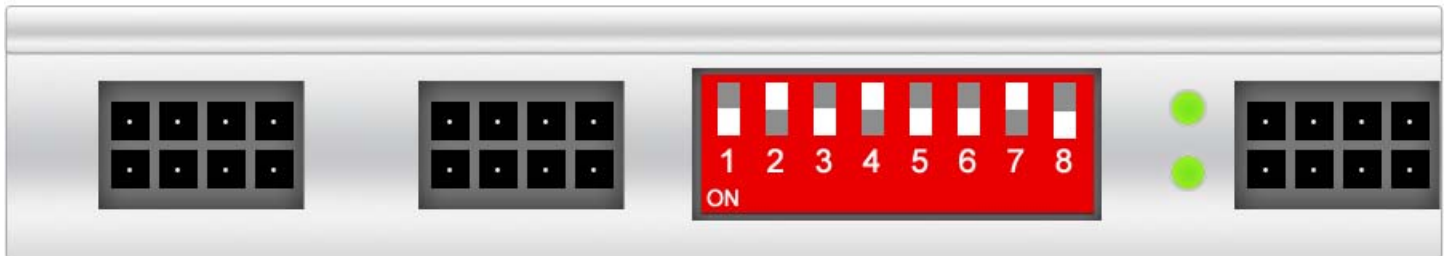


Chevrolet Malibu T-harness Installation



NOTE: The GVIF harness for both of the vehicles listed above is to be connected to the back of the vehicle's LCD screen and **NOT** directly to the radio.

Programming Switch Settings for Reverse Camera Integration



Default Programming Switch Settings

1 – On 2 – Off 3 – On 4 – Off 5 – On 6 – On 7 – Off 8 – On

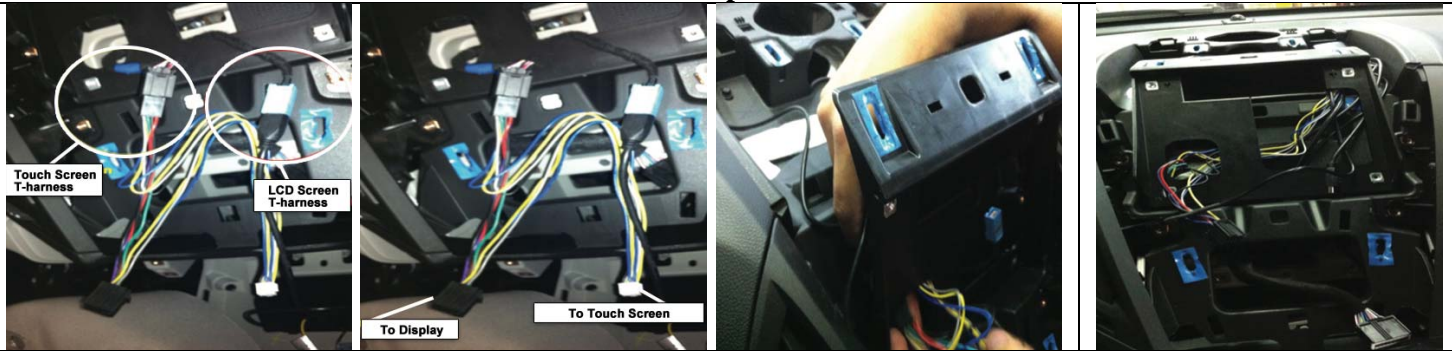
Factory or Aftermarket Camera Settings

Aftermarket Camera – Place switch #1 in **OFF** position.

Factory Camera – Place switch #1 in **ON** position.

Interface Module Connections

Step 9



Route included T-harnesses behind display housing

Step 10



Connect the **OEM-IN** and **LCD-OUT/IN** harness plugs to the video-switching module. Connect the **GVIF** plug to the back of the factory touch screen.

Step 11



Place the **GPS/Multimedia** video interface module in the cavity behind the glove box connecting the **GPS** harness plug leaving room for future access to the **SD Card**.

Step 12



Remove the passenger-side panel from the center console and place the data integration unit securely in front of the air conditioning system's ductwork connecting the **NAV_IN** and **POWER** harness plugs.

Step 13



Using the adhered double-sided tape, attach the system's speaker to the inside of the center console facing the rear of the vehicle. Route the speaker's harness to be connected with the **SPEAKER** harness from the **GPS** harness

Step 14



Route the GPS antenna extension harness from the GPS/Multimedia video interface module to the rear of the vehicle.

Step 15



Place the GPS antenna at the top-rear of the vehicle allowing it to attach to the vehicle's body using its built-in magnet.

Reassembly

1. Reinstall all trim pieces taking special care to ensure harnesses and wiring connections are properly secured.
2. Make sure no harnesses are bent or pinched by trim pieces.
3. Reconnect all disconnected bulbs and check for function.

Installation Tips

- Confirm proper cable extension connector orientation and always verify proper ends are routed in correct direction.
- It is a good idea to dry-fit all pieces in this kit before permanently attaching them to ensure proper orientation and operation before beginning installation for familiarization with components.
- Always treat any metal exposed during installation with a rust preventative compound to prevent system failure due to rust and/or corrosion.
- Always seal any holes drilled with the provided sealing putty to prevent water infiltration through unprotected areas.
- Confirm integrity of mechanical and electrical connections before moving to next installation sequence.

Step 16



Once all connections have been made, re-assemble the radio and dashboard.

Step 17



If indoors, start the vehicle and move it outside so that the GPS antenna has a clear view of the sky. Press the mute/call decline button to switch from the factory interface to the iGo Navigation interface.

Installation Notes
