

Thermo Scientific Ramsey™ IMS PC-Based Inventory Management Software

The Thermo Scientific Ramsey Inventory Management Software (IMS) system monitors material level in conjunction with the Thermo Scientific Ramsey Bob II inventory management system and provides a graphical representation of up to 130 vessels, along with detailed information on every single vessel. This feedback leaves you in control of your process, permitting you to optimize efficiency, reduce downtime and improve your overall results.



Software Command Options

Left click on a vessel to display:

- Vessel number
- Product type
- Last measured date and time
- Height of product
- Distance to product
- Percent full
- Content weight
- Remaining weight
- Content volume
- Remaining volume

Right click on a vessel to:

- Measure the vessel
- Remove the bin
- Retrieve level history
- View bob diagnostics
- Set configuration, display, bobs and alarms



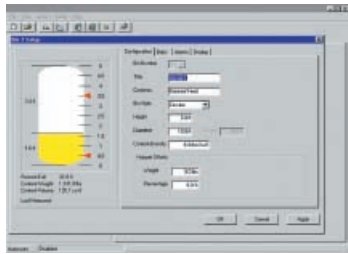
The Thermo Scientific Ramsey IMS is a Windows® compatible inventory management system. It interfaces with the advanced microprocessor-based Ramsey Bob II inventory measurement system's remote sensors to monitor material level in up to 130 vessels at one time. The Ramsey Bob II system completely ignores dust, echoes, vapors, temperature, steam and material densities. It is capable of measuring all liquid, slurry, powder and dry bulk solids applications.

The Ramsey IMS provides a graphical representation of ten vessels per tab, up to 130 vessels overall, as well as detailed information on any single selected vessel.

All measurements are saved in a comma-delimited file with a time and date stamp. Measurements can be taken in feet, yards or meters. Weight can be calculated in pounds, kilograms, tons, metric tons or slugs. Bin inventories and level histories are displayed in graphical form and can be printed at any time.

This powerful software system can be programmed to take automatic measurements at preset intervals and, in the event of an alarm, it will allow you to send vital information to a pager, e-mail address or fax machine. You may also access the Ramsey IMS from remote locations. The program is compatible with the following versions of the Windows operating system: 95, 98, 2000, XP and NT.

Thermo Scientific Ramsey IMS

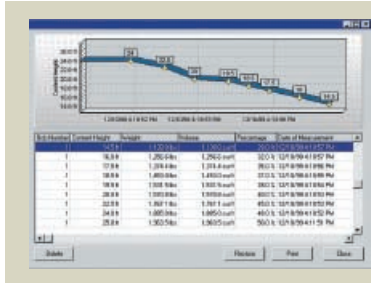


Bin Setup

The Bin Setup screen indicates where individual bin settings are recorded. Hopper Offset allows the weight and percentage of material in the hopper bottom to be added into the total calculation.

Bin Settings

- Bin number
- Title
- Content density
- Content
- Diameter or length
- Bin dimensions
- Hopper offset (weight and percentage)
- Bin style (circular or rectangular)



Level History

The Level History screen displays inventory history for every vessel on the system in both a numerical and graphical format. This information can be printed.

History Includes

- Bin number
- Bob number
- Date/time of measurement
- Volume
- Weight
- Percent full
- Content height

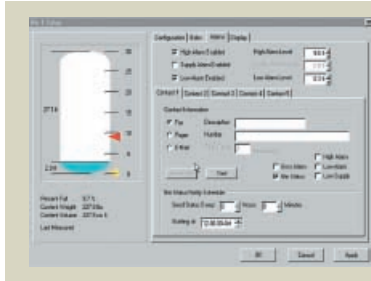


Bin Inventory

The Bin Inventory screen displays current inventory for each individual vessel on the system in both a numerical and graphical format. This information can be printed.

Bin Inventory Includes

- Bin number
- Bin name
- Contents
- Level
- Weight
- Volume
- Percent full
- Date/time measured



Bin Alarm / Bin Status

The Bin Alarm screen provides programmable high, low, supply, and error alarms that can be programmed to access the computer's modem and dial up to five preset emergency numbers. Detailed bin inventory for all vessels on the system can be faxed or e-mailed at preprogrammed intervals to five contacts.

Alarm Settings Include

- High alarm enabled/high alarm level
- Low alarm enabled/low alarm level
- Alarm notification number
- Page delay
- Alarm notification fax, e-mail and/or pager
- Enabled high/low/error alarms
- Alarm notification description
- Bin status notification schedule

System Requirements

- IBM®-compatible PC; 80486 DX2 66 MHz or higher
- Monitor at 800 x 600 minimum resolution
- SVGA graphics card
- Windows 95, 98, NT version 4.0 (service pack 4 or higher), 2000 or XP
- 16 MB RAM on Windows 95 and 98
- 32 MB RAM on Windows NT, 2000 and XP
- One serial communications port
- RS-485 interface module (supplied by Thermo Fisher)
- RS-232 serial cable (supplied by user)

© 2007 Thermo Fisher Scientific Inc. All rights reserved. Windows is a registered trademark of Microsoft Corporation in the United States and/or other countries. IBM is a registered trademark of International Business Machines Corporation in the United States, other countries, or both. All other trademarks are the property of Thermo Fisher Scientific Inc. and its subsidiaries. Results may vary under different operating conditions. Specifications, terms and pricing are subject to change. Not all products are available in all countries. Please consult your local sales representatives for details. Literature Code PL8025.1207

Australia
+61 (0) 8 8208 8200
+61 (0) 8 8208 8300 fax
Canada
+1 (905) 888-8808
+1 (905) 888-8828 fax
Chile
+56 (0) 2-335-3388
+56 (0) 2-335-1590 fax
China
+86 (0) 21 6865 4588
+86 (0) 21 6445 7830 fax

Germany
+49 (0) 208-824930
+49 (0) 208-852310 fax
India
+91 (20) 6626 7000
+91 (20) 6626 7001 fax
Italy
+39 02-959514-1
+39 02-953200-15 fax
Netherlands
+31 (0) 76-579-5555
+31 (0) 76-571-4958 fax

Poland
+48 (0) 22 651 7530
+48 (0) 22 651 7535 fax
South Africa
+27 (0) 11-609-3101
+27 (0) 11-609-3110 fax
Spain
+34 (0) 91-484-5965
+34 (0) 91-484-3597 fax
United Kingdom
+44 (0) 1788-820300
+44 (0) 1788-820301 fax

United States
+1 (800) 227-8891
+1 (763) 783-2525 fax
+1 (763) 783-2500 direct

www.thermo.com/bulk-handling