

# PASSIONATE PEOPLE CREATE EXCEPTIONAL THINGS

Welcome to Atlas Copco China!

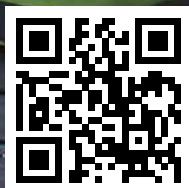
Atlas Copco



Atlas Copco Official WeChat



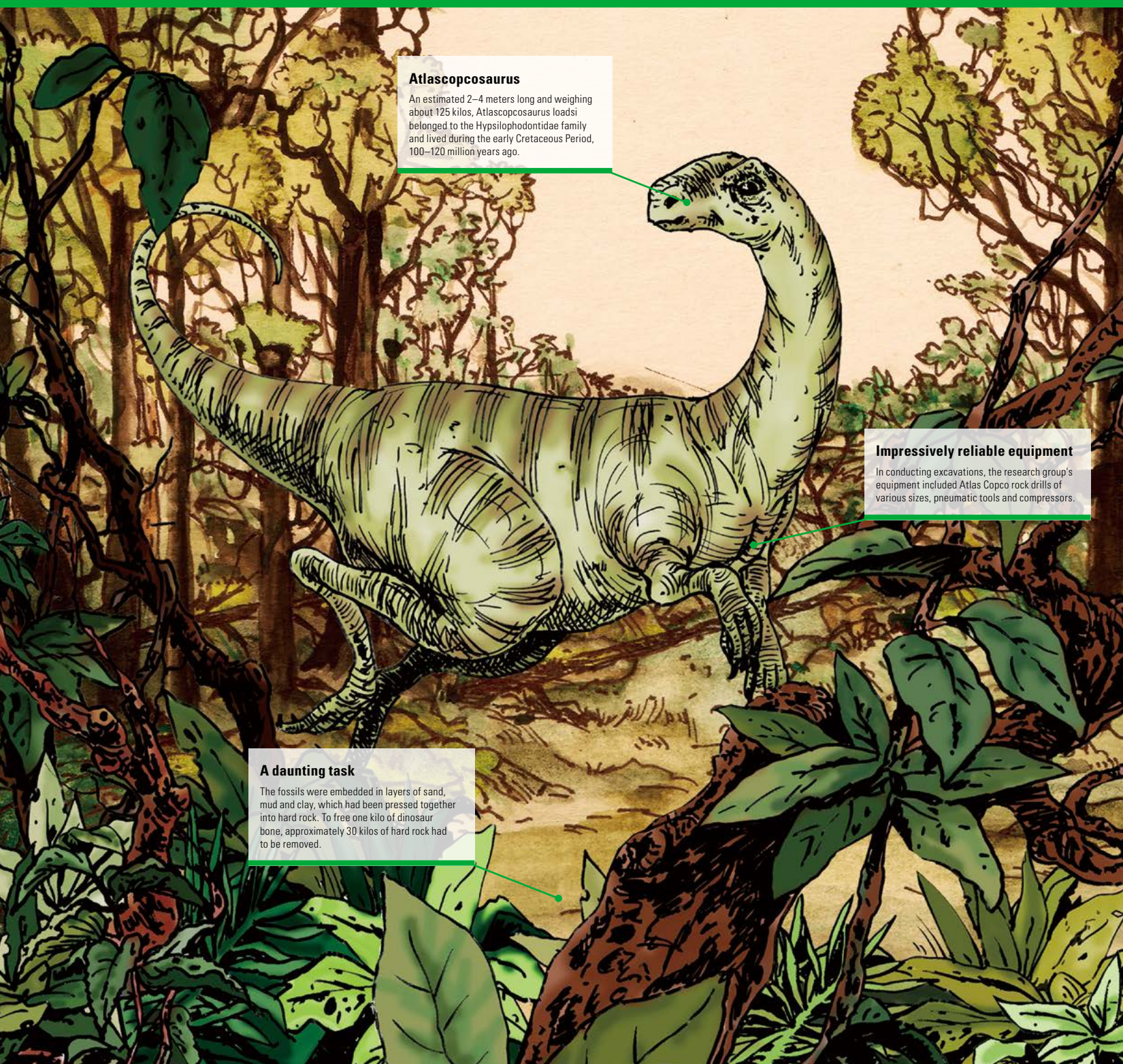
Atlas Copco Sina Weibo





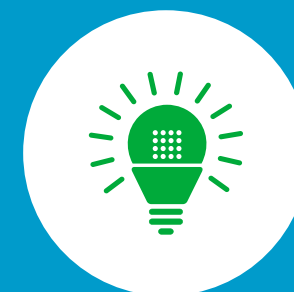
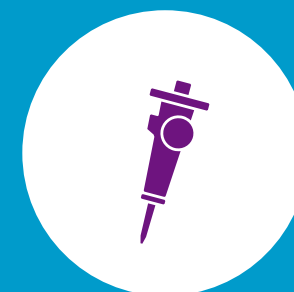
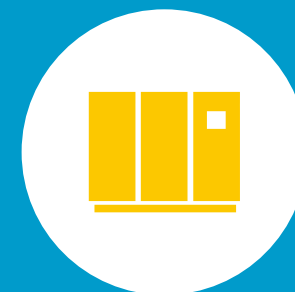
## NOT EVERY COMPANY HAS A DINOSAUR SPECIES OFFICIALLY NAMED AFTER IT!

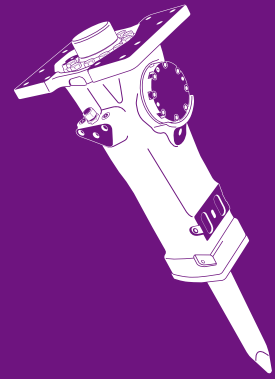
Atlas Copco was awarded that privilege 30 years ago when a newly discovered plant-eating species of dinosaur was given the generic name *Atlascopcosaurus*. The naming honored the company for supporting archaeological research carried out for some years by paleontologist Dr. Thomas H. Rich at Dinosaur Cove, Victoria, Australia.



## A WORLD LEADING PROVIDER OF INDUSTRIAL PRODUCTIVITY SOLUTIONS

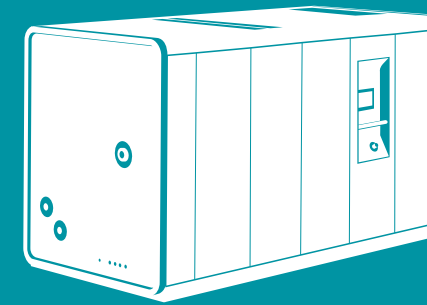
Atlas Copco is a world-leading provider of sustainable productivity solutions. The Group serves customers with innovative compressors, vacuum solutions and air treatment systems, construction and mining equipment, power tools and assembly systems. Atlas Copco develops products and services focused on productivity, energy efficiency, safety and ergonomics. The company was founded in 1873, is based in Stockholm, Sweden, and has a global reach spanning more than 180 countries. In 2014, Atlas Copco had revenues of BSEK 94 (BEUR 10.3) and more than 44 000 employees. The Atlas Copco share is listed at the exchange NASDAQ OMX Stockholm, Large cap.





## **BUILDING WITH SUSTAINABLE PRODUCTIVITY**

Innovative and reliable construction equipment builds infrastructure faster and with more sustainable **productivity** to maximize up-time and minimize total cost of ownership in construction.



## **ENERGY EFFICIENCY IN YOUR INDUSTRY**

For each application, there is a perfect compressed air solution. **Energy efficiency**, productivity and lifecycle cost will help you make the right choice.



**The Construction Technique business area** provides construction and demolition tools, portable compressors, pumps and generators, lighting towers, and compaction and paving equipment. The business area offers specialty rental and provides service through a global network. Construction Technique innovates for sustainable productivity in infrastructure, civil works, oil and gas, energy, drilling and road construction projects. Principal product development and manufacturing units are located in Belgium, Germany, Sweden, the United States, China, India and Brazil.

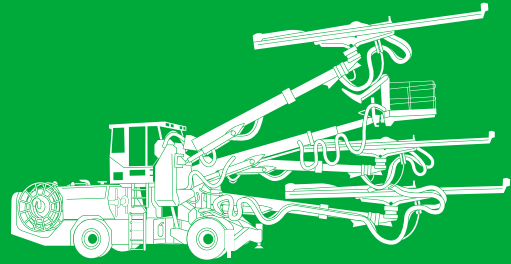
**The brands sold in Greater China:**  
Atlas Copco, Chicago Pneumatic, Lifton, Liutech, Shenyang



**The Compressor Technique business area** provides industrial compressors, vacuum solutions, gas and process compressors and expanders, air and gas treatment equipment and air management systems. The business area has a global service network and innovates for sustainable productivity in the manufacturing, oil and gas, and process industries. Principal product development and manufacturing units are located in Belgium, Germany, the United States, China and India.

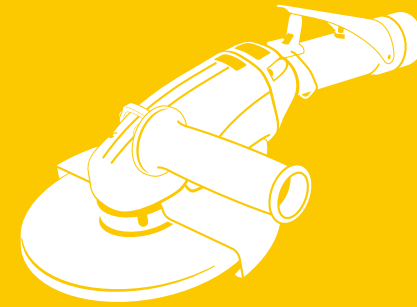
**The brands sold in Greater China:**  
Atlas Copco, Chicago Pneumatic, Bolaite, Edwards, Linghein, Liutech, Pneumatech, Quincy, Shengda Air

## INNOVATIVE THINKING IN MINING



Automation and connectivity bring **safety** and efficiency in mining with a minimal impact on the environment. Let us show you what can be done.

## ERGONOMIC TOOL DESIGN



Our assembly products offer **ergonomics**, speed and accuracy to minimize operator fatigue and increase customer productivity.



**The Mining and Rock Excavation Technique business area** provides equipment for drilling and rock excavation, a complete range of related consumables and service through a global network. The business area innovates for sustainable productivity in surface and underground mining, infrastructure, civil works, well drilling and geotechnical applications. Principal product development and manufacturing units are located in Sweden, the United States, Canada, China and India.

**The brands sold in Greater China:**  
Atlas Copco, Sanshan, Shenyang



**The Industrial Technique business area** provides industrial power tools and systems, industrial assembly solutions, quality assurance products, software and service through a global network. The business area innovates for sustainable productivity for customers in the automotive and general industries, maintenance and vehicle service. Principal product development and manufacturing units are located in Sweden, Germany, the United States, United Kingdom, France and Japan.

**The brands sold in Greater China:**  
Atlas Copco, Chicago Pneumatic, Desoutter, Fuji, Rd Rodcraft, SCA, Seti-tec, Titan



# INNOVATE FOR SUSTAINABLE PRODUCTIVITY

Innovation is a key gene in Atlas Copco since its establishment in 1873. We firmly believe that there is always a better way of doing things. We are committed to sustainable productivity and strive to deliver innovative, high-quality products and professional services. A new product should always add value and increase the competitiveness for our customer.

Atlas Copco strives to be a responsible corporate citizen in every market where we operate by finding synergies between economic growth, environmental stewardship and socially responsible operations. Sustainability lies at the heart of our innovative products and is driven by employee pride in our Group values.

Atlas Copco has a vision to become and remain First in Mind—First in Choice® for all of its stakeholders.

The Group has been awarded as one of the most innovative and sustainable companies by products and solutions developed to increase for example customer's energy efficiency.

Innovation is one of Atlas Copco's core values. Our innovative spirit is a strong evidence of our success. We continuously launch new and better products for improved productivity, safety, energy efficiency and with ergonomics.

Customers are key to our innovation process. Our development projects are always built for the customer; products and services are developed and tested by the most demanding customers in industry. We strive to deliver products and services that go above and beyond the most demanding industrial standards, and deliver the best results for our customers - anywhere, anytime.



Compared to a traditional load/unload compressor of the same type, the innovation of the new **GA VSD+** can cut energy consumption by an average of 50% while delivering a better performance (the new range is 15% more efficient while offering a 12% improvement in free air delivery over the range). This is an important step to live up to "Sustainable Productivity" as promised by Atlas Copco.



Small portable air compressor **XAS** range's HardHat™ canopy has been designed to eliminate corrosion problems generally associated with metal canopies. It is also high impact, crack resistant and retains a high residual resale value to eliminate the time and cost of repair and repaint jobs, and minimizes impact on the environment.



The new products of **MicroTorque** tightening systems won three prestigious Red Dot design awards for high-precision screwdriver systems. The products improve ergonomics and enhance productivity for manufacturing customers especially in the electronics industry, and give the operators the ultimate in comfort and safety.



Used for drilling new high speed railway links across the world and equipped with our remarkable hydraulic rock drills, face drilling rig **Boomer** range represents a major leap forward in productivity and economy. And thanks to the state-of-the-art computer controlled drilling system, all four of the rig's booms can be supervised by a single operator. This marks a new milestone in low cost drilling.



# ATLAS COPCO IN CHINA OVERVIEW

Atlas Copco (China) Investment Co., Ltd. is the wholly-owned holding company of Atlas Copco in China and also is the headquarters of all the subsidiary corporations of Atlas Copco in Greater China. The holding company has the following departments: Legal Counsel, Internal Control, Financial Solutions, Corporate Human Resources, Corporate Communications and Business Services. They provide operational support and assistance for all Chinese subsidiary companies and their business units to realize sustainable management excellence.

- 1920s Atlas Copco products were sold for the first time in Greater China through export from Europe.
- 1959 Atlas Copco Taiwan Ltd. was founded.
- 1972 Atlas Copco products were put into use for one huge project for underground oil storage in Hong Kong.
- 1981 Atlas Copco China/HK Ltd. was founded.
- 1983 Atlas Copco made strategic decision to create a sustainable presence in Greater China.
- 1985 Atlas Copco China set up the first representative office in Beijing.
- 1993 Atlas Copco (Nanjing) Construction & Mining Equipment Ltd. was founded.
- 1994 Atlas Copco (Wuxi) Compressor Co., Ltd. was founded.
- 1997 Atlas Copco Tools and Assembly Systems operation was established in Shanghai, China.
- 1998 Atlas Copco (China) Investment Co., Ltd was founded in Shanghai, our first wholly owned company in Greater China.
- 1999 Atlas Copco (Shanghai) Trading Co., Ltd. was formed, the legal entity for all business areas of Atlas Copco customer centers in China.
- 2002 Liuzhou Tech Machinery Co., Ltd was acquired as the first local brand company for Compressor Technique in Greater China.
- 2003 Atlas Copco (Shenyang) Construction and Mining Equipment Co., Ltd. was founded.
- 2005 Atlas Copco acquired Wuxi Pneumatech Air & Gas Purity Equipment Co., Ltd.
- 2006 Atlas Copco acquired Bolaite (Shanghai) Compressor Co., Ltd.
- 2008 Atlas Copco (Wuxi) Research and Development Center was founded.
- 2010 Atlas Copco was one of the official partners in the Sweden Pavilion during World Expo 2010 in Shanghai.
- 2011 Construction Technique China Customer Center started its operations in Greater China.
- 2011 The new R&D Center of Mining and Rock Excavation Technique Business Area in China was set up in Nanjing.
- 2013 The grand opening of Atlas Copco (Wuxi) Compressor Co., Ltd. Plant II.
- 2014 Atlas Copco Asia Pacific (Shanghai) Distribution Center was founded.

Chinese Headquarters: **Shanghai**

Founded time of the 1<sup>st</sup> company in China: **Year 1959**

**30** enterprises in China

**17** production facilities

**3** R&D centers

**Over 200** regional branch offices

The total number of staff: **6314** (updated by Year 2014)



# COLLABORATING FOR NEW INNOVATIONS

With records being broken one after another, China economic growth has become the focus of the whole world over the years. Now China has entered a new development stage. Atlas Copco will take the opportunity to use global resources to provide localized service and support, and offer superior experience to every Chinese customer continuously.



In 2012, Taiwan Kung Sing Engineering Corporation ordered 12 Boomer L2 D drilling rigs and 3 FlexiROC T15 drilling rigs at a time for the construction of Guanyin (B2 section) and Gufeng (B3 section) tunnels. As a part of Provincial Highway 9 Suhua Highway Mountain Section Improvement Project, the two tunnels have a total length of 13.4 km. With 7 and 8 respective tunnel faces, the construction costs reached NTD 7.2 billion and 9.208 billion respectively.



Atlas Copco safeguarded "AUTO CHINA 2014" exhibition in Beijing successfully by highly reliable power supply for the booths of Audi, VW, Bentley, Lamborghini and other renowned brands under Volkswagen Group in E5 hall. The predictable power from Atlas Copco freed our user from any worry and anxiety. The energy saving and environmental equipment is easy to handle and install, which completely represents that Atlas Copco solution can provide sustainable productivity for our customer.



A major Atlas Copco client in China is the biggest local beverage company, Hangzhou Wahaha Group, which produces more than 150 types of food and drink. Wahaha has been using Atlas Copco oil-free compressors since 1998. Now more than nine out of ten Wahaha compressors are from Atlas Copco, and about 600 of them are operating at Wahaha every day.



Beijing Benz Automotive Co., Ltd. (BBAC) ordered 206 sets of PF6000 controllers from Atlas Copco in three batches in 2012. It was the newly developed controller by Industrial Technique business area, and selected by BBAC for the assembly of C-Class, E-Class, GLK, GLA and other car models in MRA, NGCC, and MRA-II, their three new general assembly plants. With excellent ergonomic design and brand new torque control system, Atlas Copco helps customer improve assembly quality and reduce overall cost of tools. Up to now, BBAC uses the largest number of PF 6000 controllers, of all Daimler plants in the world.



China State Construction (Hong Kong) undertook the large-scale project of Development at Anderson Road in Kowloon East, which had been planned by the government of the Hong Kong SAR for more than ten years. In 2008, China State Construction selected Atlas Copco's SmartROC T35, a silent and intelligent type of drill rig, due to its superb environmental performance, accurate computer control system and excellent working efficiency. It can greatly reduce the noise disturbance to neighborhood, as the sound level during operation is only 55 db, which is significantly lower than the upper limit of 120 db set by the government. The debut of SmartROC T35 in Asian construction industry achieved satisfactory result.



Atlas Copco delivered life cycle solution to Bosch in 2011. The Energy Recovery (ER) system can save 1,600 tons of coal consumption annually, reduce 945 tons of carbon emission, and cut costs of steam consumption by RMB350,000 for the customer. As a result, the investment in equipment got paid back within two years. As the energy conservation and emission reduction measures ensure more stable running of the equipment, the solution earned customer trust, and helped Wuxi Bosch Automotive Diesel Systems obtain LEED certification for Green Buildings.



Atlas Copco signed a 5-year contract with Changan Ford Automobile in 2014, to provide full service for their Assembly Plant 2. Our service has been highly recognized as it helps promote the productivity of critical assembly stations and reduce overall cost in operation. This contract with Changan Ford has been the largest full service contract with a general assembly plant ever since the establishment of Atlas Copco Industrial Technique Service Division in China.



HB 10000 is the most powerful heavy-duty hydraulic breaker by Atlas Copco, as well as the largest heavy hydraulic breaker in the world. It was first put into use in the construction of Kwun Tong Line Extension by MTR Corporation Limited in 2013, which is unprecedented in Hong Kong. In order to connect Whampoa Station to Yau Ma Tei Station, HB 10000 has removed approximate 850,000 cu.m. of soil and rocks along the 3-km extension line.



***QUALITY IN MANUFACTURING  
SUPPORTING YOU  
ANYWHERE AND ANYTIME***

In order to meet the needs of local customers further and support business growth of the entire group in Asia, Atlas Copco invested to set up a number of factories and R&D centers in Greater China, to meet the needs for compressors and mining products in Chinese market by improving innovation capacity and facilitating continuous localization and development of new products.

With Atlas Copco's continuous business growth in China and increasing customer demands, we have also established a new regional distribution center, serving as the logistic hub for business areas of Compressor Technique, Construction Technique and Industrial Technique for Chinese domestic markets and Asia Pacific, to provide customers with more convenient and better services.





## **MEET EXCITING WORLD-CLASS CHALLENGES EVERY DAY**

**At Atlas Copco, we attract and recruit people driven by a passion for innovation, people who know how to make a difference to our customers. We realize it by providing supports to their innovative spirits, help them grow and develop. We do it to meet the needs of our customers and deliver top quality on a global basis in all aspects from products to service.**

We see our people as our most valuable resource, they make the difference. At Atlas Copco you are entrusted with responsibility from day one and we take your professional development seriously. We believe that development and personal responsibility go hand-in-hand, and Atlas Copco supports employees who wish to improve their job performance – and themselves. With an extensive internal job and project market you will get every possible opportunity to have an exciting work life.

Atlas Copco operates in a multicultural environment with daily contact with customers, colleagues and business partners around the world. We offer interesting and challenging jobs throughout the value chain, ranging from product specialists and marketers, to service engineers and business controllers. Our employees are given the opportunity to work in many different countries and projects.

Are you ready for a world-class challenge? Do you want a career with a world leading provider of industrial solutions?

Learn more about us on [www.atlascopco.com/careers](http://www.atlascopco.com/careers). The careers pages on our website offer an overview of Atlas Copco's philosophy and strategy, employee testimonials and, of course, links to our job opportunities. Please learn more about our company, values, culture and strategy, and see whether they may be the right fit for you. The next step you take may be the start of a new and exciting journey with Atlas Copco!





# WATER FOR ALL: WHERE THERE'S A WILL THERE'S A WELL

Founded in 1984 by Atlas Copco employees in Sweden, the organization is devoted to the motto "clean drinking water is a human right" and raises money to support projects that give people in need access to safe, clean drinking water. Its funds are raised through voluntary employee donations, which are judiciously distributed to local partner organizations to dig, drill or protect natural wells in countries where safe drinking water is in short supply. Today, we have local Water for All organizations in more than 30 countries such as Afghanistan, Burkina Faso, China, India, South Africa, Kenya and Uganda, all managed by Atlas Copco employees.

Water for All had its first activity in China in 2004. More than 3 000 employees in China are contributing each month. All companies in China participate in the Water for All project and even in some companies, the employee's participation rate reached 100%. Employee participation is still increasing continuously.

Atlas Copco (China) Investment Co., Ltd. has an overall coordination task which is supported by Corporate Communication and the Holding Water for All Coordinator. With Atlas Copco group, each company has a Water for All coordinator.

In China, we work with Plan International – a UK based NGO with branches in our region. We select one project per year where the funds will go. Our employee visits to the project to witness the project and meet with the villagers through lucky draws from the donors.

By 2014, Water for All China project has set foot in the regions such as Tibet, Longde county in Ningxia, Xixiang county in Shaanxi, Jiaxian in Shaanxi and Guangnan county in Yunnan, benefiting over 20 000 local residents including more than 5 500 children.

## Atlas Copco China Headquarters

Atlas Copco (China) Investment Co., Ltd.  
16/F., China Venturetech Plaza, 819 Nanjing West Road, Shanghai 200041, China  
T: (021) 2208 4800 F: (021) 2208 4769

## Four Business Areas of Atlas Copco China

### Compressor Technique

Atlas Copco (Shanghai) Trading Co., Ltd.  
- Compressor Technique Customer Center  
1100 Jinsui Road, Jinqiao Export Processing Zone, Pudong New District, Shanghai 201206, China  
T: (021) 6108 2388 F: (021) 6108 2488

Atlas Copco (Shanghai) Process Equipment Co., Ltd.  
899 Ceng Lin Road, Lingang New City, Pudong New Area, Shanghai 201306, China  
T: (021) 6097 8100 F: (021) 6097 8144

Atlas Copco (Wuxi) Compressor Co., Ltd.  
Plant 1: 22 Changjiang Road, New District, Wuxi, Jiangsu Province 214028, China  
T: (0510) 6665 5896 F: (0510) 6665 5884  
Plant 2: 45 Ximei Road, New District, Wuxi, Jiangsu Province 214028, China  
T: (0510) 6666 6992 F: (0510) 6666 6812

Atlas Copco (Wuxi) Research and Development Center Co., Ltd.  
45 Ximei Road, New District, Wuxi, Jiangsu Province 214028, China  
T: (0510) 6666 6992 F: (0510) 6666 6809

Atlas Copco Asia Pacific (Shanghai) Distribution Center  
1/F., Warehouse 3, 31 Chuanhui Road, Pudong New District, Shanghai 201202, China  
T: (021) 6016 7900

Shanghai Beacon Medaes Medical Gas Engineering Consulting Co., Ltd.  
1100 Jinsui Road, Jinqiao Export Processing Zone, Pudong New District, Shanghai 201206, China  
T: (021) 6108 2388 F: (021) 6108 2488

Edmac (Shanghai) Trading Co., Ltd.  
528 Laodong Road, Jiading District, Shanghai 201809, China  
T: (021) 5994 6626 F: (021) 5994 6025

Liuzhou Tech Machinery Co., Ltd.  
Customer Center: Room 2402, 24/F., Building 5, 388 Daduhe Road, Putuo District, Shanghai 200062, China  
T: (021) 6036 3999 F: (021) 6036 3936  
Product Company: B-22-1, Yanghe Industrial Development Zone, Liuzhou, Guangxi Province 545006, China  
T: (0772) 359 1014 F: (0772) 317 2510

Bolaite (Shanghai) Compressor Co., Ltd.  
528 Laodong Road, Jiading District, Shanghai 201809, China  
T: (021) 5994 9888 F: (021) 5994 6638

Guangzhou Linghein Compressor Co., Ltd.  
12 Yongfeng Road, Shiji Town, Panyu District, Guangzhou, Guangdong Province 511450, China  
T: (020) 6291 2021 F: (020) 6193 4006

Kunshan Q-Tech Air System Technologies Ltd.  
Customer Center: Room 2405, Building 5, Hua Hong Commercial Centre, 388 Daduhe Road, Putuo District, Shanghai 200062, China  
T: (021) 6278 9702 F: (021) 6278 7826

Wuxi Pneumatech Air & Gas Purity Equipment Co., Ltd.  
Room 1211, Juna Plaza, 6 Yonghe Road, Nanchang District, Wuxi, Jiangsu Province 214021, China  
T: (0510) 6665 5669 F: (0510) 8553 9533

Wuxi Shengda Air & Gas Purity Equipment Co., Ltd.  
Room 1211, Juna Plaza, 6 Yonghe Road, Nanchang District, Wuxi, Jiangsu Province 214021, China  
T: (0510) 6665 5669 F: (0510) 8553 9533

Edwards Technologies Trading (Shanghai) Co., Ltd.  
Room 301, Building 7, 3000 LongDong Avenue, Pudong New District, Shanghai 201203, China  
T: 400 111 9618 F: (021) 2025 5175

Edwards Technologies Vacuum Engineering (Shanghai) Co., Ltd.  
23 North Fu Te Road, China (Shanghai) Pilot Free Trade Zone, Pudong New District, Shanghai 200131, China  
T: 400 111 9618 F: (021) 5866 9993

Edwards Technologies Vacuum Engineering (Xi'an) Co., Ltd.  
1150 Baoba Road, Zonghebaoshui Zone, High-tech Zone, Xi'an, Shanxi Province 710117, China  
T: (029) 6252 1857 F: (029) 6252 1858

Edwards Technologies Vacuum Engineering (Qingdao) Co., Ltd.  
800 Huadong Road, High-tech Development Zone Chengyang, Qingdao, Shandong Province 266000, China  
T: (0532) 5567 8270 F: (0532) 5567 9661

Edwards Technologies Ltd.  
1 Renyi Street, Jhunan Town, Miaoli County 35059, Taiwan  
T: +886 3758 1000 F: +886 3758 1608

### Industrial Technique

Atlas Copco (Shanghai) Trading Co., Ltd.  
- Industrial Technique Customer Center  
Building 26, 518 Xinzhuang Hwy, Songjiang District, Shanghai 201612, China  
T: (021) 2403 7500 F: (021) 2403 7569

Shanghai Tooltec Industrial Tool Co., Ltd.  
2/F., Building 37, 518 Xinzhuang Hwy, Songjiang District, Shanghai 201612, China  
T: (021) 2416 5100 F: (021) 2416 5202

SCA Schucker Automation Equipment (Shanghai) Co., Ltd.  
Building 3, 816 Ronghua Road, Songjiang District, Shanghai 201611, China  
T: (021) 5774 6198 F: (021) 5774 7635

### Mining and Rock Excavation Technique

Atlas Copco (China) Mining & Construction Equipment Trading Co., Ltd.  
2 HengTai Road, Nanjing Economic & Technological Development Zone, Nanjing, Jiangsu Province 210038, China  
T: (025) 8696 7800 F: (025) 8696 7850

Atlas Copco (Nanjing) Construction & Mining Equipment Ltd.  
2 HengTai Road, Nanjing Economic & Technological Development Zone, Nanjing, Jiangsu Province 210038, China  
T: (025) 8696 7340 F: (025) 8696 8621

Atlas Copco (Zhangjiakou) Construction & Mining Equipment Ltd.  
1 South Changzhi Road, Xuanhua District, Zhangjiakou, Hebei Province 075105, China  
T: (0313) 3185 266 F: (0313) 3185 297

Atlas Copco (Shenyang) Construction and Mining Equipment Co., Ltd.  
12-4 KunMingHu Street Economic & Technological Development Zone ShenYang, Liaoning Province 110027, China  
T: (024) 2581 1769 F: (024) 2581 0482

Shandong Rock Drilling Tools Co., Ltd.  
3 Sanshan Road, Xihu Town, Yanggu County, Shandong Province 252311, China  
T: (0635) 651 2779 F: (0635) 651 1880

### Construction Technique

Atlas Copco (Shanghai) Trading Co., Ltd.  
- Construction Technique Customer Center  
Atlas Copco (Shanghai) Equipment Rental Co., Ltd.  
1100 Jinsui Road, Jinqiao Export Processing Zone, Pudong New Area, Shanghai 201206, China  
T: (021) 6108 2388 F: (021) 6108 2488

Dynapac (China) Compaction & Paving Equipment Co., Ltd.  
38 QuanWang Road, WuQing High Tech Industrial Park, Tianjin 301700, China  
T: (022) 8297 5860 F: (022) 8211 8080

### Hong Kong and Taiwan

Atlas Copco China/HK Ltd.  
Unit 1601, Tower 2, Grand Central Plaza, 138 Shatin Rural Committee Road Shatin, New Territories, Hong Kong  
T: +852 2797 6600 F: +852 2172 4248

Atlas Copco Taiwan Ltd.  
No. 8, Alley 80, Lane 298, Gong 2nd Road, Longtan, Tao Yuan 32559, Taiwan  
T: +886 3479 6838 F: +886 3479 6820

2015 © Atlas Copco (China) Investment Co., Ltd., Shanghai, China  
Print: China. Edition 1, 2015. 8815 8010 02  
Photo: Atlas Copco

The contents of this publication are copyrighted by the publisher. Any reproduction or even reference is strictly prohibited, without prior written consent. We have tried every effort to keep the information contained in this publication accurate. However, in no event will we accept any liability to any party for damages, whether direct, indirect, or collateral for any use of the information. Any cost saving and profit growth mentioned in this publication are based on customer experiences, and therefore constitute no guarantee that future result will be consistent with such performance.

## ***COMMITTED TO SUSTAINABLE PRODUCTIVITY***

We stand by our responsibilities towards our customers,  
towards the environment and the people around us.  
We make performance stand the test of time.  
This is what we call — Sustainable Productivity.

**Atlas Copco (China) Investment Co., Ltd.**  
16/F., China Venturetech Plaza, 819 Nanjing West Road  
Shanghai 200041, China [www.atlascopco.com.cn](http://www.atlascopco.com.cn)

The Atlas Copco logo is displayed within a blue rectangular area. It features the company name "Atlas Copco" in a white, italicized serif font, centered between two horizontal white bars.