

2019 FIELD OF

# DREAMS

*Elite Simmental & SimAngus Genetics*



SUNDAY 10/6/19

Harker Sale Facility • Hope, Indiana • 12:00 Noon

**HARKER  
SIMMENTALS**

**HOBBS FARMS  
HF  
CATTLE**

**BESHEARS**

**NICHOLS  
CATTLE  
COMPANY**

**Hege**  
cattle company

**H<sub>2</sub>O'S  
Cattle**

**HF**  
Hoffman Farms



# WELCOME!

## DEAR FELLOW CATTLEMEN

On behalf of Harker Simmentals and the Field of Dreams team, we would like to welcome you to the 2019 Field of Dreams Sale.

It's hard to believe that this will be the 15th year for hosting the Field of Dreams in Hope. A lot has changed in the last decade, but one thing as remained the same – the Field of Dreams consignors have remained committed in bringing their best stock to the Field of Dreams Sale and offering you the opportunity to take one home. We hope that you will come and enjoy Hoosier Hospitality at its finest. Make sure you attend the presale social on Saturday evening and then enjoy more great food and hospitality on sale day.

We have diligently been working on improving our genetic base while striving for continuous improvement to help project both our customers and the breed into a higher standard in the future. This year is like any other – the breeders in this sale feel that they have brought their best and hope your opinion is the same as the consignors.

Make is a Simmental weekend and attend the Factory Direct sale on Friday evening, October 4th and the Belles of the Bluegrass on Saturday, October 5th. The Field of Dreams Sale site is located ten miles east of the Exit 76 Antique Mall and the Edinburgh Outlet Mall just off of I-65. Make it a Simmental weekend and join us for a day of good food, good friends and good cattle!

Please feel free to call any of the Field of Dreams team members or our sale management, Eberspacher Enterprises, for more information.  
**See you on October 6th!**

### THE FIELD OF DREAMS TEAM AND THE HARKER FAMILY

John & Barbara  
Danny, Jill, Luke & Chase  
Ben, Ashely, Gracie, Laynie and Hudson

Proud  
Supporter:  
AMERICAN SIMMENTAL SIMBRAH



### Directions to Harker Simmentals Sale Facility:

**From I-74/Shelbyville:** Travel 15 miles south to County Road 800 North. Turn left or east on 800 North and travel east for 2 miles to County Road 900 East. Turn right or south on 900 East and travel 1 1/2 miles to sale site.

**From I-70/Greenfield:** Travel 36 miles south to Co Road 800 North. Turn left or east on 800 North and travel east for miles to County Road 900 East. Turn south on 900 East and travel 1 1/2 miles to sale site.

**From I-65/Seymour:** Exit onto Highway 50 East. Travel 1 1/2 miles to the intersection of Highway 31. Turn left or north on Highway 31. Travel north 15 miles to State Road 46/State Road 9. Turn right and follow State Road 46/State Road 9 north 12 miles to Hope. On the north edge of Hope, turn right or east onto Main Street/Jackson Street. Follow this street through town for 3 miles till the road Ts into 900 East at the sale site.

**From I-65/Indianapolis/Seymour:** Take exit 76B for Highway 31 North. Travel north on Highway 31 for 1 mile to County Road 800 North. Turn right or east on 800 North. Travel 14 miles to State Road 9. Continue across State Road 9, traveling east for 2 miles to County Road 900 East. Turn right or south on 900 East and travel 1 1/2 miles to sale site.

## The 2019 Dream Team:

### HARKER SIMMENTALS

John & Barbara Harker  
812-546-5578  
Ben, Ashley, Gracie, Laynie & Hudson Harker 812-371-2926  
Dan, Jill, Luke & Chase Harker  
812-546-5331 • 812-371-6881

### HOBBS FARMS HF CATTLE

Doyle & Scott Hobbs  
and Family  
Scott's Cell 765-438-3366

### BESHEARS

Bobby Beshears  
765-717-4789  
Kenny 765-993-3453  
Dave 765-716-0599

### NICHOLS CATTLE COMPANY

Steve & Chere, Woody & Kayla  
Nichols  
Woody 765-586-6927



Mark Hege and Family  
765-318-1487 • 317-538-9287



Trey & Brenda Hardesty  
708-774-1547



Karol Ann Hoffman  
270-834-0536  
Johnnie Moore 270-670-7814

# Elite Simmental & SimAngus Genetics

# 2019 FIELD OF DREAMS



Join us on Sunday • 12 Noon Sharp • October 6th • Hope, Indiana

## Sale Location

Harker Simmentals Sale Facility, 11595 N 900 E  
Hope, Indiana 47246 (map on opposite page)

## Schedule

### Saturday, October 5th, 2019

5:00 p.m. Cattle Viewing and Cookout – Everyone Welcome!

### Sunday, October 6th, 2019

8:00 a.m. Sale Cattle on Display  
11:00 a.m. Complimentary Lunch  
12:00 Noon EDT 2019 Field of Dreams Sale

**Airports** Sale site is 1 hour from Indianapolis Airport; 1-1/2 hours from Cincinnati Airport; 1 3/4 hours from Louisville Airport.

**Lodging in Edinburgh, IN** *Beer Festival in Columbus same weekend. Make reservations early!*  
Hampton Inn - Greensburg (Field of Dreams block reserved).....812-663-5000  
Holiday Inn Express - Edinburgh (Field of Dreams block reserved).....812-526-4919  
Hilton Garden Inn ..... 812-526-8600 Red Roof Inn..... 812-526-9747  
Comfort Inn ..... 812-526-9899 Best Western..... 812-526-9883

## Dining in Edinburgh, IN

Located at I-65 and Hwy. 31 (Exit 76B) at the Edinburgh Outlet Mall, Edinburgh, IN:  
Montana Mike's, Ruby Tuesday's, Max & Erma's, Cracker Barrel, Arbys, McDonalds,  
Subway, Hardees.

## Terms & Conditions

All cattle sell under the Suggested Sale Terms & Conditions of the American Simmental Association with the following exception on females that have been in exhibition. Many times, heifers that are shown can often be fed to an extreme level of obesity and are often not allowed to be bred in ideal situations resulting in an open female at the end of their show career. This situation is out of the hands of the breeder therefore, we will hold the owner/feeder responsible for any reproduction issues and no longer guarantee the heifer as a breeder. If this situation does result, the breeders of the Field of Dreams Sale will still make an attempt to assist the owner in getting this female bred through the following two breeding seasons. Checks payable to Eberspacher Ent. Inc.

## Announcements

Announcements made sale day and from the auction block during the sale take precedence over printed material associated with this sale. Anyone attending this sale attends at their own risk. Breeders or any of the sale force will not be held responsible for any personal injury for attending this sale.

**EPDs** Please note that EPDs may change from the time the sale catalog is printed until registration papers are transferred. EPDs listed are Fall 2019 (9-3-19).

**Trucking** Field of Dreams breeders and sale force will assist buyers in coordinating and making the most economical trucking arrangements possible.

## Insurance

Insurance available sale day through sale management and Jame Secondino, American Livestock Ins., 812-208-0956



**Sale Day Phones:**  
**812-371-6881**  
**612-805-7405**

## Marketing Representatives

Val Eberspacher, EE Sales  
612-805-7405  
Kent Jaecke 405-408-2440  
Tommy Carper 540-336-2737  
Mark Murphy 937-459-2530

## Auctioneer

Col. Jered Shipman 806-983-7226

## Sale Management

Val & Lori Eberspacher

*Eberspacher*  
ENTERPRISES INC.

Office 507-532-6694  
Val's Cell 612-805-7405  
Fax 507-532-9457  
2904 Co Rd 6 • Marshall, MN 56258  
sales@ebersale.com  
www.ebersale.com



Download the Ebersale phone APP  
for all current sale information!

Viewing & Bidding Available Online!

**LiveAuctions** TV



Scan with  
your smart  
phone to  
view catalog  
online!

SUNDAY, OCTOBER 6TH AT 12:00 PM SHARP



1

# Harkers Guardian Angel G119

ASA#3595384 Tattoo: G119 Dbl Polled Black Purebred  
 BD: 1-22-19 Adj. BW: 75 Adj. WW: N/A

CE	BW	WW	YW	ADG	MCE	Milk	MWW	Stay	DOC	CW	YG	Marb	BF	REA	API	TI
13	-.1	84	128	.28	7	26	67	12	12.8	44.2	-.41	.13	-.101	.95	135	85



TJ Main Event 503B  
 CDI Innovator 325D  
 CDI Ms. Shear Force 49U  
 W/C Executive Order 8543B  
 HILB/MBCC Fairy Dust  
 HILB Fairy Tale B5

**Harker Simmentals** • This Innovator daughter is out of an Executive Order first calf heifer that has done a terrific job of raising this complete and broody female. If you are into cattle that are hard to poke a hole in, make sure you look Angel up on sale day. She is an outstanding prospect.



HILB/MBCC Fairy Dust Dam



HILB Fairy Tale B5 Grandam

2

# Harkers Groovy Lovin G112

ASA#3595379 Tattoo: G112  
 Homo Polled Hetero Black 1/2 SM 1/2 AR BD: 1-17-19 Adj. BW: 73 Adj. WW: N/A

- W/C Relentless 32C Yardley Utah Y361
- Miss Werning KP 8543U
- Six Mile Shadow 452U Red Six Mile Mastermind 854M
- Red Six Mile Shadow 776L

CE	BW	WW	YW	ADG	MCE	Milk	MWW	Stay	DOC	CW	YG	Marb	BF	REA	API	TI
8	3.2	63	87	.16	5	22	53	16	12.1	14.4	-.18	.28	-.029	.42	117	64

**Harker Simmentals** • This pair of Relentless daughters comes to you from one of our favorite up and coming donor cows, Dinah Mite. They put as much rib, mass and total dimension into a brood cow package as any pair of females you will find. The structure these females possess is second to none. We guarantee you will see more great things to come from this cow family. Buy with confidence! G112 is one of Danny's picks of the heifers calves this year!



3

# Harkers Gisele G117

ASA#3595381 Tattoo: G117  
 Dbl Polled Black Purebred BD: 1-21-19  
 Adj. BW: 80 ET Adj. WW: N/A

- Yardley Utah Y361
- W/C Relentless 32C
- Miss Werning KP 8543U
- LLSF Uprising Z925
- Harkers Dinah Mite D133
- HILB Covergirl A9

CE	BW	WW	YW	ADG	MCE	Milk	MWW	Stay	DOC	CW	YG	Marb	BF	REA	API	TI
10	2.9	68	94	.16	5	20	53	13	12.6	17.3	-.46	.05	-.105	.73	115	68



Harkers Dinah Mite D133 Dam

Viewing & Bidding Available Online!  
**LiveAuctions.TV**



4

## HF Sapphire 507G

ASA#3595046 Tattoo: 507G

Polled Black Baldy Purebred BD: 1-20-19 Adj. BW: 88 ET Adj. WW: N/A

Pedigree for Lots 4 & 4A:

W/C Loaded Up 1119Y

Jass On The Mark 69D

Jass Sable's Time 53X

SS Goldmine L42

Miss Knockout 74T

Slow Poke 74R

**Hobbs Farms** • We are selling choice of these two awesome On The Mark daughters. HF Angel is a long bodied, big bellied angular female that looks great when you put her in motion. HF Sapphire is one powerfully made heifer but still maintains her femininity. She is big footed, big boned and big ribbed. Either one of these Knockout 74T females will show but most importantly in the tough times, they have donor written all over them.

CE	BW	WW	YW	ADG	MCE	Milk	MWW	Stay	DOC	CW	YG	Marb	BF	REA	API	TI
9	2.7	65	89	.15	5	18	51	15	7.4	24.0	-.51	-.08	-.132	.74	110	63



4A

## HF Angel 276G

ASA#3595045 Tattoo: 276G

Polled Black Purebred BD: 2-7-19 Adj. BW: 78 ET Adj. WW: N/A

CE	BW	WW	YW	ADG	MCE	Milk	MWW	Stay	DOC	CW	YG	Marb	BF	REA	API	TI
9	2.7	65	89	.15	5	18	51	15	7.4	24.0	-.51	-.08	-.132	.74	110	63



*Selling Choice of Lots 4 or 4A!*



Jass On The Mark 69D Sire



Miss Knockout 74T Dam

5

## HF Charisma 250G

ASA#3595044 Tattoo: 250G

Polled Black Purebred BD: 2-5-19

Adj. BW: 81 ET Adj. WW: N/A

CE	BW	WW	YW	ADG	MCE	Milk	MWW	Stay	DOC	CW	YG	Marb	BF	REA	API	TI
8	3.2	62	81	.12	3	21	52	13	10.2	4.8	-.52	-.04	-.117	.65	105	62

Yardley Utah Y361

W/C Relentless 32C

Miss Werning KP 8543U

SS Goldmine L42

Miss Knockout 74T

Slow Poke 74R



W/C Relentless 32C Sire

**Hobbs Farms** • This Relentless daughter is a unique individual. She's powerfully made, bold ribbed and flat shouldered. This one moves really well and is picture perfect as you view her from the side. Add in the fact her dam is the legendary 74T and you have the makings of a great one. Whether you decide to show this one or just leave the halter off and make her a donor, she will be a money maker.





**6**

## Besh Ms. Ethel GW24 GZF4

ASA#(3601246) Tattoo: GW24 Polled Black Purebred  
BD: 2-6-19 Adj. BW: 87 ET Adj. WW: N/A

CE	BW	WW	YW	ADG	MCE	Milk	MWW	Stay	DOC	CW	YG	Marb	BF	REA	API	TI
9	2.8	74	111	.24	5	18	55	14	9.7	34.7	-.49	-.09	-.13	.83	110	68



Mr. NLC Upgrade U8676  
Mr. TR Hammer 308A ET  
SVF/HS Expecting A Dream  
Beshears True Man T7  
Besh Ethel W24  
Beshears New Years Eve

**Beshears Simmentals** - We ought to have our heads checked for taking so long to flush Ethel. She had a very successful show career capping it off with being named Reserve female at the Dixie Nationals. Year after year, she kicks out top shelf quality calves. All that being said, she has a spot solidified in the front of our donor pen. These two hotties are prime examples of what she is capable of. Study the neck extension, perfect foot and leg structure, belly shape and hair these two possess. If you're looking for show heifers, take an extra look here.

**7**

## Besh Ms. Ethel GW24

ASA#3601245 Tattoo: GW24  
Polled Black Purebred BD: 1-12-19  
Adj. BW: 89 Adj. WW: N/A

CE	BW	WW	YW	ADG	MCE	Milk	MWW	Stay	DOC	CW	YG	Marb	BF	REA	API	TI
11	1.6	77	114	.23	7	24	62	15	12.5	40.0	-.45	.08	-.117	.88	129	77

TJ Main Event 503B  
CDI Innovator 325D  
CDI Ms. Shear Force 49U  
Beshears True Man T7  
Besh Ethel W24  
Beshears New Years Eve



Besh Ethel W24  
Dam



CDI Innovator 325D  
Sire



**8**

## Besh Ms. Silk GC19

ASA#3601242 Tattoo: GC19  
Homo Polled Homo Black Purebred BD: 1-17-19 Adj. BW: 83 ET Twin Adj. WW: N/A

CE	BW	WW	YW	ADG	MCE	Milk	MWW	Stay	DOC	CW	YG	Marb	BF	REA	API	TI
14	.1	76	112	.23	8	25	63	18	13.8	41.6	-.43	.16	-.107	.92	146	80



TJ Main Event 503B  
CDI Innovator 325D  
CDI Ms. Shear Force 49U  
CNS Dream On L186  
SOSF Ebony's Black Silk  
SOSF Ebony's Joy L-123



SOSF Ebony's Black Silk  
Dam

**Beshears Simmentals** - I keep thinking Silk's calves will someday fall behind the industries style, but that day is sure not now. Silk has had many high selling females walk through the FOD ring and in my eyes this chunk should be no different. If your looking for one that is sound, stout, great numbered, and could use a pay loader tire for a belt. Search is over, donor or show heifer, here she is.





## Harkers Galaxy Star G111

ASA#3595374 Tattoo: G111

Polled Black Purebred BD: 1-17-19 Adj. BW: 74 Adj. WW: N/A

CE	BW	WW	YW	ADG	MCE	Milk	MWW	Stay	DOC	CW	YG	Marb	BF	REA	API	TI
7	3.6	63	93	.19	3	20	51	11	6.0	30.1	-.45	-.01	-.105	.84	101	62

- CNS Pays To Dream T759
- SC Pay The Price C11
- LLSF Ura Baby Doll U194
- Harkers/JS Domination
- JS Flirtin' 26Z
- JS Flatout Flirty 46T



**Harker Simmentals** - Galaxy Star is a very intriguing built mid-January female. She comes to you from the same cow family the famous triple crown winner, Boots, that was shown by the Bloomberg and Griswold families a few years ago. I love the rib shape of this heifer. She powers up very nicely from behind. If you want one that's built for the long haul, look her up on sale day.



JS Flatout Flirty 46T Grandam



## Harkers Gucci G115

ASA#3595383 Tattoo: G115

Dbl Polled Black Purebred BD: 1-30-19 Adj. BW: 85 Adj. WW: N/A

CE	BW	WW	YW	ADG	MCE	Milk	MWW	Stay	DOC	CW	YG	Marb	BF	REA	API	TI
11	1.5	78	118	.25	6	24	63	17	13.0	39.6	-.39	.16	-.105	.79	137	79



- TJ Main Event 503B
- CDI Innovator 325D
- CDI Ms. Shear Force 49U
- Harkers Icon
- CMFM Valentine 048C
- RP/MP Ms. Valentine 013U

**Harker Simmentals** - This Innovator daughter comes to you from an outstanding Icon cow that descends from the Valentine cow family. The Innovators that were exhibited at the 2019 AJSA National Classic were very well accepted and were very competitive. We are extremely excited to watch this heifer mature into an exciting show heifer and mature cow.



CMFM Valentine 048C Dam



## NIC Miss Chyna 951G

ASA#Pending Tattoo: 951G

Polled Black Purebred BD: 1-20-19 Act. BW: N/A Act. WW: N/A

EST.	CE	BW	WW	YW	ADG	MCE	Milk	MWW	Stay	DOC	CW	YG	Marb	BF	REA	API	TI
10	3.7	72	100	.17	5	19	55	16	11.05	19.7	-.50	.02	-.11	.86	117	69	

- Yardley Utah Y361
- W/C Relentless 32C
- Miss Werning KP 8543U
- Mr. NLC Upgrade U8676
- Miss Chyna 253Z
- Double D Blk Chyna



**Nichols Cattle Company** - When I went thru my buddy Steve Hicks' calves last spring, I knew WC Relentless was going to be a big part of my breeding program for this set of babies. I love how he has complimented some of my more rugged cows without sacrificing functionality. I am way in on this heifer calf that will be a ton of fun to drag around in the show string, and be an even better matriarch for years to come.



12

**Besh Ms. Gotta Love Me G029**

ASA#(3544262) Tattoo: G029  
**Polled Black Purebred** BD: 2-3-19  
 Adj. BW: 85 ET Adj. WW: N/A

EST.	CE	BW	WW	YW	ADG	MCE	Milk	MWW	Stay	DOC	CW	YG	Marb	BF	REA	API	TI
8	2.65	64	93	.18	5	24	56	15	6.8	28.2	-.38	-.04	-.10	.65	109	63	



**Pedigree for Lots 12 & 12A:**  
 SVF Steel Force S701  
 FBFS Wheel Man 649W  
 SVF Star Struck S199  
 3C Macho M450 BZ  
 ETR/SS Gotta Love Me U311  
 NJC SVF Love Me Don't U



ETR/SS Gotta Love Me U311  
 Dam

12A

**Besh Ms. You Love Me GU16**

EST.	CE	BW	WW	YW	ADG	MCE	Milk	MWW	Stay	DOC	CW	YG	Marb	BF	REA	API	TI
8	2.65	64	93	.18	5	24	56	15	6.8	28.2	-.38	-.04	-.10	.65	109	63	

ASA#(3601241) Tattoo: GU16  
**Polled Black Purebred** BD: 2-18-19  
 Adj. BW: 91 ET Adj. WW: N/A

**Beshears Simmentals** • They say great cows come from great cow families and that is just what we have here. Gotta Love Me was National Champion Female in Kansas City and Fort Worth and was also Reserve Overall at the JR Nationals. She was a prolific donor for Circle M Farms and Griswold and has produced many high sellers. These two daughters should follow closely in their mothers' footsteps. You have to appreciate the bone, neck extension, and stoutest they exhibited. Combine that with the consistency in pedigree with a National Champion on both sides and what's not to like?



13

**NIC Miss Knockout 956G**

EST.	CE	BW	WW	YW	ADG	MCE	Milk	MWW	Stay	DOC	CW	YG	Marb	BF	REA	API	TI
6	3.5	59	82	.14	2	23	53	13	3.4	11.7	-.50	-.02	-.12	.60	100	60	

ASA#Pending Tattoo: 956G  
**Dbl Polled Black Purebred** BD: 2-9-19 Act. BW: N/A Act. WW: N/A



**Profit**  
 WS Pilgrim H182U  
 WAGR Panarama 204Z  
 Felt Next Big Thing 54T  
 HF Knockout NBT 460C  
 Miss Knockout 74T



Miss Knockout 74T  
 Grandam

**Nichols Cattle Company** • I have been a fan of Profit heifers and knew I had to flush my Knockout 460C donor that way. This 956 heifer has all the power and mass her maternal pedigree is known for with a shot of style from her daddy's side. The sleek front end and overall eye appeal this heifer possesses is one I see loads of future in. Foundation type of a female.



14

## Harkers Galliant Bell G120

ASA#3595373 Tattoo: G120  
**Homo Polled Black Baldy 3/4 SM 1/4 AN**  
 BD: 2-1-19 Adj. BW: 74 Adj. WW: N/A

W/C Loaded Up 1119Y  
 Jass On The Mark 69D  
 Jass Sable's Time 53X  
 Harkers Icon  
 Harkers Crystal Belle  
 Miss Yardley S61

**Harker Simmentals** • Everyone loves a baldy and this one is no exception! This tremendous 3/4 blood On the Mark female has style to burn. Her mother is an outstanding young Icon female with a fabulous udder. The future is bright beyond her days in the show ring.

CE	BW	WW	YW	ADG	MCE	Milk	MWW	Stay	DOC	CW	YG	Marb	BF	REA	API	TI
12	1.9	67	97	.19	7	22	55	18	8.9	35.6	-.31	.10	-.081	.67	121	65



15

## Heges Gabby G105

ASA#3599665 Tattoo: G105  
**Polled Black Baldy 3/4 SM 1/4 AN** BD: 2-3-19 Adj. BW: 81 Adj. WW: N/A



W/C Loaded Up 1119Y  
 Jass On The Mark 69D  
 Jass Sable's Time 53X  
 TC Grid Topper 355  
**Heges Gabby**  
 JSF Sunshine S52

**Hege Cattle Company** • This 3/4 blood female sure gets the blood flowing. When we pictured her, we knew she would stand out with her look and design. She is one whose feet and structure are ideal, making her an awesome breeding piece. A very attractive female that is sure to catch a lot of attention, a killer look along with the structural integrity for the long haul make us feel confident this female will be a nice herd addition for many people.

CE	BW	WW	YW	ADG	MCE	Milk	MWW	Stay	DOC	CW	YG	Marb	BF	REA	API	TI
12	2.1	66	99	.21	8	20	53	20	8.8	35.4	-.31	.12	-.080	.69	125	65

16

## Harkers Gamblin Girl G122

ASA#3595380 Tattoo: G122  
**Homo Polled Black Baldy 1/2 SM 1/2 AN**  
 BD: 2-1-19 Adj. BW: 71 Adj. WW: N/A

W/C Loaded Up 1119Y  
 Dameron Peg 539  
 Remington Lock N Load 54U  
 Aubreys Black Blaze III  
 Granger Great Falls 053  
 Dameron Peg 302

**Harker Simmentals**  
 • Baldy Alert!!! Here is a long bodied, level made and eye appealing Loaded Up daughter. This heifer will grab your attention and keep you coming back for more.

CE	BW	WW	YW	ADG	MCE	Milk	MWW	Stay	DOC	CW	YG	Marb	BF	REA	API	TI
12	.5	67	103	.22	8	27	61	18	9.9	38.2	-.21	.24	-.037	.73	131	71



*Juniors! Take a look!*



17

### Heges Galaxy G113

ASA#3599657 Tattoo: G113

DbI Polled Black Purebred BD: 2-12-19 Adj. BW: 78 ET Adj. WW: N/A

CE	BW	WW	YW	ADG	MCE	Milk	MWW	Stay	DOC	CW	YG	Marb	BF	REA	API	TI
10	2.9	70	95	.16	4	22	57	15	12.3	14.1	-.50	.06	-.111	.76	121	77



Heges Adele Dam

Yardley Utah Y361  
W/C Relentless 32C  
Miss Werning KP 8543U  
Mr. NLC Upgrade U8676  
Heges Adele  
STF Shimmering Lite U72K

**Hege Cattle Company** • Galaxy is a female that really puts together a lot of great pieces. One that when you analyze sure has that broody cow look tied together with a feminine package. Galaxy has always reminded us of her mother which is one of our shining donors so this female is sure to be one that will give many a great building block to a production program.

18

### Besh Ms. Ingrid GX25

ASA#3601244 Tattoo: GX25

DbI Polled Black Purebred BD: 2-11-19 Adj. BW: 91 Adj. WW: N/A

CE	BW	WW	YW	ADG	MCE	Milk	MWW	Stay	DOC	CW	YG	Marb	BF	REA	API	TI
9	2.5	78	115	.23	5	24	64	14	11.6	39.5	-.44	.10	-.117	.85	125	77

TJ Main Event 503B  
CDI Innovator 325D  
CDI Ms. Shear Force 49U  
Black Bear  
Besh Ms. Diva X25  
J2 Ms. Diva T04



**Beshears Simmentals** • GX25 is a little greener made right now, but you really can appreciate her lines, sleek front end and depth of body. Her dam, a Diva daughter, did produce a division winner at the Hoosier Beef Congress 3 years ago. Feed her and watch her grow into a great cow.



J2 Ms. Diva T04 Grandam

19

### Besh Ms. Eve GZ35

ASA#3601268 Tattoo: GZ35

DbI Polled Black Purebred BD: 2-21-19 Adj. BW: 86 Adj. WW: N/A

CE	BW	WW	YW	ADG	MCE	Milk	MWW	Stay	DOC	CW	YG	Marb	BF	REA	API	TI
8	3.0	68	98	.18	4	18	52	12	11.0	26.5	-.42	.12	-.100	.77	113	69



WS Pilgrim H182U  
Dozer  
WW3 Countess 169Y  
Beshears True Man T7  
Besh Ms. Trueman Z35  
Beshears New Years Eve

**Beshears Simmentals** • Show Heifer Alert! GZ35 is sound, long necked, stout, and fuzzier than a brood ewe in the middle of winter. She will be fun to parade around the ring all year long. Her dam is a full sister to our up and coming donor Ethel so there is some consistency is there. Don't be afraid to raise your hand.

Viewing & Bidding Available Online!  
**LiveAuctions.TV**



20

### Harkers Giada G138

ASA#3595376 Tattoo: G138  
Dbl Polled Black 3/4 SM 1/4 AN BD: 2-20-19

CE	BW	WW	YW	ADG	MCE	Milk	MWW	Stay	DOC	CW	YG	Marb	BF	REA	API	TI
11	1.2	59	84	.16	7	28	58	18	10.5	24.6	-.34	.13	-.080	.65	120	63

Adj. BW: 64 Adj. WW: N/A

Remington Lock N Load 54U  
W/C Loaded Up 1119Y  
Aubreys Black Blaze III  
Plainview Lutton E102  
Harkers Yarissa  
Harkers Tonie



**Harker Simmentals** - Wow - talk about a fancy show heifer prospect! This sexy fronted, cool looking gal floats around the lot. If want one that is built for the long haul, look up this hot little ticket. The cow family behind her is noted for raising National Champions like Cole Reiboldt's Reserve Champion Female at the 2015 American Royal and 2016 National Western Stock Show.

21

### Harker Gusty Breeze G137

ASA#3595382 Tattoo: G137  
Dbl Polled Black Purebred BD: 2-20-19 Adj. BW: 78 Adj. WW: N/A

CE	BW	WW	YW	ADG	MCE	Milk	MWW	Stay	DOC	CW	YG	Marb	BF	REA	API	TI
11	.8	71	104	.21	6	15	50	18	8.9	26.3	-.47	-.18	-.091	.99	120	67



S D S Graduate 006X  
CCR Wide Range 9005A  
CCR Ms. Apple 9332W  
Mr. HOC Broker  
Nabe Lucy D230  
J&C/SS Bernadette



Nabe Lucy D230 Dam

**Harker Simmentals** - This Wide Range daughter is backed by a tremendous, young Broker cow. Her dam was the 2017 Eastern Regional Grand Champion Purebred Female for Luke. Her sire has worked very well on Broker daughters in the past. Most notably is Chesney Steenhoek's Supreme Champion Heifer at the North American. This female is very complete and has a bright future as a competitive show heifer.

22

### Heges Gypsy Rose G108

ASA#3599661 Tattoo: G108  
Homo Polled Black 1/2 SM 1/2 AN BD: 2-23-19 Adj. BW: 78 ET Adj. WW: N/A

CE	BW	WW	YW	ADG	MCE	Milk	MWW	Stay	DOC	CW	YG	Marb	BF	REA	API	TI
10	2.2	73	111	.24	4	21	57	12	7.0	41.1	-.15	.31	-.037	.60	120	73

HTP/SVF Duracell T52  
HPF Quantum Leap Z952  
RP/MP Right To Love 015U  
S A V Record Harvest 2186  
LHF Forever Lady 503  
LHF Forever Lady 718



**Hege Cattle Company** - This half-blood defines brood cow for us phenotypically and genotypically. One that is just absolutely opened up about her rib shape with muscle expression to go along. Gypsy Rose is built from the ground up to be able to handle this type of physique, which makes us think highly of this girl. There is no question this one will be able to bring some much added value to anyone's operation.



**23**

**Harkers Goodnight Vienna G142**

ASA#3595377 Tattoo: G142  
 Dbl Polled Black Purebred BD: 3-1-19 Adj. BW: 78 ET Adj. WW: N/A

CE	BW	WW	YW	ADG	MCE	Milk	MWW	Stay	DOC	CW	YG	Marb	BF	REA	API	TI
8	1.8	63	93	.19	5	20	52	11	10.2	31.4	-.44	.10	-.103	.85	113	68

Pedigree & EPDs for Lots 23 & 23A:

CNS Pays To Dream T759

SC Pay The Price C11

LLSF Ura Baby Doll U194

GLS New Direction X184

HILB Covergirl A9

AJE Gabby R7



SC Pay The Price C11  
Sire



HILB Covergirl A9  
Dam

**23A**

**Harkers Gatlin G143**

ASA#3595385 Tattoo: G143  
 Dbl Polled Black Purebred BD: 3-1-19  
 Adj. BW: 84 ET Adj. WW: N/A



**23B**

**Harkers Gussied Up G144**

ASA#3595378 Tattoo: G144  
 Dbl Polled Black Purebred BD: 3-2-19  
 Adj. BW: 74 ET Adj. WW: N/A



**Harker Simmentals** • Here is a trio of Pay The Price daughters out of our favorite outcross donor cow, Covergirl. If you like sleek fronted and big bellied females with a perfect set of feet and legs, these heifers are for you. Gatlin G143 is as cool looking of a true March female that you will find. Goodnight Vienna G142 is as complete of a female that you will find. Gussied Up G144 may be a little greener than her sisters but definitely has a promising future as a show heifer and a cow.

Viewing & Bidding Available Online!  
**LiveAuctions.TV**



24

### Harkers Gee Whiz G134

ASA#3595372 Tattoo: G134

DbI Polled Black Star Purebred BD: 3-2-19 Adj. BW: 89 ET Adj. WW: N/A

CE	BW	WW	YW	ADG	MCE	Milk	MWW	Stay	DOC	CW	YG	Marb	BF	REA	API	TI
9	2.1	68	103	.22	5	21	55	11	13.2	30.8	-.50	.04	-.133	.81	112	70

Heads Up 20X ET

LLSF Uprising Z925

LLSF Untouchable U925

GLS New Direction X184

HILB Covergirl A9

AJE Gabby R7



**Harker Simmentals** - Here is a star headed beauty from a time tested and proven Uprising X Covergirl mating. This beauty will grab your attention with your eye appeal and overall balance. Females like Gee Whiz never go out of style.



HILB Covergirl A9 Dam

25

### Besh Ms. Soda G6

ASA#3601266 Tattoo: G6

DbI Polled Black Purebred BD: 3-8-19 Adj. BW: 90 ET Adj. WW: N/A

CE	BW	WW	YW	ADG	MCE	Milk	MWW	Stay	DOC	CW	YG	Marb	BF	REA	API	TI
8	2.5	71	103	.20	4	22	58	13	13.2	29.1	-.45	.05	-.105	.83	116	71



LLSF Pays to Believe ZU194

CNS Pays To Dream T759

LLSF Ura Baby Doll U194

HPF Cream Soda B334

LLSF Uprising Z925

IC Cream Soda R56

**Beshears Simmentals** - Soda is starting to settle in nicely in her donor role. Last year we sold a half-sister through this ring for \$2900 that started off her show career by winning her March class at the NAILE open show and went on to have a nice show career for Olivia Kuhn. A full sister to G6 won her class at the Kentucky Beef Expo and we are looking for bigger things to come this Fall. This mating to Pays To Believe has been very consistent. They start out a little greener made but as they mature, they sure are fun to show. G6 may be the best one yet. We love her depth, loose structure, and long skinny neck. If your serious about the show ring, get serious about buying this one.



HPF Cream Soda B334, Dam



Besh Ms. Soda E27 Full Sibling

26

### Besh/Hege Ms. Ginger Soda G334

ASA#3601265 Tattoo: G334

DbI Polled Red Purebred BD: 2-21-19

Adj. BW: 90 Adj. WW: N/A

CE	BW	WW	YW	ADG	MCE	Milk	MWW	Stay	DOC	CW	YG	Marb	BF	REA	API	TI
8	33.9	76	112	.22	3	19	57	13	13.6	27.5	-.43	.18	-.098	.82	122	75

WS Pilgrim H182U

Dozer

WW3 Countess 169Y

LLSF Uprising Z925

HPF Cream Soda B334

IC Cream Soda R56



**Beshears Simmentals & Hege Cattle Company**  
Ginger Soda is a female that we feel offers a tremendous amount of good. When we evaluate her, her mobility combined with her smooth design and fantastic look makes us really admire this female for her future. Backed by the notorious Cream Soda cow family, this one will be a good investment.



27

**Besh Ms. Wis G54**

ASA#3601264 Tattoo: G54  
 Dbl Polled Black Purebred BD: 3-19-19 Adj. BW: 86 ET Adj. WW: N/A

CE	BW	WW	YW	ADG	MCE	Milk	MWW	Stay	DOC	CW	YG	Marb	BF	REA	API	TI
12	2.1	72	107	.22	6	25	61	16	4.1	31.7	-.56	-.06	-.129	1.04	122	70



**Pedigree & EPDs for Lots 27 & 27A:**  
 HTP/SVF Duracell T52  
 HPF Quantum Leap Z952  
 RP/MP Right To Love 015U  
 Triple C Majic Man M211  
 Triple C Miss Wisconsin  
 Grace N10

**Beshears Simmentals** • Miss Wisconsin has had some good ones walk through the ring in Hope, Indiana, including an \$8,000 heifer that sold 3 years ago, but these two Quantum Leap daughters might just sit at the top. I love the consistency of this mating. If you like them correct, deep sided, naturally thick and slender necked, come take a gander because these two have it. Oh yes, and they have great hair if your wanting to show them before they make donors.

27A

**Besh Ms. Indiana GC48**

ASA#3601261  
 Tattoo: GC48  
 Dbl Polled Black Purebred  
 BD: 4-17-19  
 Adj. BW: 88 ET  
 Adj. WW: N/A



Triple C Miss Wisconsin Dam

28

**Besh Ms. Locket GE19**

ASA#3601267 Tattoo: GE19  
 Dbl Polled Black Baldy 1/2 SM 1/2 AN BD: 3-26-19 Adj. BW: 80 Adj. WW: N/A

CE	BW	WW	YW	ADG	MCE	Milk	MWW	Stay	DOC	CW	YG	Marb	BF	REA	API	TI
9	1.2	56	87	.19	4	26	54	10	9.8	21.7	-.21	.28	-.016	.68	109	65



Silveiras Conversion 8064  
 SAC Conversation  
 Laffins Farrah 0252  
 STF Lock Out Z44L  
 Besh Ms. Lockett EU19  
 Beshears Ms. U19

**Beshears Simmentals** • This stylish little half-blood catches my eye every time I walk in the barn. She is sound, cobra fronted, big ribbed and hairy. She has a good attitude and would be great for a young JR to parade around the show ring.

Viewing & Bidding Available Online!  
**LiveAuctions.TV**



29

### Besh Ms. Joy GD25

ASA#3601262 Tattoo: GD25

Dbl Polled Black Purebred BD: 5-2-19 Adj. BW: 87 Adj. WW: N/A

CE	BW	WW	YW	ADG	MCE	Milk	MWW	Stay	DOC	CW	YG	Marb	BF	REA	API	TI
11	.5	58	80	.13	6	23	53	16	11.0	25.1	-.49	-.05	-.117	.83	117	63

Beshears True Man T7

Besh Bull 739W

STF Miss 739W

WS A Step Up X27

Besh Ms. Joy D25

NJC/TJF Joy

**Beshears Simmentals** • I love this little May heifer. She is our youngest offering in the FOD and probably will sell before she is in her prime. But make no mistake, she will make a great cow. Her mother is a half-sister to Ebony's Joy and her phenotype is to be desired by many. If you're looking to be in an off division in the show ring and want one that is royally bred, she checks both boxes.



30

### Heges Forever Lady 940

AAA#19389827 Tattoo: 940

Purebred Angus BD: 12-16-18 Adj. BW: 82 Adj. WW: N/A

CED	BW	WW	YW	Milk	CW	Marb	REA	Fat	\$W	\$F	\$G	\$B
+3	+4.1	+48	+87	+17	+25	+37	+40	+0.08	+30	+84	+38	+122



Angus

Gambles Hot Rod  
 Silveiras Style 9303  
 Silveiras Elba 2520  
 S A V Record Harvest 2186  
 LHF Forever Lady 503  
 LHF Forever Lady 718

**Hege Cattle Company** • As we were selecting heifers to offer you through the Field of Dreams, we thought this Angus female was a no brainer. A female that has a silhouette many try to draw on paper, who is elegant in her front end with loads of body and lower rib. Shes sure to be a nice piece to add to a breeder's herd.

LHF Forever Lady 503  
 Dam



31

### Heges Forever Lady 410

AAA#Pending Tattoo: 410

Polled Black Purebred BD: 3-29-19 Act. BW: 75 Act. WW: N/A EPDs available sale day.

S A V Brilliance 8077

MSF Journey

BR Miss Ruby 5029

Colburn Primo 5153

Heges Forever Lady 222

LHF Forever Lady 503

**Heges Cattle Company** • A very stylish Angus female that we believe will just continue to get better and better. This heifer is out of a Primo and Lady 503 that was successfully campaigned by Dalton Davis. After seeing this female, we will be sure to breed her again this way. This Angus heifer puts an attractive package together that will be fun to mess with for a show season, and even more impressive when put into production.



Angus



**32**

**H2O's Miss Wonder F5**

ASA#3554140 Tattoo: F5  
 Dbl Polled Black Purebred BD: 9-9-18 Adj. BW: N/A Adj. WW: N/A

CE	BW	WW	YW	ADG	MCE	Milk	MWW	Stay	DOC	CW	YG	Marb	BF	REA	API	TI
10	3.3	67	89	.14	4	19	52	16	8.0	16.3	-.45	-.04	-.101	.72	113	64

*Fall Opens*



W/C Relentless 32C  
 Kriegers Wonder A570  
 Yardley Utah Y361  
 Miss Werning KP 8543U  
 Mr. HOC Broker  
 Miss CCF Sheza Wonder

**H2O's Farm** • This fall heifer is flat out great. Moves like a cat with an impeccable structure and a middle just like we are all looking for. We could have sold this heifer 10 times or more private treaty but wanted to bring her to this sale to show our appreciation for being included. You can very well look across the country for the rest of the year and not find one as good as this girl. She was crowned Supreme Heifer at the Jackson County Showdown in West Virginia during her short show career. Good luck and know that H2O's Cattle will be watching your progress with Miss Wonder with pure delight.

**33**

**RGH Barbie's Felicia 36F**

ASA#3560215 Tattoo: 36F  
 Dbl Polled Black Purebred BD: 9-24-18 Adj. BW: 79 ET Adj. WW: N/A

CE	BW	WW	YW	ADG	MCE	Milk	MWW	Stay	DOC	CW	YG	Marb	BF	REA	API	TI
11	2.0	85	131	.28	7	22	64	18	8.5	51.2	-.46	.16	-.108	1.14	144	83

MCM Top Grade O18X  
 Hook's Bounty 6B  
 Hook's Yuma 49Y  
 TNT Dynasty Z226  
 WHF Barbie 35B  
 WHF Trudy 35Y



WHF Barbie 35B, Dam



**Hoffman Farms** • A little different division here at the Field of Dreams. This future Senior yearling has the look and pedigree to compete and run next year. Felicia like her mother is a huge middled powerfully made sound moving prospect. Her dam, Barbie, is an outcross massive beast that we are just getting started with in our donor program. Bounty, her sire, has impressed us with growth and eye appeal transmitted to his calves with the added bonus of huge growth numbers in the mix. Felicia has a great disposition and easy to work with and would be great for a kid project.

**34**

**RGH FreedaJo 844U 305F**

ASA#3560219 Tattoo: 305F  
 Dbl Polled Black 3/4 SM 1/4 AN BD: 10-2-18 Adj. BW: 74 ET Adj. WW: N/A

CE	BW	WW	YW	ADG	MCE	Milk	MWW	Stay	DOC	CW	YG	Marb	BF	REA	API	TI
11	.4	67	100	.21	6	27	61	18	10.0	34.7	-.18	.16	-.023	.70	126	69



W/C Lock Down 206Z  
 W/C Load Limit 221B  
 Miss Werning 221Z  
 CNS Dream On L186  
 RDDS Ms. Dream On 844U  
 RDDS Ms. F Proto 838R 2SA

**Hoffman Farms** • 305F is a 3/4 blood Fall heifer prospect for the SimAngus™ division. 305F is a daughter of our 844U donor and the rising star Load Limit. She is a soft centered, big hipped, functional female that is easy to work with. She is the kind that after her show career is over she will be a cow that will perform like they should; easy doing, easy keeping and problem free.



RDDS Ms. Dream On 844U Dam





...  
**STF Onyx**  
 Full sibling  
 to Lot 35  
 Pregnancy!

**35**

**SVF Star X540** ASA#2576804 Dbl Polled Black Purebred SM  
 Tattoo: X540 BD: 12-3-10 BMR Explorer x SVF Sheza Star T803  
**Carrying Heifer Calf of STF Dominance T171 x GCF Miss Caliente**

STF Dominance T171    STF Dominique R170  
 MMP Kiss This 37L  
 GCF Miss Caliente    SAC Mr. MT 73G  
 SS Me Too L06

Est PM EPDs: 9 2.65 47 68 .13 3 17 40 14 7.2  
 Carcass: 13.95 -.47 -.10 -.13 .49 98 52

**H2O's Farm** • Here you go people, this extremely nice, big footed, good milking momma recip cow will be laying down a GCF Miss Caliente x STF Dominance heifer calf that is due February 1, 2020. That is correct, a full sibling to STF Onyx! Look at page 32 of the July/August Register to see where Caliente and Onyx rank in the Most Prolific Simmental Cows.



GCF Miss Caliente

**36**

**Selling One Flush to the bull of your choice on GCF Miss Caliente**

**37**

**Selling 3 Reverse Sort Heifer Embryos**  
**STF Dominance T171 x GCF Miss Caliente**

STF Dominance T171    STF Dominique R170  
 MMP Kiss This 37L  
 GCF Miss Caliente    SAC Mr. MT 73G  
 SS Me Too L06

Est PM EPDs: 9 2.65 47 68 .13 3 17 40 14 7.2  
 Carcass: 13.95 -.47 -.10 -.13 .49 98 52

**Embryos are full siblings to STF Onyx!**

**37A**

**Selling 3 Reverse Sort Heifer Embryos**  
**Profit x GCF Miss Caliente**

Profit                    WS Pilgrim H182U  
                               WAGR Panarama 204Z  
 GCF Miss Caliente    SAC Mr. MT 73G  
                               SS Me Too L06

Est PM EPDs: 7 3.1 50 70 .13 1.1 23 48 15 4.15  
 Carcass: 10.3 -.45 -.11 -.11 .58 99 53

**37B**

**Selling 3 Non-Sorted Embryos**  
**W/C Relentless 32C x GCF Miss Caliente**

W/C Relentless 32C    Yardley Utah Y361  
                               Miss Werning KP 8543U  
 GCF Miss Caliente    SAC Mr. MT 73G  
                               SS Me Too L06

Est PM EPDs: 9 2.95 53 70 .11 2 20 47 16 9.95  
 Carcass: 3.85 -.48 -.05 -.10 .65 107 56





**GW Miss GPRD 028X**  
 Sold in  
 "The One" Sale,  
 Denver 2019 for  
 \$26,000

# Embryos



W/C Fort Knox 609F, Embryo Sire



Profit, Embryo Sire

## 38 Selling 3 Non-Sorted Embryos

W/C Fort Knox 609F x GW Miss GPRD 028X

W/C Fort Knox 609F

W/C Bankroll 811D

K-LER Dolly's Queen 609D

GW Miss GPRD 028X

GW Predestined 701T

GW Miss Prem Beef 545U

**H2O's Farm**

Est PM EPDs: 12 .0 77 119 .26 6 23 62 18 13.65

Carcass: 33.7 -.36 .35 -.05 1.06 141 80

## 38A Selling 3 Non-Sorted Embryos

Profit x GW Miss GPRD 028X

Profit

WS Pilgrim H182U

WAGR Panarama 204Z

GW Miss GPRD 028X

GW Predestined 701T

GW Miss Prem Beef 545U

**H2O's Farm**

Est PM EPDs: 8 1.9 68 101 .21 4 23 57 17 8.0

Carcass: 24.75 -.35 .20 -.06 .78 120 68

## 39 H2Os Miss MAB R-Less F116

ASA#3439349 Dbl Polled Black 3/4 SM 5/32 AN 1/16 MA 1/32 MX Tattoo: F116

BD: 1-2-18 Adj. BW: N/A Adj. WW: N/A

CE	BW	WW	YW	ADG	MCE	Milk	MWW	Stay	DOC	CW	YG	Marb	BF	REA	API	TI
9	3.4	64	87	.14	4	17	49	12	13.3	13	-.45	.12	-.086	.78	103	62

# Bred Females



**Yardley Utah Y361**  
**W/C Relentless 32C**  
**Miss Werning KP 8543U**  
**Man Among Boys**  
**Miss 4D Bellatrix**  
**Miss 4D Icily**

**H2O's Farm** • This is an interesting pedigree that includes W/C Relentless 32C (back to Yardley Utah and 8543U) and Man Amongst Boys for the clubby buyers and topped off being AI'd on 6/28/19 to none other than W/C Fort Knox. She was pasture exposed with H2OS Fully Loaded. Vet called her safe to AI on 7/31. We will remove the risk out of buying this girl by offering a full price refund (minus commission) for her and her live calf if the DNA test proves negative to W/C Fort Knox.



**A.I. Sire: W/C Fort Knox 609F on 6-28-19 • Safe • Due: 4-6-20**

Est. Plan Mating EPDs: 11 1.85 72 103 .20 5 20 56 14 12.8

Carcass #: 24.15 -.44 .20 -.08 .97 118 71

W/C Fort Knox 609F  
 A.I. Sire



40

**RGH Adele's Fawn 800F**

ASA#3595424 **Dbl Polled Black Purebred** Tattoo: 800F  
BD: 1-6-18 Adj. BW: 66 Adj. WW: N/A

CE	BW	WW	YW	ADG	MCE	Milk	MWW	Stay	DOC	CW	YG	Marb	BF	REA	API	TI
12	.4	61	83	.14	6	23	53	18	12.1	22.7	-.33	.30	-.069	.66	142	73

- CCR Cowboy Cut 5048Z
- CCR Anchor 9071B
- CCR Ms. Barb 2120Z
- SS Ebony's Grandmaster
- LAH Adele 610D
- LAH Miss Adele 206Z

**Hoffman Farms** • 800F is a moderate frame easy maintenance female that is attractive to look at. Lotta body with a ton of look in this brood cow prospect which is what you would expect stemming from the 770P cow family from Horstman's. She sells bred safe to the calving ease, Homo Polled, Homo Black RFG/K-LER Elevation 727E bull with sexed heifer semen.

A.I. Sire: RFG/K-LER Elevation 727E on 4-4-19 • Sexed Heifer • Safe • Due: 1-11-20  
Est. Plan Mating EPDs: 12 .5 67 98 .20 7 24 57 19 8.4  
Carcass #: 19.8 -.39 .20 -.08 .71 141 75  
Pasture Sire: AKRG Flash 701E from 5-9 to 8-1-19



RFG/K-LER Elevation 727E  
A.I. Sire

41

**Harkers Falling Star F106**

ASA#3441342 **Dbl Polled Black 5/8 SM 3/8 AN** Tattoo: F106  
BD: 1-13-18 Adj. BW: 69 Adj. WW: 686

CE	BW	WW	YW	ADG	MCE	Milk	MWW	Stay	DOC	CW	YG	Marb	BF	REA	API	TI
13	-2.0	66	100	.22	7	30	63	12	11.1	22.1	-.23	.23	-.047	.52	124	74

- W/C United 956Y
- W/C Executive Order 8543B
- Miss Werning KP 8543U
- SP The Answer 813
- CWT Bobbi Z031
- Peggy Sue 24S

**Harker Simmentals** • This low percent, high volume brood cow in the making is one of our favorites. She is sired by the calving ease specialist, Executive Order, and traces back to one of our favorite donor cows of all time, ET Miss Power Drive 61M. This front pasture kind will have an excellent future and will be a mainstay in any herd.

A.I. Sire: SFG The Judge D633 on 4-24-19 • Due: 1-31-20  
Est. Plan Mating EPDs: 12 -.35 77 116 .25 7 26 65 15 15.95  
Carcass #: 35.4 -.26 .25 -.07 .64 131 78  
Pasture Sire: Harkers Jackson F212 from 5-30 to 8-21-19



SFG The Judge D633  
A.I. Sire

42

**RGH Finnley 805F**

ASA#3595423 **Homo Polled Homo Black Blaze Purebred**  
Tattoo: 805F BD: 1-28-18 Adj. BW: 83 Adj. WW: N/A

CE	BW	WW	YW	ADG	MCE	Milk	MWW	Stay	DOC	CW	YG	Marb	BF	REA	API	TI
7	3.6	73	103	.19	4	20	56	17	7.4	28.8	-.40	.07	-.087	.80	121	70

- CCR Cowboy Cut 5048Z
- TJ Northward 573C
- TJ 59X
- Yardley Utah Y361
- Swain Lucy 524C
- Swain Queen Elizabeth 307A

**Hoffman Farms** • 805F is a brood cow prospect sired by the high growth TJ Northward and out of a Yardley Utah daughter we purchased from the Swain family. This striking blazed face female will be an asset to anyone's program. She sells AI bred safe to Elevation with sexed heifer semen. He is also a Homo Black and Homo Polled calving ease bull that will make her calf Homo Polled and Homo Black for added value.

A.I. Sire: RFG/K-LER Elevation 727E on 4-6-19 • Sexed Heifer • Safe • Due: 1-13-20  
Est. Plan Mating EPDs: 10 2.1 74 108 .22 5 22 59 18 6.05  
Carcass #: 22.85 -.43 .09 -.09 .78 131 74  
Pasture Sire: AKRG Flash 701E from 5-9 to 8-1-19



RFG/K-LER Elevation 727E  
A.I. Sire

43

**Besh Ms. Soda F59**

ASA#3431992 **Dbl Polled Black Baldy Purebred** Tattoo: F59  
BD: 1-8-18 Adj. BW: 96 ET Adj. WW: N/A

CE	BW	WW	YW	ADG	MCE	Milk	MWW	Stay	DOC	CW	YG	Marb	BF	REA	API	TI
10	2.3	78	123	.28	4	19	58	16	14.1	41.6	-.47	-.15	-.121	.94	118	71

- Jass/JS Optimizer 58X
- HPF Optimizer A512
- HPF Rachels Dream X590
- LLSF Uprising Z925
- HPF Cream Soda B334
- IC Cream Soda R56

**H2O's Farm** • This highly sought-after pedigree ET baldy is a larger framed animal that carries herself quite nicely. Imagine what her W/C Double Down 5014E calf will be like the beginning of February 2020 as she was called safe to the May 2, 2019 AI date on 7/31 by our vet.

A.I. Sire: W/C Double Down 5014E on 5-2-19 • Safe • Due: 2-8-20  
Est. Plan Mating EPDs: 12 1.15 75 113 .24 5 22 59 14 13.2  
Carcass #: 29.05 -.50 -.05 -.10 1.02 120 73



HPF Cream Soda B334, Dam  
W/C Double Down 5014E, A.I. Sire



44

### Harkers Flo Jo F118

ASA#3441465 Dbl Polled Black Purebred  
Tattoo: F118 BD: 1-27-18 Adj. BW: 79 Adj. WW: 560

CE	BW	WW	YW	ADG	MCE	Milk	MWW	Stay	DOC	CW	YG	Marb	BF	REA	API	TI
8	1.9	69	101	.20	4	21	55	15	8.8	22.4	-.40	.07	-.079	.80	118	70



Mr. TR Hammer 308A ET  
TKCC Classified  
Ford RJ Dolly Y83  
W/C No Remorse 763Y  
JR Reflection  
JR Jane Fonda

**Harker Simmentals** · Here is a moderate framed, very complete Classified daughter. She is backed by a terrific uddered No Remorse cow. She will be an excellent producer in the future.



SS Goldmine L42  
A.I. Sire

**A.I. Sire: SS Goldmine L42 on 4-28-19 • Due: 2-4-20**  
Est. Plan Mating EPDs:  
10 .85 60 78 .12 4 23 53 16 10.35  
Carcass #s:  
4.45 -.52 -.07 -.12 .61 114 62  
Pasture Sire: Harkers Jackson F212 from  
5-30 to 8-21-19

45

### H2Os Miss Love Ordered F308

ASA#3443457 Dbl Polled Red Purebred Tattoo: F308  
BD: 1-27-18 Adj. BW: ET Adj. WW: N/A

CE	BW	WW	YW	ADG	MCE	Milk	MWW	Stay	DOC	CW	YG	Marb	BF	REA	API	TI
13	.0	75	115	.24	7	26	64	13	8.1	31.6	-.38	.11	-.092	.75	131	79



W/C United 956Y  
W/C Executive Order 8543B  
Miss Werning KP 8543U  
JF Milestone 999W  
HPF Lotsa Love B422  
RP/MP Right To Love 015U

**H2O's Farm** · This red heifer is all that and a bit more. She is sired by Executive Order and her dam HPF Lotsa Love B422 comes directly from the Hudson Pines legacy as we were fortunate to obtain these embryos during their dispersal sale. To even sweeten the pot a bit more, I am pleased to announce she is bred to W/C Bullseye 3046A per our vet. She was pasture exposed to H2OS Fully Loaded.

W/C Bullseye 3046A  
A.I. Sire



**A.I. Sire: W/C Bullseye 3046A on 5-10-19 • Safe • Due: 2-16-20**  
Est. Plan Mating EPDs: 14 -1.45 66 100 .22 6 25 57 17 11.55  
Carcass #s: 24.35 -.49 .05 -.10 .96 136 74  
Pasture Sire: H2Os Fully Loaded from 5-13 to 6-16-19

46

### H2Os Miss By-Line F422

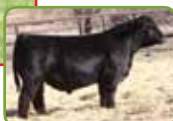
ASA#3443456 Polled Black Baldy Purebred Tattoo: F422  
BD: 1-26-18 Adj. BW: ET Adj. WW: N/A

CE	BW	WW	YW	ADG	MCE	Milk	MWW	Stay	DOC	CW	YG	Marb	BF	REA	API	TI
10	2.2	63	86	.14	6	18	49	15	4.2	20.9	-.40	.05	-.099	.62	118	65



**H2O's Farm** · This ET lady will catch your eye EVERYTIME with her striking bald-face, goggled eyes that has been one of our farm favorites since day 1. She is moderate and super complete plus she is AI'D to W/C Double Down 5014E on April 27, 2019 with no bull exposure. Can't wait to see this mating as we are absolutely thrilled with our 2019 Double Down calves.

W/C Double Down 5014E  
A.I. Sire



**A.I. Sire: W/C Double Down 5014E on 4-27-19 • Safe • Due: 2-3-20**  
Est. Plan Mating EPDs: 12 1.1 67 94 .17 6 21 55 13 8.25  
Carcass #s: 18.7 -.47 .06 -.09 .86 120 70

46A

### F218

ASA#(3443461) Polled Black Purebred Tattoo: F218  
BD: 1-25-18 Adj. BW: ET Adj. WW: N/A

CE	BW	WW	YW	ADG	MCE	Milk	MWW	Stay	DOC	CW	YG	Marb	BF	REA	API	TI
10	2.2	63	86	.14	6	18	49	15	4.2	20.9	-.40	.05	-.099	.62	118	65

**Pedigree for Lots 46 & 46A:**  
TL Bottomline WS Pilgrim H182U  
Miss Star Above  
WAGR Lullaby 703T CNS Dream On L186  
3C Melody M668 BZ

**H2O's Farm** · Full sib to lot 46 and the genetic package that will get your attention. Pasture bred to our new exciting H2OS Fully Loaded bull which was displayed at the NAILLE last year. Vet called her safe at 75 days on 7/31/19.

**Pasture Sire: H2Os Fully Loaded from 5-13 to 6-16-19 • Due 2-24-20**  
Est. Plan Mating EPDs: 10 2.35 62 88 .16 6 20 51 17 6.05  
Carcass #s: 24.25 -.44 -.02 -.11 .74 106 59



47

### Besh Ms. Kenya F23

ASA#3601402 Dbl Polled Black Purebred Tattoo: F23  
BD: 2-1-18 Adj. BW: 78 ET Adj. WW: N/A

CE	BW	WW	YW	ADG	MCE	Milk	MWW	Stay	DOC	CW	YG	Marb	BF	REA	API	TI
7	2.6	56	82	.16	5	18	46	14	5.0	14.8	-.46	-.02	-.128	.54	106	59

- PPSR Montana Irish 107D
- STF Montana Black KF25
- STF Desa Rae
- CNS Dream On L186
- Louken Kenya 510PP
- NJC Kenna

**Beshears Simmentals** - If your cattle need to be stout than you need F23. She is a truck, big hipped, big boned, big footed. You get the picture. She is out of our late Kenya donor. A full sister to F23 was Supreme Female at the Kentucky State fair. She is bred up early with sexed heifer semen.

A.I. Sire: Tehama Tahoe B767 on 4-10-19 • Sexed Heifer • Safe • Due: 1-17-20  
Est. Plan Mating EPDs:  
14 .05 66 102 .23 7 22 55 14 9.15  
Carcass #: 32.4 -.18 .43 -.04 .57 136 75

Tehama Tahoe B767  
A.I. Sire



Louken Kenya 510PP  
Dam



48

### RGH Channelle 816F

ASA#3604359 Dbl Polled Black 3/4 SM 1/4 AN Tattoo: 816F  
BD: 2-6-18 Adj. BW: 86 ET Adj. WW: N/A

CE	BW	WW	YW	ADG	MCE	Milk	MWW	Stay	DOC	CW	YG	Marb	BF	REA	API	TI
8	2.0	55	79	.15	4	22	49	15	5.0	10.6	-.28	.08	-.070	.38	102	57

- WS Pilgrim H182U
- Profit
- WAGR Panarama 204Z
- Silveiras Style 9303
- M2C Channelle 577C
- Miss CCF Sheza Babe U2

**Hoffman Farms** - 816F is a daughter of our Silveiras Style 9303 SimAngus™ donor cow Channelle. Her sire, Profit, has created quite the stir across the country in the show rings. 816F is a smooth made, really extended, angular fronted female. She sells bred safe AI to the calving ease, Homo black, Homo polled RFG/K-LER Elevation 727E with sexed heifer semen.

A.I. Sire: RFG/K-LER Elevation 727E on 4-3-19 • Sexed Heifer • Safe • Due: 1-10-20  
Est. Plan Mating EPDs: 10 1.3 65 96 .20 5 23 55 17 4.85  
Carcass #: 13.75 -.37 .09 -.08 .57 127 69  
Pasture Sire: AKRG Flash 701E from 5-9 to 8-1-19

M2C Channelle 577C, Dam



49

### HF Gabby's EO 716F

ASA#3484813 Polled Black Purebred Tattoo: 716F  
BD: 2-13-18 Adj. BW: 77 Adj. WW: N/A

CE	BW	WW	YW	ADG	MCE	Milk	MWW	Stay	DOC	CW	YG	Marb	BF	REA	API	TI
12	-.4	65	100	.21	6	26	59	12	10.6	23.1	-.41	.06	-.100	.67	123	72

- W/C United 956Y
- W/C Executive Order 8543B
- Miss Werning KP 8543U
- STF Knockout
- Gabby 716T
- R&R Miss Desperado J716

**Hobbs Farms** - Here's an Executive Order daughter that is powerfully made, big foot, big bellied and ready to work for you.

Koch Big Timber 685D  
A.I. Sire



A.I. Sire: Koch Big Timber 685D on 4-12-19 • Safe • Due 1-19-20  
Est. Plan Mating EPDs: 15 -1.95 67 100 .21 9 27 60 17 11.25  
Carcass #: 25.65 -.35 .19 -.08 .68 144 78



50

### Harkers Frederica F132

ASA#3469345 Homo Polled Black 1/2 SM 1/2 AN Tattoo: F132  
BD: 2-13-18 Adj. BW: 68 Adj. WW: 579

CE	BW	WW	YW	ADG	MCE	Milk	MWW	Stay	DOC	CW	YG	Marb	BF	REA	API	TI
5	1.4	66	107	.26	1	25	58	14	12.0	38.0	-.13	.31	-.036	.50	117	70

- WS Stepping Stone B44
- WS Jackson D20
- WS Ms. Built Right Y41
- G 13 Stand Out
- Burks 8072 Imogene 524Y
- CRCC Imogene 8072

**Harker Simmentals** - This excellent Jackson is a daughter of one of our favorite Angus cows, Burks Imogene 524Y. Anytime EXAR Lutton appears in the pedigree, you are guaranteed high quality, eye appealing females. Buy with confidence.

A.I. Sire: SS Goldmine L42 on 5-7-19 • Due: 2-13-20  
Est. Plan Mating EPDs: 8 .6 58 82 .15 3 25 54 16 11.95  
Carcass #: 12.25 -.39 .05 -.10 .46 107 60  
Pasture Sire: Harkers Jackson F212 from 5-30 to 8-21-19



SS Goldmine L42  
A.I. Sire







**51**

**HF Relentless Beauty 77F**

ASA#3484809 **DbI Polled Black Purebred** Tattoo: 77F  
BD: 2-15-18 Adj. BW: 60 Twin Adj. WW: N/A

CE	BW	WW	YW	ADG	MCE	Milk	MWW	Stay	DOC	CW	YG	Marb	BF	REA	API	TI
8	3.2	61	82	.13	3	21	51	15	13.8	8.4	-.43	.03	-.093	.62	112	62

**Yardley Utah Y361**  
**W/C Relentless 32C**  
**Miss Werning KP 8543U**  
**STF Royal Affair Z44M**  
**HF Royal Lady**  
**STF Miss LJ25**

**Hobbs Farms** - This moderate framed Relentless daughter is the complete package. Very feminine with loads of style and ease of movement. We have always really liked this one and look forward to what she accomplishes for her new owner.



SAC Conversation  
A.I. Sire

**A.I. Sire: SAC Conversation on 4-22-19 • Sexed • Due: 1-29-20**  
Est. Plan Mating EPDs: 9 1.2 59 90 .20 4 25 54 12 12.95  
Carcass #s: 17.75 -.22 .33 -.01 .73 116 67



**52**

**HILCO Ms. Foxy 902F**

ASA#3512672 **DbI Polled Hetero Black Purebred** Tattoo: 902F  
BD: 2-15-18 Adj. BW: 74 Adj. WW: 802

CE	BW	WW	YW	ADG	MCE	Milk	MWW	Stay	DOC	CW	YG	Marb	BF	REA	API	TI
10	1.6	65	96	.19	4	22	54	15	10.3	24.9	-.42	-.04	-.104	.69	116	66

**OMF Double Shot Z10**  
**KRMS Primary Candidate**  
**BDK Ms. Better Foundation**  
**CNS Dream On L186**  
**MMF Sheza Foxy Lady W902**  
**SVF Sheza Unforgettable**

**Hoffman Farms & Hill County Cattle Company** • 902F is another big bodied stout made, growthy brood cow prospect. She is sired by the triple crown winning Primary Candidate bull and out of a time tested female that is a full sib in blood to SVF Steel Force. This genetic dispositioned female sells bred safe AI to the calving ease, Homo black, Homo polled RFG/K-LER Elevation 727E with sexed heifer semen



RFG/K-LER Elevation 727E  
A.I. Sire

**A.I. Sire: RFG/K-LER Elevation 727E on 4-3-19 • Sexed Heifer • Safe • Due: 1-10-20**  
Est. Plan Mating EPDs: 11 1.1 70 105 .22 5 23 58 17 7.5  
Carcass #s: 20.9 -.44 .03 -.10 .73 128 71  
Pasture Sire: AKRG Flash 701E from 5-9 to 8-1-19



**53**

**Harkers Fuschia F135**

ASA#3474487 **DbI Polled Black Star 3/4 SM 1/4 AN** Tattoo: F135  
BD: 2-22-18 Adj. BW: 69 Adj. WW: 516

CE	BW	WW	YW	ADG	MCE	Milk	MWW	Stay	DOC	CW	YG	Marb	BF	REA	API	TI
9	.7	53	78	.15	4	19	46	15	10	24.4	-.19	.11	-.056	.34	108	58

**WS Stepping Stone B44**  
**WS Jackson D20**  
**WS Ms. Built Right Y41**  
**WAF Zorzal 321U**  
**Harkers Caliente Kiss**  
**GCF Miss Caliente**

**Harker Simmentals** - This is a moderate, functional and star headed cow in the making. She traces back to the ever popular power cow, Caliente.



SFG The Judge D633  
A.I. Sire

**A.I. Sire: SFG The Judge D633 on 5-15-19 • Due: 2-21-20**  
Est. Plan Mating EPDs: 10 1.0 71 105 .21 6 21 56 17 15.4  
Carcass #s: 36.55 -.24 .19 -.07 .55 134 75  
Pasture Sire: Harkers Jackson F212 from 5-30 to 8-21-19



**54**

**Besh Ms. Ethel F050**

ASA#(3465984) **Polled Black Purebred** Tattoo: F050  
BD: 3-18-18 Adj. BW: 83 ET Adj. WW: N/A

CE	BW	WW	YW	ADG	MCE	Milk	MWW	Stay	DOC	CW	YG	Marb	BF	REA	API	TI
8	2.8	61	84	.15	5	17	47	16	8.7	22.2	-.47	-.14	-.12	.67	105	58

**CNS Dream On L186**  
**S&S Sweet Dreams 507C**  
**HPF Ms. Honey R007**  
**Beshears True Man T7**  
**Besh Ethel W24**  
**Beshears New Years Eve**

**Beshears Simmentals** - I mentioned early in this catalog how well I liked our Ethel calves and F050 is no exception, but I think when you throw a shot of HPF Honey in this pedigree it makes even less sense to sale her. I love this heifers neck extension and sound structure. She is bred up early with sexed heifer semen. Buy her take her home and make some money selling show heifers out of her. F050 is halter broke.



Tehama Tahoe B767  
A.I. Sire

**A.I. Sire: Tehama Tahoe B767 on 4-24-19 • Sexed Heifer Safe • Due: 1-31-20**

Besh Ethel W24, Dam



55

**RGH Georgina 832F**

ASA#3604351 Purebred Angus Tattoo: 832F  
BD: 2-28-18 Adj. BW: 80 Adj. WW: N/A

CE	BW	WW	YW	ADG	MCE	Milk	MWW	Stay	DOC	CW	YG	Marb	BF	REA	API	TI
11	1.1	82	135	.33	6	24	65	10	12.9	63.1	.03	.34	.042	.95	101	68

- S A V Brilliance 8077
- PVF Insight 0129
- PVF Missie 790
- Haynes Upward 307R 0128
- LAF Georgina 402
- Champion Hill Georgina 7541

**Hoffman Farms** • Can't miss Angus genetics in this pretty bred heifer here. 832F stems from the great Georgina line and sired by the popular PVF Insight. 832F is easy on the eyes to look at. She has that extended front long bodied soft middle that makes the Angus breed so fun to mate Simmental. She sells bred safe AI to the calving ease, Homo black, Homo polled RFG/K-LER Elevation 727E with sexed heifer semen.



RFG/K-LER Elevation 727E  
A.I. Sire

A.I. Sire: RFG/K-LER Elevation 727E on 4-24-19 • Sexed Heifer • Safe • Due: 1-31-20  
Est. Plan Mating EPDs: 12 .85 78 124 .29 6 24 63 15 8.8  
Carcass #s: 40.0 -.21 .22 -.03 .86 127 76  
Pasture Sire: AKRG Flash 701E from 5-9 to 8-1-19

56

**Besh Ms. Silk F39**

ASA#3601403 Dbl Polled Black Baldy Purebred Tattoo: F39  
BD: 3-6-18 Adj. BW: 70 ET Adj. WW: N/A

CE	BW	WW	YW	ADG	MCE	Milk	MWW	Stay	DOC	CW	YG	Marb	BF	REA	API	TI
14	.8	54	76	.14	6	22	49	17	10.5	17.1	-.44	-.05	-.105	.68	120	60

- TJSC Optimus Prime 12W
- STF Lock Out Z44L
- STF Onyx 451W
- CNS Dream On L186
- SOSF Ebony Black Silk
- SOSF Ebony Joy L-123

**Beshears Simmentals** • We culled our females pretty hard last year and have a really nice set of replacements this year and F39 was meant to be one of them. I really like this female. She is long spined, fancy fronted, and stout. Combining Silk and Onyx in a pedigree sure makes the package more appealing as well. Bred up early to sexed heifer semen. F39 is halter broke.



Tehama Tahoe B767  
A.I. Sire

A.I. Sire: Tehama Tahoe B767 on 4-24-19 • Sexed Heifer • Safe • Due: 1-31-20  
Est. Plan Mating EPDs: 17 -.85 65 99 .22 7 24 56 16 11.9  
Carcass #s: 33.55 -.17 .41 -.03 .64 143 76

57

**NIC Miss Violet 863 863F**

ASA#3443734 Polled Black 1/2 SM 7/16 SS 1/16 MA Tattoo: 863F  
BD: 3-20-18 Adj. BW: N/A Adj. WW: N/A

CE	BW	WW	YW	ADG	MCE	Milk	MWW	Stay	DOC	CW	YG	Marb	BF	REA	API	TI
8	2.5	63	94	.19	5	20	68	15	7.0	3.0	-.37	-.13	-.105	.27	95	57

- FBFS Wheel Man 649W
- HOC Brazos B117
- CCR Ms. Misty May 8014U
- 4210

**Nichols Cattle Company** • This one is out of Kayla's Valentine's day present from a few years ago, a shorthorn cow named "Violet." Her momma has made some great prospects for us over the years and I wanted to try something different and breed her to a really cool Simmental bull owned by our great friend Randy Daniel in Ga. 863 is one that I feel the opportunities are endless when it comes to mating for that next show calf prospect.



Pasture Sire: NIC United F02 from 5-14 to 7-20-19 • Due: 4-16-20

58

**NIC Miss Transformer 864 864F**

ASA#3443735 Dbl Polled Black 1/2 SM 1/2 AN Tattoo: 864F  
BD: 4-2-18 Adj. BW: N/A Adj. WW: N/A

CE	BW	WW	YW	ADG	MCE	Milk	MWW	Stay	DOC	CW	YG	Marb	BF	REA	API	TI
10	1.0	64	93	.18	7	19	51	11	8.9	24.0	-.24	.27	-.043	.60	113	68

- Mr. NLC Upgrade U8676
- Partisover Upgrade 443A
- Partisover Witch 7120
- Partisover Transformer
- Georgia Miss Meyer 10Z
- RSE Miss Georgia 12W

**Nichols Cattle Company** • This one didn't let one little wire tell her where to go on picture day, so we got what I think is one of my favorite photos. I love this ones build and think she has all the right pieces to last a long time in your program.



Pasture Sire: NIC United F02 from 5-14 to 7-20-19 • Due: 3-7-20



**59**

## Harkers Flicka F156

ASA#3441352 Polled Black Purebred  
Tattoo: F156 BD: 4-2-19 Adj. BW: 77 Adj. WW: 623

CE	BW	WW	YW	ADG	MCE	Milk	MWW	Stay	DOC	CW	YG	Marb	BF	REA	API	TI
9	1.9	77	124	.29	5	28	67	12	10.8	33.9	-.40	.18	-.086	.88	127	79



W/C United 956Y  
W/C Executive Order 8543B  
Miss Werning KP 8543U  
LRS Turning Point 3117A  
Harkers Winter Foxy Gal  
Harkers Winter Charm

**Harker Simmentals** - Moderate, sow bellied and extremely functional are three traits to describe this female. Her mother is an excellent Turning Point female that goes back to the Snowflake female that was Supreme Champion Female at the Indiana State Fair for Aleesa Dickerson.



SFG The Judge D633, A.I. Sire

Viewing & Bidding Available Online!  
**LiveAuctions.TV**

A.I. Sire: SFG The Judge G633 on 4-6-19 • Due:1-13-20  
Est. Plan Mating EPDs: 10 1.6 83 128 .28 6 25 66 16 15.8  
Carcass #: 41.3 -.35 .22 -.09 .82 138 83  
Pasture Sire: Harkers Jackson F212 from 5-30 to 8-21-19

**60**

## RGH Finesse 809F

ASA#3423643 Dbl Polled Black Baldy Purebred Tattoo: 809F  
BD: 3-3-18 Adj. BW: 86 Adj. WW: N/A

CE	BW	WW	YW	ADG	MCE	Milk	MWW	Stay	DOC	CW	YG	Marb	BF	REA	API	TI
12	.2	70	107	.23	7	27	62	20	10.9	32.6	-.51	.09	-.106	1.06	143	75



MCM Top Grade 018X  
Hook's Bounty 6B  
Hook's Yuma 49Y  
W/C Bullseye 3046A  
SWC TGS Day To Dream D10  
JF WS Ebonys Joy 7003T

**Hoffman Farms** - Donor cow in the making. Finesse comes from a royal pedigree with the perfect blend of calving ease and maternal along with power, growth, and carcass. Finesse is a beautiful baldy female straight out of the keeper pen. She is a moderate framed, free moving female with loads of body and center mass. We are committed to bringing this type of female and are proud to be a part of the Field of Dreams Sale. Finesse is sired by the popular Hooks Bounty and stems from the immortal Ebonys Joy L123 on the bottom side. She sells Safe Al'ed to sexed HILB Oracle semen. Her heifer calf should be an exciting one to watch



HILB Oracle C033R  
A.I. Sire

A.I. Sire: HILB Oracle C033R on 4-4-19 • Sexed • Safe • Due: 1-11-20  
Est. Plan Mating EPDs: 12 .65 67 98 .19 6 26 59 18 14.15  
Carcass #: 22.4 -.58 .04 -.13 .93 130 71  
Pasture Sire: AKRG Flash 701E from 5-9 to 8-1-19

**61**

## HF Cool Ella 5F

ASA#3484807 Dbl Polled Red Purebred Tattoo: 5F  
BD: 6-5-18 Adj. BW: 83 Adj. WW: N/A

CE	BW	WW	YW	ADG	MCE	Milk	MWW	Stay	DOC	CW	YG	Marb	BF	REA	API	TI
7	3.3	67	99	.20	3	18	51	12	11.0	23.8	-.35	.06	-.098	.52	109	66



LLSF Pays To Believe ZU194  
GLS/JRB Cool 154C  
HS Lookin Sweet Z161S  
STF Dominance T171  
HF Ella  
Miss Knockout 74T

**Hobbs Farms** - This solid red heifer goes back the great 74T cow. She is well balanced, clean fronted and moves like one should. Ultra sound safe in calf to Big Timber a calving ease specialist.

A.I. Sire: Koch Big Timber 685D on 4-22-19 • Safe • Due:1-29-20  
Est. Plan Mating EPDs: 13 -.1 68 100 .20 8 23 57 17 11.45  
Carcass #: 26.0 -.32 .19 -.08 .60 138 75



Miss Knockout 74T  
Grandam



Koch Big Timber 685D, A.I. Sire



**62**

## HPF/CLO Dandy 298E

ASA#3268811 Polled Black Purebred Tattoo: 298E  
BD: 3-2-17 Adj. BW: 82 ET Adj. WW: N/A

CE	BW	WW	YW	ADG	MCE	Milk	MWW	Stay	DOC	CW	YG	Marb	BF	REA	API	TI
9	2.3	74	109	.22	5	17	54	16	10.6	24.4	-.52	-.06	-.119	.88	118	70

Mr. TR Hammer 308A ET

**H2O's Farm** • We have done our best to bring exceptional animals to create a good first impression with the Field Of Dreams team and it is quite apparent with this Classified x Sheza Dandy young lady that is AI bred on 6/14/2019 to the highly talked about (with good reason) W/C Fort Knox. There won't be many of these Fort Knox breeds offered this year so you may want to make sure you are on the winning side when the hammer drops!

TKCC Classified

Ford RJ Dolly Y83

CNS Dream On L186

Lazy H Sheza Dandi T46

JBH Sheza Dandy



W/C Fort Knox 609F  
A.I. Sire



Viewing & Bidding Available Online!

**LiveAuctions.TV**

A.I. Sire: W/C Fort Knox 609F on 6-14-19 • Due: 3-23-20

Est. Plan Mating EPDs: 11 1.3 77 115 .24 5 20 58 16 11.45

Carcass #: 29.85 -.48 .11 -.09 1.02 131 77

**63**

## Harkers Commercial F101

Commercial Purebred Angus Tattoo: F101  
BD: 1-15-18 Adj. BW: 80 Adj. WW: N/A

**Harker Simmentals** • This unregistered purebred Angus female is very complete. Her sire, Panther Creek Incredible, was a high seller to Krebs Ranch and has a great job of siring low birth weight, high growth cattle. This female will make an excellent cow with longevity too.

Pasture Sire: Harkers Jackson F212 from 5-30 to 8-21-19 • Obs.: 6-10-19 • Due: 3-19-20



**64**

## 867

Unregistered Sim-Solution Tattoo: 867  
BD: 2018 Adj. BW: N/A Adj. WW: N/A

**Nichols Cattle Company** • If you have ever been thru our cow herd than you have seen our Baldy Donor "155". We feel that, phenotypically, she is a good as an animal to walk our pastures. This 867 heifer is a tick younger than some of her contemporaries but has the potential to make a big time impact. She is able to be registered 1/2 SimAngus™ and will be happy to do so upon the request of the new owner.

Pasture Sire: NIC United F02 from 5-14 to 7-20-19 • Due: 3-6-20



**65**

## 870

Unregistered Sim-Solution Tattoo: 870  
BD: 2018 Adj. BW: N/A Adj. WW: N/A

**Nichols Cattle Company** • This American Dream daughter has been a bit of a late bloomer, but man is she coming on strong. She earned a spot in our sale line-up before we got the paperwork on her finished. She is able to be registered Sim-Solution and we would be happy to for the new owners.

Pasture Sire: NIC United F02 from 5-14 to 7-20-19 • Due: 4-25-20





# Congratulations to all our Winners!



## Harkers Fountain of Joy

Purchased by Felt Farms, Nebraska • Shown by Luke Harker  
2018 NAILE Reserve Purebred Calf Division I  
Champion Purebred Bred & Owned Calf Division  
2019 Eastern Regionals 6th overall Purebred Bred & Owned



## BESH Ms Soda F27

Shown by Olivia Kuhn  
2018 Class Winner NAILE and many time champion!



## BESH Ms Silk F739

Congratulations Colt Thomas!  
Champion Simmental Appalachian Fair



## Heges Forever Lady 115

Shown by the Denpsey Family  
2019 Reserve Champion Bartholemew County 4-H Fair



*Juniors! Plan now for next summer!  
Purchase your next winner at the  
2019 Field of Dreams Sale on October 6th!*

**2020 Junior National Simmental  
Classic in Grand Island, NE  
Event will be held at the  
Nebraska State Fairgrounds  
July 5-11, 2020**





**We appreciate all our bidders & buyers and look forward to seeing you on October 6th!**

SUNDAY, OCTOBER 6TH AT 12:00 PM SHARP



# 2019 FIELD OF DREAMS

Sunday 10/6/19 • Harker Sale Facility • Hope, Indiana • 12:00 Noon



Please join us  
**OCTOBER 6TH**  
in Hope, IN!  
Selling 65 Lots!

Viewing & Bidding Available Online!  
**LiveAuctionsTV**

## Elite Simmental & SimAngus Genetics

*Eberspacher*  
ENTERPRISES INC.

2904 Co Rd 6, Marshall, MN 56258

First Class Mail: Time Dated Material!

Presorted  
First Class  
US Postage  
**PAID**  
SlateGroup