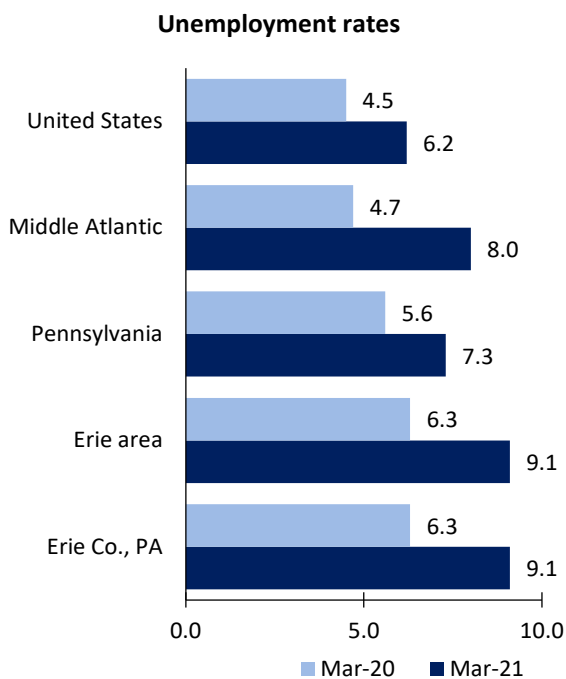


# Erie area Economic Summary

Updated May 03, 2021

This summary presents a sampling of economic information for the area; supplemental data are provided for regions and the nation. Subjects include **unemployment, employment, wages, prices, spending, and benefits**. All data are not seasonally adjusted and some may be subject to revision. Area definitions may differ by subject. For more area summaries and geographic definitions, see [www.bls.gov/regions/economic-summaries.htm](http://www.bls.gov/regions/economic-summaries.htm).

## Unemployment rates for the nation and selected areas

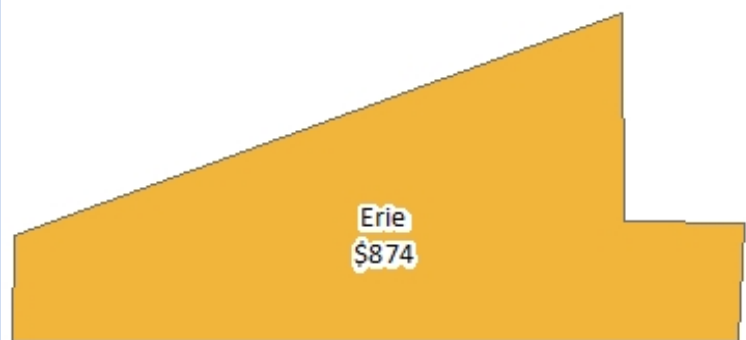


Source: U.S. BLS, Local Area Unemployment Statistics.

## Average weekly wages for all industries by county

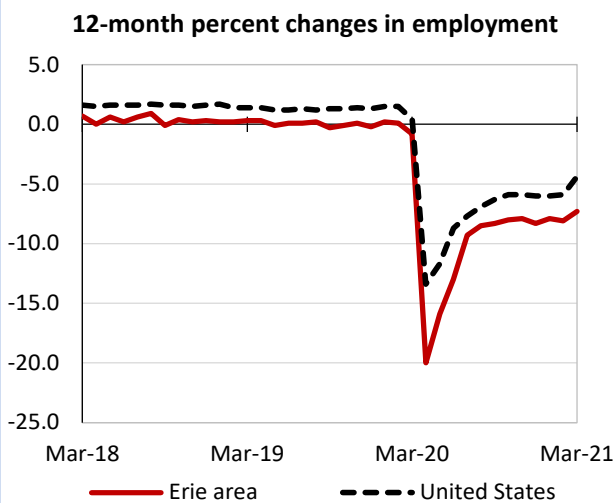
Erie area, third quarter 2020

(U.S. = \$1,173; Area = \$874)



Source: U.S. BLS, Quarterly Census of Employment and Wages.

## Over-the-year changes in employment on nonfarm payrolls and employment by major industry sector



Source: U.S. BLS, Current Employment Statistics.

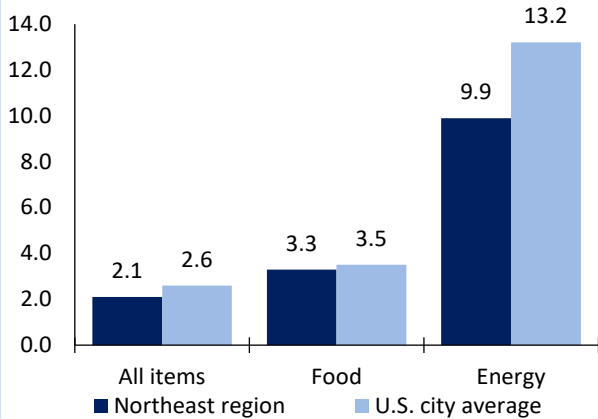
Erie area employment (number in thousands)	Mar. 2021	Change from Mar. 2020 to Mar. 2021	
		Number	Percent
Total nonfarm	117.2	-9.2	-7.3
Mining, logging, and construction	3.8	0.0	0.0
Manufacturing	18.1	-1.1	-5.7
Trade, transportation, and utilities	20.0	-0.4	-2.0
Information	0.8	-0.1	-11.1
Financial activities	6.6	0.0	0.0
Professional and business services	9.0	-0.8	-8.2
Education and health services	28.8	-1.8	-5.9
Leisure and hospitality	10.2	-2.8	-21.5
Other services	5.0	-0.8	-13.8
Government	14.9	-1.4	-8.6

Source: U.S. BLS, Current Employment Statistics.



Over-the-year change in the prices paid by urban consumers for selected categories

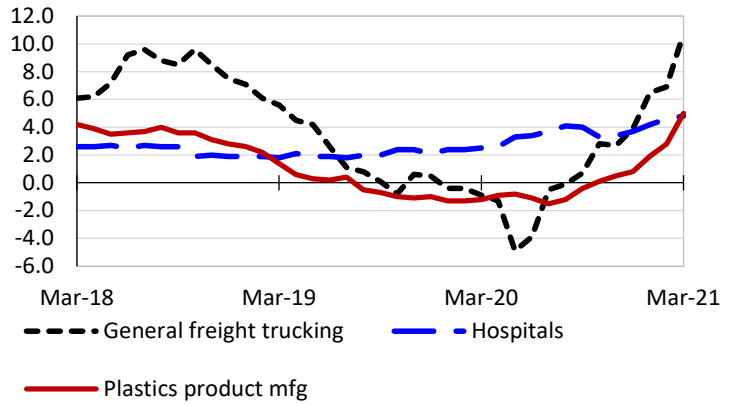
12-month percent change in CPI-U, March 2021



Source: U.S. BLS, Consumer Price Index.

Over-the-year changes in the selling prices received by producers for selected industries nationwide

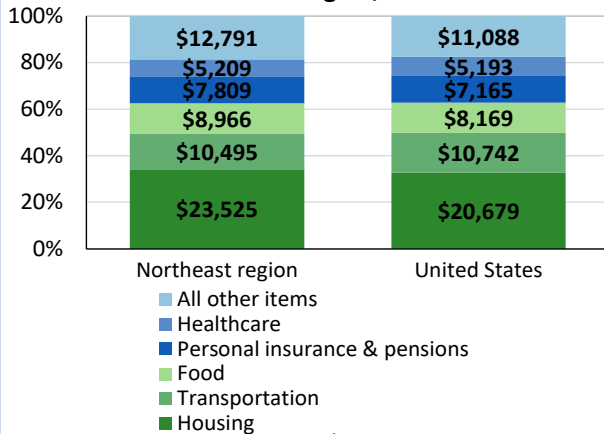
12-month percent changes in PPI



Source: U.S. BLS, Producer Price Index.

Average annual spending and percent distribution for selected categories

Average annual expenditures, United States and Northeast region, 2019



Source: U.S. BLS, Consumer Expenditure Survey.

Average hourly wages for selected occupations

Occupation	Erie area	United States
All occupations	\$21.65	\$27.07
Accountants and auditors	30.27	39.26
Bus and truck mechanics and diesel engine specialists	23.12	25.04
Construction laborers	21.05	20.67
Machinists	19.47	22.98
Receptionists and information clerks	12.11	15.58

Source: U.S. BLS, Occupational Employment and Wage Statistics, May 2020.

Employer costs per hour worked for wages and selected employee benefits by geographic division

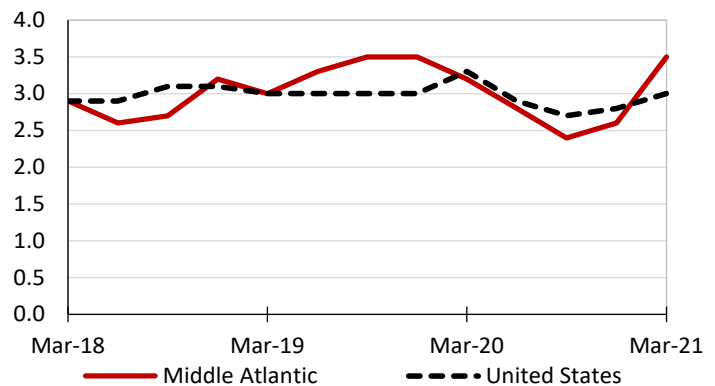
Private industry, December 2020	Middle Atlantic	United States
Total compensation	\$40.61	\$36.23
Wages and salaries	27.77	25.48
Total benefits	12.84	10.74
Paid leave	3.16	2.69
Vacation	1.60	1.38
Supplemental pay	1.55	1.25
Insurance	3.39	2.81
Retirement and savings	1.59	1.25
Legally required benefits	3.15	2.75

(1) The states that compose the Middle Atlantic census division are: NJ, NY, and PA.

Source: U.S. BLS, Employer Costs for Employee Compensation.

Over-the-year changes in wages and salaries

12-month percent changes in ECI



Source: U.S. BLS, Employment Cost Index.

