



Aalborg Universitet

AALBORG UNIVERSITY
DENMARK

Testing the effect of different enzyme blends on increasing the biogas yield of straw and digested manure fibers

Njoku, Stephen Ikechukwu; Jurado, Esperanza; Malmgren-Hansen, Bjørn; Kragelund, Caroline; Ruiz, Begoña; Uellendahl, Hinrich

Publication date:
2014

Document Version
Accepted author manuscript, peer reviewed version

[Link to publication from Aalborg University](#)

Citation for published version (APA):

Njoku, S. I., Jurado, E., Malmgren-Hansen, B., Kragelund, C., Ruiz, B., & Uellendahl, H. (2014). *Testing the effect of different enzyme blends on increasing the biogas yield of straw and digested manure fibers*. Poster presented at Biogas Science 2014, Vienna, Austria.

General rights

Copyright and moral rights for the publications made accessible in the public portal are retained by the authors and/or other copyright owners and it is a condition of accessing publications that users recognise and abide by the legal requirements associated with these rights.

- ? Users may download and print one copy of any publication from the public portal for the purpose of private study or research.
- ? You may not further distribute the material or use it for any profit-making activity or commercial gain
- ? You may freely distribute the URL identifying the publication in the public portal ?

Take down policy

If you believe that this document breaches copyright please contact us at vbn@aub.aau.dk providing details, and we will remove access to the work immediately and investigate your claim.

Testing the effect of different enzyme blends on increasing the biogas yield of straw and digested manure fibers



AALBORG UNIVERSITY
COPENHAGEN



S.I. Njoku¹, E. Jurado¹, B. Malmgren-Hansen², C. Kragelund², B. Ruiz³ and Hinrich Uellendahl^{1*}

¹ Section for Sustainable Biotechnology, Aalborg University Copenhagen, A.C. Meyers Vænge 15, DK-2450 Copenhagen, Denmark

² Danish Technological Institute, Kongsvang Allé 29, DK-8000 Aarhus C, Denmark

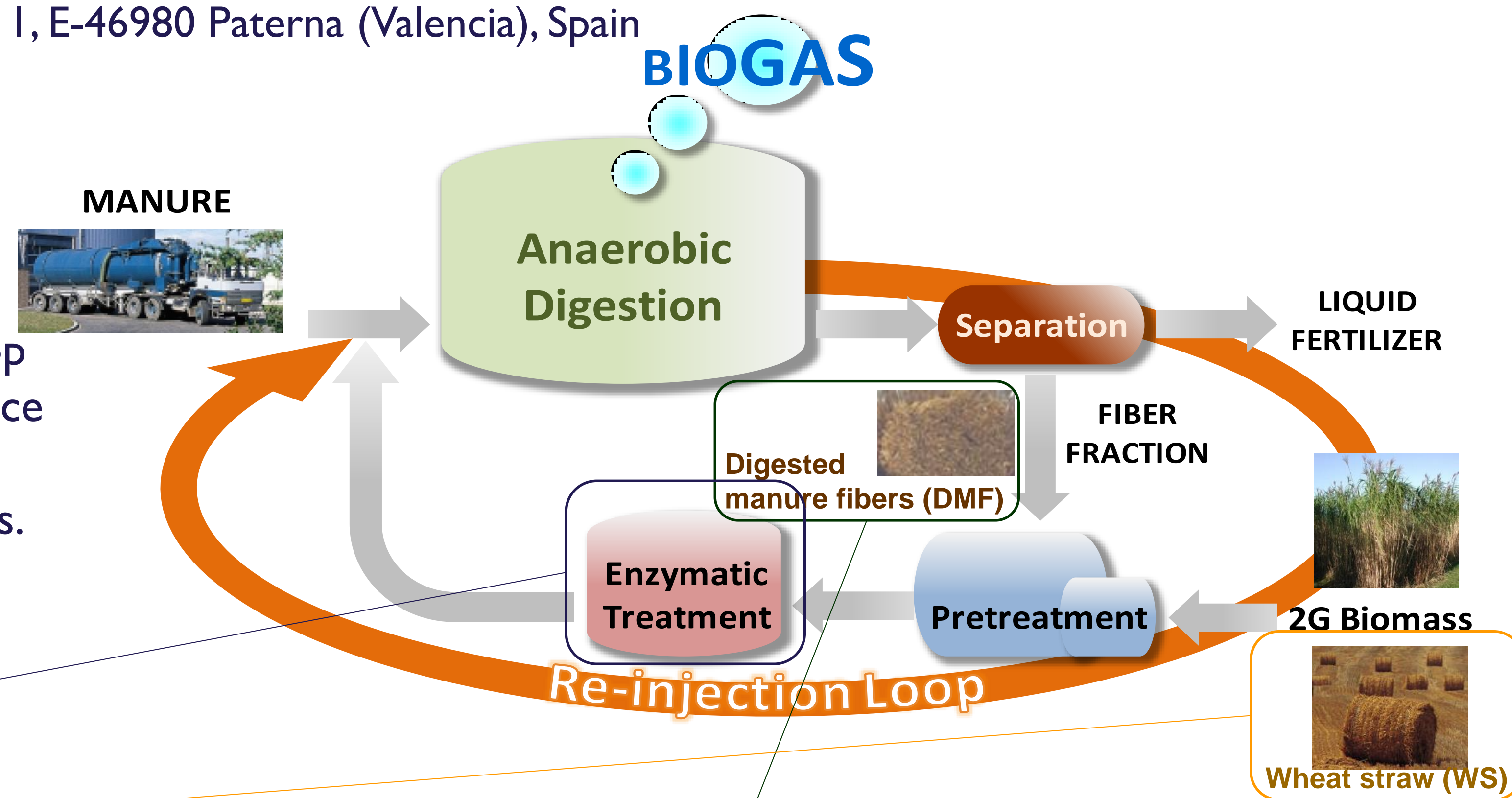
³ ainia centro tecnológico, Parque Tecnológico de Valencia c. Benjamin Franklin 5-1 I, E-46980 Paterna (Valencia), Spain

*Corresponding author, ph +45 9940 2585, E-mail address: hu@bio.aau.dk

The Re-Injection Loop Concept

In this study, enzymatic treatment was tested to increase the biogas yield of wheat straw (WS) and digested manure fibers (DMF) in the Re-Injection Loop Concept, which combines anaerobic digestion with solid separation to enhance the biogas yield per ton of manure by:

1. Digestion of the easily degradable fraction of manure in the biogas process.
2. Separation of the residual recalcitrant digested fiber fraction project.
3. Ultrasound and/or enzymatic treatment of the digested fiber fraction.
4. Recirculation of the treated fiber fraction into the reactor.



Enzymatic Treatment of WS and DMF

- All tests were conducted in batch tests as separate enzymatic hydrolysis prior to the anaerobic digestion (AD) process. The enzymatic hydrolysis (EH) was performed at the following conditions: T = 50°C, τ = 0.5/1.0/72 h, dosage = 0.1/2.5/5.0% g-enzyme/g-TS, 10% TS, pH (adjusted) = pH 5/7, pH (non adjusted) = pH > 8

The following enzyme blends were tested:

Enzyme	Activity	pH range	Temp range (°C)
NZ-P	Protease	8.0-10.0	60-70
ES-C5000P	Neutral cellulase	6.5-8.5	50-70
ES-CX15K	Cellulase and endo-xylanase	2.5-7.0	40-70
NZ-Cat	Catalase	N/D	N/D
NZ-CBG	Cellulase	4.5-6.0	40-55
ES-HC	Endo-xylanase	5.0-8.0	50-80
NZ-CBG1	Cellulase	4.0-6.0	50
ES-C-LA	β -glucanase & endo-cellulase	4.5-6.0	40-50
NZ-X	Xylanase	4.5-6.1	50-70
NZ-BG	β -glucanase	5.0-7.0	50-65
ES-CX900T	Cellulase + xylanase	6.5-8.0	50-70
ES-3000L	Cellulase	4.0-7.0	30-60
ES-8000P	Cellulase	4.5-6.5	50-60

NZ: enzyme blend from Novozymes A/S, ES: enzyme blend from EnzymeSupplies Ltd.

- The subsequent biomethane potential (BMP) tests were performed at 37°C for 60 days. The inoculum used was taken from Hashøj biogas plant, Denmark, treating manure and industrial organic waste.

- Screening of the different enzymes (50°C, pH 5.0, 72h) on WS showed an increasing effect on the BMP mainly for enzyme blends containing both cellulase and xylanase activity:

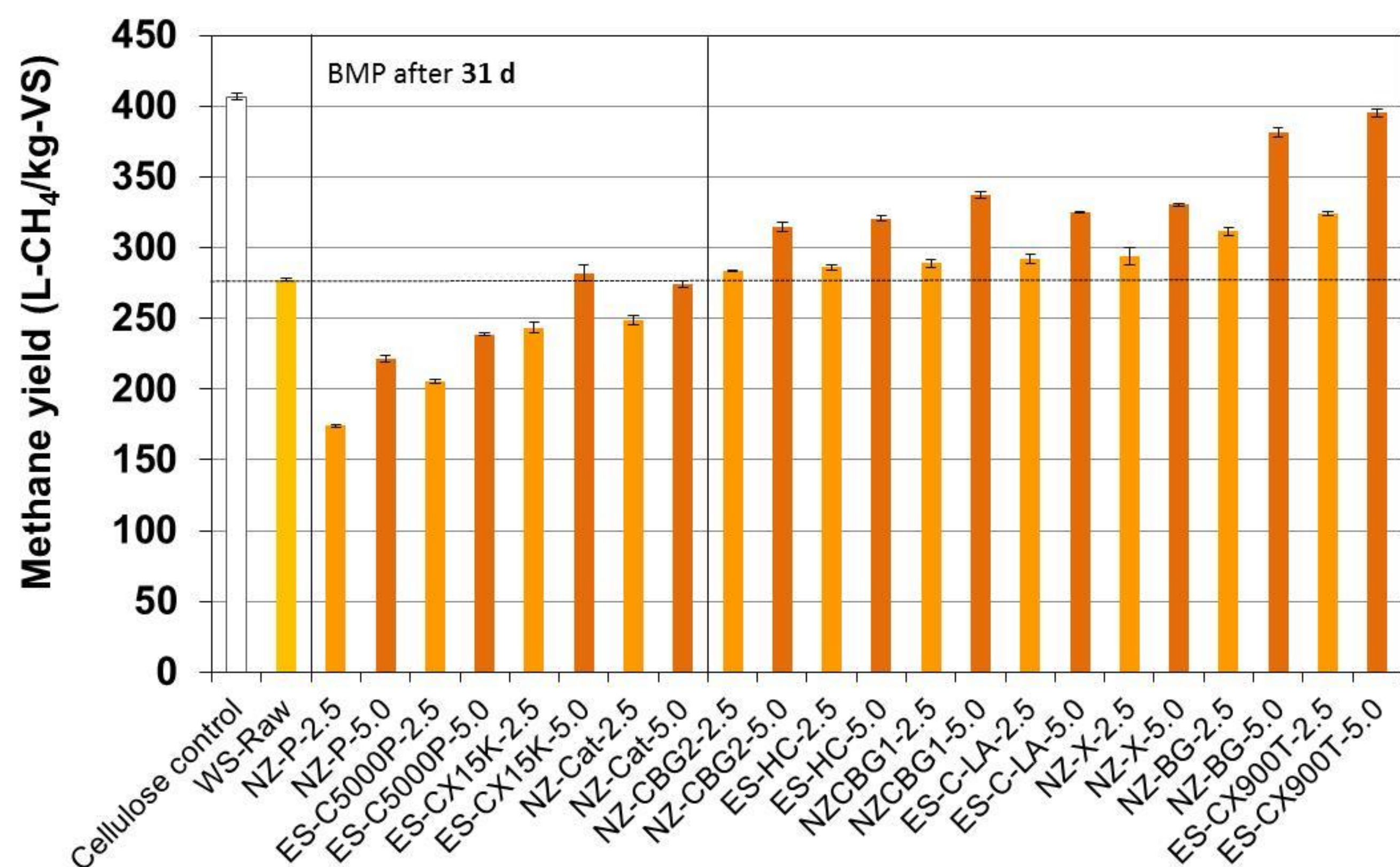


Fig.1 BMP of WS using different enzyme blends in 2.5/5.0% g-enz/g-TS compared to raw WS (—)

- EH (50°C, pH 7.0/5.0, 0.5/72h) using the best performing and low cost enzyme blends (CX900T/3000L) at low dosage (0.1% g-enzyme/g-TS) had an increasing effect mainly on the BMP of DMF, while the effect on WS was only limited:

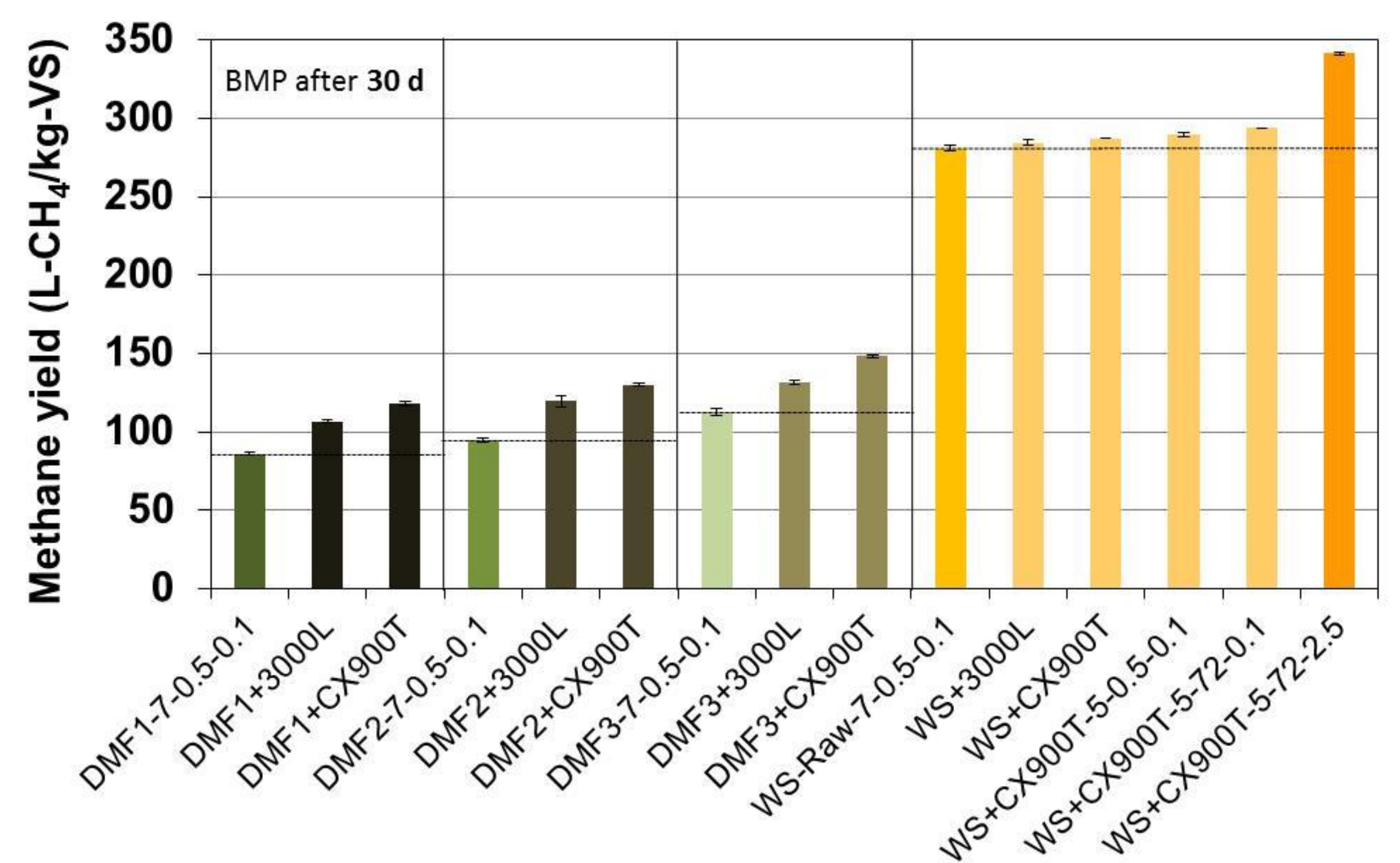


Fig. 2 Effect of enzyme addition on BMP of DMF from 3 different biogas plants (DMF1-3) and of WS

- EH with no pH adjustment (pH > 8) and 0.1% dosage showed an increasing effect of the enzyme addition (8000P) compared to treating DMF at 42/50°C without enzymes only for 72h of EH:

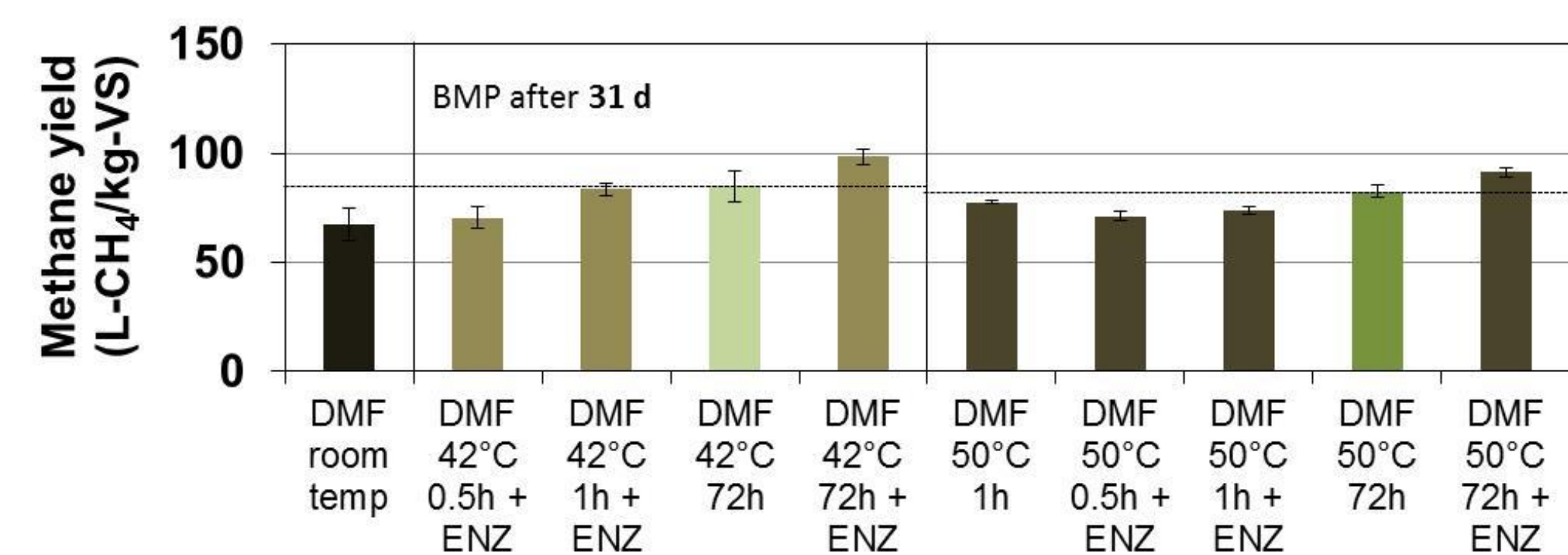


Fig. 3 BMP of DMF after treatment at 42/50°C with and without enzyme addition (for 72h —)

Conclusions

- Addition of combined cellulase and xylanase activity showed highest effect to enhance the intrinsic hydrolytic activity of the AD process
- The relative effect of enzyme addition was higher for DMF with low BMP
- pH adjustment to pH < 7 showed higher effect of the enzyme addition

Acknowledgements

Enzyme blends were supplied by Novozymes A/S, Bagsværd, Denmark, and EnzymeSupplies Ltd, Oxford, UK. The EU project BIOMAN is funded by the European Union's Seventh Framework Programme managed by REA - Research Executive Agency: <http://ec.europa.eu/research/rea> (FP7/2007-2013) under grant agreement no. FP7-SME-2012, 315664, "BIOMAN". www.bioman.dti.dk



DANISH
TECHNOLOGICAL
INSTITUTE

ainia
centro tecnológico



AALBORG UNIVERSITY
DENMARK

enzyme supplies

hielscher
Ultrasound Technology

HTN
biogas

BIGADAN