



# Concept, Feasibility & Mobility Studies

Osceola Parkway Extension

Project Advisory Group  
Meeting No. 2

February 8, 2018

## Concept, Feasibility & Mobility Studies

This meeting, project, or study is being conducted without regard to race, color, national origin, age, sex, religion, disability or family status. Persons wishing to express their concerns relative to compliance by the Central Florida Expressway Authority (CFX) with Title VI may do so by contacting:

Joseph Passiatore  
CFX General Counsel  
4974 ORL Tower Road  
Orlando, FL 32807  
407-690-5000

[Joe.Passiatore@CFXWay.com](mailto:Joe.Passiatore@CFXWay.com)

All inquiries or complaints will be handled according to CFX procedure and in a prompt and courteous manner.

## Concept, Feasibility & Mobility Studies

### AGENDA

- I. Introductions
- II. Study History
- III. Study Corridor Overview
- IV. Project Goals
- V. Study Methodology & Schedule
- VI. Public Involvement
- VII. Study Corridor Updates & Evaluation Matrices
- VIII. Open Discussion
- IX. Next Steps
- X. Action Items

## Concept, Feasibility & Mobility Studies

### Study History

**December 19, 2005:** Osceola County Comprehensive Plan adopted, proposed several new corridors to meet the county's anticipated growth.

**2012:** Osceola County Expressway Authority (OCX) began creating its first long-range expressway plan.

**August 13, 2013:** OCX Master Plan 2040 finalized, defining the county's expressway needs and providing for a program of projects to implement the plan.

**September 8, 2016:** CFX Board approved an interlocal agreement with Osceola County and OCX to transfer the lead for developing the remainder of the OCX 2040 Master Plan to CFX. CFX incorporated the OCX master plan segments into the CFX master plan.

**March 9, 2017:** CFX Board approved consultant contracts to conduct the Concept, Feasibility and Mobility studies.

**April 2017:** CFX commenced four concept, feasibility, and mobility studies to determine if any of the corridors are viable and fundable in accordance with CFX policies and procedures.

## Concept, Feasibility & Mobility Studies

Each of the four corridor segments has been previously studied to varying degrees of detail. Our consultant teams have reviewed and evaluated the previous studies for each corridor segment.

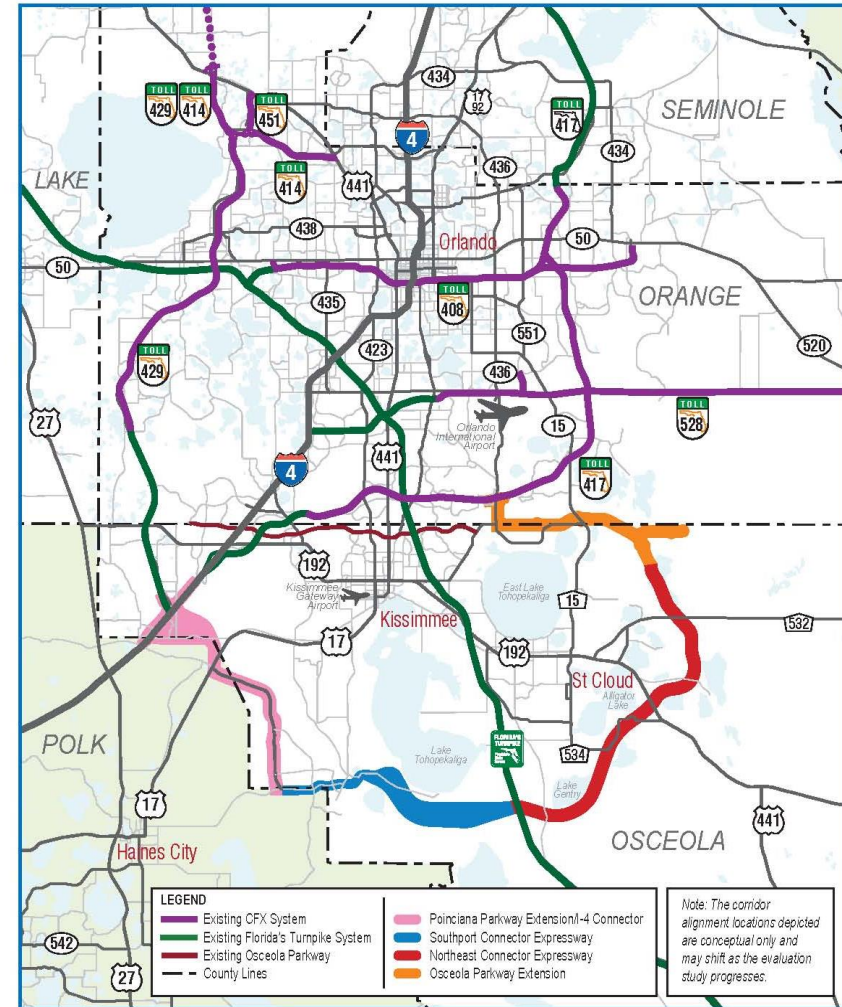
- Poinciana Parkway Extension / I-4 Connector  
*Alternative Corridor Evaluation Report (ACER) - November 2015*
  
- Southport Connector Expressway  
*Alternative Corridor Evaluation Report (ACER) – October 2015*
  
- Northeast Connector Expressway  
(Southport Connector East, from Canoe Creek Road to SR 528)  
*Preliminary Alignment Evaluation – June 2010*
  
- Osceola Parkway Extension  
*Project Development & Environment (PD&E) Study – May 2017*

## Concept, Feasibility & Mobility Studies

### Study Corridor Overview

The four corridors lie within Osceola, Polk, and Orange Counties and encompass approximately 60 miles of primarily new-location highway.

- Poinciana Parkway Extension / I-4 Connector  
*Approximately 13 miles*
- Southport Connector Expressway  
*Approximately 13 miles*
- Northeast Connector Expressway  
*Approximately 25 miles*
- Osceola Parkway Extension  
*Approximately 9 miles*



## Concept, Feasibility & Mobility Studies

### Overall Goals of the Project Corridors

- Improve roadway connections from I-4/SR 429 to Florida's Turnpike, to US 192 and SR 417;
- Promote regional connectivity and enhance mobility of the area's growing population and economy via a high-speed expressway;
- Provide additional traffic capacity within the study area;
- Reduce congestion and delays on local roads by providing a new limited-access transportation option;
- Provide for the incorporation of transit options.

**Input from both the EAG and PAG contributed to the development of the Purpose & Need for each corridor segment.**



## Concept, Feasibility & Mobility Studies

### Study Methodology

The analysis has incorporated and built upon the previous work and coordination achieved from the preceding studies, while conducting a “fresh-look” at the proposed corridor segments and researching recent information that could influence the current decision-making.

- Documentation of the physical, natural, social and cultural environment, and assessment of potential impacts.
- Transportation demands have been determined and a range of transportation mobility options and programs are being developed and evaluated.
- If corridor(s) are found to be feasible, would proceed to a Project Development and Environment (PD&E) Study.





## Concept, Feasibility & Mobility Studies

### Public Involvement

Public involvement and stakeholder coordination are an integral part of the study and multiple opportunities for participation are being provided.

- Environmental Advisory Group & Project Advisory Group (July, January & February)
- Public Meetings
  - Kick-off: Sept. 19 & 26, Oct. 5, 2017 (400+ attendees, 284 comments received)
  - Draft Concept Report: Feb. 13, 15 & 21
- Board Presentations:
  - Polk County Board of Commissioners: Aug. 8
  - Osceola County Expressway Authority: Oct. 10
  - Central Florida Expressway Authority: Oct. 12
- Additional Stakeholder Meetings - Ongoing
- CFX Study Webpage:



<https://www.cfxway.com/agency-information/plans-studies/project-studies/public-involvement/>

- Study Facebook Page - <https://www.facebook.com/pg/CFXConceptStudies/about/>

## Concept, Feasibility & Mobility Studies

# Osceola Parkway Extension

# Osceola Parkway Extension Project Background

- **March 2012:** Osceola County's Osceola Parkway Extension Preliminary Feasibility Study
- **June 2012:** ETDM Programming Screen Summary Report published (ETDM No. 13789)
- **September 2012:** OCX & Florida's Turnpike initiated PD&E Study
- **January 2017:** PD&E Study Public Hearing held
- **May 12, 2017:** OCX approved PD&E Preliminary Environmental Impact Report (PEIR)

# Osceola Parkway Extension Project Update

- 1. Where were we last time we met?**
- 2. What's happened since then?**
- 3. What have we done with your input?**
- 4. What are our current alternatives?**
- 5. What's next?**

# Osceola Parkway Extension Project Update

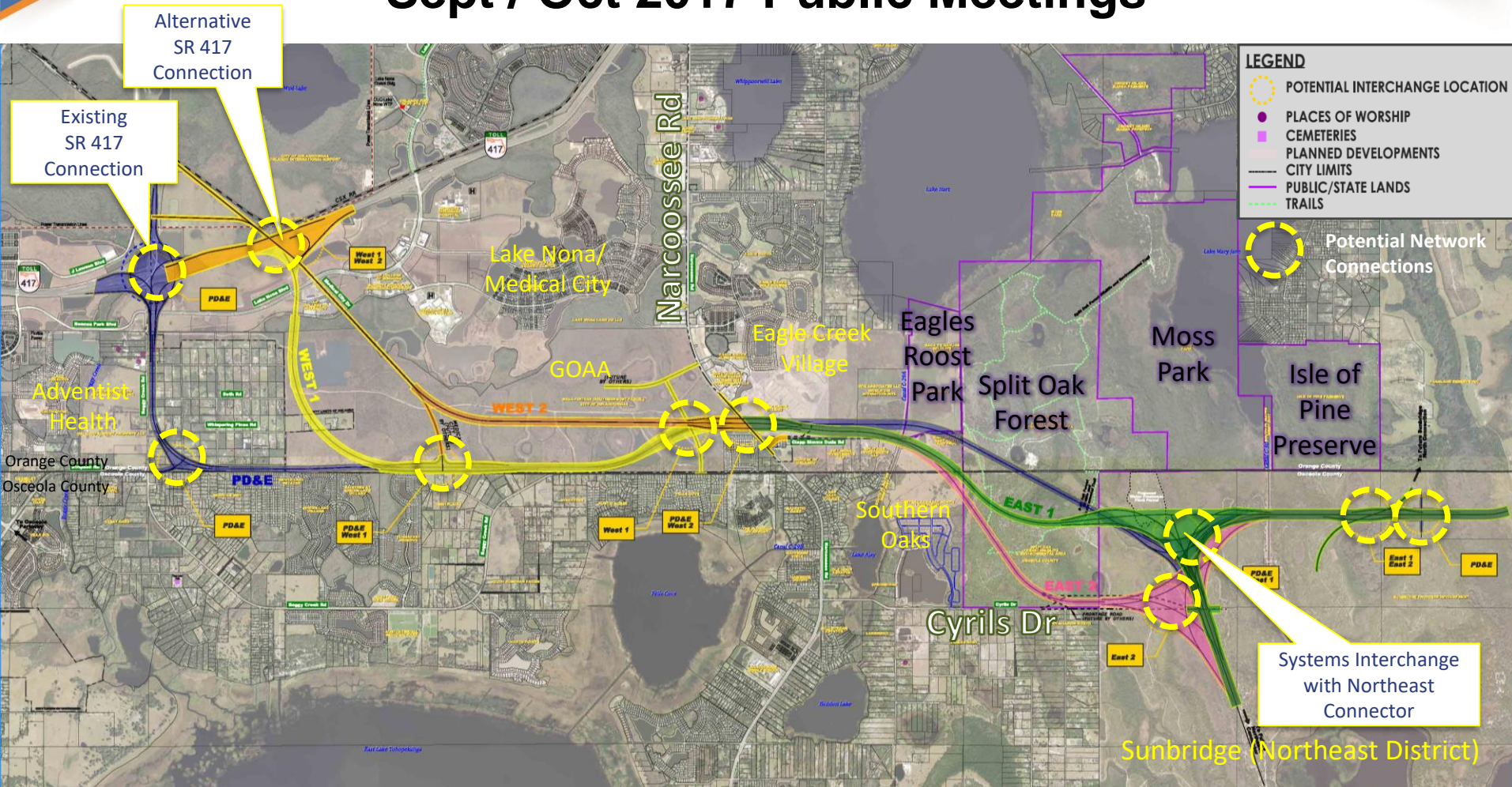
## **1. Where were we last time we met?**

- EAG / PAG Meetings - July 2017
- Public Meetings - September / October 2017
- Initial Corridors Shown



# Initial Corridors

## Sept / Oct 2017 Public Meetings



### Connects to existing SR 417 interchange at Boggy Creek Rd:

- Dark Blue - PD&E Recommended Alternative

### Alternative SR 417 Connection:

- Orange – West 1
- Yellow – West 2

### Alternative Northeast Connections:

- Green – East 1
- Pink – East 2



## Public & Agency Input – What we heard...

- Minimize impacts to Split Oak Forest
- Provide noise barriers and landscape buffers near residences
- Provide for Florida National Trail connectivity across Osceola Parkway Extension
- Minimize impacts to existing residences

# Osceola Parkway Extension Project Update

## 2. What's happened since then?

- Public comments
- Stakeholder meetings
- Agency coordination
- Corridor refinements
- Reduction of impacts

# Osceola Parkway Extension Project Update

## 3. What have we done with your input?

- Six potential alignments (2 west, 4 east)
- Construction cost and right-of-way estimates
- Desktop environmental analysis
- Alternatives evaluation matrix
- Traffic projections



# Osceola Parkway Extension Current Alternatives

CENTRAL FLORIDA EXPRESSWAY AUTHORITY  
Concept, Feasibility & Mobility Study  
Osceola Parkway Extension  
Corridor Alternatives

**LEGEND**

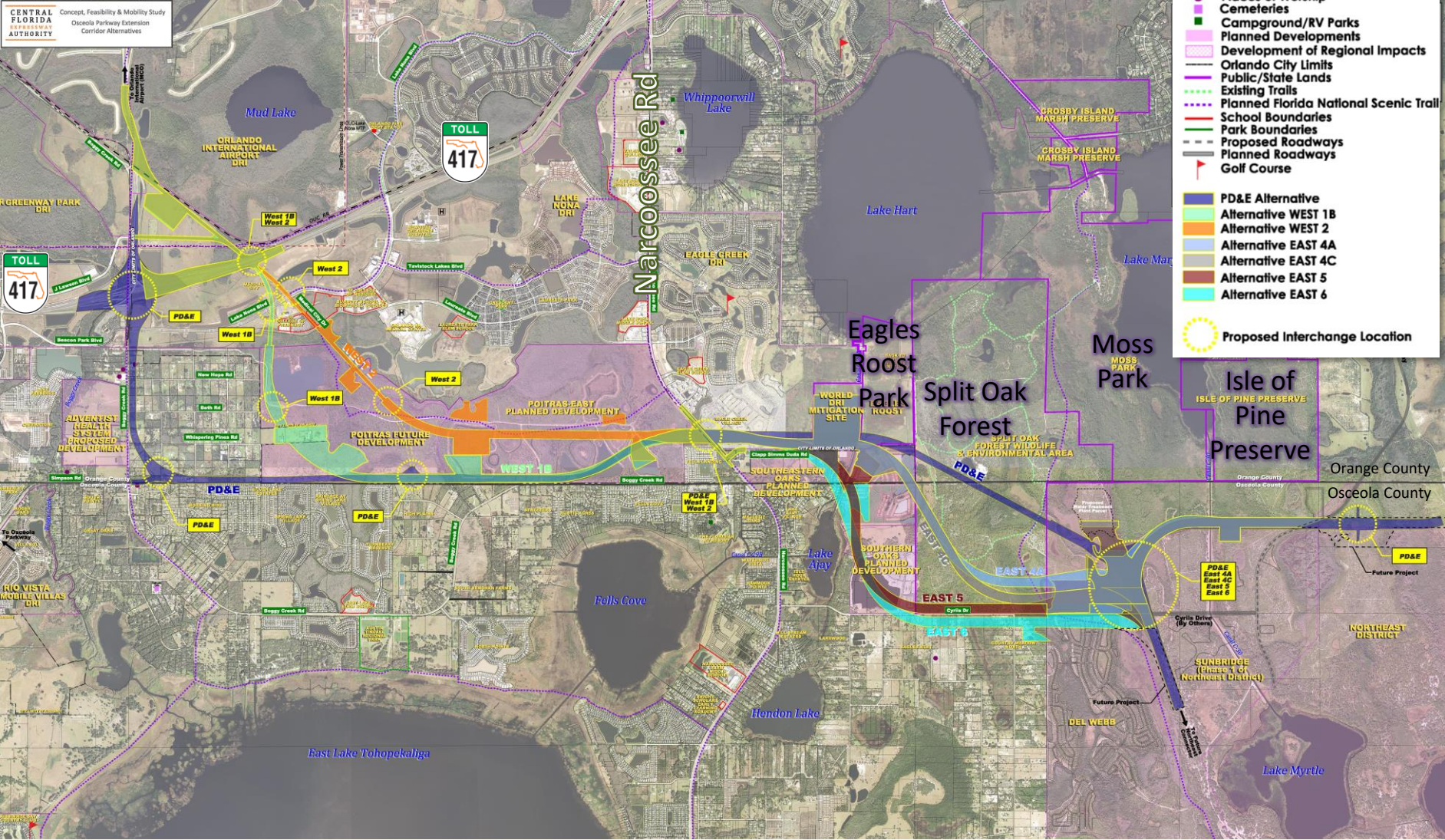
- Places of Worship
- Cemeteries
- Campground/RV Parks
- Planned Developments
- Development of Regional Impacts
- Orlando City Limits
- Public/State Lands
- Existing Trails
- - - Planned Florida National Scenic Trail
- School Boundaries
- Park Boundaries
- - - Proposed Roadways
- - - Planned Roadways
- ▲ Golf Course

- PD&E Alternative
- Alternative WEST 1B
- Alternative WEST 2
- Alternative EAST 4A
- Alternative EAST 4C
- Alternative EAST 5
- Alternative EAST 6

- ☀ Proposed Interchange Location





# Osceola Parkway Extension Major Environmental Constraints

**LEGEND**

- NWI Wetland
- 100-Year Floodplain
- Water Management District Easements
- Public/State Lands
- Existing Trails
- Planned Florida National Scenic Trail
- Innovation Way Overlay Area
- Narcoossee Planning Initiative
- Historic Structures
- School Boundaries
- Park Boundaries
- Proposed Roadways
- Planned Roadways
- Orlando City Limits
- PD&E Alternative
- Alternative WEST 1B
- Alternative WEST 2
- Alternative EAST 4A
- Alternative EAST 4C
- Alternative EAST 5
- Alternative EAST 6

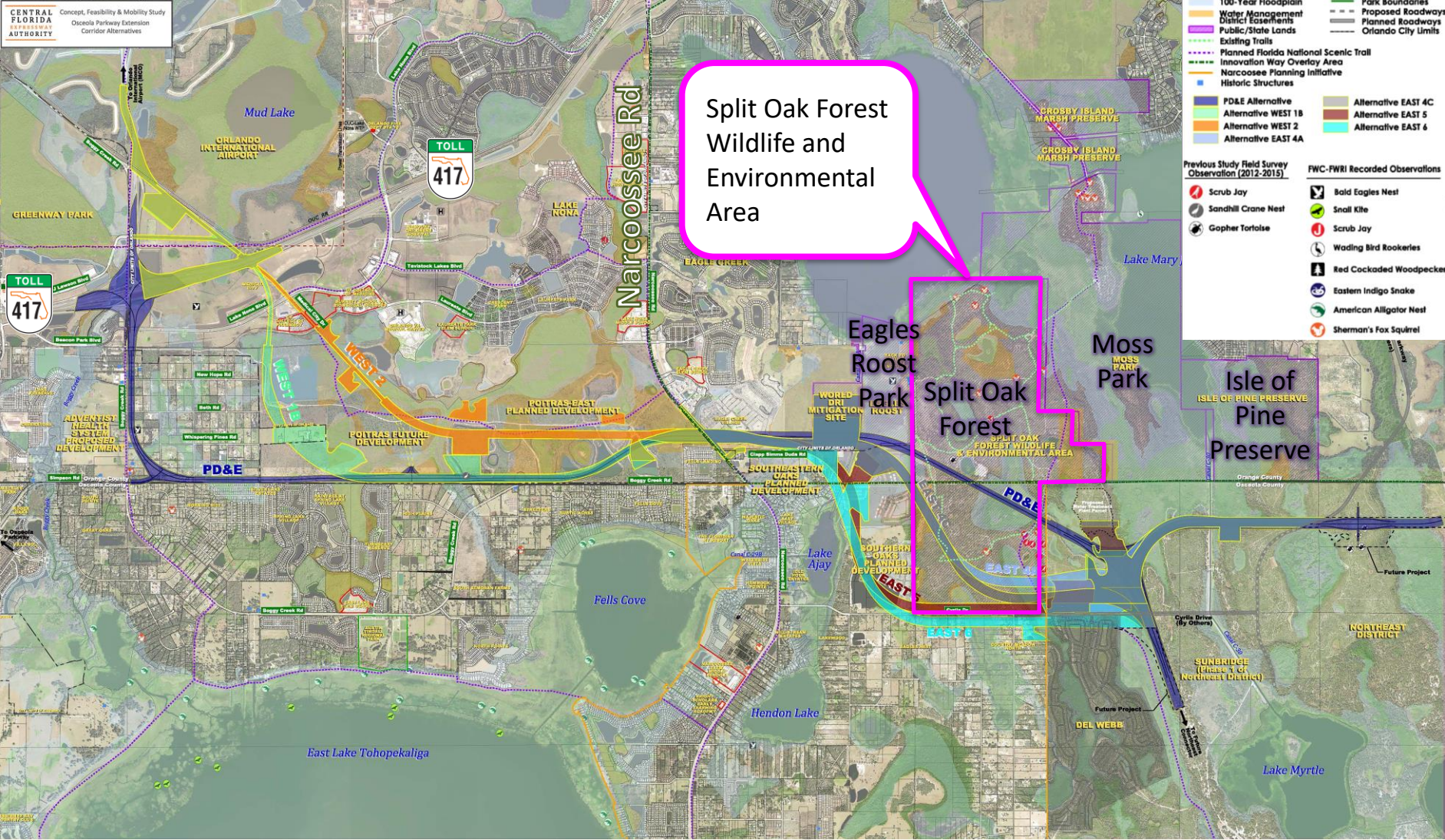
**Previous Study Field Survey Observation (2012-2015)**

- Scrub Jay
- Sandhill Crane Nest
- Gopher Tortoise
- Bald Eagles Nest
- Snail Kite
- Scrub Jay
- Wading Bird Rookeries
- Red Cockaded Woodpecker
- Eastern Indigo Snake
- American Alligator Nest
- Sherman's Fox Squirrel

**FWC-FWRI Recorded Observations**

- Bald Eagles Nest
- Snail Kite
- Scrub Jay
- Wading Bird Rookeries
- Red Cockaded Woodpecker
- Eastern Indigo Snake
- American Alligator Nest
- Sherman's Fox Squirrel

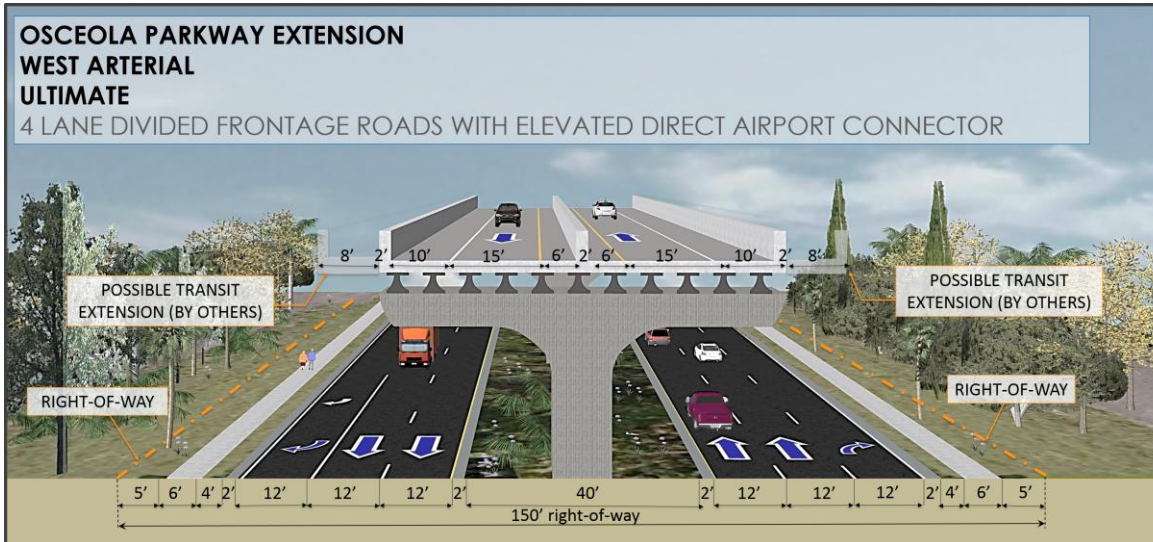
CENTRAL FLORIDA EXPRESSWAY AUTHORITY  
Concept, Feasibility & Mobility Study  
Osceola Parkway Extension  
Corridor Alternatives



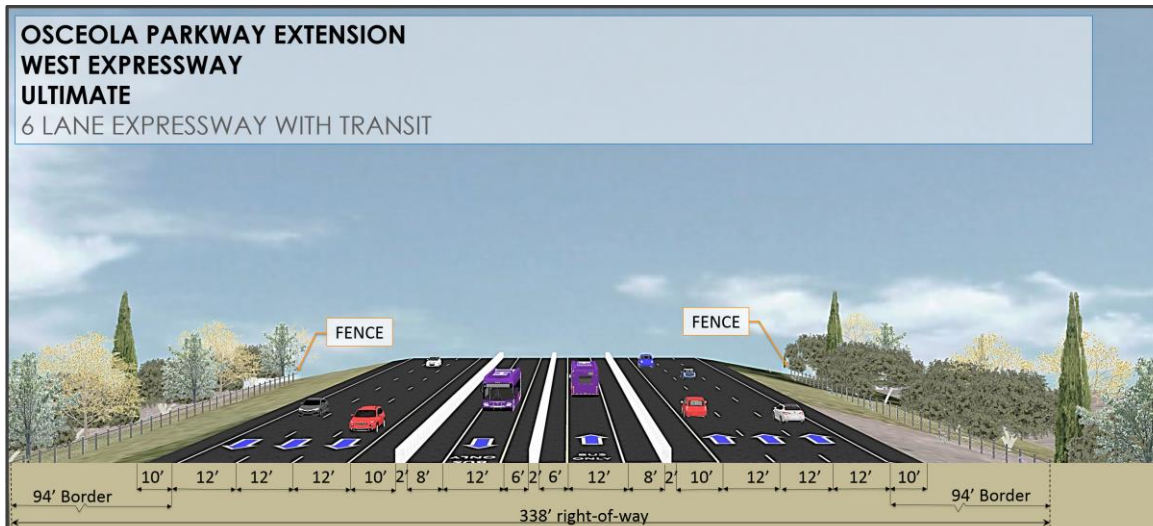
Split Oak Forest  
Wildlife and  
Environmental  
Area



# Osceola Parkway Extension West Ultimate Typical Sections



Limits:  
Jeff Fuqua Boulevard to  
Laureate Boulevard



Limits:  
Laureate Boulevard to  
Narcoossee Road



# Osceola Parkway Extension

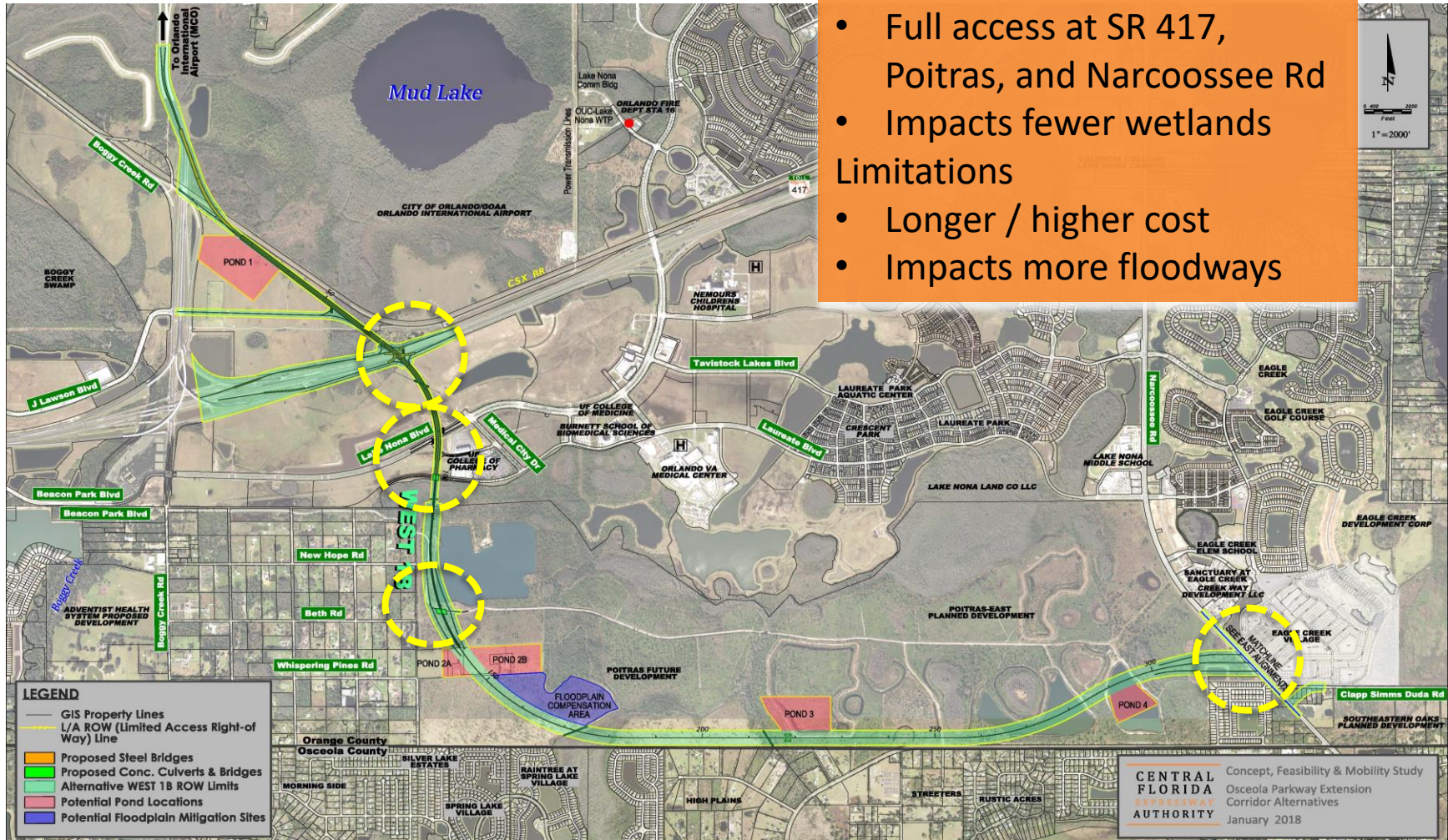
## Current Alternative – West 1B

### Advantages

- Full access at SR 417, Poitras, and Narcoossee Rd
- Impacts fewer wetlands

### Limitations

- Longer / higher cost
- Impacts more floodways





# Osceola Parkway Extension

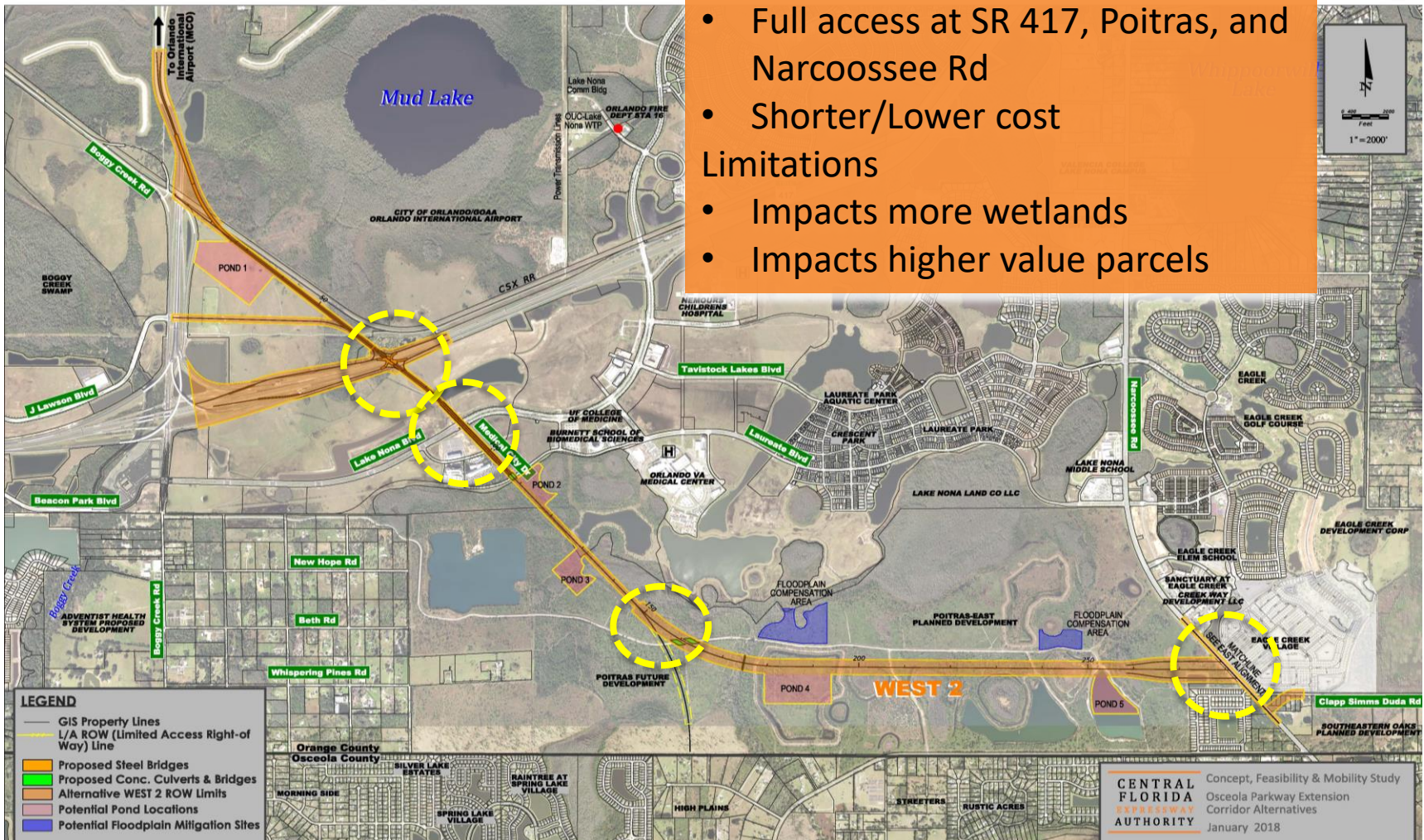
## Current Alternative – West 2

### Advantages

- Full access at SR 417, Poitras, and Narcoossee Rd
- Shorter/Lower cost

### Limitations

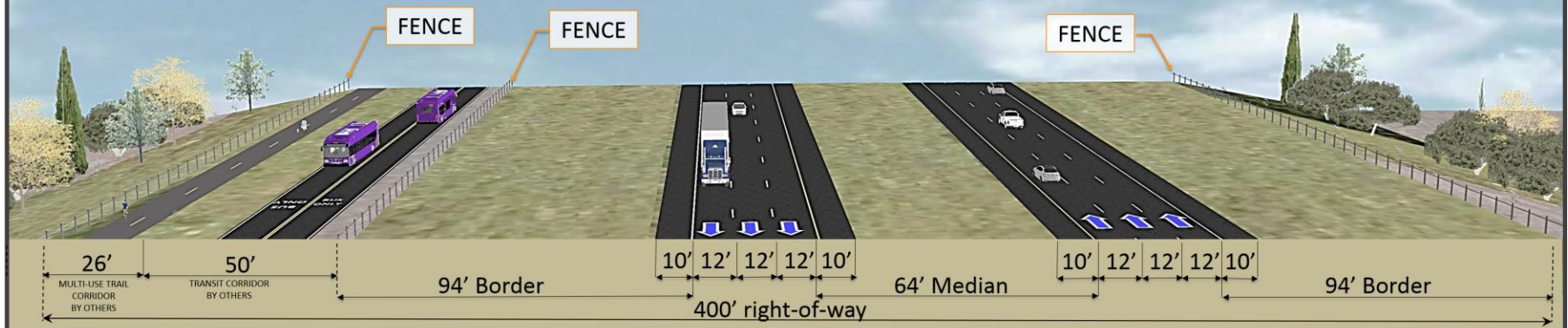
- Impacts more wetlands
- Impacts higher value parcels



# Osceola Parkway Extension East Expressway Ultimate Typical Section

## OSCEOLA PARKWAY EXTENSION EAST EXPRESSWAY ULTIMATE

6 LANE EXPRESSWAY WITH TRANSIT AND MULTI-USE TRAIL





# Osceola Parkway Extension

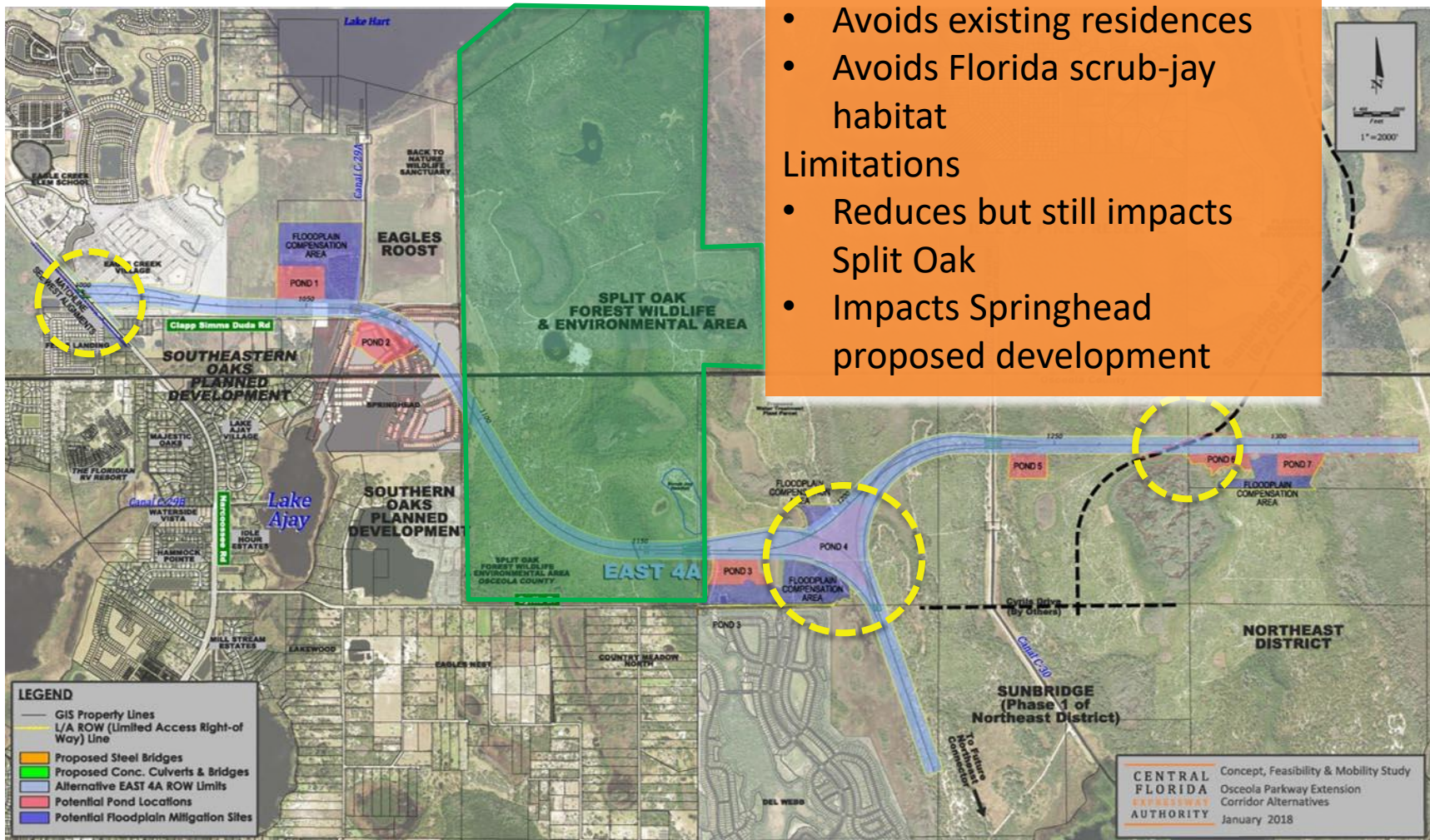
## Current Alternative – East 4A

### Advantages

- Avoids existing residences
- Avoids Florida scrub-jay habitat

### Limitations

- Reduces but still impacts Split Oak
- Impacts Springhead proposed development





# Osceola Parkway Extension

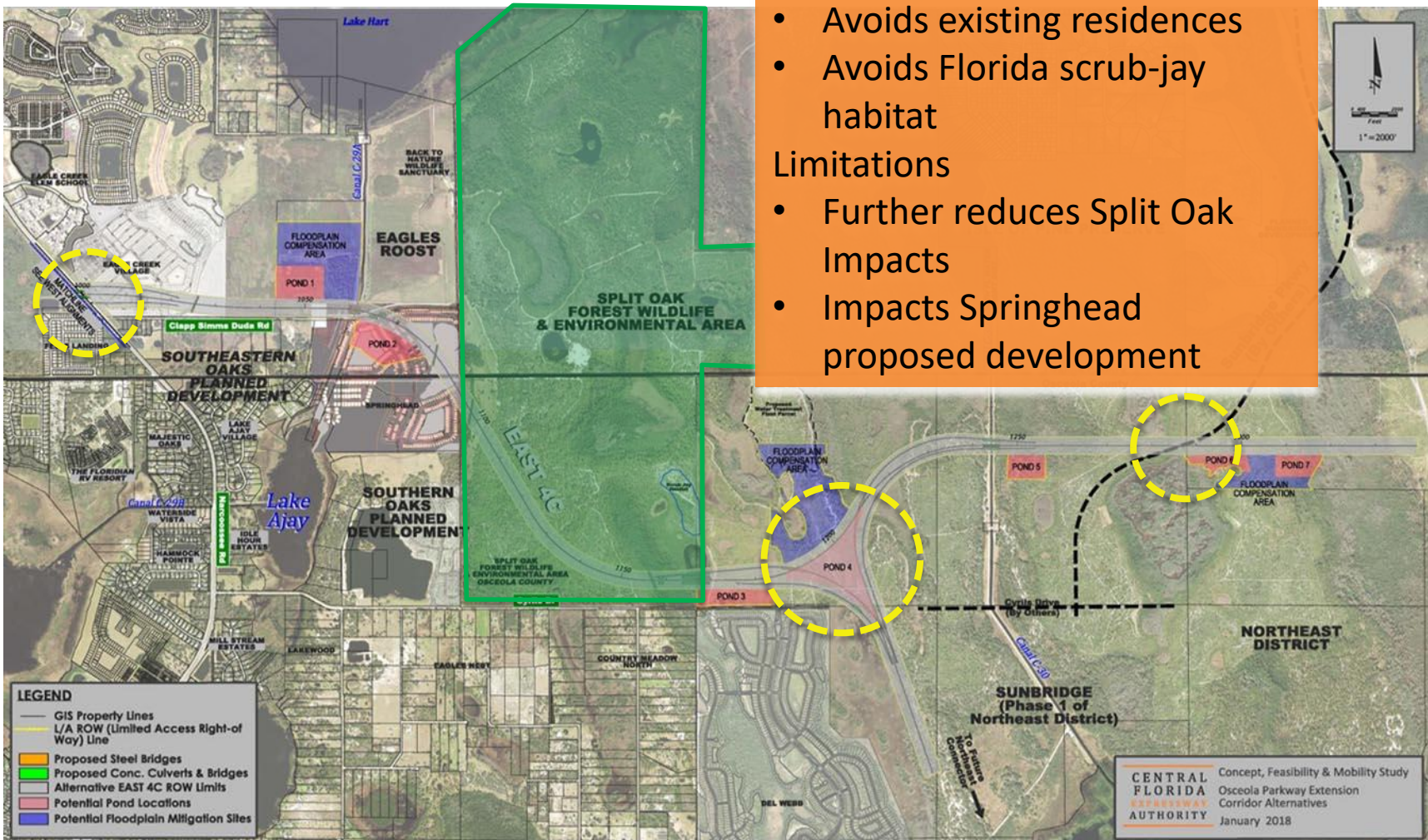
## Current Alternative – East 4C

### Advantages

- Avoids existing residences
- Avoids Florida scrub-jay habitat

### Limitations

- Further reduces Split Oak Impacts
- Impacts Springhead proposed development



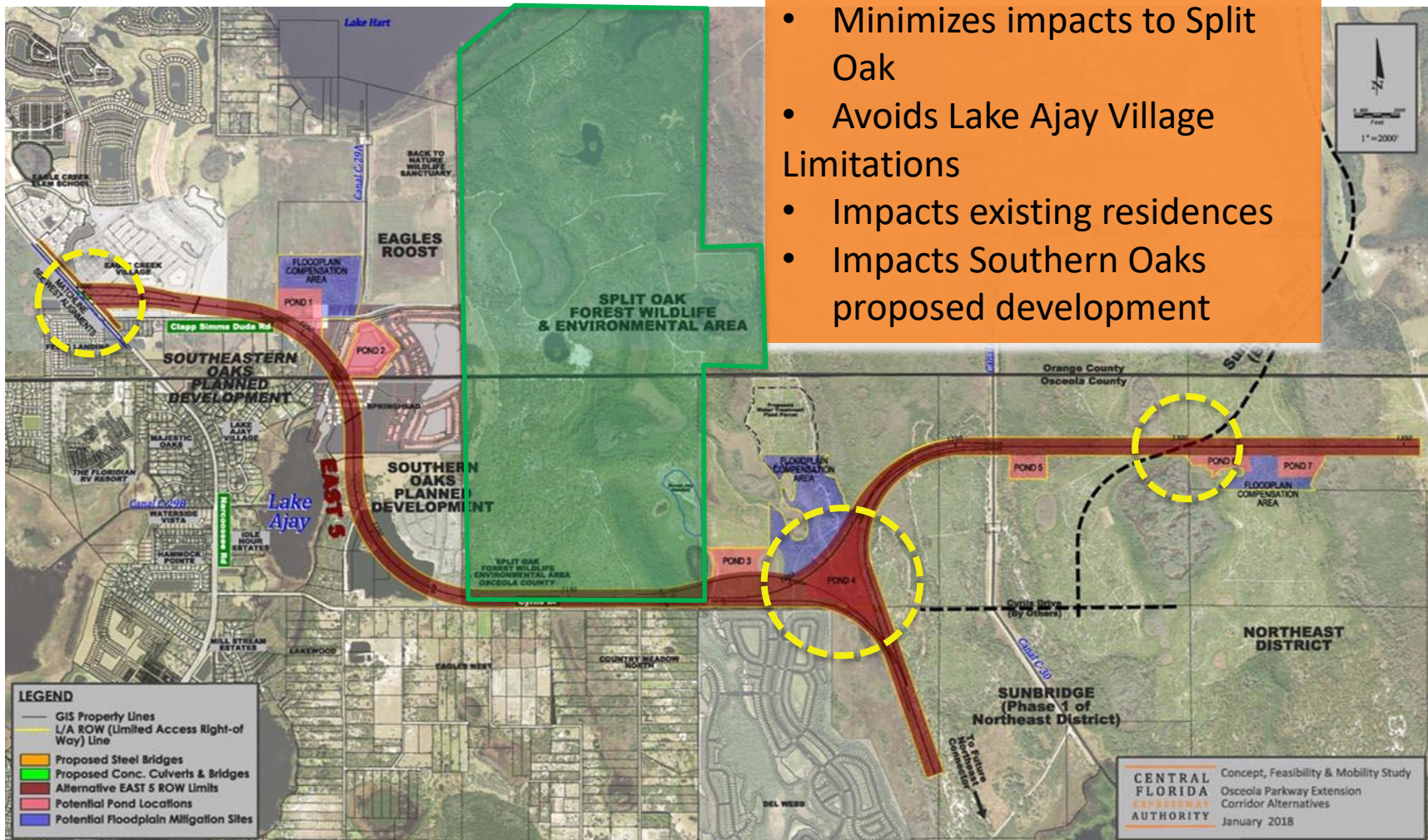


# Osceola Parkway Extension

## Current Alternative – East 5

### Advantages

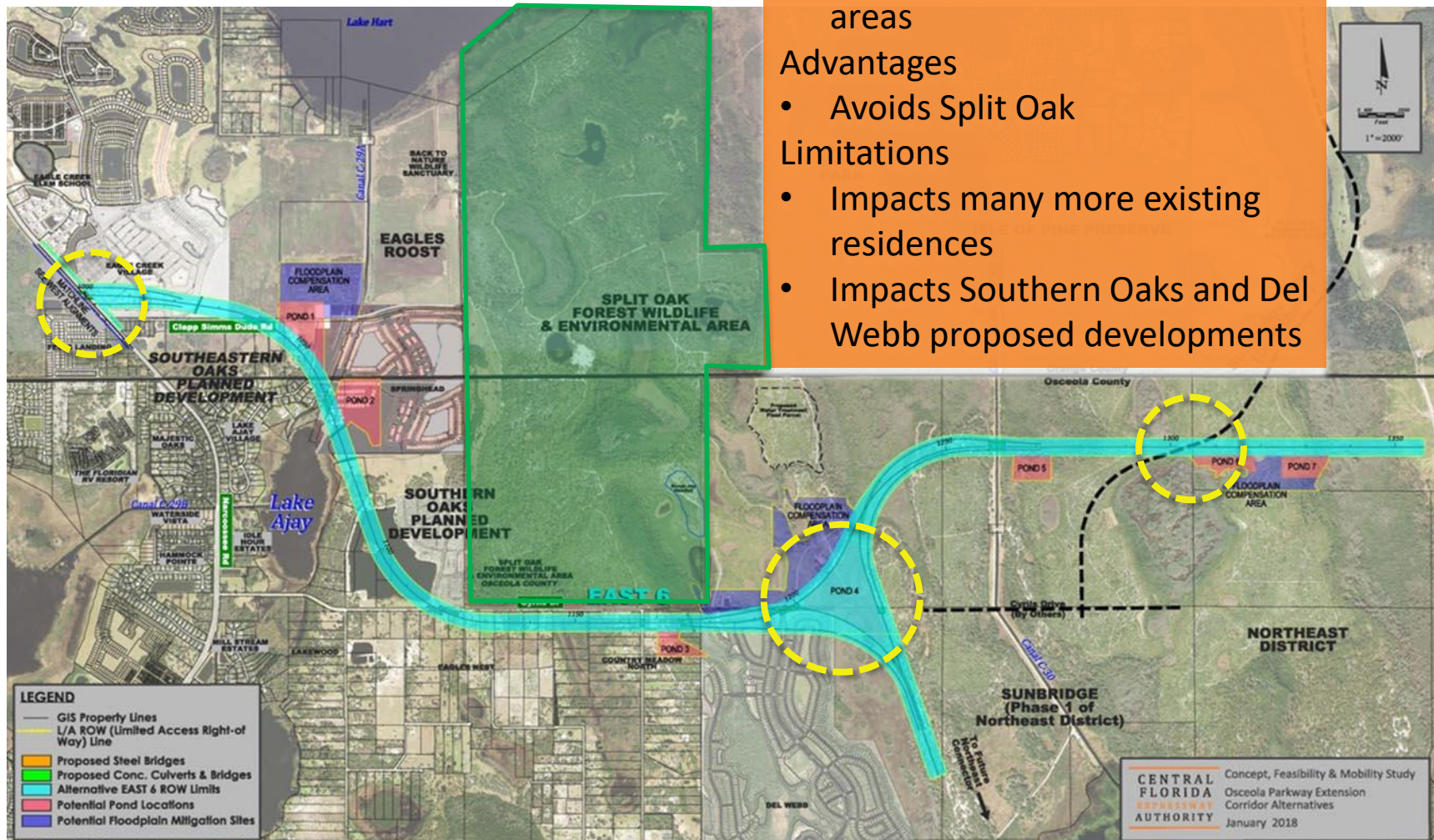
- Minimizes impacts to Split Oak
- Avoids Lake Ajay Village Limitations
- Impacts existing residences
- Impacts Southern Oaks proposed development





# Osceola Parkway Extension

## Current Alternative – East 6



- No impacts to recreational areas

### Advantages

- Avoids Split Oak

### Limitations

- Impacts many more existing residences
- Impacts Southern Oaks and Del Webb proposed developments





# Osceola Parkway Extension Project Update

## 5. What's next?

- Incorporate all EAG / PAG / Public Input
- Refine corridors reflecting that input
- Complete summary report
- Present to CFX Board on March 8, 2018

## Concept, Feasibility & Mobility Studies

# Open Discussion

## Concept, Feasibility & Mobility Studies

### Next Steps

- PAG Meetings – Feb. 6 & 8
- Public Meetings – Feb. 13, 15 & 21
- Consultants Update Draft Concept Report
- Board Presentations – TBD
- CFX Board Concept Draft Report Review & Discussion –  
March 8
- Consultants Finalize Concept Report

## Concept, Feasibility & Mobility Studies

# Action Items

# Concept, Feasibility & Mobility Studies

For More Information, Contact:

Mary Brooks

Public Involvement Coordinator

Email: [ConceptStudies@cfxway.com](mailto:ConceptStudies@cfxway.com)

Hotline: 407-802-3210

Web Address:

<https://www.cfxway.com/agency-information/plans-studies/project-studies/public-involvement/>

Follow the Studies on Facebook

<https://www.facebook.com/pg/CFXConceptStudies/about/>

