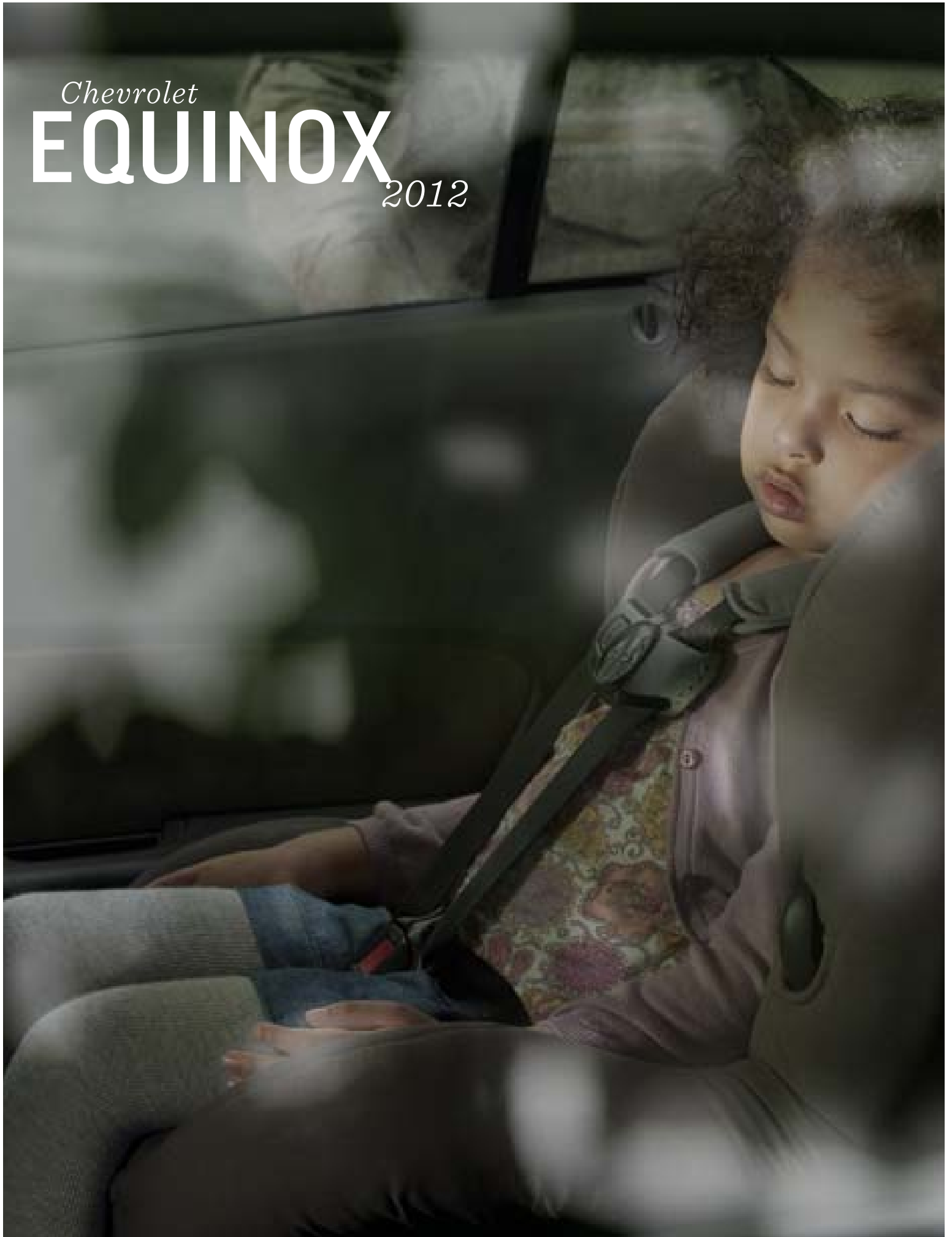


*Chevrolet*  
**EQUINOX**  
*2012*



# NOTHING IS BETTER THAN

*going wherever you want to go.*

*With 32 MPG highway<sup>1</sup>  
and a range of up to 600 highway miles  
per tank, you can travel farther  
down the road while getting closer  
to the things you love.*

*Family. Freedom.*

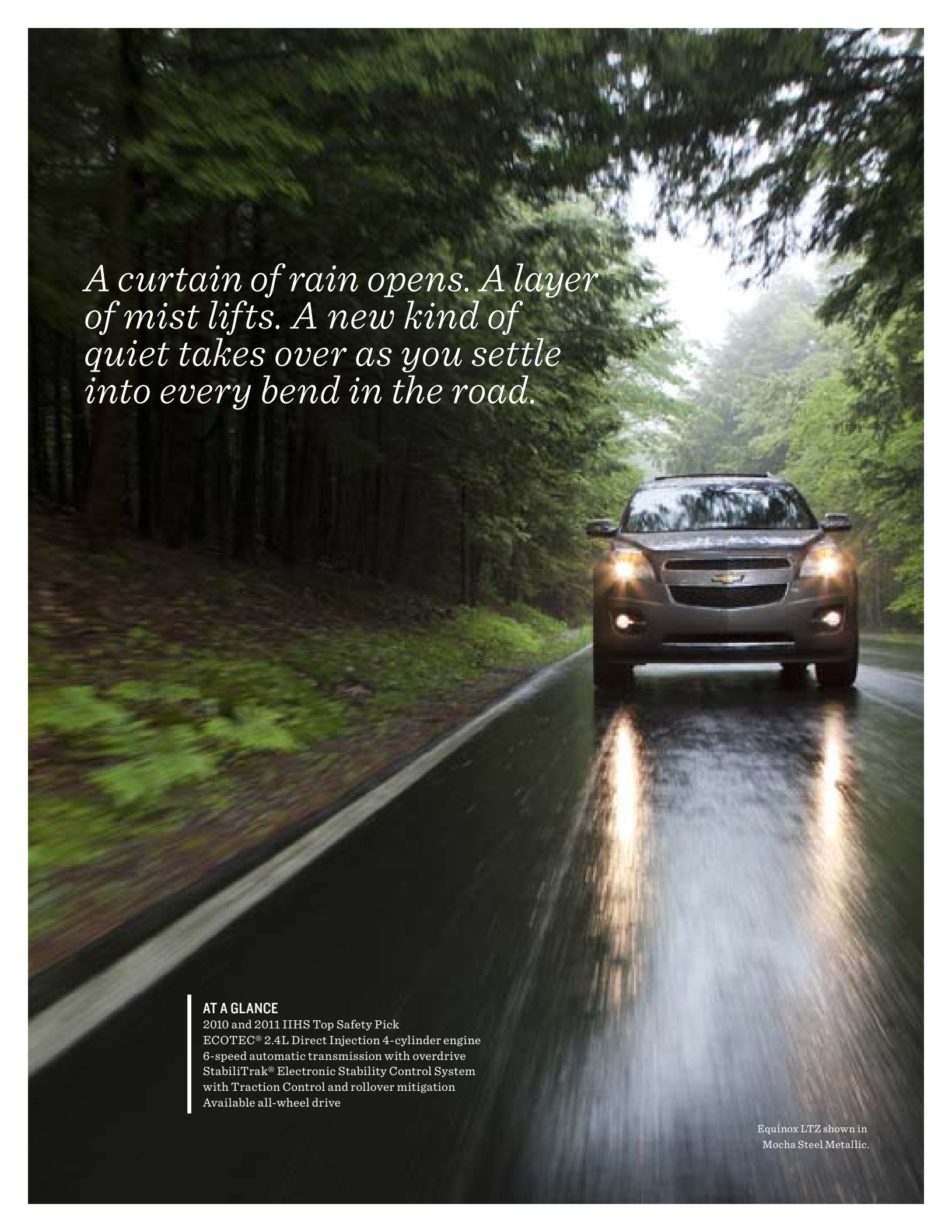
## EQUINOX.



1 EPA-estimated.



Equinox LTZ shown in Mocha Steel Metallic with available features.

A Chevrolet Equinox is shown from a front-quarter perspective, driving on a wet, paved road that reflects its headlights. The car is positioned in the lower right quadrant of the frame. The road is flanked by dense, green trees, creating a tunnel-like effect. The overall atmosphere is misty and serene, with soft lighting filtering through the foliage. The text is overlaid on the left side of the image.

*A curtain of rain opens. A layer  
of mist lifts. A new kind of  
quiet takes over as you settle  
into every bend in the road.*

**AT A GLANCE**

2010 and 2011 IIHS Top Safety Pick  
ECOTEC® 2.4L Direct Injection 4-cylinder engine  
6-speed automatic transmission with overdrive  
StabiliTrak® Electronic Stability Control System  
with Traction Control and rollover mitigation  
Available all-wheel drive

Equinox LTZ shown in  
Mocha Steel Metallic.

*Self-professed car nut, sports nut, coach and father of three boys, Global Chief Engineer Mike Anderson has spent the past 20 years working on practically every nameplate. The last ten have been devoted entirely to powertrain.*

“The **ECOTEC 2.4L DOHC** engine in Equinox uses **DIRECT FUEL INJECTION** to increase fuel economy.<sup>1</sup> It allows the compression ratio to be raised, which improves efficiency, but also helps get more engine performance. When the air inside the cylinder is cooled down by evaporating fuel, the engine produces more torque, especially at low speeds. This can allow the engine to be downsized a bit. The ratios in the transmission can then be selected to help keep engine speed down, raising MPG. Everything makes a difference and it was very important for us to aim for the best possible fuel economy we could get.

“We also use **VARIABLE VALVE TIMING**, which continually adjusts the opening and closing of the valves in the engine by changing the phasing between the camshaft and the crankshaft. All that sounds like a lot of technical jargon, but what it allows us to do is optimize engine operation to get more low-end torque and excellent gas mileage.”

Anderson says that pushing the innovative **ECO BUTTON** “can further optimize engine operation by adjusting transmission shift patterns, which maximizes fuel efficiency. Onboard computers in Equinox are constantly selecting the transmission gears based on various driver inputs. When the driver selects Eco mode, the computer tries to get you to higher gears sooner, which helps fuel economy.

**MIKE ANDERSON**  
GLOBAL CHIEF ENGINEER



# BREAKOUT PERFORMANCE



“The other thing Eco mode does is lock the torque converter clutch as often as possible. The more often the clutch is locked, drivetrain efficiency is increased, optimizing fuel economy. Eco mode also lets us run more aggressive decel fuel cutoff. Again, more automotive technical terminology, but what that means is, when the driver decelerates, we’re able to turn the fuel off more frequently. The driver doesn’t need it, so that’s another technique we use that really helps. A lot of these technologies aren’t new, but in the past they’ve created what we call ‘body boom,’ an unpleasant low-frequency rumble. That’s why we’ve introduced **ACTIVE NOISE CANCELLATION** on 4-cylinder models. By using the subwoofers to broadcast pressure waves with the opposite phase of unwanted sounds, we’re able to cancel out noises like boom. It’s really an enabler to allow many of these fuel-saving technologies to be used without unpleasant side effects.”

Anderson notes that, for the more performance-minded customer, a 3.0L V6 is also available. “The V6 has two more cylinders and, by virtue of that extra displacement, it delivers more power and acceleration, more refinement, and increased towing capabilities. The increased performance comes in the form of better launch and better passing, and the refinement comes in the form of tonal quality. It also has a lot of the same technologies as the 4-cylinder, like variable valve timing and direct injection, to optimize fuel efficiency.<sup>2</sup> The 4-cylinder really gets you moving efficiently, but the V6 is more performance-focused, for someone who really wants more acceleration sooner.”

<sup>1</sup> 2.4L 4-cylinder: EPA-estimated 22 MPG city/32 highway (FWD); 20 city/29 highway (AWD).  
<sup>2</sup> 3.0L V6: EPA-estimated 17 MPG city/24 highway (FWD); 16 city/23 highway (AWD).

*Going*  
**THE DISTANCE  
WITH ECO EFFICIENCY  
AND 32 MPG**  
*on the highway.<sup>1</sup>*



*The*  
*unforgettable*  
**MANHATTAN,  
MYSTIC, BOSTON,  
BAR HARBOR**  
*road trip.*

You'll soon feel at home on the road with Equinox. Whether you're driving from New York through New England; from Cleveland to Charlotte; or from Wilmington, Delaware, to Wilmington, North Carolina, Equinox really knows how to make the most of every mile.

Part of the secret lies in the Eco button on the center console. One touch and the powertrain reconfigures to maximize efficiency. The transmission's shift points change and idle speeds lower so power is used more efficiently, optimizing fuel economy.

Other technologies also help create an unforgettable experience. Direct fuel injection uses fuel more efficiently. A 6-speed automatic transmission allows lower shift speed, saving fuel and propelling your getaway further. An aerodynamic design slices through the air, reducing drag and boosting efficiency. While low-rolling resistance tires produce less friction, leaving more money in your pocket to spend on lobster dinners, ice cream cones and breezy beachwear.

After all, you don't get 32 MPG on the highway<sup>1</sup> without sophisticated engineering. And long-range thinking.

<sup>1</sup> EPA-estimated.



*Director of Design Crystal Windham has a big job. She also has a big vision. In her mind, interiors are about a lot more than color and trim; they're about creating a new experience for the customer.*

“At Chevy, we like to design interiors that are warm and inviting, where our customers feel comfortable, almost like they were in their second home. We also want to include what I call ‘surprise and delight’ features, the unexpected touches that still feel natural and help draw people to the vehicle. The choice of material can be one of those touches, harmonizing the overall design without being overstated. And since it’s unexpected, the customer feels as though they have something special.

“What I really like about the Equinox interior is the balance of functionality with design. The nice flow from the instrument panel through the dual cockpit into the center stack. The wonderful accents in the center stack where the controls for the radio are clearly outlined so as to be distinct from the temperature controls. For the customer, it’s very easy to use. I also think the functionality of the vehicle is great.

# MORE ALL AROUND

“I’m going to tell you a little story,” she says. “I drove the Equinox for about a year, and I wanted to drive it everywhere. It’s the perfect size, it’s nice and nimble, the kids fit in it great. My husband would comment that I would always want to drive the Equinox no matter where we went. ‘Of course,’ I would say. One day, we had to go to a home improvement store. We had to pick up a few boxes and they wouldn’t quite fit. I was a little nervous, afraid I was going to hear, ‘I told you so.’ Then, I remembered it had a sliding rear seat feature. So I was able to slide the rear seat forward, and the boxes fit in perfectly. He didn’t say anything. I just smiled.”

Equinox LTZ  
leather-appointed seat  
shown in Brownstone with  
color-contrasted stitching.

**CRYSTAL WINDHAM** DIRECTOR OF DESIGN







#### AT A GLANCE

- Comfort for five passengers
- Reclining 60/40 split-folding rear seat
- Tilt and telescopic steering wheel
- The most rear leg room in its class
- Acoustic laminated glass and triple door seals

#### INTERIOR LANDSCAPE

Outside, there may be coastlines and rocky headlands, but inside, Equinox offers dual coves and soft surrounds. Eyes follow along available leather-appointed seats with two-toned panels and color-contrasted stitching. With ample seating for five, Equinox is a sanctuary of sorts. Cool, ice-blue **LED LIGHTING** creates ambiance throughout, while special acoustic laminated glass, triple door seals and **ACTIVE NOISE CANCELLATION** help keep the cabin quiet so you can relax and unwind. Even details like a curved gas pedal enhance driving comfort, no matter how high or low the heel. It's touches like these that make Equinox feel like home—away from home.

Equinox LTZ interior shown in Brownstone with available features.



## STATE OF THE ARTS

Available Chevrolet MyLink<sup>1</sup> brings your apps like Pandora and Stitcher<sup>3</sup> along for the ride.

Where would modern life be without technology? For those of you who just can't get enough, Chevrolet MyLink<sup>1</sup> is available to keep you entertained, informed and in the loop.

**1. CONNECT TO THE FUTURE.** Equinox presents Chevrolet MyLink, a new technology available on 1LT<sup>2</sup> and standard on 2LT and LTZ, available Spring 2012. It aggregates content from a compatible smartphone onto an available seven-inch diagonal color touch-screen. Through voice commands or touch controls, you can instantly access music and content from online sources like Pandora<sup>®</sup> and Stitcher SmartRadio<sup>™3</sup>. Listen to self-created radio stations and playlists. Hear personalized news and talk programs. Enjoy seamless integration with Gracenote<sup>®</sup>, which organizes your music library by populating song information and album art. Chevrolet MyLink also integrates select phones via Bluetooth<sup>®4</sup> so you can use voice recognition for hands-free calling. Or press the on-screen phone icon to access contacts and call information. Just reach out and connect—with anyone.

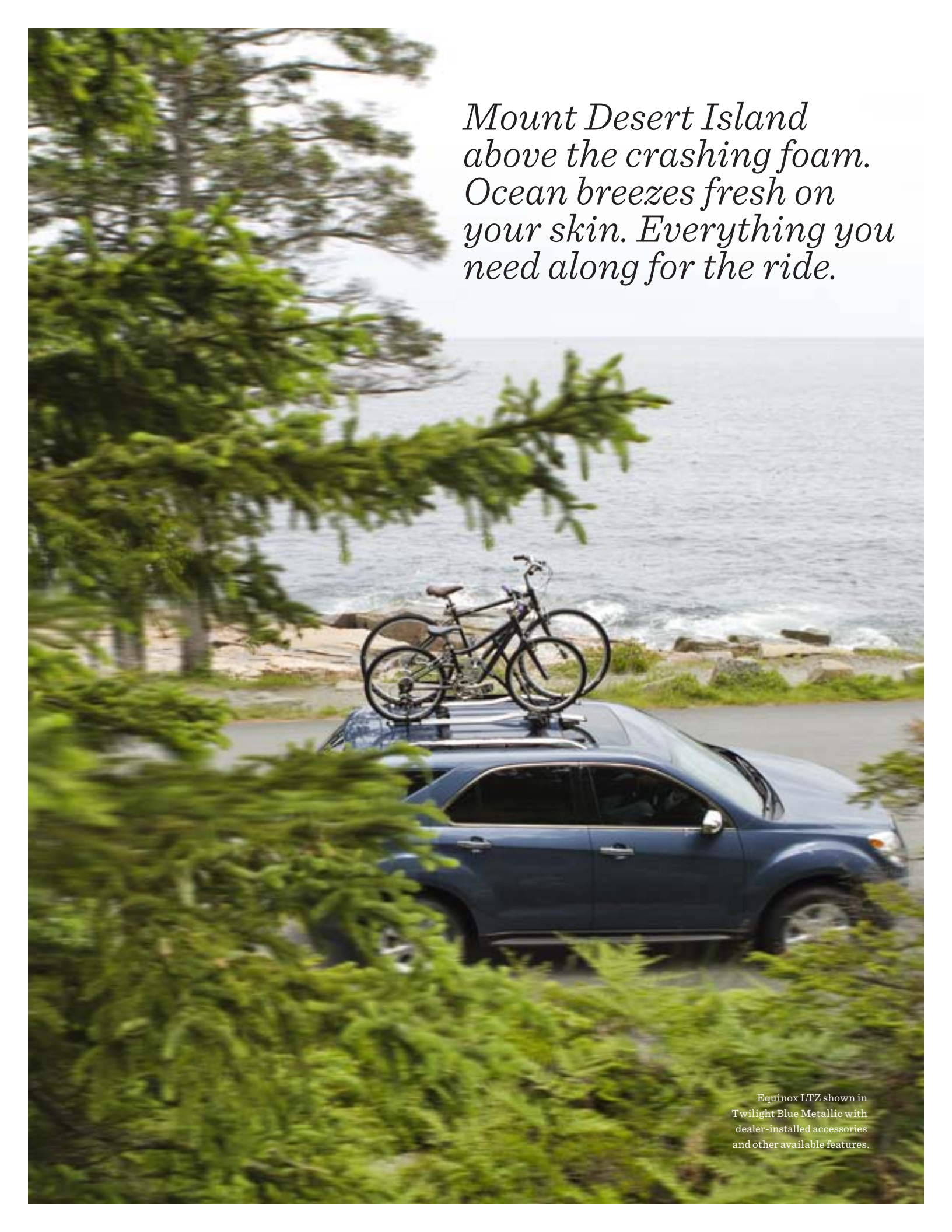
**2. EXPECT PERFORMANCE.** On Equinox 2LT and LTZ, your radio does more than play. It transforms. Eight strategically placed Pioneer<sup>®</sup> speakers pump out incredible sound, transforming your vehicle into a mobile music studio. It's all part of a 250-watt Pioneer premium sound system that was designed specifically for Equinox.

**3. COLOR COMMUNICATES.** The Color Touch Radio fully integrates with your MP3 player or music-loaded flash drive. And with a seven-inch diagonal color touch-screen radio, you can match your music to the moment. Standard on 1LT, and standard on 2LT and LTZ until Spring 2012.

**4. SUPPORT MUSIC.** Plug your iPhone<sup>®</sup>, iPod<sup>®5</sup> MP3 player or a flash drive loaded with music into the available USB port<sup>6</sup> and rock out.

**5. CONTROL AT YOUR FINGERTIPS.** Steering wheel-mounted audio controls give you command over phone calls made with Bluetooth<sup>4</sup> wireless for select phones, as well as radio functions like volume and station selection. So many advancements within reach.

<sup>1</sup> Limited availability. Full functionality requires compatible Bluetooth and smartphone. Some devices require USB connectivity. <sup>2</sup> Requires available Driver Convenience Package. <sup>3</sup> Data plan rates apply. <sup>4</sup> Go to [gm.com/bluetooth](http://gm.com/bluetooth) to find out which phones are compatible with the vehicle. <sup>5</sup> iPod and iPhone are registered trademarks of Apple Inc. All rights reserved. <sup>6</sup> Not compatible with all devices.



*Mount Desert Island  
above the crashing foam.  
Ocean breezes fresh on  
your skin. Everything you  
need along for the ride.*

Equinox LTZ shown in  
Twilight Blue Metallic with  
dealer-installed accessories  
and other available features.

## WHEN WE DESIGN SPACE, WE PUT EVERYTHING INTO IT

We looked high and low, beside, between and under, turning lots of unexpected spots into usable places. With a total of **18 STORAGE AREAS**, from a cell phone cubby with its own power outlet to an oversized center console able to store a laptop or purse, you might just wonder why they call Equinox “compact” at all.

Larger packing jobs benefit from the ingenious **MULTI-FLEX® SLIDING REAR SEAT**, which is also a **60/40 SPLIT-FOLDING SEAT**, that adds greater flexibility. Folded flat, it creates 63.7 cubic feet of very uncompact cargo space! Slide the seat forward to add almost eight extra inches of storage. Slide it back to add almost eight extra inches of rear leg room for taller passengers—the most in its class. And because we try to imagine all the ways you can use Equinox, we offer an available segment-exclusive **PROGRAMMABLE POWER LIFTGATE**. So now you decide how high you want the liftgate to open. The fun pours out on its own.



Equinox LTZ shown in Twilight Blue Metallic with dealer-installed accessories and other available features.

† Cargo and load capacity limited by weight and distribution.

## INSTANT COMMUNICATION

Innovation that's in line with your expanding circle.

OnStar<sup>®</sup> standard with Directions & Connections<sup>®1</sup> for six months, is the simple way to stay connected on the road. Push the blue **ONSTAR BUTTON** and get unlimited voice-guided and visual directions via **TURN-BY-TURN NAVIGATION**.<sup>1</sup> Download directions to your vehicle from MapQuest<sup>®</sup> or Google Maps<sup>2</sup> through eNav<sup>SM</sup> and plan ahead to save even more time.

**1. REMOTE COMMUNICATION.** Two apps keep you in touch with what matters most. Download the **MYCHEVROLET**<sup>3</sup> app and in minutes you can schedule a service appointment online or use it to create a reminder of where you parked your vehicle. Then there's the **ONSTAR REMOTELINK**<sup>TM4</sup> app, another convenience that allows you to remotely lock and unlock your vehicle and start the engine<sup>5</sup> from your smartphone. You can even receive monthly emails detailing key engine and operating systems through **ONSTAR VEHICLE DIAGNOSTICS**.

**2. OUTSMART TRAFFIC.** Thanks to an available **COLOR TOUCH NAVIGATION RADIO** with a seven-inch diagonal screen, you can follow up-to-the-minute traffic through **SIRIUSXM NAVTRAFFIC**<sup>6</sup> with a three-month trial. Across town or cross-country, Equinox keeps you in the loop. Coming or going.

<sup>1</sup> Visit [onstar.com](http://onstar.com) for coverage map, details and system limitations. Services vary by model and conditions. <sup>2</sup> Google is a trademark of Google Inc. <sup>3</sup> Requires Android or iPhone platform. <sup>4</sup> Requires Android or iPhone platform and active OnStar subscription, which is standard for six months. <sup>5</sup> Requires available Remote Start. <sup>6</sup> Requires available navigation radio and subscription sold separately by SiriusXM after trial period. Available only in select markets. For more information, see [siriusxm.com/navtraffic](http://siriusxm.com/navtraffic).





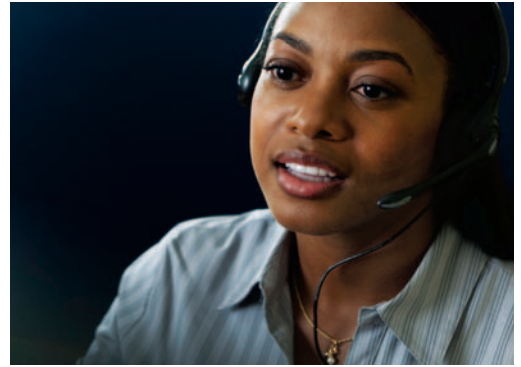
Equinox LTZ shown in  
Gold Mist Metallic  
with available features.

*word travels*



Equinox LTZ shown in  
Silver Ice Metallic  
with available features.

*A safety philosophy that* **RUNS DEEP**



### BEFORE

What's the best safety philosophy? Avoid a collision in the first place. That's why we've equipped Equinox with a wide variety of advanced safety features, including available **FORWARD COLLISION ALERT** and **LANE DEPARTURE WARNING**. This technology is part of a new active safety package that combines a high-resolution digital camera with advanced image processing. The camera is mounted on the windshield ahead of the rearview mirror and, in the case of **FORWARD COLLISION ALERT**, continually monitors the proximity to vehicles in front of it. If the system detects a potential collision based on closing speeds, it will visually and audibly alert the driver. With **LANE DEPARTURE WARNING**, the system actually reads the lines in the road and will visually and audibly alert drivers if they have strayed into another lane without signaling. These are just two of the forward-thinking ways we help you avoid trouble on the road.

### DURING

Sometimes, however, trouble finds you. If a moderate to severe collision does occur, Equinox is designed to respond instantly. Sensors determine which of the **SIX STANDARD AIRBAGS**,<sup>1</sup> including head-curtain side-impact air bags, deploy. Front pretensioners help reduce slack in the safety belts, while load limiters help limit the forces of the safety belt against your body. And for kids, **LATCH** (Lower Anchors and Top tethers for CHildren) helps you properly secure their car seats in the vehicle.

### AFTER

Should a collision occur, crucial information can be instantly relayed to the OnStar command center via **ONSTAR AUTOMATIC CRASH RESPONSE**.<sup>2</sup> There, trained OnStar Advisors utilize GPS technology to pinpoint your exact location and can request that assistance be sent right away—even if you're unable to respond. It's part of **ONSTAR DIRECTIONS & CONNECTIONS**<sup>2</sup> which is standard for six months, because nothing is more important than your safety.



<sup>1</sup> Always use safety belts and proper child restraints. Children are safer when properly secured in a rear seat. See the Owner's Manual for more information. <sup>2</sup> Visit [onstar.com](http://onstar.com) for coverage map, details and system limitations. Services vary by model and conditions. OnStar acts as a link to existing emergency service providers.





# OVER PROTECTIVE

Deep down, we're all pretty much the same. We love our families and only want what's best for them. So it was natural to incorporate the kind of technologies into Equinox that not only give us peace of mind, but also superior ratings. Like being named a **TOP SAFETY PICK** from the Insurance Institute for Highway Safety (IIHS) in 2010 and 2011. Seems like our engineers were on the right track when they incorporated so many safety features into Equinox. Features such as six air bags,<sup>1</sup> **STABILITRAK® ELECTRONIC STABILITY CONTROL SYSTEM WITH TRACTION CONTROL** to help keep you on the path being steered; **ROLLOVER MITIGATION** to help reduce the risk of a rollover incident; and

four-wheel antilock disc brakes to help maintain steering in hard braking situations by reducing wheel lockup.

Then there's the cabin. You might think of it as your comfort zone, but to our safety engineers it's a steel cage with reinforced roof pillars and **CRUSH ZONES** that helps dissipate energy from a collision away from the occupants.

The value of an available **REAR VISION CAMERA** requires little explanation. Its ability to help you see certain stationary objects while traveling in Reverse at low speeds can be viewed as proof that sometimes being overprotective is a good thing.

<sup>1</sup> Always use safety belts and proper child restraints. Children are safer when properly secured in a rear seat. See the Owner's Manual for more information.

# SPECIFICATIONS

	LS	ILT	2LT	LTZ
<b>EXTERIOR</b>				
Bumpers: Front and rear body-color with charcoal lowers	■	■	■	–
Front and rear body-color with bright lowers	–	–	–	■
Door handles: Body-color	■	■	■	–
Chrome	–	–	–	■
Fog lamps: Front halogen	–	–	■	■
Headlamps: Halogen	■	■	■	–
Halogen, uplevel projector-style	–	–	–	■
Liftgate: Rear, manual with fixed glass	■	■	■	–
Rear, power-programmable with fixed glass	–	–	□	■
Mirrors: Black, manual-folding, power-adjustable	■	–	–	–
Body-color, manual-folding, power-adjustable, heated	–	■	■	–
Chrome, manual-folding, power-adjustable, heated	–	–	–	■
Integrated blind spot mirrors	■	■	■	■
Roof rack: Side rails	–	■	■	■
Center rails	–	–	–	■
<b>ENGINES/CHASSIS</b>				
Engine: ECOTEC 2.4L DOHC Direct Injection 182-hp 4-cylinder	■	■	■	■
3.0L DOHC Direct Injection 264-hp V6	–	□ <sup>1</sup>	□	□
Hill Start Assist: Helps reduce rollback on an incline until vehicle begins moving forward	■	■	■	■
Steering: Power, variable-assist, electric	■	■	■	■
Power, variable-assist, hydraulic	–	□ <sup>2</sup>	□ <sup>2</sup>	□ <sup>2</sup>
Suspension: Front, independent struts. Rear, multilink independent with hydraulic bushings, rear trailing arm links and stabilizer bar	■	■	■	■
Tire Pressure Monitor (excludes spare tire)	■	■	■	■
Transmission: 6-speed automatic with overdrive	■	■	■	■
<b>SAFETY &amp; SECURITY</b>				
Air bags: <sup>3</sup> Driver and front passenger, dual-stage, frontal with Passenger Sensing System; thorax side-impact, seat-mounted, driver and front passenger; head-curtain, side-impact for front and rear outboard seating positions	■	■	■	■
All-wheel drive	□	□	□	□
Brakes: Four-wheel antilock disc (ABS)	■	■	■	■
Door locks: Power-programmable with lockout protection and rear-door child safety locks	■	■	■	■
Forward Collision Alert and Lane Departure Warning	–	–	–	□ <sup>2</sup>
LATCH (Lower Anchors and Top tethers for CHildren) system	■	■	■	■
Lights: Daytime running lamps with automatic exterior lamp control	■	■	■	■
OnStar <sup>4</sup> Directions & Connections (standard for six months), includes Automatic Crash Response	■	■	■	■
StabiliTrak Electronic Stability Control System with Traction Control, Electronic Trailer Sway Control and rollover mitigation	■	■	■	■
Theft-deterrent system: content-theft alarm	■	■	■	■
<b>INTERIOR</b>				
Bluetooth <sup>5</sup> wireless technology <sup>5</sup> for select phones	■	■	■	■
Climate Control: Manual	■	■	–	–
Automatic	–	–	■	■
Driver Convenience Package: Chevrolet MyLink Touch Radio (available Spring 2012), eight-way power driver-seat adjuster and Remote Vehicle Starter System	–	□	■	■

■ STANDARD □ AVAILABLE – NOT AVAILABLE

	LS	ILT	2LT	LTZ
<b>INTERIOR (CONTINUED)</b>				
Driver Information Center (includes compass)	■	■	■	■
Floor mats: Carpeted, front and rear	■	■	■	■
Instrumentation: Speedometer, trip odometer, engine temperature, fuel level and tachometer	■	■	■	■
Steering wheel: Mounted audio and cruise controls	■	–	–	–
Leather-wrapped with mounted audio and cruise controls	–	■	■	■
Tilt and telescoping	■	■	■	■
Memory: Settings for driver seat and exterior mirrors	–	–	–	■
Mirror, inside rearview: Manual day/night	■	■	–	–
Auto-dimming	–	–	■	■
Rear vision camera	–	■	■	■
Sunroof: Power, tilt/sliding, with Express-Open feature	–	□	□	□
Windows: Power with Express-Down feature (all windows) and passenger lockout	■	■	■	■
<b>SEATING</b>				
Front, driver, power lumbar and power height adjuster	■	■	–	–
Front, driver, eight-way power: Includes power fore/aft, up/down, tilt cushion, recline and lumbar	–	□ <sup>6</sup>	■	■
Front and rear, leather-appointed with perforated leather inserts	–	–	□	■
Heated seats: Driver and front passenger	–	–	■	■
Multi-Flex sliding rear seat with 60/40 split-folding seatback and three-position recline	■	■	■	■
<b>AUDIO SYSTEMS</b>				
AM/FM Stereo, CD Player, SiriusXM Satellite Radio <sup>7</sup> with three trial months, Radio Data System (RDS) <sup>8</sup> technology, speed-compensated volume, digital clock and outside temperature displays and auxiliary audio input jack for iPod <sup>9</sup> /MP3 player	■	–	–	–
Color Touch Radio: AM/FM Stereo, CD Player, SiriusXM Radio <sup>7</sup> with three trial months, speed-compensated volume, digital clock and outside temperature displays, auxiliary audio input jack and USB port <sup>9</sup> for iPod <sup>9</sup> /MP3 player, 7-inch diagonal color touch-screen (standard on 2LT and LTZ until Spring 2012)	–	■	■	■
Chevrolet MyLink Touch Radio: <sup>10</sup> AM/FM Stereo, CD Player, SiriusXM Radio <sup>7</sup> with three trial months, speed-compensated volume, digital clock and outside temperature displays, auxiliary audio input jack and USB port <sup>9</sup> for iPod <sup>9</sup> /MP3 player, 7-inch diagonal color touch-screen, smartphone integration, Gracenote <sup>®</sup> database, enhanced voice recognition (available Spring 2012)	–	□ <sup>6</sup>	■	■
Color Touch Radio with Navigation: AM/FM Stereo, CD Player, SiriusXM Radio <sup>7</sup> with three trial months, speed-compensated volume, digital clock and outside temperature displays, auxiliary audio input jack and USB port <sup>9</sup> for iPod <sup>9</sup> /MP3 player, 7-inch diagonal color touch-screen, enhanced navigation	–	–	□	□
Pioneer <sup>®</sup> Premium 8-speaker Sound System, 250 watts with subwoofer and amplifier	–	□ <sup>2</sup>	■	■
SiriusXM Radio <sup>7</sup> with three trial months	■	■	■	■
USB port <sup>9</sup> connectivity	–	■	■	■
<b>WHEELS</b>				
17" aluminum	■	■	■	■
18" chrome-clad aluminum	–	–	□	□
19" chrome-clad aluminum	–	–	–	□ <sup>2</sup>

<sup>1</sup> Requires available Pioneer sound system. <sup>2</sup> Requires available V6 engine. <sup>3</sup> Always use safety belts and the correct restraint for your child's age and size. Even in vehicles equipped with the Passenger Sensing System, children are safer when properly secured in a rear seat in the appropriate infant, child or booster seat. Never place a rear-facing infant restraint in the front seat of any vehicle equipped with a passenger air bag. See the Owner's Manual and child safety seat instructions for more safety information. <sup>4</sup> Visit onstar.com for coverage map, details and system limitations. Services vary by model and conditions. OnStar acts as a link to existing emergency service providers. <sup>5</sup> Go to gm.com/bluetooth to find out which phones are compatible with the vehicle. <sup>6</sup> Requires available Driver Convenience Package. <sup>7</sup> Requires a subscription sold separately by SiriusXM after three-month trial. Available only in the 48 contiguous United States and Washington, D.C. Visit siriusxm.com for details. <sup>8</sup> RDS functions only where stations broadcast RDS information. <sup>9</sup> Not compatible with all devices. <sup>10</sup> Limited availability. Full functionality requires compatible Bluetooth and smartphone. Some devices require USB connectivity. <sup>11</sup> Cargo and load capacity limited by weight and distribution. <sup>12</sup> With available roof rack.

# MAXIMUM CAPACITIES

<b>EPA-ESTIMATED FUEL ECONOMY</b>	2.4L FWD 22 MPG city / 32 highway
	2.4L AWD 20 MPG city / 29 highway
	3.0L FWD 17 MPG city / 24 highway
	3.0L AWD 16 MPG city / 23 highway

<b>FUEL TANK (APPROXIMATE)</b>	18.8 gallons for 4-cylinder / 20.9 for available V6
<b>PASSENGER VOLUME</b>	99.7 cubic feet / seats 5
<b>CARGO VOLUME<sup>11</sup></b>	63.7 cubic feet

# DIMENSIONS



62.9"  
72.5"



112.5"  
187.8"



62.1"  
69.3"<sup>(12)</sup>

# SELECT VEHICLE FEATURES

## EQUINOX LS

- ECOTEC 2.4L DOHC Direct Injection 4-cylinder
- StabiliTrak Electronic Stability Control System with Traction Control and rollover mitigation
- Power steering with tilt and telescoping steering wheel and steering wheel-mounted audio and cruise controls
- Four-wheel antilock disc brakes with Electronic Brake Force Distribution
- Power, manual-folding outside mirrors (black) with integrated blind spot mirrors
- Multi-Flex sliding rear seat with 60/40 split-folding seatback and three-position recline
- Six air bags and Passenger Sensing System<sup>3</sup>
- Compass and outside temperature displays
- Bluetooth wireless technology<sup>5</sup> for select phones

## EQUINOX ILT

- In addition to or replacing LS features, ILT includes:*
- Premium Cloth seats
  - Deep-tinted glass
  - USB port<sup>9</sup> connectivity
  - Leather-wrapped steering wheel with steering wheel-mounted audio and cruise controls
  - Roof rack side rails
  - Power, heated, manual-folding outside mirrors in body-color with integrated blind spot mirrors
  - Rear vision camera

## EQUINOX 2LT

- In addition to or replacing 1LT features, 2LT includes:*
- Heated Premium Cloth front seats
  - Driver seat with eight-way power adjuster
  - Pioneer Premium 8-speaker Sound System, 250 watts
  - Auto-dimming inside rearview mirror
  - Automatic climate control
  - Foglamps

## EQUINOX LTZ

- In addition to or replacing 2LT features, LTZ includes:*
- Perforated leather-appointed seats with heated front seats
  - Memory settings for driver seat and exterior mirrors
  - Body-color bumpers with bright lowers
  - Chrome door handles, exterior mirrors and roof rack side rail inserts
  - Power-programmable liftgate
  - Rear Parking Assist
  - Uplevel, projector style halogen headlamps
  - Enhanced interior lighting

# DEALER-INSTALLED ACCESSORIES PERSONALIZE YOUR EQUINOX AT CHEVY.COM/ACCESSORIES



19" Chrome Wheel



All-Weather Floor Mats, Front and Rear



Chrome Door Handles



Chrome Outside Mirrors



Custom Molded Splash Guards, Front and Rear



Trailer Hitch

# COLORS



Black



Black Granite Metallic<sup>1,2</sup>



Twilight Blue Metallic<sup>2</sup>



Crystal Red Tintcoat<sup>1,2,3</sup>



Mocha Steel Metallic<sup>2</sup>



Gold Mist Metallic



Silver Ice Metallic



Summit White

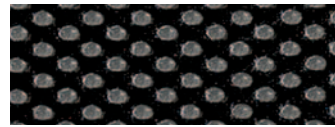
# FABRICS



Jet Black Cloth<sup>4</sup>



Light Titanium-Color Cloth<sup>4</sup>



Jet Black Premium Cloth<sup>5</sup>



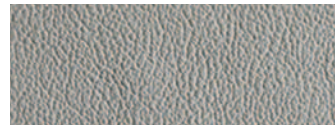
Light Titanium-Color Premium Cloth<sup>5</sup>



Jet Black Leather Appointments<sup>6</sup>



Brownstone Leather Appointments<sup>6</sup>



Light Titanium-Color Leather Appointments<sup>6</sup>

# WHEELS



17" Aluminum Wheel (standard on all models)



18" Chrome-Clad Aluminum Wheel (available on 2LT/LTZ)



19" Chrome-Clad Aluminum Wheel (available on LTZ; requires V6 engine)

<sup>1</sup> Extra-cost color. <sup>2</sup> Available only on LT and LTZ. <sup>3</sup> Interim availability, FWD 4-cylinder models only. <sup>4</sup> Standard on LS. <sup>5</sup> Standard on LT. <sup>6</sup> Standard on LTZ. Available on 2LT.

# IMPORTANT INFORMATION

**100,000-MILE/5-YEAR TRANSFERABLE POWERTRAIN LIMITED WARRANTY.** Every 2012 Chevrolet passenger car, light-duty truck, SUV and crossover comes with a 100,000-mile/5-year (whichever comes first) transferable Powertrain Limited Warranty. Plus, you get 100,000 miles/5 years (whichever comes first) of the 24/7 Roadside Assistance Program, the Courtesy Transportation Program, and much more. See dealer for details.

**NEW VEHICLE LIMITED WARRANTY.** GM vehicles registered in the U.S.A. are covered for 36,000 miles/3 years (whichever comes first). The complete vehicle is covered, including tires, towing to your nearest Chevrolet dealership and cosmetic corrosion resulting from defects. Repairs will be made to correct any vehicle defect, and most warranty repairs will be made at no charge. In addition, rust-through corrosion will be covered for 100,000 miles/6 years (whichever comes first). See dealer for details.

**ENGINES.** Chevrolet products are equipped with engines produced by GM Powertrain or other suppliers to GM worldwide. The engines in Chevrolet products may also be used in other GM makes and models.

**ASSEMBLY.** Chevrolet vehicles and their components are assembled or produced by different operating units of General Motors, its subsidiaries or suppliers to GM worldwide. We sometimes find it necessary to produce Chevrolet vehicles with different or differently sourced components than originally scheduled. Since some options may be unavailable when your vehicle is assembled, we suggest you verify that your vehicle includes the equipment you ordered and that, if there were changes, they are acceptable to you.

**ONSTAR.** OnStar services require vehicle electrical system (including battery), wireless service and GPS satellite signals to be available and operating for features to function properly. OnStar acts as a link to existing emergency service providers. Subscription Service Agreement required. Call 1-888-4ONSTAR (1-888-466-7827) or visit [onstar.com](http://onstar.com) for OnStar Terms and Conditions, Privacy Policy, details and system limitations.

**A NOTE ON CHILD SAFETY.** Always use safety belts and the correct restraint for your child's age and size. Even in vehicles equipped with the Passenger Sensing System, children are safer when properly secured in a rear seat in the appropriate infant, child or booster seat. Never place a rear-facing infant restraint in the front seat of any vehicle equipped with a passenger air bag. See the Owner's Manual and child safety seat instructions for more safety information.

**IMPORTANT WORDS ABOUT THIS CATALOG.** We have tried to make this catalog comprehensive and factual. We reserve the right, however, to make changes at any time, without notice, in prices, colors, materials, equipment, specifications, models and availability. Specifications, dimensions, measurements, ratings and other numbers in this catalog and other printed materials provided at the dealership or affixed to vehicles are approximations based upon design and engineering drawings, prototypes and laboratory tests. Your vehicle may differ due to variations in manufacture and equipment. Since some information may have been updated since the time of printing, please check with your Chevrolet dealer for complete details. Chevrolet reserves the right to lengthen or shorten the model year for any product for any reason or to start and end model years at different times. Certain vehicle features may lose their usefulness over time due to obsolescence from technological changes. Unless otherwise noted, all claims based on GM Compact Crossover segment and latest available competitive information. Excludes other GM vehicles.

**FLEET ORDERS.** Some standard content may be deleted on fleet orders. See dealer for details.

**OWNER SERVICES.** Chevrolet is committed to enhancing the ownership experience through a wide array of programs. For more information about 24-hour roadside assistance, courtesy transportation, customer assistance, Chevrolet safety, GM Mobility, the Chevrolet Owner Center, marketing and incentives, plus services for GM card members, visit [chevy.com](http://chevy.com).

**GMMOBILITY.COM.** (1-800-323-9935). GM Mobility™ offers financial assistance for eligible adaptive equipment to make automotive travel easier for persons with disabilities or special transportation needs. To learn more about special GM Mobility offers, visit [gmmobility.com](http://gmmobility.com).

**CHEVROLET OWNER CENTER (GMOWNERCENTER.COM/CHEVY).** Register your vehicle with the Chevrolet Owner Center, and receive benefits such as online access to your vehicle Owner's Manual, maintenance schedule reminders, service history tracking, warranty and service information, safety information, special offers and privileges, and news and events.

**GMCARDMEMBERSERVICES.COM.** Did you know about the family of reward credit cards that can help you get a great deal on a new GM car, light-duty truck, SUV or crossover? With a GM reward card, you accrue earnings on every credit card purchase to use toward the purchase or lease of an eligible new GM vehicle. With three cards to choose from, you're sure to find one that suits you best.

GM, the GM Logo, Chevrolet, the Chevrolet Logo, and the slogans, emblems, vehicle model names, vehicle body designs and other marks appearing in this catalog are the trademarks and/or service marks of General Motors, its subsidiaries, affiliates or licensors. ©2011 OnStar. All rights reserved. SiriusXM and all related marks and logos are trademarks of SiriusXM Radio Inc. and its subsidiaries. The Bluetooth word mark is a registered trademark owned by Bluetooth SIG, Inc., and any use of such mark by Chevrolet is under license. ©2011 General Motors. All rights reserved.

## OWNERSHIP EXTRAS



[chevy.com/warranty](http://chevy.com/warranty)



ACCESSORIES

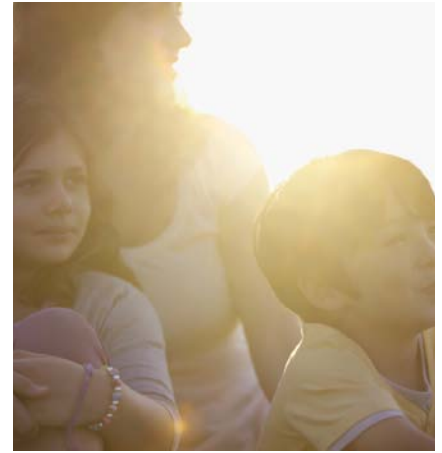
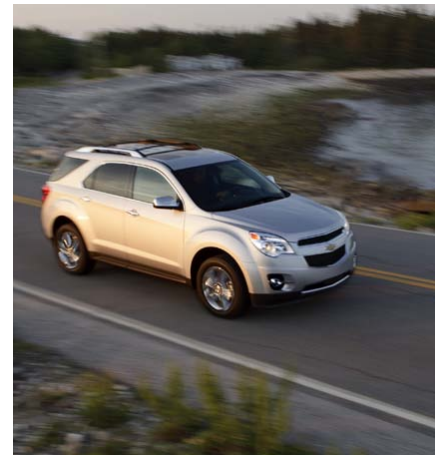
[chevy.com/accessories](http://chevy.com/accessories)



[onstar.com](http://onstar.com)



[siriusxm.com](http://siriusxm.com)





**Chevy Runs Deep**