

TECHNICAL INFORMATION

ROSEMONT THEATRE
5400 N. RIVER ROAD
ROSEMONT, IL 60018
(847)671-5100 FAX (847)671-6405
rosemonttheatre@rosemont.com

Executive Director	Harry Pappas		
General Manager	Ron Stern	Ext 108	ronstern@rosemont.com
Administrative Assistant	Sandee Greene	Ext 109	sandeegreene@rosemont.com
Finance	Keith Krumwiede	Ext 106	keithk@rosemont.com
Operations Manager	Ken Lennstrom	Ext 110	kenlennstrom@rosemont.com

ALL TECHNICAL ADVANCES DONE THROUGH RON STERN EXT. 108

- A. SEATING: MAIN FLOOR 2,240
BALCONY 2,080
PIT 92
TOTAL 4,412(Less Production Kills)
- B. STAGE: PROSCENIUM OPENING: 60 ft. WIDE x 40ft. HIGH
SMOKE POCKET TO BACK WALL: 60 ft.
SMOKE POCKET TO LIP OF APRON: 4 ft.
CENTER LINE TO STAGE RIGHT: 49 ft.
CENTER LINE TO STAGE LEFT: 45 ft.
PIT DIMENSIONS: 56ft.WIDEx15ft.DEEP,CONCAVE
HEIGHT OF GRID FROM STAGE FLOOR: 75 ft.
LINE SET TRAVEL HEIGHT:65ft.
NUMBER OF LINE SETS: 66 (SEE HANGING PLOT)
ARBOR CAPACITY: 1,800 lbs.
TRUSS BATON LENGTH: 78 ft.
GRIDE TYPE: SAFETY GRATES

RIGGING UPSTAGE OF PROSCENIUM: ON WELLS ONLY
 WELLS AT CENTER: 16 FT., 32 FT., LEFT AND RIGHT
 GRID RUNS ALL THE WAY TO THE PROSCENIUM
 HOUSE HAS 50 SPOT WHEELS
 HOUSE HAS PIN RAIL BOTH STAGE LEFT AND RIGHT
 FLY SYSTEM OPERATES FROM STAGE LEVEL

- C. LOADING: 3 TRUCK LOADING BAYS AT STAGE LEVEL
 *LOADING DOOR DIMENSIONS: 10w X 12h
- D. ELECTRICS: IN HOUSE DIMMING 654 2.4k STRAND DIMMERS
 IN HOUSE DMX COMPATIBLE
 HOUSE HAS SMALL QUANTITY OF LEKOS; PAR-64s;
 FRESNELS; CYCS; & GROUND ROW LIGHTS
 EVERYTHING IS STAGE PIN COMPATIBLE
 HOUSE CONSOLE IS LIGHT PALETTE 90 AND
 LEPRICON CUE-STACK 48
- 1st ELECTRIC: LINE SET #5: 4'6" UPSTAGE OF 0'0"
 49 CIRCUITS
- 2nd ELECTRIC: LINE SET #32; 18'6" UPSTAGE OF 0'0"
 49 CIRCUITS
- 3rd ELECTRIC: LINE SET #62; 34'6" UPSTAGE OF 0'0"
 49 CIRCUITS

CATWALKS:	<u>THROW DISTANCE</u>	<u>ACTUAL DISTANCE</u>
1 st :	49 FEET FROM 0'0"	47 FEET FLOOR TO STAGE
2 nd :	57 FEET FROM 0'0"	48 FEET TO MAIN FLOOR
3 rd :	71 FEET FROM 0'0"	48 FEET TO MAIN FLOOR
4 th :	91 FEET FROM 0'0"	44 FEET TO MAIN FLOOR

1st: 29 CIRCUITS

2nd: 51 CIRCUITS

3rd: 83 CIRCUITS

4th: 15 CIRCUITS

SPOTLIGHT THROW 87 FEET TO 0'0" 4 LYCIAN 1275 SUPER 1.2

BALCONY RAIL 92 FEET TO 0'0" 57 CIRCUITS

STAGE RIGHT AND LEFT BOX BOOMS 60' TO

0'0" 23 CIRC.

*330 OF CONTROL SNAKE IS REQUIRED

MASTER ELECTRICIAN: THOMAS LEE HERRMANN

E. POWER: LIGHTING

TOTAL AVAILABLE 300 KVA 800 AMPS

DIFFERENT DISCONNECTS TO TAP INTO

ARE 800 AMP 200 AMP 100 AMP BUT STILL A TOTAL OF
800 AMPS

LOCATED ON STAGE RIGHT

SOUND A SEPARATE SERVICE AND TRANSFORMER

PARALLEL 200 AMPS

BOTH STAGE LEFT AND STAGE RIGHT

ADDITIONAL SERVICES ARE LOCATED ON THE LOADING
DOCK TO SERVICE BUS POWER AND TELEVISION TRUCKS

F: SOUND: 200 AMPS ISOLATED WITH IN 60 FEET STAGE RIGHT OF THE
PROSCENIUM OPENING OR 9 FEET STAGE LEFT OF THE
OPENING (SAME SERVICE WITH 2 POSSIBLE TIE INS)

CENTER CLUSTER: UPPER RING 4 APOGEE 3X3
LOWER RING 4 APOGEE AE-8
SUB WOFFER 2 AE-10

FRONT FILL: 10 JBL CONTROL-1s

UNDER BALCONY: 6 APOGEE AE-2

UPPER BALCONY: 5 APOGEE AE-5s
ALL POWERED BY CROWN AMPLIFICATION

HOUSE HAS A 2 CHANNEL CLEAR-COM SYSTEM
WITH NUMEROUS STATIONS THROUGHOUT

70 VOLT LOBBY & DRESSING ROOM SOUND SYSTEM

- HOUSE MIX IS 85 FEET, HOUSE LEFT OF CENTER
- 250 FEET OF SNAKE NEEDED FOR HOUSE MIX
- 350 FEET OF SNAKE NEEDED FOR CONTROL BOOTH

HOUSE USES INFRARED HEARING IMPAIRED SYSTEM TIES IN
TO HOUSE SYSTEMS. CAN BE MADE FROM FOH MIX OR
FROM THE CONTROL BOOTH

- NO STACKING OF SOUND INSIDE THE PROSCENIUM

G. WARDROBE: HOUSE HAS WARDROBE AREA DOWNSTAIRS BELOW
DRESSING ROOMS.

HOUSE HAS 3 WASHERS AND 3 DRYERS
THERE IS ALSO A DEEP SINK IN THIS AREA
THERE IS PLENTY OF POWER AND ROAD BOX ACCESS

THERE ARE 12 DRESSING ROOMS. 9 CONTAIN SHOWER,
TOILET, AND SINK.

THERE ARE TWO CHORUS ROOMS. EACH CONTAINS
TOILET, SHOWER AND 4 SINKS.

THERE IS A SEPARATE PRODUCTION OFFICE:

PRODUCTION PHONE NOS. (847)671-6430,6431

PRODUCTION FAX NO. (847)671-6432

PROMOTER PHONE NO. (847)671-6433

THERE IS A CROSSOVER EITHER UPSTAGE OF CURTAIN OR THROUGH BASEMENT. THE BASEMENT HAS ADEQUATE ROOM FOR STORAGE, CATERING, WARDROBE OR JUST ABOUT ANYTHING ELSE. DIMENSIONS: 264 X 45

ROSEMONT THEATRE
5400 N. RIVER ROAD
ROSEMONT, IL 60018
PHONE: (847) 671-5100
FAX: (847) 671-6405

ROSEMONT THEATRE HOUSE LIGHTING EQUIPMENT:

DIMMING: 654 STRAND DMX-512 DIMMERS

CONTROL: LEPRECON LP-2000/48 DMX CONSOLE

113-PAR 64 INSTRUMENTS (ASSORTED LAMPS)

-4 EA. SR & SL BOOMS

-4 EA. HUNG AS WORKLIGHTS US

-32 EA. HUNG ON CATWALK #2 (APPROX. 30" APART)

-OTHER 73 ARE STORED (BY CATWALKS OR IN BASEMENT)

16-ALTMAN 10" FRESNELS

4-ALTMAN 6" FRESNELS

4-6" x 16 LEKOS (2 EA. SL & SR BOOMS)

15-STRAND 40° LEKOS

17-STRAND 20° LEKOS

1-STRAND 30° LEKO

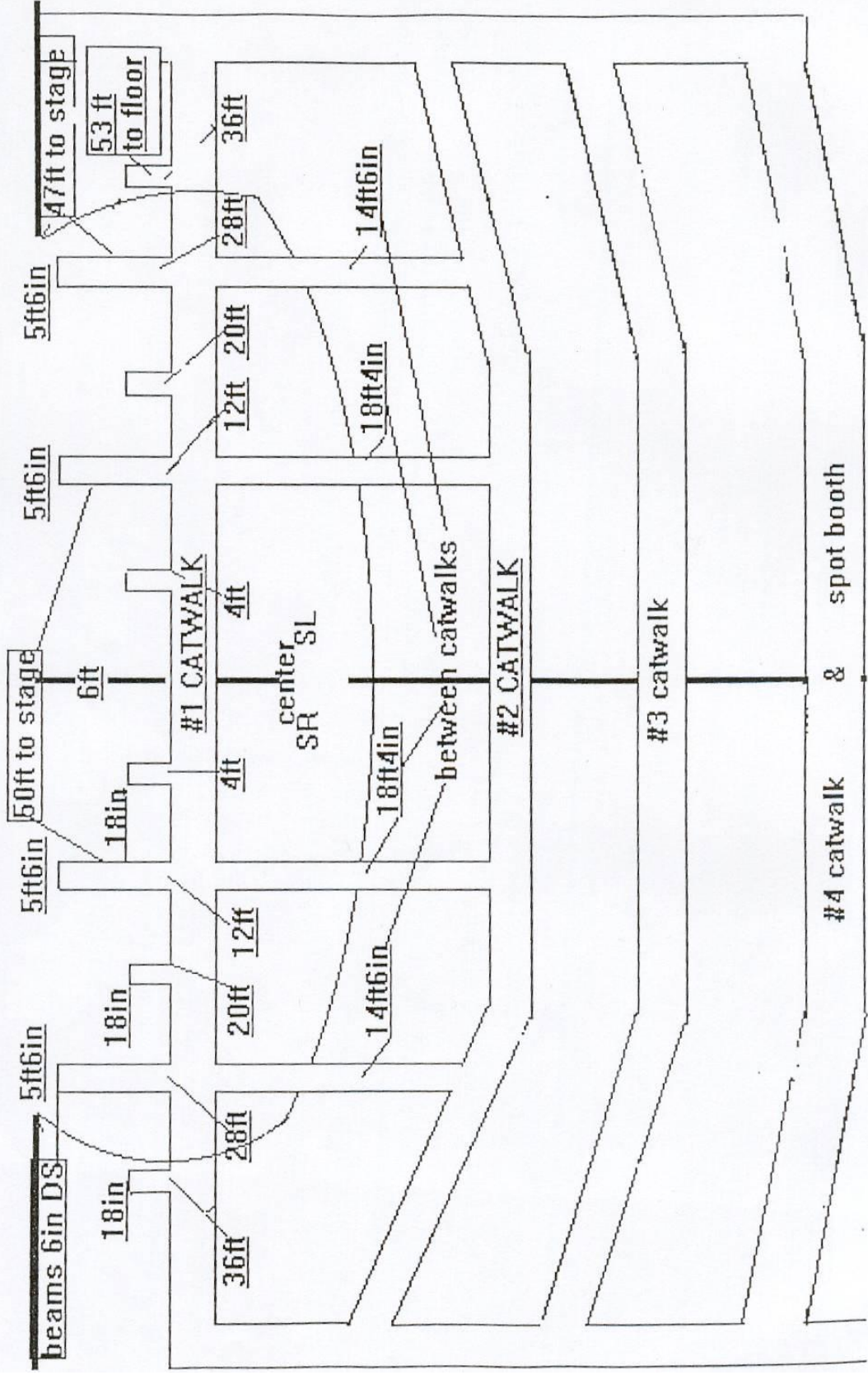
20-BERKEY 2 CELL 1K CYCS

9-10° LEKOS

4-LYCIANS 1275 FOLLOWSPOTS

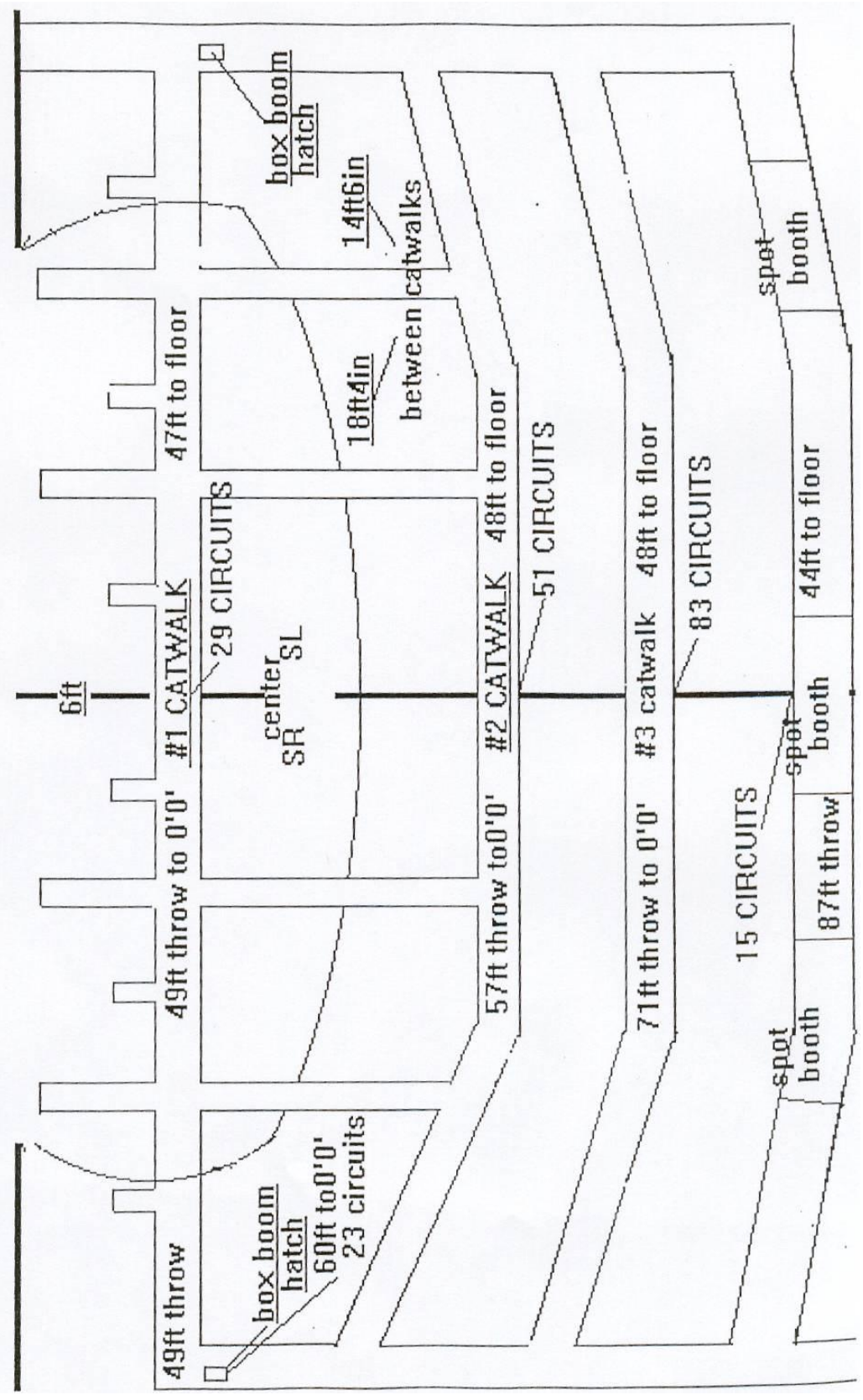
DOWNSTAGE RIGGING

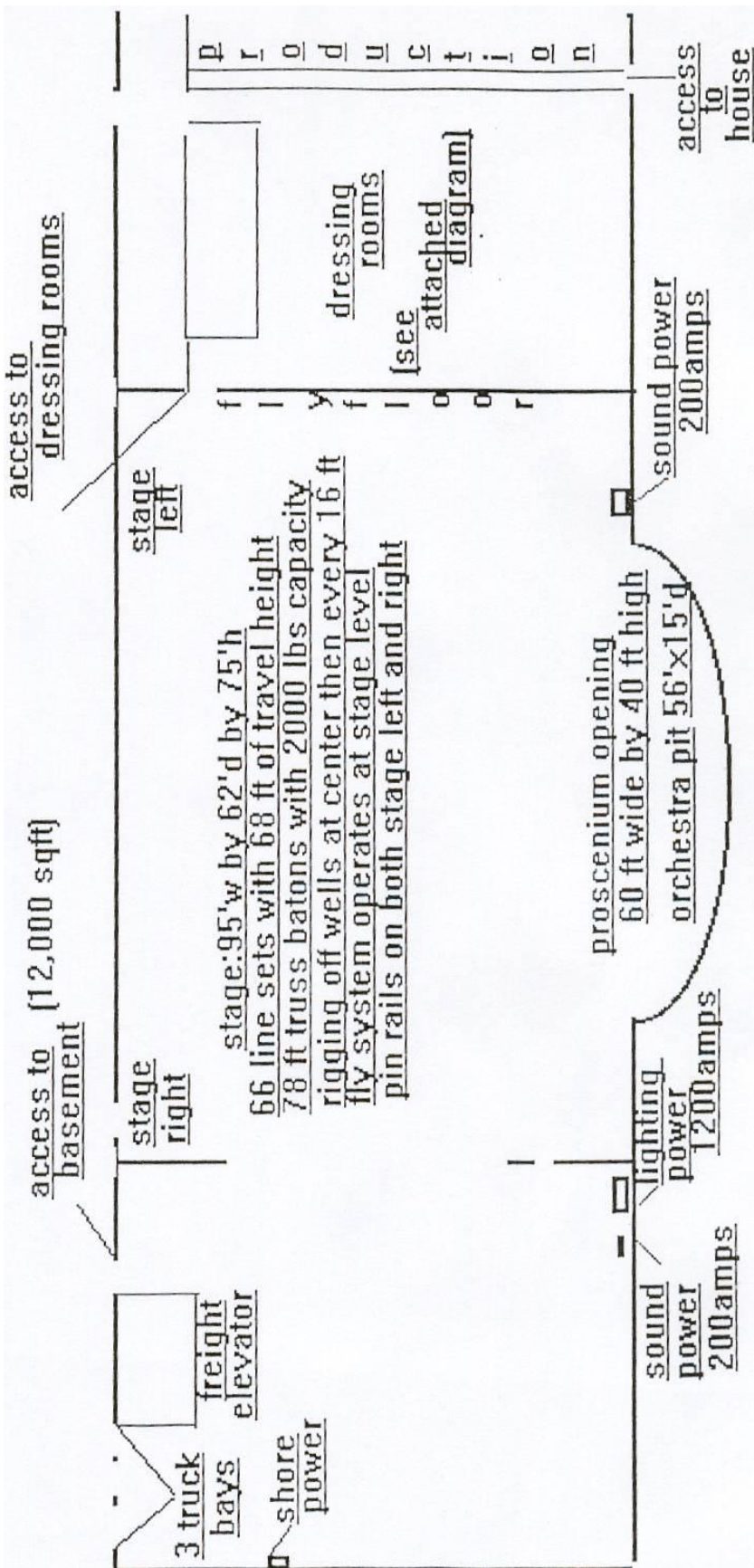
proscenium opening 60ft wall to wall inside theatre at stage 100ft



LIGHTING

proscenium opening 60ft wall to wall inside theatre at stage 100ft

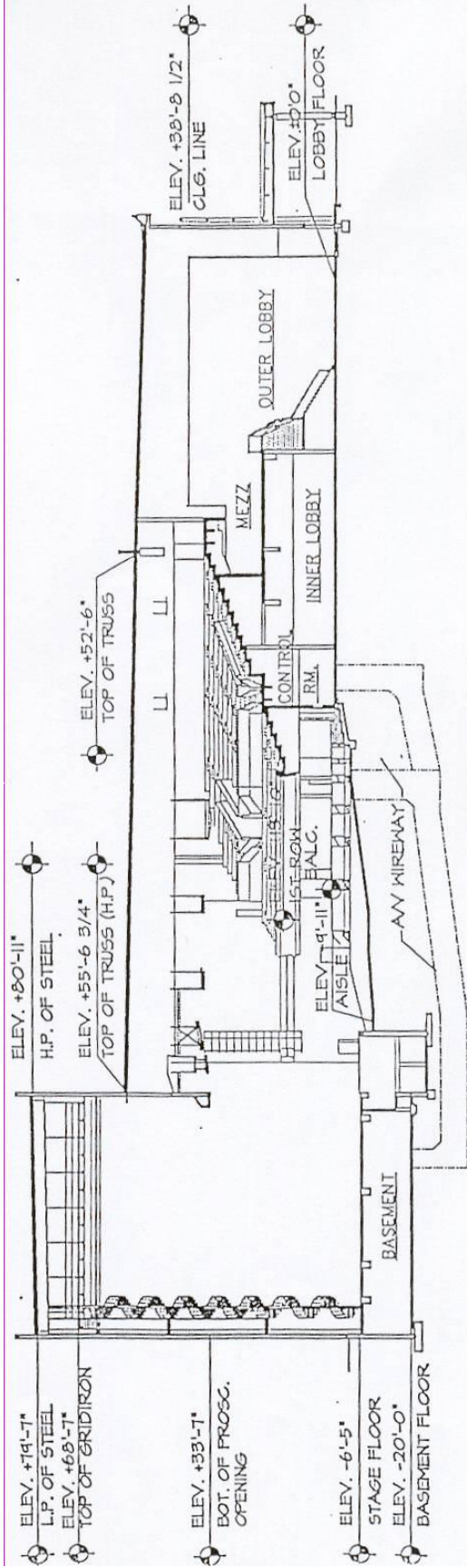




ROSEMONT THEATRE

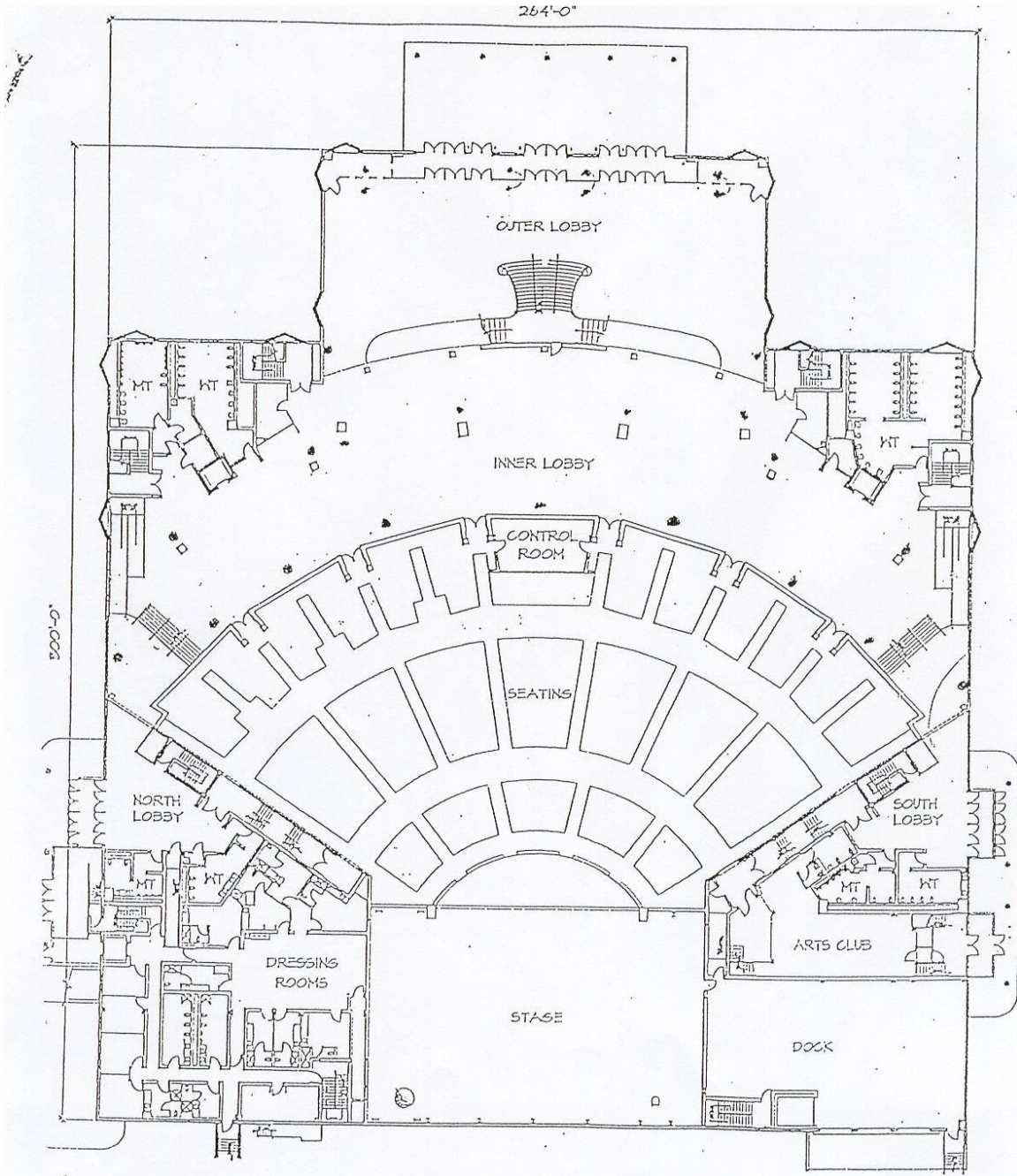
	DIST.	SHOW	HOUSE	SHOW		
PIPE	0'00"	DIST	USE	USE	NOTES	WGT
1	1' 6"		TEASER			
2	2' 6"		MAIN			
3	3' 6"		G.P.			
4	4' 0"		G.P.			
5	4' 6"		1ST ELEC.			
6	5' 0"		G.P.			
7	5' 6"		G.P.			
8	6' 0"		G.P.			
9	6' 6"		G.P.			
10	7' 0"		BORDER			
11	7' 6"		LEGS			
12	8' 0"		G.P.			
13	8' 6"		G.P.			
14	9' 0"		G.P.			
15	9' 6"		G.P.			
16	10' 0"		G.P.			
17	10' 6"		G.P.			
18	11' 0"		G.P.			
19	11' 6"		G.P.			
20	12' 0"		BORDER			
21	12' 6"		LEGS			
22	13' 0"		G.P.			
23	13' 6"		G.P.			
24	14' 0"		G.P.			
25	14' 6"		G.P.			
26	15' 0"		G.P.			
27	15' 6"		G.P.			
28	16' 0"		G.P.			
29	16' 6"		G.P.			
30	17' 0"		BORDER			

	DIST	SHOW	HOUSE	SHOW		
PIPE	0' 0"	DIST	USE	USE	NOTES	WGT
31	17' 6"		LEGS			
32	18' 6"		2ND ELEC.			
33	19' 0"		G.P.			
34	19' 6"		G.P.			
35	20' 0"		G.P.			
36	20' 6"		BORDER			
37	21' 0"		G.P.			
38	21' 6"		TRAVELER			
39	22' 0"		G.P.			
40	22' 6"		G.P.			
41	23' 0"		G.P.			
42	23' 6"		G.P.			
43	24' 0"		G.P.			
44	24' 6"		G.P.			
45	25' 0"		G.P.			
46	25' 6"		BORDER			
47	26' 0"		LEGS			
48	26' 6"		G.P.			
49	27' 0"		G.P.			
50	27' 6"		G.P.			
51	28' 0"		G.P.			
52	29' 0"		G.P.			
53	30' 0"		G.P.			
54	30' 6"		G.P.			
55	31' 0"		G.P.			
56	31' 6"		G.P.			
57	NONE					
58	32' 6"		BORDER			
59	NONE					
60	33' 6"		LEGS			



TYPICAL SECTION

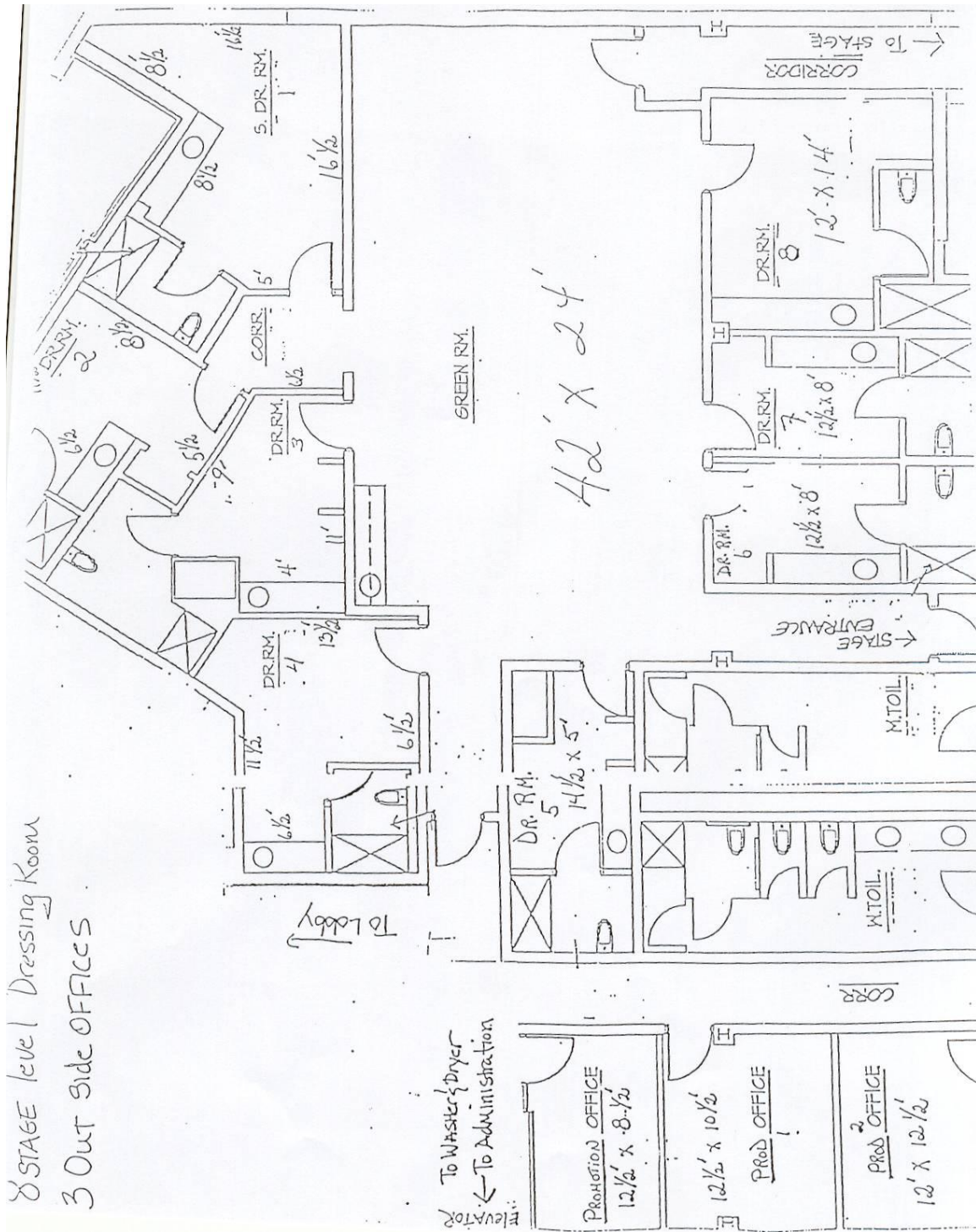
SCALE: 1" = 40'-0"



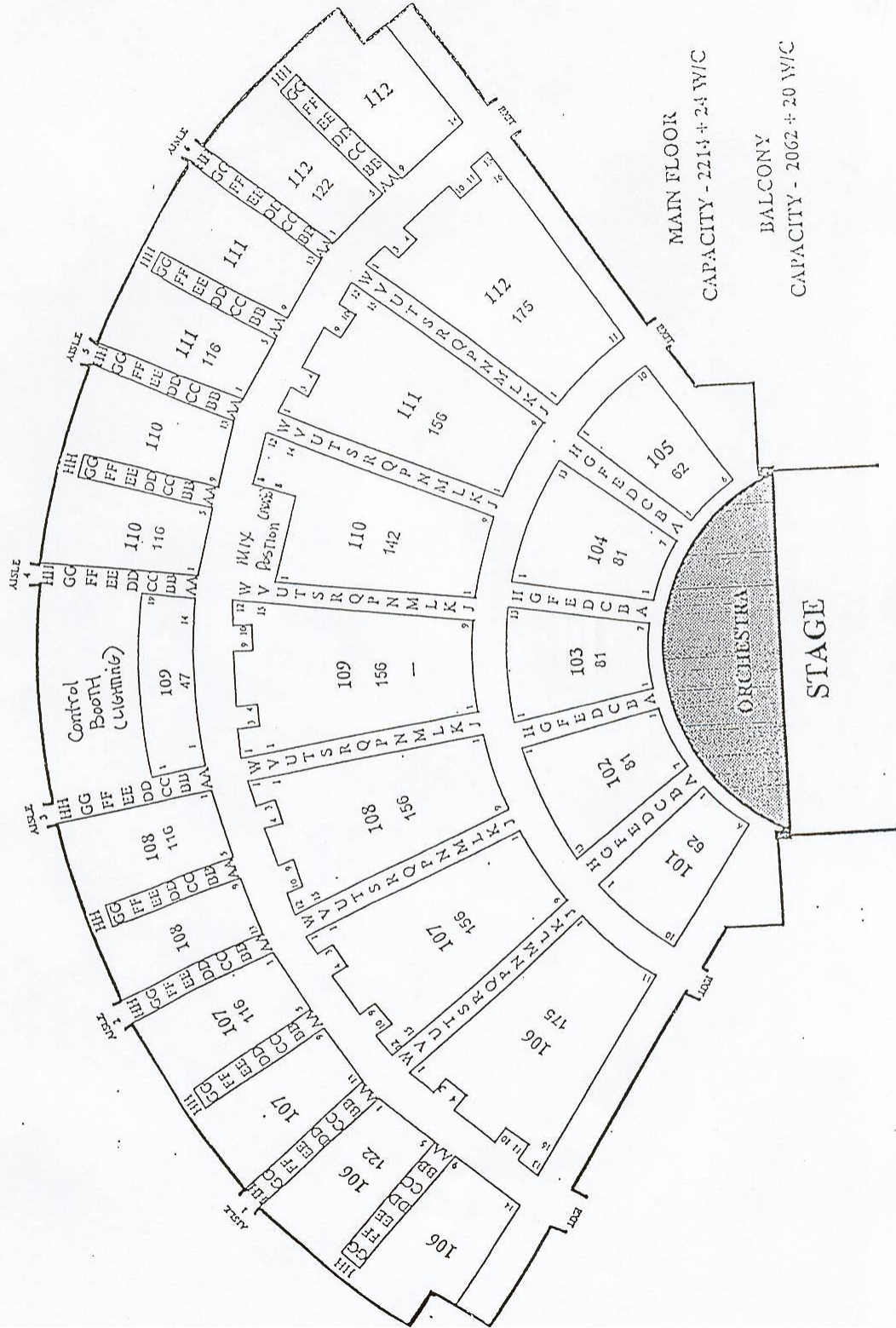
MAIN LEVEL PLAN

SCALE: 1" = 40'-0"

8 STAGE level Dressing Room
 3 Out Side OFFICES

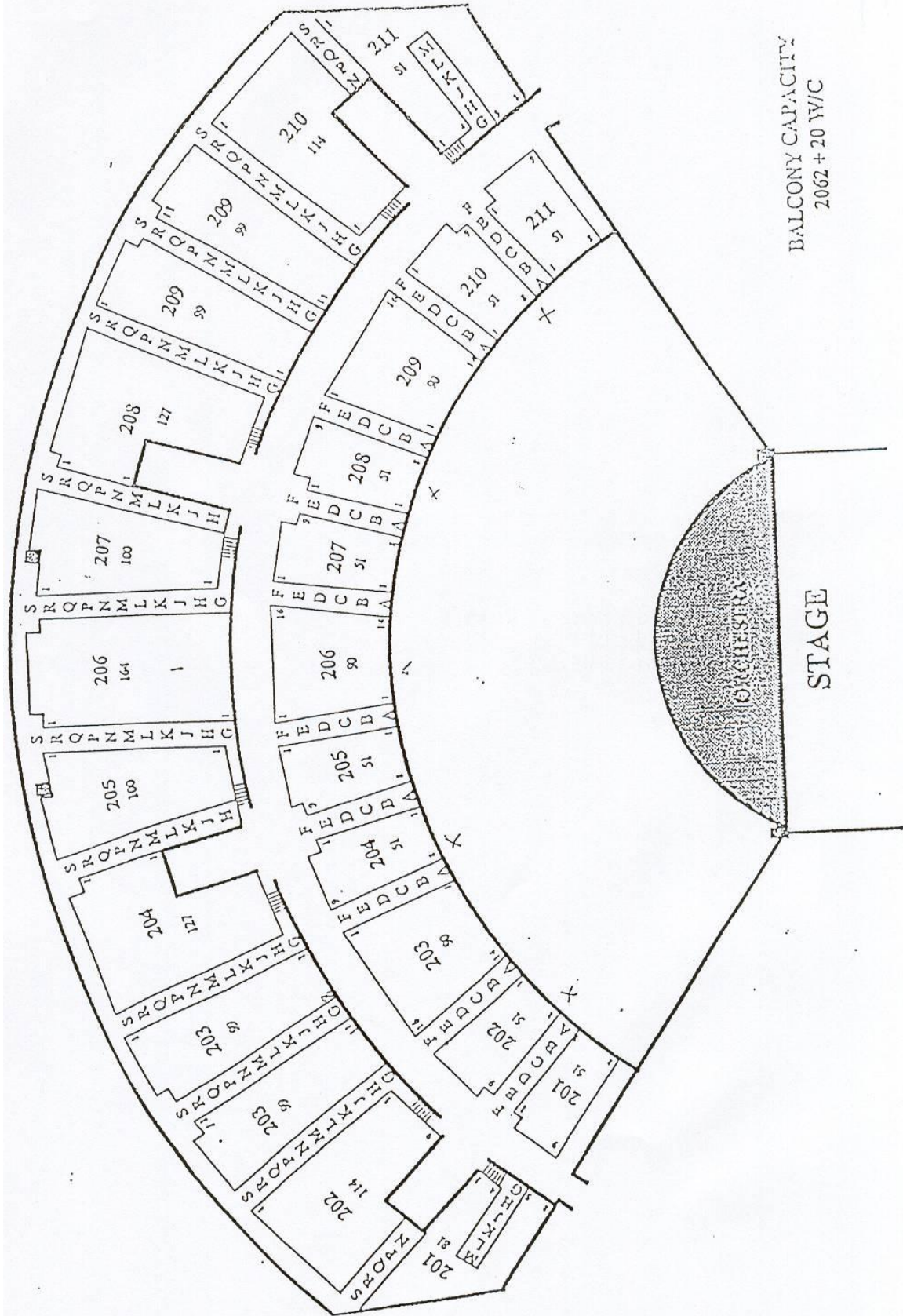


ROSEMONT THEATRE



MAIN FLOOR
CAPACITY - 2213 + 24 W/C

BALCONY
CAPACITY - 2062 + 20 W/C



BALCONY CAPACITY
2062 + 20 W/C

ROSEMONT THEATER
Rosemont, Illinois

Page 1 of 3

HOUSE SOUND EQUIPMENT INVENTORY
AS OF JANUARY, 2000

Contact: Jim Oakes

Pager: 847-225-0352
Home: 847-470-1612
Email: OJames5@aol.com

House Sound Power

200 Amps TOTAL Isolated Power
Standard CamLocs in; can use show tails if necessary
Reverse Ground and Neutral, turn-arounds available
Main Panels DSR and DSL, e.g. power can be pulled either Stage Right or Stage Left or split to both sides
if total draw does not exceed 200amps
50' Two Ought feeder

FOH Mix Position Power:

2 20 Amp, 110 Volt circuits
circuits are isolated for sound use but are NOT on the same transformer as main power

Front of House Mix Position:

Yamaha PM 4000 48 channels in, 4 stereo in, 8 aux, 8 matrix
Portable Double-wide House Effects Rack w/:

- 1 single cd Tascam CD401
- 1 single cassette Tascam 112R
- 2 Klark Technic DN 360 Stereo EQ's
- 2 Klark Technic DN 405 Parametric EQ's
- 2 DBX 166 Compressor/Limiter
- R 130 1/3octave Real Time Analyzer
- 3 Yamaha 990 SPX Processors

Patch Bay
99 Satalite Muzak stations

Portable Components:

6 Shure DFR 11 equalizers
4 Shure DP 11 equalizers
Shure SP16A Distro Amp
Shure M267 Four Channel Mixer
Pro Co 8 channel Isolation Transformer
2 Whirlwind Direct Boxes

Cable:

In-house Main Snake 48 sends x 12 returns
8 channel XLR cross-stage snake 4 male & 4 female XLR's

ROSEMONT THEATER
Rosemont, Illinois

Page 2 of 3

8 Isolated Tie Lines from mix to booth
4 75' 6 channel sub-snakes
3 50' 8 channel sub-snakes
50 25' XLR cable
50 50' XLR cable
various lengths Neutrek NL4
various a/c cable and quad boxes

House Speaker System:

Center Cluster:

4 Apogee 3x3 upper cabinets
4 Apogee AE 8 under cabinets
2 Apogee AE 10 sub-woofer cabinets

Front Fill:

10 JBL Control 1 cabinets

Delay:

6 Apogee AE 2x2 cabinets for underbalcony fill
5 Apogee AE 5 cabinets for balcony fill

Stage Monitors:

4 Klipsch KSM 15's
stage monitors run off aux's at FOH

All speakers powered by Crown Amplifiers

Room has been Correct EQ'ed w/white 4700 EQ's

Booth Equipment:

3 Aphex 323A Compressor/Limiter's
Panasonic 3700 DAT
Clear Com SB-412A Main Station
Clear Com Remote Station
6 single channel clearcom stations
18 double channel clearcom stations
Sennheiser Infrared Sound System
3 TOA Digital Delays for House System

Microphones:

Shure:

5 SM 57
2 SM 58
2 SM Beta 58
2 SM Beta 87
2 SM 99 podium
4 U4D-UA UHF wireless lav receivers---4 units/ dual inputs
3 303 omni Lavs
2 184 Lavs
2 93 omni Lavs
8 Lav beltpacks
4 SM 58 Wireless Handhelds

ROSEMONT THEATER
Rosemont, Illinois

Page 3 of 3

Sennheiser:

- 4 MKEII omni Lavs
- 2 104 cardioid Lavs

Sony:

- 2 ECM 77B Lavs

3 In-house Cameras

- 1 Fixed to stage
 - 1 w/ pan, tilt, zoom, and iris control
 - 1 Infrared
- 1 monitor in booth
1 portable monitor

ROSEMONT THEATRE LABOR RATES

AS OF 03/13/2002

TEAMSTER RATES

STEW REG	\$38.05
STEW PREM	\$50.86
STEW DOUBLE	\$63.65
HAND REG	\$37.37
HAND PREM	\$49.86
HAND DOUBLE	\$62.34

BENEFITS AND PAYROLL TAXES ARE INCLUDED ABOVE

WARDROBE RATES

STEW REG	\$26.17
STEW PREM	\$39.27
STEW DOUBLE	\$52.34
STEW SHOW	\$84.66
DRESSER REG	\$25.61
DRESSER PREM	\$38.42
DRESSER DOUBLE	\$51.22
DRESSER SHOW	\$83.56

BENEFITS: 8% VACATION PAY, 12% ANNUITY

ELECTRICIAN RATES

REGULAR	\$31.65
OVERTIME	\$47.48

BENEFITS: 38% OF WAGES

PROJECTIONIST RATES

REGULAR	\$29.50
OVERTIME	\$44.25
DOUBLE TIME	\$59.00

BENEFITS: 20% OF WAGES

STAGEHAND RATES

	<i>HOUSE</i>	<i>INDUSTRIAL</i>	<i>LEGIT</i>
STEW REG	\$32.58	\$34.00	\$36.27
STEW PREM	\$48.87	\$51.00	\$54.40
STEW DOUBLE	\$65.16	\$68.00	\$72.54
STEW SHOW	\$133.00	\$130.00	\$157.18
HEAD REG	\$31.58	\$33.00	\$35.27
HEAD PREM	\$47.37	\$49.50	\$52.90
HEAD DOUBLE	\$63.16	\$66.00	\$70.54
HEAD SHOW	\$133.00	\$130.00	\$157.18
HAND REG	\$28.98	\$32.00	\$30.22
HAND PREM	\$43.47	\$48.00	\$45.33
HAND DOUBLE	\$57.96	\$64.00	\$60.44
HAND SHOW	\$119.19	\$126.00	\$120.26
SPOT REG	N/A	N/A	\$32.85
SPOT PREM	N/A	N/A	\$49.28
SPOT DOUBLE	N/A	N/A	\$65.70
SPOT SHOW	\$123.97	N/A	\$137.00

BENEFITS: 7% VACATION PAY, 24% ANNUITY, PENSION, HEALTH & WELFARE 7% VACATION PAY, 26% ANNUITY, PENSION, HEALTH & WELFARE 7% VACATION PAY, 26% ANNUITY, PENSION, HEALTH & WELFARE

CAMERA OPERATORS

VIDEO ENGINEER REG.	\$44.00
CAMERA OPERATOR REG.	\$42.00

NOTE: ALL WAGES ARE SUBJECT TO A PAYROLL TAX OF 24%