

KODIAK MARINE

PARTS BOOK



6.2LS3 410 HP
Aluminum LS3

KODIAK MARINE DIVISION

10800 S.W. Herman Road, Tualatin, OR 97062
Phone: 503-692-5012 Fax: 503-692-1098
email: kempower@hotmail.com



KODIAK



181J-00 Base 3.0L

(Requires 12 ¾ flywheel for older 181's)

The exhaust valve seat inserts in the cylinder head of the 3.0L marine engine provide superb durability.

Supplied with water pump, coil, distributor and 14" flywheel.



262J-00 Base V6

262J-OE Base V6 w/intake, carb, fuel, and electric.

The **Vortec** 262 marine engine features hydraulic roller valve lifters and roller rocker arms for smooth, quiet and efficient operation

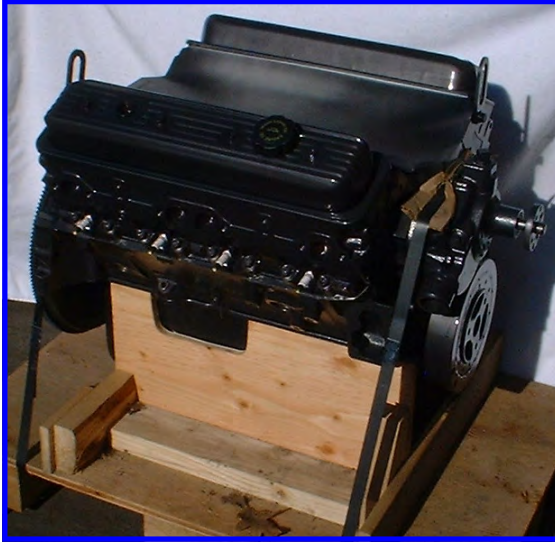
Supplied with water pump, two barrel intake and 14" flywheel.

Requires a electric fuel pump.

BASE ENGINES

KODIAK

BASE ENGINES



350J-00 Base V8 with intake.

350J-OE Base V8 with fuel and electrical.

Base engines are supplied with
water pump, and flywheel.

Requires an electric fuel pump.

All base engines have a 90 day warranty.

KODIAK



CLOSED COOLED KIT

This kit allows you to run antifreeze through the exhaust manifolds, closing off the exhaust manifolds from the outside water. Kit includes all necessary hoses and fittings.

KM2000CC - Thermostat Block Only

KM2000CC-V6 All 4.3L Engines

KM2000CC-SB 5.0L and 5.7L Engines

KM2000CC-BB 454 Engines



KM2034 Priority Thermostat Housing Assembly



OVER FLOW TANK KIT - KM2136
KM2136-81 - Small



FUEL COOLER
PC9068 5.7L
KM8050 6.0L



OIL COOLER
KM7832 5.7L/383



OIL COOLER
KM2177RW-8.1 8.1L
KM2177RW

CLOSED COOLING

KODIAK ENGINES

COOLING SYSTEMS



HEAT EXCHANGER KITS

- HE262BFI 4.3L BFI Only
 - HE350BFI 5.7L BFI Only
 - HE350PFIA 4.3L/5.7L J/TBI
 - HE350PFIA-PFI 5.7L PFI Only
 - HE454PFIA 454 JP/J
 - HE502PFIA 502 JP/J
 - HE496PFIA 8.1L JP
- NOTE: JP=Port Fuel
TBI=Throttle Body
J=Carbureted

HEAT EXCHANGERS ONLY

- HE350PFI 4.3L/5.7L 3"
- HE454PFI 454/502 4"
- HE496PFI 8.1L
- HE 6.0L/LQ4 6.0L Heat Exchanger
- KM10499 6.2LS3
- KM10450 6.2LSA



REMOTE OIL FILTER KIT

- KM350SOK - Single Filter Kit
- KM496SOK - Single Filter Kit



- 10-24504-03 - 6.2L Intercooler Circulating Pump



HEAT EXCHANGER MOUNTS

- KH351L 4.3L/5.7L J/TBI
- KH351R 4.3L/5.7L J/TBI
- KM2158R 5.7L Port Fuel
- KM2158L 5.7L Port Fuel
- KH454L 454
- KH454R 454
- PC7322 8.1L EFI
- 3RM Rubber Mount 3" 4.3L/5.7L
- 4RM Rubber Mount 4" 454/502/8.1L
- PC 7322 8.1L Bracket Heat Exchanger
- KM 7603 Rear Mount - 6.0L Bracket
- KM 7604 Front Mount - 6.0L Bracket
- KM7515 5.7L Mount



WATER PUMPS

- 12523504 3.0L 98-00
- 12529508 4.3L 90-99
- 12529508 5.7L 91-99
- 12527762 454 91-99
- 12527762 502 91-00
- 88893906 8.1L 01
- 88894290 6.0L 03

KODIAK ENGINES



- KM262A-4** V6 4" Exhaust Manifold Kit Painted
- KM3502A** 5.7L 4.0" Exhaust Manifold Kit Painted
- KM4542A** 454/502/8.1L 4.0" Exhaust Manifold Kit Painted
- KM3502A-P** 5.7L 4.0" Exhaust Manifold Kit Polished
- KM4542A-P** 454/502/8.1L 4.0" Exhaust Manifold Kit Polished
- KM3502A-ANDZ** 5.7L 4.0" Exhaust Manifold Kit Anodized
- KM4542A-ANDZ** 454/502/8.1L 4.0" Exhaust Manifold Kit Anodized
- KM7590A** 6.0L/6.2L LSA & LS3 Manifold kit

Manifolds Only

- KM262-4** V6 4.0" Painted
- KM3502** 5.7L 4.0" Painted
- KM3502-P** 5.7L 4.0" Polished
- KM3502-ANDZ** 5.7L 4.0" Anodized
- KM4542** 454/502/8.1L 4.0" Painted
- KM4542-P** 454/502/8.1L 4.0" Polished
- KM4542-ANDZ** 454/502/8.1L 4.0" Anodized
- KM7590** 6.0L Manifold

Risers Only

- KM4192** 5.7L/454/502/8.1L/6.2L LSA & LS3 4.0" Painted
- KM4192-P** 5.7L/454/502/8.1L 4.0" Polished
- KM4192-ANDZ** 5.7L/454/502/8.1L 4.0" Anodized



42D
1/4" Exhaust Manifold Drain
Petcock



- KS496S** 4.0" Riser Gaskets No Slots
- KS496** 4.0" Riser Gasket W/Slots
- KS418M** 3.5" Riser Gaskets W/Slots
- KM2234** 3.5" Riser Block Off Plate
- KM2235** 4.0" Riser Block Off Plate

EXHAUSTS

KODIAK ENGINES

EXHAUSTS



EXHAUST THRU HULLS

BJ4.0THM-A 4.0" Assembly

BJ3.5THM-A 3.5" Assembly

BJ4.0THM-30-A 4.0" 30 Degree
Angled

SOLD EACH

REPLACEMENT PARTS

BJ4.0RF 4.0" Rubber Flapper

BJ3.5RF 3.5" Rubber Flapper

SSS0420075 SS Allenhead

BJ4.0RP 4.0" Retainer

BJ3.5RP 3.5" Retainer



4.0WR 4.0" Exhaust Hose

3-1/2WR 3.5" Exhaust Hose

SOLD BY THE FOOT



CP0003540 3.5" x 4.0" Exhaust Adapter

BJ3.5IM 3.5" Inline Muffler



SS EXHAUST CLAMPS

#72 4.0" Clamp

#64 3.5" Clamp

T-Clamps -

AF-450 - 4.5" T-Clamp

AF-350 - 3.5" T Clamp

KODIAK ENGINES

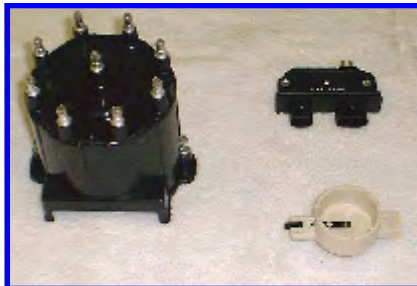


- 248801** Oil Sender
- 266201** Water Temp
- 512801** Water Temp Alarm 205 Temp
- 705801** Oil Pressure Safety
- 25036276** Electric Fuel
- 7851-37-50** 50 amp Circuit
- 332014157** Hella
- 12570125** 5.7 Knock Sensor MEFI 5
- 12621234** Oil Pressure 6.2LS3/LSA
- 25036979** Coolant Temp Sensor
- 12574403** Oil Sender
- 12603781** Oil Level LSA/LS3

- 10477219** Fan Type V8 Rotor
- 10496798** Small V8 Rotor



- 443825** 4.3L J Engine Harness
- 12181941** 5.7L TBI Fuel Injection Harness
- 443825-T** 5.7L TBI/BFI Engine Harness
- 443825** 5.7L J Engine Harness
- 44826-T** 454 JP Engine Harness
- 443826-T** 502 JP Engine Harness
- 12181942** 502 JP Wiring Harness
- KM9998** 8.1L Wiring Harness
- 443826-T** 8.1L Engine Harness/6.0L EFI
- KM7253** 6.0L EFI Harness
- KM10235** 6.2L LSA Main Engine Harness
- KM8315** 6.2L LS3 Main Engine Harness



- 10476237** 3.0L Distributor Cap
- 10467546** 3.0L Rotor
- 10482830** 3.0L Module
- 10477182** V6 Distributor Cap
- 10452458** V6 Distributor Cap Bosch
- 10482830** V6 Module
- 10470597** V6 Rotor
- 10477841** V8 Distributor Cap
- 10452459** V8 Distributor Cap Bosch
- 10482830** V8 Module
- 10477219** V8 Rotor
- 10452457** V6 / V8 Rotor Bosch
- 10485432** V6 / V8 Switch Bosch
- 12570425** Bosch Distributor 5.7L
- 93441559** Bosch Distributor 4.3L



- KM2137** 8 mm Plug Wire Set V6 & V8
- KM2074** 7 mm Plug Wire Set 3.0L
- 12192364** - BFI Plug Wire Set 5.7L/4.3L
- 15319352** - Plug Wire 1/2 RH
- 15319353** - Plug Wire 1/2 LH
- 12158612** - Coil Wire 5.7L/4.3L
- KM2141** - Bosch Plug Wire Set 4.3L
- 15421853** - Plug Wire 1/2 RH
- 15421850** - Plug Wire 1/2 LH
- 12158612** - Coil Wire 4.3L/5.7L
- 12568466** - BFI Coil 4.3L /5.7L
- 12192449** - 6.0L Plug Wire Set
- 12192449** - 8.1L/6.2L LSA Plug Wire Set

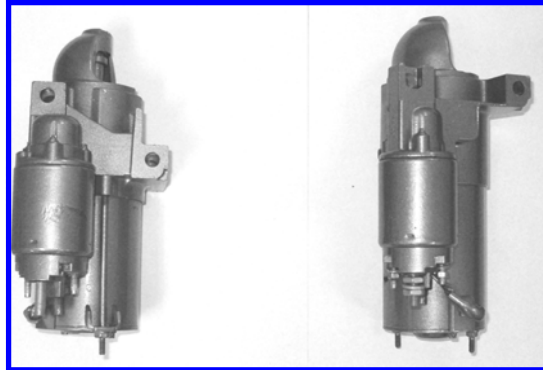
ELECTRICAL

KODIAK ENGINES

STARTERS

Low Mt. Starter 14" Flywheel for
4.3L, 5.7L, 383, 8.1L

- 9000821A** Starter w/ Bolts
- 9000821** Starter Only
- 12561387** Starter Bolts
for 4.3L, 8.1L
- 12338064** Starter Bolts
5.7L, 383

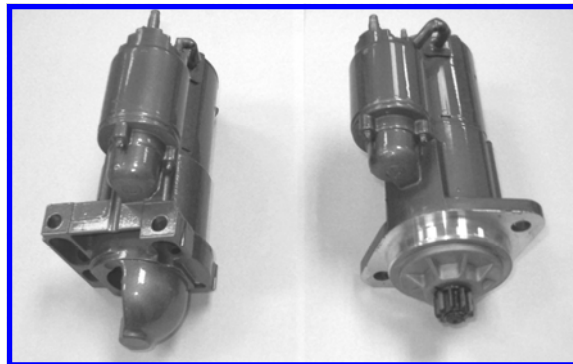


Low Mt. Starter 12 3/4"
Flywheel for 3.0L, 5.7L

- 9000820A** Starter w/ Bolts
- 9000820** Starter
- 14037733** Short Bolt
- 12338064** Long Bolt

6.0L/6.2L LSA &
LS3 Low Mt. Starter

- 9000887** Starter
- 12561387** Bolts



High Mt. Starter for
5.7L, 383, 6.0L, 8.1L/6.2L
LSA & LS3

- 9000888** Starter
- BHM07C100** Bolts

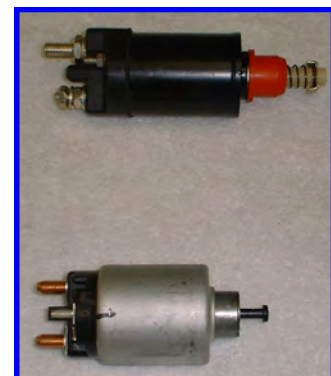


- 10105832** - 14" Flywheel for 5.7L
- 14088650** - 12 3/4 " Flywheel for 5.7L
- 460583** - 14" Flywheel Ring Gear

- 8000230**
2400 Starter



- 10457451** Solenoid
Old Style High
Mount



- 1114583** Solenoid Low
Mount New High

KODIAK ENGINES



KM2102A V6 Distributor Kit

COMPONENTS

1103993 V6 Distributor
1115498 Coil
10486025 Patch Wire

10486135 Shift Interrupt Wire
10486024 HEI Timing Jumper
12097982 Coil to Distributor Wire
KM2137 8mm Plug Wire Set

KM2060 V8 Distributor Kit

COMPONENTS

1103799 V8 Distributor
1106010 Coil
10486025 Patch Wire

10486135 Shift Interrupt Wire
10486024 HEI Timing Jumper
12097982 Coil to Distributor Wire
KM2137 8mm Plug Wire Set

KM2061 3.0L Distributor Kit

COMPONENTS

1103782 3.0L Distributor
1115498 Coil
10486025 Patch Wire

10486135 Shift Interrupt Wire
10486024 HEI Timing Jumper
12097982 Coil to Distributor Wire
3.0L Plug Wire Set
93430078 Plug Wire
93430079 Coil Wire

DISTRIBUTOR KITS

KODIAK ENGINES

ALTERNATOR & BRACKET



K032049 70 Amp
Alternator



19020614 70 Amp
Alternator



8MR2069TA 90 Amp
Alternator for 4.3L, 5.7L, 383

8MR2401U-8.1 105 Amp
Alternator for 6.0L, 8.1L



K032049-UR 51 Amp Mando
Alternator



8600002 6.2LS3/LSA
Alternator

PC7303 Large Bracket
PC7304 Small Bracket
SP07-100-200 Spacer
BHM06C325 3 1/4" bolt



KM9010 Connector for
Delco Alternator

KODIAK ENGINES



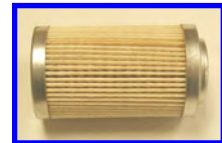
- 59-5020** 8.1L K & N Spark Arrestor
- 59-5050** 502 K & N Spark Arrestor
- 59-5000** 454 K & N Spark Arrestor
- 59-2030** 5.7L Port Fuel K & N Spark Arrestor
- A7400L** 6.0L EFI
- A7400C** 8.1L EFI



- 802220ABV62/2** 4.3L/5.7LTBI
- 802010AV62-2F** 4.3L/5.7L Carb.
- A7390-2V62N** 4.3L/5.7L BFI
- A7600ESV38** 6.2L LSA/6.0L VVT
- 59-5002** 6.2L LS3



- 25121741** TBI/PFI/BFI



- 12604** 6.2L LSA & LS3 Replacement



- P4594A** Carter Fuel Pump Assy.
- P4594** Carter Fuel Pump Only
- 25036276** Oil Pressure Safety Switch
- P4600HP** 8.1L/502 Fuel Pump



- 11108** 6.2L LSA/LS3 Fuel Pump
- 11108 Aero Fuel Pump**



- 12307** 6.2L LSA/LS3 Fuel Filter



- P61344S.KIT** New Fuel Pump Single In/Out—Update KIT for 52365517



- 13114** 6.2L LSA/LS3 Fuel Regulator

SPARK ARRESTOR/FUEL PUMP

KODIAK ENGINES

SPARK ARRESTOR/FUEL PUMP



P4594A Carter Fuel Pump Assy.
P4594 Carter Fuel Pump Only
25036276 Oil Pressure Safety Switch



P61344S.KIT High Pressure Fuel Pump Alternator Kit



P61344S Fuel Pump HP

KODIAK ENGINES



REAR MOUNT KIT KM-RMK

COMPONENTS

K703409 Rear Engine Mount
K701401 Engine Bar Mount
K701402 Vibration Mount
BSM07C125 Allen Bolts
BHS1011125 5/8" x 1 1/4" Bolt



AMERICAN TURBINE CONE ADAPTER K700282A

COMPONENTS

K700282 Cone Adapter
KM2075-5 Rubber U bolt
New PN. KM 7614
WPS11H-SPEC Short Drive Line
BSM07C125 Allen Bolts



ENGINE MOUNTS

VBM01C Cast Engine Mount
DF210 Engine Vibration Mount
VBM03 Cast Short Mount
PC7078 Trunion Pin



ENGINE MOUNT

KM2077A 4 Point Mount Kit
KM2077A-S Short Mounts

ENGINE MOUNTS

KODIAK ENGINES



WATER PUMP PULLEY

3995646 4.3L/5.7L

14023156 454/502

12550053 8.1L

CRANKSHAFT PULLEY

3744043 4.3L/5.7L

3921923 454/502

12555609 8.1L

PULLEY/BELTS



BELTS

25-7465 4.3L V Belts

25-7435 5.7L V Belts

15450 454/502 V Belts

25-060725 8.1L Serpentine Belt

4060770 6.0L Serpentine Belt

25-060635 6.2L LSA Serpentine Belt

12628026 6.2L LSA Supercharger Belt

25-060660 6.2L LS3 Serpentine Belt



68514441381 Rubber Lovejoy w/ HDWR
KM3018 Close Coupled Center Spline
KM3022 Close Coupled Flywheel Adapter



DRIVE ADAPTER

KM2001-V6 V6 1310

KM2001A 5.7L 1310

KM2023A 454/502 1310

PC8000 Metric Bolts for 8.1L

KM2024A-81 8.1L 1350 Drive Adapter

KM2023A-81 8.1L 1310 Drive Adapter

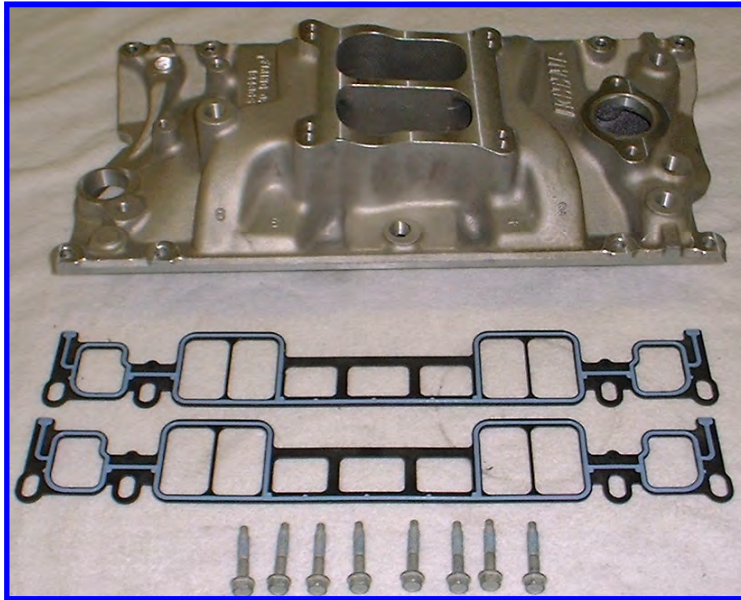
KM7543A 6.0L/6.2L LS3 1310 Drive Adapter

KM9073 6.2L 1350 Drive Adapter

KM9085 6.2L 1310 Drive Adapter (High Mount Starter only)

KM10129 6.2L 1310 Drive Adapter

KODIAK ENGINES



KM2155 5.7L Vortec Intake
12550034 5.7L Intake Manifold
 Gaskets Each
12550027 Intake Manifold Bolts



9171 Chrome Breather



0-80551 Holley 650 CFM

"Spread Bore"

0-80492 Holley 600 CFM
 V6



1409 Edelbrock 600
 CFM

"1409"



35242 Throttle-Cable Ball
 Joint 5/16" T
31799.001 Throttle Ball Carb.



36174 Throttle-Cable Clip



1932 V6 Carb. Adapter



3120R-ROC-32 RACOR
 Fuel Filter /
 Water
 Separator

S3232-UR
RACOR Fuel
 Water Filter



AP6030 Fuel Water Separator
3225 Filter Only

INTAKE MANIFOLDS

KODIAK ENGINES

BELLHOUSING/COVERS



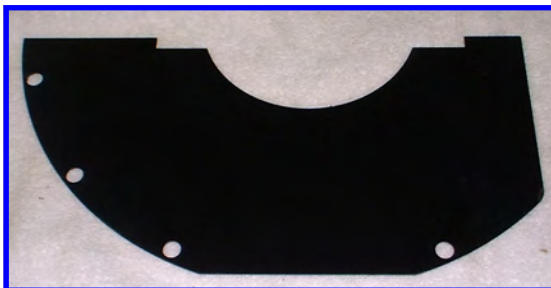
KM2014 Cover Top Mount Starter



**Chevrolet Bellhousing Assembly
K262HCA** Assembly fit 3.0L through 502
Cover Plate not included.



KM2008 Cover Plate Lower Half
for Top Mount Starter



KM2009 Cover Plate for Low Mount Starter

KODIAK ENGINES

4.3_gasket_kit Complete 4.3L Gasket Kit
Includes:

- 1) **10220906** Oil Pan Gasket
- 2) **03754587** Water Pump Gasket
- 2) **12552362** Head Gasket
- 1) **12529196** Intake Gasket
- 1) **10108445** Dist. Gasket
- 2) **10201397** Valve Cover Gasket
- 1) **10105135** Thermostat Gasket

5.7_gasket_kit Complete 5.7L Gasket Kit
Includes:

- 1) **10108676** Oil Pan Gasket
- 2) **3754587** Water Pump Gasket
- 2) **14096405** Head Gasket
- 2) **10046089** Valve Cover Gasket
- 2) **12550034** Intake Gasket
- 1) **10105135** Thermostat Gasket
- 1) **10108445** Dist. Gasket

496_gasket_kit Complete 8.1L Gasket Kit
Includes:

- 1) **12567777** Oil Pan Gasket
- 2) **12558875** Water Pump Gasket
- 1) **12558165** Head Gasket LH
- 1) **12558166** Head Gasket RH
- 1) **88893911** Intake Gasket
- 1) **12551240** TBI Base Gasket
- 1) **10105135** Thermostat Gasket
- 2) **12559597** Valve Cover Gasket
- 1) **12559277** Rear Main Seal

Marine Spark Plug Chart

- 93206675** 2.4L
- 25162556** 4.3L / 5.7L (NGK# 41-993/41-101)
- 12571164** 6.0L LY6 / LQ4 (NGK# 41-985)
- 12621258** 6.2L LS3
- 12571165** 6.2L LSA (NGK# 41-104)
- 12578277** 8.1L / 8.1L HO (NGK# 41-983)

GASKET KITS/SPARK PLUGS

KODIAK ENGINES

MISCELLANEOUS



- SAND TRAP**
- KT701WT Complete Sand Trap
 - 269HB-12-12 Barb, Elbow
 - K701WT1 Sand Trap Top
 - K701WT2 Sand Trap Bottom
 - NHS0518F Nut
 - K701WT7 Stud
 - K701WT3 Glass
 - WPS05 Washer
 - K701WT4 O Ring
 - 215PN-12 Nipple
 - K701WT5 Valve
 - 125HBL-12-12 Hose Barb (Optional)
 - K700623 Insulating Bushing
 - NHS0518N Nyloc Nut



KM2046 Dry Run Kit



34060-0130 Jabsco Hand Pump



KM7651 Jet Repair Manual

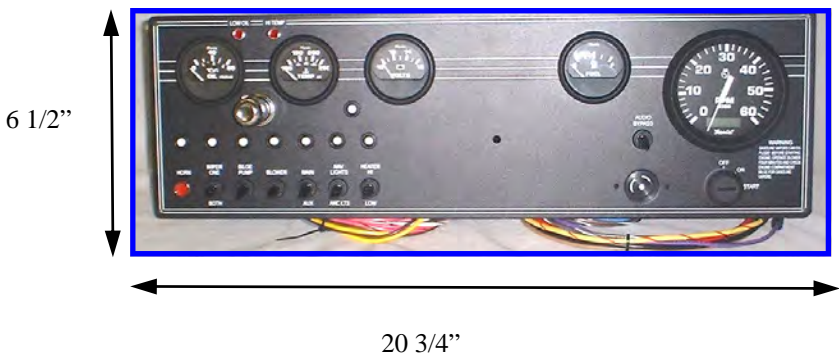


- HKX** Stomp Grate For Kodiak, Hamilton 770, Xtreme, and Turbo.
- H212** 212 Hamilton Pump
- SG/Spring** Replacement springs

KODIAK



- 443705-A** Kodiak Instrument Panel
- 443705-B** W/ Center Hole
- 443814** 60 FT Wire Extension
- 443352** 30 FT Wire Extension
- 443508** 26 FT Wire Extension
- 443505-A** 20 FT Wire Extension
- 443808** 15 FT Wire Extension
- KM443508** Repair Kit (Plug)



- 443705-B** -Kodiak Instrument Panel Drilled For Center Steering Column



- K700623** Insulation Bushing (12)
- WPF3407506** Fiber Washer (12)
- WPS05** Washer (24)
- BHS0518150** Bolt (12)
- NHS0518F** Nut (12)
- K700621** Transom Seal
- K702331** Transom Ring
- K700624** Transom Spring

MISCELLANEOUS

KODIAK

MISCELLANEOUS

- F6B9** **Big Block**
- F5B9A** Raw Water Pump Kit
- Raw Water Pump Repair Kit
- 09-127B-1** F5B9 Impeller
- 09-812B-1** F6B9 Impeller
- 1-45312-1** Backing Plate



- K700601T** Intake Gasket 1" Thick
- K700601** Intake Gasket 1/8" Thick

KODIAK JET

1/2 of a Kodiak 2 Stage Jet



KODIAK

IMPELLER CHART

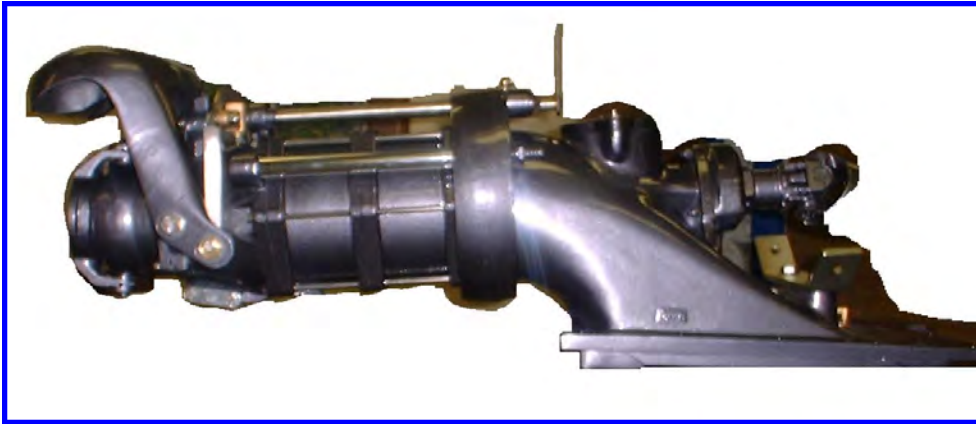
ENGINE	3 STAGE	2 STAGE	IMPELLER
262(4.3L)		X	1/5-92
305(5.0L)		X	2/4-92
350(5.7L)	X		5/5/4-92
350(5.7L)		X	1/4-92
364(6.0L)	X		1/3/4-92
383	X		5/5/4-92
454	X		1/2/4-92
502HO	X		1/2/4-92
496(8.1L)	X		1/3/4-92
496HO(8.1L)	X		1/3/4-92

For best performance to an old 3 stage pump change the back impeller to a #4 and add a Pozzi Nozzle. This will drop the RPM and increase performance.

When using a 3 stage jet with a 8.1L engine for best performance a 1XL Impeller (K700550) is required.

To order the new 2002 model pump use 231554-92. This indicates the new model. The two stage pump will be 221, and the single stage will be 211.

KODIAK



A compact design featuring a short drive shaft which moves the engine closer to the stern, leaving more room in the boat for passengers and recreational equipment. Strong one-piece reverse deflector can be engaged in an emergency to act as a jet-assisted brake. True axial-flow jet design for instant acceleration, maximum fuel economy, and superior low-speed maneuverability.

- **SINGLE STAGE PUMP**

- Maximum Laden Boat Weight: 2900 lbs (1400 kg)
- Minimum Power/Laden Weight: 4.5 hp/100 lbs. (10 hp/100 kg)
- Number Of Stages: 1
- Power Range (gasoline): 50-130 hp (37-97 kw)
- Suitable Engine Size: 60-200 C.I.D (1 to 3.3 litres)

- **2 STAGE PUMP**

- Jet Unit Weight: 120 lbs. (55 kg)
- Maximum Laden Boat Weight: 4000 lbs. (1800 kg)
- Minimum Power/Laden Weight: 4.5 hp/ 100 lbs. (10 hp/100 kg)
- Number Of Stages: 2
- Power Range (gasoline) 100-240 hp (75-179 kw)
- Suitable Engine Size: 180-350 C.I.D. (3-5.7 litres)

- **3 STAGE PUMP**

- Maximum Laden Boat Weight: 4800 lbs. (2200 kg)
- Minimum Power/Laden Weight: 4.5 hp/ 100 lbs. (10 hp/100 kg)
- Number Of Stages: 3
- Power Range (gasoline) 200-400 hp (149-299 kw)
- Suitable Engine Size: 250-500 C.I.D. (4 to 8 litres)

JETS

KODIAK JETS

CASTINGS



K702319 Main Intake Housing w/Wearing and Insulator Installed

K702319AD Main Intake Housing w/Wearing and Insulator Installed-Anodized



K703376A Bearing Housing w/ Bearing and Seal

K703376AD Bearing housing w/ Bearing and Seal-Anodized



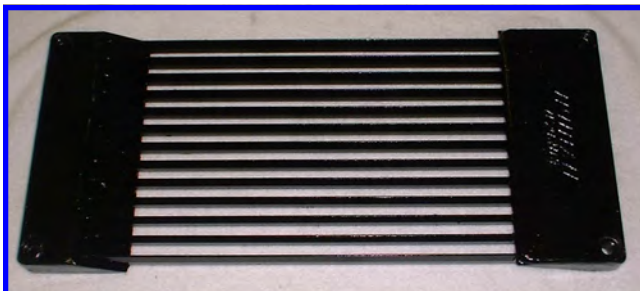
K700755A-92 92mm Pozzi Nozzle

K700755A-92-ANDZ 92mm Pozzi Nozzle Anodized



K702603 Seal Plate

K702603AD Seal Plate Anodized



K703113-2 Intake Grate

K703113-ANDZ Intake Grate Anodized



102564 Hatch Extension

KODIAK JETS



K703174 Reverse Bucket
K703174AD Reverse Bucket Anodized

K703174-P Polished Reverse Bucket



K702326A Stator Housing Assembly
K702326ADA Stator Housing Assembly Anodized
K702326 Stator Housing Only



K703358A Tail Pipe Assembly
K703358AD Tail Pipe Assembly Anodized



K700550 Overlap Impeller 1XL
K700551 Overlap Impeller
K720555 Course Pitch #5 19°
K721102 Course Pitch #2 22°
K721102-23 Course Pitch #3 23°
K721104 * Course Pitch #4 24°
K700551-1521 V6 Overlap Impeller

* Can only be used in the last stage.



K702320 Inspection Cap
K702320AD Inspection Cap Anodized

CASTINGS

KODIAK JETS

INTERNAL PARTS



K710523 1 Stage Main Shaft
K720523 2 Stage Main Shaft
K730523 3 Stage Main Shaft



K700519 Seal Face Housing

K700518 Slinger

K700517A Locating Ring with Seal

K700503 Bearing Spacer



K700554 Impeller Fairing



K700552 Cutlass Bearing

K720556 Bearing Sleeve



K700522 Cotter Pin

K700521A Mechanical Seal Assm.

K700500B = Tune up Kit
3) ORB7734139
4) ORB0748158
2) K700552
2) K720556
1) K700522
1) K700521A



KODIAK JETS



- K700403** 1 Stage Wear Ring
- K720403** 2 & 3 Stage Wear Ring Stator Housing
- K700402** 1 Stage Insulator
- K720402** 2 & 3 Stage Insulator



NHS1216F Main Shaft Nut (Impeller Side)

K700525 Main Shaft Washer (Impeller Side)



K700502 Brass Hex Nut
SSS0420038 Stainless Steel Allen Head Locking Screw



K700500A = Rebuild Kit
Includes:

- | | |
|-------------------|-----------------|
| K700502 | K700503 |
| OSB1750375 | K703376A |
| ORB2984139 | K700517 |
| OSB1750375 | K700503 |
| K700518 | K700519 |
| ORB2484139 | K700521A |
| K700522 | K700512 |
| SSS0420038 | |



K700524 Impeller Key

INTERNAL PARTS

KODIAK JETS

- K730107** 3 Stage Water Tube
- K730107-P** 3 Stage Water Tube
Polished
- K720107** 2 Stage Water Tube
- K720107-P** 2 Stage Water Tube
Polished
- K710107** Single Stage Water Tube



- K730117** 3 Stage Stud
- K720117** 2 Stage Stud
- K710117** Single Stage Stud

- K730117A** Long 3 Stage Stud
- K720117A** Long 2 Stage Stud
- K710117A** Long Single Stage Stud



- K730202** 3 Stage Steering Shaft
- K720202** 2 Stage Steering Shaft
- K710202** Single Stage Steering Shaft

- K730302** 3 Stage Reverse Shaft
- K720302** 2 Stage Reverse Shaft
- K710302** Single Stage Reverse Shaft

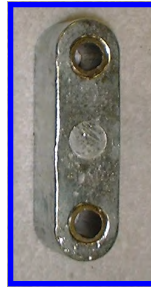
PARTS

KODIAK JETS

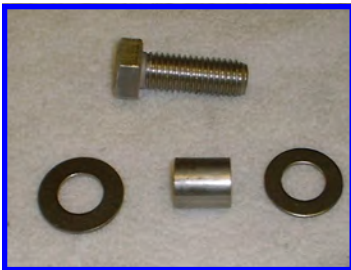


K700203 Long Steering/Rev shaft bushing

K700206 Short Steering/Rev and Nozzle bushing



K700120 Zinc Anode



BHS1011175 SS Bolt
WPS10 Washer
K700309 Pivot Sleeve
Reverse Bucket



K700313 Extension Spring, Reverse Bucket



BHS0616150 Hex Bolt
WLS06 Spring Washer
K700307 Bushing, Bucket



K700205A Taper Pin



K700306 Reverse Yoke
K700305 Roller Rev Crank



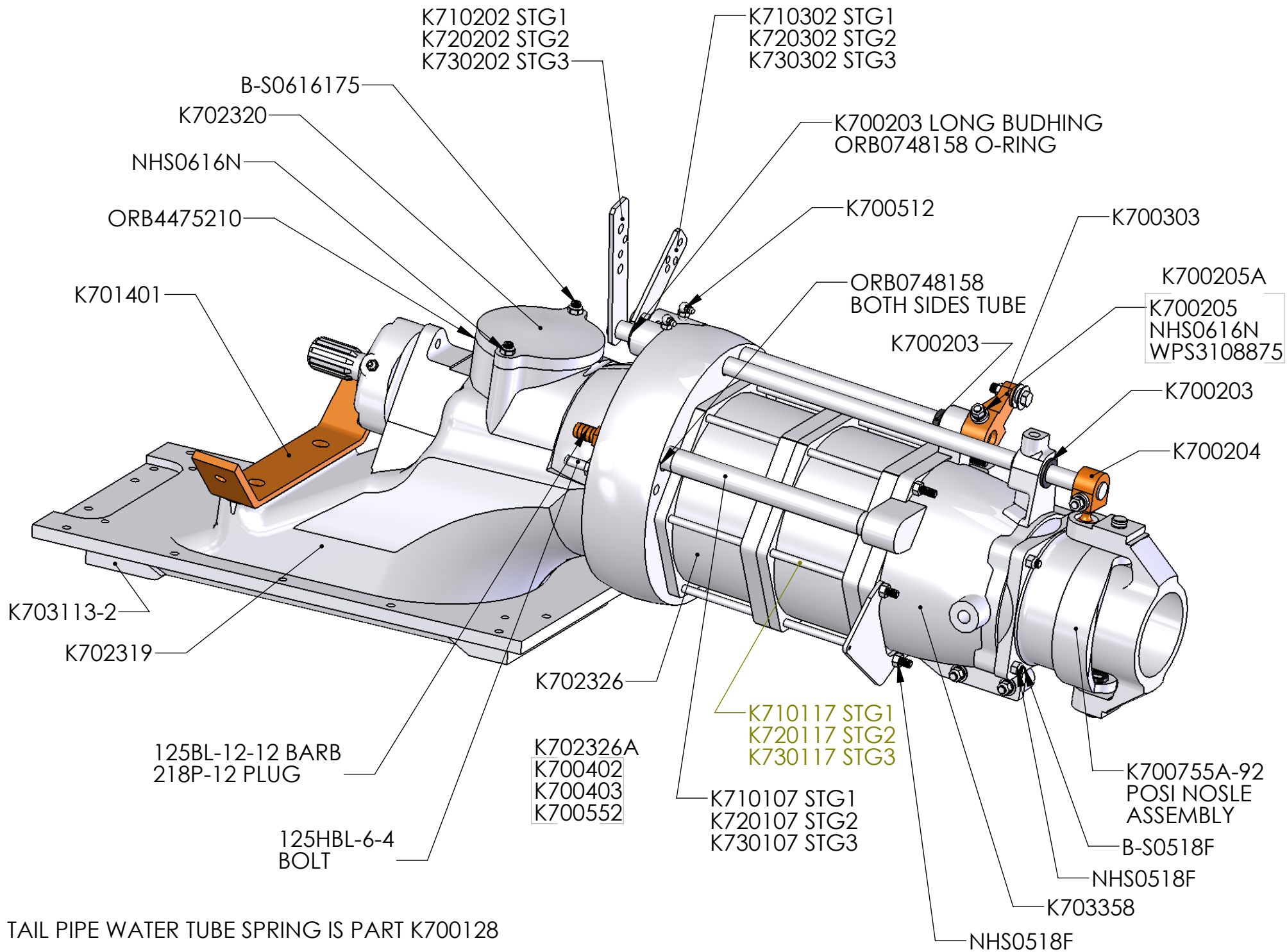
K700204 Steering Crank

K700303 Reverse Crank

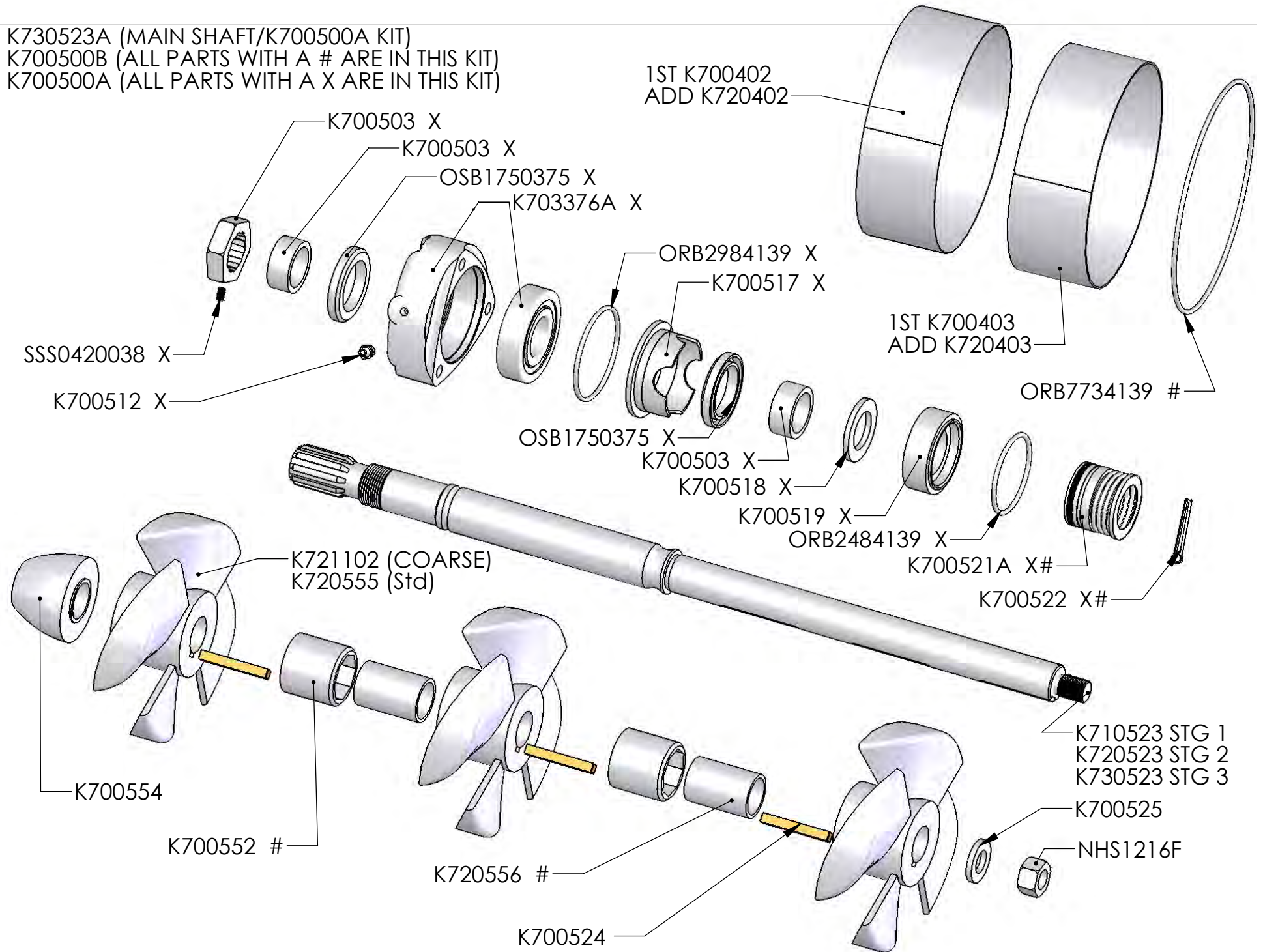


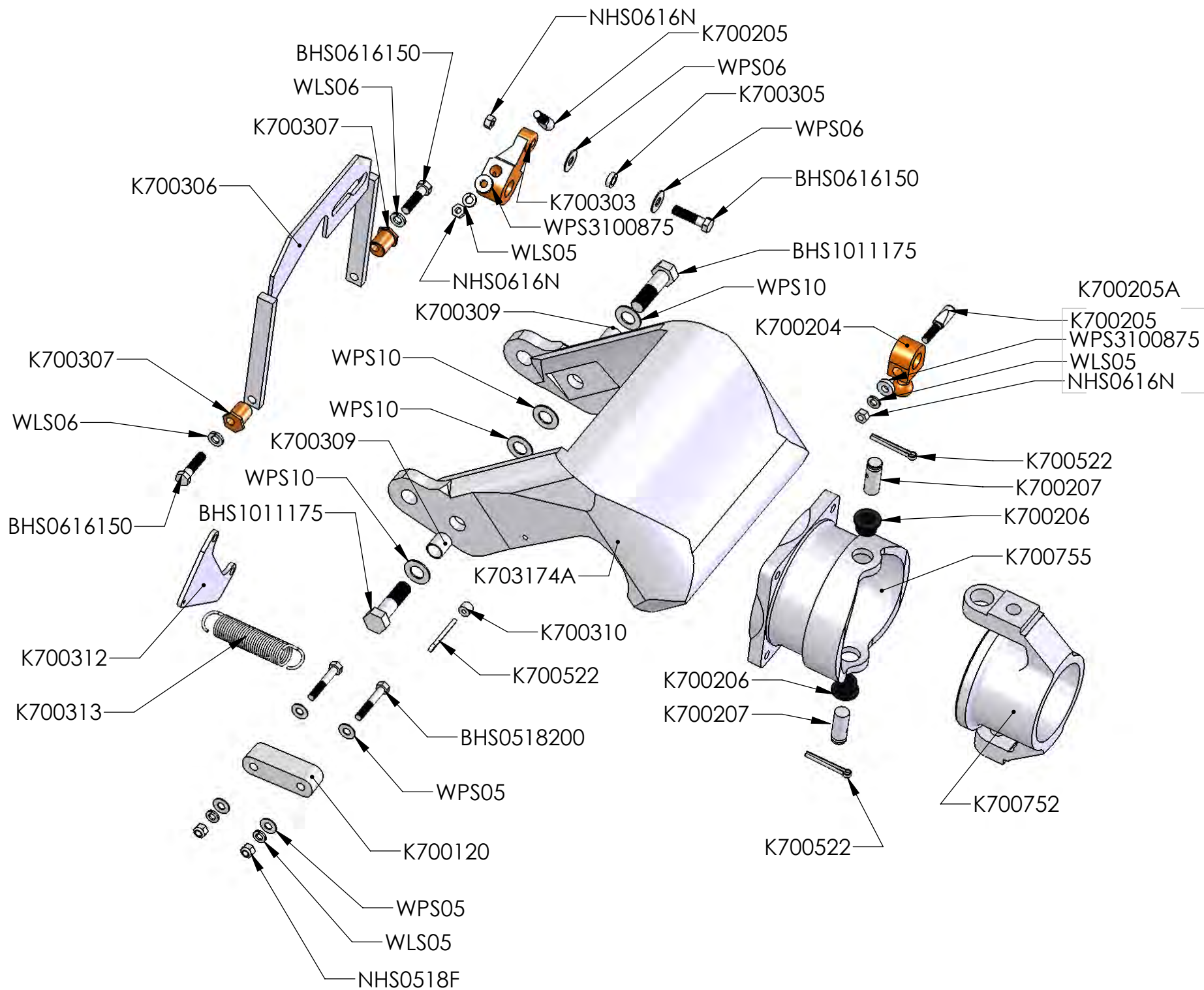
K700656L Screen Rake Long

PARTS



K730523A (MAIN SHAFT/K700500A KIT)
 K700500B (ALL PARTS WITH A # ARE IN THIS KIT)
 K700500A (ALL PARTS WITH A X ARE IN THIS KIT)





<u>Part Number</u>	<u>Description</u>
03754587	4.3L Water Pump Gasket
1-1/4WR	1 1/4" Wire Reinforced Hose
1-3/4WR	1-3/4" Hose,Wire Reinforced
1-7/8WR	1-7/8" Hose,Wire Reinforced
1-A	3/8" Zinc Anode
10-24504-03	6.2L Intercooler Pump
10029398	Relay Bracket (TBI)
10046089	5.7L Valve Cover Gasket
10077612	Dip Stick Tube 4.3L/454
10096197	Distributor Hold Down
10105135	Thermostat Housing Gasket
10105832	Flywheel 5.7L (14")
10108445	Distributor Gasket
10108676	5.7L Oil Pan Gasket
10110878	S.B.V8 Oil Indictor
10201397	4.3L Valve Cover Gasket
10220906	4.3L Oil Pan Gasket
10126772	Gasket (454 PFI Kit)
10129565	Gasket (5.7L/454 PFI Kit)
10144043	V6 Oil Indicator
102564	100 Series Jet Hatch Extension
10452457	Rotor V6 / V8 Bosch
10452458	Distributor Cap V6 Bosch
10452459	Distributor Cap V8 Bosch
10456126	Knock Sensor (TBI 5.7L)
10457451	High Mount Starter Solenoid
10467546	3.0L Rotor (Voyager)
10476237	3.0L Distributor Cap (Voyager)
10470597	4.3L V6 Rotor
10477182	V6 Distributor Cap (Voyager)
10477219	V8 Rotor (Voyager)
10477841	V8 Distributor Cap (Voyager)
10482803	Module V6 / V8 Bosch
10482830	3.0L/4.3L/5.7L Module (Voyager)
10485432	Switch V6 / V8 Bosch
10486024	HEI Timing Jumper Wire
10486025	Patch Wire (Coil to Ignition)
10486135	Dist. to Shift Interrupt Lead
10496798	Small V8 Rotor
106751	Crankshaft Woodruff Key
1103799	V8 Distributor (Voyager)

KODIAK MARINE

Parts Price List

<u>Part Number</u>	<u>Description</u>
1103993	V6 Distributor (Voyager)
11108	6.2L LSA/LS3 Fuel Pump
1115498	Coil (5.7L)
1114583	Low Mount Starter Solenoid
1115491	3.0L Coil
1115498	4.3L/5.7L Coil
12097982	HEI Coil to Dist. Wire
12158612	4.3L/5.7L Coil Harness BFI
12192449	6.0L Plug Wire Set
12307	6.2L LSA/LS3 Fuel Filter
12338064	Starter Bolt (900820 Style)
12506106	Intake Manifold Gasket (454)
12529196	4.3L Intake Gasket
12527762	454/502 Water Pump
12550027	5.7L Intake Manifold Bolt Ea.
12550034	Intake Manifold Gasket (5.7L)
12551240	8.1L TBI Base Gasket
12552362	4.3L Head Gasket
12555609	Crank Shaft Pulley 8.1L
12558165	8.1L Head Gasket LH
12558166	8.1L Head Gasket RH
12558875	8.1L Water Pump Gasket
12559597	8.1L Valve Cover Gasket
12561387	Starter Bolts for 4.3L, 6.0L, 8.1L
12621234	Oil Pressure 6.2 LS3/LSA
12567777	8.1L Oil Pan Gasket
12568466	4.3L/5.7L BFI Coil
12570125	MEFI 5 5.7 Knock Sensor
12570425	5.7L Bosch Distributor
12571164	6.0L LY6 / LQ4 Spark Plug (NKG# 41-985)
12571165	6.2L LSA Spark Plug (NKG# 41-104)
12574403	Oil Sender 2.4/4.3/5.7
12578277	8.1L / 8.1L HO Spark Plug (NKG# 41-983)
125HBL-10-6	Hose Barb 5/8" x 3/8"
125HBL-10-8	Hose Barb 5/8" x 1/2"
125HBL-12-12	Hose Barb 3/4" x 3/4"
12603781	Oil Level LSA LS3
12604	6.2L LSA & LS3 Replacement
12621258	6.2L LS3 Spark Plug
12628026	6.2L Supercharger Belt
129HB-6-4	Elbow Hose Barb 3/8" x 1/4"
14037733	Short Bolt

KODIAK MARINE

Parts Price List

<u>Part Number</u>	<u>Description</u>
14088650	Flywheel 5.7L (12 3/4")
14091870	Valve Cover Grommet
14096405	5.7L Head Gasket
14102080	Dip Stick Tube 5.7L
15440	S.B. Chev. V Belt
1544270200-5	6.2L LSA/LS3 Fuel Regulator
15450	B.B. Chev. V Belt
15495	Water Separator Filter Assy.
16137039	Map Sensor (TBI & 454 PFI)
16168749	Knock Module (454 PFI & TBI)
16184069	Knock Module (5.7L PFI & TBI)
17113099	Idle Air Control
1824270300-7	6.2L LSA/LS3 Fuel Pump
1932	Carb Adapter V6
2106	Remote Oil Filter Bracket
211P-6	3/8" NPT Square Head Plug
215PN-12	3/4" NPT Close Nipple
218P-12	3/4" Hex Plug
218P-8	1/2" NPT Hex Plug
2214P-4-4	1/4" F X 1/4" X 45 Street Elbow
2225P-4	1/4" NPT Street Tee
2225P-6	3/8" NPT Street Tee
2225P-8	1/2" NPT Street Tee
222P-2-2	1/8" F x 1/8" M Adapter
24117	Solenoid KEM V System
248801	Oil Pressure Sender Gauge
25-060635	6.2L LSA Serpentine Belt
25-060685	6.2L Serpentine Belt
25-7435	5.7L V Belts
25036276	Elect Fuel Pump Oil Pressure Switch
25036979	Coolant Temp Sensor
25121741	Fuel Filter All
25162556	4.3L / 5.7L Spark Plug (NKG# 41-993 / 41-101)
266201	Water Temperature Sender
269HB-10-6	5/8" x 3/8" Hose Barb Elbow
269HB-10-8	5/8" x 1/2" Hose Barb Elbow
27022	Water Divider
27720	Water Cover Plates
2872	1"x 1 3/8" x 1/8" Grommet
3-1/2WR	Exhaust Hose 3 1/2"
3/4WR	Wire Reinforced Hose (Heat Exchanger)
3001001	Seal Retainer

KODIAK MARINE

Parts Price List

<u>Part Number</u>	<u>Description</u>
3001002	Seal Face
300101	Main Housing (300 Series Jet)
300104	Rod Wiper
300105	Stud (1/2" NC x 2 1/4" LNG)
300108	Stud (1/2" NC x 3 1/4" LNG)
300111	Stud (3/8" NC x 2" LNG)
300113	Stud (5/8" NC x 4 3/8" LNG)
300115	Insulating Strip
300116	Wear Ring, S.S.
300201	300 Deflector Pivot Pin
3001101	Transom Mount Casting
3001102	Seal Ring Transom
3001106	Stud (5/16" NC x 2 5/8" S.S.)
3001108	Rubber Seal Ring, Transom
3001109	Ball Seat Half, Inside
3001110	Ball Seat Half, Outside
3001112	Stud Special (5/8" NC x 3 1/8" LNG)
3001116	Ball Connector Hydraulic Ram
3001201	300 Series Clean Out Rake
3001204	End Cap Closed Clean Out
3001205	End Cap Open Clean Out
3001210	Key 1/4" Square x 1 1/8" LNG
3001214	Extension Spring Clean Out
3001301	300 Series Main Shaft
3001303	Impeller Key
3001304	Cotter Pin, 3/16" x 2 3/4" LNG
3001305	Mechanical Seal
3001306	Cutlass Sleeve Main Shaft
300201	300 Series Deflector Pivot Pin
300202	Bushing Steering Shaft Guide
300203	Bushing Steering Shaft Guide
300204	Bearing Spacer Cutlass Sleeve
300205	Bushing Nozzle Pivot
300206	Bushing Reverse Bucket Pivot
300207	Spacer Bearing/Seals
300208	End Nut Main Shaft
300209	Bushing Steering Shaft Guide
3002101	Steering Crank
3002102	Steering Tiller
3002106	Steering Shaft 300 Series
300212	Main Shaft Bearing
3002601	Hydraulic Cylinder

KODIAK MARINE

Parts Price List

<u>Part Number</u>	<u>Description</u>
3002901-4L	Impeller 4 Blade Large Hub
3002901-5L	Impeller 5 Blade Large Hub
3002901-5S	Impeller 5 Blade Small Hub
300301	Starter Housing Large Hub
300301-S	Starter Housing Small Hub
300304	O ring 11.41" x 1/8" Special
300305	Zinc Anode
300308	Cutlass Bearing
300309	Cone Stator/Shaft Cap
300502	Intake Grate
300601-L	Steering Nozzle Large
300601-M	Steering Nozzle Medium
300601-S	Steering Nozzle Small
300701	Reverse Bucket 300 Series
300702	Pivot Pin Reverse Bucket
300710	Bushing Hydraulic Ram Clevis
300711	Clevis Pin Hydraulic Ram
300712	Cotter Pin 3/32" x 2 2/4"
300714	Clevis Cylinder Rod
300801	Deflector 300 Series
300808	Zinc Anode Changed to K700120
300901	Bearing Housing 300 Series
300902	Oil Seal Double Lipped
3001106	Stud 5/16" x 2 1/2" LNG
303-D	Drive Line 1350/1410 Diesel
310T	Trunion Pin Engine Mounts
31799-001	Throttle Ball Joint
3225	Water Fuel Filter Only
332014157	Hella Relay 12v 40 Amp
34060-0130	Jabsco Oil Hand Pump
35242	Throttle Cable Ball Joint 5/16"
36174	Throttle Cable Clip
3744043	S.B. Crankshaft Pulley
3754587	5.7L Water Pump Gasket
3788459	3.0L Dip Stick Tube
3921923	Crank Shaft Pulley B.B.
3981088	Oil Indicator 454/502
3995646	Water Pump Pulley 4.3L/5.7L
3RM	H/E Rubber Mount Pr.
4.0WR	Marine Exhaust Hose
4.3_gasket_kit	4.3L Gasket Kit
400103	Grease Seal

KODIAK MARINE

Parts Price List

<u>Part Number</u>	<u>Description</u>
400108	Stud 5/8" NC x 5 1/2" LRG
400110	Stud 5/8" NC x 2 3/4" LNG
4001101	Transom Mount Casting 400 Series
400113	Stud 3/4" NC x 5 5/8" LNG
400115	Insulating Strip
400116	Wear Ring S.S.
4001201	Clean Out Rake 400 Series
4001210	End Cap Closed, Clean Out Rake
4001213	End Cap Open Clean Out Rake
4001301	Main Shaft 400 Series
4001302	Impeller Key Mainshaft
4001303	Retaining Ring, Mechanical Seal
4001306	Snap Ring Retaining Collar
4001307	Cutlass Sleeve Main Shaft
4001310	Mechanical Seal 400 Series
4001311	Seal Face
4001313	Impeller Seal
400138	Locknut N 10 SKF
400139	Lockwasher W 10 SKF
4001501	Hydraulic Pump Bracket Old Style 400 Series
4002001	Drive Flange
400201	Pivot Pin Nozzle Deflector
400203	Bushing Steering Deflector
400204	Bearing Spacer
400205	Bushing Nozzle Pivot
400207	Spacer Bearing Oil Seal
400208	Shaft Nut Drive End
4002106	Steering Shaft
400212	Main Bearing 400 Series
400213	Shaft Nut Impeller End
4002901-4	Impeller 4 Blade Large Hub
4002901-5	Impeller 5 Blade Large Hub
4002901-T	Impeller Puller
400301	Stator Housing 400 Series
400303	Cone Stator Housing
400305	Cutlass Bearing
400401	Inspection Cap
400601-L	Large Nozzle
400601-M	Medium Nozzle
400601-S	Small Nozzle
400701	Reverse Bucket 400 Series
400801	Steering Deflector

KODIAK MARINE

Parts Price List

<u>Part Number</u>	<u>Description</u>
400901	Bearing Retainer Housing
403-D	Drive Line 400 Series
4060770	6.0L Serpentine Belt
4104270200-5	6.2L LSA/LS3 Fuel Filter
4430	Grommet 1/2" x 1/4" x 13/16"
443352	30' Wire Extension
443505-A	20' Wire Extension
443508	26' Wire Extension
443705-A	Kodiak Instrument Panel
443808	15' Wire Harness
443825	S.B. Engine Harness
443825-T	S.B. Engine Harness TBI
443826-T	B.B. Engine Harness TBI
443830	Alternator Grounding Wire
460583	5.7L Flywheel Ring Gear
4702	Red Wire Boot
4851	Small Black Wire Boot
496_gasket_kit	8.1L Gasket Kit
4F800-001	160 Degree Thermostat
4F800-008	140 Degree Thermostat
4RM	4" Rubber Mounts Heat Exchanger (Set)
5/8WR	Wire Reinforced Hose
5.7_gasket_kit	5.7L Gasket Kit
512801	Water Temperature Sender (Alarm) 205 temp
59-2030	K&N Spark Arrestor 5.7L PFI
59-5000	K&N Spark Arrestor 454
59-5002	6.2L LS3 Spark Arrestor
59-5020	K&N Spark Arrestor 8.1L/502
59-5050	K&N Spark Arrestor
5RM	5" Rubber Mount Heat Exchanger 2 Per Set
605-1012	Chev Heat Exchanger Thermostat Housing
70440	Molded Hose Thermostat Outlet
70536	Molded Hose B.B. Chev
705801	Oil Pressure Safety Switch
7851-37-50	Klixon Circuit Breaker
8000230	2400 Marine Starter
802010AV62-2F	S.B. Spark Arrestor
803010AV62-2	B.B. Spark Arrestor (Carb)
80424	3/4" x 5/8" Hose Fitting
84248	Water Temp Alarm 6.0L Only 245 Temp
8600002	6.2LS3/LSA Alternator
88893906	8.1L Water Pump

KODIAK MARINE

Parts Price List

<u>Part Number</u>	<u>Description</u>
88893911	8.1L Intake Gasket
88894290	6.0L Water Pump
888-6	Carter Fuel Pump Installation Kit
8MR2401U-8.1	Alternator 105 Amp
8MR2069TA	Alternator 90 Amp
9000820	Low Mount Starter 3.0L
9000820A	Low Mount Starter w/Bolts 12 3/4" Flywheel (3.0L)
9000821	Low Mount Starter 4.3L, 5.7L, 6.0L,454, 8.1L
9000821A	Low Mount Starter w/Bolts 4.3L,5.7L, 6.0L,454, 8.1L
9000887	Low Mount Starter for 6.0L
9000888	High Mount Starter (19010615)
901GH-12	Gasket for Drain Kit Hose Fitting
9171	Chrome Breather Cap
93206675	2.4L Spark Plug
93441559	Bosch Distributor 4.3L
960388-31	Hella Relay 6.0L Large Pin
A7390-2V62N	7" Flame Arrestor
A7400C	8.1L EFI Spark Arrestor
A7400L	4.3L/6.0L EFI Spark Arrestor
A7600ESV38	6.0L VVT/6.2L LSA Spark Arrestor
AF-450	4.0" T Clamp
AP6030	Water Fuel Separator Kit
B-S0518147	Stud 5/16" x 1 1/2" LNG
B-S0616175	Stud 3/8" NC x 1 3/4" LNG
BHM07C100	High Mount Starter Bolts for 5.7L,6.0L,383,8.1L
BHS0616150	3/8" NC X 1 1/2" S.S. Bolt
BHS1011175	5/8" X 1 3/4" S.S. Hex Bolt
BJ3.5IM	3 1/2" Inline Muffler
BJ3.5RF	3 1/2" Rubber Flapper
BJ3.5RP	3 1/2" Muffler Retainer Plate S.S.
BJ3.5THM-A	3 1/2" Thru Hull Exhaust Muffler
BJ4.0RF	4" Rubber Flapper
BJ4.0RP	4" Muffler Retainer Plate S.S.
BJ4.0THM-A	4" Thru Hull Exhaust Muffler
BJ4.0THM-30-A	4" Thru Hull Exhaust Muffler 30 Degree Bend
BSM07C125	7/16" NC x 1 1/4" Bolt
DF210	Engine Vibration Mount (Donut Shaped)
DKM-1	1/4" NPT Oil Drain Kit
F6B9	B.B. Johnson Raw Water Pump
H177	3/8" Fuel Hose USCG Only
H212	Hamilton 212 Stomp Grate
H200	5/8" PCV Push on Jiffy Hose

KODIAK MARINE

Parts Price List

<u>Part Number</u>	<u>Description</u>
HE262BFI	Heat Exchanger 4.3L Bosch
HE350BFI	Heat Exchanger 5.7L Bosch
HE350PFI	S.B. 3" Heat Exchanger Only
HE350PFIA	S.B. Chev Heat Exchanger Kit 3" (Port Fuel Only)
HE454PFI	B.B. Heat Exchanger Kit 454/502 PFI (4")
HKX	Kodiak /Hamilton 773 Stomp Grate
K032049	Alternator 70 Amp Delco
K032049-UR	Alternator Mando 50 Amp
K262HCA	Chev Bell Housing Assy
K262HC-P	Chev Bell Housing Assy Polished
K700109	3/8" Clear Plastic Hose
K700120	Zinc Anode
K700128	Tail Pipe Screen Spring
K700203	Nylon Bushing Steering/Reverse
K700204	Steering Crank
K700205	Taper Pin
K700205A	Taper Pin Assy
K700206	Nylon Bushing Steering Nozzle
K700207	Pivot Pin Steering Nozzle
K700282A	American Turbine Cone Adapter Assy.
K700282	American Turbine Cone Adapter Only
K700282-P	American Turbine Cone Adapter Only Polished
K700303	Reverse Crank
K700305	Roller Reverse Crank
K700306	Reverse Yoke
K700307	Bushing Bucket Eccentric (Brass)
K700309	Pivot Sleeve Reverse Bucket
K700312	Bracket Reverse Spring
K700313	Extension Spring Reverse Bucket
K700313A	Cotter Pin Reverse Bucket
K700402	Insulator (First Stage)
K700403	Wear Ring (First Stage)
K700500A	Bearing Assy Less the Shaft
K700500B	Tune Up Kit 3 Stage Jet
K700502	Brass Hex Nut Main Shaft
K700503	Spacer Bearing
K700512	1/8" NPT Grease Fitting
K700517	Locating Ring
K700517A	Locating Ring w/ Oil Seal
K700518	Slinger
K700519	Seal Face Housing
K700521A	Mechanical Spring Assy

KODIAK MARINE

Parts Price List

<u>Part Number</u>	<u>Description</u>
K700522	Cotter Pin Reverse Bucket
K700524	Impeller Key (Brass)
K700525	Washer Impeller End
k700550	Overlap Impeller #1 XL
K700551	Overlap Impeller #1
K700551-15/21	Overlap Impeller 15-21 Pitch
K700552	Cutlass Bearing
K700553	Bearing Sleeve Single Stage
K700554	Jet Impeller Fairing
K700601	Intake Gasket 1/8" Thick
K700601T	Intake Gasket 1" Thick
K700621	Transom Seal
K700623	Insulation Bushing
K700624	Transom Seal Spring
K700656L	Long Screen Rake (100 Series Jets)
K700754	Insert Bushings Steering Nozzle
K700755A-92	92mm Pozzi Nozzle Assy.
K700755A- 92-ANDZ	92mm Pozzi Nozzle Assy. Anodized
K701300	Standard 1310 Drive Line
K701300L	V6 Drive Line
K701401	Engine Rear Mount Bar
K701402	Engine Vibration Mount (Donut Shaped)
KT701WT	Sand Trap Assembly
K701WT1	Top Kodiak Sand Trap
K701WT2	Bottom Kodiak Sand Trap
K701WT3	Glass Kodiak Sand Trap
K701WT4	O Ring, Sand Trap
K701WT5	400 PSI Valve
K701WT7	Stud Sand Trap
K702319	Main Intake Housing
K702319AD	Main Intake Housing Anodized
K702320	Inspection Cover
K702320AD	Inspection Cover Anodized
K702326	Stator Housing Only
K702326A	Stator Housing w/ Bearing
K702331	Transom Ring
K702603	Seal Plate
K702603AD	Seal Plate Anodized
K703113-ANDZ	Intake Screen Anodized
K703113-2	Intake Screen
K703174	Reverse Bucket
K703174AD	Reverse Bucket Anodized

KODIAK MARINE

Parts Price List

<u>Part Number</u>	<u>Description</u>
K703174-P	Reverse Bucket Polished
K703358A	Tail Pipe
K703358AD	Tail Pipe Anodized
K703376A	Triangle Bearing House w/ Bearing
K703376AD	Triangle House w/ Bearing Anodized
K703409	Rear Mount Jet to Engine
K710107	Water Tube Single Stage
K710116	Stud 5/16" NC x 1 3/4" LNG
K710117	Stud 5/16" x 3 3/16" LNG
K710117A	Stud 5/16" x 3 3/8" LNG
K710202	Single Stage Steering Shaft
K710302	Single Stage Reverse Shaft
K710523	Single Stage Main Shaft
K720107	2 Stage Water Tubes
K720107-P	2 Stage Water Tubes (Polished)
K720117	Stud 5/16" x 7 15/16" LNG
K720117A	Stud 5/16" x 8 1/8" LNG
K720202	2 Stage Steering Shaft
K720302	2 Stage Reverse Shaft
K720402	Insulator Stator Housing
K720403	Wearing Stator Housing
K720523	2 Stage Main Shaft
K720523A	2 Stage Main Shaft Assy.
K720555	Standard Pitch Impeller #5 19 Degrees
K720556	Bearing Sleeve Stator
K721102	Course Pitch Impeller #2 22 Degrees
K721102-23	Course Pitch Impeller #3 23 Degrees
K721104	Course Pitch Impeller #4 24 Degrees
K730107	3 Stage Water Tube
K730107-P	3 Stage Water Tube Polished
K730117A	Stud 5/16" x 12 3/4" LNG
K730202	3 Stage Steering Shaft
K730302	3 Stage Reverse Shaft
K730523	3 Stage Main Shaft
K730523A	3 Stage Main Shaft Assy.
KH351L	S.B. Heat Exchanger Bracket LH
KH351R	S.B. Heat Exchanger Bracket RH
KH454	B.B. Heat Exchanger Brackets Pr.
KM-RMK	100 Series Jet Rear Mount Kit
KM10122	6.2L LSA/LS3 Element Fuel Filter
KM10129	6.2L LSA 1310 Drive Adapter
KM10235	6.2L LSA Main Engine Harness

KODIAK MARINE

Parts Price List

<u>Part Number</u>	<u>Description</u>
KM2000-CC	Closed Cooled Blocks Only
KM2000CC-V6	Closed Cooled Blocks Kit V-6
KM2000CC-SB	Closed Cooled Blocks Kit V-8
KM2000CC-BB	Closed Cooled Blocks Kit V-8 BB.
KM2001A	S.B. 1310 Drive Adapter
KM2001-V6	1310 Drive Adapter 4.3L/5.7L
KM2008	Bell Housing Top Mount Cover Plate
KM2009	Bell Housing Bottom Mount Cover Plate
KM2010	Heat Exchanger Drain/Bypass
KM2012	3 1/2" x 1 1/2" Elbow
KM2023A	454 1310 Drive Adapter
KM2023A-81	8.1L 1310 Drive Adapter
KM2024A	454 1350 Drive Adapter
KM2024A-81	8.1L 1350 Drive Adapter
KM2034	Priority Thermostat Housing Assy
KM2036	Gasket Priority Thermostat Housing
KM2038	Plastic Flame Arrestor Cover
KM2060	Voyager V8 Ignition Kit
KM2061	Voyager 3.0L Ignition Kit
KM2065	Zinc Anode for the Heat Exchanger
KM2066	Engine Lifting Eyes
KM2075-5	New Number KM7614
KM2077A	4 Point Engine Mount
KM2077A-S	4 Point Engine Mount Short
KM2079	Thermostat Housing Spacer
KM2089	Heat Exchanger Cap 14 lb
KM2096	Intake Manifold Adapter (TBI)
KM2102A	V6 Ignition Kit Assy.
KM2106B	TBI Fuel Pump Bracket Bottom Angle
KM2106T	TBI Fuel Pump Bracket Top Angle
KM2136	Over Flow Tank Bottle
KM2136-81	Over Flow Tank Bottle Small
KM2137	V6/V8 Plug Wire Set 8mm
KM2155	5.7L Intake Manifold
KM2177RW	Raw Water Oil Cooler 1 1/4" In/Out
KM2234	3.5" Block Off Plates Ea.
KM2235	4.0" Block Off Plates Ea.
KM262/CAT	V6 4" Exhaust Manifold Painted
KM262A-4	V6 4" Exhaust Manifold Kit Painted
KM3018	Closed Coupled Center Spline
KM3022	Closed Coupled Flywheel Adapter
KM3502A-ANDZ	Exhaust Manifold (4") Assy. Anodized

KODIAK MARINE

Parts Price List

<u>Part Number</u>	<u>Description</u>
KM3502	Exhaust Manifold (4") Ea.
KM3502A	Exhaust Manifold (4") Assy
KM3502-P	Exhaust Manifold (4") Polished Ea.
KM3502A-P	Exhaust Manifold (4") Polished
KM3502A-ANDZ	Exhaust Manifold (4") Assy Anodized
KM350SOK	5.7L Oil Cooler Kit
KM4192	Exhaust Riser (4") Ea.
KM4192-ANDZ	Exhaust Riser (4") Anodized Ea.
KM4192-P	Exhaust Riser (4") Polished
KM454	Exhaust Manifold (3.5")
KM4542	Exhaust Manifold (4")
KM4542A	Exhaust Manifold Assy (4")
KM4542-P	Exhaust Manifold (4") Polished
KM5452A-P	Exhaust Manifold Assy (4") Polished
KM496SOK	8.1L Oil Cooler Kit
KM7253	6.0L Engine Harness
KM7515	5.7L Heat Exchanger Mount
KM7543A	6.0L 1310 Drive Adapter
KM7590	6.0L Manifold
KM7590A	6.0L Manifold Kit
KM7543A	6.0L/6.2L LS3 1310 Drive Adapter
KM7651	Kodiak/Hamilton Jet Repair Manual
KM7832	5.7L/383 Oil Cooler
KM8050	6.0L Fuel Cooler
KM8315	6.2L LSA Wire Harness
KM9010	Pigtail Delco Alternator
KM9073	6.2L LSA 1350 Drive Adapter
KM9085	6.2L LSA 1310 Drive Adapter
KS418M	Exhaust Riser (3.5") Ea.
KS496	Exhaust Riser Gasket (4") Ea.
KS496S	Exhaust Riser Gasket (4") No Slots
KT701WT	Sand Trap
NHS0518H	5/16" Lock Nut
ORB022	O Ring Rake Seal
ORB0748158	O Ring Water Tubes
ORB233	O Ring Seal Retainer
ORB246	O Ring Bearing House
ORB2484139	O Ring Seal Face Housing
ORB278	O Ring Stator Housing
ORB2984139	O Ring Main Bearing
ORB433	O Ring Inspection Hatch
ORB4475210	O Ring Inspection Cover

KODIAK MARINE

Parts Price List

<u>Part Number</u>	<u>Description</u>
ORB7734139	O Ring Stator Housing
P100	Double Grove Pulley
P4594	Carter Fuel Pump Assy.
P4594A	Carter Fuel Pump Assy.
P4600HP	8.1L/502 Fuel Pump
P61344S KIT	High Pressure Fuel Pump Single In/Out Kit
PC7106	Alternator Bracket
PC7303	Alternator Bracket
PC7304	Alternator Bracket
PC7322	8.1L Heat Exchanger Bracket
PC8000	8.1L Drive Adapter Bolts Metric
PC9068	5.7L/383 Fuel Cooler
PF-2	Oil Filter Remote Oil Filter
PF-51	Oil Filter V6
PF-52	Oil Filter V6
PF-25	Oil Filter 5.7L
S2180	Hydraulic Cylinder (KEM V)
SG/Spring	Replacement Spring for Stomp Grate
SSS0420075	Stainless Set Screw
ST34	Stud, Exhaust Manifold
VBM01C	Tall Cast Engine Mount
VBM03	Short Cast Engine Mount
WLS06	3/8" Spring Washer
WPS10	5/8" Flat Washer
WSP05	5/16" Flat Washer
WSP11H-SPEC	American Turbine Short Drive Line