

simPlugins Panel Builder

All Versions



User Manual

BajuSoftware



Copyright © 2021, BajuSoftware, LLC
Version 2.15.X - July 2021

Table of Contents

Introduction	4
Capabilities and Features	5
Technical Requirements	7
Prerequisites	8
Panel Builder	8
Panel Builder X-Plane Interfaces	8
Panel Builder SimConnect Interfaces.....	8
Panel Builder FSUIPC Interfaces	8
Licensing	9
Licensing for HOME Download Version	10
Step 1 - Requesting an Activation Code.....	12
Step 2 - Entering the Activation Code.....	13
Integration Scenarios	14
Single Computer - Single or multiple Monitors.....	14
Two computers - Single or multiple monitors.....	15
Multiple computers - Single or multiple monitors	16
Installation Procedures	17
Step 1 - Install Panel Builder and Interface(s)	18
Panel Builder	20
Panel Builder Interface(s)	23
Step 2 - Network Configuration	26
Step 3 - Interface Configuration	28
X-Plane 9 Interface (for X-Plane 9 and X-Plane 10.1)	28
X-Plane 10 Interface (for X-Plane 10.20 or greater)	29
X-Plane 11 Interface	31
MS Flight Simulator X SimConnect Interface	33
MS Flight Simulator 2020 SimConnect Interface	35
MS Flight Simulator FSUIPC Interface	37
Lockheed Martin Prepar3D SimConnect Interface (V3, V4, V5)	39
Lockheed Martin Prepar3D FSUIPC Interface (V2, V3, V4, V5)	41
Condor Interface	43
Dodosim 206 Interface FSUIPC	45
A2A FSUIPC/LUA Interface	47
Step 4 - Panel Builder Configuration	50
Operation	52

Multiple Network Adapter Support.....	53
Launching a Panel	53
Auto-Start a Panel	54
Stopping a Panel	54
Display on Desktop.....	54
Move Instruments to a different Monitor	55
Command Line options	55
Building Panels	56
Modifying an existing panel.....	57
Adding an instrument.....	57
Removing an instrument from the panel.....	58
Moving and Resizing an Instrument in a panel.....	58
Modifying an instrument.....	59
Adding a new panel	60
Adding a new panel (automatic panel switching).....	62
Modifying a panel.....	64
Deleting a panel.....	64
Copying a panel.....	64
Exporting a panel.....	65
Importing a panel.....	66
Tips and Tricks	67
Changing the instrument size.....	68
Configuring instruments	68
Using instrument buttons and dials	68
Interface Modification	69
X-Plane 9 (and X-Plane 10.10)	69
X-Plane 10 (10.20 or greater).....	70
X-Plane 11	71
MS Flight Simulator X, MS Flight Simulator 2020 and Prepar3D simConnect	72
MS Flight Simulator, Prepar3D, DodoSim 206 and A2A FSUIPC	73
Datatypes for Offsets	74

Introduction

Panel Builder is an add-on Avionics Package that allows the creation of custom Instrument Panels to interface with several Flight Simulator Programs.

Typically instrument panels are displayed on a separate monitor in full-screen mode. A mask can be used to cover unused portions of the monitor to more closely resemble a typical instrument panel

Panel Builder can be run on the same computer as the flight simulator software. It is recommended thought to utilize one or more additional computers for this purpose for performance reasons.

Each instrument is 'free floating' in the screen. It can be resized, moved around the screen and combined into a predefined panel. For the latter purpose, a management tool called Panel Builder is provided. Panel Builder allows the building of instrument panels for different aircraft types and provides a mechanism for starting and stopping all instruments.

Some instruments contain configuration options that are accessible via a right click menu option. This is used for setting ranges and/or color bars on the instrument, calculations and performance related options. This allows using the same instrument for a slow piston powered airplane or a high-performance turbine powered airplane.

The same instrument can be used multiple times in a panel. This allows for example to build panels for multi-engine aircraft or for defining a pilot and co-pilot instrument panel.

Capabilities and Features

Multiple Flight Simulators supported.

Currently supported are X-Plane (V9.0 and above), MS Flight Simulator X (Acceleration), MS Flight Simulator 2004 and Lockheed Martin Prepar3D (all versions).

Interface software is supplied depending on version purchased.

The same Panel can be used with all supported Flight Simulators.

Modular Design

Instruments (Panel Builder) and Interface software are separate modules. This enables adding new interfaces for other flight simulators without changing the instrument software. The interface software is always installed in the same computer as the flight simulator. The instruments (Panel Builder) can be installed on a separate, networked computer.

Vector based Instruments

Allows the sizing of instrument to match a cut-out mask or to set them to the required size for easy reading.

No images are used to draw instruments on the screen. Instruments are always crisp and easy to read in any size.

Network support

Panel Builder is typically installed on one or more additional, networked computers. This will lower the performance impact the external panel has on the flight simulation software. It also provides additional screen real estate for the panels.

Interface Configuration

Each Flight Simulator Interface can be fully configured to allow for customization and enabling the support of new flight simulator features in the future.

Fixed Wing, Helicopter and Soaring Instruments

All of the most common fixed-wing aircraft and helicopter instruments are provided.

Additional instruments can be added by purchasing instrument add-on packs.

'Free-floating' Instruments	All instruments provided can be moved anywhere on a monitor. This allows accurate placement of instruments on a predefined back-ground graphic or cut-out mask. They can be locked in place to avoid accidental moving.
'Free-sizing' Instruments	All instruments can be resized in fine increments. This is useful to fit instruments into a panel mask
Configurable Instrument Ranges	Many instruments can be configured to match the aircraft's performance data. This configuration allows the use of all instruments in different aircraft types. The configuration is stored within an instrument for a specific panel.
Multiple-use Instruments	Each instrument can be used multiple times within the same panel. This allows the use of engine instruments for multi-engine aircraft and to design a pilot and co-pilot panel.
Commercial Applications	The Commercial version licenses the user to deploy Panel Builder in a commercial environment and for resale as part of a complete flight simulator environment. Each deployment does require the purchase of a separate license.

Technical Requirements

Hardware		
	Processor	Any Dual Core Processor or greater
	Memory	4GB (32 Bit), 8GB (64 Bit)
	Disk Space	1 GB (approx.)
Operating Software		
	Windows 7	32 or 64 Bit
	Windows 8	32 or 64 Bit
	Windows 8.1	32 or 64 Bit
	Windows 10	32 or 64 Bit
Flight Simulator		
	X-Plane	V9, V10 (32&64bit), V11 (64bit)
	MS Flight Simulator X	Acceleration or SP2
	MS Flight Simulator 2004	Any version
	Lockheed Martin Prepar3D	Version 2.0 or greater
	Condor	Version 1.3 or greater

Prerequisites

The following libraries and add-ons are required for the operation of Panel Builder and Interfaces. Some are included as indicated, others are not because of Copyright restrictions (FSUIPC).

Panel Builder

All versions	Microsoft .Net Framework 4.0
--------------	------------------------------

Panel Builder X-Plane Interfaces

X-Plane 9 Interface	<i>No libraries required</i>
X-Plane 10 Interface	Microsoft C++ Runtime 2017
X-Plane 11 Interface	Microsoft C++ Runtime 2017

Panel Builder SimConnect Interfaces

simPluginsFSX	Microsoft .Net Framework 2.0
simPluginsMSFS	Microsoft .Net Framework 4.8
simPluginsPrepar3d V3	Microsoft .Net Framework 4.5
simPluginsPrepar3d V4	Microsoft .Net Framework 4.5
simPluginsPrepar3d V5	Microsoft .Net Framework 4.8

Panel Builder FSUIPC Interfaces

simPluginsFSUIPC	Microsoft .Net Framework 2.0
FSX	FSUIPC 4.974
MSFS 2020	FSUIPC 7.0
simPluginsFSUIPC Dodo	Microsoft .Net Framework 2.0 FSUIPC 4.974
simPluginsFSUIPC A2A	Microsoft .Net Framework 2.0
FSX	FSUIPC 4.974 - registered
P3D V2 & V3	FSUIPC 4.974- registered
P3D V4	FSUIPC 5.155 or FSUIPC 6.03 - registered
P3D V5	FSUIPC 6.03 - registered
simPluginsFSUIPC P3D	Microsoft .Net Framework 4.5
P3D V2 & V3	FSUIPC 4.974
P3D V4	FSUIPC 5.155 or FSUIPC 6.03
P3D V5	FSUIPC 6.03

Licensing

Panel Builder comes in two versions, Home Version and Commercial Version. The Home Version is intended for home use only, which means that you can use Panel Builder on your home network only. The Commercial Version is intended for commercial applications. The Commercial Version is typically used for integration into commercial Flight Simulators, Flight Training, to be shown at Exhibitions and Shows and other commercial applications. In general, any use that is outside of the home requires a Commercial License.

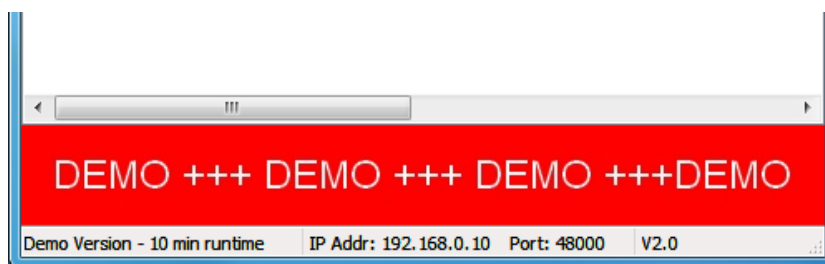
All versions are distributed using the same Installation Package and each version is enabled by a different activation scheme.

All commercial versions that are delivered on an USB Memory stick, the memory stick has to stay plugged in on the computer where Panel Builder is installed on. Replacement USB sticks can be ordered.

The Home Version has also an alternate licensing scheme via an Activation Code. This licensing is used when you purchase a download version of Panel Builder. Licensing is activated by requesting an activation code via E-Mail. A serial number has to be sent and an activation code is returned. Panel Builder provides a facility to enter this activation code. See next chapter for more information.

If Panel Builder is started and neither a USB stick nor Activation code is present, the software reverts to Demo Mode. Demo Mode has the following restrictions:

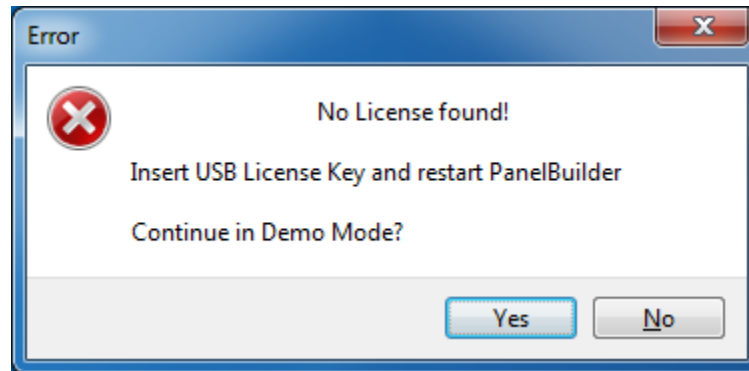
- No new panel can be built
- Only 6 instruments can be added to the existing panel
- The runtime is limited to 10 Minutes.
- Demo Mode is clearly indicated on the Panel Builder Main Screen



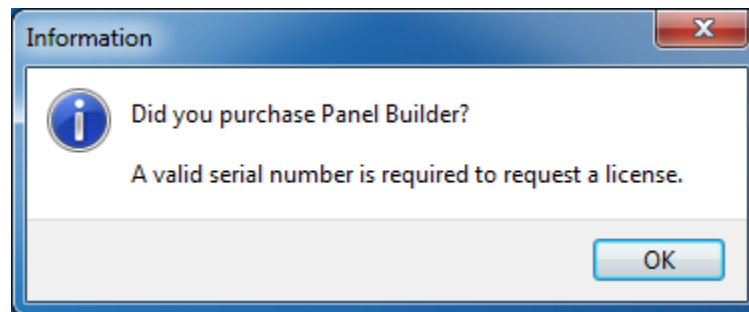
To return to a licensed mode, either a valid USB Memory stick has to be plugged in, or an activation code has to be entered. Panel Builder needs to be restarted in both cases.

Licensing for HOME Download Version

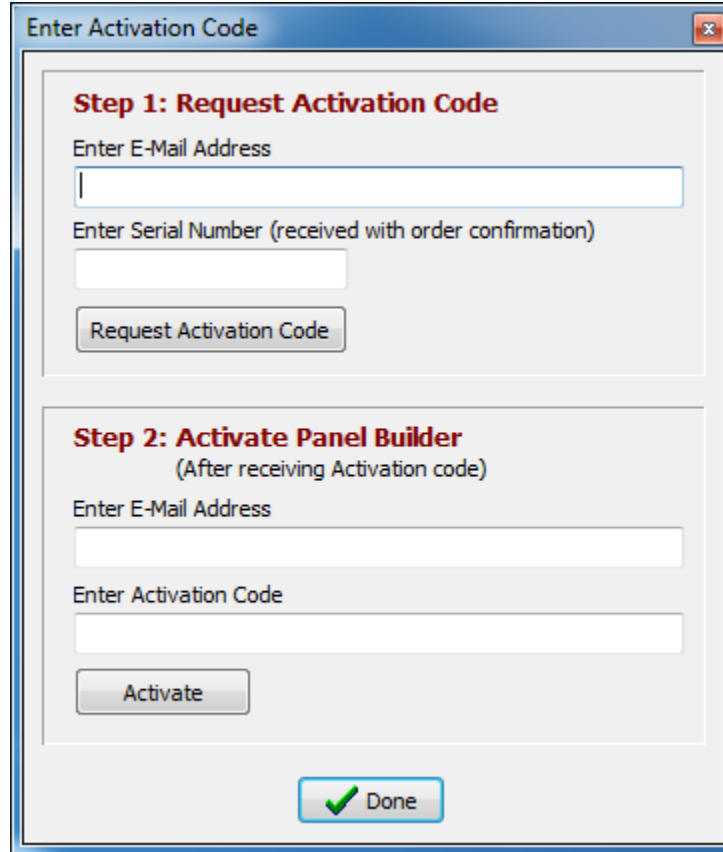
When Panel Builder starts the first time after installation, the license is checked. The following message appears if no license is found:



Click on the [Yes] button. Then select Configuration and Enter Activation Code from the menu. The following information is displayed:



Activation requires a serial number that you should have received from your reseller. If you do not have received this serial number, contact your reseller. Click on [OK].



The screenshot shows a dialog box titled "Enter Activation Code" with a close button in the top right corner. The dialog is divided into two main sections:

- Step 1: Request Activation Code**
 - Label: "Enter E-Mail Address" followed by a text input field.
 - Label: "Enter Serial Number (received with order confirmation)" followed by a text input field.
 - Button: "Request Activation Code"
- Step 2: Activate Panel Builder**
 - Sub-label: "(After receiving Activation code)"
 - Label: "Enter E-Mail Address" followed by a text input field.
 - Label: "Enter Activation Code" followed by a text input field.
 - Button: "Activate"

At the bottom center of the dialog is a "Done" button with a green checkmark icon.

Licensing is a 2 step process. First you request an activation code, and then you enter the received code.

Requesting an activation code is done automatically if connected to the Internet or manually via E-Mail. The activation code is returned to you via E-Mail.

Each Activation Code is unique and is registered to the Serial Number, your E-Mail Address and the Computer you have Panel Builder Installed on. The Activation allows for unlimited re-installs on the same computer. If you have a new computer and install Panel Builder, use the same activation code you have received. There are limited numbers of reactivations for new computers. Once you reach the limit, you will receive an e-mail explaining what to do in this case.

Step 1 - Requesting an Activation Code

Enter your E-Mail Address and Serial Number then click on [Request Activation Code].

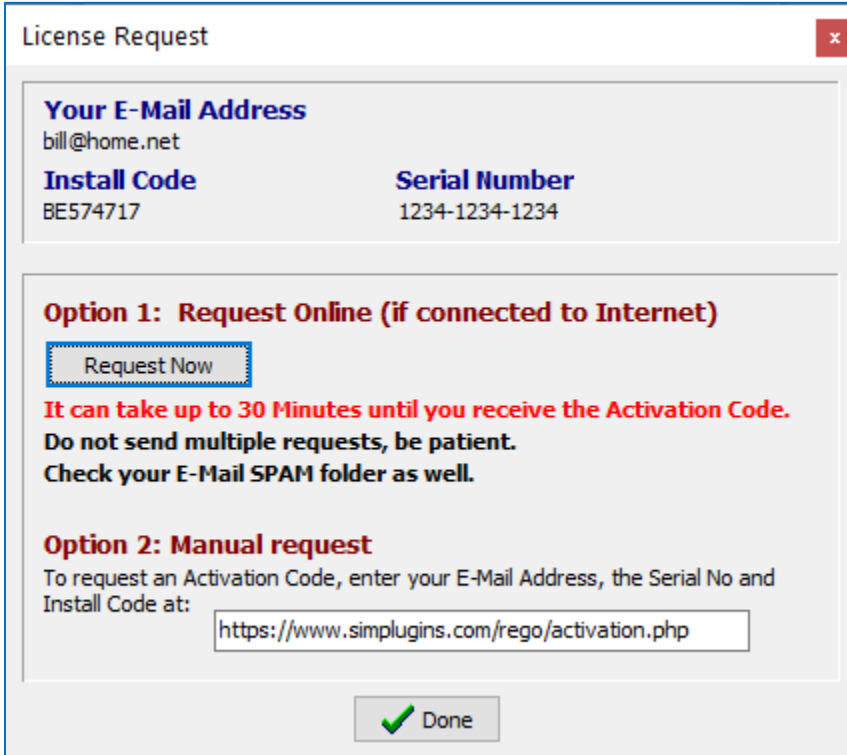
The following message appears. You have 2 options, either click on [Request Now]. This will send the request directly.

Or if you are not connected to the Internet, make a note of your E-Mail Address, the Install Code and the Serial Number as displayed and go to

<https://www.simplugins.com/reg/activation.php>

on another computer and enter the information as required to request your Activation Code.

Click on [Done] and [Done] again. You can use Panel Builder in Demo mode until you receive the activation code.



License Request

Your E-Mail Address
bill@home.net

Install Code **Serial Number**
BE574717 1234-1234-1234

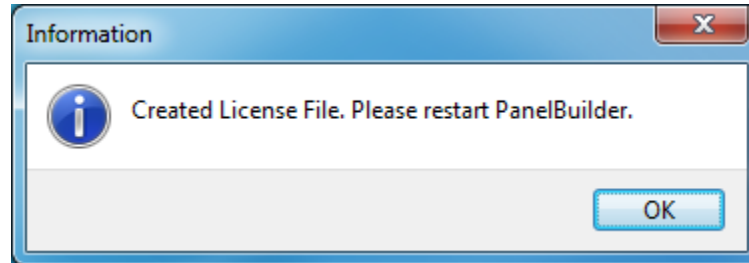
Option 1: Request Online (if connected to Internet)

It can take up to 30 Minutes until you receive the Activation Code.
Do not send multiple requests, be patient.
Check your E-Mail SPAM folder as well.

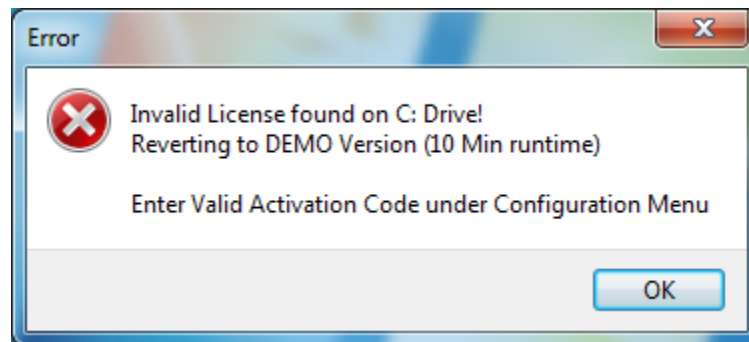
Option 2: Manual request
To request an Activation Code, enter your E-Mail Address, the Serial No and Install Code at:

Step 2 - Entering the Activation Code

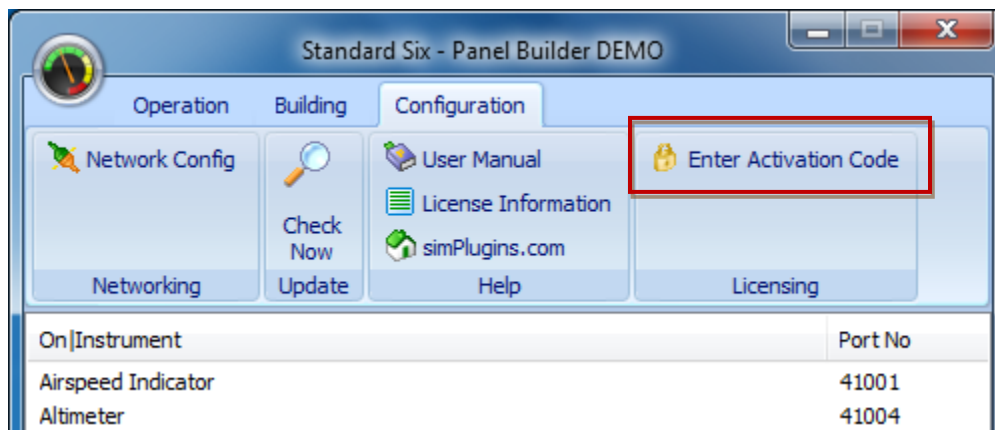
Once you receive your Activation Code via e-mail, start Panel Builder and click [Yes] on the License check screen. This time enter the received Activation Code under Step 2 and click the Activate Button. You will receive a message that the license has been generated.



If you made a mistake entering the code, the next time Panel Builder starts, you might get the following message:



Click in the [OK] Button and re-enter the code in the Configuration Menu under 'Enter Activation Code'



Integration Scenarios

This section describes different scenarios Panel Builder can be used with. Each scenario requires different installation procedures and network configuration.

There are three distinct scenarios. The number of monitors attached on a computer does not affect any installation or configuration options if the multiple monitors are configured to expand the desktop area (virtual desktop across multiple monitors).

Single Computer - Single or multiple Monitors

Diagram



Computer 1 - Flight Simulator & Instruments

Module Selection

Computer	Flight Simulator Installed	Panel Builder Modules Required
Computer 1	X-Plane	X-Plane Interface Panel Builder
	Microsoft Flight Simulator X	MS Flight Simulator X Interface Panel Builder
	Microsoft Flight Simulator 2004 (or older)	FSUIPC Interface Panel Builder
	Lockheed Martin Prepar3D	Prepar3D Interface Panel Builder

Two computers - Single or multiple monitors

Diagram



Computer 1 - Flight Simulator



Computer 2 - Instruments

Module Selection

Computer	Flight Simulator Installed	Panel Builder Modules Required
Computer 1	X-Plane	X-Plane Interface
	Microsoft Flight Simulator X	MS Flight Simulator X Interface
	Microsoft Flight Simulator 2004	FSUIPC Interface
	Lockheed Martin Prepar3D	Prepar3D Interface
Computer 2	-	Panel Builder

Multiple computers - Single or multiple monitors

Diagram



Computer 1 - Flight Simulator



Computer 2 - Instruments Pilot



Computer 3 - Instruments Co-Pilot

Module Selection

Computer	Flight Simulator Installed	Panel Builder Modules Required
Computer 1	X-Plane	X-Plane Interface
	Microsoft Flight Simulator X	MS Flight Simulator X Interface
	Microsoft Flight Simulator 2004	FSUIPC Interface
	Lockheed Martin Prepar3D	Prepar3D Interface
Computer 2	-	Panel Builder
Computer 3	-	Panel Builder

Note: Running Panel Builder on multiple computers requires a license for each computer you are running Panel Builder on.

Installation Procedures

Panel Builder is installed using a multi-step process. The installer software is installed first which allows the selection of the different modules to be installed on each computer (or on a single computer). The different modules are:

- Panel Builder
- X-Plane 9 Interface (X-Plane 9 and 10.1)
- X-Plane 10 Interface (X-Plane 10.2 or greater)
- X-Plane 11 Interface (X-Plane 11.0 or greater)
- FSX Interface - simConnect
- FSUIPC Interface for FSX - FSUIPC V4.X
- Prepar3D Interface (V3 - 5) - simConnect
- FSUIPC Interface for Prepar3D (V2 - V5) - FSUIPC V4 and/or FSUIPC V6
- Condor Interface
- Dodosim 206 Interface
- A2A FSUIPC/LUA Interface

Depending on the Panel Builder and Flight Simulator you are using, choose the appropriate interface module in Step 2.

Step 1

Install the Panel Builder Install package on each computer that will be part of the overall Flight Simulator System.

If you are installing from the supplied license USB Key, you can run the installer directly on the USB Key and can skip this step. Locate the USB key in Windows Explorer and double-click on *PanelBuilderInstaller*

Step 2

Run the Panel Builder Installer on each computer and choose which modules should be installed on each computer. The selection of modules is dependent on the integration scenario applicable to your simulator system as described in the previous chapter.

Step 3

Configure each interface module of Panel Builder for:

- Networking
- Performance

This step is optional. All modules have been preconfigured (even the networking!) and no changes are necessary, except the Condor Interface. Follow the instructions in the Condor chapter

Step 4

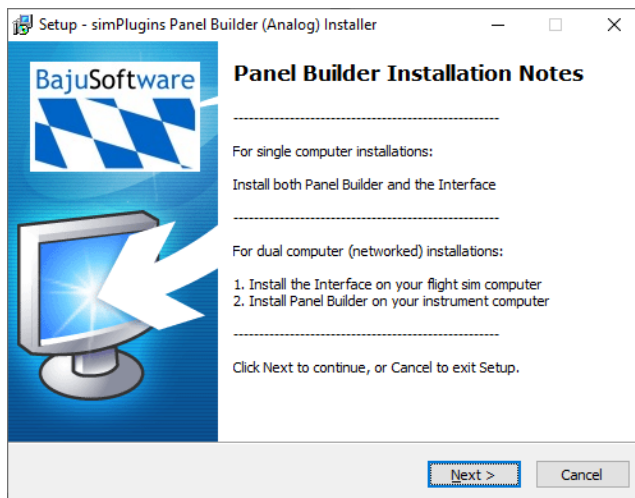
Configure Panel Builder

Step 1 - Install Panel Builder and Interface(s)

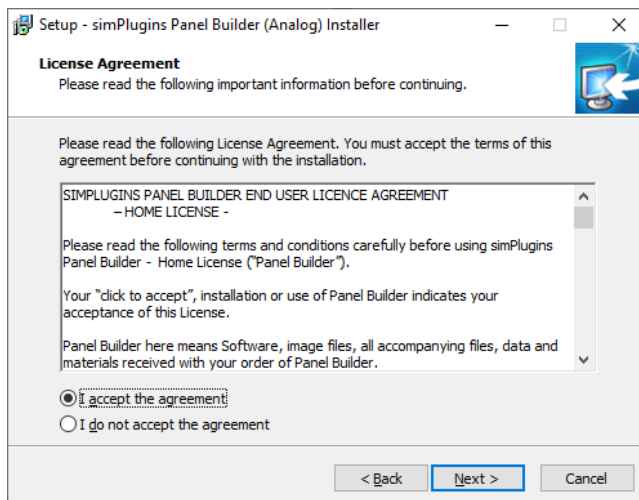
Copy the installation package to each computer that is part of your flight simulation system. If you have purchased a USB License, insert the USB key into your computer(s).

In the example below, we are installing Panel Builder Analog. All other Panel Builder versions install the same way.

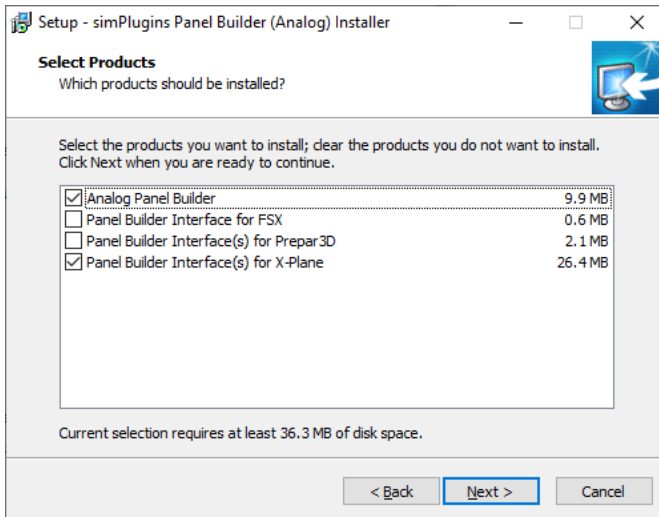
Start the installation program on each computer by locating the installation program and double click it. This will launch the installation.



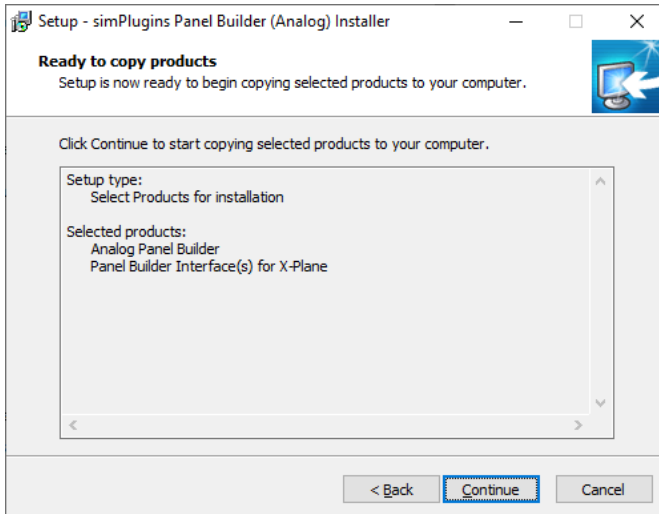
Read the installation notes, then click [Next >].



Read the License agreement (either Home or Commercial Version). In order to proceed you need to accept the license agreement. Click on [Next >].



Select what parts of Panel Builder to install. Click [Next >].



Here it shows you what you have selected in the previous step. Click on [Continue], otherwise go back to change your selection.

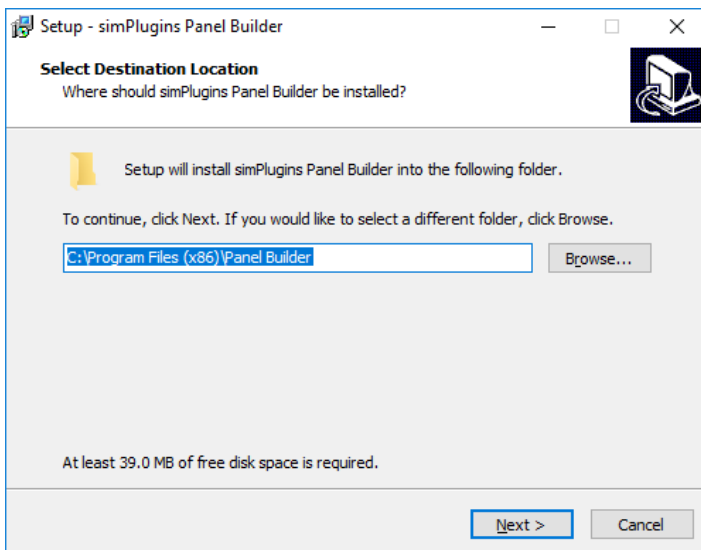
Depending on your selection, the next step will copy the Panel Builder parts that you have selected. Once done, the following screen will allow to continue with the installation. Check the products that you want to install (this is typically the same as before):



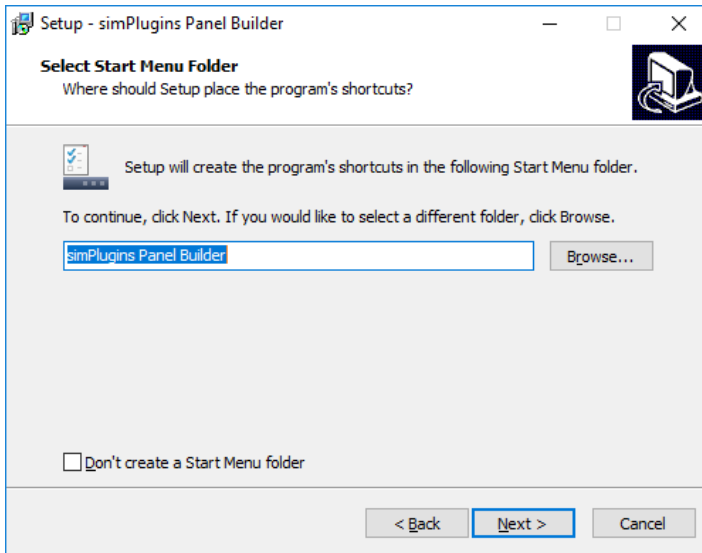
All parts you have selected previously are checked by default. Click [Continue]

Panel Builder

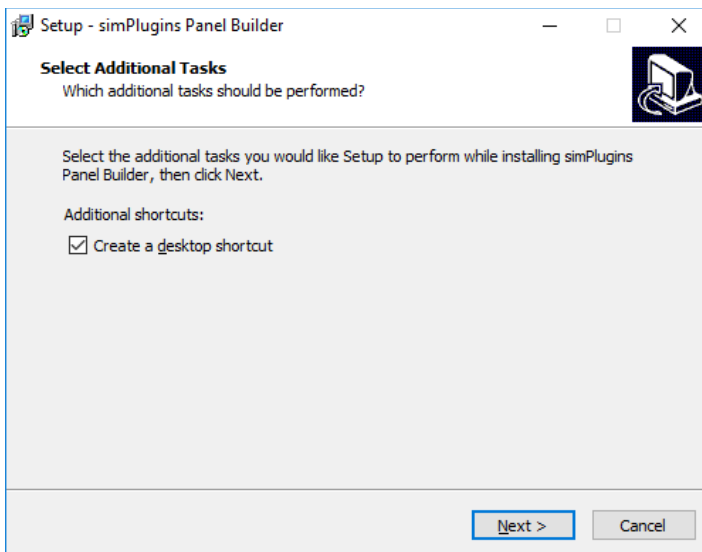
If you have Panel Builder selected, the following screen will appear:



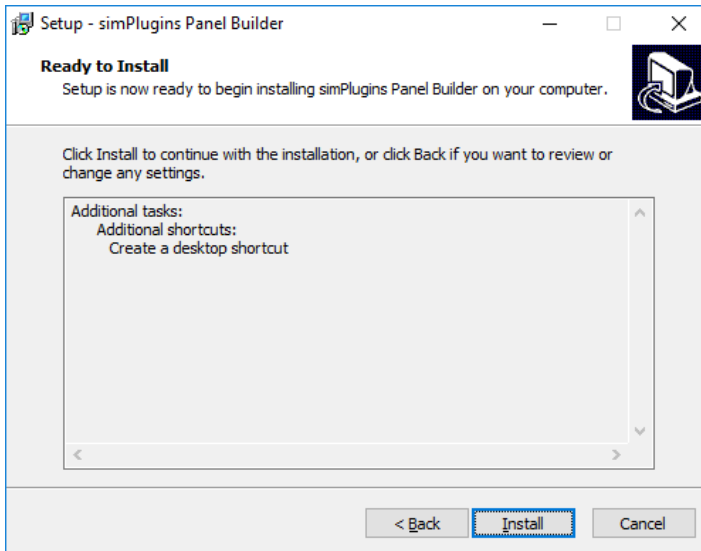
Select a folder where Panel Builder is installed into. Click on [Next >]



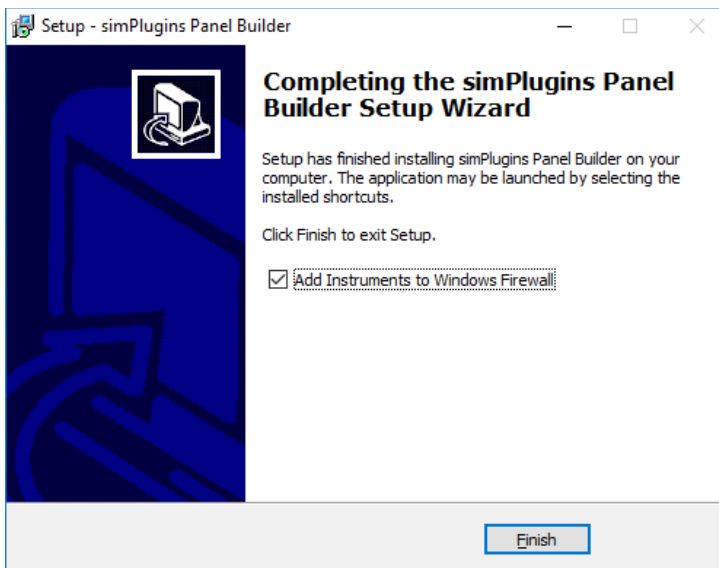
Enter a start menu folder name, or accept the default. Click on [Next >]



If you want a desktop shortcut (recommended), leave the box checked. Then click on [Next].



This is the confirmation screen for the options you have chosen. Click on the [Install] button to install Panel Builder.

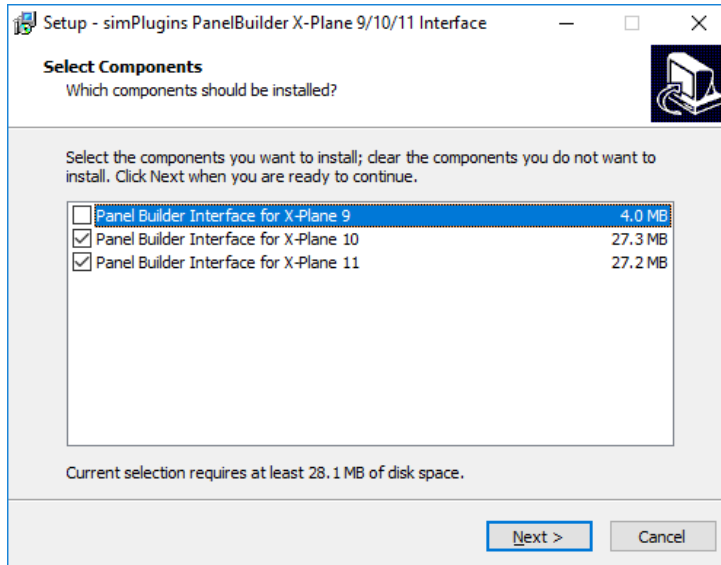


After the Panel Builder installation has finished, the instruments need to be added to the Windows Firewall. Make sure that this option is checked, otherwise the instruments will not work!

Click on [Finish] to complete the installation.

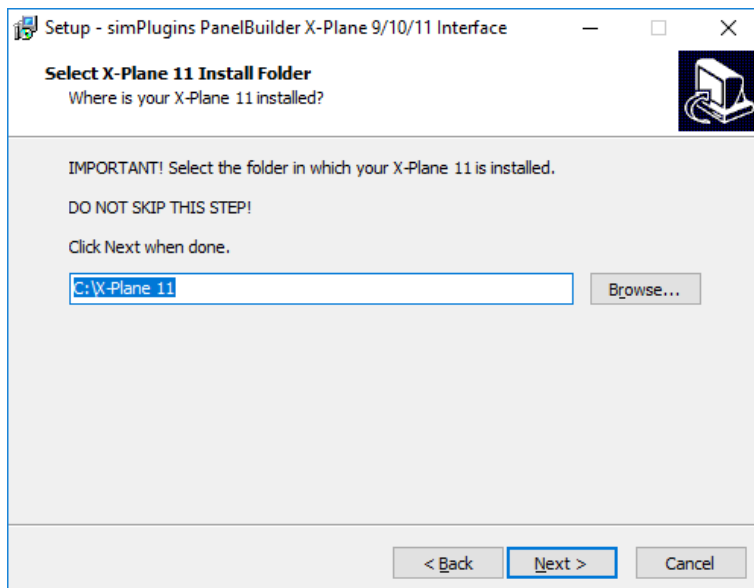
Panel Builder Interface(s)

If you have selected to install the Panel Builder Interface(s), the installation for the interfaces will start. Our example shows the X-Plane Interface installation. Other interface installations are very similar but have other options available.

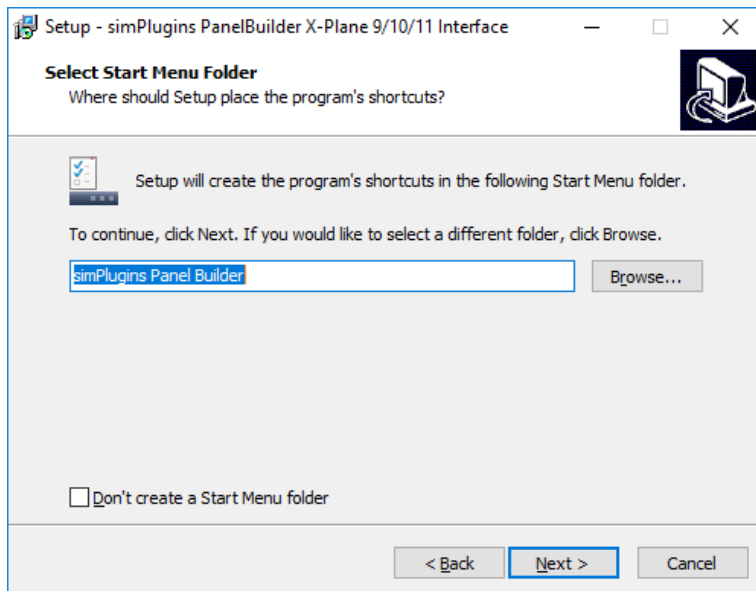


Select the Interfaces that you want to install, then click [Next >].

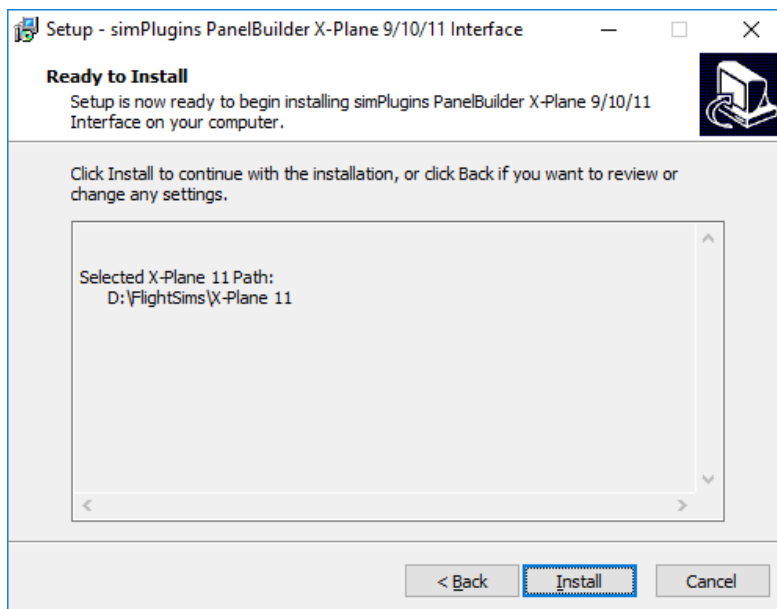
The X-Plane Interfaces require that you locate your main X-Plane folder:



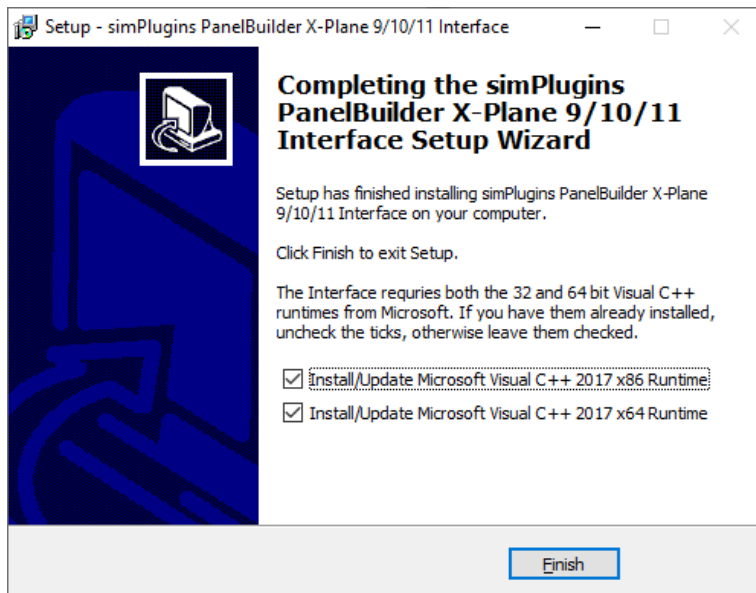
Use the [Browse...] button to locate the top level folder. Then click on [Next >]. Your selection will be verified. If you want a mistake you will get prompted to try again.



This step allows you to specify a name for the Start Menu folder. You can accept the fault and click on [Next >].

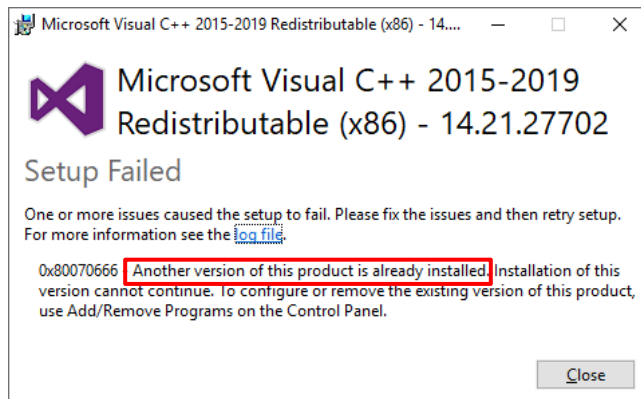


Here is the summary of the options you selected. Click on [Install].



After the install finishes, additional software required will be prompted for to be installed. For X-Plane those are the C++ runtimes as shown above. If you know you have them already installed (from a previous install for example), you can un-check the boxes. Otherwise click on [Finish].

If you leave the boxes checked and the C++ libraries are already installed, you get an error message:



In this case, just click on [Close]. You might get this message again for the second C++ library.

This finishes the Panel Builder installation.

If you have a networked simulator system, repeat the procedure and select the appropriate features.

Different installations options will appear depending on the interface selected (for FSX, Prepared etc.). Just follow the instructions. Accepting the default will always work.

You can skip the network configuration. There is no need to change any values; the defaults should work in 99% of all installations.

Step 2 - Network Configuration

All modules of Panel Builder communicate using a network protocol. The Interface software receives data from the flight simulator and sends the appropriate data to each instrument, either on the same computer or to additional computers. Even if both the flight simulator software and Panel Builder is installed on the computer, communication is still performed using the network protocol.

Each Flight Simulator Interface and Panel Builder has a configuration screen for setting networking parameters. Following the scenarios described in previous chapters, each scenario has a different network configuration.

Furthermore, network configuration requires also port numbers for each component of Panel Builder, including Instruments. Port Numbers use a default setting after installation of Panel Builder and will not need to be changed in most cases. There are circumstances where a port number is already in use by a different program than Panel Builder. In this case the port number will need to be changed to a different value.

In summary, there is no network configuration necessary after the installation.

All components of Panel Builder have been preset and those values should work for 99% of all installations. The following pages are for your information and in the rare case where you need to make changes to the network.

What is a Multicast Group Address?

A Multicast Group Address is a special IP Address that has been reserved for performing communications between groups of programs. It works like a subscription where all programs wanting to communicate with each user subscribe to the same Group Address.

In order to support more than one instrument computer and to allow multiple use of an instrument in the same panel, the multicast broadcasting scheme is used. A *Multicast Group Address* has to be set in the flight simulator interface programs and Panel Builder. The Multicast Group Address is an address that all parts of Panel Builder communicate through on your network.

The Multicast Group Address is the same for all Interfaces and Panel Builder. There is a fixed range of valid addresses. They are in the range between

224.0.0.0 and 239.255.255.255

Panel Builder and all Interfaces have been preset to **224.11.5.62**. This does not need to be changed unless you have another program using this address, which is highly unlikely.

Changing the Multicast Group Address - Write down your value.

Computer	Default	Your Value
<i>Multicast Group Address</i>	<i>224.11.5.62</i>	

This address needs to match in each module of Panel Builder, the Interfaces and Panel Builder itself.

The address has to be in the range of 224.0.0.0 and 239.255.255.255 . Choose any address within the valid range and make a note of it above.

Continue in the next chapters with Interface Configuration and Panel Builder Configuration.

Changing Port Numbers - Default values are shown. Typically use those values. If you need to change them, make a note in the last column

Module	Name	Default Port Number	Your Port Number
Panel Builder	Listen Port	48000	
X-Plane Interface	Receive Port Number	45000	
FSX Interface	Receive Listening Port	45000	
FSUIPC Interface	Receive Listening Port	45000	
Prepar3D Interface	Receive Listening Port	45000	

Instrument Port Numbers are listed in the Instrument Reference Section of this manual.

Continue with the next chapter to configure all modules of Panel Builder and refer back to both tables above to help with the configuration.

Step 3 - Interface Configuration

X-Plane 9 Interface (for X-Plane 9 and X-Plane 10.1)

There is no need to change any network values; the defaults should work in 99% of all installations.

The plugins for x-plane were installed in the previous step under your X-Plane folder

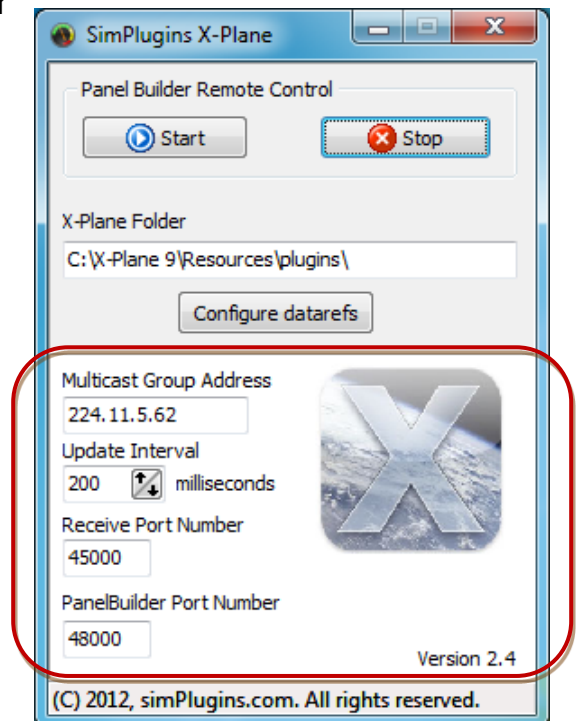
```
C:\X-Plane 9\Resources\plugins
```

There are 4 files, 2 plugins and 2 configuration files for the plugins.

- InstrumentPlugin.xpl
- InstrumentPlugin.ini
- InstrumentReceiver.ini
- InstrumentReceiver.xpl

Start the Application 'simPlugins X-Plane'.

This application is located on your flight simulator PC where X-Plane is installed on. There is an icon on the desktop for it.



X-Plane Folder

this is the folder where the X-Plane plugin is installed

Multicast Group Address

the **broadcast address** for the network of your flight simulator system. 224.11.5.62 is the default. No need to change it unless you have another program using it.

Update Interval

How often X-Plane sends data to the Instruments PC

Receive Port Number

The port number the interface listens on for data received from Instruments. 45000 is the default.

Panel Builder Port Number

The listening port as configured in Panel Builder

X-Plane 10 Interface (for X-Plane 10.20 or greater)

There is no need to change any network values; the defaults should work in 99% of all installations.

The plugins for X-Plane were installed under

```
...\X-Plane 10\resources\plugins
```

There are several configuration files for the plugin.

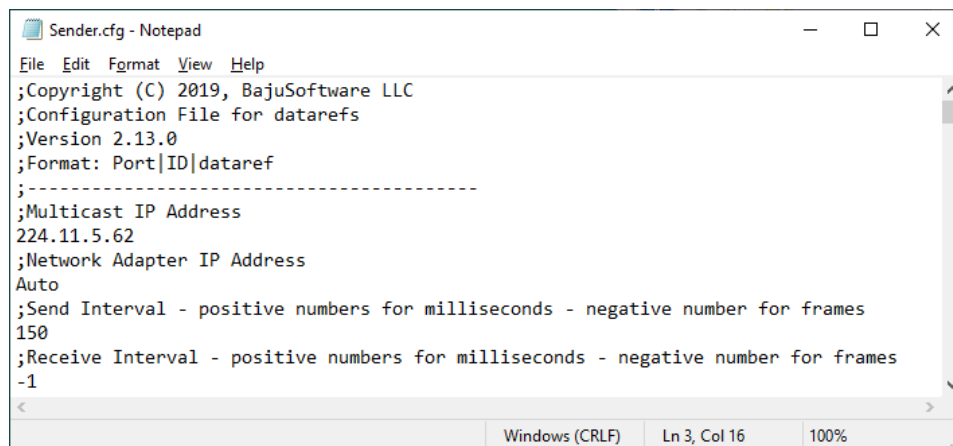
In folder ...\X-Plane 10\resources\plugins\PanelBuilder

<i>Sender.cfg</i>	<i>X-Plane send dataref values</i>
<i>ReceiverCMD.cfg</i>	<i>X-Plane receive commands (momentary)</i>
<i>ReceiverCMDTOG.cfg</i>	<i>X-Plane receive commands (toggle)</i>
<i>ReceiverDAT.cfg</i>	<i>X-Plane receive datarefs</i>

In folder ...\X-Plane 10\resources\plugins\PanelBuilderFast

<i>ReceiverDAT.cfg</i>	<i>X-Plane receive values for datarefs (fast execution like dials)</i>
------------------------	--

The first part of the network settings is in Sender.cfg:



```
Sender.cfg - Notepad
File Edit Format View Help
;Copyright (C) 2019, BajusSoftware LLC
;Configuration File for datarefs
;Version 2.13.0
;Format: Port|ID|dataref
;
;-----
;Multicast IP Address
224.11.5.62
;Network Adapter IP Address
Auto
;Send Interval - positive numbers for milliseconds - negative number for frames
150
;Receive Interval - positive numbers for milliseconds - negative number for frames
-1
Windows (CRLF) Ln 3, Col 16 100%
```

Multicast IP Address

the **broadcast address** for the network of your flight simulator system. 224.11.5.62 is the default. No need to change it unless you have another program using it.

Network Adapter IP Address

Auto - Windows selects which adapter to use.

Alternatively enter the IP address of the specific network adapter you want to use (if you have more than one).

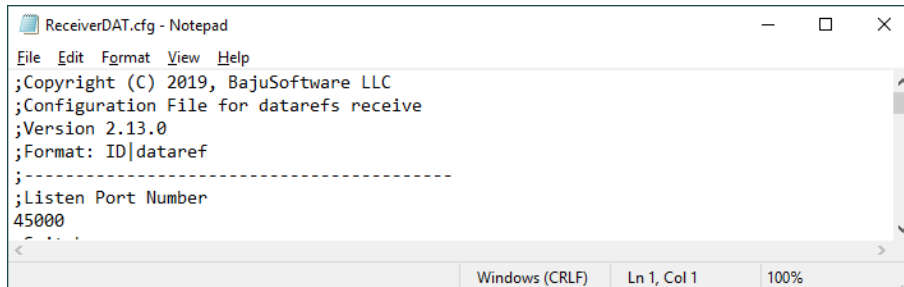
Send Interval

How often X-Plane sends data to the Instrument PC in Milliseconds (Default = 150 milliseconds)

Receive Interval

How often X-Plane processes received data. Default -1 (every frame). Do not change unless instructed to do so.

The rest is in ReceiverDAT.cfg (under *PanelBuilder*)

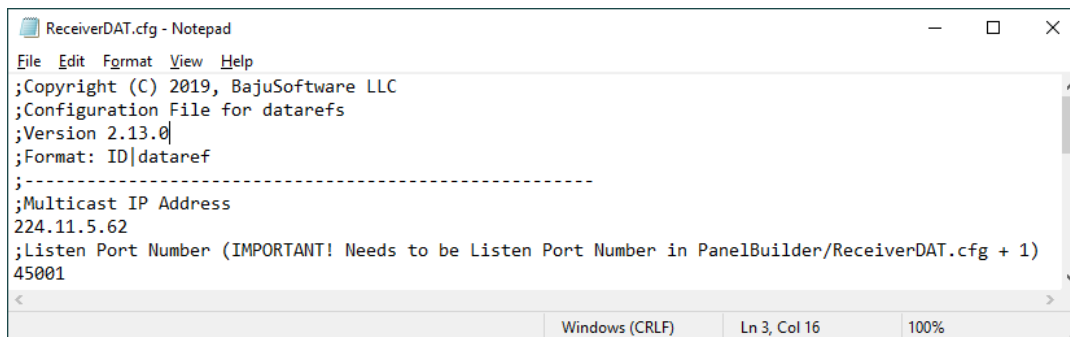


```
ReceiverDAT.cfg - Notepad
File Edit Format View Help
;Copyright (C) 2019, BajuSoftware LLC
;Configuration File for datarefs receive
;Version 2.13.0
;Format: ID|dataref
;-----
;Listen Port Number
45000
Windows (CRLF) Ln 1, Col 1 100%
```

Listen Port Number

The port number the interface listens on for data received from Instruments. 45000 is the default.

and ReceiverDAT.cfg (under *PanelBuilderFast*)



```
ReceiverDAT.cfg - Notepad
File Edit Format View Help
;Copyright (C) 2019, BajuSoftware LLC
;Configuration File for datarefs
;Version 2.13.0
;Format: ID|dataref
;-----
;Multicast IP Address
224.11.5.62
;Listen Port Number (IMPORTANT! Needs to be Listen Port Number in PanelBuilder/ReceiverDAT.cfg + 1)
45001
Windows (CRLF) Ln 3, Col 16 100%
```

Multicast IP Address

the **broadcast address** for the network of your flight simulator system. 224.11.5.62 is the default. No need to change it unless you have another program using it.

Receive Port Number

The port number the interface listens on for data received from Instruments. 45001 is the default.

X-Plane 11 Interface

There is no need to change any network values; the defaults should work in 99% of all installations.

The plugins for X-Plane were installed under

```
...\X-Plane 11\resources\plugins
```

There are several configuration files for the plugin.

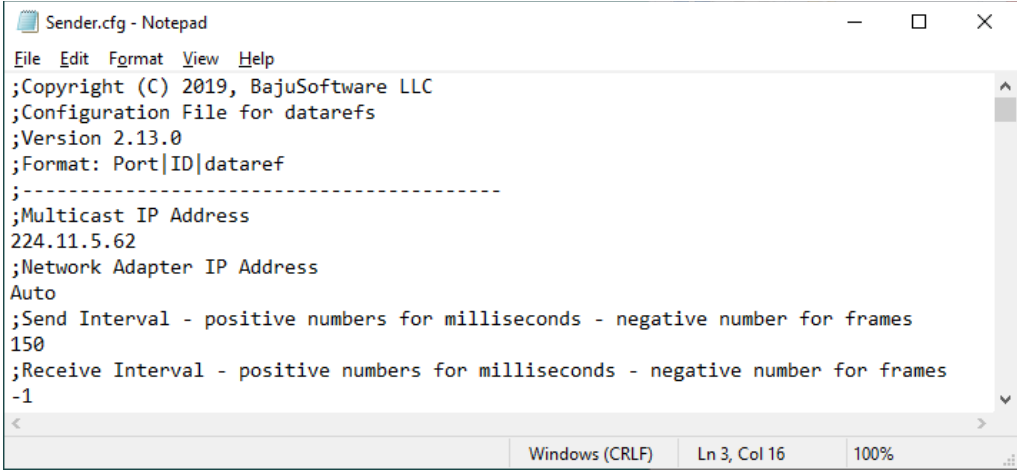
In folder ...\X-Plane 11\resources\plugins\PanelBuilder

<i>Sender.cfg</i>	<i>X-Plane send dataref values</i>
<i>ReceiverCMD.cfg</i>	<i>X-Plane receive commands (momentary)</i>
<i>ReceiverCMDTOG.cfg</i>	<i>X-Plane receive commands (toggle)</i>
<i>ReceiverDAT.cfg</i>	<i>X-Plane receive datarefs</i>

In folder ...\X-Plane 11\resources\plugins\PanelBuilderFast

<i>ReceiverDAT.cfg</i>	<i>X-Plane receive values for datarefs (fast execution like dials)</i>
------------------------	--

The first part of the network settings is in Sender.cfg:



```
Sender.cfg - Notepad
File Edit Format View Help
;Copyright (C) 2019, BajusSoftware LLC
;Configuration File for datarefs
;Version 2.13.0
;Format: Port|ID|dataref
;-----
;Multicast IP Address
224.11.5.62
;Network Adapter IP Address
Auto
;Send Interval - positive numbers for milliseconds - negative number for frames
150
;Receive Interval - positive numbers for milliseconds - negative number for frames
-1
Windows (CRLF) Ln 3, Col 16 100%
```

Multicast IP Address

the **broadcast address** for the network of your flight simulator system. 224.11.5.62 is the default. No need to change it unless you have another program using it.

Network Adapter IP Address

Auto - Windows selects which adapter to use.

Alternatively enter the IP address of the specific network adapter you want to use (if you have more than one).

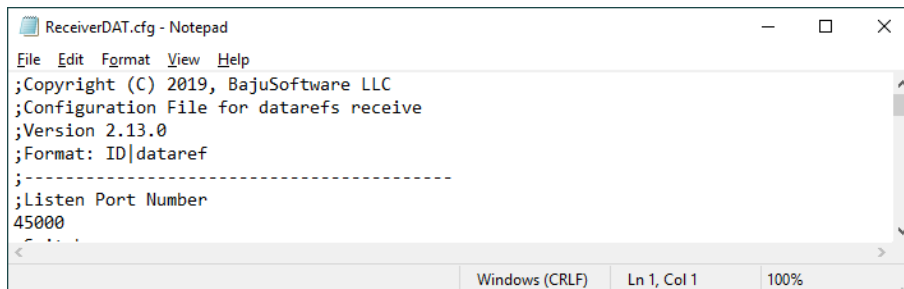
Send Interval

How often X-Plane sends data to the Instrument PC in Milliseconds (Default = 150 milliseconds)

Receive Interval

How often X-Plane processes received data. Default -1 (every frame). Do not change unless instructed to do so.

The rest is in ReceiverDAT.cfg (under *PanelBuilder*)

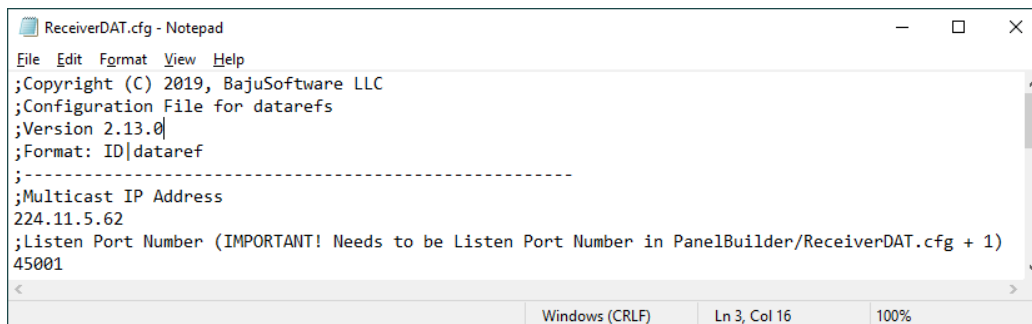


```
ReceiverDAT.cfg - Notepad
File Edit Format View Help
;Copyright (C) 2019, BajuSoftware LLC
;Configuration File for datarefs receive
;Version 2.13.0
;Format: ID|dataref
;-----
;Listen Port Number
45000
Windows (CRLF) Ln 1, Col 1 100%
```

Listen Port Number

The port number the interface listens on for data received from Instruments. 45000 is the default.

and ReceiverDAT.cfg (under *PanelBuilderFast*)



```
ReceiverDAT.cfg - Notepad
File Edit Format View Help
;Copyright (C) 2019, BajuSoftware LLC
;Configuration File for datarefs
;Version 2.13.0
;Format: ID|dataref
;-----
;Multicast IP Address
224.11.5.62
;Listen Port Number (IMPORTANT! Needs to be Listen Port Number in PanelBuilder/ReceiverDAT.cfg + 1)
45001
Windows (CRLF) Ln 3, Col 16 100%
```

Multicast IP Address

the **broadcast address** for the network of your flight simulator system. 224.11.5.62 is the default. No need to change it unless you have another program using it.

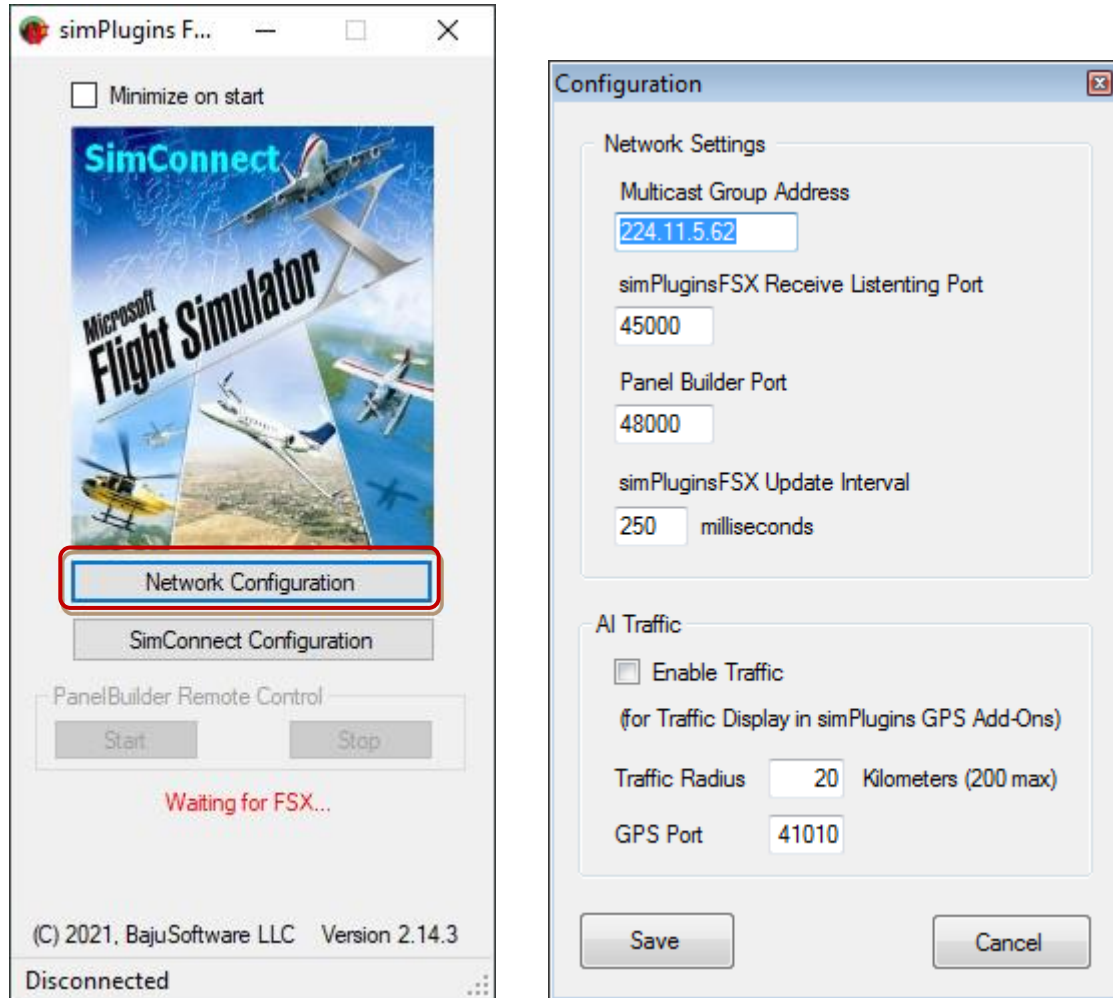
Receive Port Number

The port number the interface listens on for data received from Instruments. 45001 is the default.

MS Flight Simulator X SimConnect Interface

There is no need to change any network values; the defaults should work in 99% of all installations.

Launch the simPluginsFSX program.



Click on the [Network Configuration] Button.

Multicast Group Address is the **broadcast IP address** of the network of your flight simulator system. (Default: 224.11.5.62)

simPluginsFSX Receive Listening Port specifies the port number the simPluginsFSX Interface 'listens' on. This is used for receiving settings from the instruments for example setting the barometer in the Altimeter. This setting has to match what has been configured under *Setting the Flight Simulator IP Address* in chapter *Panel Builder Configuration*.

Panel Builder Port is the listening port as configured in Panel Builder.

The *simPluginsFSX Update Interval* specifies how often the data is updated to the instruments in milliseconds. Here it is 250 milliseconds.

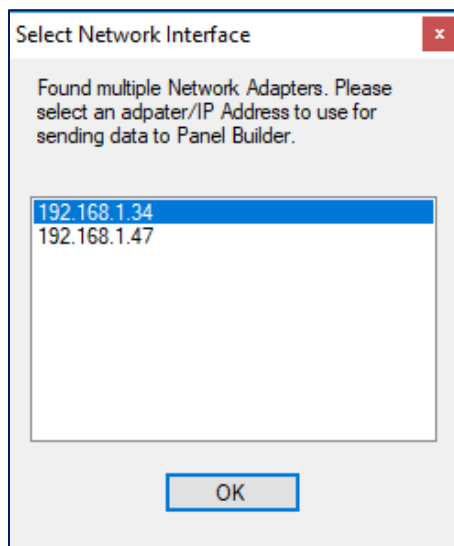
AI Traffic specifies whether to enable AI Traffic output through the interface. You only need to enable this if you use any Panel Builder Add-Ons that provide traffic information.

Click on [Save] to save the settings.

The Interface will connect automatically to the Flight Simulator.

Multiple Network Adapter Support

As of version 2.10.1, the interface supports multiple network adapters that might be present in your computer. If you have multiple network adapters, you need to specify which one to use for Panel Builder. When it connects for the first time, the interface will check and if there is more than one network adapter present, it will prompt you to select an adapter:



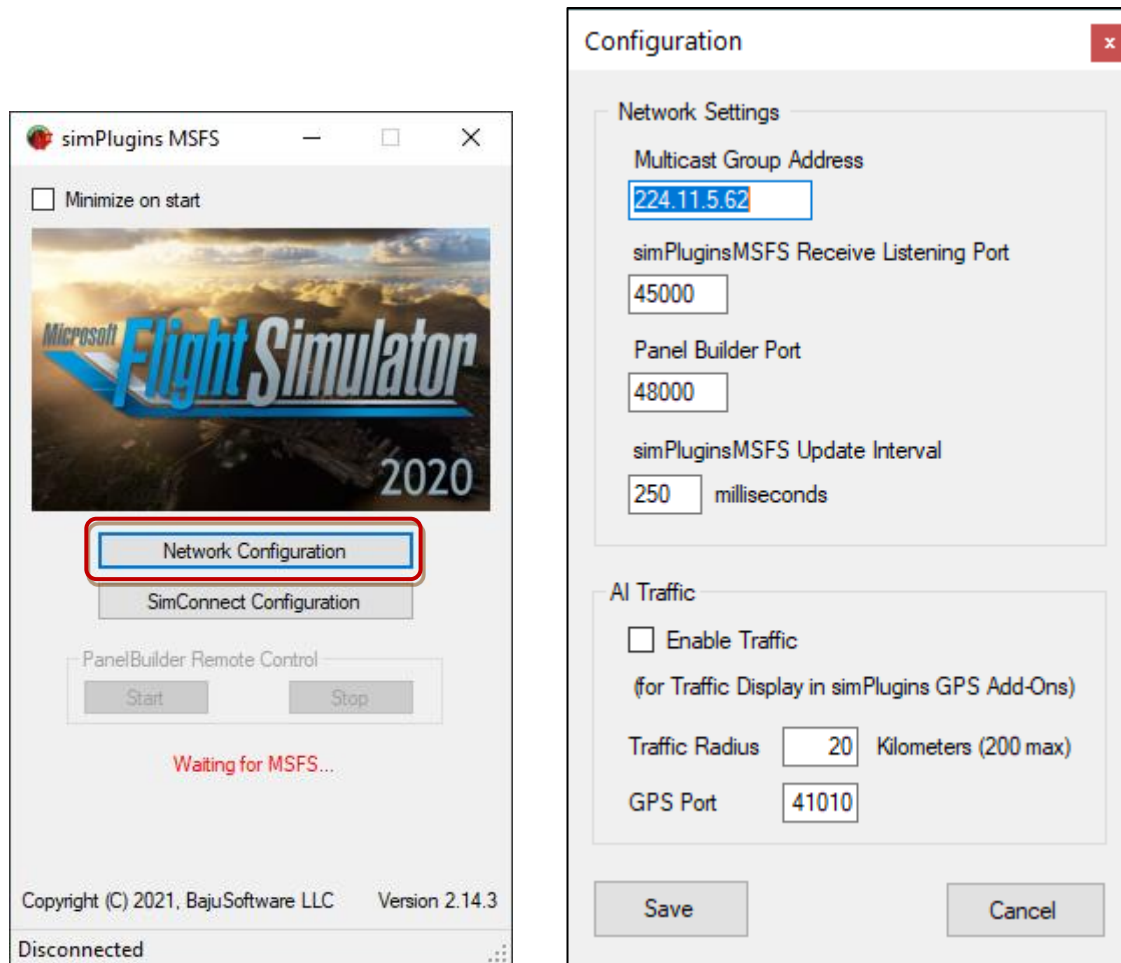
Select the correct adapter and click on [OK]. This saves the selection for the next time.

Note: if you have only one network adapter it chooses the correct one automatically without prompting you.

MS Flight Simulator 2020 SimConnect Interface

There is no need to change any network values; the defaults should work in 99% of all installations.

Launch the simPluginsMSFS program.



Click on the [Network Configuration] Button.

Multicast Group Address is the **broadcast IP address** of the network of your flight simulator system. (Default: 224.11.5.62)

simPluginsMSFS Receive Listening Port specifies the port number the simPluginsMSFS Interface 'listens' on. This is used for receiving settings from the instruments for example setting the barometer in the Altimeter. This setting has to match what has been configured under **Setting the Flight Simulator IP Address** in chapter **Panel Builder Configuration**.

Panel Builder Port is the listening port as configured in Panel Builder.

The *simPluginsMSFS Update Interval* specifies how often the data is updated to the instruments in milliseconds. Here it is 250 milliseconds.

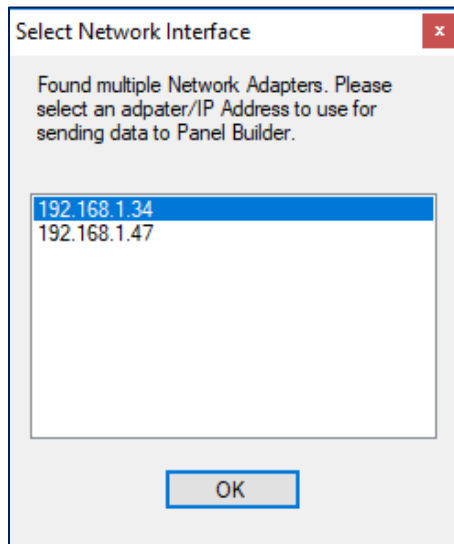
AI Traffic specifies whether to enable AI Traffic output through the interface. You only need to enable this if you use any Panel Builder Add-Ons that provide traffic information.

Click on [Save] to save the settings.

The Interface will connect automatically to the Flight Simulator.

Multiple Network Adapter Support

As of version 2.10.1, the interface supports multiple network adapters that might be present in your computer. If you have multiple network adapters, you need to specify which one to use for Panel Builder. When it connects for the first time, the interface will check and if there is more than one network adapter present, it will prompt you to select an adapter:



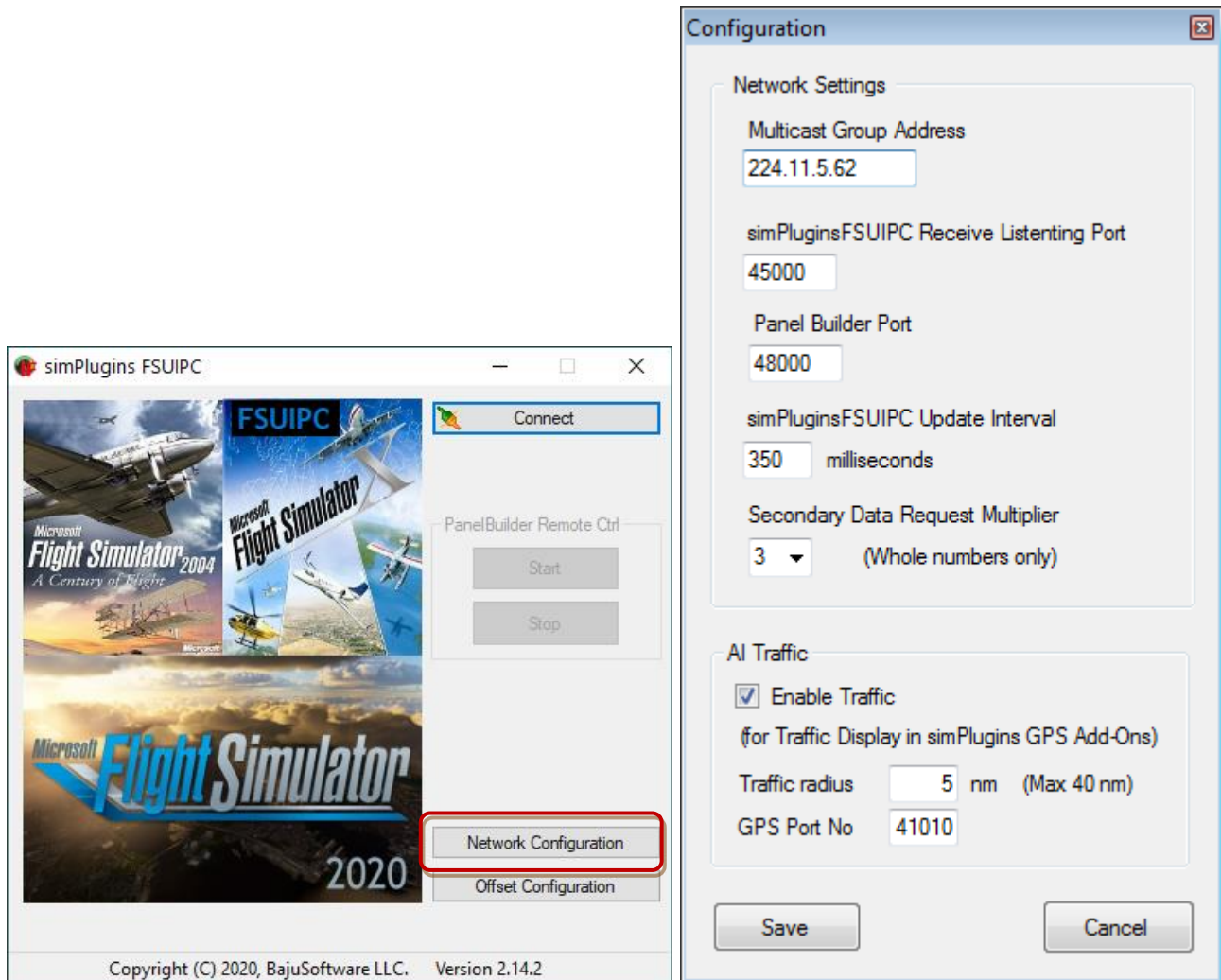
Select the correct adapter and click on [OK]. This saves the selection for the next time.

Note: if you have only one network adapter it chooses the correct one automatically without prompting you.

MS Flight Simulator FSUIPC Interface

There is no need to change any network values; the defaults should work in 99% of all installations.

Launch the simPluginsFSUIPC program.



Click on the [Network Configuration] Button.

Multicast Group Address is the **broadcast IP address** of the network of your flight simulator system. (Default: 224.11.5.62)

simPluginsFSUIPC Receive Listening Port specifies the port number the simPlugins FSUIPC Interface 'listens' on. This is used for receiving settings from the instruments for example setting the barometer in the Altimeter. This setting has to match what has been configured under *Setting the Flight Simulator IP Address* in chapter *Panel Builder Configuration*.

Panel Builder Port is the listening port as configured in Panel Builder.

The *simPluginsFSUIPC Update Interval* specifies how often the data is updated to the instruments in milliseconds. Here it is 250 milliseconds.

Secondary Data Request Multiplier specifies the update interval for less frequent instrument updates. It multiplies the Update Interval by the entered value.

AI Traffic specifies whether to enable AI Traffic output through the interface. You only need to enable this if you use any Panel Builder Add-Ons that provide traffic information.

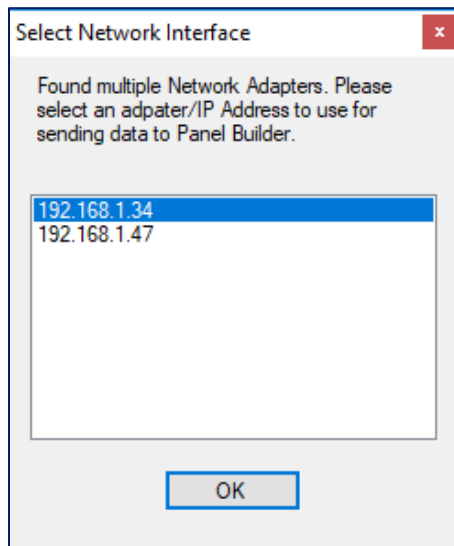
Click on [Save] to save the settings.

Start MS-Flight Simulator then click on the [Connect] button in simPluginsFSUIPC. The Interface is now ready. Note: Microsoft Flight Simulator has to be running!

There is a command line option called 'start' that allows automatic connect on program startup.

Multiple Network Adapter Support

As of version 2.10.1, the interface supports multiple network adapters that might be present in your computer. If you have multiple network adapters, you need to specify which one to use for Panel Builder. When you click [Connect] for the first time, the interface will check and if there is more than one network adapter present, it will prompt you to select an adapter:



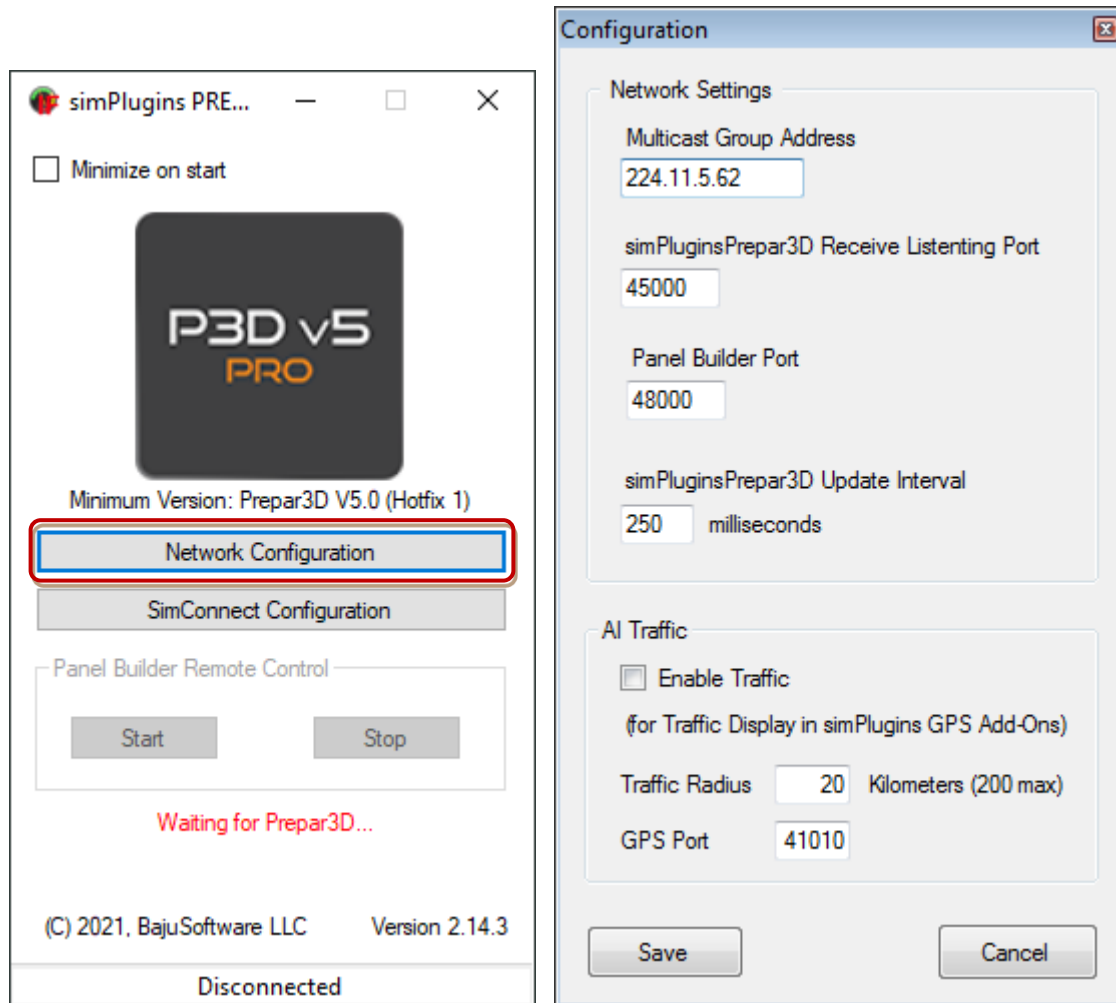
Select the correct adapter and click on [OK]. This saves the selection for the next time.

Note: if you have only one network adapter it chooses the correct one automatically without prompting you.

Lockheed Martin Prepar3D SimConnect Interface (V3,V4,V5)

There is no need to change any network values; the defaults should work in 99% of all installations.

Launch the simPluginsPrepar3D V3, simPluginsPrepar3D V4 or simPluginsPrepar3D V5 program. (Older version interfaces look the same).



Click on the [Network Configuration] Button.

Multicast Group Address is the **broadcast IP address** of the network of your flight simulator system. (Default: 224.11.5.62)

simPluginsPrepar3D Receive Listening Port specifies the port number the simPluginsPrepar3D Interface 'listens' on. This is used for receiving settings from the instruments for example setting the barometer in the Altimeter. This setting has to match what has been configured under ***Setting the Flight Simulator IP Address*** in chapter ***Panel Builder Configuration***.

Panel Builder Port is the listening port as configured in Panel Builder.

The *simPluginsPrepar3D Update Interval* specifies how often the data is updated to the instruments in milliseconds. Here it is 250 milliseconds.

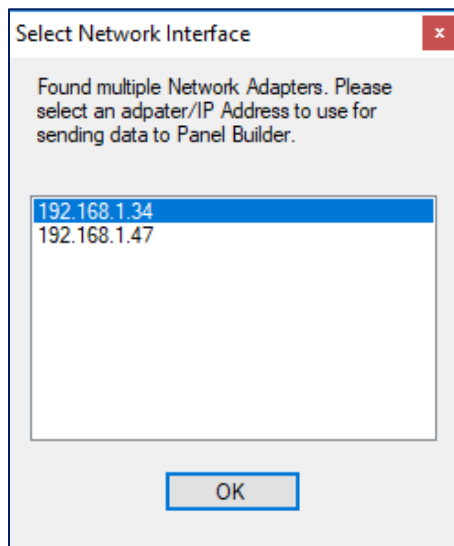
AI Traffic specifies whether to enable AI Traffic output through the interface. You only need to enable this if you use any Panel Builder Add-Ons that provide traffic information.

Click on [Save] to save the settings.

The Interface will connect automatically to the Flight Simulator.

Multiple Network Adapter Support

As of version 2.10.1, the interface supports multiple network adapters that might be present in your computer. If you have multiple network adapters, you need to specify which one to use for Panel Builder. When it connects for first time, the interface will check and if there is more than one network adapter present, it will prompt you to select an adapter:



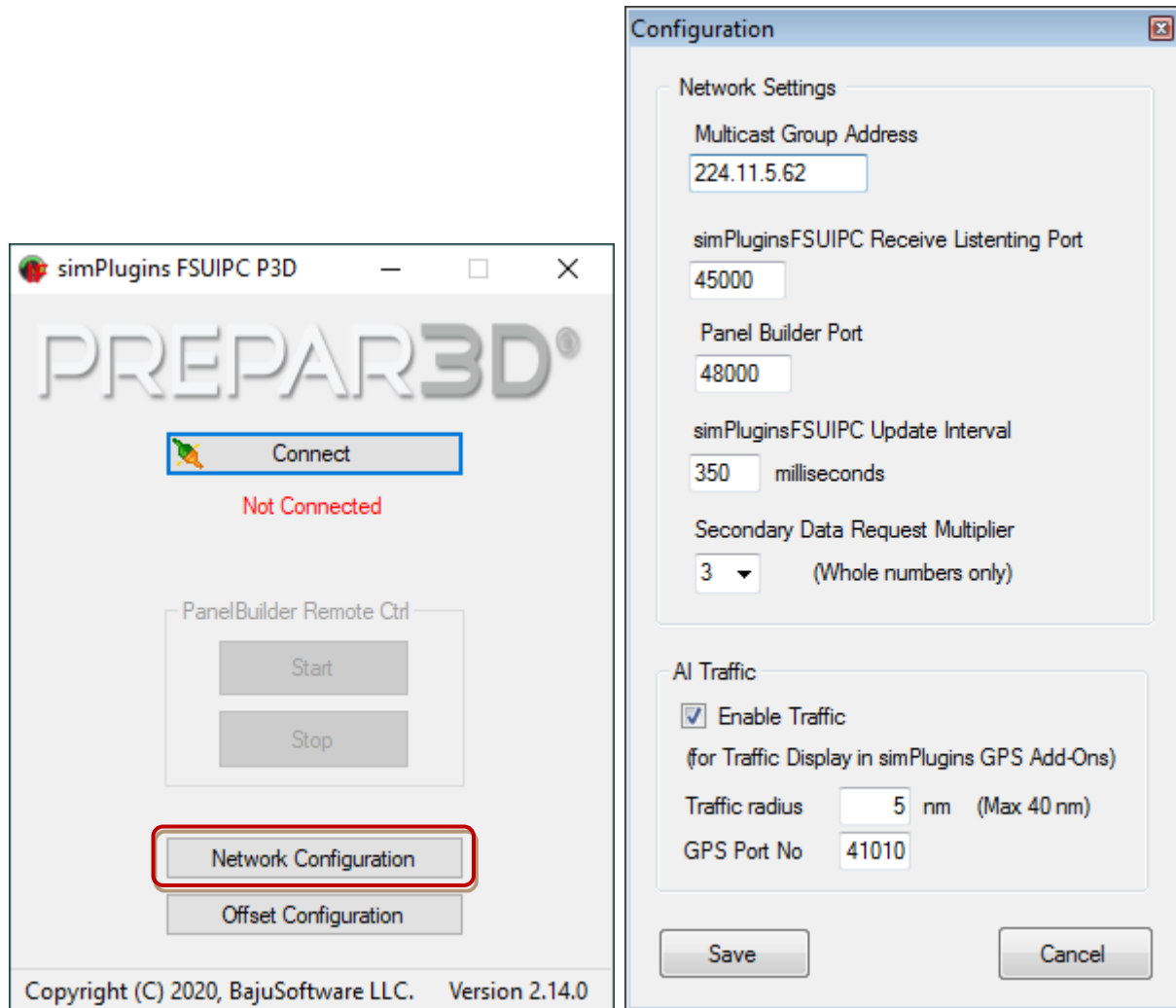
Select the correct adapter and click on [OK]. This saves the selection for the next time.

Note: if you have only one network adapter it chooses the correct one automatically without prompting you.

Lockheed Martin Prepar3D FSUIPC Interface (V2, V3, V4, V5)

There is no need to change any network values; the defaults should work in 99% of all installations.

Launch the simPlugins FSUIPC Prepar3D program.



Click on the [Network Configuration] Button.

Multicast Group Address is the **broadcast IP address** of the network of your flight simulator system. (Default: 224.11.5.62)

simPluginsFSUIPC Receive Listening Port specifies the port number the simPlugins FSUIPC Interface 'listens' on. This is used for receiving settings from the instruments for example setting the barometer in the Altimeter. This setting has to match what has been configured under ***Setting the Flight Simulator IP Address*** in chapter ***Panel Builder Configuration***.

Panel Builder Port is the listening port as configured in Panel Builder.

The *simPluginsFSUIPC Update Interval* specifies how often the data is updated to the instruments in milliseconds. Here it is 250 milliseconds.

Secondary Data Request Multiplier specifies the update interval for less frequent instrument updates. It multiplies the Update Interval by the entered value.

AI Traffic specifies whether to enable AI Traffic output through the interface. You only need to enable this if you use any Panel Builder Add-Ons that provide traffic information.

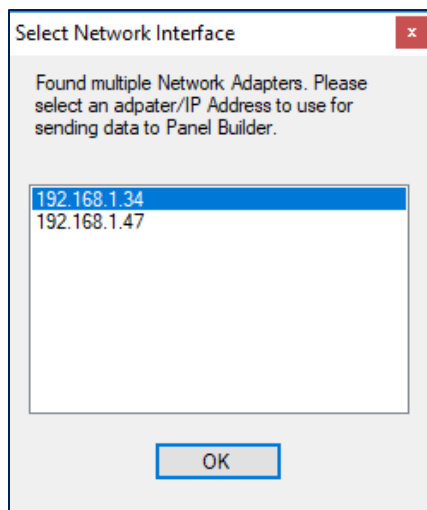
Click on [Save] to save the settings.

Start MS-Flight Simulator then click on the [Connect] button in simPluginsFSUIPC. The Interface is now ready. Note: Microsoft Flight Simulator has to be running!

There is a command line option called 'start' that allows automatic connect on program startup.

Multiple Network Adapter Support

As of version 2.10.1, the interface supports multiple network adapters that might be present in your computer. If you have multiple network adapters, you need to specify which one to use for Panel Builder. When you click [Connect] for the first time, the interface will check and if there is more than one network adapter present, it will prompt you to select an adapter:



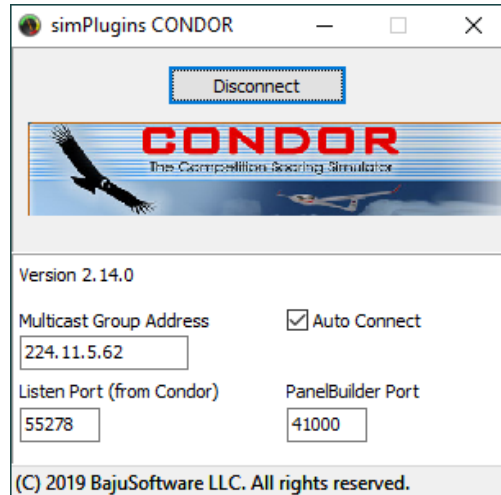
Select the correct adapter and click on [OK]. This saves the selection for the next time.

Note: if you have only one network adapter it chooses the correct one automatically without prompting you.

Condor Interface

There is no need to change any network values; the defaults should work in 99% of all installations.

Launch the simPlugins Condor program.



Click on the [Network Configuration] Button.

Multicast Group Address is the **broadcast IP address** of the network of your flight simulator system. (Default: 224.11.5.62)

Listen Port (from Condor) specifies the port number the simPluginsCondor Interface 'listens' on. This setting has to match what has been configured in the Condor configuration file UDP.ini

Panel Builder Port is the Listening Port for all Instruments.

AutoConnect means that whenever simPluginsCondor is started, it will connect automatically.

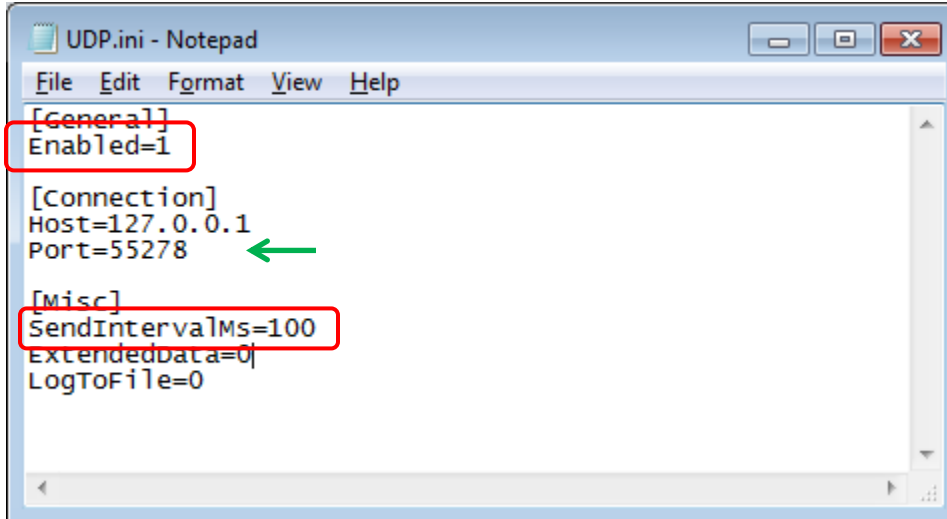
Click on [Save] to save the settings.

Condor Export Settings

Condor has to be configured to export flight values. This is done in the file UDP.ini. The file is typically located in

C:\Program Files (x86)\Condor

Open the file with any text editor and make the following changes:



Set **Enabled=1**

Set **SendIntervalMS=100**

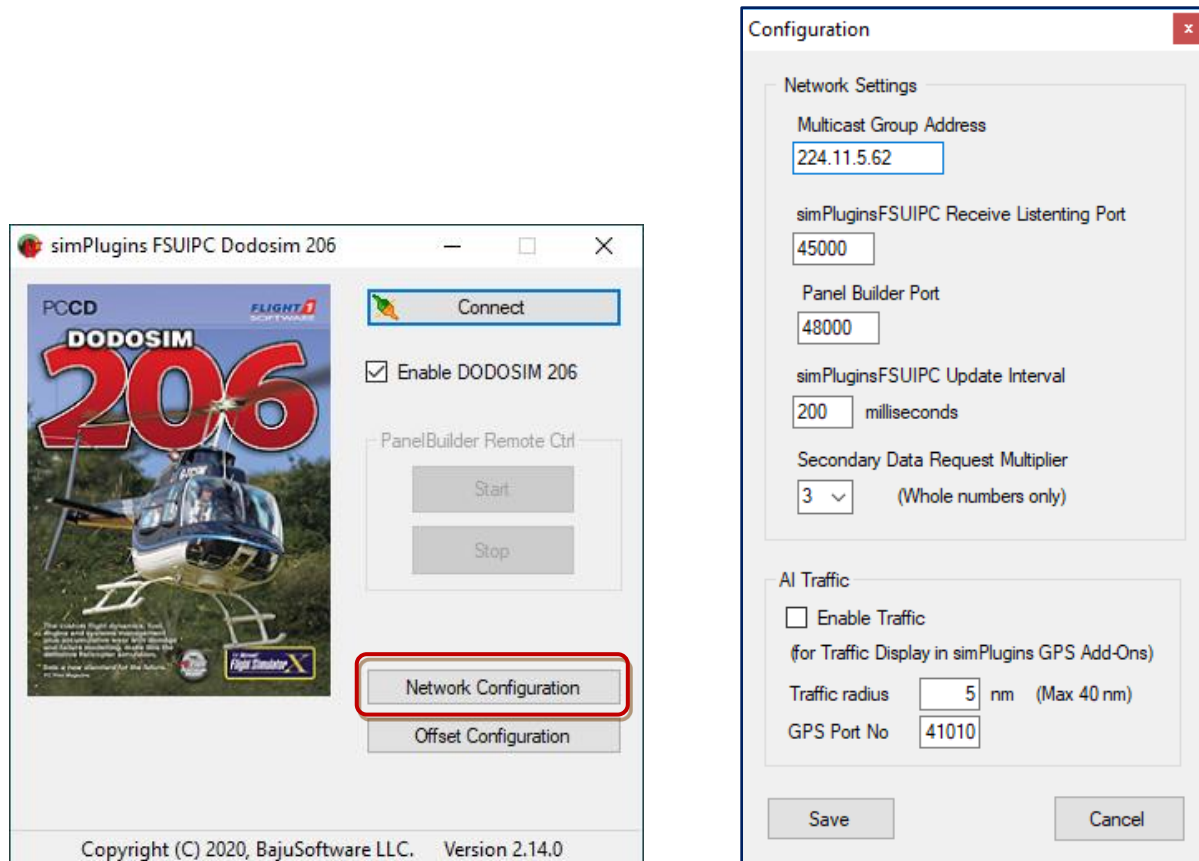
Make a note at the Port number. This port number has to match what has been configured in the simPluginsCondor program under Listen Port (from Condor).

Now save the file.

Dodosim 206 Interface FSUIPC

There is no need to change any network values; the defaults should work in 99% of all installations.

Launch the simPluginsFSUIPC program. Make sure *Enable DODOSIM 206* is checked!



Click on the [Network Configuration] Button.

Multicast Group Address is the broadcast IP address of the network of your flight simulator system. (Default: 224.11.5.62)

simPluginsFSUIPC Receive Listening Port specifies the port number the simPluginsFSUIPC Interface 'listens' on. This setting has to match what has been configured under *Setting the Flight Simulator IP Address* in chapter *Panel Builder Configuration*.

Panel Builder Port is the Panel Builder Listening Port and I used for global communications to all instruments.

simPluginsFSUIPC Update Interval specifies how often the data is updated to the instruments in milliseconds. Here it is 250 milliseconds.

Secondary Data Request Multiplier is used for updating secondary instruments less frequently (like the fuel gauge). 3 indicates 3 x 250ms = 750ms update rate.

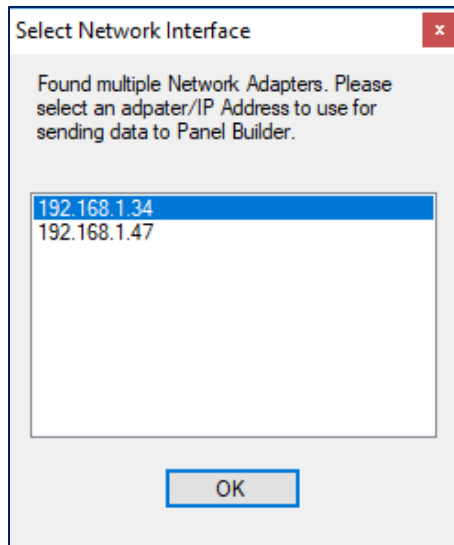
AI Traffic specifies whether to enable AI Traffic output through the interface. You only need to enable this if you use any Panel Builder Add-Ons that provide traffic information.

Click on [Save] to save the settings.

Start MS-Flight Simulator then click on the [Connect] button in simPluginsFSUIPC. The Interface is now ready. Note: Microsoft Flight Simulator has to be running!

Multiple Network Adapter Support

As of version 2.10.1, the interface supports multiple network adapters that might be present in your computer. If you have multiple network adapters, you need to specify which one to use for Panel Builder. When you click [Connect] for the first time, the interface will check and if there is more than one network adapter present, it will prompt you to select an adapter:



Select the correct adapter and click on [OK]. This saves the selection for the next time.

Note: if you have only one network adapter it chooses the correct one automatically without prompting you.

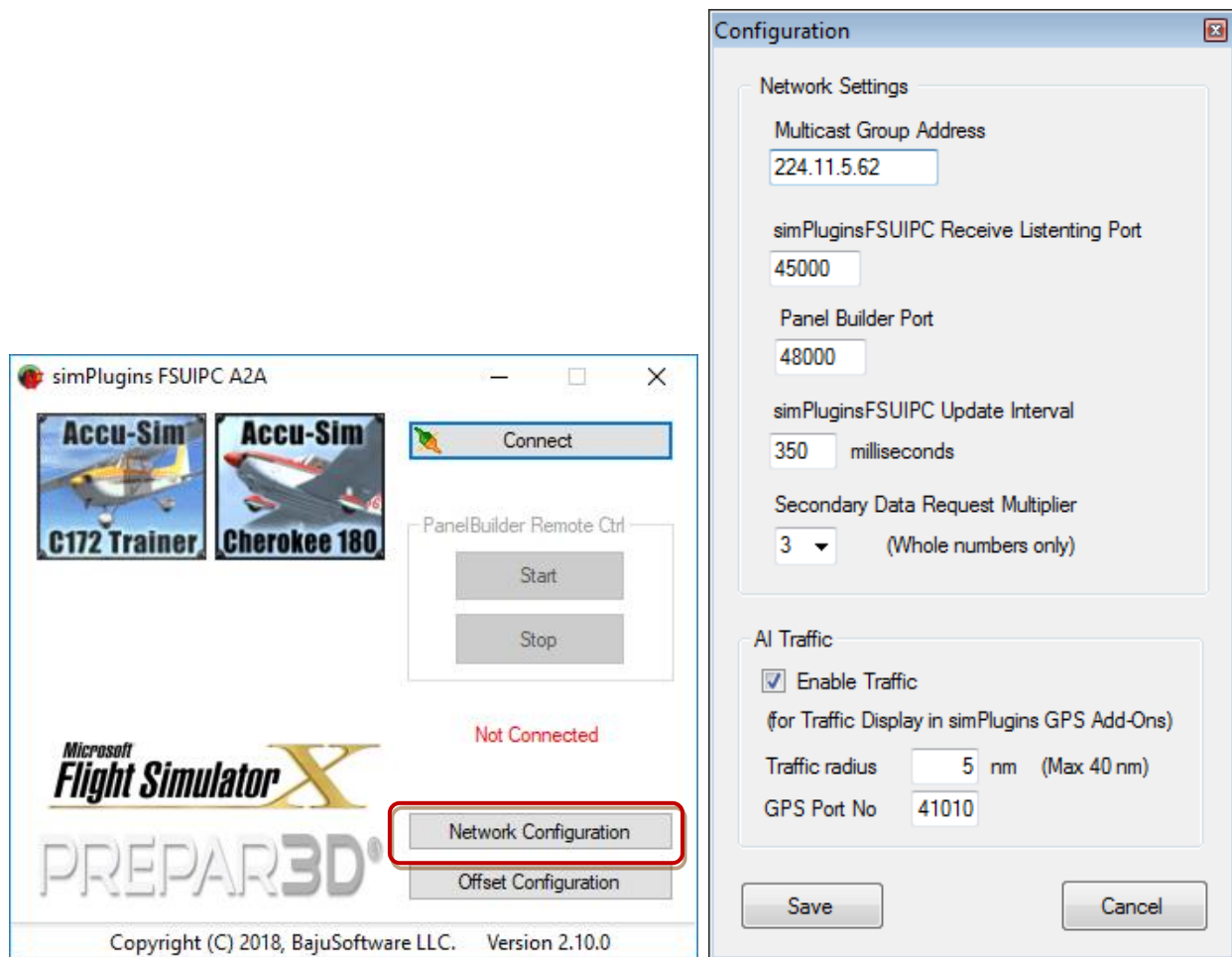
A2A FSUIPC/LUA Interface

There is no need to change any network values; the defaults should work in 99% of all installations.

This interface is supplied with any of our Instrument Add-Ons for the A2A range of aircraft. You must use this interface for any A2A aircraft. The default FSUIPC Interface will not work with A2A aircraft.

This interface also requires a licensed copy of FSUIPC!

Launch the simPlugins FSUIPC A2A program.



Click on the [Network Configuration] Button.

Multicast Group Address is the **broadcast IP address** of the network of your flight simulator system. (Default: 224.11.5.62)

simPluginsFSUIPC Receive Listening Port specifies the port number the simPlugins FSUIPC Interface 'listens' on. This is used for receiving settings from the instruments for example setting the barometer in the Altimeter. This setting has to match what has been configured under ***Setting the Flight Simulator IP Address*** in chapter ***Panel Builder Configuration***.

Panel Builder Port is the listening port as configured in Panel Builder.

The *simPluginsFSUIPC Update Interval* specifies how often the data is updated to the instruments in milliseconds. Here it is 250 milliseconds.

Secondary Data Request Multiplier specifies the update interval for less frequent instrument updates. It multiplies the Update Interval by the entered value.

AI Traffic specifies whether to enable AI Traffic output through the interface. You only need to enable this if you use any Panel Builder Add-Ons that provide traffic information.

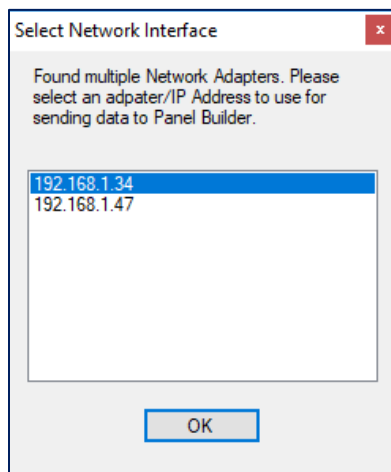
Click on [Save] to save the settings.

Start MS-Flight Simulator then click on the [Connect] button in simPluginsFSUIPCA2A. The Interface is now ready. Note: Microsoft Flight Simulator has to be running!

There is a command line option called 'start' that allows automatic connect on program startup.

Multiple Network Adapter Support

As of version 2.10.1, the interface supports multiple network adapters that might be present in your computer. If you have multiple network adapters, you need to specify which one to use for Panel Builder. When you click [Connect] for the first time, the interface will check and if there is more than one network adapter present, it will prompt you to select an adapter:



Select the correct adapter and click on [OK]. This saves the selection for the next time.

Note: if you have only one network adapter it chooses the correct one automatically without prompting you.

A2A Panel Builder LUA module

There is also LUA module that is installed in the FSUIPC folder in MS Flight Simulator or Prepar3D. This step is performed during the installation of the A2A Panel Builder Instrument Add-On. Make sure that the LUA script has been installed correctly. The file is called ipcready.lua and should be located in:

MS Flight Simulator (Steam):

C:\Program Files (x86)\Steam\steamapps\common\FSX\Modules

Prepar3D V3:

C:\Program Files (x86)\Lockheed Martin\Prepar3D v3\Modules

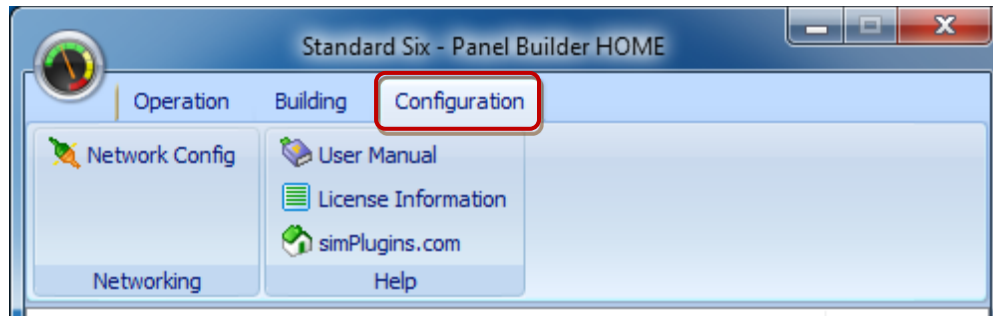
Prepar3D V4:

C:\Program Files\Lockheed Martin\Prepar3D v4\Modules

Step 4 - Panel Builder Configuration

There is no need to change any network values; the defaults should work in 99% of all installations.

Start Panel Builder and select the *Configuration* tab.



Changing the Network Configuration

Multicast Group Address

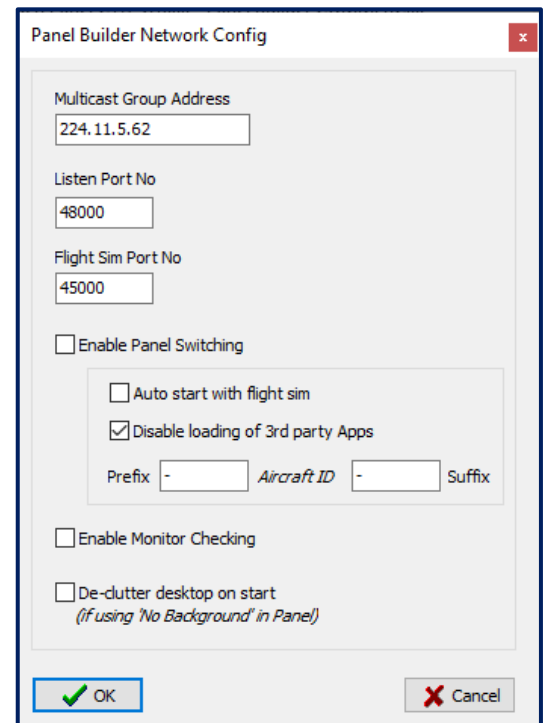
The Multicast Group Address (default 224.11.5.62) can be left as is. It has to match all other Multicast Group Addresses configured.

Listen Port No

This is the port number Panel Builder will use when receiving data. The default is 48000.

Flight Sim Port No

This number has to match the Port Number as configured in the flight simulator interface application. The default is *45000*. See also chapter *Interface Configuration*



Enable Panel Switching

Enables the automatic switching/starting of panels. See the *Adding a new panel* section.

Enable Monitor Checking

Checks if the monitor configuration has changed since the panel was built and gives a warning.

De-clutter desktop on start

If you are creating a panel without any background (i.e. the Windows Desktop is the background), this setting will de-clutter the desktop: All shortcuts on the desktop are hidden and any other program that might be running will be minimized. The desktop will be restored when the panel is stopped.

Help

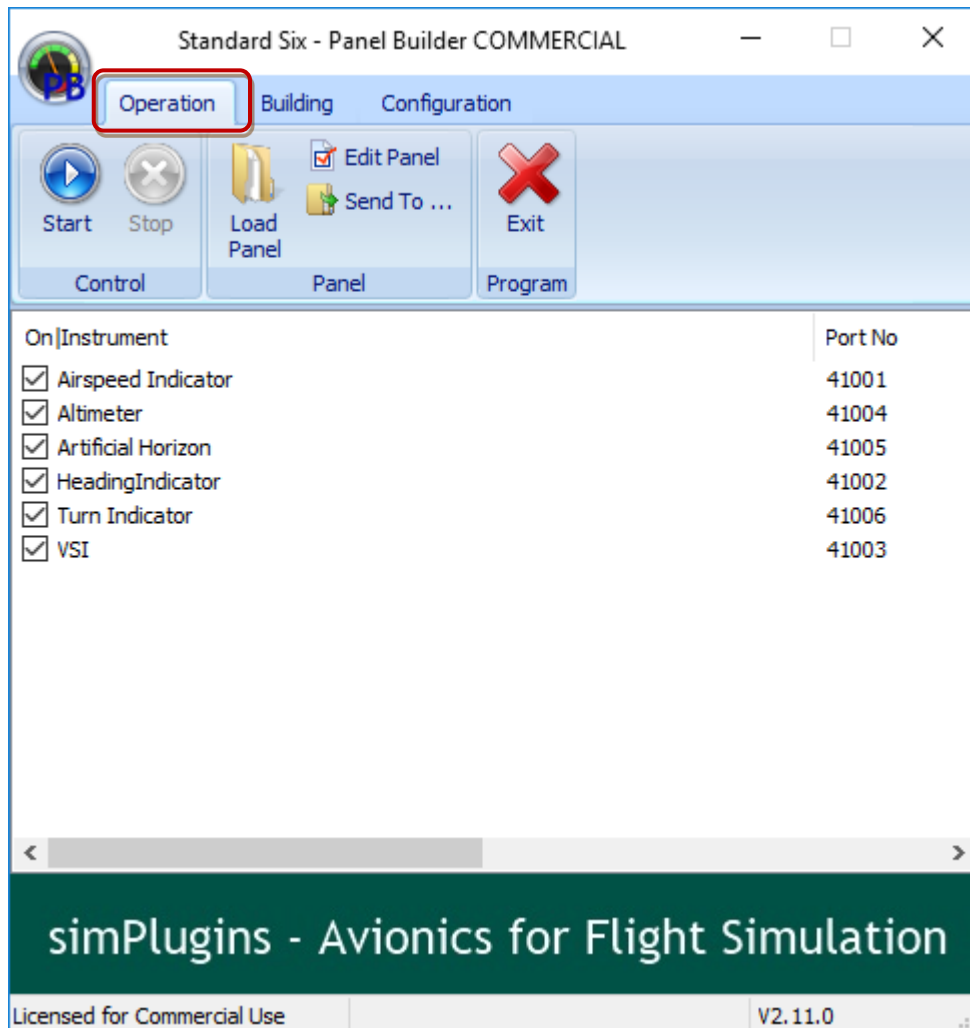
The help section has shortcuts to the User Manual, License Information and the simPlugins website for your reference.

Operation

After installation, you should have an icon for 'Panel Builder' on your desktop where you installed the instruments on. Double click it. This will launch the Panel Builder Program that allows you to

- Start and Stop all Instruments for a panel
- Build new panels
- Set the IP Address and Port Number to connect to the flight simulator interface

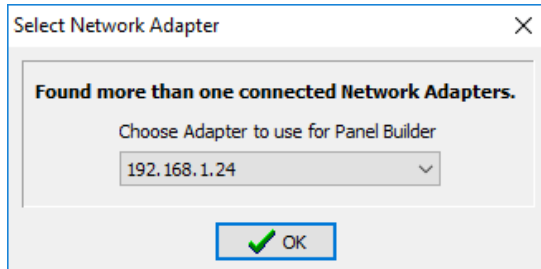
Select the *Operation* tab.



By default, the last panel used will be loaded automatically. This display shows what instruments are part of the panel and their associated Port Numbers. Those port numbers match the Instrument Interface Configuration for the specific instrument.

Multiple Network Adapter Support

As of version 2.12.0, Panel Builder supports multiple network adapters that might be present in your computer. If you have multiple network adapters, you need to specify which one to use for Panel Builder. When you Launch a Panel for the first time, the Panel Builder will check and if there is more than one network adapter present, it will prompt you to select an adapter:



Select the correct adapter and click on [OK]. This saves the selection for the next time.

Note: if you have only one network adapter it chooses the correct one automatically without prompting you.

Launching a Panel

Select a panel by clicking the **Load Panel** icon and selecting a panel from the list.

Click on the **Start** button. All shown instruments that have a checkmark next to them will be started and shown on computer screen and the Panel Builder program will be minimized.

Each Instrument's position is saved with the panel configuration. You can re-locate an Instrument by simply dragging it to a new position on the screen. There is a facility to 'lock' the instruments to the position to avoid accidentally moving it. **Right Click** on the instrument and a menu will be shown. Click on 'Lock' to toggle the lock/not locked option.

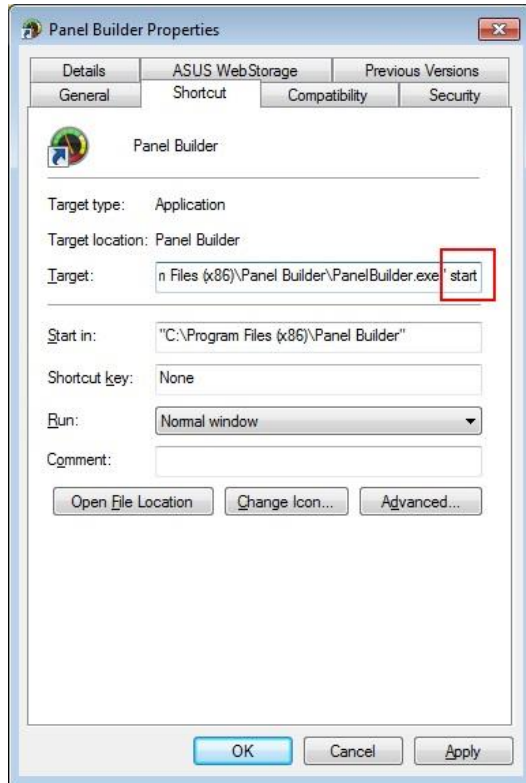
Now you can start your flight simulator and your instruments should come alive!

Note: Once started, you cannot make any changes to the panel configuration. You need to stop it first.

Note: When using Microsoft Flight Simulator or PREPAR3D you also need to click on the [Connect] button in the simPluginsFSX , simPluginsFSUIPC or simPluginsPrepar3d program on your flight simulator computer to establish a connection after you started the flight simulator program.

Auto-Start a Panel

You can automatically start the last panel used by modifying the desktop shortcut for Panel Builder. Right click on the shortcut and select Properties, then select *Shortcut*.



Add the word *start* at the end of the Target. You also need a space before the word *start*.

Click on [OK] to save the changes.

Now every time you double click on Panel Builder, it will load the last panel used.

If you want to start the panel when your computer starts, copy the shortcut into the *Windows Autostart* folder:

Windows 10:

```
C:\Users\[YOUR USER NAME]
\AppData\Roaming\Microsoft\Windows\Start
Menu\Programs\Startup
```

See also chapter about *Command Line Options*.

Stopping a Panel

As mentioned previously, when a panel is started the Panel Builder program is minimized to the task bar. Click on the minimized icon and it will show again.

Display on Desktop

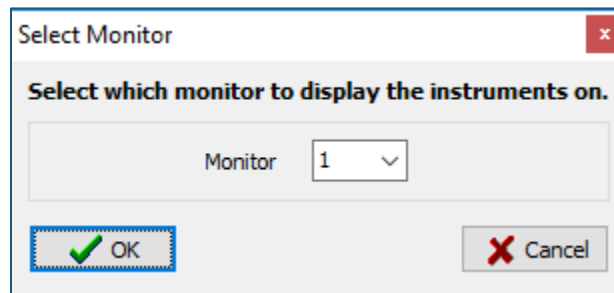
All instruments are separate programs that will show on your desktop. The Panel Builder program will hide the windows desktop, set the background image or the background color as configured for each panel. (See the *Building Panels* section) and suspend the screen saver if used.

Move Instruments to a different Monitor

If you have more than one monitor connected to your computer, you can move the instruments to a different monitor if required. Select *Send To ...* in the Operation Menu.

Note: This option is only enabled if you have more than one monitor.

Select which monitor you want the panel to appear on, then click on [OK]:



This will change the configuration for the panel to a different monitor. You can now launch the panel.

IMPORTANT! If your panel 'spreads' across multiple monitors, do not use this option!

Command Line options

There are two (2) command line options available to add to the Panel Builder shortcut on the desktop.

1. *start* or "*Panel Name*"

The word *start* loads the last panel used and launches the panel.

Instead of *start* you can also specify a panel name to load and start a specific panel.

If the panel name has any spaces, you need to surround the whole name with double quotes, e.g. "Standard Six".

2. *lock*

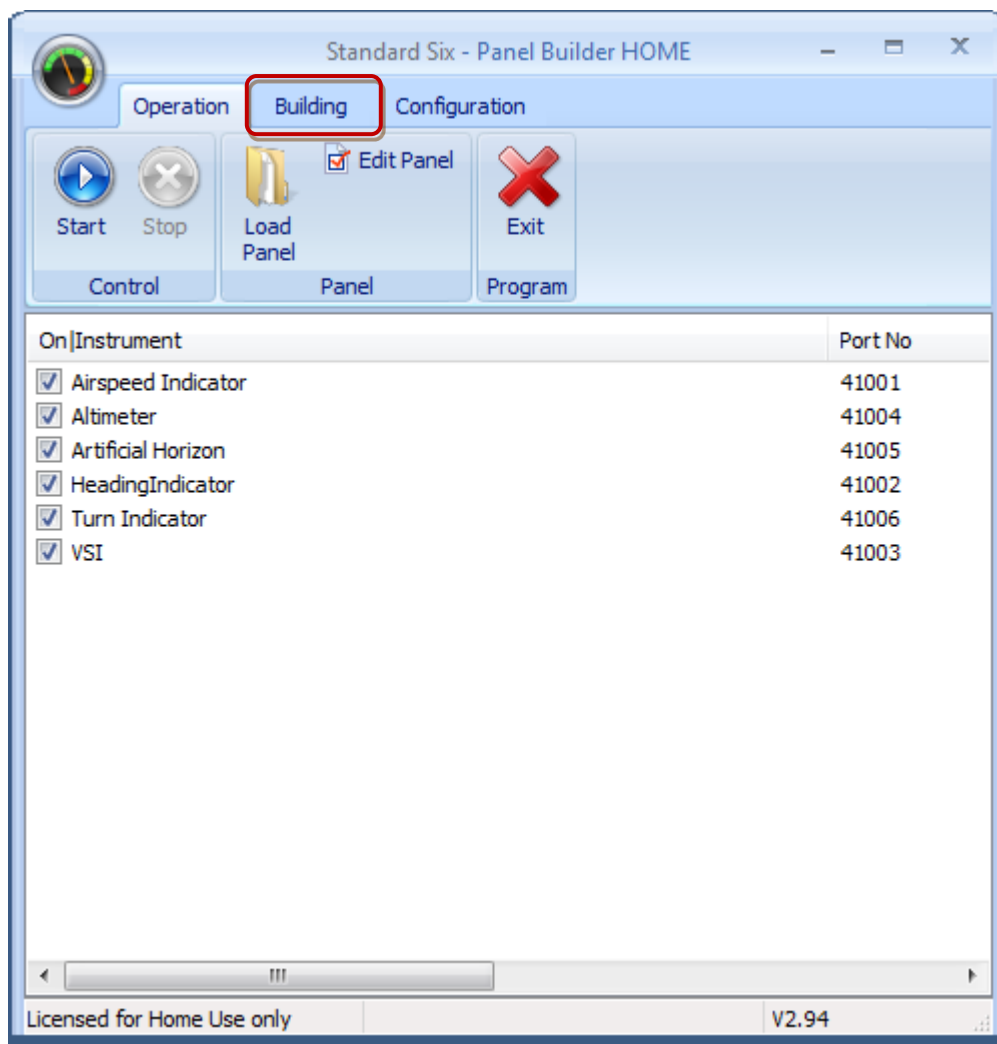
Adding the second command line option *lock* will disable all user interface buttons, except the [Exit] button. This will prevent changes being made to the panel after shutting down a panel. Note: you also need to specify the first command line option (*start* or panel name)!

Building Panels

Multiple panels can be configured for different aircraft types. Each panel configuration contains

- Name of the panel (e.g. the aircraft type)
- A background Image or a Background Color
- Instruments included in panel
- Position and size of each instrument on the screen.

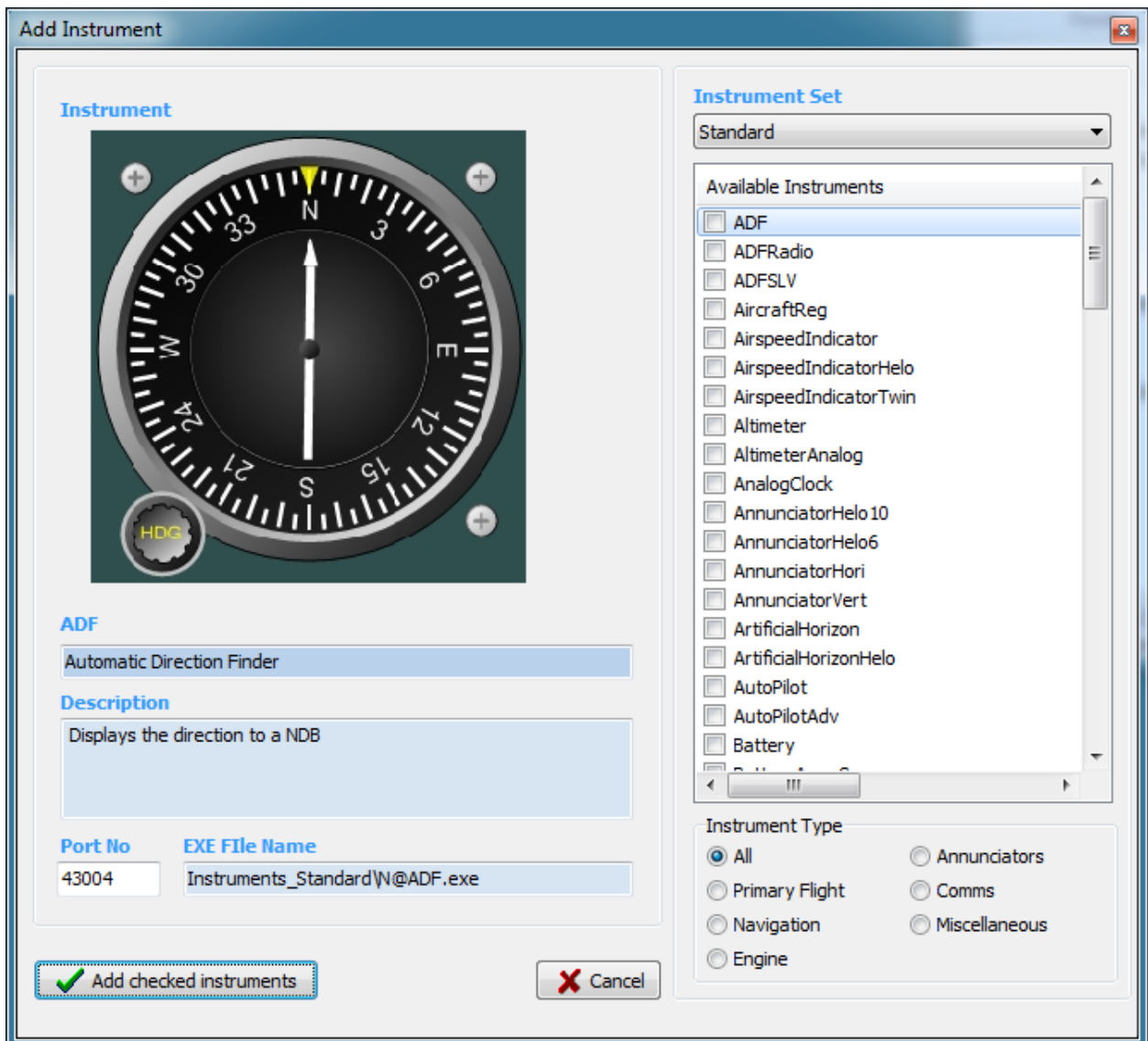
Select the *Building* tab.



Modifying an existing panel

Choose a panel by clicking the **Open Panel** icon under the operation tab and select a panel from the list. The click on the Building tab.

Adding an instrument



Click on **Add Instrument**. The window as shown above will appear.

All available Instruments are shown on the right side. Scroll through the list until you locate the required instruments. You can also filter instruments by instrument type by selecting the appropriate section in the box labeled **Instrument Type**.

The dropdown *Instrument Sets* shows all Instruments for a particular group of instruments, typically instrument add-ons. The dropdown will show all instrument add-ons you have purchased and installed. 'Standard' is the instrument set that came with Panel Builder. You can choose instruments from any instrument set to build a panel.

An image and description will be shown for each instrument.

The Port Number will be filled in automatically choosing the default port of the instrument.

Check each instrument to be added to the panel and click on [Add checked instruments]

To set the location of an Instrument, the panel needs to be 'started'. Click on the *Start* Button. (See chapter **Operation** for more information).

All instruments initial position is in the top left corner. So it will happen that all newly added instruments sit on top of each other. Simply drag each instrument into its final position.

Stop the panel and at that stage the position of each instrument is saved.

To configure each instrument for the aircraft type the panel is intended for, see the chapter **Instrument Reference**.

Removing an instrument from the panel

To delete an instrument, select the instrument in the list and click on the **Remove** button.

Moving and Resizing an Instrument in a panel

Those operations require that a panel is 'running', i.e. the panel has been started and all instruments of the panel are displayed.

By default all instruments are placed at the top left corner of the monitor. To move it to its proper location, left click and drag the instrument around the monitor.

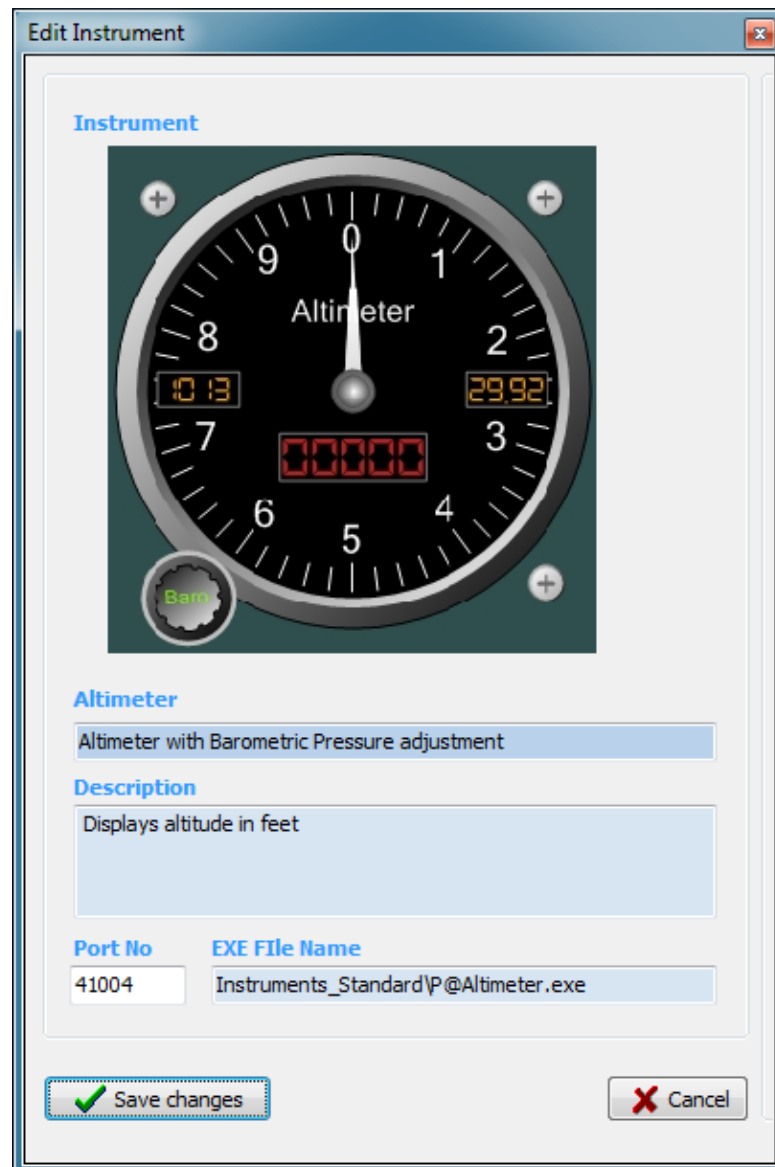
To resize an instrument left click (and release) on the instrument, then either use your mouse wheel or the [+] and [-] buttons on the numeric keypad.

Note: To lock an instrument's size and position, right click on the instrument and select 'Lock' from the menu. To un-lock, repeat the operation.

Note: To reset the position of an instrument to the top left corner of the 1st Monitor select the instrument in the instrument list of Panel Builder and choose the Building/Reset Position in the menu.

Modifying an instrument

Select an instrument in the list and click on the *Edit Settings* button in the Instrument menu section. You can also double-click it.

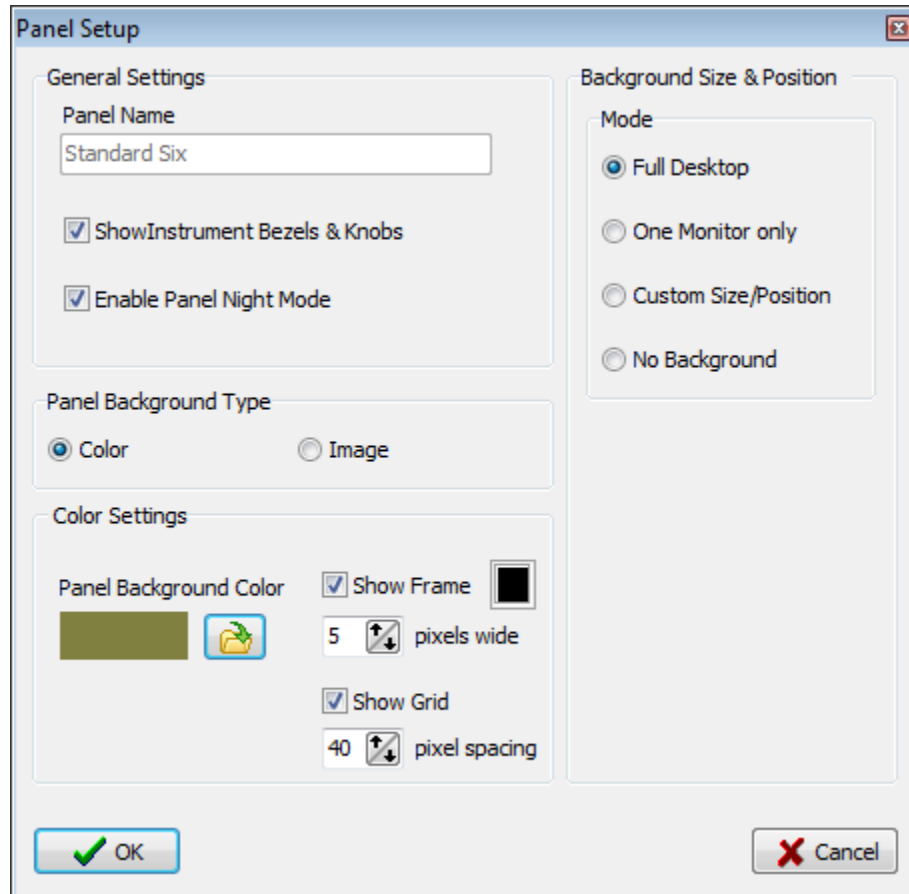


You can only modify the port number of the instrument.

Note: If you modify the port number, you also have to modify the port number in the appropriate Interface Configuration. See chapter **Interface Modification**.

Adding a new panel

To add a new panel, click on the *New Panel* button in the Panels menu section.



Panel Name: Enter the name of the panel e.g. the aircraft type.

Show Instrument Bezels & Knobs. This will either show/or hide the bezels, mounting screws and any knobs for the instruments.

This is useful for cockpit builders who use a mask in front of the monitor. A mask could be made from cardboard or other thin material, or if a monitor is integrated into a full instrument panel.

Enable Panel Night Mode

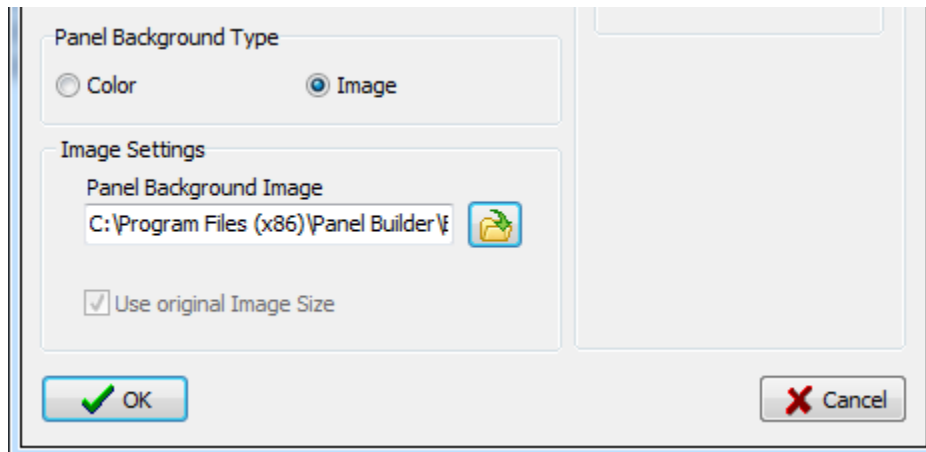
This will automatically switch all instruments in the panel to a 'red glow' color for night flying. The switching occurs when the time in the flight simulator switches to night time.

Panel Background Type:

Select between colored background and an image.

Color Background: Specify the color and an optional colored frame.

Image Background: Specify the image file and if you want to retain the original image size of a custom size.



Background Size and Position

Four options are available:

Full Desktop

This fills the desktop area with the selected color or image. If you have multiple monitors connected it will span all monitors.

One Monitor only

As above, but the background will be restricted to the monitor specified. This only applies only to multi-monitor setups.

Custom Size and Position

Here you can specify what size and what position the background should be. This is useful if you don't want a background that fills a whole monitor.

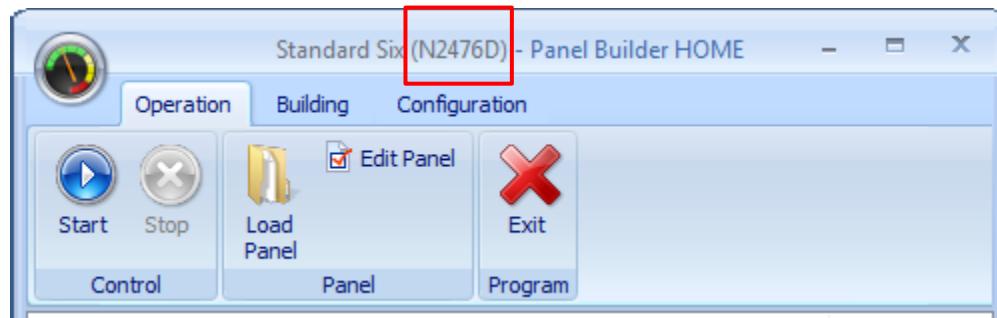
No Background

Just as the name implies. The instruments will be placed on the desktop as is.

Adding a new panel (automatic panel switching)

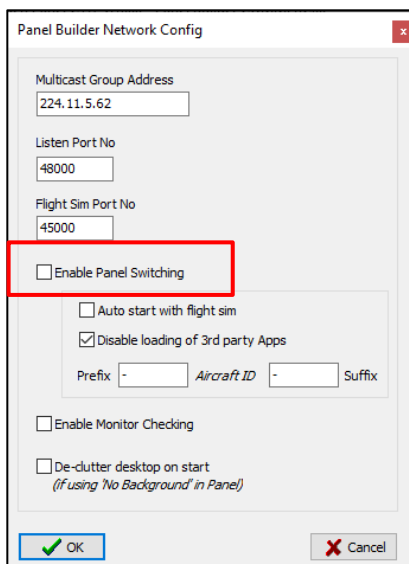
You can create panels that automatically switch to the appropriate aircraft when loaded by the flight simulator. You can create a specific panel for each aircraft you have in your flight simulator. Whenever you switch the aircraft in your simulator, Panel Builder will load automatically the matching panel.

All you have to do is include the ATC call sign of the aircraft somewhere in the panel name. The ATC call sign is also displayed in the top bar of Panel Builder to make this easier. Your Flight Simulator has to be started and the aircraft you want to use has to be loaded to show the ATC call sign:



In this case the call sign is ***N2476D***. Now create a new panel and give it the Panel Name ***Cessna 172 N2476D***. You can also copy an existing panel and rename it accordingly. Proceed to add instruments to the panel as usual.

The final thing to do is to enable automatic panel switching. Go to the menu *Configuration/Network Configuration*.



Click on '*Enable Panel Switching*'. That's it.

Additionally, you can also check the '*Auto start with flight sim*' box. This will start a panel even if there is no panel running at the time, i.e. when Panel Builder has been started but no panel is active.

Disable loading of 3rd party Apps, means that any 3rd party apps are not loaded when a panel is switched. This is important for any 3rd party apps that change X-Plane configuration files.

Prefix and *Suffix* specifies what characters to use for prefixing and suffixing the Aircraft ID. The default is no prefix and suffix. It might be necessary to add a prefix and/or suffix to distinguish between different aircraft, especially if you use the X-Plane option to use filenames instead of aircraft call signs. If you modify them, you need to adjust your panel names accordingly.

Now continue adding panels for your other aircraft. All you need to do is to load the aircraft into your simulator and the call sign will be displayed.

X-Plane only option:

There is an option for X-Plane users to use the *aircraft filename* instead of the *ATC call sign*. This feature was necessary to distinguish between different versions of the same aircraft, e.g. the C172 with Analog or the G1000 panel. Both have the same ATC call sign and automatic panel switching would not work in this case.

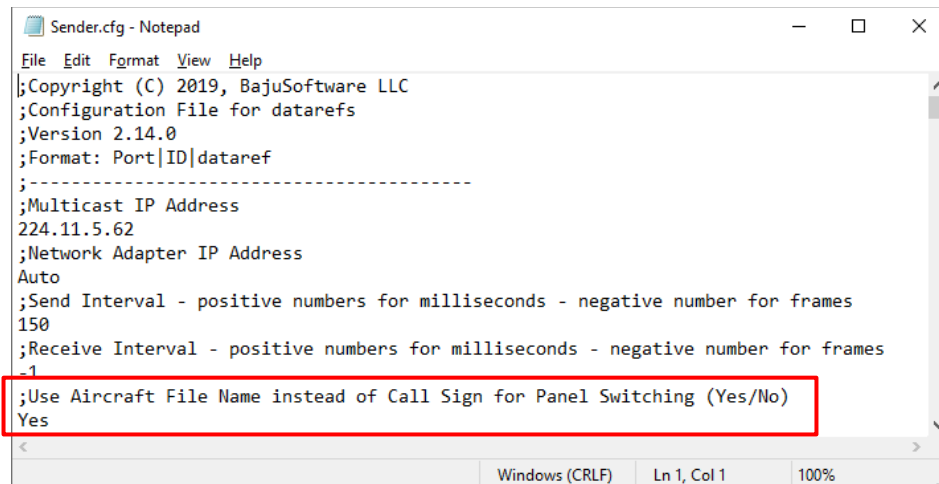
To enable this feature you need to modify the Panel Builder config file of the X-Plane plugin. The plugin config file is located here:

```
...\X-Plane 11\resources\plugins\Panel Builder\Sender.cfg
```

or

```
...\X-Plane 10\resources\plugins\Panel Builder\Sender.cfg
```

Double click the file to edit it (or use your favorite text editor):



Change the *No* to a *Yes* under the section to use the file name instead of the call sign. Save the file. You need to restart X-Plane if it was running.

Now the aircraft filename is displayed in Panel Builder rather than the call sign. Use this information to name your panel as explained previously.

We strongly recommend to use a prefix and suffix ('|' or '#' or '-') to uniquely identify each aircraft!



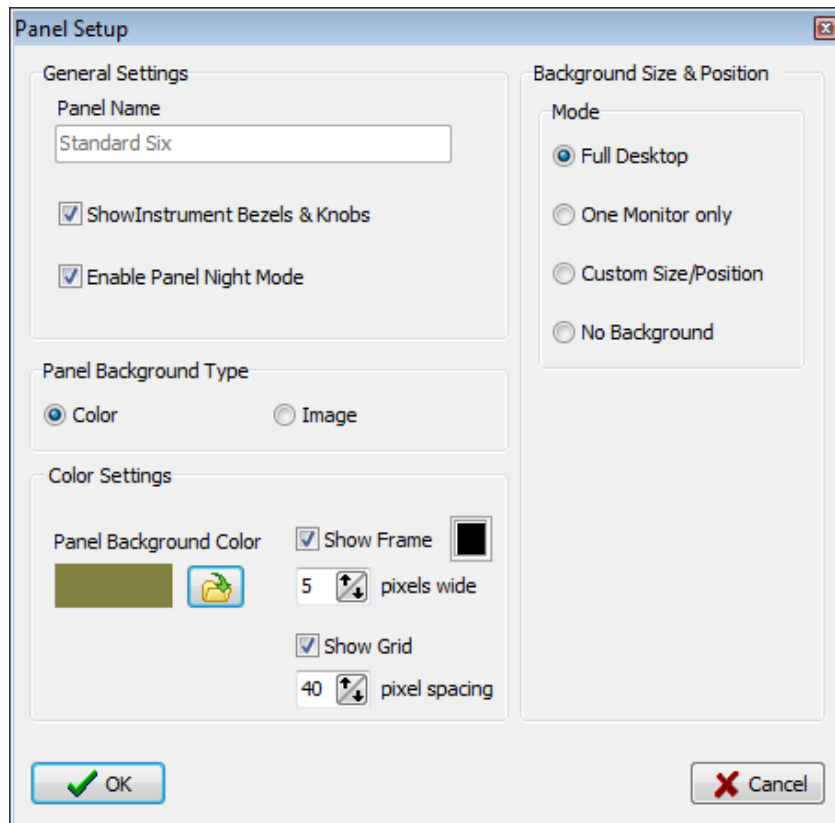
Cessna C172 with Analog Instruments

Cessna C172 with Garmin G1000

Modifying a panel

The panel configuration (not the instruments within a panel) can be modified using the **Edit Panel** button in the Panels menu section. To modify an instrument, see chapter *Modifying an instrument*.

Follow the steps as described in the *Adding a new panel section*. **Note that the Panel Name cannot be modified!**



Deleting a panel

To delete a panel click on the **Delete Panel** button in the Panels menu section. Please note that the configuration for all Instruments in that panel will also be deleted.

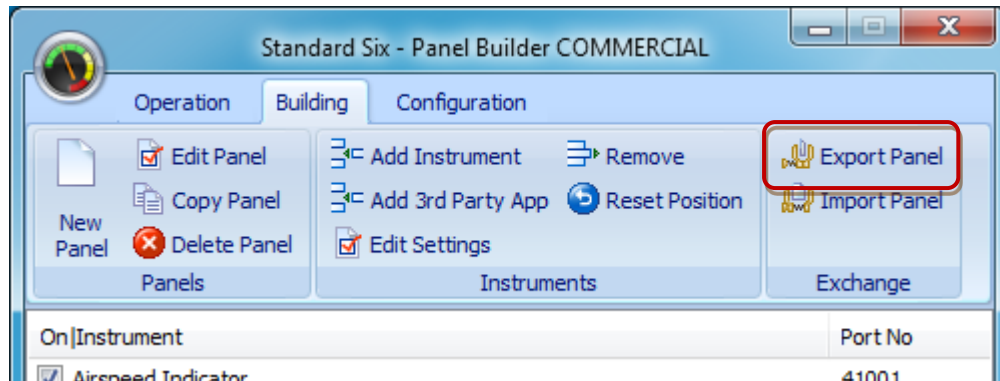
Copying a panel

To copy panels, click on the **Copy Panel** button in the Panels menu section. You will be prompted for a new Panel Name. After entering a new name, the current panel will be copied and the copied panel with the new name will be opened.

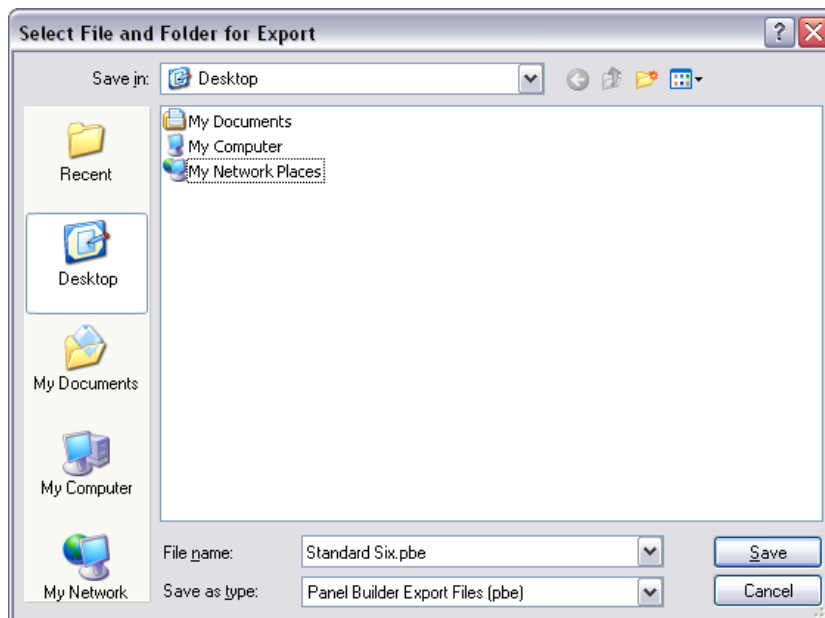
Exporting a panel

This function allows you to export a complete panel configuration and import it on another computer with Panel Builder installed. All instrument locations, sizes and configurations and the panel background will be exported. *This function requires the Commercial Version.*

Choose the **Building** tab, then **Export Panel**.



A dialog will show to select where the export file should be saved to. This can be a local drive, a networked computer drive or a thumb drive.



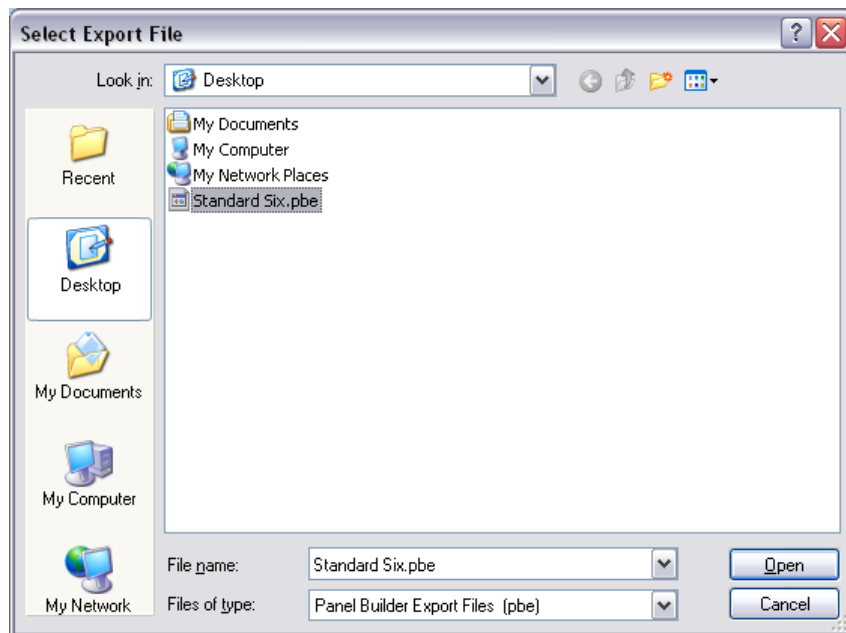
Click on [Save] to finalize the export function.

Importing a panel

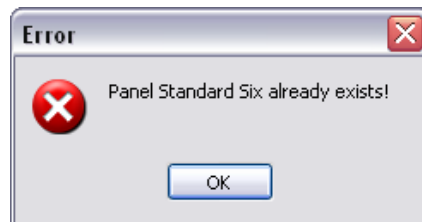
This allows you to import a previously exported panel configuration. Please note that when importing a panel that the screen size of the exported panel is the same size or less than the screen size of the target computer. *This function requires the Commercial Version.*

Chose the **Building** tab, then **Import Panel**

A dialog will show to select where the export file should be imported from. Browse to the location where the export file was saved to and click on [Open].



If the same panel exists already, a warning will be displayed. Otherwise the panel will be imported.



Note: You can rename the Export File before importing it. The file name will become the panel name after importing.

Tips and Tricks

How can I change the Banner Image on the bottom of the Panel Builder screen?

There is a file called BannerImage.jpg in the Panel Builder program Files folder. Replace this file with your own version. For correct display, create an image file with the following dimensions: 484 pixels wide by 60 pixels high. ***This requires the Panel Builder Commercial Version.***

'Exception received' shows up in simpluginsFSX and the instruments don't update

This means that the FSX Interface could not be started. Make sure you have the correct version of MS Flight Simulator (Acceleration Pack or Service Pack 2) installed. Another problem can be that the .ini file is corrupt for the FSX Interface. Try to re-install the FSX Interface from the Panel builder Installer.

All instruments are cut-off at the bottom right (instruments are only partially visible)

Make sure that the text size is set to 100% in Windows Control Panel/ Display.

Instrument XXX doesn't update

This is very likely an issue with the port number configuration. Make sure that both port numbers are the same in Panel Builder and the Instrument Interface.

Where can I set the instrument ranges and color arcs?

Many instruments have a menu that can be accessed by right-clicking on an instrument and selecting the **Settings** options. Not all instruments have a settings option.

I accidentally move Instruments when using the knobs.

Each instrument can be locked into its position by right-clicking on the instrument and selecting **Lock**.

**We have a comprehensive FAQ on our website for further Tips and Tricks.
Go to <http://www.simplugins.com/html/faq.html>**

Changing the instrument size

You have to start the panel first. Then left-click on each instrument and use the scroll wheel on the mouse or the [+]/[-] keys on the numeric keypad.

Configuring instruments

Many instruments have a configuration option to adjust them to various parameters. This allows each instrument to be customized to a specific aircraft type.

Many engine instruments require that a specific instrument is added multiple times to a panel in order to display data for multi-engine aircraft. Again, each of those instruments needs to be configured to specify what engine the instrument is used for.

Start the panel, the right-click with your mouse on the instrument and select 'Setting' from the pop-up menu. Adjust any setting required and click on the save button.

Each adjustment you make to an instrument is specific to this instrument and the panel it is contained in.

Using instrument buttons and dials

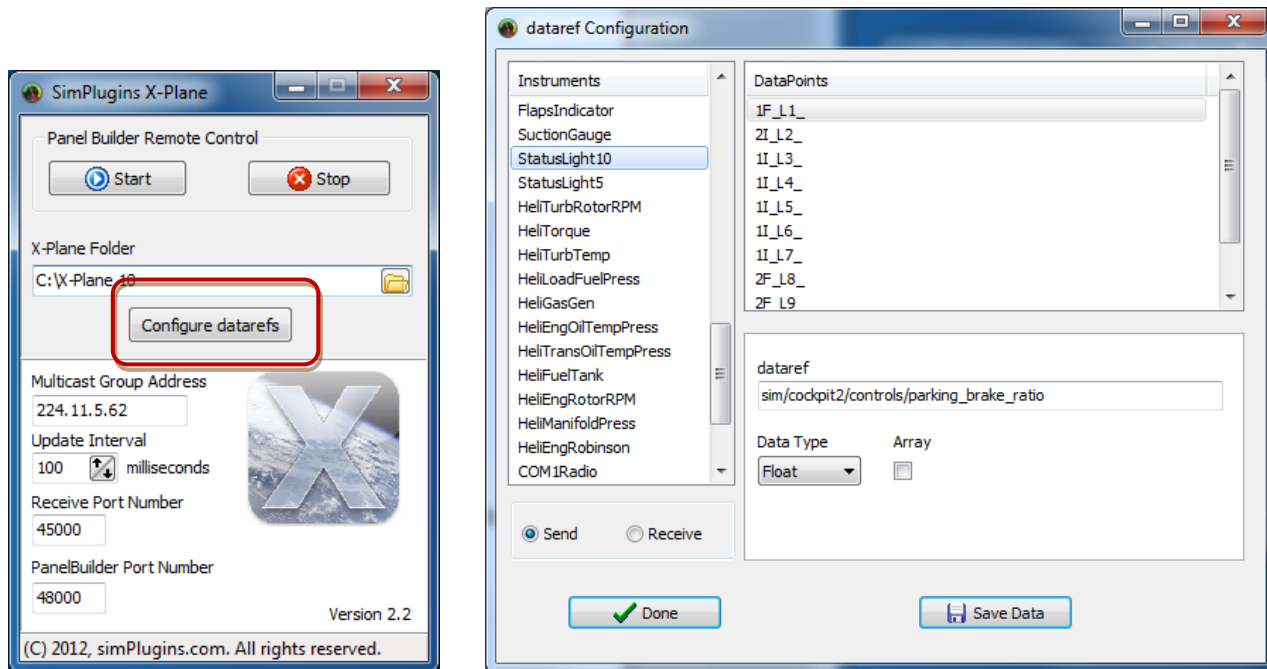
Many instruments contain buttons and dials (knobs). All those elements are fully functional and can be used with a mouse, as in previous versions. As of Version 2.6 of Panel Builder those elements have been improved for use with a touch enabled monitor. A multi-touch monitor is not required, a simple single touch monitor is sufficient.

Element	Mouse	Touch-Screen
Button	Left-Click on button	Touch button on screen
Single Knob (Dial)	Left-Click on knob and hold Move mouse clock or anti clock wise in a circular motion.	Touch knob and move finger in a circular motion clock or anti clock wise.
Dual Knob (Radios)	<p><i>Outside dial</i> Left-Click just outside of knob and hold. Move mouse clockwise or anti clockwise in a circular motion.</p> <p><i>Inside dial</i> Left-Click on inside of knob and hold. Move mouse clockwise or anti clockwise in a circular motion.</p>	<p><i>Outside dial</i> Touch just outside of knob and move finger in a circular motion clockwise or anti clockwise.</p> <p><i>Inside dial</i> Touch just inside of knob and move finger in a circular motion clockwise or anti clockwise.</p>

Interface Modification

X-Plane 9 (and X-Plane 10.10)

You can configure each dataref that drives the instruments using the SimPlugins X-Plane program. Make sure an X-Plane folder is selected and then click on [Configure datarefs]



This facility gives you the freedom to change datarefs once they become obsolete or are superseded by a new dataref without requiring a program update.

Select the Instrument to change on the left side. In the DataPoints section it will show an ID for each dataref that is configured. Many instruments have more than one.

In the lower section, enter the dataref information.

Data Type can be *Integer*, *Float* or *String*.

Array indicates typically an engine dataref where data for multiple engines is provided. You can specify how many you want by entering *No of Members*, for example 2 for a twin engine aircraft.

Don't forget to click [Save Data] after each change made.

A complete reference of datarefs can be found under the X-plane plugins folder in a file called `datarefs.txt`.

X-Plane 10 (10.20 or greater)

You can configure each dataref that drives the instruments using the SimPlugins X-Plane program.

This facility gives you the freedom to change datarefs once they become obsolete or are superseded by a new dataref without requiring a program update.

The plugins for x-plane where installed under

```
...\X-Plane 10\resources\plugins
```

There are several configuration files for the plugin.

In folder ...\X-Plane 10\resources\plugins\PanelBuilder

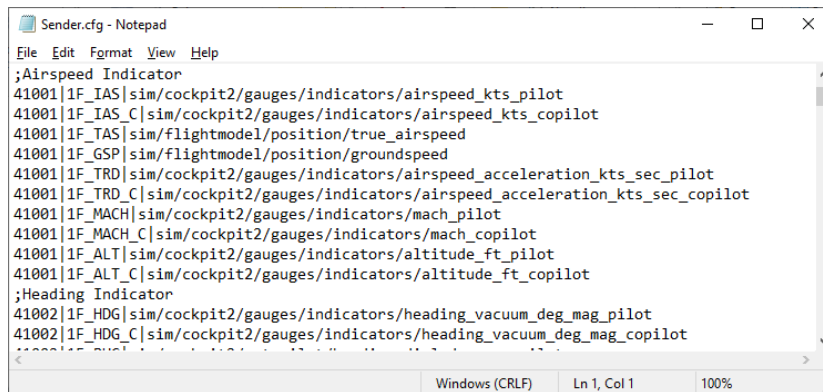
<i>Sender.cfg</i>	<i>X-Plane send dataref values</i>
<i>ReceiverCMD.cfg</i>	<i>X-Plane receive commands (momentary)</i>
<i>ReceiverCMDTOG.cfg</i>	<i>X-Plane receive commands (toggle)</i>
<i>ReceiverDAT.cfg</i>	<i>X-Plane receive datarefs</i>

In folder ...\X-Plane 10\resources\plugins\PanelBuilderFast

<i>ReceiverDAT.cfg</i>	<i>X-Plane receive values for datarefs (fast execution like dials)</i>
------------------------	--

Use notepad or any other text edition to modify the datarefs in the above listed configuration files.

Make a backup copy first! Also note that those files will be overwritten by a software upgrade. Always keep a copy of the original and your modified files.



```
Sender.cfg - Notepad
File Edit Format View Help
;Airspeed Indicator
41001|1F_IAS|sim/cockpit2/gauges/indicators/airspeed_kts_pilot
41001|1F_IAS_C|sim/cockpit2/gauges/indicators/airspeed_kts_copilot
41001|1F_IAS|sim/flightmodel/position/true_airspeed
41001|1F_GSP|sim/flightmodel/position/groundspeed
41001|1F_TRD|sim/cockpit2/gauges/indicators/airspeed_acceleration_kts_sec_pilot
41001|1F_TRD_C|sim/cockpit2/gauges/indicators/airspeed_acceleration_kts_sec_copilot
41001|1F_MACH|sim/cockpit2/gauges/indicators/mach_pilot
41001|1F_MACH_C|sim/cockpit2/gauges/indicators/mach_copilot
41001|1F_ALT|sim/cockpit2/gauges/indicators/altitude_ft_pilot
41001|1F_ALT_C|sim/cockpit2/gauges/indicators/altitude_ft_copilot
;Heading Indicator
41002|1F_HDG|sim/cockpit2/gauges/indicators/heading_vacuum_deg_mag_pilot
41002|1F_HDG_C|sim/cockpit2/gauges/indicators/heading_vacuum_deg_mag_copilot
Windows (CRLF) Ln 1, Col 1 100%
```

A complete reference of datarefs and commands can be found under the X-plane plugins folder in a file called `DataRefs.txt` and `Commands.txt`.

X-Plane 11

You can configure each dataref that drives the instruments using the SimPlugins X-Plane program.

This facility gives you the freedom to change datarefs once they become obsolete or are superseded by a new dataref without requiring a program update.

The plugins for x-plane where installed under

```
...\X-Plane 11\resources\plugins
```

There are several configuration files for the plugin.

In folder ...\X-Plane 11\resources\plugins\PanelBuilder

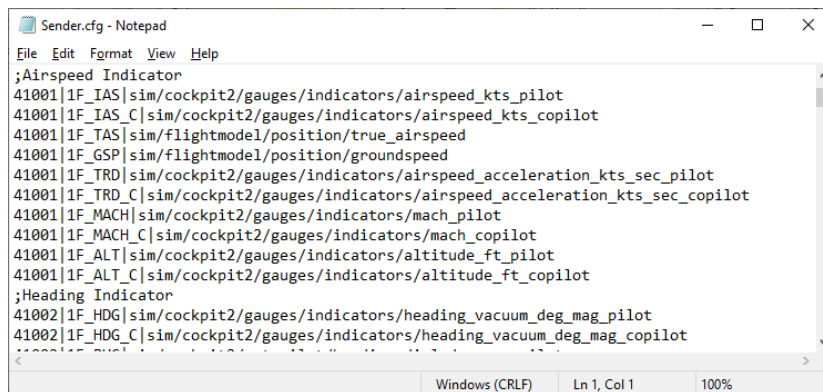
<i>Sender.cfg</i>	<i>X-Plane send dataref values</i>
<i>ReceiverCMD.cfg</i>	<i>X-Plane receive commands (momentary)</i>
<i>ReceiverCMDTOG.cfg</i>	<i>X-Plane receive commands (toggle)</i>
<i>ReceiverDAT.cfg</i>	<i>X-Plane receive datarefs</i>

In folder ...\X-Plane 11\resources\plugins\PanelBuilderFast

<i>ReceiverDAT.cfg</i>	<i>X-Plane receive values for datarefs (fast execution like dials)</i>
------------------------	--

Use notepad or any other text edition to modify the datarefs in the above listed configuration files.

Make a backup copy first! Also note that those files will be overwritten by a software upgrade. Always keep a copy of the original and your modified files.

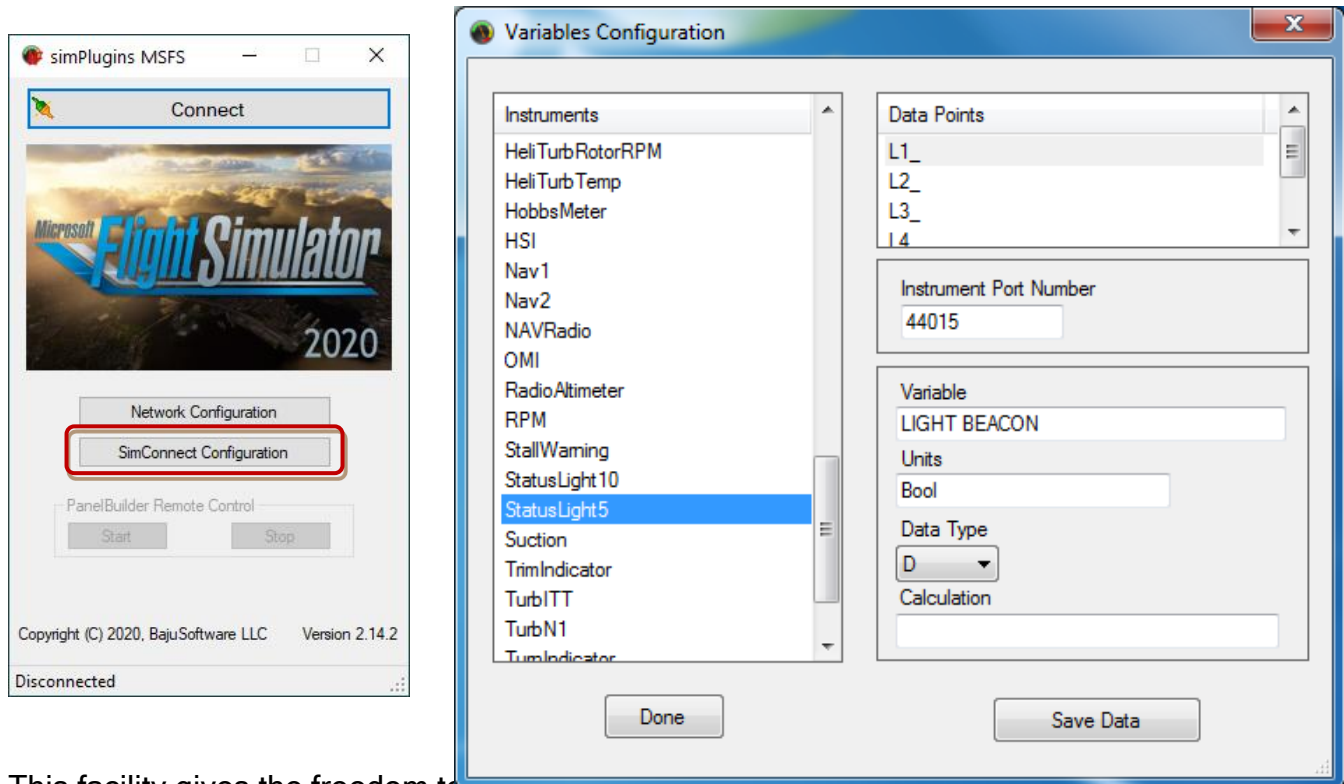


```
Sender.cfg - Notepad
File Edit Format View Help
;Airspeed Indicator
41001|1F_IAS|sim/cockpit2/gauges/indicators/airspeed_kts_pilot
41001|1F_IAS_C|sim/cockpit2/gauges/indicators/airspeed_kts_copilot
41001|1F_IAS|sim/flightmodel/position/true_airspeed
41001|1F_GSP|sim/flightmodel/position/groundspeed
41001|1F_TRD|sim/cockpit2/gauges/indicators/airspeed_acceleration_kts_sec_pilot
41001|1F_TRD_C|sim/cockpit2/gauges/indicators/airspeed_acceleration_kts_sec_copilot
41001|1F_MACH|sim/cockpit2/gauges/indicators/mach_pilot
41001|1F_MACH_C|sim/cockpit2/gauges/indicators/mach_copilot
41001|1F_ALT|sim/cockpit2/gauges/indicators/altitude_ft_pilot
41001|1F_ALT_C|sim/cockpit2/gauges/indicators/altitude_ft_copilot
;Heading Indicator
41002|1F_HDG|sim/cockpit2/gauges/indicators/heading_vacuum_deg_mag_pilot
41002|1F_HDG_C|sim/cockpit2/gauges/indicators/heading_vacuum_deg_mag_copilot
Windows (CRLF) Ln 1, Col 1 100%
```

A complete reference of datarefs and commands can be found under the X-plane plugins folder in a file called `DataRefs.txt` and `Commands.txt`.

MS Flight Simulator X, MS Flight Simulator 2020 and Prepar3D simConnect

You can configure each variable that drives the instruments using the simPluginsFSX, simPluginsMSFS or simPluginsP3D program. Click on [SimConnect Configuration]



This facility gives the freedom to change variables to suit our requirements

Select the Instrument to change on the left side. In the DataPoints section it will show an ID for each variable that is configured. Many instruments have more than one.

In the lower section, enter the variable information.

Variable are any of the published SimConnect simulator variables. For a complete list see

<http://msdn.microsoft.com/en-us/library/cc526981.aspx>

Units specifies the unit of measure (see the reference listed above)

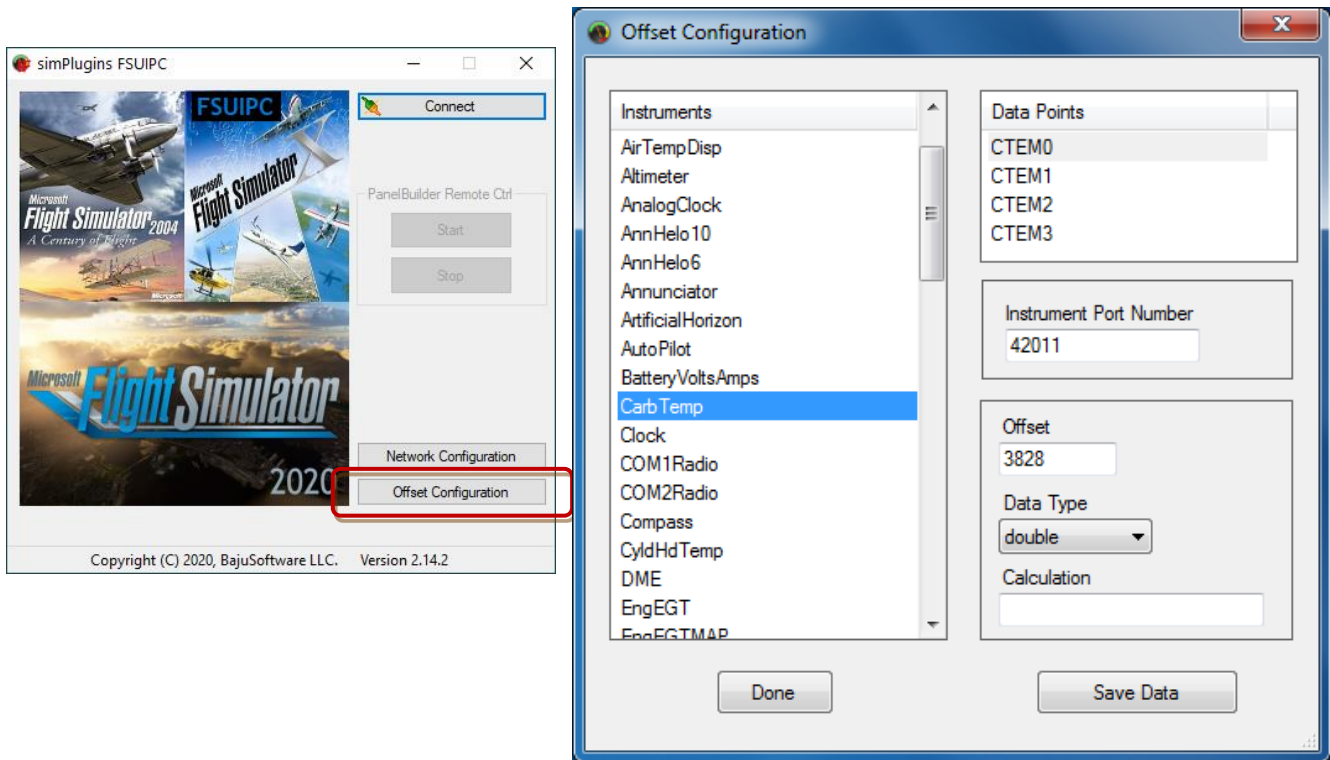
Data Type can be either *D*, *I* or *S* (*Decimal*, *Integer* or *String*)

Calculation is required for some instruments to make them work with Panel Builder.

Calculation Format: {0} specifies the value being sent from SimConnect

MS Flight Simulator, Prepar3D, DodoSim 206 and A2A FSUIPC

You can configure each variable that drives the instruments using the simPlugins FSUIPC or simPlugins FSUIPC P3D program. Click on [Offset Configuration]



This facility gives the freedom to change variables to suit our requirements

Select the Instrument to change on the left side. In the DataPoints section it will show an ID for each variable that is configured. Many instruments have more than one.

In the lower section, enter the variable information.

Offset is any of the published offsets. For a complete list see the FSUIPC documentation.

Data Type is the correct datatype as depending on offset. The table below will help with making the correct selection.

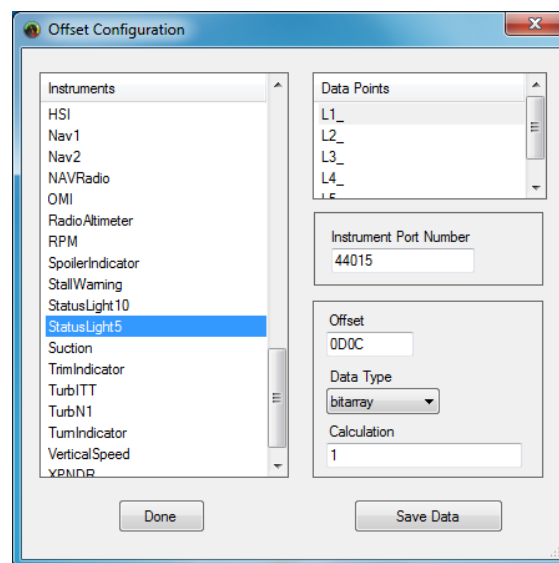
Calculation is required for some instruments to make them work with Panel Builder.

Calculation Format: {0} specifies the value being sent from the Simulator

Datatypes for Offsets

Offset Size	datatype
1	byte
2	short (signed) ushort (un-signed)
4	int (signed) uint (un-signed)
4 (Specified as 32 bit Float)	float
8	long (signed) ulong (unsigned)
8 (Specified as FLOAT64)	double
Any specified string	string

The offset 'bitarray' is used the following way:



In addition to the Offset, you have to specify which bit within the array will provide the wanted value.

In the example above we are using the bitarray for the aircraft lights. This array provides status information which lights are on or off (Landing, Beacon, Strobe etc.). Each status is stored in a bit of the array. In the Calculation Filed you have to specify which bit to use for this data point. In the example above we use bit no '1', which indicates if the Navigation Lights or on or off.

There are is an additional 'offset' used by Panel Builder called 'totalfuel'. This is not a real offset. It l used to provide a value for the total fuel available in gallons. There is no offset available prior to Flight Simulator X to give this value.

The offset can be set to '0000' as this is not really an offset.

simPlugins Panel Builder
User Manual Version 2.15.X

Copyright © 2021, BajuSoftware, LLC. All Rights reserved.

No reproduction without permission