

**Measure #113 (NQF 0034): Colorectal Cancer Screening – National Quality Strategy Domain: Effective Clinical Care**

**2017 OPTIONS FOR INDIVIDUAL MEASURES:**

**CLAIMS ONLY**

**MEASURE TYPE:**

Process

**DESCRIPTION:**

Percentage of patients 50-75 years of age who had appropriate screening for colorectal cancer

**INSTRUCTIONS:**

This measure is to be reported a minimum of **once per performance period** for patients seen during the performance period. There is no diagnosis associated with this measure. Performance for this measure is not limited to the performance period. This measure may be reported by eligible clinicians who perform the quality actions described in the measure based on services provided and the measure-specific denominator coding.

**Measure Reporting:**

The listed denominator criteria is used to identify the intended patient population. The numerator quality-data codes included in this specification are used to submit the quality actions allowed by the measure. All measure-specific coding should be reported on the claim(s) representing the eligible encounter.

**DENOMINATOR:**

Patients 50-75 years of age with a visit during the measurement period

**Denominator Criteria (Eligible Cases):**

Patients 50 to 75 years of age on date of encounter

**AND**

**Patient encounter during the performance period (CPT or HCPCS):** 99201, 99202, 99203, 99204, 99205, 99212, 99213, 99214, 99215, 99341, 99342, 99343, 99344, 99345, 99347, 99348, 99349, 99350, G0402, G0438, G0439

**NUMERATOR:**

Patients with one or more screenings for colorectal cancer. Appropriate screenings are defined by any one of the following criteria:

- Fecal occult blood test (FOBT) during the measurement period
- Flexible sigmoidoscopy during the measurement period or the four years prior to the measurement period
- Colonoscopy during the measurement period or the nine years prior to the measurement period
- Computed tomography (CT) colonography during the measurement period or the four years prior to the measurement period
- Fecal immunochemical DNA test (FIT-DNA) during the measurement period or the two years prior to the measurement period

**Numerator Quality-Data Coding Options:**

**Patient receiving Hospice Services, Patient Not Eligible**

**Denominator Exclusion: G9710:**

Patient was provided hospice services any time during the measurement period

**OR**

**Colorectal Cancer Screening Not Performed for Medical Reasons**

**Denominator Exclusion: G9711:**

Patients with a diagnosis or past history of total colectomy or colorectal cancer

**OR**

**Colorectal Cancer Screening Performed**

**Performance Met: CPT II 3017F:**

Colorectal cancer screening results documented and reviewed

**OR**

**Colorectal Cancer Screening not Performed, Reason not Otherwise Specified**

Append a reporting modifier (8P) to CPT Category II code 3017F to report circumstances when the action described in the numerator is not performed and the reason is not otherwise specified.

**Performance Not Met: 3017F with 8P:**

Colorectal cancer screening results were not documented and reviewed, reason not otherwise specified

**RATIONALE:**

An estimated 132,700 men and women were diagnosed with colon cancer or rectal cancer in 2015. In the same year, 49,700 were estimated to have died from the disease, making colorectal cancer the third leading cause of cancer death in the United States (National Cancer Institute 2015, American Cancer Society 2015).

Screening for colorectal cancer is extremely important as there are no signs or symptoms of the cancer in the early stages. If the disease is caught in its earliest stages, it has a five-year survival rate of 90%; however, the disease is often not caught this early. While screening is extremely effective in detecting colorectal cancer, it remains underutilized (American Cancer Society 2015).

The U.S. Preventive Service Task Force has identified fecal occult blood tests, colonoscopy, flexible sigmoidoscopy computed tomography colonography, and fecal immunochemical DNA tests as effective screening methods (United States Preventive Services Task Force 2016).

**CLINICAL RECOMMENDATION STATEMENTS:**

The United States Preventive Services Task Force (2016):

- 1) The USPSTF recommends screening for colorectal cancer in adults, beginning at age 50 years and continuing until age 75 years (A recommendation).
- 2) The USPSTF recommends screening for colorectal cancer using fecal occult blood testing, sigmoidoscopy, colonoscopy computed tomography colonography, and fecal immunochemical DNA tests.

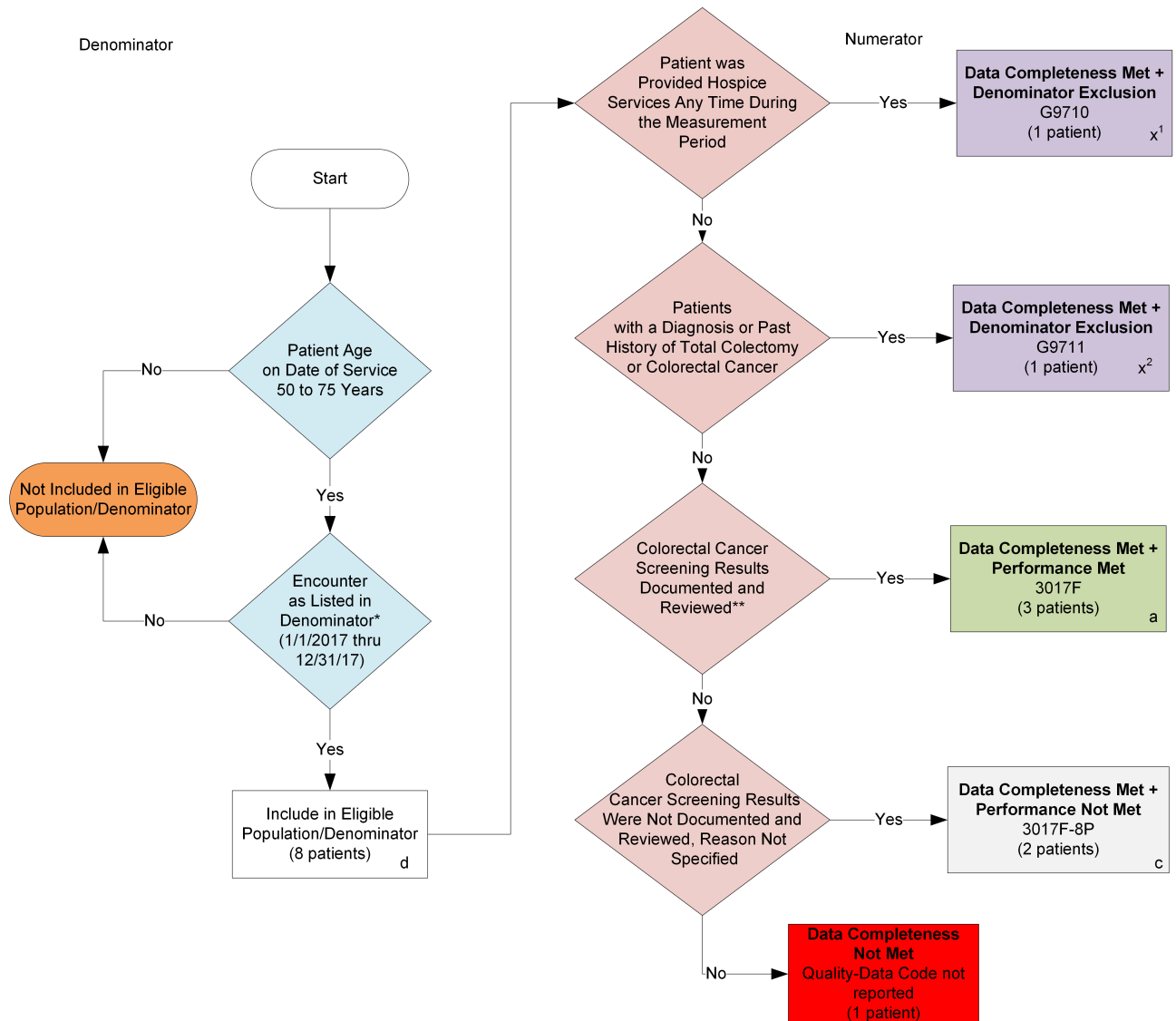
**COPYRIGHT:**

These performance measures were developed and are owned by the National Committee for Quality Assurance ("NCQA"). These performance measures are not clinical guidelines and do not establish a standard of medical care. NCQA makes no representations, warranties, or endorsement about the quality of any organization or physician that uses or reports performance measures and NCQA has no liability to anyone who relies on such measures. NCQA holds a copyright in this measure and can rescind or alter this measure at any time. Users of the measure shall not have the right to alter, enhance, or otherwise modify the measure and shall not disassemble, recompile, or reverse engineer the source code or object code relating to the measure. Anyone desiring to use or reproduce the measure without modification for a noncommercial purpose may do so without obtaining any approval from NCQA. All commercial uses must be approved by NCQA and are subject to a license at the discretion of NCQA. Use by health care providers in connection with their own practices is not commercial use. A "commercial use" refers to any sale, license, or distribution of a measure for commercial gain, or incorporation of a measure into any product or service that is sold, licensed, or distributed for commercial gain, even if there is no actual charge for inclusion of the measure. ©2004-2016 National Committee for Quality Assurance, all rights reserved.

Performance measures developed by NCQA for CMS may look different from the measures solely created and owned by NCQA.

CPT® contained in the Measures specifications is copyright 2004-2016 American Medical Association.

## 2017 Claims Individual Measure Flow #113 NQF #0034: Colorectal Cancer Screening



### SAMPLE CALCULATIONS:

#### Data Completeness=

$$\frac{\text{Denominator Exclusion } (x^1+x^2= 2 \text{ patients}) + \text{Performance Met } (a=3 \text{ patients}) + \text{Performance Not Met } (c=2 \text{ patients})}{\text{Eligible Population / Denominator } (d=8 \text{ patients})} = \frac{7 \text{ patients}}{8 \text{ patients}} = 87.50\%$$

#### Performance Rate=

$$\frac{\text{Performance Met } (a=3 \text{ patients})}{\text{Data Completeness Numerator } (7 \text{ patients}) - \text{Denominator Exclusion } (x^1+x^2=2 \text{ patients})} = \frac{3 \text{ patients}}{5 \text{ patients}} = 60.00\%$$

\* See the posted Measure Specification for specific coding and instructions to report this measure.

\*\* Patients are considered to have appropriate screening for colorectal cancer if any of the following are documented:

- Fecal occult blood test (FOBT) during the measurement period
- Flexible sigmoidoscopy during the measurement period or the four years prior to the performance period
- Colonoscopy during the measurement period or the nine years prior to the measurement period
- Computed tomography (CT) colonography during the measurement period or the four years prior to the measurement period
- Fecal immunochemical DNA test (FIT-DNA) during the measurement period or the two years prior to the measurement period

NOTE: Reporting Frequency: Patient-process

CPT only copyright 2016 American Medical Association. All rights reserved. The measure diagrams were developed by CMS as a supplemental resource to be used in conjunction with the measure specifications. They should not be used alone or as a substitution for the measure specification.

v1

**2017 Claims Individual Measure Flow**  
**#113 NQF #0034: Colorectal Cancer Screening**

Please refer to the specific section of the Measure Specification to identify the denominator and numerator information for use in reporting this Individual Measure.

1. Start with Denominator
2. Check Patient Age:
  - a. If the Age is 50 to 75 years of age on the Date of Service and equals No during the measurement period, do not include in Eligible Patient Population. Stop Processing.
  - b. If the Age is 50 to 75 years of age on the Date of Service and equals Yes during the measurement period, proceed to Check Encounter Performed.
3. Check Encounter Performed:
  - a. If Encounter as Listed in the Denominator equals No, do not include in Eligible Patient Population. Stop Processing.
  - b. If Encounter as Listed in the Denominator equals Yes, include in the Eligible population.
4. Denominator Population:
  - a. Denominator population is all Eligible Patients in the denominator. Denominator is represented as Denominator in the Sample Calculation listed at the end of this document. Letter d equals 8 patients in the sample calculation.
5. Start Numerator
6. Check Patient Was Provided Hospice Services Any Time During the Measurement Period:
  - a. If Patient Was Provided Hospice Services Any Time During the Measurement Period equals Yes, include in Data Completeness Met and Denominator Exclusion.
  - b. Data Completeness Met and Denominator Exclusion letter is represented as Data Completeness and Performance Rate in the Sample Calculation listed at the end of this document. Letter x1 equals 1 patient in Sample Calculation.

If Patient Was Provided Hospice Services Any Time During the Measurement Period equals No, proceed to Patients with a Diagnosis or Past History of Total Colectomy or Colorectal Cancer.
7. Check Patients with a Diagnosis or Past History of Total Colectomy or Colorectal Cancer:
  - a. If Patients with a Diagnosis or Past History of Total Colectomy or Colorectal Cancer equals Yes, include in Data Completeness Met and Denominator Exclusion.
  - b. Data Completeness Met and Denominator Exclusion letter is represented as Data Completeness and Performance Rate in the Sample Calculation listed at the end of this document. Letter x2 equals 1 patient in Sample Calculation.
  - c. If Patients with a Diagnosis or Past History of Total Colectomy or Colorectal Cancer equals No, proceed to Colorectal Cancer Screening Results Documented and Reviewed.
8. Check Colorectal Cancer Screening Results Documented and Reviewed:

- a. If Colorectal Cancer Screening Results Documented and Reviewed equals Yes, include in Data Completeness Met and Performance Met.
  - b. Data Completeness Met and Performance Met letter is represented in the Data Completeness and Performance Rate in the Sample Calculation listed at the end of this document. Letter a equals 3 patients in Sample Calculation.
  - c. If Colorectal Cancer Screening Results Documented and Reviewed equals No, proceed to Colorectal Cancer Screening Results Not Documented and Reviewed, Reason Not Specified.
9. Check Colorectal Cancer Screening Results Not Documented and Reviewed, Reason Not Specified:
- a. If Colorectal Cancer Screening Results Not Documented and Reviewed, Reason Not Specified equals Yes, include in the Data Completeness Met and Performance Not Met.
  - b. Data Completeness Met and Performance Not Met letter is represented in the Data Completeness in the Sample Calculation listed at the end of this document. Letter c equals 2 patients in the Sample Calculation.
  - c. If Colorectal Cancer Screening Results Not Documented and Reviewed, Reason Not Specified equals No, proceed to Data Completeness Not Met.
10. Check Data Completeness Not Met:
- a. If Data Completeness Not Met equals No, Quality Data Code not reported. 1 patient has been subtracted from the Data Completeness numerator in the sample calculation.

**SAMPLE CALCULATIONS:**

**Data Completeness=**

$$\frac{\text{Denominator Exclusion } (x^1+x^2= 2 \text{ patients}) + \text{Performance Met } (a=3 \text{ patients}) + \text{Performance Not Met } (c=2 \text{ patients})}{\text{Eligible Population / Denominator } (d=8 \text{ patients})} = \frac{7 \text{ patients}}{8 \text{ patients}} = 87.50\%$$

**Performance Rate=**

$$\frac{\text{Performance Met } (a=3 \text{ patients})}{\text{Data Completeness Numerator } (7 \text{ patients}) - \text{Denominator Exclusion } (x^1+x^2=2 \text{ patients})} = \frac{3 \text{ patients}}{5 \text{ patients}} = 60.00\%$$